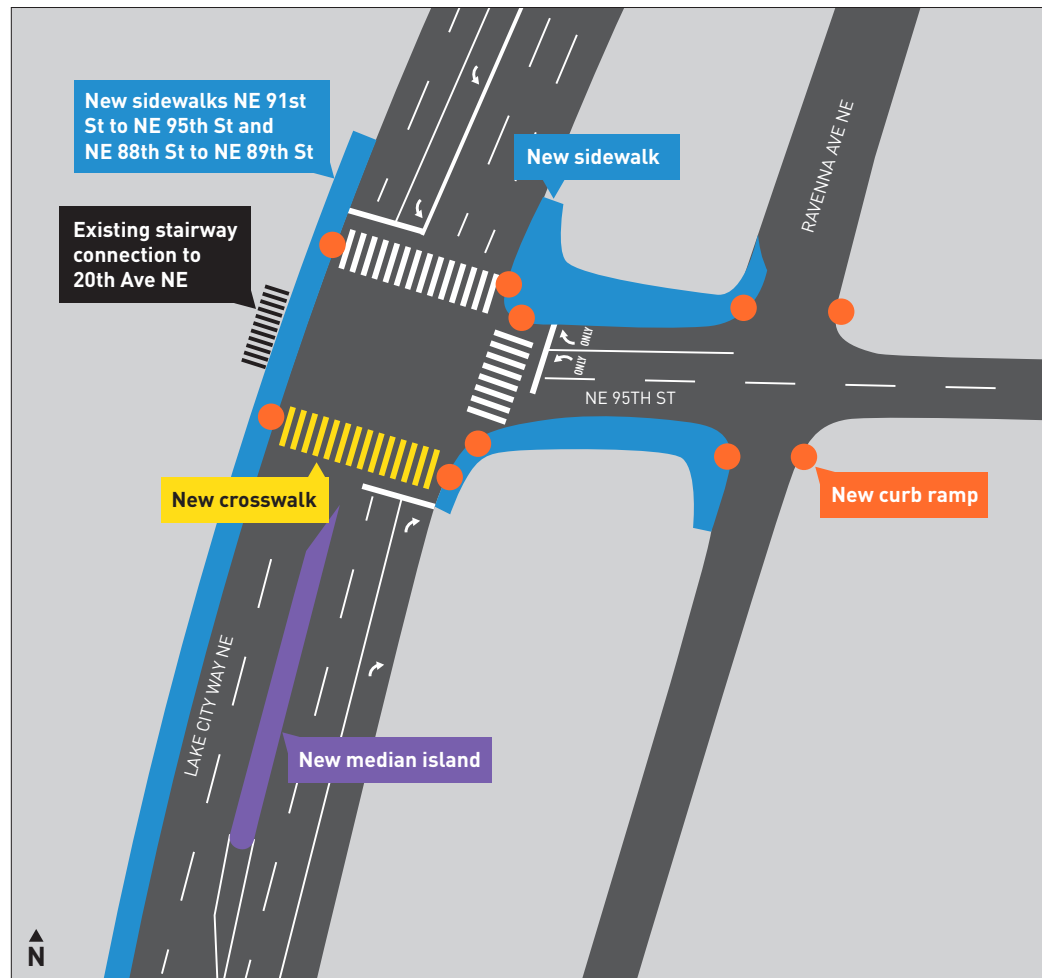
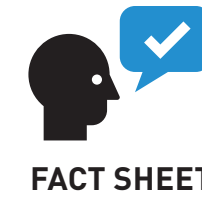
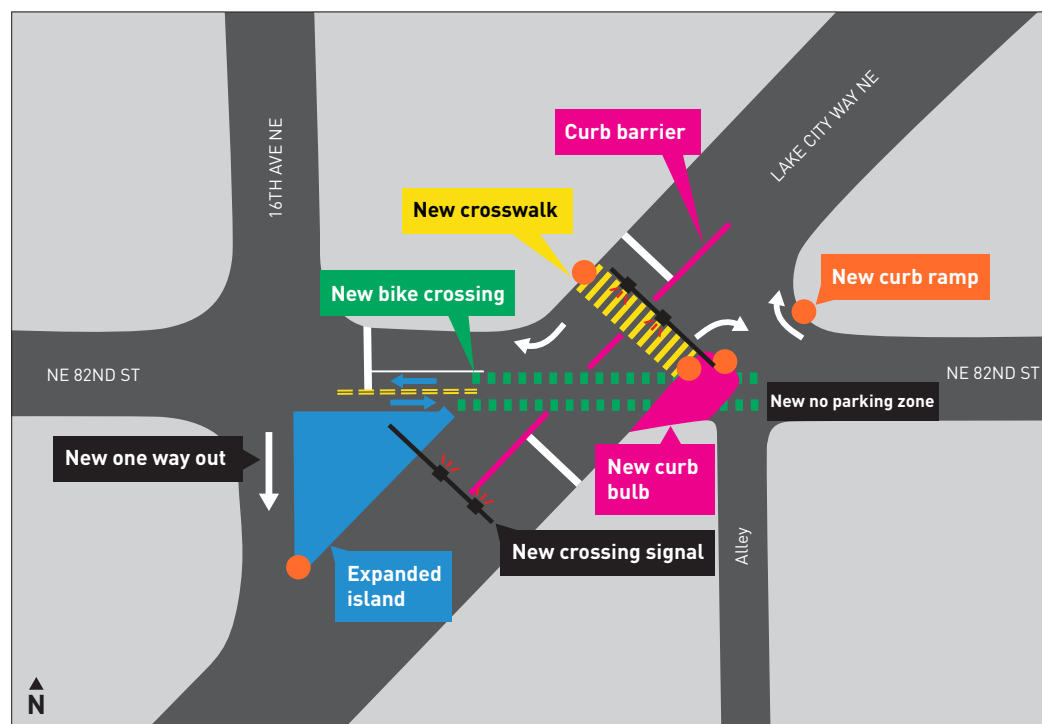


### 3 Lake City Way NE & NE 95th St



### 4 Lake City Way NE & NE 82nd St



# LAKE CITY WAY CORRIDOR IMPROVEMENT PROJECT

July 2020

## PROJECT OVERVIEW

Lake City Way NE (State Route 522) is one of the busiest arterial routes in Northeast Seattle. The 3.67-mile-long corridor (from I-5 to the city limits at NE 145th St) has seen a high volume of collisions over the years. The roadway facilitates travel to and from the city, supports thriving businesses, hosts frequent transit routes, and functions as “Main Street” for residents in this part of the city.

We’re working closely with the Washington State Department of Transportation (WSDOT) to enhance safety, accessibility, and travel on Lake City Way NE. WSDOT plans to repave the corridor and upgrade ADA curb ramps, and we will construct spot and intersection improvements to enhance walkability and safety for all travelers.

## OUTREACH AND DESIGN

In 2013 we launched a collaborative process with residents, community groups, Seattle Police, State Patrol, Liquor Control Board, Public Health, WSDOT, and the Washington State Transportation Commission (WSTC), to review street conditions on Lake City Way NE. The collaboration was known as the Lake City Way Traffic Safety Project. As part of this work, we hosted public events, went door-to-door to local businesses, spoke with neighbors, gathered community input, and discussed strategies to improve safety and mobility along the corridor.

We’re using this feedback in addition to collision and speed data to inform and design our project. We’ve also been reaching out to residents and businesses since last year, including two public meetings last September in the early design phase.

The project design has been completed and construction is expected to begin with the WSDOT led repaving as early as spring 2020.

See reverse for more information on design

## COLLABORATION AND FUNDING

This project is a joint effort between WSDOT and SDOT.

**WSDOT funding** is provided by Washington State and federal funds.

**SDOT funding** for spot and intersection improvements is provided by the 9-year Levy to Move Seattle, approved by voters in 2015.



A routinely busy crossing: NE 125th St & Lake City Way NE

## STAY INFORMED

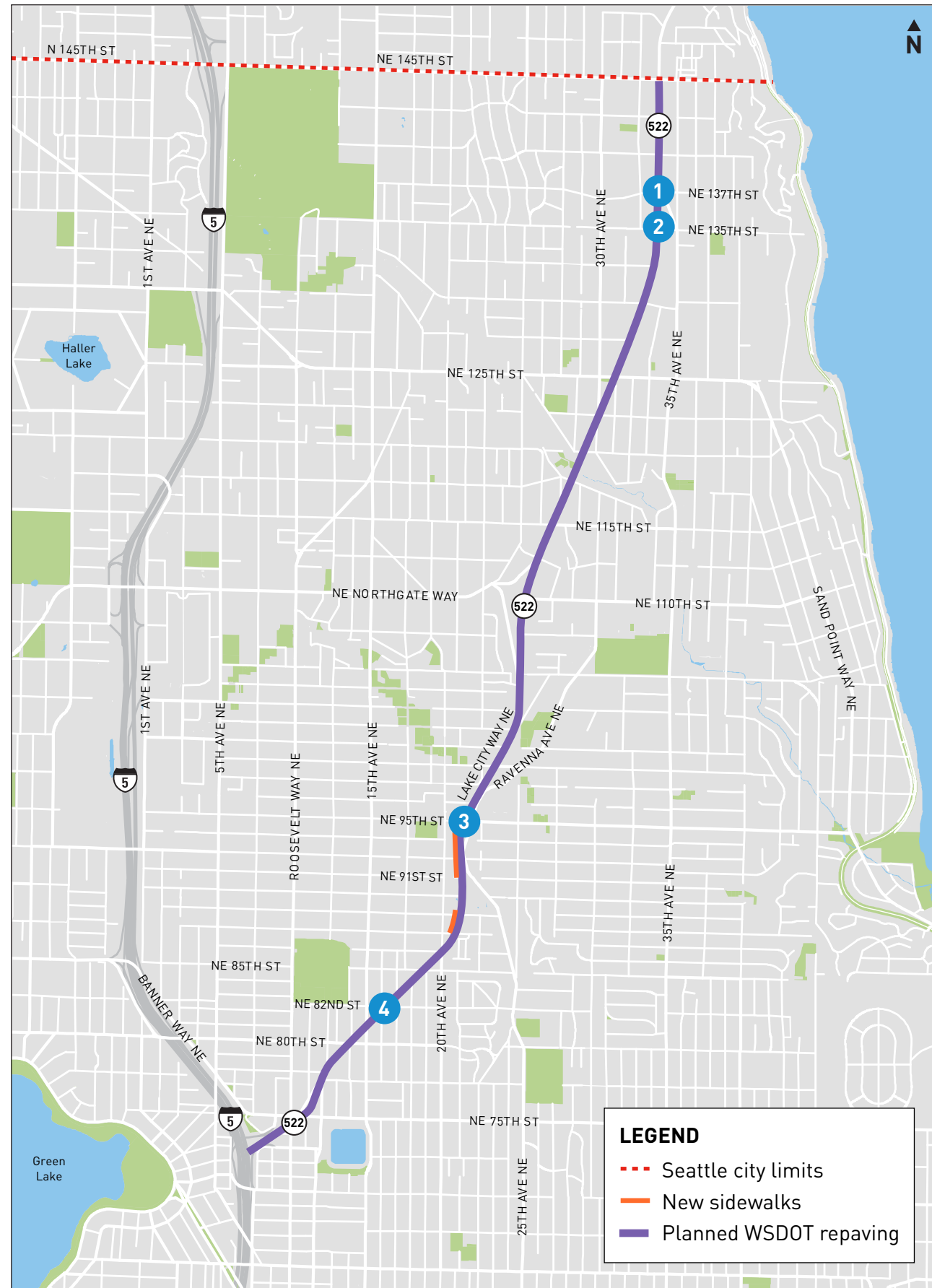
To get the latest information, sign up for email updates on our webpage or reach out using the contact information below.

LCWimprovements@seattle.gov  
206-256-5458  
www.seattle.gov/transportation/LCWimprovements

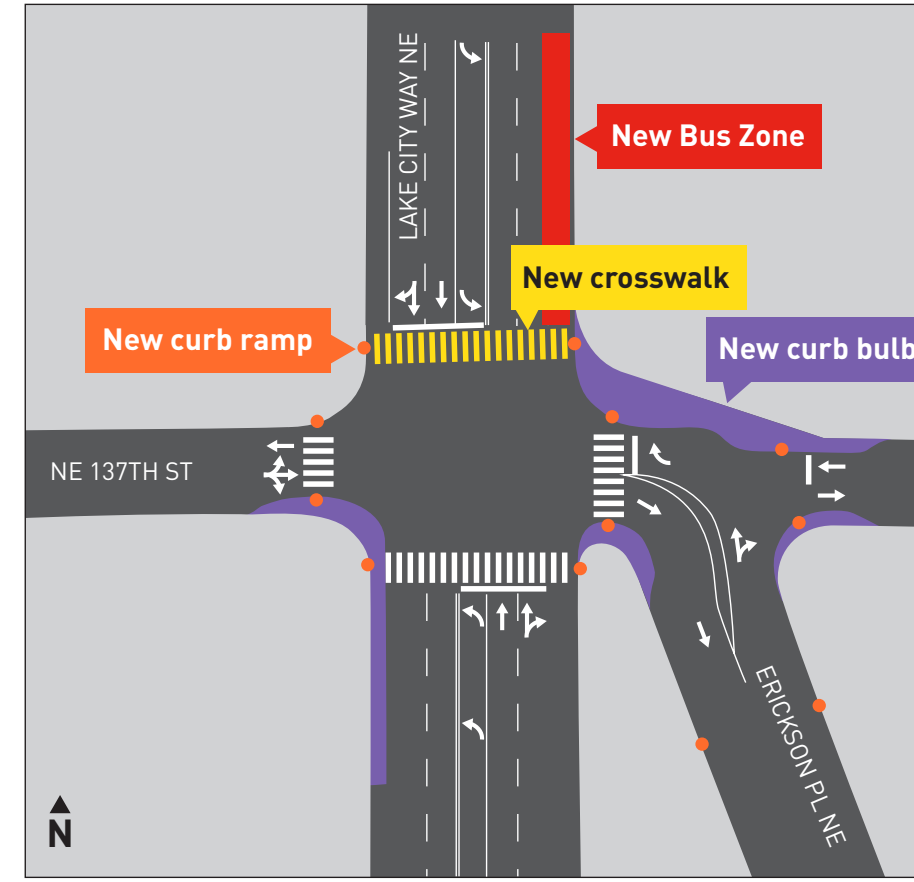


# LAKE CITY WAY CORRIDOR IMPROVEMENT PROJECT

## Project Overview Map and Proposed Improvements



### 1 Lake City Way NE & NE 137th St



### 2 Lake City Way NE & NE 135th St

