



## CHIEF SEALTH HIGH SCHOOL WALKWAY IMPROVEMENTS

### Construction starting as soon as June 11

As soon as Monday, June 11\*, we'll start construction on improvements for people walking along 26th Ave SW and 25th Ave SW between SW Cloverdale and SW Trenton streets. Work will last approximately 6 weeks. During this work, crews will:

- Install two 10-foot-wide walkways on 26th Ave SW and 25th Ave SW that will connect SW Trenton St and the cul-de-sacs to the north
- Install lighting along the two paths
- Replace vegetation along the two paths, where appropriate
- Add a concrete curb bulb extension and ADA curb ramps at 26th Ave SW

The 26th Ave SW walkway will be constructed with asphalt. The 25th Ave SW walkway will be constructed with compacted gravel. SDOT crews will install asphalt on the 25th Ave SW walkway at a later date.

#### WHAT TO EXPECT DURING CONSTRUCTION

- Work will last approximately 6 weeks
- Typical construction hours on weekdays, 7 AM–5 PM
- Temporary lane, crosswalk, and sidewalk closures
- Detoured walking and biking routes. One of the two walkways will remain open while the other is under construction.
- Pedestrian access to Westwood Village will be maintained during construction
- Possible parking and loading restrictions
- Noise, dust, truck activity, and vibration

*\*Construction schedule is subject to change*

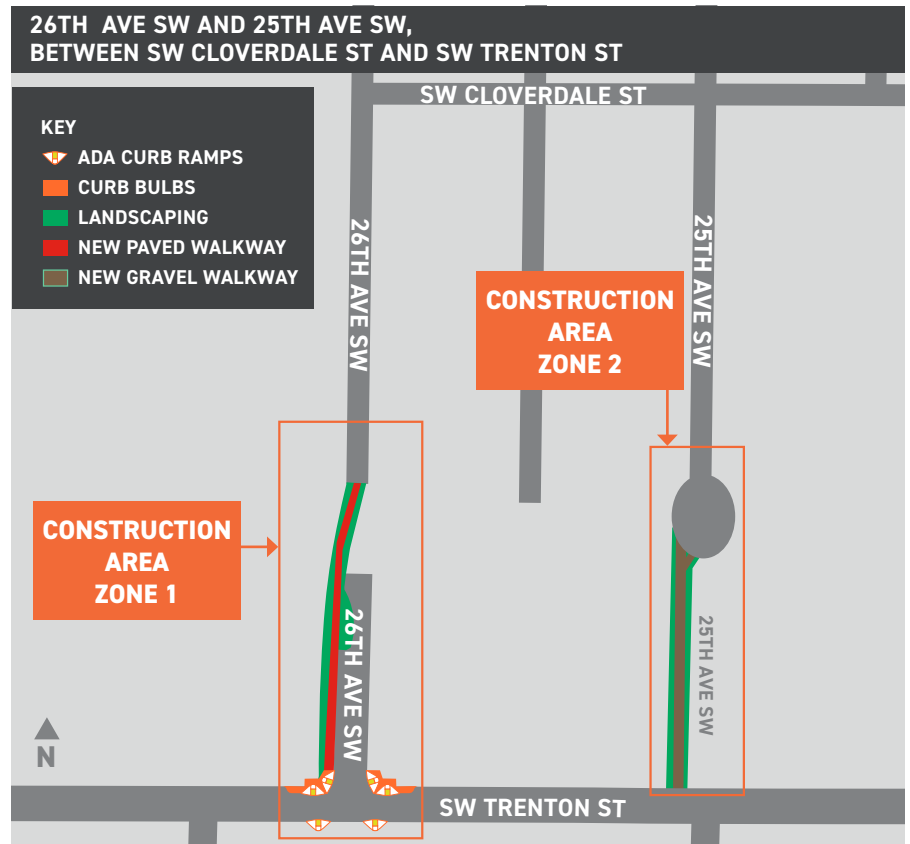
#### PROJECT BACKGROUND

In 2018, The Chief Sealth High School Walkway Improvements project was one of 12 selected by the Levy to Move Seattle Oversight Committee to be funded through SDOT's Neighborhood Street Fund (NSF) program. The NSF program funds projects requested by the community.

#### DO YOU NEED THIS IN ANOTHER FORMAT?

We're building a transportation project proposed by your neighbors to make it safer for people walking and biking and to strengthen community. To learn more about the project or request translations, call (206) 733-9361.

Estamos construyendo un proyecto de transporte propuesto por nuestros vecinos a fin de que sea mas seguro para que las personas caminen y monten bicicleta y asimismo fortalecer a la comunidad. Para obtener mayor informacion acerca del proyecto o para solicitar transporte llamar a: (206) 733-9361.



#### PROJECT INFORMATION AND CONTACT

[www.seattle.gov/transportation/NSFChiefSealthWalkway.htm](http://www.seattle.gov/transportation/NSFChiefSealthWalkway.htm)  
NSFChiefSealthWalkway@seattle.gov | (206) 733-9361