



**imagine**  
GREATER  
DOWNTOWN

Big Ideas for the Heart of Seattle



# Seattle Freight Advisory Board

March 19, 2019

# GREATER DOWNTOWN

Greater Downtown is made up of ten of the fastest growing neighborhoods in the city of Seattle:

- Uptown
- South Lake Union
- Capitol Hill
- Pike/Pine
- First Hill
- Denny Triangle
- Belltown
- Commercial Core
- Chinatown International District
- Pioneer Square



# PARTNERSHIP AND PURPOSE



In coordination with the Washington State Department of Transportation and the Port of Seattle

*Working together to create a shared mobility and urban design vision for the heart of Seattle that anticipates future needs in the face of significant growth and change*



# OUTREACH AND ENGAGEMENT

Community conversations and focus groups

Interactive mapping and online comments

On street surveys in Seattle Center, Westlake, Chinatown-International District, Capitol Hill, SODO, Pioneer Square

34 member community Advisory Group

*¡Aquí tenemos algunas de nuestras Grandes Ideas!*

Visite [www.imaginegreaterdowntown.org](http://www.imaginegreaterdowntown.org) para:

- Mire el video para más información
- Infórmese acerca de las Grandes Ideas formadas por la comunidad y comparta sus pensamientos



# DRAFT BIG IDEAS AND KEY ELEMENTS

 <p><b>CONNECT US TO THE WATER</b></p>	 <p><b>STITCH THE I-5 DIVIDE</b></p>	 <p><b>GREENING GREATER DOWNTOWN</b></p>	 <p><b>GREAT PLACES FOR COMMUNITY LIFE</b></p>	 <p><b>STREETS WE LOVE, STREETS THAT WORK</b></p>	 <p><b>EXCELLENT TRANSIT EXPERIENCE</b></p>	 <p><b>MAJOR HUBS, GREAT PLACES</b></p>
<p>Inspiring and interactive experiences on the lake, sound and in public spaces</p>	<p>Reconnect neighborhoods and improve access over, under, and across I-5</p>	<p>Infuse more parks and nature in the urban landscape</p>	<p>Distinct neighborhoods with inviting places and destinations</p>	<p>Safe, sustainable, and well-organized streets for every form of travel</p>	<p>People prefer transit to access and travel within Greater Downtown</p>	<p>Celebrate culture and arrival, create seamless mobility connections, and reinforce the gateway portals to Greater Downtown</p>
<p>Connect People to the Lake and Sound</p>	<p>Open Spaces Over I-5</p>	<p>Connect People with Nature</p>	<p>A Community Heart in Every Neighborhood</p>	<p>People-First Streets</p>	<p>Foundation: Frequent, Reliable Transit</p>	<p>Integrated Network of Hubs</p>
<p>Accessing and Experiencing Water</p>	<p>Bring Light and Purpose to the Spaces Under I-5</p>	<p>Restore Our Natural Habitat</p>	<p>Place Specific Features in Every Public Space</p>	<p>Safe and Sustainable Streets</p>	<p>Fundamentals: People Centered Transit</p>	<p>Jackson Hub Gateway</p>
	<p>Streets and Places for People Across I-5</p>		<p>Places To Enjoy and Gather</p>	<p>Making New Mobility Work for Us</p>	<p>Finishes: Exceptional Transit Environments</p>	<p>Westlake Crossroads</p>

# IMPROVING GOODS DELIVERY: EFFICIENCIES THAT SUPPORT CLIMATE GOALS

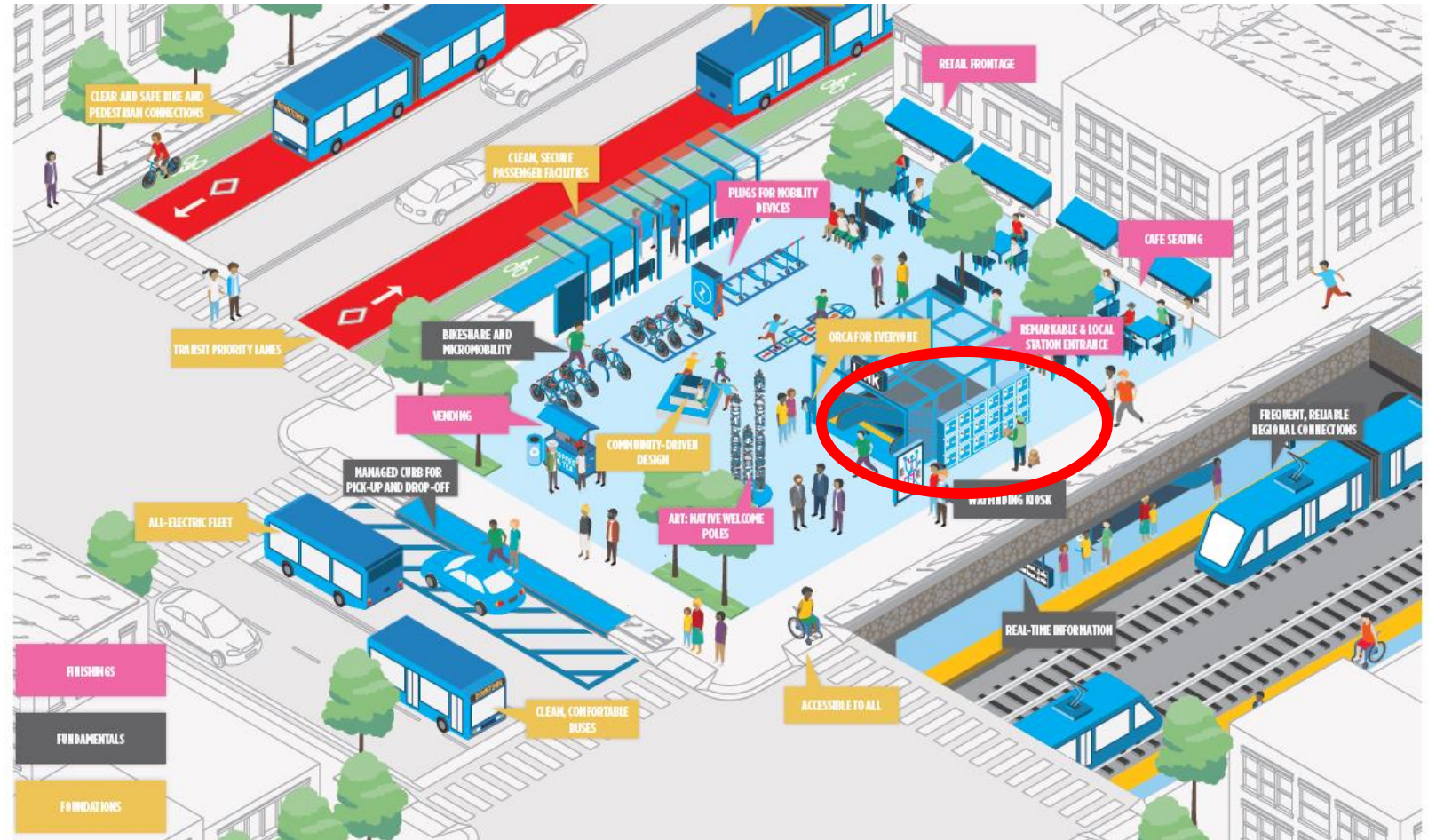




# IMPROVING GOODS DELIVERY: SHARED LOCATIONS FOR CONSUMERS



Company locker delivery systems



Shared delivery areas

# QUESTIONS

- What else is going on that we should be aware of for the future of goods delivery?
- Are there future planning projects or ongoing studies – like the UW urban freight lab that we should be aware of?



# TIMELINE

- January - March 2019
  - Prioritize big ideas and key moves
  - Collect public feedback on priorities
  - Public open house February 28
- March - June 2019
  - Executive Review
  - Document development
  - Finalize plan



**Open house**

Thursday, February 28, 2019  
6:30 - 8:00 PM  
Seattle City Hall,  
Bertha Knight Landes Room  
600 4th Ave

CONNECT  
[info@imaginegreaterdowntown.org](mailto:info@imaginegreaterdowntown.org)  
[imaginegreaterdowntown.org](http://imaginegreaterdowntown.org)

We are seeking your thoughts on how to create great streets, lively public places, and better ways to get there.

- Free and open to all
- Interpretation in Spanish, Mandarin, Cantonese, Tagalog, Vietnamese, and Russian
- Kids are welcome!
- Hosted by the project team and the community advisory group

Imagine Greater Downtown is a partnership between



City of Seattle



King County



SOUNDTRANSIT



Downtown Seattle Association

And in collaboration with the Port of Seattle and WSDOT





What can you imagine for the heart of Seattle?  
[www.imaginegreaterdowntown.org](http://www.imaginegreaterdowntown.org)

[Chris.Saleeba@Seattle.gov](mailto:Chris.Saleeba@Seattle.gov)  
[Jonathan.Lewis@Seattle.gov](mailto:Jonathan.Lewis@Seattle.gov)

Imagine Greater Downtown is a partnership between



City of Seattle



King County



SOUNDTRANSIT



Downtown  
Seattle  
Association