

Freight Master Plan

2018-2022 Implementation Plan and Progress Report

9/18/2018

Seattle Department of Transportation



City of Seattle

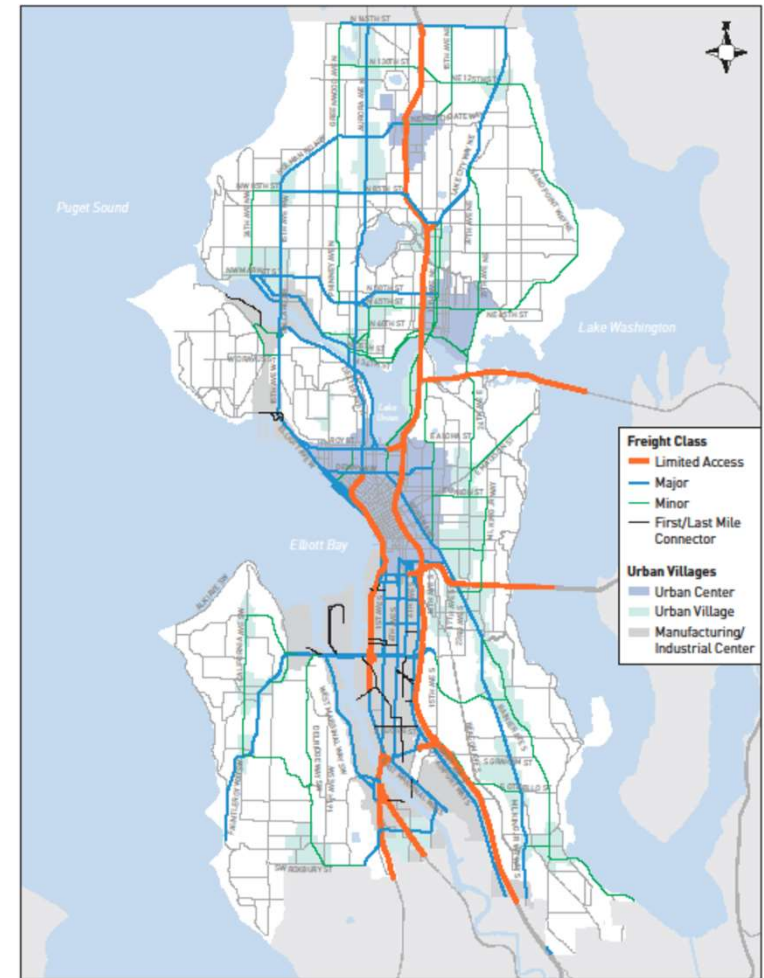
Presentation Overview

- Project Selection
- FMP Work Plan
- Implementation Plan Update
- FMP Strategies
- Partnerships
- Additional Activity



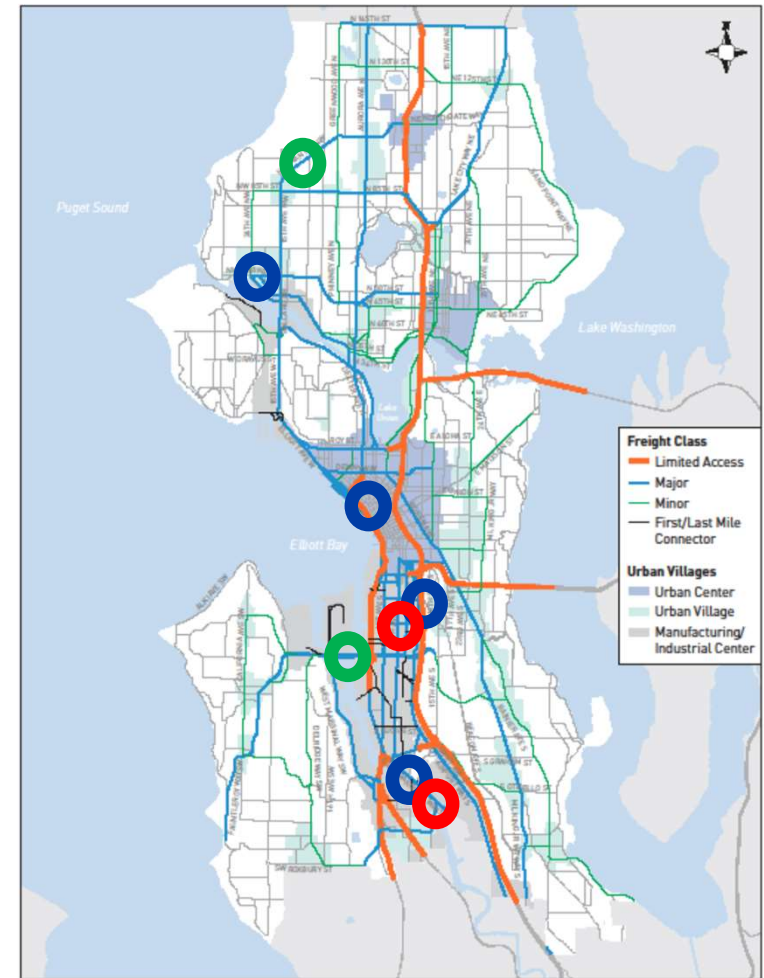
Opportunity-Driven Project Selection

- 16 projects or studies identified for 5-year Implementation Plan
- Large projects require external funding – usually grant-based
- Partnering within and outside SDOT helps leverage our funds



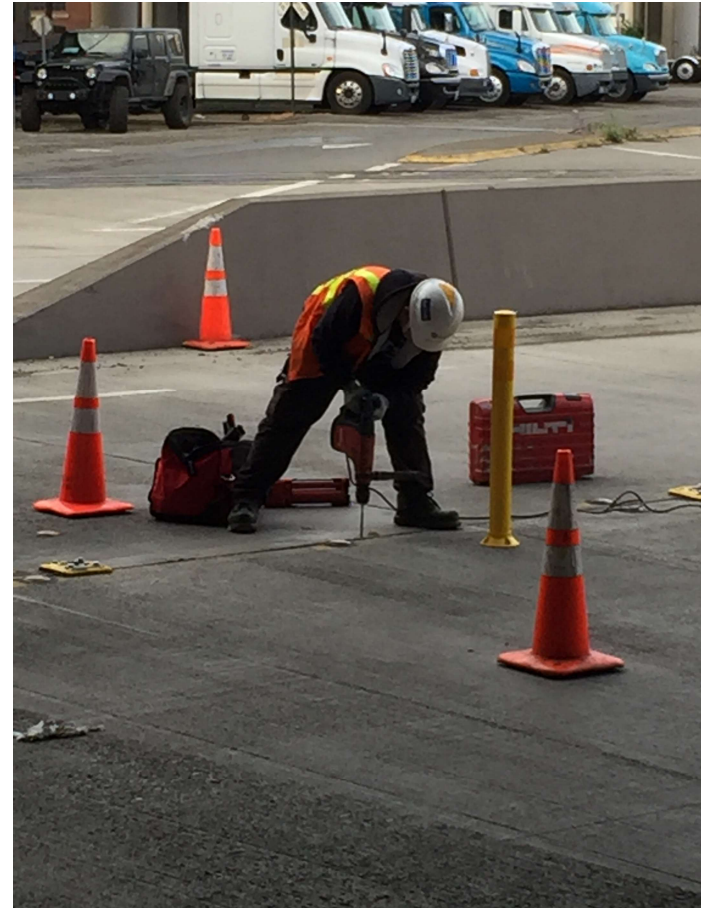
Plan Update

- • Small: \$0-\$100K (2 of 5)
 - Holman Rd project rescinded to maintain pedestrian access
- • Medium: \$100-\$500K (4 of 8)
 - Clay St ADA ramps Q3 Install
- • Large: \$500k+ (2 of 3)
 - Rail detection pilot study ongoing



2017 Ongoing and Levee Projects

- **S Michigan St AAC and ITS (Project COMPLETE)**
Maintenance and intersection updates
- **E. Marginal Way Redevelopment Project**
30% design – \$8.1M in grants awarded
- **S Lander St Grade Separation**
June 2018 groundbreaking
2020 expected completion



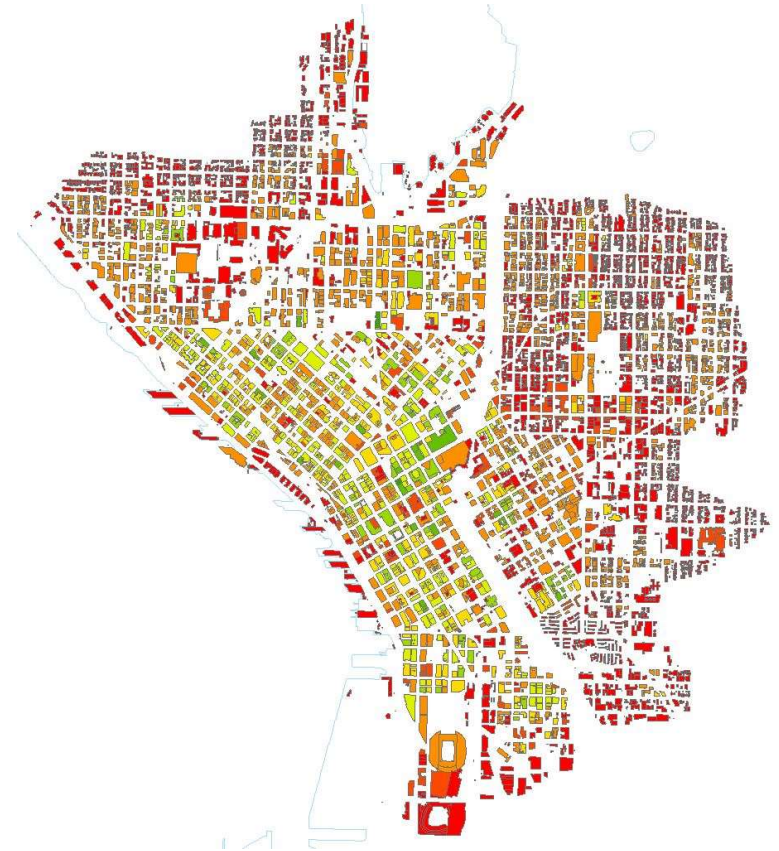
FMP Strategies

- **Safety**
 - Install truck side guards on city fleets - COMPLETE
- **Economy**
 - Develop an urban goods delivery strategy – Urban Freight Lab
- **Mobility**
 - Expand the city's freight data collection program – Ongoing
- **State of Good Repair**
 - Address major maintenance and freight network needs
- **Equity**
 - Work with communities impacted by goods movement
- **Environment**
 - Reduce greenhouse gas emissions produced by freight



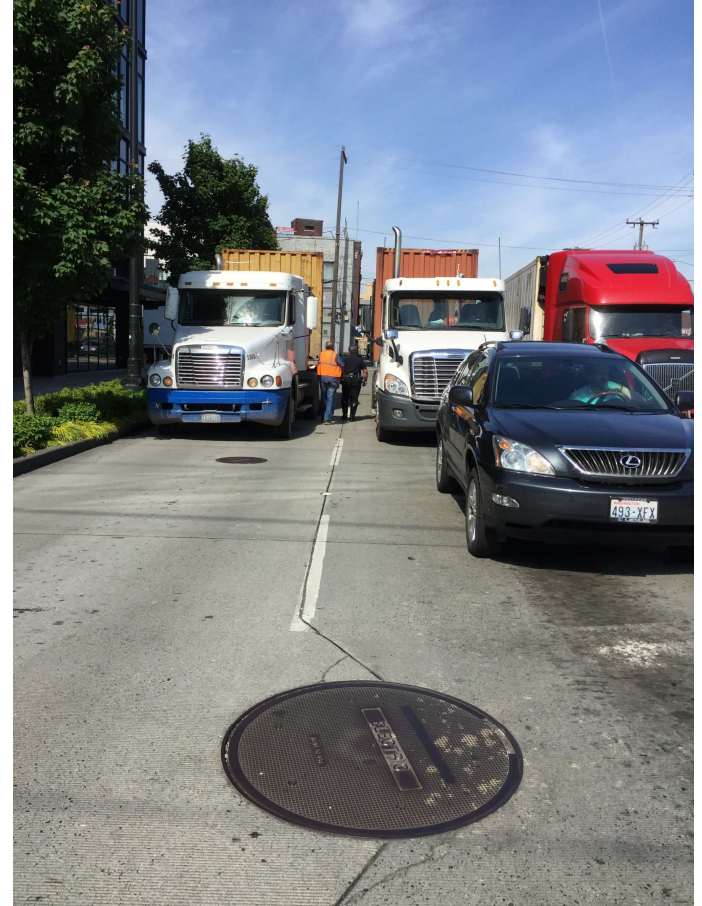
UW Urban Freight Lab

- Private/Public/Academic Collaboration
- Final 50 Feet
- Common carrier locker pilot
- Alley Congestion SLI
- International Recognition



Safe and Swift Agreement

- Advances mutual goals between Port and City
- Organizes multiple agreements
- Identifies 3 corridors
 - Spokane St
 - 15th Ave N
 - E Marginal Way



Additional Activity

- Freight Advisory Board
- New Mobility Implementation Plans
- Industrial Lands Advisory Panel Efforts
- Design Initiatives – Alley SLI
- PSRC Initiatives and Long Rang Plan
- C40 Carbon reduction initiatives
- Vehicle counts and research
- Grant applications



Questions?

Freight Program

Christopher.eaves@seattle.gov / 206-684-4524

Matt.Beaulieu@seattle.gov / 206-615-1911

www.seattle.gov/transportation



Small projects - \$0-\$100k: 2018 Activity

- **S Spokane St. Freight-Only Lanes Pilot Project**
\$1M Grant application which includes ITS, signage, and striping
- **Holman Rd. NW/13th Ave W Intersection Improvements**
Project Rescinded- Bridge to remain for pedestrian crossing alternatives



Medium projects - \$100-\$500k: 2018 Activity

- **Clay Street ADA Curb Ramps**
Project Installation Q3 2018
- **East Marginal Way S/8th Ave. S/S Myrtle Intersection Improvements**
Project identified as a priority in Georgetown Mobility Study
- **4th Ave. S Reconstruction & ITS Implementation**
AAC and Striping, complete ITS not included in maintenance
- **Operations review of Ballard Manufacturing and Industrial Center freight-oriented needs**
Proposed consultant identification Q4



Large projects - \$500+: 2018 Activity

- **16th Ave. S & E. Marginal Way S Intersection Improvements**
Alternative designs proposed by engineering students at UW and SPU
- **Railroad Crossing Delay Warning System at S Holgate, S Lander St & S Horton St**
Detection Technology Pilot Study - Ongoing



