



Northgate Pedestrian Bridge---CM services

Project Manager	Mark Sliger
Email	mark.sliger@seattle.gov
Phone	(206) 733-9936
Website	N/A

High Level Scope	Provide preconstruction design support leading up to the advertisement and award of the construction contract. Provide on-site resident engineer(RE), multiple inspectors, and office engineer/document control services for this \$23M bridge project. This team will work out of a field office and the estimated duration of the construction contract is approximately 21 months. The bridge to be built will span I-5 and will require coordination with WSDOT, Sound Transit, and other agencies.
Contracting Opportunities	<ul style="list-style-type: none">• <u>Scope Summary</u><ul style="list-style-type: none">○ Preconstruction design support (90% constructability review, bid review, etc.)○ 5 FTE's during construction: This team will provide full oversight of all contractor work. The estimated duration for the construction is April 2019 thru December 2020. We're estimating 6 months of closeout activities starting in January 2021 and concluding in June 2021.• <u>Funding Notes:</u> FHWA/FTA
Scope Details	This contracting opportunity is anticipated to be released as stand-alone, full solicitation. The solicitation will be posted through the City of Seattle E-Bid Exchange portal.
Contract Estimate	Approximately \$ 3.3M
Schedule Summary	SDOT intends to advertise this RFQ in March/April 2018
<p>The consultant contract opportunity will be announced on http://consultants.seattle.gov/. The Formal Solicitations are bid through the City of Seattle E-Bid Exchange system. This information is neither a guarantee of contracting opportunities, nor a promise of business and is subject to change. If you have any questions on the prospective projects, please contact the staff person identified for the project.</p>	





Fairview Bridge---CM services (RE, inspectors, document control)

Project Manager	Mark Sliger
Email	Mark.Sliger@seattle.gov
Phone	(206) 733-9936
Website	N/A

High Level Scope	Provide on-site RE, inspectors, and document control team to manage the construction of this bridge project. EE = \$22M ±; duration = 14mo ± ; FHWA funded
Contracting Opportunities	<p>Fairview Bridge</p> <ul style="list-style-type: none">• <u>Scope Summary</u><ul style="list-style-type: none">○ 5-6 FTE's ± : one fulltime RE, multiple inspectors and one or two document control people. This team will manage the day to day oversight of all contractor work and will report directly to the City's Construction Engineering Supv.(CE); Tentative NTP for construction is March 2018 and completion in May 2019; (est duration = 14 mo ±)• <u>Funding Notes:</u><ul style="list-style-type: none">○ FHWA funds
Scope Details	This solicitation will be posted through the City of Seattle E-Bid Exchange portal.
Contract Estimate(s)	contract size \$2.5M±

Schedule Summary	SDOT is planning to release this solicitation in Sept/Oct, 2017
<p>The consultant contract opportunity will be announced on http://consultants.seattle.gov/. The Formal Solicitations are bid through the City of Seattle E-Bid Exchange system. This information is neither a guarantee of contracting opportunities, nor a promise of business and is subject to change. If you have any questions on the prospective projects, please contact the staff person identified for the project.</p>	





Resident Engineer(RE)/Office Engineering(OE)

Project Manager	Mark Sliger
Email	Mark.Sliger@seattle.gov
Phone	(206) 733-9936
Website	N/A

High Level Scope	Provide on-site RE and inspectors to oversee the construction of multiple upcoming projects.
Contracting Opportunities (3)	<p>A. Center City, Street Car</p> <ul style="list-style-type: none"> <u>Scope Summary</u> <ul style="list-style-type: none"> 5 FTE's ± : one fulltime RE and multiple inspectors. This team will manage the day to day oversight of all contractor work and will report directly to the City's Construction Engineering Supv.(CE); Work will start in 3rd Qtr of 2018 and end in 4th Qtr 2019. (est duration = 15 mo ±) <u>Estimate:</u> <ul style="list-style-type: none"> \$2.5M <u>Funding Notes:</u> <ul style="list-style-type: none"> FTA funds <p>B. Madison BRT</p> <ul style="list-style-type: none"> <u>Scope Summary</u> <ul style="list-style-type: none"> 7-9 FTE's ±: one fulltime RE, two asst RE's, and multiple inspectors; estimated construction start in spring 2018 with completion in late 2019 (est duration = 18 mo ±) <u>Estimate:</u> <ul style="list-style-type: none"> \$6.0M <u>Funding Notes:</u> <ul style="list-style-type: none"> FTA Funds <p>C. Lander Bridge</p> <ul style="list-style-type: none"> <u>Scope Summary</u> <ul style="list-style-type: none"> 6 FTE's ± : one fulltime RE and multiple inspectors; estimated start in Jan 2018 and completion in mid 2019 (est duration =18 mo ±) <u>Estimate:</u> <ul style="list-style-type: none"> \$5.0M <u>Funding Notes:</u> <ul style="list-style-type: none"> FHWA Funds





Scope Details	Contracting Opportunities listed under A, B, & C are anticipated to be released as stand-alone, full solicitations. Each solicitation will be posted through the City of Seattle E-Bid Exchange portal.
Contract Estimate(s)	Various contract sizes (\$2.5M, \$6.0M, \$5.0M)
Schedule Summary	SDOT is looking to start release of these 3 separate solicitations in Sept/Oct, 2017
<p>The consultant contract opportunity will be announced on http://consultants.seattle.gov/. The Formal Solicitations are bid through the City of Seattle E-Bid Exchange system.</p> <p>This information is neither a guarantee of contracting opportunities, nor a promise of business and is subject to change. If you have any questions on the prospective projects, please contact the staff person identified for the project.</p>	





Resident Engineer(RE)/Office Engineering(OE)

Project Manager	Leslie Bloomer
Email	leslie.bloomer@seattle.gov
Phone	(206) 386-1547
Website	N/A

High Level Scope	The City of Seattle Dept. of Transportation is requesting proposals from qualified professionals to provide on-call right of way appraisal services. Solicitation for these services is in response to increasing appraisal service needs due to the passage of the Transportation Levy to Move Seattle in 2015.
Contracting Opportunities	Seeking six (6) qualified consultants/firms to provide on-call right of way appraisal services. There are three (3) Solicitations, one for locally funded projects, one for FHWA-funded projects, and one for FTA-funded projects. From each of the three solicitations, 2 contracts will be awarded.
Scope Details	<p>Provide right of way appraisal services on an On-Call basis. Services will be provided in a series of Work Authorizations. Each Work Authorization will consist of specific scopes of work, milestones, deliverables and budgets. Anticipated scope of work includes but is not limited to the following services:</p> <p>Consultant shall develop: project funding estimates, true cost estimates, appraisals, appraisal reviews, administrative offer summaries, cost to cure bids, and market analysis for property acquisitions, surpluses and sales.</p> <p>These services will be provided in compliance with Federal, State and local laws, including, but not limited to, the Uniform Act 42 U.S. Code Chapter 61, WSDOT Local Agency Guidelines, RCW 8.26 and any Seattle Municipal Code applicable to appraisals. Appraisal work will be required to be done in a manner that maintains eligibility for federal funding.</p>
Contract Estimate(s)	Work authorizations will be of various sizes, depending on project needs.

Schedule Summary	Individual appraisal work will be awarded on an on-call/as-needed basis, in support of current and future transportation projects. The period of this on-call contract is anticipated for 3 years.
<p>The consultant contract opportunity will be announced on http://consultants.seattle.gov/. The Formal Solicitations are bid through the City of Seattle E-Bid Exchange system.</p> <p>This information is neither a guarantee of contracting opportunities, nor a promise of business and is subject to change. If you have any questions on the prospective projects, please contact the staff person identified for the project.</p>	





DRAFT



SDOT UPCOMING CONSULTANT OPPORTUNITIES

Listing Updated Quarterly



Dept	Project Name	Estimate	Location	PM/Contact	Estimated Construction Start
Office of the Waterfront/Parks	Parks Central Waterfront Piers Rehabilitation - Pier 62/63 Rebuild (packaged with Seawall Pine-Virginia)	\$22M	Downtown	Kit Loo kit.loo@seattle.gov (206) 684-3669	2017
Office of the Waterfront/Parks	Parks Central Waterfront Piers Rehabilitation – Waterfront Park	\$39M	Downtown	Kit Loo kit.loo@seattle.gov (206) 684-3669	2020
Office of the Waterfront	Alaskan Way - Main Corridor (tentatively broken into two bid packages)	\$158M (estimate does not include utility work)	Downtown	Angela Brady angela.brady@seattle.gov (206) 684-3115	
	South Project (South of Union Street)	TBD		Angela Brady angela.brady@seattle.gov (206) 684-3115	2019
	North Project (North of Union Street)	TBD		Angela Brady angela.brady@seattle.gov (206) 684-3115	2019
Office of the Waterfront	Overlook Walk & E/W Connection – Overlook Walk (portions of construction bid packaging may be combined with other projects)	\$70M	Downtown	Steve Pearce steve.pearce@seattle.gov (206) 684-8371	2019
Office of the Waterfront	Overlook Walk & E/W Connection – Pike/Pine Improvements	\$13M	Downtown	Steve Pearce steve.pearce@seattle.gov (206) 684-8371	2019
Office of the Waterfront	Overlook Walk & E/W Connection - Union St	\$7M	Downtown	Angela Brady angela.brady@seattle.gov (206) 684-3115	2020
Office of the Waterfront	Overlook Walk & E/W Connection – Main & Washington Improvements	\$9M	Downtown	Angela Brady angela.brady@seattle.gov (206) 684-3115	2020

Disclaimer: This information is neither a guarantee of contracting opportunities, nor a promise of business and is subject to change. If you have any questions on the prospective projects, please contact the staff person identified for the project.

Visit the SDOT WMBE website for the most up-to-date information at www.seattle.gov/transportation/wmbe.htm or contact the SDOT WMBE-HUB Program Strategic Advisor, Edson Zavala at edson.zavala@seattle.gov.

Updated 9/2016

OFFICE OF THE WATERFRONT
Upcoming Contracting Opportunities

Listing updated August 2017



waterfrontseattle.org
 info@waterfrontseattle.org
 (206) 499-8040

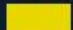
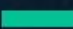



Project Name	Engineer's Estimate	Estimated Ad Date	Contact	Project Description	Flagging, Traffic Control	Demolition, Remediation	Excavation, Grading, Site Work	Shoring, Dewatering	Trucking	Concrete Roadway	Concrete Sidewalk, Curb Ramps	Specialty Finishes	Asphalt	Bridges, Retaining Walls	Structural Foundations	Building Construction	Over Water Work, Barging	Elevators	Drainage, Water Infrastructure	Electrical, Signals, Lighting	Channelization, Signage	Landscaping, Irrigation	Archeological Monitoring	Fencing, Site Security	Site Furnishings
CONSTRUCTION																									
13.8 kV Network Relocation [Joint project between Office of the Waterfront and Seattle City Light]	\$4M	Q4 2017	Barbara Lee (206) 615-1696	Advanced utility work related to the Waterfront Main Corridor project that will rebuild Alaskan Way and new Elliott Way.	X		X	X	X	X			X							X					
Building Demolition	\$100K	Q2 2018	Barbara Lee (206) 615-1696	Demolish existing building on Alaskan Way		X	X		X															X	
Alaskan Way Main Corridor and Utility Work	\$175 – 200M	Q4 2018	Barbara Lee (206) 615-1696	Rebuild Alaskan Way, new Elliott Way roadway, and connections to east-west streets (Columbia St, Seneca St, & Lenora St) to serve all modes of travel, and install new landscaped promenade along the waterfront. Includes utility work for Seattle City Light, Seattle Public Utilities, and private utilities.	X		X	X	X	X	X	X	X	X	X				X	X	X	X	X		X
Union St Pedestrian Connection	\$5 – 10M	Q2 2019	Angela Brady (206) 684-3115	A new pedestrian bridge connection on Union St between Western Avenue and Alaskan Way.	X		X	X	X			X		X	X			X	X	X	X	X		X	X
Pike and Pine Streetscape Improvements	\$10 – 15M	Q3 2019	Steve Pearce (206) 684-8371	Streetscape improvements along Pike St and Pine St	X		X	X	X	X	X	X	X						X	X	X	X			X
Waterfront Park [Joint project between Office of the Waterfront and Seattle Parks]	\$35 – 45M	Q4 2019	Kit Loo (206) 684-3669	Redesigned park on Union St Pier with new playground and water feature	X	X			X								X		X	X	X	X		X	X
Overlook Walk [Portions of contract may use General Contractor/Construction Manager method]	TBD	Q2 2020	Jessica Murphy (206) 684-0178	A new accessible bridge and building connection between Pike Place Market and the waterfront	X		X	X	X		X	X		X	X	X		X	X	X	X	X			X
Pioneer Square Street Improvements	\$8 – 10M	Q3 2020	Angela Brady (206) 684-3115	Streetscape improvements on several east-west streets in Pioneer Square	X		X	X	X	X	X	X	X						X	X	X	X			X
DESIGN																									
Bell Street	\$1.5 – 2M	Q1 2018	Angela Brady (206) 684-3115	Extension of the Bell Street Park between 1st Ave and Elliott Ave	X		X	X	X	X	X	X	X						X	X	X	X			X
Pioneer Square Street Improvements	\$2 – 4M	Q1 2018	Angela Brady (206) 684-3115	Streetscape improvements on several east-west streets in Pioneer Square	X		X	X	X	X	X	X	X						X	X	X	X			X

Disclaimer: This information is neither a guarantee of contracting opportunities, nor a promise of business and is subject to change. If you have any questions on the prospective projects, please contact the staff person identified for the project.

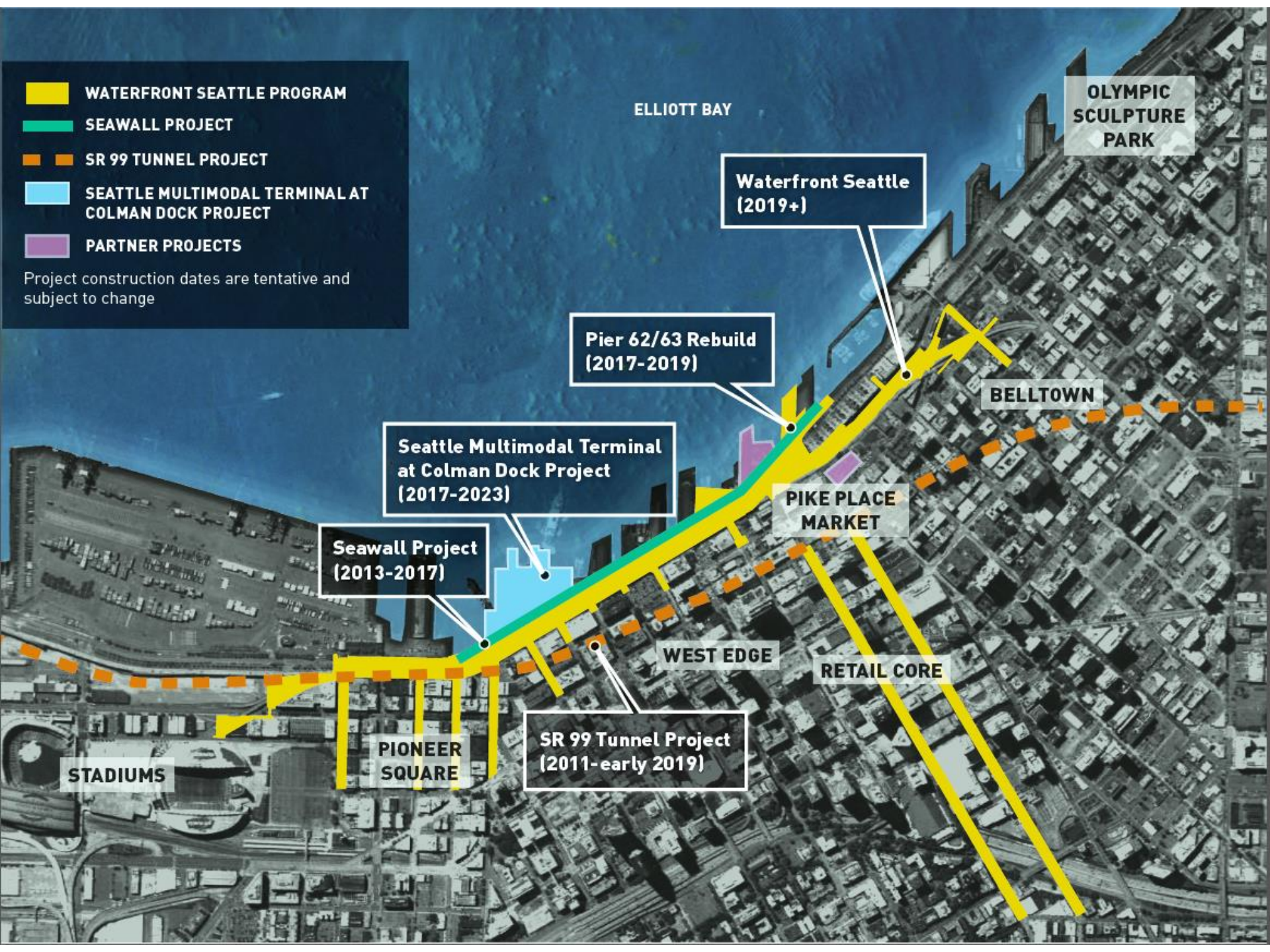


CONSTRUCTION SHOWCASE

September 29, 2017

-  WATERFRONT SEATTLE PROGRAM
-  SEAWALL PROJECT
-  SR 99 TUNNEL PROJECT
-  SEATTLE MULTIMODAL TERMINAL AT COLMAN DOCK PROJECT
-  PARTNER PROJECTS

Project construction dates are tentative and subject to change



WATERFRONT SEATTLE PROGRAM



RAILROAD WAY	PIONEER SQUARE	TRANSIT HUB	HISTORIC PIERS	CENTRAL PUBLIC SPACE	BELLTOWN
<ul style="list-style-type: none"> 1 WATERFRONT 2 PIONEER SQUARE 3 STADIUMS 	<ul style="list-style-type: none"> 1 ALASKAN WAY 2 WATERFRONT PROMENADE 3 WASHINGTON ST. BOAT LANDING 4 S. KING ST. 5 S. MAIN ST. 6 S. WASHINGTON ST. 7 HABITAT INTERTIDAL ZONE 	<ul style="list-style-type: none"> 1 ALASKAN WAY 2 WATERFRONT PROMENADE 3 COLUMBIA ST. 4 MARION ST. PEDESTRIAN BRIDGE 5 COLMAN DOCK TERMINAL REPLACEMENT 6 YESLER WAY 	<ul style="list-style-type: none"> 1 ALASKAN WAY 2 WATERFRONT PROMENADE 3 SENECA ST. 	<ul style="list-style-type: none"> 1 ELLIOTT WAY 2 WATERFRONT PROMENADE 3 UNION ST. 4 WATERFRONT PARK REBUILD 5 OCEAN PAVILION 6 PIERS 62/63 PHASE 1 REBUILD 7 OVERLOOK WALK 8 PIKE/PINE STS. 	<ul style="list-style-type: none"> 1 ELLIOTT WAY 2 LENORA ST. PED BRIDGE RETROFIT 3 BELL ST. 4 PORTAL PARK

NEAR-TERM CONSTRUCTION CONTRACTING OPPORTUNITIES

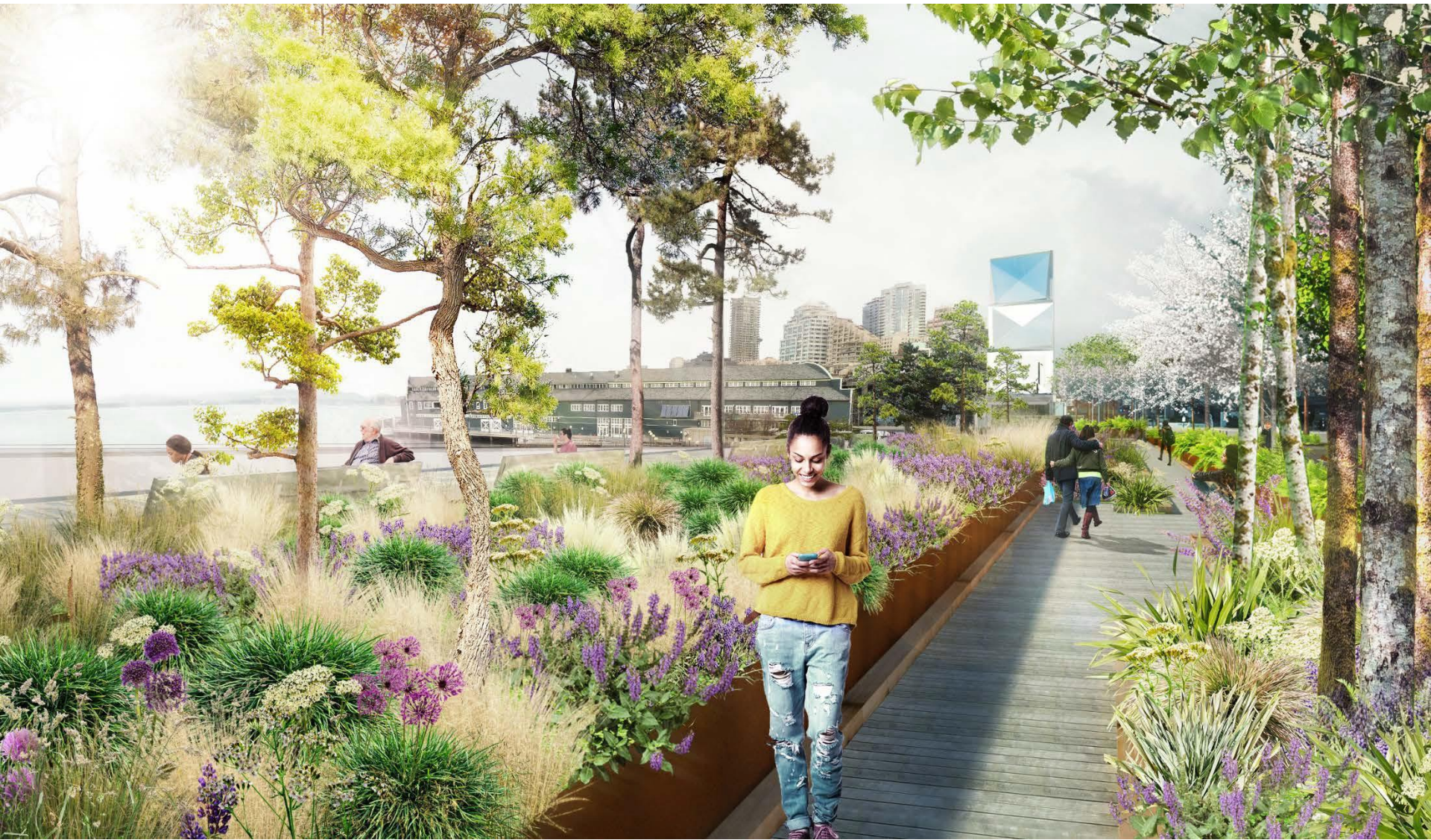


- 13.8 kV Network Relocation Project
 - \$4M estimate
 - Anticipated advertisement date: Q4 2017
 - Anticipated construction start: Q1 2018
- Building Demolition Project
 - \$100K estimate
 - Anticipated advertisement date: Q2 2018
 - Anticipated construction start: mid-2018

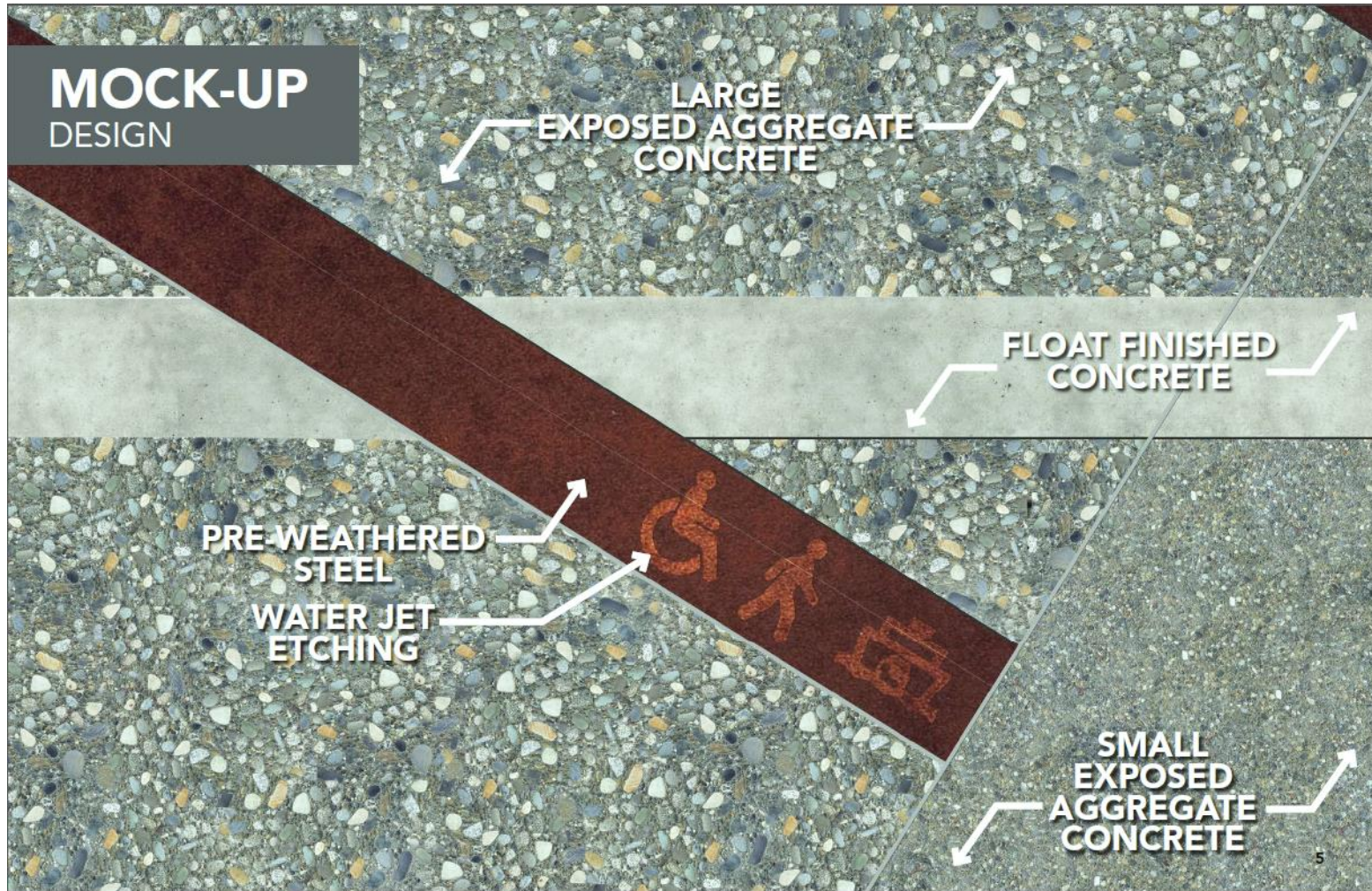
MAIN CORRIDOR



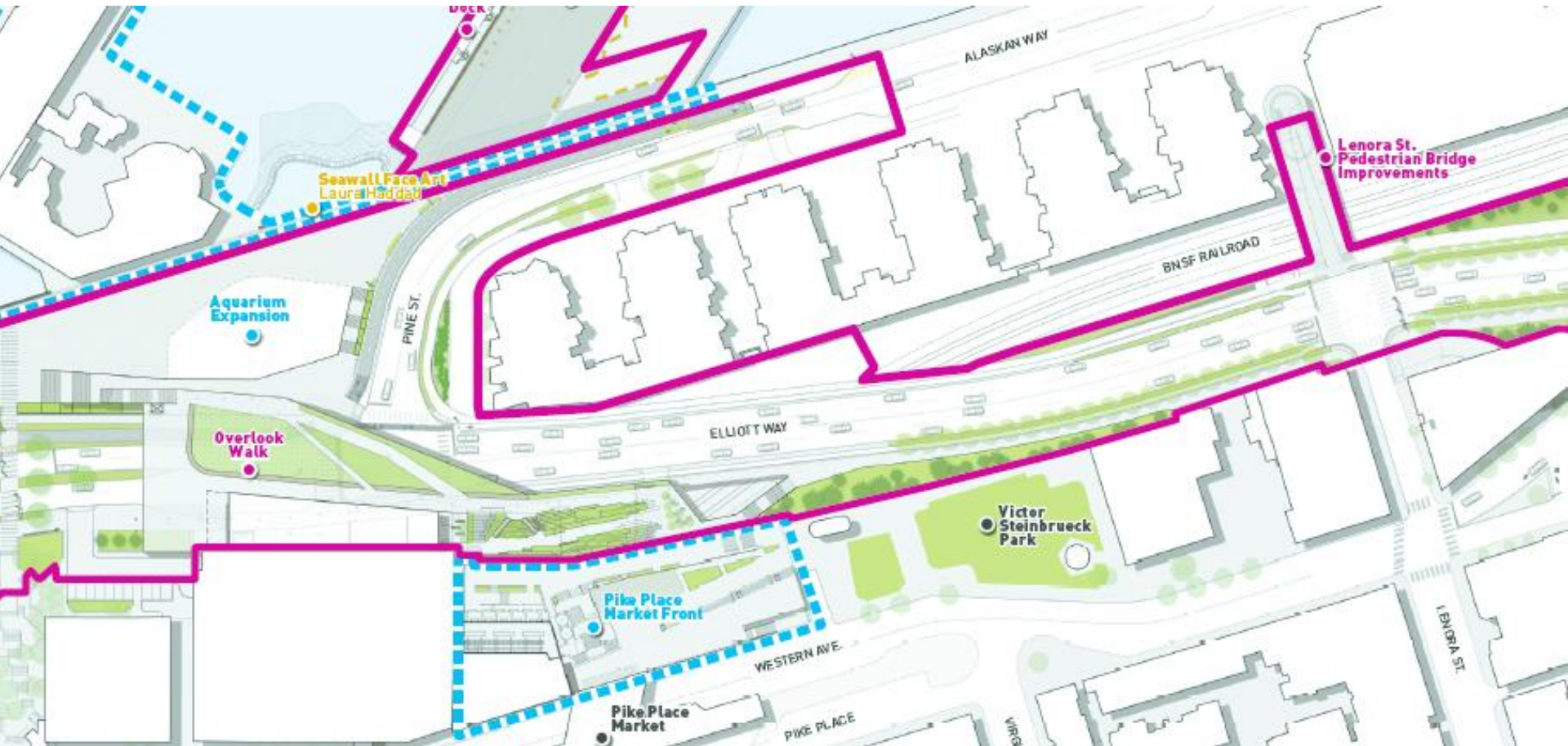
PROMENADE



DECORATIVE PAVEMENT



BRIDGE WORK



OVERLOOK WALK



EAST-WEST CONNECTIONS



WATERFRONT PARK





On-Call Streetcar Spot Improvements

Project Manager	Jonathan Dong
Email	Jonathan.dong@seattle.gov
Phone	(206) 233-8564
Website	N/A

High Level Scope	This contract will be done as a series of Work Authorizations. The scope, schedule, and budget for these Work Authorizations orders will vary. There is no minimum guarantee of work under this solicitation.
Contracting Opportunities	<p>Core Services:</p> <p>A core function is any element of a particular scope of work which SDOT is certain will be performed and completed through all phases of this Contract. Consultants shall focus on the core functions when developing meaningful and realistic integration of WMBE roles in proposed Inclusion Plans.</p> <p>SDOT has identified the following Core functions in this scope of work:</p> <ul style="list-style-type: none">• Train SDOT staff to utilize Transit Analysis Software, VISSIM• Concept of Operations Development• Alternatives development, analysis, and evaluation• Designing signal modifications for transit queue jumps• Identifying and designing the connections to existing or proposed facilities for seamless transitions• Identification of coordination issues with other stakeholders, WSDOT, KC Metro, etc.• Coordination with and consideration of other Modal Plans and other roadway users• Traffic signal analysis (LOS) and traffic modeling• Data collection (vehicle volumes, classification and lane utilization)• Determination of potential ROW needs (both permanent and temporary) and encroachment issues• Curb to curb analysis and rechannelization; channelization and signage plans• Parking analysis (parking utilization study/report) and parking management strategies• Preparation of base map using GIS or aerial photos, or full topographic survey depending upon project scope• Intersection and driveway designs; sight distance analysis• ITS, traffic signal design• Street and pedestrian lighting design• Engineer's estimate• Deliverables will include interim design submittal packages





Scope Details	This solicitation will be posted through the City of Seattle E-Bid Exchange portal.
Contract Estimate(s)	Contract size \$285k

Schedule Summary	SDOT is planning to release this solicitation in November 2017
<p>The consultant contract opportunity will be announced on http://consultants.seattle.gov/. The Formal Solicitations are bid through the City of Seattle E-Bid Exchange system.</p> <p>This information is neither a guarantee of contracting opportunities, nor a promise of business and is subject to change. If you have any questions on the prospective projects, please contact the staff person identified for the project.</p>	



CONSTRUCTION SCHEDULE



	2017	2018	2019	2020	2021	2022	2023
WSDOT PROJECTS							
Bored Tunnel			◆ Tunnel open to traffic, early 2019				
Alaskan Way Viaduct Demolition							
Battery St Tunnel decommission							
South Access							
Colman Dock							
WATERFRONT SEATTLE PROJECTS							
Pier 62 Rebuild & Habitat Imp.							
Early Works							
Alaskan Way & Elliott Way					◆ New Alaskan & Elliott Way open to traffic, July		
Promenade							
East/West Connections							
Overlook Walk							
Waterfront Park							
Marion Street Bridge*							
OTHER CONSTRUCTION PROJECTS							
Center City Connector							
WA State Convention Center							
Lander St Overpass							
Aquarium Expansion							

NOTES:

- 1) Early Works may include: Columbia St drainage & areaway work, SCL vaults & duct banks, telecom work, building demolition, etc.
 - 2) Alaskan Way & Elliott Way includes: connections to Columbia St, Seneca St, Pine St, and Lenora St; Overlook Walk Foundations; Marion St Bridge Foundations; and Kiosk Foundations.
 - 3) East/West Connections include: Bell St, Union St Pedestrian Connection, Main and Washington Street Improvements, Pike and Pine Streetscape Improvements
 - 4) Construction dates subject to change pending: a) Tunnel & AWW Demolition completion dates and, b) Ongoing evaluation of sequencing and packaging assumptions for all projects.
- *Whether WSDOT or City will construct the Marion Street Bridge project is still under deliberation.



Document Controls

Project Manager	Therese Casper
Email	Therese.Casper@seattle.gov
Phone	(206) 684-8764
Website	http://www.seattle.gov/transportation/accessibleMtBaker.htm

High Level Scope	Provide document control services for various
Contracting Opportunities (1)	<p>Accessible Mount Baker – Design Contract</p> <p>The Accessible Mt. Baker Plan will transform an auto-oriented area into a pedestrian and transit-oriented destination that is safe for everyone. The Plan will reconfigure the intersection of Rainier Ave South (Rainier Ave) and Martin Luther King, Jr. Way (MLK Way) and transform the Mt. Baker station area into a safe, comfortable and dignified place for people to walk, bike, and make transit connections.</p> <p>The scope of work will be for the design of this intersection including 30/60/90/100% design</p> <p>The categories of consulting services that may be needed for this project include, but are not limited to:</p> <ul style="list-style-type: none"> •Project Management •Data Collection •Utilities •Right of Way Documents •VE & Constructability •Enviro. Documentation & Permitting •Underground utility verification and potholing •Traffic/Multimodal Analysis & Modelling •Complete Streets Design •Visualizations •Roadway and Pavement •Electrical & Street Lighting •Signals, Lighting, ITS •Civil Engineering •Site Preparation & Staging Plans •30% PS&E •Quality Control & Assurance •Stormwater & Stormwater Code Compliance •Geotechnical & Structural •Urban & Landscape Design •Cost Estimating





Scope Details	Contracting Opportunities listed under A, B, & C are anticipated to be released as stand-alone, full solicitations. Each solicitation will be posted through the City of Seattle E-Bid Exchange portal.
Contract Estimate(s)	Approximately \$2 million.

Schedule Summary	SDOT is looking to release this in 12/2017
<p>The consultant contract opportunity will be announced on http://consultants.seattle.gov/. The Formal Solicitations are bid through the City of Seattle E-Bid Exchange system. This information is neither a guarantee of contracting opportunities, nor a promise of business and is subject to change. If you have any questions on the prospective projects, please contact the staff person identified for the project.</p>	

