



## UW MICMA Program Manager and Evaluation Consultant Support

<b>Project Manager</b>	Adiam Emery
<b>Email</b>	Adiam.Emery@seattle.gov
<b>Phone</b>	(206) 684-5121
<b>Website</b>	N/A

<b>High Level Scope</b>	SDOT seeks a skilled Consultant available for immediate work to ensure that the UW MICMA ITS project meets the FHWA grant requirements, including evaluation, and to support the successful completion of the project.
<b>Contracting Opportunities (1)</b>	This contracting opportunity is anticipated to be released as stand-alone, full solicitation. The solicitation will be posted through the City of Seattle E-Bid Exchange portal.
<b>Scope Details</b>	<p>SDOT has identified the following Core Services in this Scope of Work:</p> <ul style="list-style-type: none"><li>• Developing and applying means to monitor the project progress and schedule, including budgetary progress.</li><li>• Deliver and execute a pro-active risk identification and avoidance or mitigation strategy.</li><li>• Proactively track project progress.</li><li>• Supporting SDOT's monthly progress reporting.</li><li>• Support in developing RFPs/RFQs, and goods procurement documents.</li><li>• Facilitating issue resolution, including proposing resolution approaches.</li><li>• Other tasks directly related to Program Management of the UW MICMA ITS project, which may include assessing resource needs, developing presentations for upper management, and coordination with other Divisions/Departments.</li><li>• Develop scope of services for project evaluation, including coordination with FHWA.</li><li>• Create a data collection plan and oversee data collection by SDOT and others.</li><li>• Provide staff to conduct certain aspects of the data collection, to include pedestrian counting to confirm pedestrian detection system, and monitoring of signal operations response to GiveMeGreen and associated cyclist behaviors.</li><li>• Conduct evaluation, to include statistical analysis of data, and reporting.</li></ul>
<b>Contract Estimate(s)</b>	Approximately \$500,000.

<b>Schedule Summary</b>	SDOT is looking to release this in September 2018
The consultant contract opportunity will be announced on <a href="http://consultants.seattle.gov/">http://consultants.seattle.gov/</a> . The Formal Solicitations are bid through the <b>City of Seattle E-Bid Exchange</b> system.	





## ITS Design and Signal Timing and Modeling Consultant Support

<b>Project Manager</b>	Adiam Emery
<b>Email</b>	Adiam.Emery@seattle.gov
<b>Phone</b>	(206) 684-5121
<b>Website</b>	N/A

<b>High Level Scope</b>	SDOT seeks a skilled Consultant available for immediate work in support of the timely and cost-efficient delivery of the Move Seattle ITS program, and ITS projects across SDOT. The goal of this consultant solicitation to identify and retain a highly capable consulting teams with exceptional skills, experience, availability and the flexibility to all phases of ITS projects in support of the timely and cost-efficient delivery of the Move Seattle ITS program.
<b>Contracting Opportunities (1)</b>	This contracting opportunity is anticipated to be released as stand-alone, full solicitation. The solicitation will be posted through the City of Seattle E-Bid Exchange portal.
<b>Scope Details</b>	SDOT has identified the following Core Services in this Scope of Work: <ul style="list-style-type: none"><li>• Developing ITS Plans, Specifications and Estimates (PS&amp;E) packages for bid by private contractors.</li><li>• Developing work orders detailing ITS field designs for implementation by SDOT forces.</li><li>• VISSIM modeling for the purpose of signal timing plan development</li><li>• Synchro modeling for the purpose of signal timing plan development</li><li>• SCOOT timing plan development</li><li>• Other traffic signal timing plan development including coordinated and traffic responsive plans.</li></ul>
<b>Contract Estimate(s)</b>	Approximately \$900,000.

<b>Schedule Summary</b>	SDOT is looking to release this in September 2018
<p>The consultant contract opportunity will be announced on <a href="http://consultants.seattle.gov/">http://consultants.seattle.gov/</a>. The Formal Solicitations are bid through the <b>City of Seattle E-Bid Exchange</b> system. This information is neither a guarantee of contracting opportunities, nor a promise of business and is subject to change. If you have any questions on the prospective projects, please contact the staff person identified for the project.</p>	





## Burke-Gilman Trail Construction Outreach

<b>Project Manager</b>	Louisa Galassini
<b>Email</b>	Louisa.Galassini@seattle.gov
<b>Phone</b>	(206) 615-0185
<b>Website</b>	<a href="https://www.seattle.gov/transportation/projects-and-programs/programs/bike-program/burke-gilman-trail-missing-link-project">https://www.seattle.gov/transportation/projects-and-programs/programs/bike-program/burke-gilman-trail-missing-link-project</a>

<b>High Level Scope</b>	Provide construction communications and outreach services for the length of construction and project closeout, approximately 30 months. Construction is scheduled to begin in early 2019.
<b>Contracting Opportunities</b>	<p><b>Burke-Gilman Trail Missing Link Project</b></p> <ul style="list-style-type: none"><li>• <u>Scope Summary</u><ul style="list-style-type: none"><li>○ Scope will likely include the following tasks: Outreach Project Management and Strategic Planning, Outreach Materials Development, Public Events and Meetings, Internal and External Coordination and Correspondence, and other outreach activities. RFP will likely include minimum qualification of controversial transportation construction communications experience, and in-depth knowledge of the geographic area and key stakeholders.</li></ul></li><li>• <u>Estimate:</u><ul style="list-style-type: none"><li>○ \$450,000</li></ul></li><li>• <u>Funding Notes:</u><ul style="list-style-type: none"><li>○ The total project estimate is \$26 million with funding from the Levy to Move Seattle.</li></ul></li></ul>
<b>Scope Details</b>	Contracting Opportunities listed above are anticipated to be released as stand-alone, full solicitations. Each solicitation will be posted through the City of Seattle E-Bid Exchange portal.
<b>Contract Estimate(s)</b>	\$450,000

<b>Schedule Summary</b>	SDOT is looking to release this in Fall 2018.
<p>The consultant contract opportunity will be announced on <a href="http://consultants.seattle.gov/">http://consultants.seattle.gov/</a>. The Formal Solicitations are bid through the <b>City of Seattle E-Bid Exchange</b> system.</p> <p>This information is neither a guarantee of contracting opportunities, nor a promise of business and is subject to change. If you have any questions on the prospective projects, please contact the staff person identified for the project.</p>	





## Fairview Ave N Bridge Replacement

<b>Project Manager</b>	Marilyn Yim
<b>Email</b>	Marilyn.yim@seattle.gov
<b>Phone</b>	(206) 684-3190
<b>Website</b>	<a href="https://www.seattle.gov/transportation/projects-and-programs/programs/bridges-stairs-and-other-structures/bridges/fairview-ave-n-bridge-replacement">https://www.seattle.gov/transportation/projects-and-programs/programs/bridges-stairs-and-other-structures/bridges/fairview-ave-n-bridge-replacement</a>

<b>High Level Scope</b>	Provide construction communications and outreach services for the length of construction and project closeout, approximately 15 months. Construction is scheduled to begin in late 2018 and will include temporary closure of the bridge.
<b>Contracting Opportunities (1)</b>	<p><b>Fairview Ave N Bridge Replacement</b></p> <ul style="list-style-type: none"><li>• <u>Scope Summary</u><ul style="list-style-type: none"><li>○ Scope will likely include the following tasks: Outreach Project Management and Strategic Planning, Outreach Materials Development, Public Events and Meetings, Internal and External Coordination and Correspondence, and other outreach activities. RFP will likely include minimum qualification of controversial transportation construction communications experience, and in-depth knowledge of the geographic area and key stakeholders.</li></ul></li><li>• <u>Estimate:</u><ul style="list-style-type: none"><li>○ \$400,000</li></ul></li><li>• <u>Funding Notes:</u><ul style="list-style-type: none"><li>○ The total project estimate is \$42 million, and the project is full funded in 3 ways: Bridging the Gap Levy, the federal Bridge Replacement Advisory Committee, and the Move Seattle Levy.</li></ul></li></ul>
<b>Scope Details</b>	Contracting Opportunity listed is anticipated to be released as stand-alone, full solicitations. This solicitation will be posted through the City of Seattle E-Bid Exchange portal.
<b>Contract Estimate(s)</b>	\$400,000 – Federally-Funded

<b>Schedule Summary</b>	SDOT is looking to release this in Fall 2018.
The consultant contract opportunity will be announced on <a href="http://consultants.seattle.gov/">http://consultants.seattle.gov/</a> . The Formal Solicitations are bid through the <b>City of Seattle E-Bid Exchange</b> system. This information is neither a guarantee of contracting opportunities, nor a promise of business and is subject to change. If you have any questions on the prospective projects, please contact the staff person identified for the project.	



# SDOT UPCOMING CONSULTANT OPPORTUNITIES

Listing Updated Quarterly



Projects	Description	Design Consultant Opportunities	Construction Management Opportunities	Outreach Consultant Opportunities During Design	Outreach Consultant Opportunities During Construction	Planning	Other	Project Manager
Consultant Contracting Accessible Mount Baker	The Accessible Mt. Baker Plan will transform an auto-oriented area into a pedestrian and transit-oriented destination that is safe for everyone. The Plan will reconfigure the intersection of Rainier Ave South (Rainier Ave) and Martin Luther King, Jr. Way (MLK Way) and transform the Mt. Baker station area into a safe, comfortable and dignified place for people to walk, bike, and make transit connections. This contract will be for design services and design support during construction.	Q1 2018	2022-23	N/A	2022-23	N/A	N/A	Therese Casper therese.casper@seattle.gov 206-684-8764
Fremont RapidRide Planing, Design & Environmental	Zero to 30% planning, design and environmental for the Fremont RapidRide Corridor (a Seattle RapidRide Expanison Program corridor) with the provision for amending the contract to include all services associate with completing 60%, 90% and 100% design milestones. Work may include traffic analysis, traffic modeling, signals & ITS, and multimodal design. There is the potential for this corridor to be federally funded.	Q2/Q3 2018						Alison Townsend alison.townsend@seattle.gov 206-233-3780
Market/45th RapidRide Planning, Design & Environmental	Zero to 30% planning, design and environmental for the Market/45th RapidRide Corridor (a Seattle RapidRide Expansion Program corridor) with the provision for amending the contract to include all services associated with 60%, 90% and 100% design milestones. Work may include traffic analysis, traffic modeling, signals & ITS, and multimodal design.	Q2/Q3 2018						Alison Townsend alison.townsend@seattle.gov 206-233-3780
Madison BRT - CM Services	Provide on-site RE, inspectors, office engineer/document control team to manage the construction of this bus rapid transit project. A. Madison BRT (RE/Inspectors only) B. Madison BRT (Office Engineer/Doc Control only)		Q3 2019					Mark Sliger mark.sliger@seattle.gov 206-733-9936
Northgate Ped Bridge	This project constructs a new pedestrian and bike bridge over I-5 in Northgate to improve connections between the east and west sides of the community and to maximize the use of transit facilities, including the King County Transit Center and the future Sound Transit Link light rail station.		Q2 2018					Mark Sliger mark.sliger@seattle.gov 206-733-9936

Disclaimer: This information is neither a guarantee of contracting opportunities, nor a promise of business and is subject to change. If you have any questions on the prospective projects, please contact the staff person identified for the project.

Disclaimer: Updated 5/2017.This information is neither a guarantee of contracting opportunities, nor a promise of business and is subject to change. If you have any questions on the prospective projects, please contact the staff person identified for the project. Visit the SDOT WMBE website for the most up-to-date information at [www.seattle.gov/transportation/oeei-wmbe](http://www.seattle.gov/transportation/oeei-wmbe) or contact the SDOT Office of Equity and Economic Inclusion Interim WMBE Advisor, Viviana Y. Garza at [viviana.garza@seattle.gov](mailto:viviana.garza@seattle.gov).

Projects	Description	Design Consultant Opportunities	Construction Management Opportunities	Outreach Consultant Opportunities During Design	Outreach Consultant Opportunities During Construction	Planning	Other	Project Manager
ROSTER SOLICITATION: On-Call Signal, Lighting, and ITS Design Services	The Engineering Services Group within SDOT Capital Projects delivers in-house plans for a range of improvements in Seattle's public right of way. Currently, traffic signals, pedestrian signals, RRFBs, pedestrian pushbutton upgrades, street lighting, pedestrian lighting, and RTIS improvements are largely designed in-house. As a result of peak workload from the Move Seattle Levy, it is anticipated that additional support will be needed to prepare: foundation design, traffic modeling, traffic analysis reports, plans, specifications, estimate, SCL service applications, QA-QC reviews, and perform research of as-built records.	Q2 2018						Erich Ellis erich.ellis@seattle.gov 206-684-5840
New CM On-Call Contracts	4 or 5 Non-federal contracts, 1 federal contract. Scope may be around \$4-5M each contract.		Q4 2018					Mark Sliger mark.sliger@seattle.gov 206-733-9936
Structural On-Call Services for Federally Funded Projects	Perform engineering services for SDOT in study, preliminary design, value engineering, PS&E, cost estimating, and construction. Other structural services include but not limited to bridge load rating, bridge seismic retrofit, rehabilitation or replacement, retaining wall design. Specialty services will include but not limited to: tunneling, areaway, underwater inspection, movable bridge.	Q4 2018?						Yuling Teo yuling.teo@seattle.gov 206-733-9244
Ballard Bridge Planning Study	The Ballard Bridge is over 100 years old and carries more than 57,000 vehicles per day. This planning study would explore alternatives and identify a recommended replacement alternative and associated costs. Regarding the recommended alternative, this study should identify the: essential functional needs, right-of-way needs, types of environmental permitting required, and ways to minimize impact to the navigable channel and 15th Ave W corridor traffic.					Q3/Q4 2018 - Q2 2019		Wes Ducey wes.ducey@seattle.gov 206-684-7033
Pedestrian Wayfinding Program	Develop a pedestrian wayfinding program. Conduct user research and stakeholder outreach, develop movement plan and system design, prepare maps and prototypes, recommend governance and maintenance strategies, user test design, develop design standards and implementation plan.	Q1 2018		Q1/Q2 2018				Aditi Kambuj aditi.kambuj@seattle.gov 206-615-0429

Disclaimer: This information is neither a guarantee of contracting opportunities, nor a promise of business and is subject to change. If you have any questions on the prospective projects, please contact the staff person identified for the project.

Disclaimer: Updated 5/2017. This information is neither a guarantee of contracting opportunities, nor a promise of business and is subject to change. If you have any questions on the prospective projects, please contact the staff person identified for the project. Visit the SDOT WMBE website for the most up-to-date information at [www.seattle.gov/transportation/oeei-wmbe](http://www.seattle.gov/transportation/oeei-wmbe) or contact the SDOT Office of Equity and Economic Inclusion Interim WMBE Advisor, Viviana Y. Garza at [viviana.garza@seattle.gov](mailto:viviana.garza@seattle.gov).





## Northgate Pedestrian Bridge---CM services

<b>Project Manager</b>	Mark Sliger
<b>Email</b>	mark.sliger@seattle.gov
<b>Phone</b>	(206) 733-9936
<b>Website</b>	N/A

<b>High Level Scope</b>	Provide preconstruction design support leading up to the advertisement and award of the construction contract. Provide on-site resident engineer(RE), multiple inspectors, and office engineer/document control services for this \$23M bridge project. This team will work out of a field office and the estimated duration of the construction contract is approximately 21 months. The bridge to be built will span I-5 and will require coordination with WSDOT, Sound Transit, and other agencies.
<b>Contracting Opportunities</b>	<ul style="list-style-type: none"><li>• <u>Scope Summary</u><ul style="list-style-type: none"><li>○ Preconstruction design support (90% constructability review, bid review, etc.)</li><li>○ 5 FTE's during construction: This team will provide full oversight of all contractor work. The estimated duration for the construction is April 2019 thru December 2020. We're estimating 6 months of closeout activities starting in January 2021 and concluding in June 2021.</li></ul></li><li>• <u>Funding Notes:</u> FHWA/FTA</li></ul>
<b>Scope Details</b>	This contracting opportunity is anticipated to be released as stand-alone, full solicitation. The solicitation will be posted through the City of Seattle E-Bid Exchange portal.
<b>Contract Estimate</b>	Approximately \$ 3.3M
<b>Schedule Summary</b>	SDOT intends to advertise this RFQ in March/April 2018

The consultant contract opportunity will be announced on <http://consultants.seattle.gov/>. The Formal Solicitations are bid through the **City of Seattle E-Bid Exchange** system. This information is neither a guarantee of contracting opportunities, nor a promise of business and is subject to change. If you have any questions on the prospective projects, please contact the staff person identified for the project.





## Madison BRT---CM services (2 separate RFQ's)

<b>Project Manager</b>	Mark Sliger
<b>Email</b>	Mark.Sliger@seattle.gov
<b>Phone</b>	(206) 733-9936
<b>Website</b>	N/A

<b>High Level Scope</b>	Provide on-site RE, inspectors, office engineer/document control team to manage the construction of this bus rapid transit project. EE = \$75M ±; duration = 24mo± ; FTA funded
<b>Contracting Opportunities</b>	<p><b>A. Madison BRT (RE/Inspectors only)</b></p> <ul style="list-style-type: none"> <li><u>Scope Summary</u> <ul style="list-style-type: none"> <li>7-9 FTE's ± : one fulltime RE, multiple inspectors; This team will manage the day to day oversight of all contractor work and will report directly to the City's Construction Engineering Supv.(CE); Tentative NTP for construction is Jan 2019 and completion in Dec 2020; (est duration = 24 mo ±)</li> </ul> </li> <li><u>Estimate:</u> <ul style="list-style-type: none"> <li>\$6.5M</li> </ul> </li> </ul> <p><b>B. Madison BRT (Office Engineer/Doc Control only)</b></p> <ul style="list-style-type: none"> <li><u>Scope Summary</u> <ul style="list-style-type: none"> <li>2 FTE's ± : intend to hire an office engineer and document control team separately from the RE/Inspectors but they'll be a part of the overall CM team managing the construction of this project. The SDOT office engineer assigned to this project will provide guidance and oversight to the consultant OE/Doc Control team being hired. Tentative NTP for construction is Jan 2019 and completion in Dec 2020; (est duration = 24 mo ±)</li> </ul> </li> <li><u>Estimate:</u> <ul style="list-style-type: none"> <li>\$1.5M</li> </ul> </li> </ul>
<b>Scope Details</b>	This solicitation will be posted through the City of Seattle E-Bid Exchange portal.
<b>Contract Estimate(s)</b>	RE/Inspector---contract size \$6.5M±; OE/Doc Control---contract size \$1.5M±

<b>Schedule Summary</b>	SDOT is planning to release these solicitations in Q2 2018
<p>The consultant contract opportunity will be announced on <a href="http://consultants.seattle.gov/">http://consultants.seattle.gov/</a>. The Formal Solicitations are bid through the <b>City of Seattle E-Bid Exchange</b> system.</p> <p>This information is neither a guarantee of contracting opportunities, nor a promise of business and is subject to change. If you have any questions on the prospective projects, please contact the staff person identified for the project.</p>	





**OFFICE OF THE WATERFRONT**  
**Upcoming Contracting Opportunities**

Listing updated August 2017



waterfrontseattle.org  
 info@waterfrontseattle.org  
 (206) 499-8040

Project Name	Engineer's Estimate	Estimated Ad Date	Contact	Project Description	Flagging, Traffic Control	Demolition, Remediation	Excavation, Grading, Site Work	Shoring, Dewatering	Trucking	Concrete Roadway	Concrete Sidewalk, Curb Ramps	Specialty Finishes	Asphalt	Bridges, Retaining Walls	Structural Foundations	Building Construction	Over Water Work, Barging	Elevators	Drainage, Water Infrastructure	Electrical, Signals, Lighting	Channelization, Signage	Landscaping, Irrigation	Archeological Monitoring	Fencing, Site Security	Site Furnishings
<b>CONSTRUCTION</b>																									
<b>13.8 kV Network Relocation</b> [Joint project between Office of the Waterfront and Seattle City Light]	\$4M	Q4 2017	Barbara Lee (206) 615-1696	Advanced utility work related to the Waterfront Main Corridor project that will rebuild Alaskan Way and new Elliott Way.	X		X	X	X	X			X							X					
<b>Building Demolition</b>	\$100K	Q2 2018	Barbara Lee (206) 615-1696	Demolish existing building on Alaskan Way		X	X		X															X	
<b>Alaskan Way Main Corridor and Utility Work</b>	\$175 – 200M	Q4 2018	Barbara Lee (206) 615-1696	Rebuild Alaskan Way, new Elliott Way roadway, and connections to east-west streets (Columbia St, Seneca St, & Lenora St) to serve all modes of travel, and install new landscaped promenade along the waterfront. Includes utility work for Seattle City Light, Seattle Public Utilities, and private utilities.	X		X	X	X	X	X	X	X	X	X				X	X	X	X	X		X
<b>Union St Pedestrian Connection</b>	\$5 – 10M	Q2 2019	Angela Brady (206) 684-3115	A new pedestrian bridge connection on Union St between Western Avenue and Alaskan Way.	X		X	X	X			X		X	X			X	X	X	X	X		X	X
<b>Pike and Pine Streetscape Improvements</b>	\$10 – 15M	Q3 2019	Steve Pearce (206) 684-8371	Streetscape improvements along Pike St and Pine St	X		X	X	X	X	X	X	X						X	X	X	X			X
<b>Waterfront Park</b> [Joint project between Office of the Waterfront and Seattle Parks]	\$35 – 45M	Q4 2019	Kit Loo (206) 684-3669	Redesigned park on Union St Pier with new playground and water feature	X	X			X								X		X	X	X	X		X	X
<b>Overlook Walk</b> [Portions of contract may use General Contractor/Construction Manager method]	TBD	Q2 2020	Jessica Murphy (206) 684-0178	A new accessible bridge and building connection between Pike Place Market and the waterfront	X		X	X	X		X	X		X	X	X		X	X	X	X	X			X
<b>Pioneer Square Street Improvements</b>	\$8 – 10M	Q3 2020	Angela Brady (206) 684-3115	Streetscape improvements on several east-west streets in Pioneer Square	X		X	X	X	X	X	X	X						X	X	X	X			X
<b>DESIGN</b>																									
<b>Bell Street</b>	\$1.5 – 2M	Q1 2018	Angela Brady (206) 684-3115	Extension of the Bell Street Park between 1st Ave and Elliott Ave	X		X	X	X	X	X	X	X						X	X	X	X			X
<b>Pioneer Square Street Improvements</b>	\$2 – 4M	Q1 2018	Angela Brady (206) 684-3115	Streetscape improvements on several east-west streets in Pioneer Square	X		X	X	X	X	X	X	X						X	X	X	X			X

Disclaimer: This information is neither a guarantee of contracting opportunities, nor a promise of business and is subject to change. If you have any questions on the prospective projects, please contact the staff person identified for the project.





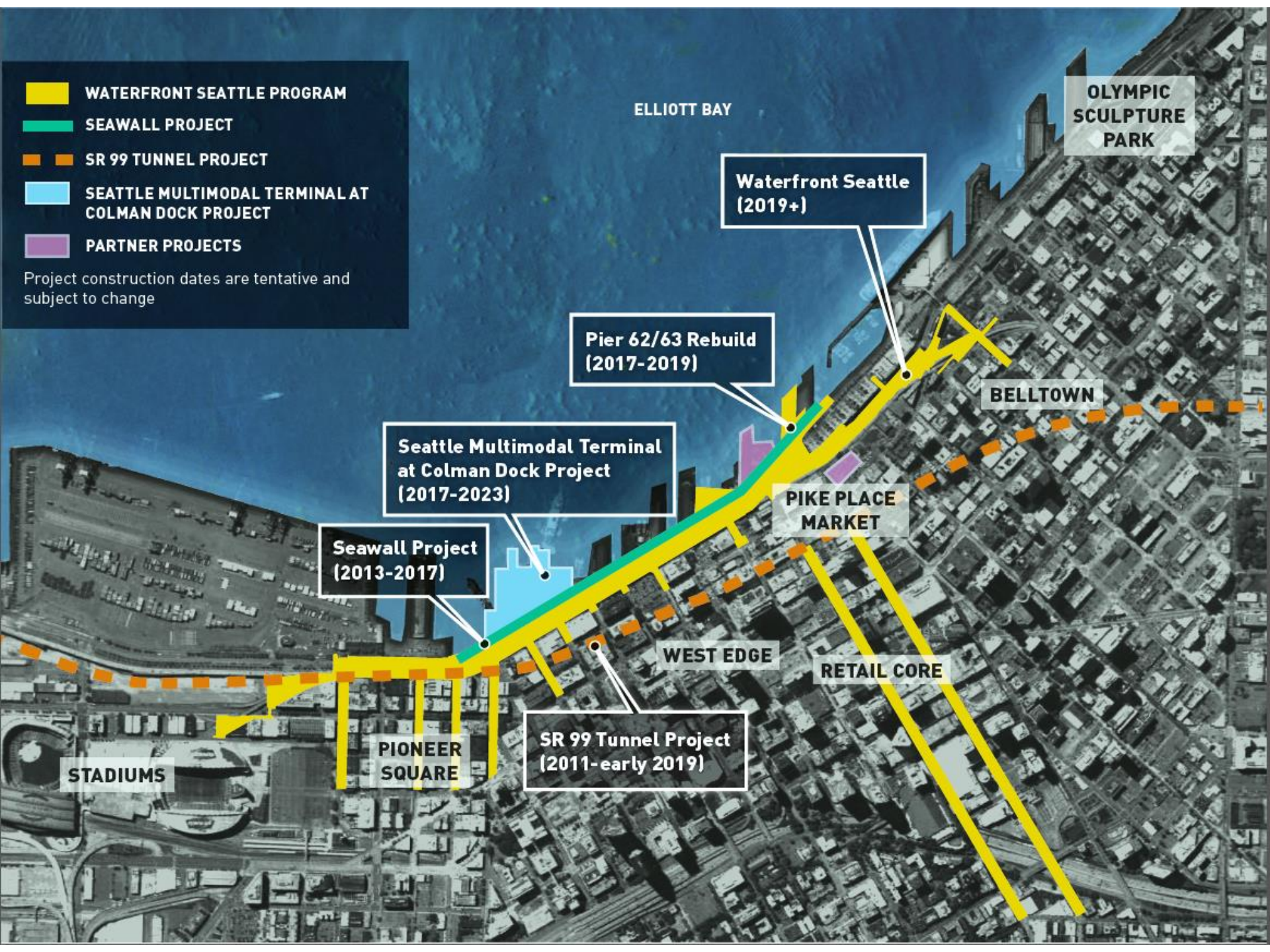
# CONSTRUCTION SHOWCASE

September 29, 2017



-  WATERFRONT SEATTLE PROGRAM
-  SEAWALL PROJECT
-  SR 99 TUNNEL PROJECT
-  SEATTLE MULTIMODAL TERMINAL AT COLMAN DOCK PROJECT
-  PARTNER PROJECTS

Project construction dates are tentative and subject to change



ELLIOTT BAY

OLYMPIC  
SCULPTURE  
PARK

Waterfront Seattle  
(2019+)

Pier 62/63 Rebuild  
(2017-2019)

Seattle Multimodal Terminal  
at Colman Dock Project  
(2017-2023)

Seawall Project  
(2013-2017)

PIKE PLACE  
MARKET

BELLTOWN

WEST EDGE

RETAIL CORE

SR 99 Tunnel Project  
(2011-early 2019)

PIONEER  
SQUARE

STADIUMS



# WATERFRONT SEATTLE PROGRAM



## RAILROAD WAY

- 1 WATERFRONT
- 2 PIONEER SQUARE
- 3 STADIUMS

## PIONEER SQUARE

- 1 ALASKAN WAY
- 2 WATERFRONT PROMENADE
- 3 WASHINGTON ST. BOAT LANDING
- 4 S. KING ST.
- 5 S. MAIN ST.
- 6 S. WASHINGTON ST.
- 7 HABITAT INTERTIDAL ZONE

## TRANSIT HUB

- 1 ALASKAN WAY
- 2 WATERFRONT PROMENADE
- 3 COLUMBIA ST.
- 4 MARION ST. PEDESTRIAN BRIDGE
- 5 COLMAN DOCK TERMINAL REPLACEMENT
- 6 YESLER WAY

## HISTORIC PIERS

- 1 ALASKAN WAY
- 2 WATERFRONT PROMENADE
- 3 SENECA ST.

## CENTRAL PUBLIC SPACE

- 1 ELLIOTT WAY
- 2 WATERFRONT PROMENADE
- 3 UNION ST.
- 4 WATERFRONT PARK REBUILD
- 5 OCEAN PAVILION
- 6 PIERS 62/63 PHASE 1 REBUILD
- 7 OVERLOOK WALK
- 8 PIKE/PINE STS.

## BELLTOWN

- 1 ELLIOTT WAY
- 2 LENORA ST. PED BRIDGE RETROFIT
- 3 BELL ST.
- 4 PORTAL PARK



# NEAR-TERM CONSTRUCTION CONTRACTING OPPORTUNITIES



- 13.8 kV Network Relocation Project
  - \$4M estimate
  - Anticipated advertisement date: Q4 2017
  - Anticipated construction start: Q1 2018
- Building Demolition Project
  - \$100K estimate
  - Anticipated advertisement date: Q2 2018
  - Anticipated construction start: mid-2018

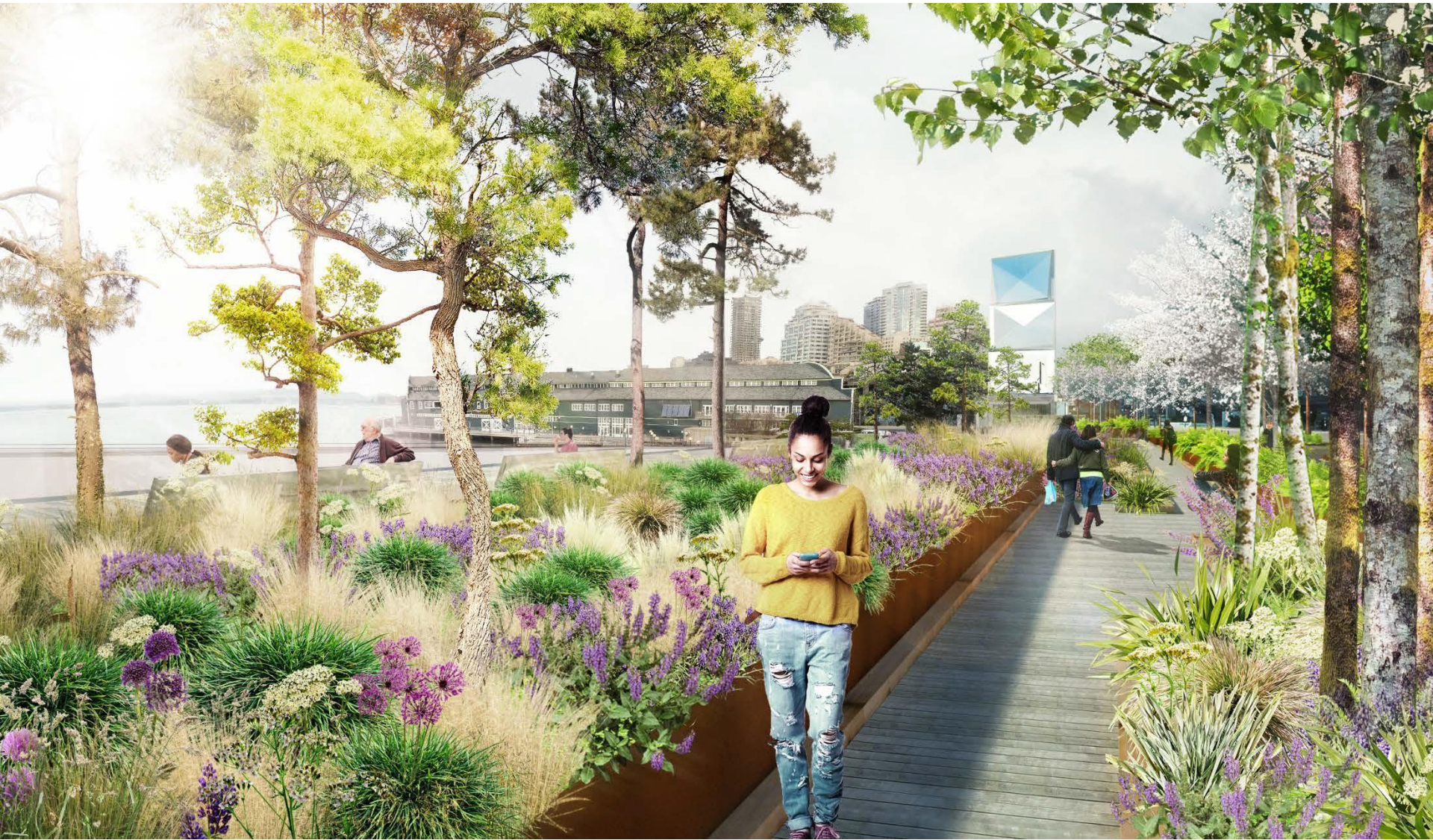


# MAIN CORRIDOR



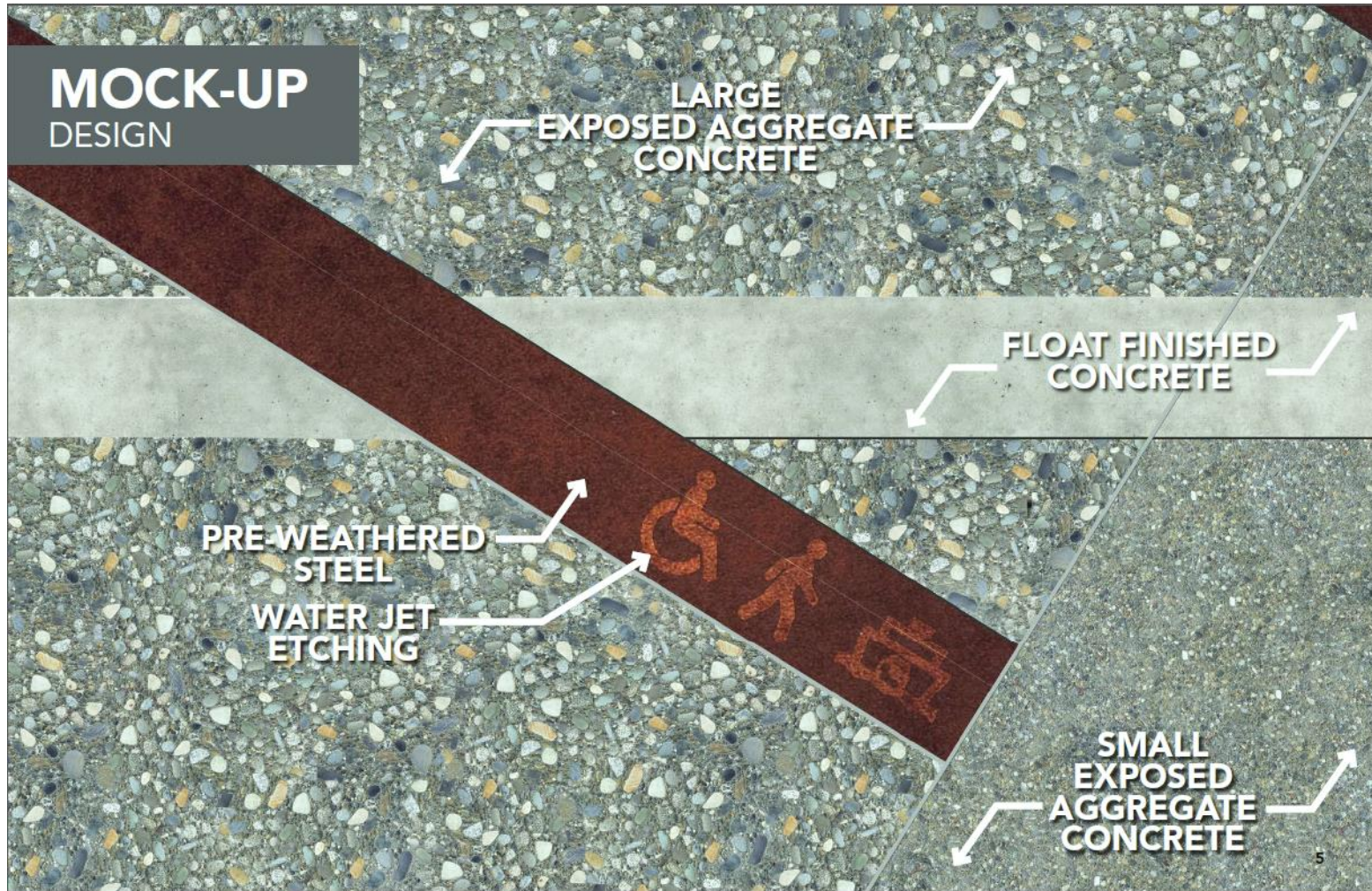


# PROMENADE



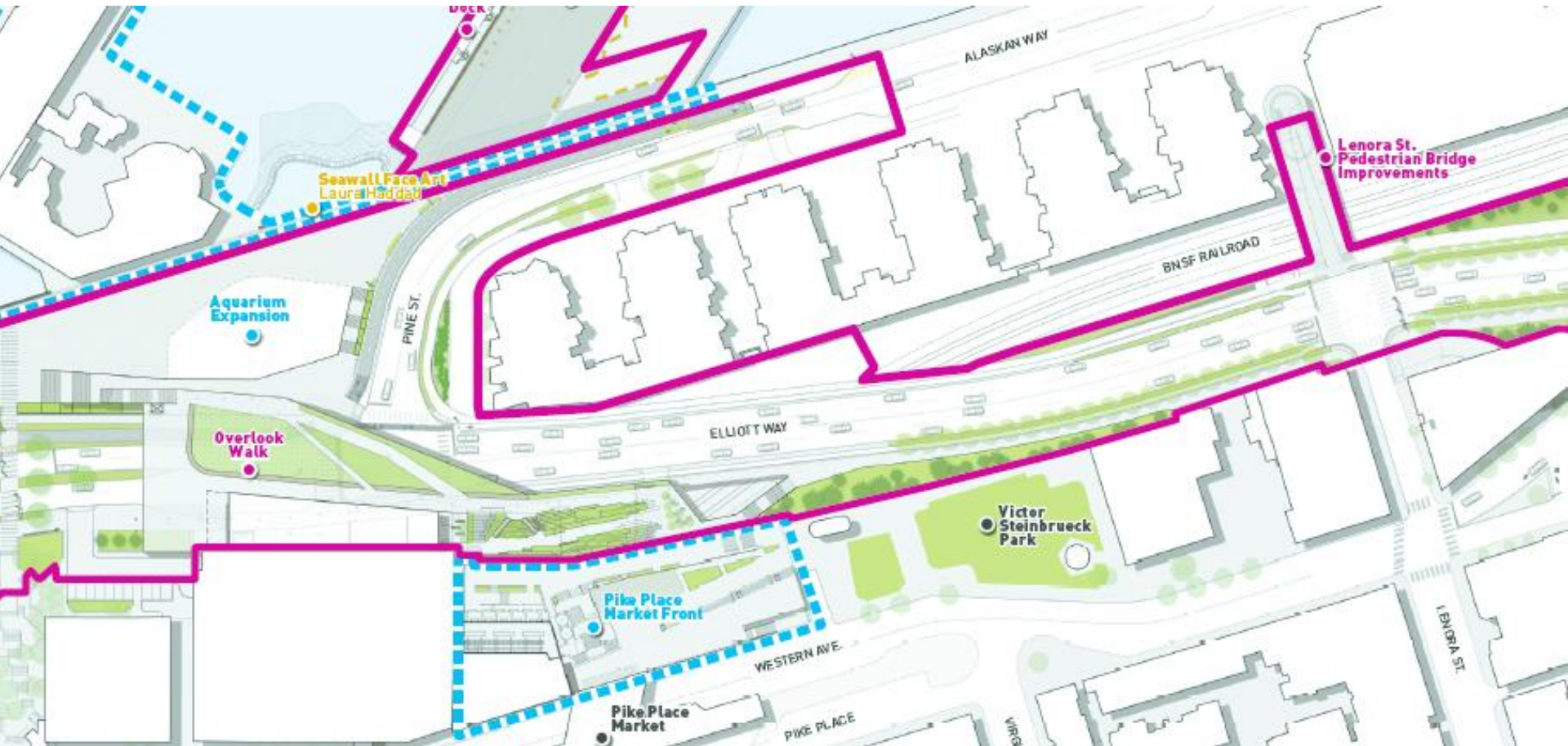


# DECORATIVE PAVEMENT





# BRIDGE WORK





# OVERLOOK WALK





# EAST-WEST CONNECTIONS





# WATERFRONT PARK





# CONSTRUCTION SCHEDULE



	2017	2018	2019	2020	2021	2022	2023
<b>WSDOT PROJECTS</b>							
Bored Tunnel			◆ Tunnel open to traffic, early 2019				
Alaskan Way Viaduct Demolition							
Battery St Tunnel decommission							
South Access							
Colman Dock							
<b>WATERFRONT SEATTLE PROJECTS</b>							
Pier 62 Rebuild & Habitat Imp.							
Early Works							
Alaskan Way & Elliott Way					◆ New Alaskan & Elliott Way open to traffic, July		
Promenade							
East/West Connections							
Overlook Walk							
Waterfront Park							
Marion Street Bridge*							
<b>OTHER CONSTRUCTION PROJECTS</b>							
Center City Connector							
WA State Convention Center							
Lander St Overpass							
Aquarium Expansion							

## NOTES:

- 1) Early Works may include: Columbia St drainage & areaway work, SCL vaults & duct banks, telecom work, building demolition, etc.
  - 2) Alaskan Way & Elliott Way includes: connections to Columbia St, Seneca St, Pine St, and Lenora St; Overlook Walk Foundations; Marion St Bridge Foundations; and Kiosk Foundations.
  - 3) East/West Connections include: Bell St, Union St Pedestrian Connection, Main and Washington Street Improvements, Pike and Pine Streetscape Improvements
  - 4) Construction dates subject to change pending: a) Tunnel & AWW Demolition completion dates and, b) Ongoing evaluation of sequencing and packaging assumptions for all projects.
- \*Whether WSDOT or City will construct the Marion Street Bridge project is still under deliberation.