

South Park Plaza

Seattle Design Commission February 4, 2020

Presenters

Seattle Parks & Recreation

Karen Kiest Landscape Architects

Tilghman Group, Transportation Planning

Jay Rood

Karen Kiest
Meredith Hall

Ross Tilghman

Project

- This is one of 14 landbanked sites acquired to provide additional access to open space in identified gaps throughout the city.
- The design will serve as an urban plaza, connection to King County improvements and will reference the South Park Green Space Vision Plan.
- As this fund is for open space, there is a 15% max. Limit on impervious surfaces within the property lines with the exception of pathways and surfaces, under canopy of trees.

Program

- There is no fixed program; program is being developed through site opportunities and constraints, and community input



Seattle
Parks & Recreation



For decades, the community has dreamed of a river walk and increased open space to increase livability and overcome historic inequities.

Community Vision



Outside Citywide South Park
Neighborhood Profile, OPCD, 2019

Site



Options shared Spring, Summer



Spine



Oval



Oxbow



Round

Design Commission Input (9/4/20)

Safety and Site Circulation

- Coordinate with King County to develop a design concept that will improve safety at the intersection of Dallas Ave S and 14th Ave S (South Park Bridge)
- Coordinate with King County on the design of S Orr St; reconsider the design for and allocation of street parking along S Orr St to better facilitate pedestrian connectivity
- Think about circulation and hierarchy of pedestrian movement to and within the park.

Future

- Coordinate with King County on how to develop the King County surplus site and to ensure the future use fits within the community's vision.
- Consider opportunities for outdoor covered areas and/or community facility through project phasing. Consider allocating space in the design concept for the future development of covered areas and/or community facility

Activation and Programming

- Take advantage of street space surrounding the park for activation and programming
- Continue to build partnerships with the local business and residential community for ongoing activation and programming; better understand how proposed community activation and programming concepts can be implemented.

Sustainability and Resiliency

- Study the effect sea level rise and flood conditions will have on the park

Community themes and feedback

- Provide a learning garden to create play and environmental education
- Continue to understand how The Plaza can serve as an active space for learning and experience

Safety

Study Area of
1,000-foot
radius

Site

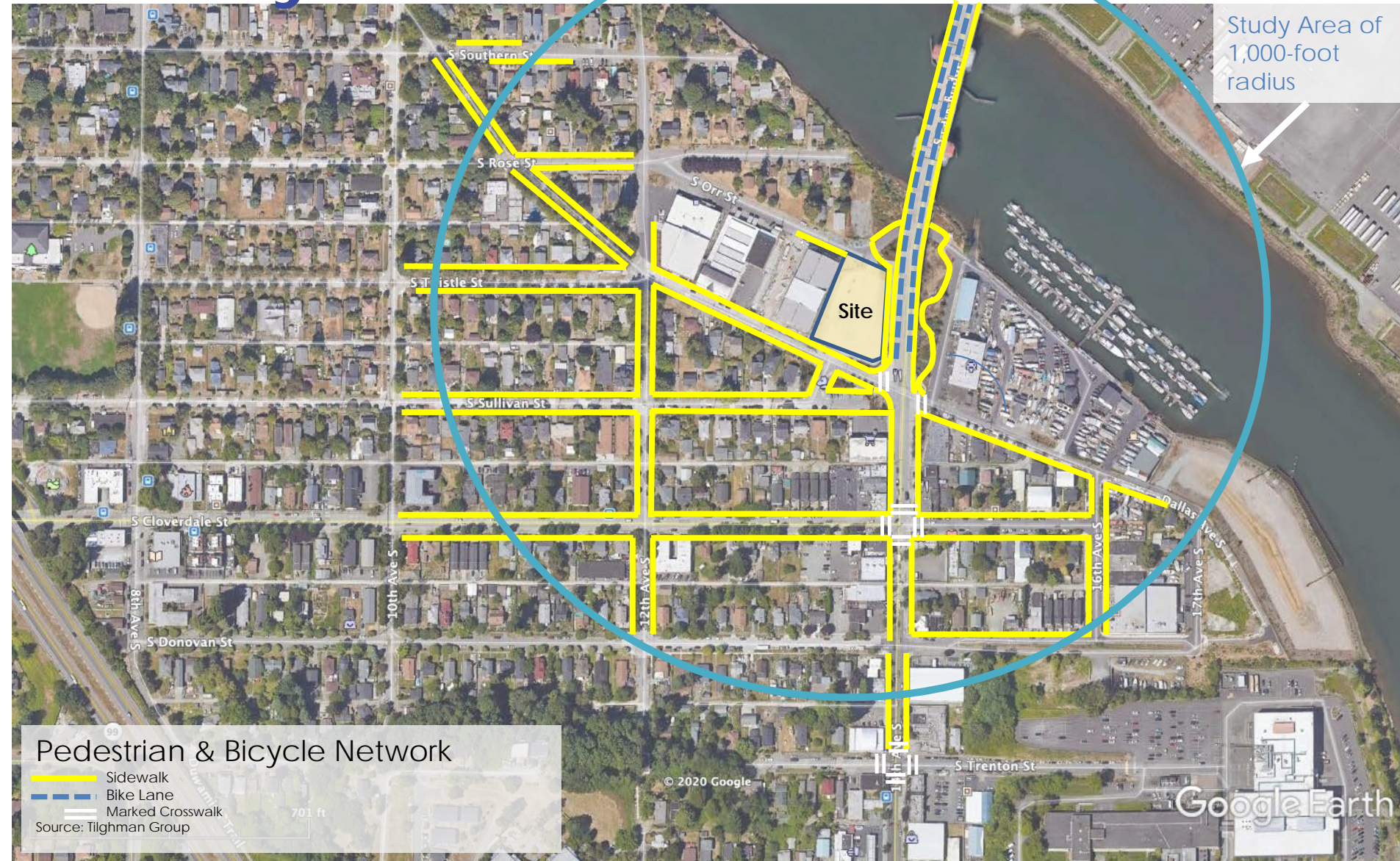
Pedestrian & Bicycle Network

- Sidewalk
 - Bike Lane
 - Marked Crosswalk
- Source: Tilghman Group

701 ft

© 2020 Google

Google Earth



Dallas Ave. S.

Urban Village Neighborhood Access Street

- 28 – 34 feet wide
- 2 lanes + parking

Very busy for its classification

- 1,975 daily vehicles
- High volume of trucks (34%)

Speeding a concern

- 25 mph limit, but 12% of vehicles exceed 30 mph

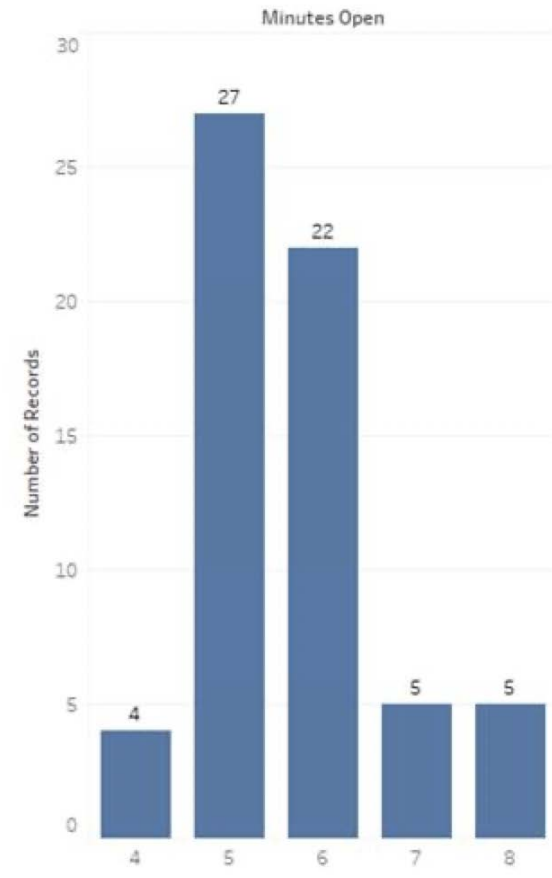


Bridge Operations

- 1 to 7 openings per day
- 60% on weekdays, 40% on weekends
- Avg. duration is 5.7 minutes, varying from 4 to 8 minutes
- One-third occur between 11:00 a.m. and 2:00 p.m.

Following an opening, traffic backs up from Cloverdale to the bridge's mid-span, blocking Dallas Ave. Clears within 3 to 5 minutes.

South Park Bridge in September



Potential Improvements

Comprehensive approach to improve pedestrian safety and comfort along Dallas.

Coordinating with SDOT and King County to:

- Reduce traffic volume, especially trucks
- Reduce speeding
- Investigate reducing curb radius at Dallas/14th
- Investigate creating pedestrian crossing of 14th
- Integrate with new Neighborhood Greenway on Sullivan

South Park Home Zone Proposal (SDOT)

KEY

Phase 2 Neighborhood Greenway with Stay Healthy Street

Phase 3 Neighborhood Greenway with Stay Healthy Street

Overpass and 8th Ave S Trail Connection Improvements

Pedestrian Improvements

South Park-Georgetown Trail Improvements

Rapid Flashing Beacon Crosswalk

Crosswalk Upgrade

14th Ave S & S Dallas St - Evaluate for Crossing Signal

Stairway Improvements

Speed humps: Two speed humps will be added for east-west blocks and one speed hump will be added for north-south blocks.

Plant new trees

Home Zone Boundaries

Phase 1 Neighborhood Greenway with Stay Healthy Street





Sustainability & Resiliency

2100 Flooding: 2' of Sea Level Rise & Extreme Tide

Duwamish
Waterway
Park

Seattle City Limits

12th &
Elmgrove
Open Space

Seattle City Limits

South Elmgrove St

South Southern St
South Park
Neighborhood
Center

Dallas Ave South

10th Ave South

South Rose St

South Orr St

South Park
Bridge
Raingardens

Duwamish Waterway

South Thistle St

Plaza

14th Ave South

12th Ave South

South Sullivan St

South Cloverdale St

T-117 Port of
Seattle
Habitat and
Park

N

CALEDONIA AV.

Seattle City Limits

Dallas edge of the Oxbow

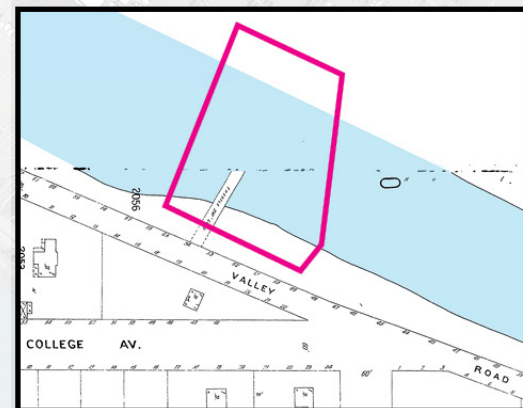
(1905 Sanborn Map)

Duwamish place name:

Lwalb

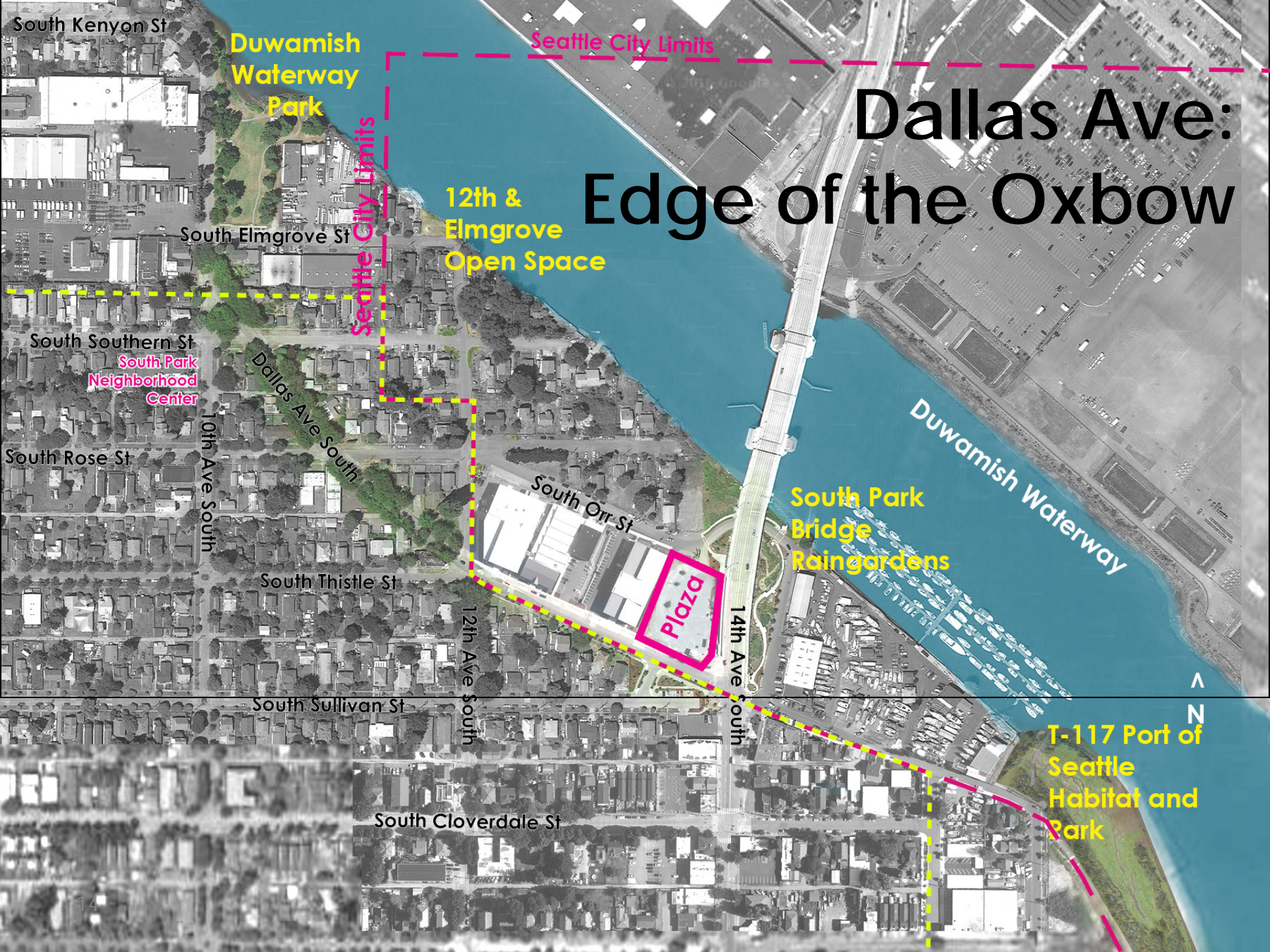
"abandoned" {leGelb} for a small channel across a flat on the west side of the new river. It is an old river channel where the river has changed its

course



Duwamish Waters





Dallas Ave: Edge of the Oxbow

Duwamish
Waterway
Park

Seattle City Limits

12th &
Elmgrove
Open Space

Seattle City Limits

South Elmgrove St

South Southern St
South Park
Neighborhood
Center

Dallas Ave South

10th Ave South

South Rose St

South Orr St

South Park
Bridge
Raingardens

Duwamish Waterway

South Thistle St

12th Ave South

14th Ave South

Plaza

South Sullivan St

South Cloverdale St

T-117 Port of
Seattle
Habitat and
Park

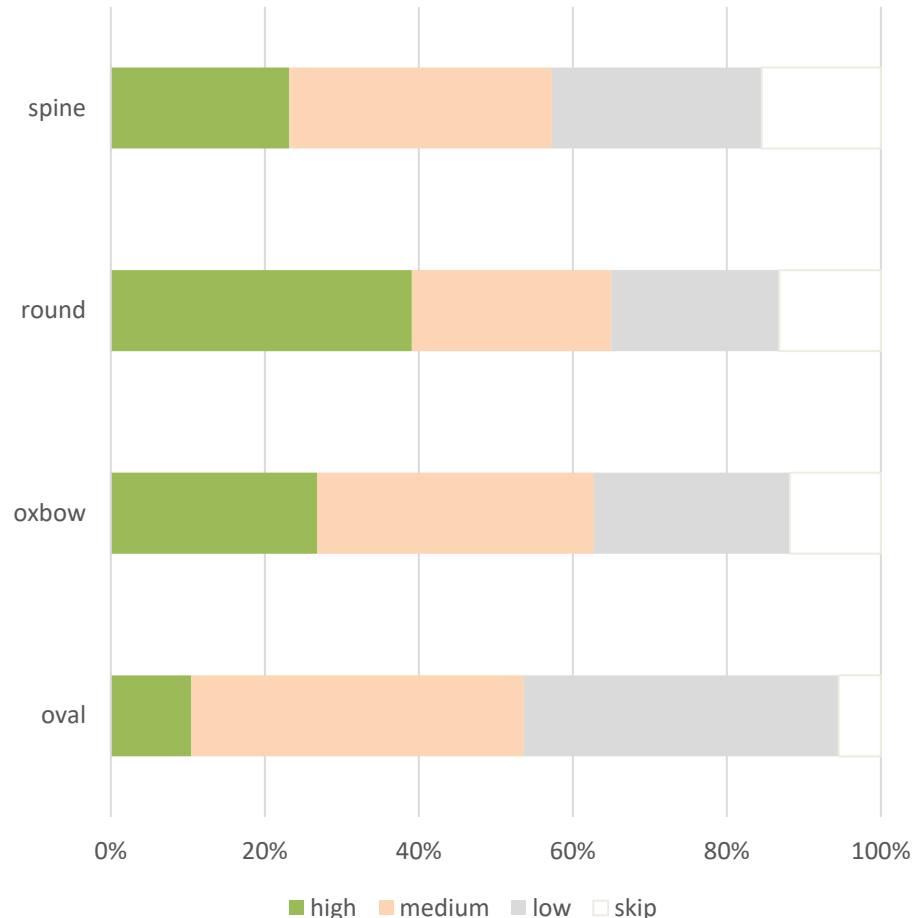
N

Community Input

August - October 2020 Online Survey

- 220 responses

This plaza park design best fits South Park.



Ongoing Site Activation

- SPR has assisted the community in hosting activation events at the site

Options outreach through October 2020

- Boards at Plaza
- Postcards
- Meeting with youth of Duwamish Valley Sustainability Group,
- Meeting with Port of Seattle
- Spanish radio PSAs
- Online Survey (Spanish, Vietnamese, English)

South Park Plaza Project



We want your input!

Project Goal:

Seattle Parks and Recreation purchased this site to provide open space for the South Park community. Now we need your input on park elements and future use so together we can develop a successful park that serves the South Park neighborhood. With your input we will develop a design for your new park.

Project Schedule

- Planning: 2018 - 2020 Design: 2020 - 2021
- Construction: 2021 - 2022

Please tell us what you think of the four design options!

Text or email your comments to: Ed Potthast 206-765-4292 Text: Ed.Potthast@seattle.gov

Or fill out the online survey at:

<http://www.seattle.gov/parks/about-us/current-projects/south-park-plaza-landbanked-site-park-development>

Thank you for participating!



Proyecto South Park Plaza



¡queremos conocer su opinión!

Objetivo del proyecto:

Seattle Parks and Recreation compró este sitio para proporcionar un espacio abierto para la comunidad de South Park. Ahora necesitamos su opinión sobre los elementos del parque y sobre el uso futuro para que juntos podamos desarrollar un parque exitoso que sirva para el vecindario de South Park. Con su aporte desarrollaremos el diseño de su nuevo parque.

Cronograma del proyecto

- Planificación: 2018-2020 Diseño: 2020-2021
- Construcción: 2021-2022

¡Cuéntenos qué le parecen las cuatro opciones de diseño!

Envíe sus comentarios por mensaje de texto a Ed Potthast al 206-765-4292 o por correo electrónico a Ed.Potthast@seattle.gov.

O complete la encuesta en línea en:

<http://www.seattle.gov/parks/about-us/current-projects/south-park-plaza-landbanked-site-park-development>

¡Gracias por participar!



Dự Án Quảng Trường Công Viên Young (South Park Plaza Project)



Mong Nhận Được Ý Kiến Đóng Góp!

Mục Tiêu Dự Án:

Seattle Parks and Recreation đã mua lại khu đất này để mang lại không gian ngoài trời cho cộng đồng South Park. Giờ đây, chúng tôi rất cần ý kiến đóng góp của quý vị về các hạng mục của công viên và sử dụng site này để chúng ta có thể cùng nhau phát triển một công viên thành công, phục vụ cho người dân khu phố South Park. Nhờ ý kiến đóng góp của quý vị, chúng tôi sẽ lập thành một bản thiết kế cho công viên mới của quý vị.

Tiến Độ Dự Án

- Lập Kế Hoạch: 2018 - 2020 Thiết Kế: 2020 - 2021
- Thi Công: 2021 - 2022

Xin cho biết ý kiến của quý vị về bốn phương án thiết kế!

Gửi ý kiến của quý vị qua tin nhắn hoặc email với: Ed Potthast 206-765-4292 văn bản Ed.Potthast@seattle.gov

Hoặc điền khảo sát trực tuyến tại:

<http://www.seattle.gov/parks/about-us/current-projects/south-park-plaza-landbanked-site-park-development>

Xin cảm ơn sự tham gia của quý vị!



Community Input Themes

From Aug-Oct 2020 survey

EVENTS & VENDING

- parking for food trucks, maintaining the pupusa vendor
- programming enough events to activate space
- Power for events, prep space

PLANTING

- Trees for buffer and air quality
- Native plantings for habitat, connection to river

CULTURAL ELEMENTS

- Sculpture/Murals – community artists, involving local kids
- Gazebo
- Gathering spaces for cooking and eating
- Partner with organizations for programming
- Native naming
- Telling story of:
 - Indigenous history, Duwamish and Salish culture
 - Latinx community; multi-cultural community
 - Farming and industrial history



Options shared Spring, Summer



Spine

- Like the focal point/Gazebo preferred
- Good for markets
- Elements not as well integrated
- Less flexible
- Missing a stage space

Oval

- Like flexibility
- Too much grass
- Needs more programming
- Needs more trees
- Needs more vending space

Oxbow

- Like meanders
- Like tree buffers
- Connection to street good for market
- Like Amphitheater
- Like Play at Orr
- Like historical reference

Round

- Like stage location for performance & having back to warehouse
- Plenty of space for events, markets
- Love brick
- Move play to Orr
- Need programming for activation

Ongoing Input

through Design Development

- Better define events programming needs in partnership with community groups and Parks
 - South Park Merchants
 - Duwamish Valley Youth Corps
 - Duwamish Valley Cleanup Coalition
 - South Park Arts



- Participate in discussions of SDOT Home Zone improvements to mitigate traffic impacts
- Engage neighbors, community groups, and Duwamish Tribe to define art and materiality of Park

Oxbow and Round Meet



Oxbow

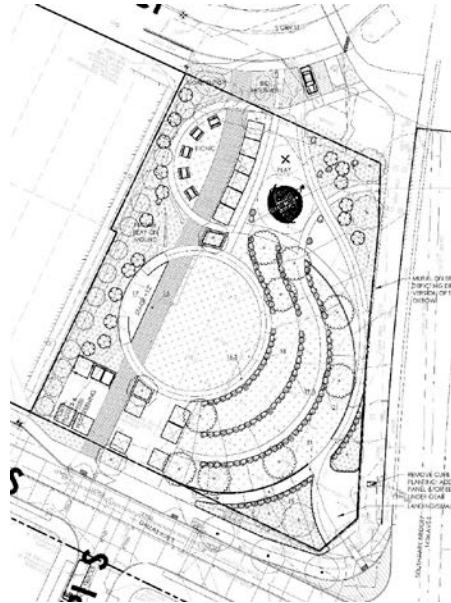


Round

Concept Development

Considerations:

- Dumpster and porta-potties
- Accessible Parking
- Minimize ROW Impacts
- Meet 15% impervious
- On-Site Stormwater



Oxbow and Round Meet



0' 30' 60' N

Oxbow and Round Meet



- 1 Accessible Parking
- 2 Expand Overlook
- 3 Connector Loop
- 4 Entry Plaza with Brick Road, Bikes, Sign, Porta potty, Dumpster
- 5 Space for Stage
- 6 Amphitheater Seats
- 7 Iconic Play Structure
- 8 Picnic Area
- 9 On-site (and offsite) Stormwater Management

KC Conservation Fund Analysis

Impervious surface:

Plaza+Stage+Brick Road+
facilities
4,440 sf

Play Area
+ 953 sf

Total =
5,334 sf

(14.8% of 36,020 sf site)

*Paths, seatwalls, and pads
for tables and seating not
included.*



0' 25' 50' N

Oxbow and Round Meet



View from North



Events





View into park from corner



Amphitheater

Views





Looking north to Play Area



Looking south to Picnic and Play



Views



Sustainability & Resiliency



Raised landscape



Durable materials



Visible stormwater



Native plants

Sea-level-rise interpretation



trees

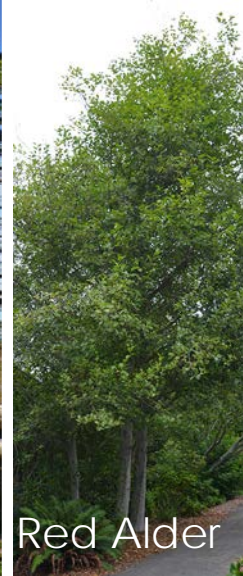
Planting



Cascara



Shore Pines



Red Alder



Madrona



Maple



W. Red Cedar



Vine Maple

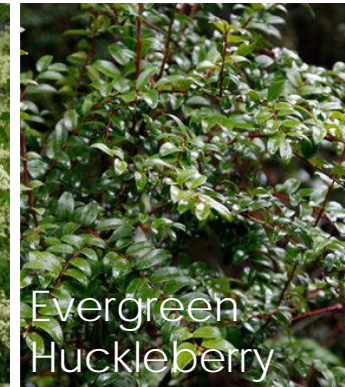
shrubs



Thimbleberry



Oceanspray

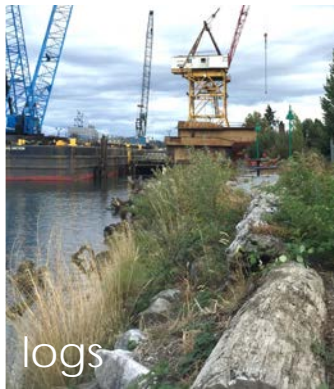


Evergreen Huckleberry

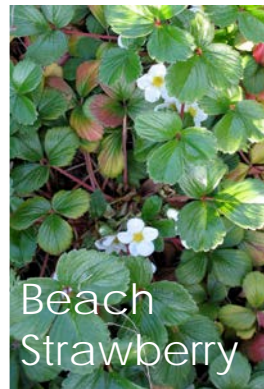


Oregon Grape

shore



logs



Beach Strawberry



Snowberry



Salal



American Dunegrass



Nootka Rose

Discussion

