

South Park Plaza



Seattle Design Commission

September 3, 2020

Presenters

Seattle Parks & Recreation
Karen Kiest Landscape Architects

Ed Pottharst
Karen Kiest
Meredith Hall

Presentation Outline

Project Introduction

- Purpose
- Program

South Park

- Urban Design Context

Site

- Views
- History

Community

- Demographics
- Input
- Design Themes

Options

- Oxbow
- Circle
- Oval
- Oxbow

Next Steps

Questions & Comments



Purpose

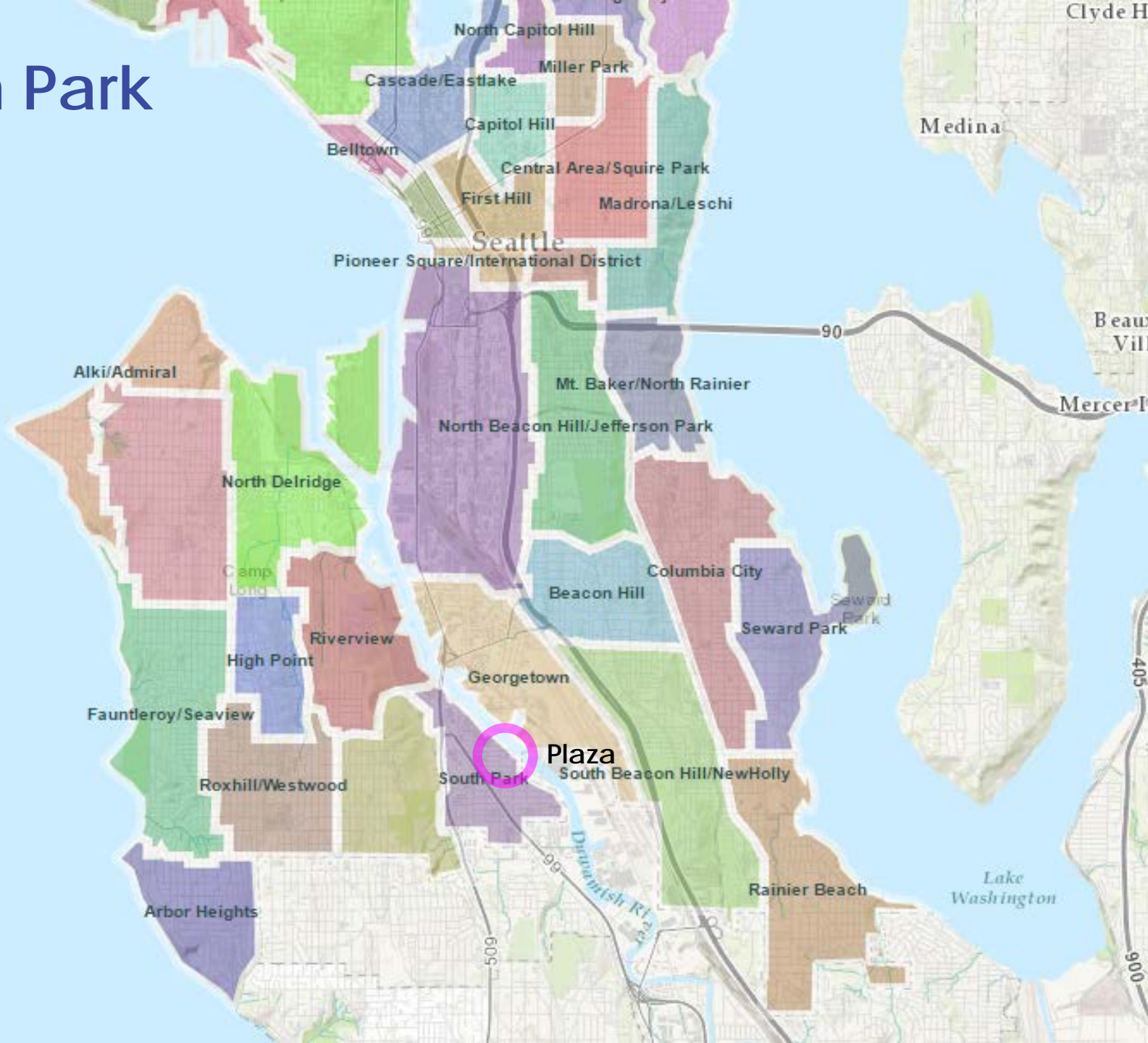
- This is one of 14 landbanked sites acquired to provide additional access to open space in identified gaps throughout the city.
- The design will serve as an urban plaza, connection to King County improvements and will reference the South Park Green Space Vision Plan.
- As this fund is for open space, there is a 15% max. Limit on impervious surfaces within the property lines with the exception of pathways and surfaces, under canopy of trees.

Program

- There is no fixed program; program is being developed through site opportunities and constraints, and community input



South Park



South Park neighborhood



GEORGETOWN

FIRST AVE BRIDGE

DUWAMISH RIVER TRAIL

DUWAMISH WATERWAY

EAST MARGINAL WAY S

8TH AVE S

AIRPORT WAY S

S RIVERSIDE DR

7TH AVE S

BEACON HILL

SR 509

Plaza

SOUTH PARK BRIDGE

KING COUNTY AIRFIELD & BOEING

15

HIGHLAND PARK

SR 99 WEST MARGINAL WAY S

10TH AVE S

12TH AVE S

DALLAS AVES

S CLOVERDALE ST

14TH AVE S

OLSON PL SW

MYERS WAY S

0 1000' 2000'



Community Vision

South Park Green Spaces Vision Plan
(Seattle Parks Foundation, 2013)



For decades, the community has dreamed of a river walk and increased open space to increase livability and overcome historic inequities.

Community Vision



T-117 - 2015 (streets) & 2021 (habitat)



Georgetown-South Park Connection - tbd (SDOT)



South Park Bridge 2014



River walk mural 2019



8th & Riverside Open Space 2013



7th Ave Pump Station 2021

Outside Citywide South Park Neighborhood Profile, OPCD, 2019

Neighborhood Open Space: Duwamish Shoreline Improvements



7th Ave Pump Station

Gateway North Park

Duwamish Trail Bike Path

Riverside Street End & 8th Ave S Port Park

Duwamish Waterway

Duwamish Waterway Park

Seattle City Limits

12th & Elmgrove Open Space

Seattle City Limits

South Park Neighborhood Center

South Park Community Center

Cesar Chavez Park

Skate Park

South Orr St

Plaza

South Park Bridge Rain Gardens

T-117 Port of Seattle Habitat and Park



Nine Block Context



S Rose St

12th Ave S

S Orr Street

KC Surplus

South Park Bridge

Duwamish Waterway

KC Raingardens

City of Seattle King County

South Park Plaza

Dallas Ave S

13th Pl S

S Sullivan St

South Park Marina

Dallas Ave S

14th Ave S

12th Ave S

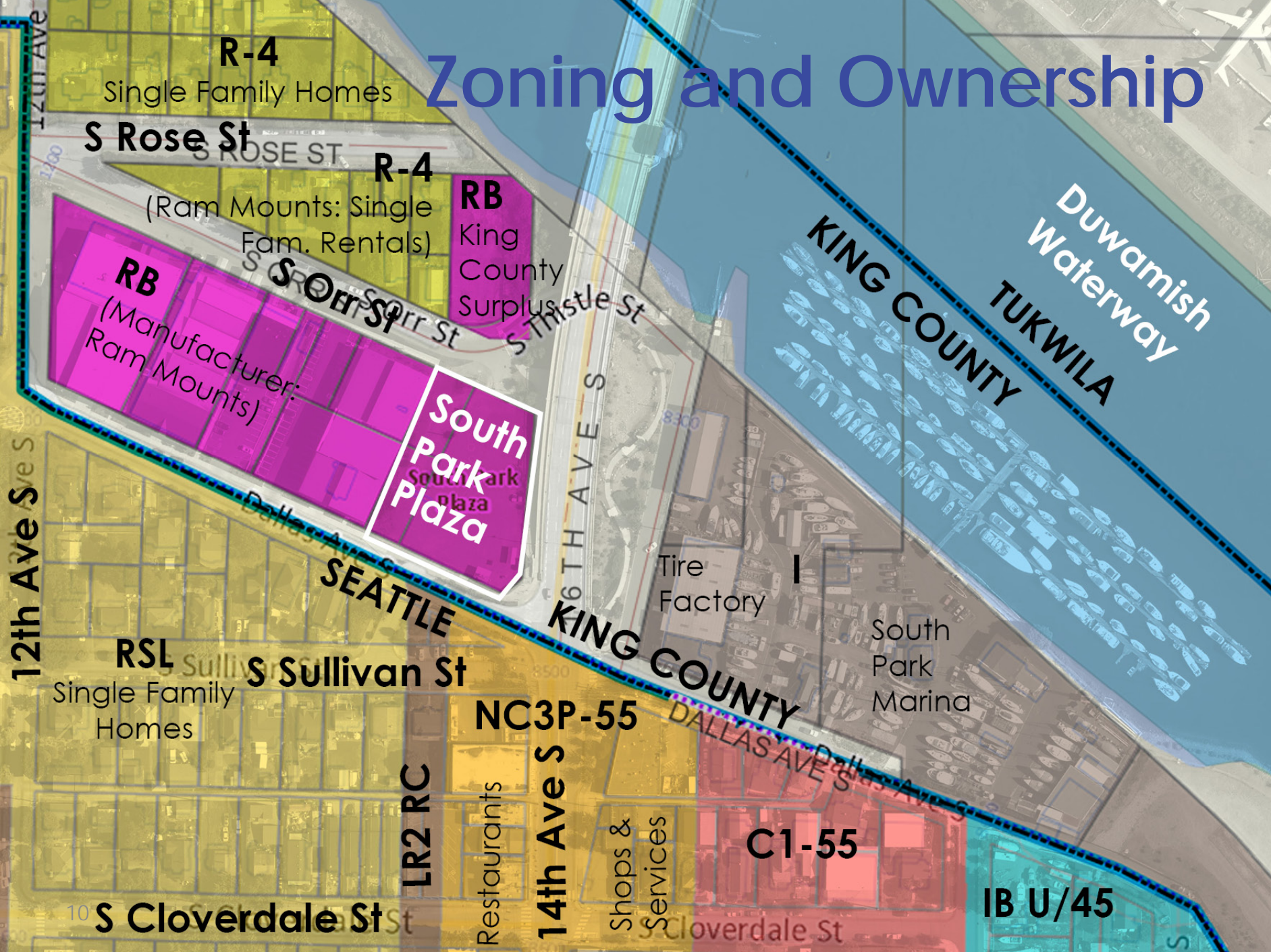
S Cloverdale St

S Cloverdale St

Ave S

Port of Seattle
T-117 Park
(Habitat
Restoration &
Park under
construction)

Zoning and Ownership



Site



Industrial activity
S Orr Street

blank wall

KC surplus property
potential riverwalk connections

missing sidewalk

habitat (no access)

habitat (no access)

Duwamish Waterway

rain gardens

South Park Marina

fence

fence

blank

traffic noise

Dallas Ave S
street is potential festival space

13th Pl S

S Sullivan St dead end

busy intersection commercial connections





Dallas Avenue S – looking east





Park – looking east



S Orr Street – looking south



S Orr Street - looking north off site

Early Site and Community



Duwamish place name:

Lwalb

“abandoned” {leGelb} for a small channel across a flat on the west side of the new river. It is an old river channel where the river has changed its course

Site and Community Evolution



Bridge no 3179, June 6, 1932



Japanese Farmers in South Park 1933



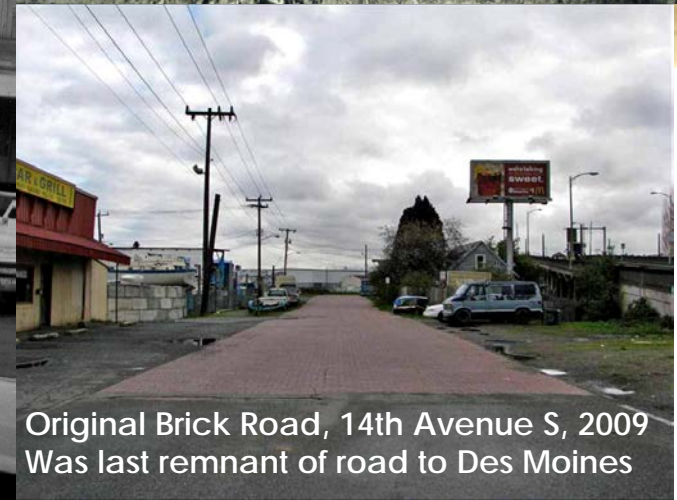
A.K.
11-28-58
F3654-B

EAST SOUTH PARK
32-24-4 B-15 L-1 TO 6
8458 DALLAS AVE.

5

②

County Line Tavern (formerly Burdick Feed Store), 1958



Original Brick Road, 14th Avenue S, 2009
Was last remnant of road to Des Moines

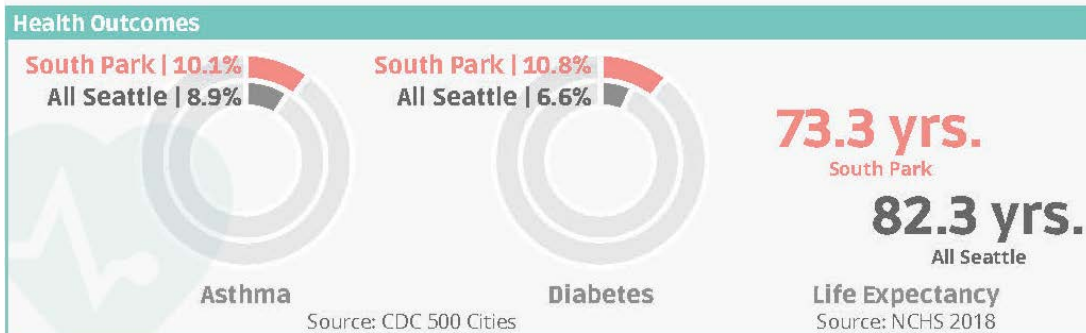
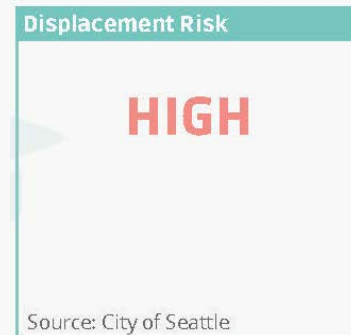
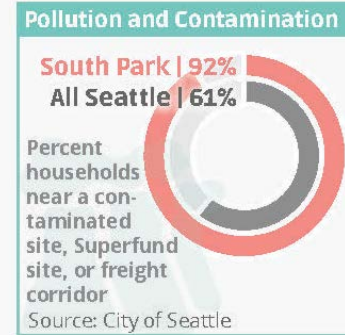
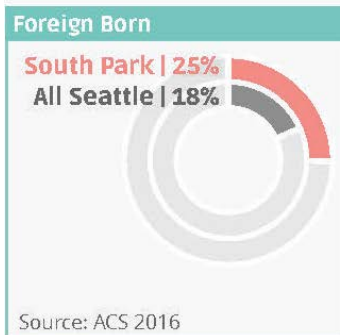
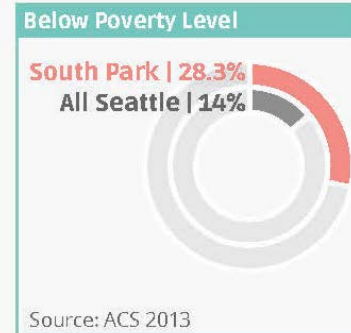
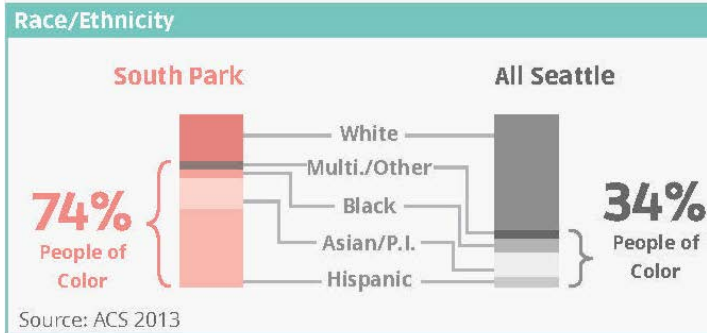
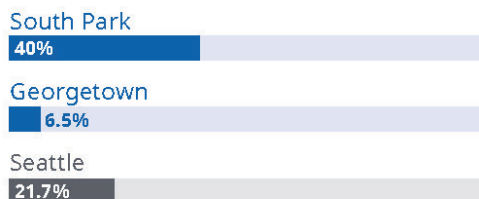
Community Today

South Park today is vibrant and diverse but bears an inequitable share of pollution from traffic and industry and many in the community are at high risk for displacement and poor health.

Data & Photo Sources: Outside Citywide & Duwamish Valley Action Plan



Speak Language Other Than English at Home



Community Input



Fall 2019 Duwamish Valley Youth Corps (DVYC)

- SPR staff supported DVYC members in preparing a presentation for their Environmental Justice Youth Forum



November 16 2019 Public Outreach Event

Including: OPCD/OSE (Duwamish Valley Program and Outside Citywide), Office of Housing

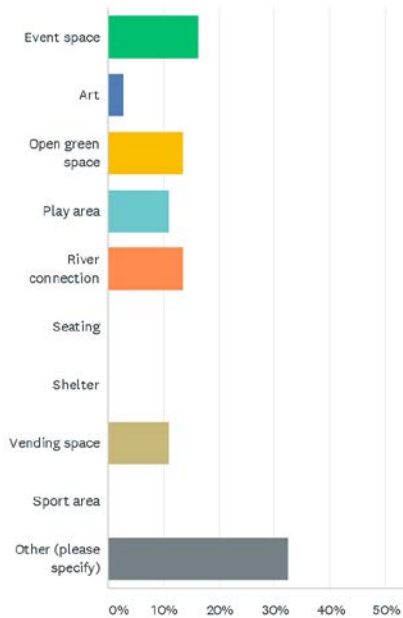
- Strong themes were daily activation that will keep the park safe, walking/running/biking loops (for kids within the park and connecting to the Riverwalk), play features, and river access.
- Children and adults drew 21 plans for the park, many featuring soccer, basketball, and other structured games; play equipment; and vending.

Nov 16th Presentation, South Park Plaza Team
Duwamish Valley Youth Corps (DVYC)

Community Input

January-February 2020 Online Survey

- 49 responses



Times have changed and open space is not valuable if it does not serve community which has lived here and is now being displaced.

I'd like to see more than just one thing in the plaza. Event Space, Art, Open Green Space, River Connection, and Vending Space

Green Space that has large native conifers for all season air quality, noise buffer. A connection to the River, and Native Duwamish Artwork by local Duwamish Artists.

Vendors and small businesses attract people at different times of day and really make urban plazas vibrant.

[I remember] The County Line restaurant, the red brick street, the houses that were near there that are now gone. The future park should tell that this is a NEIGHBORHOOD not an industrial /waste zone.."

That this is sacred land that the Duwamish ought to have access to for their canoe events.

Ongoing Site Activation

- SPR has assisted the community in hosting activation events at the site



2019 Lucha Libre

Nov 2018 Dia de los Muertos

August 2020 SPR Online Survey and Boards at Site

- Underway Now

Community Design Themes

event/flexible activity space

- Screening movies on warehouse building/outdoor movie theater/summer movie nights
- Outdoor music venue
- Covered & lit space
- Spaces for large families to gather/bring kids
- Meeting place for young people
- Multi-use space for events
 - Honk Fest
 - Lucha Libre



Spokane Riverfront



Lucha Libre event, South Park



View from former bridge at Bridge Wake, 2010

vending

- Utility connections for vendors
- Access for food trucks and vendors
- more vendors would bring activity and promotion to business district



Farmer's Market (South Park Market on Wheels, 2009)



Space for Taco Trucks & other mobile food

multi-cultural

- celebrate cultural events from all of the segments of the community
- Show the multicultural connections with a "center" or a "statue"
- Fountain as cultural feature



Plazuela 27 Septiembre, Los Mochis, Mexico



Mural, Duwamish Waterway Park



Old Town Gazebo, Albuquerque

play

- Multi-age play features
- Playground
- Zip line
- Skate park
- Play spaces
- Climbers on edge of plaza
- Mini soccer field & turf
- Games
 - Chess/checkers (large set or tables)
 - Ping pong



art

- On warehouse
- On bridge wall
- Sculptures kids can climb on
- Incorporate kid art (tile/mosaic)

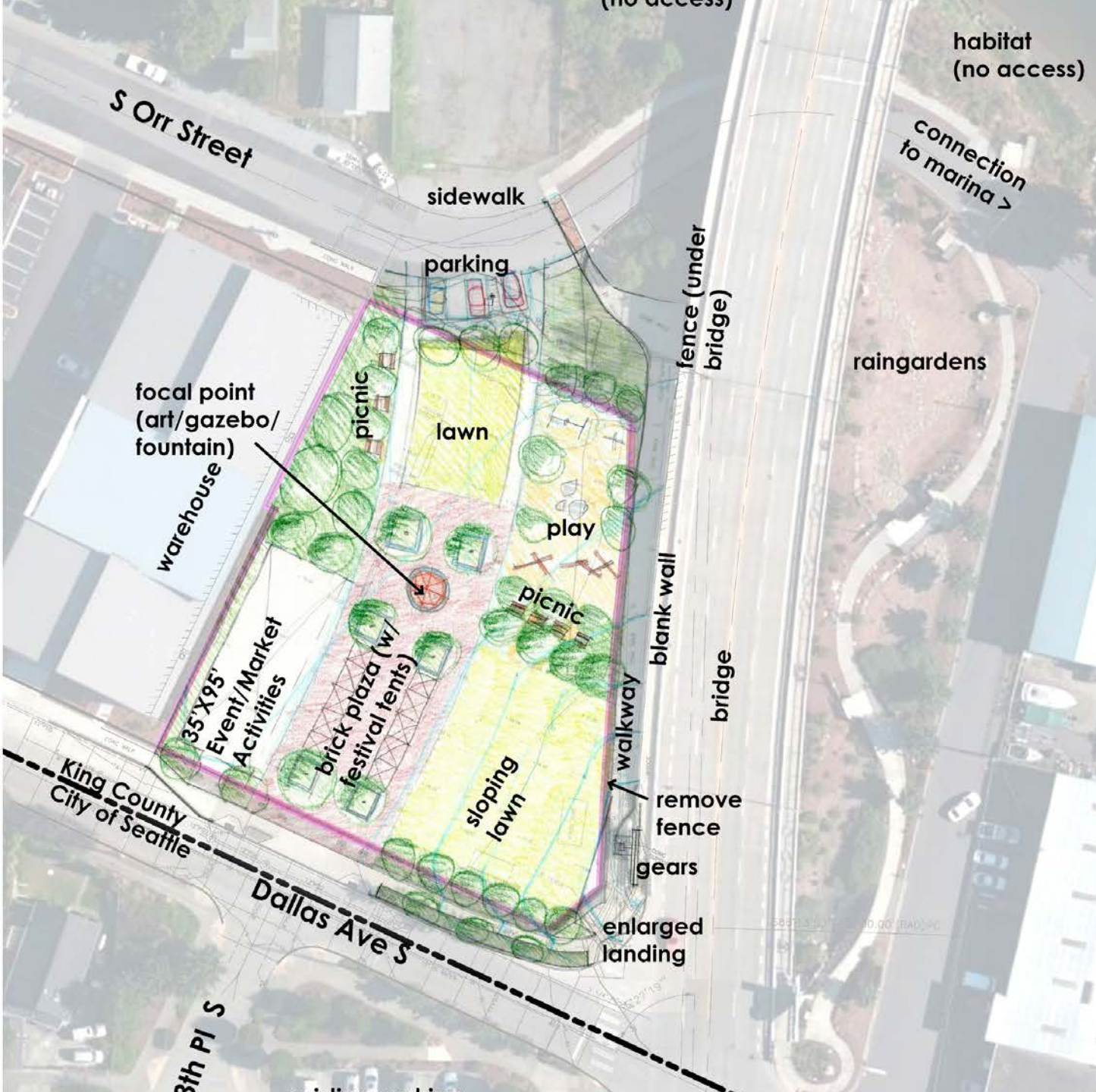


Mural painting on former South Park Bridge



Mural on the County Line Building after its closure, 2010

Spine



A formal brick plaza recalls historic road and orients movement through park and toward the river.

Spine

s
o
r
r
s
t

picnic

picnic seating within native planting (stormwater treatment)



vending

tents in plaza can spill to 13th



Farmer's Market (South Park Market on Wheels, 2009)

event/activity space

space for events, activities



Autumn Moon Festival

lawn

small lawn off Orr for informal play



focal point

central focal point (gazebo/fountain) in plaza



Old Town Plaza, Albuquerque, New Mexico

plaza

brick plaza (recalling historical road) w/formal planters aligned to 13th Place



Historic 14th Ave S Brick Road (photo from 2009 Historic Engineering Report)



Plaza Independencia, Quito, Ecuador

play

play area nestled at bridge



paths

maintain existing bridge walkway



lawn amphitheater

informal sloping lawn amphitheater



Spokane Riverfront

dallas ave s



Oval

A large lawn is a green community center with flexible space for large events, pick up sports, and informal gatherings.

paths

curving paths meets existing path along bridge



picnic

picnic seating



planting

native planting (potential to treat stormwater)



play

play area on Dallas



plaza

small plaza on Dallas allows for festivals to spill from park and incorporate 13th



Olvera Street, Los Angeles

steps

staircase with trees leading down to brick plaza



vending

food trucks in street



Space for Taco Trucks & other mobile food

lawn

large open lawn with small sloping edge to meet Dallas & 14th corner for events and pick-up sports



amphitheater



steeper lawn amphitheater

event/activity space

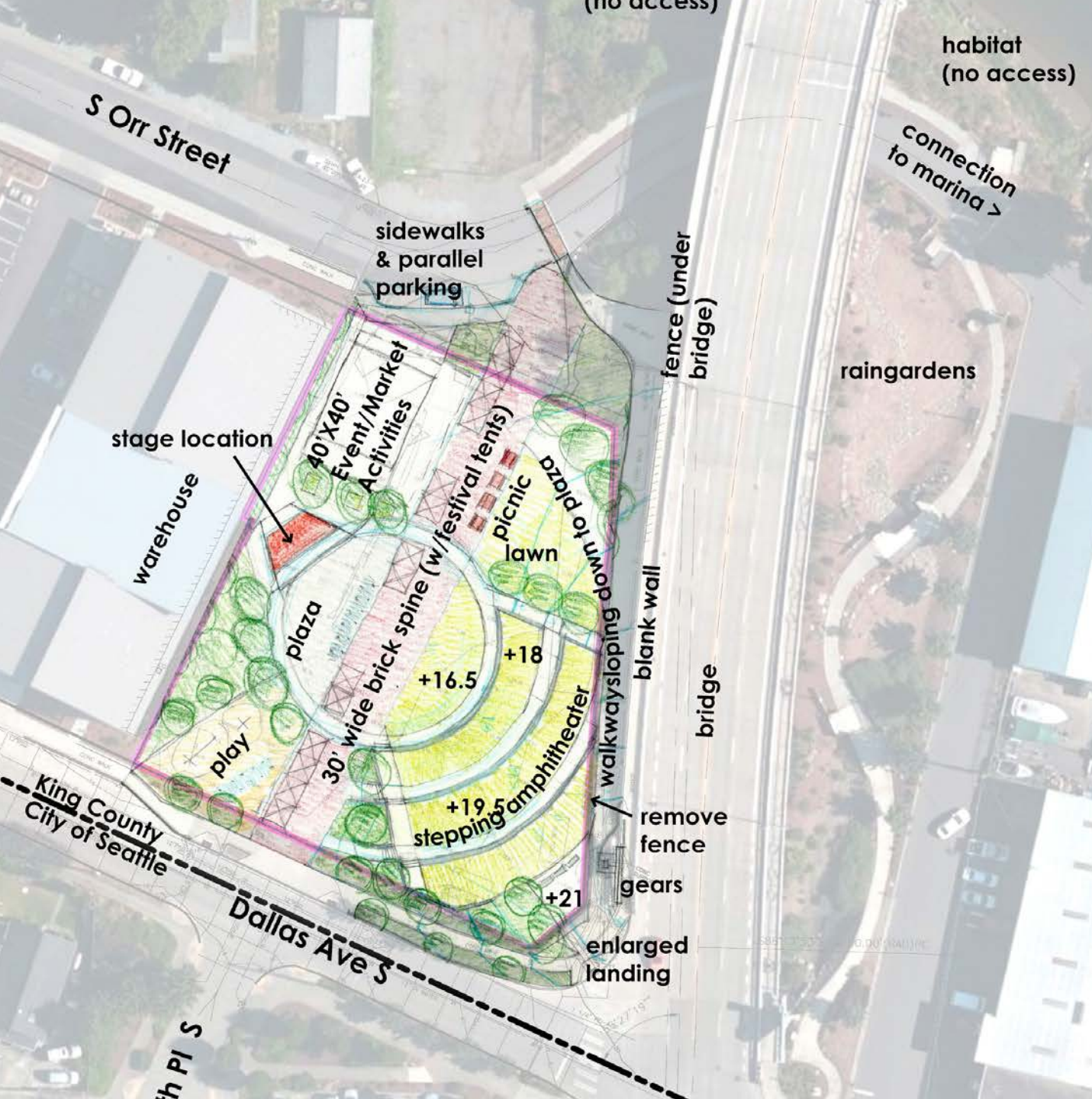
space for events, activities



FolkLife Festival

Oval

Round



A formal event space oriented toward a performance space and bisected by a wide brick walk for vending.

Round

s orr st
event/activity
space
space for events, activities



Day of the Dead, 2018

stage

location for stage at central plaza



Panhandle Bandshell (currently on site, deconstructed)

play

play area on Dallas



plaza

paved brick plaza stretches from Dallas to Orr to create spine for festivals



Historic 14th Ave S Brick Road (2009)

planting

planting areas are opportunity for treating stormwater



vending

oriented on brick 'road'



Olvera Street, Los Angeles

lawn

curving path peels off existing bridge walkway, framing small open lawn



paths

maintain existing bridge walkway



amphitheater

wide curving amphitheater - lawn with seatwalls - steps up to a bigger landing at 14th corner



Niles Town Plaza, Fremont, California

dallas ave s

Oxbow



A site sculpted to recall the old oxbow, with soft natural forms meeting architectural hardscapes for events and vending.

s orr st

play
small play area off Orr



lawn

central lawn is sunken to suggest the oxbow that once made up the space - plaza and building edges are elevated to feel like decks at water edge



Madison Valley Stormwater Facility

paths

curving paths meeting existing paths along bridge w/ planting areas (potential to treat stormwater)



Oxbow

vending

tents in plaza can spill to 13th



Farmer's Market (South Park Market on Wheels, 2009)



Historic river & oxbow

amphitheater

steep amphitheater seating in plaza meets upper corner at 14th



Wallingford Playfield/Hamilton M.S.

s event/activity space

space for events, activities



West Seattle Summer Fest

plaza

brick plaza on Dallas aligns with 13th for easy street closure for events



Olvera Street, Los Angeles

dallas ave

Next Steps



Spine

Oval

Round

Oxbow

Questions & Comments