

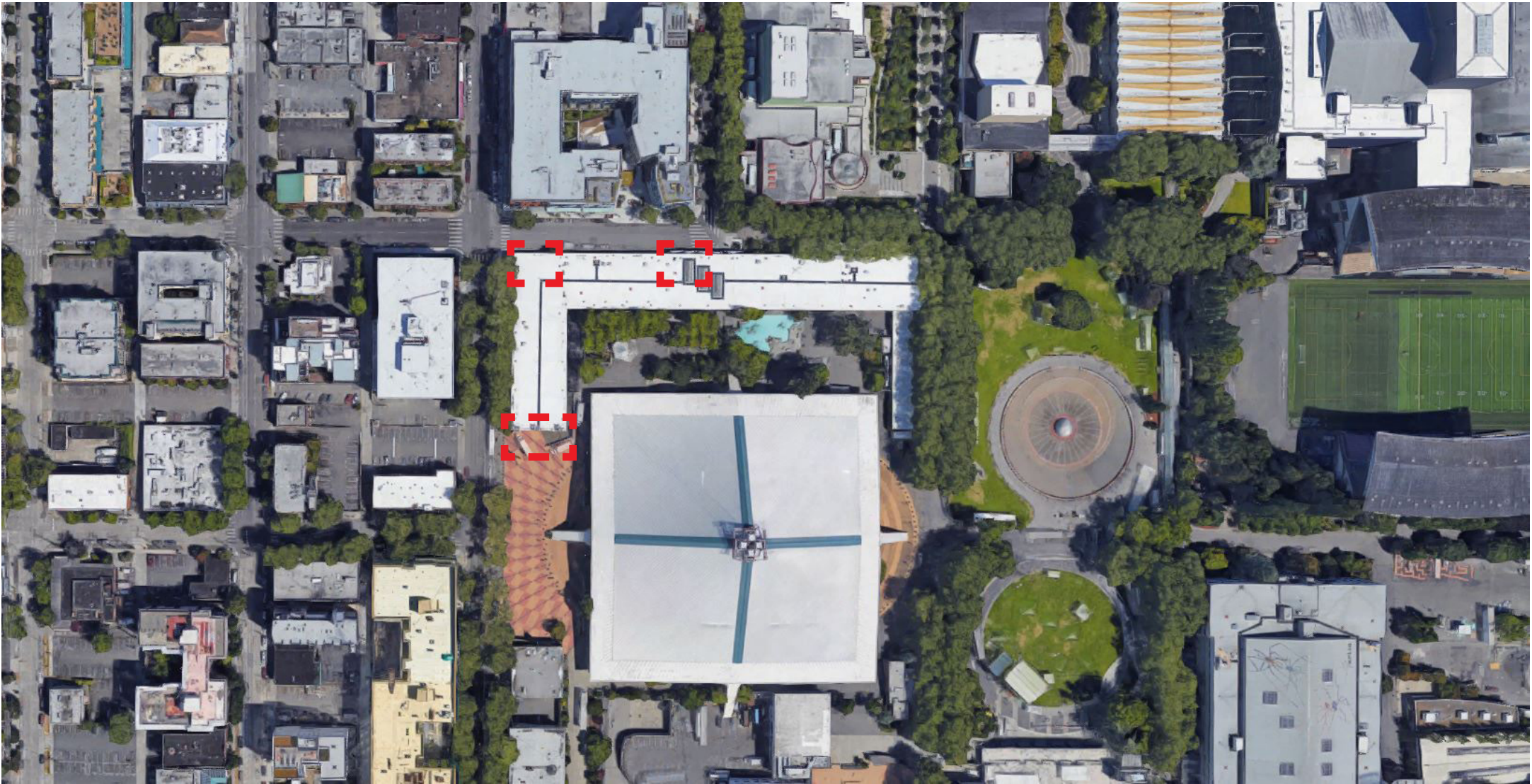


LANDMARKS PRESERVATION BOARD | CERTIFICATE OF APPROVAL PACKAGE | DECEMBER 1, 2020



CONTENTS

- SITE & FLOOR PLANS (p. 3-4)
- BUILDING ELEVATIONS (p. 5-6)
- EXISTING VIEWS & CONDITIONS (p. 7-8)
- PROPOSED CONDITIONS (p. 9)
- TICKER & DISPLAY COMPONENTS (p. 10-12)
- SECURITY CAMERA COMPONENTS (p. 13-14)
- EXTERIOR DOORS (p. 15)
- SOUTH ELEVATION (p. 16-18)
- WEST & SOUTH ELEVATION (p. 19-21)



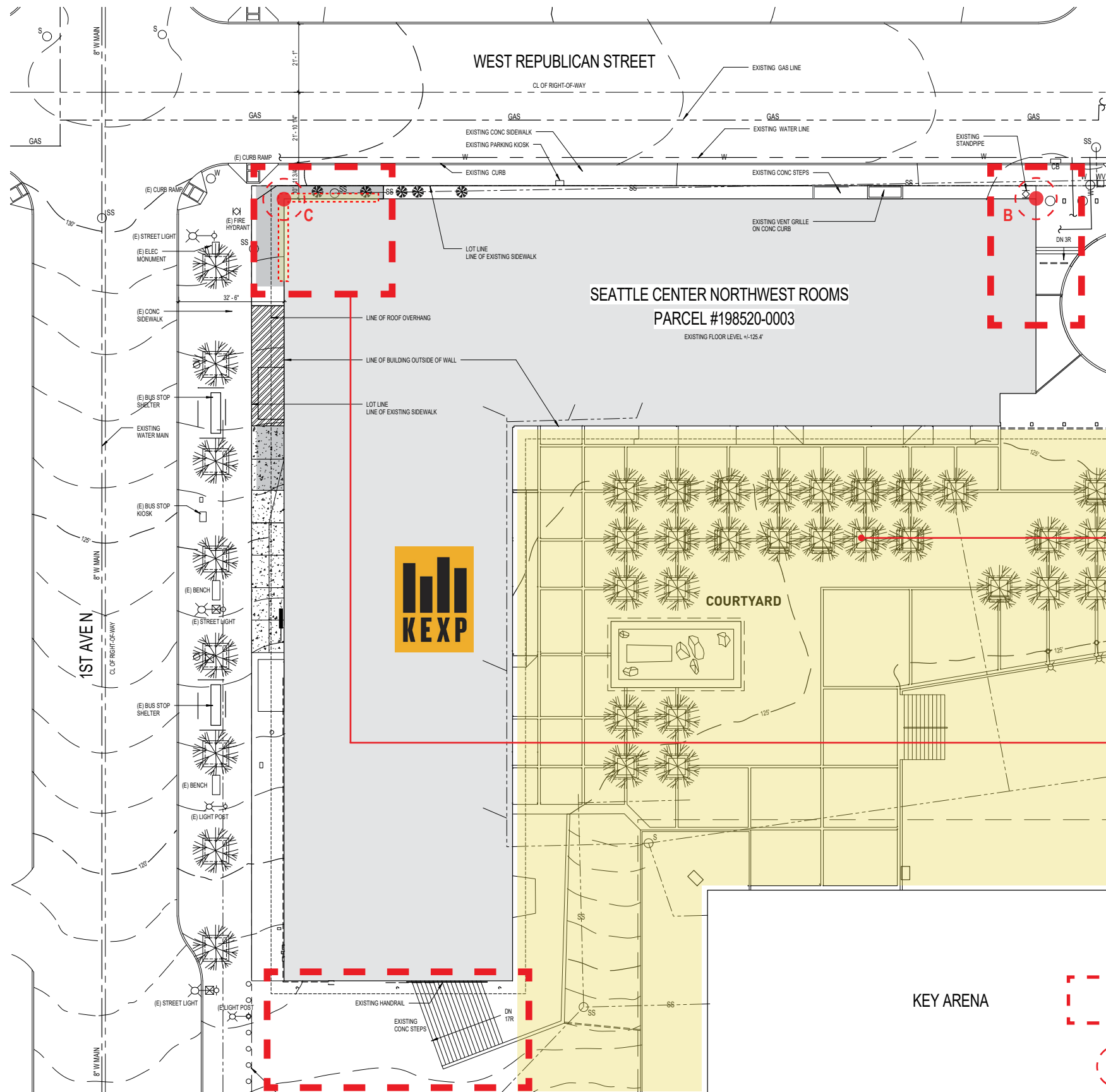
AERIAL MAP

SEATTLE CENTER

KEXP’s original Landmarks Preservation Board Certificate of Approval for modification to the Northwest Rooms at Seattle Center was approved January 15, 2014.

This package includes the installation of a new, LED illuminated changing image sign at the Northwest corner of the building which was deferred from the initial Landmarks review in 2014. Updates to the City of Seattle Sign Code in Spring 2019 established the Seattle Center Sign Overlay District, which now encompasses the entirety of the Seattle Center including the Arena Sub-Area, and Bressi Block Sub-Area. The Northwest Rooms building in which KEXP is located falls within the Arena Sub-Area (SMC 23.55 Part 4 & SMC 23.55.058).

This proposal also encompasses the relocation of existing building signage on the South facades as part of the expansion of the Northwest Rooms / Arena egress & mechanical spaces (per Landmarks Certificate of Approval package dated 5/1/2019), the placement of three additional security cameras on the North and West facades, and the replacement of a pair of exterior service doors at the breezeway (for band and equipment load in and out).



SITE PLAN - NTS



SITE PLAN



SDCI #3030457

Project:
KEXP @ Seattle Center NW Rooms

Address:
472 1st Ave N, Seattle, WA 98109

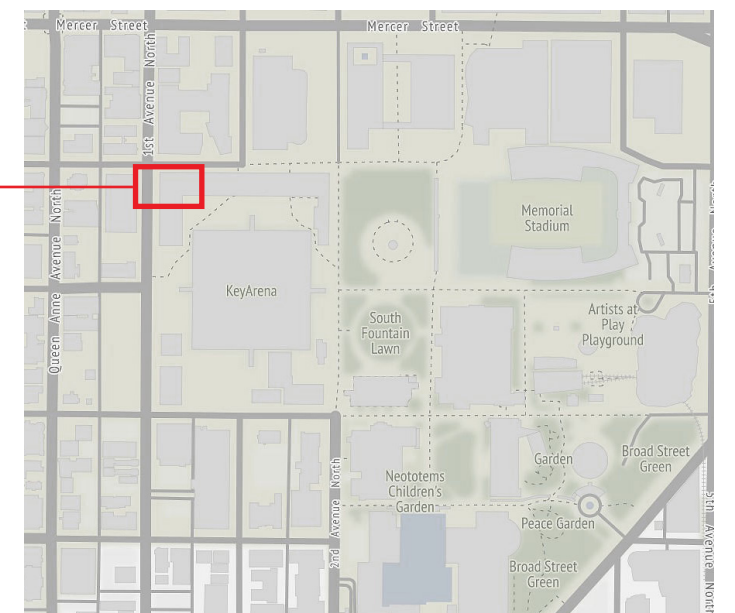
Owner:
City of Seattle

Legal Description:
BLOCK 31, PLAN OF NORTH SEATTLE, T DENNY'S
3RD ADD, TGW BLKS 32, 34, 35, 36, 42 TGW
BLOCKS 43, 44, & 53, D.T. DENNY'S HOME

Assessor's Parcel Number:
198520-0003

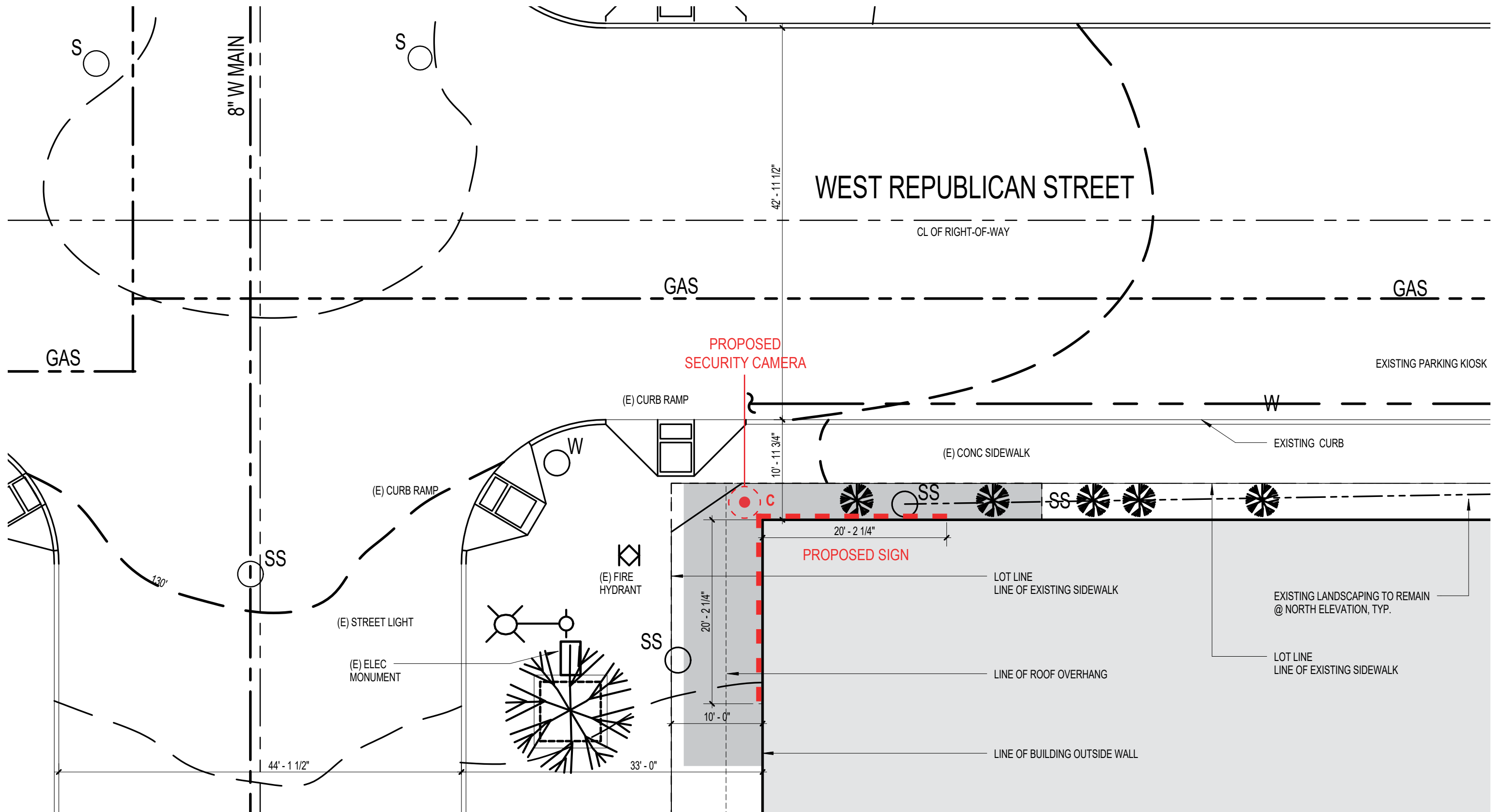
Building ID:
000032708

Updates to courtyard & public plaza under separate proposal

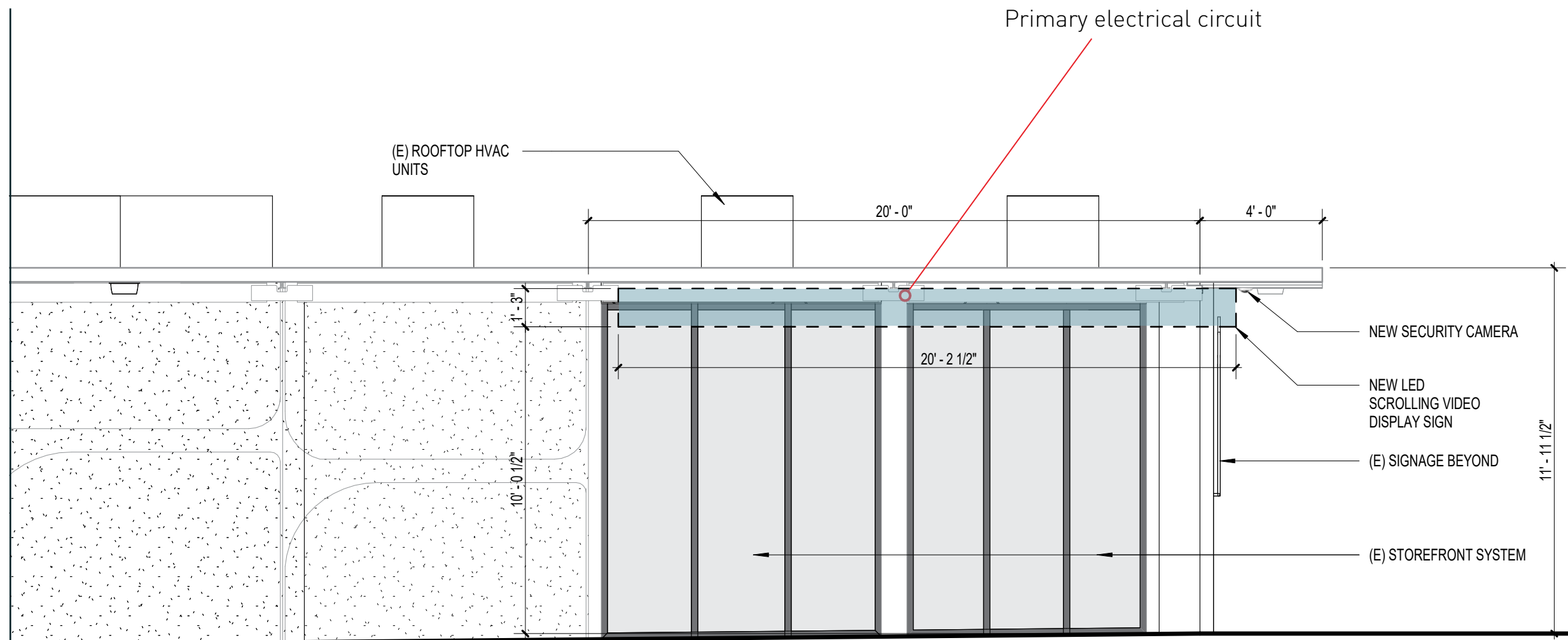


VICINITY MAP





1" = 10' SCALE



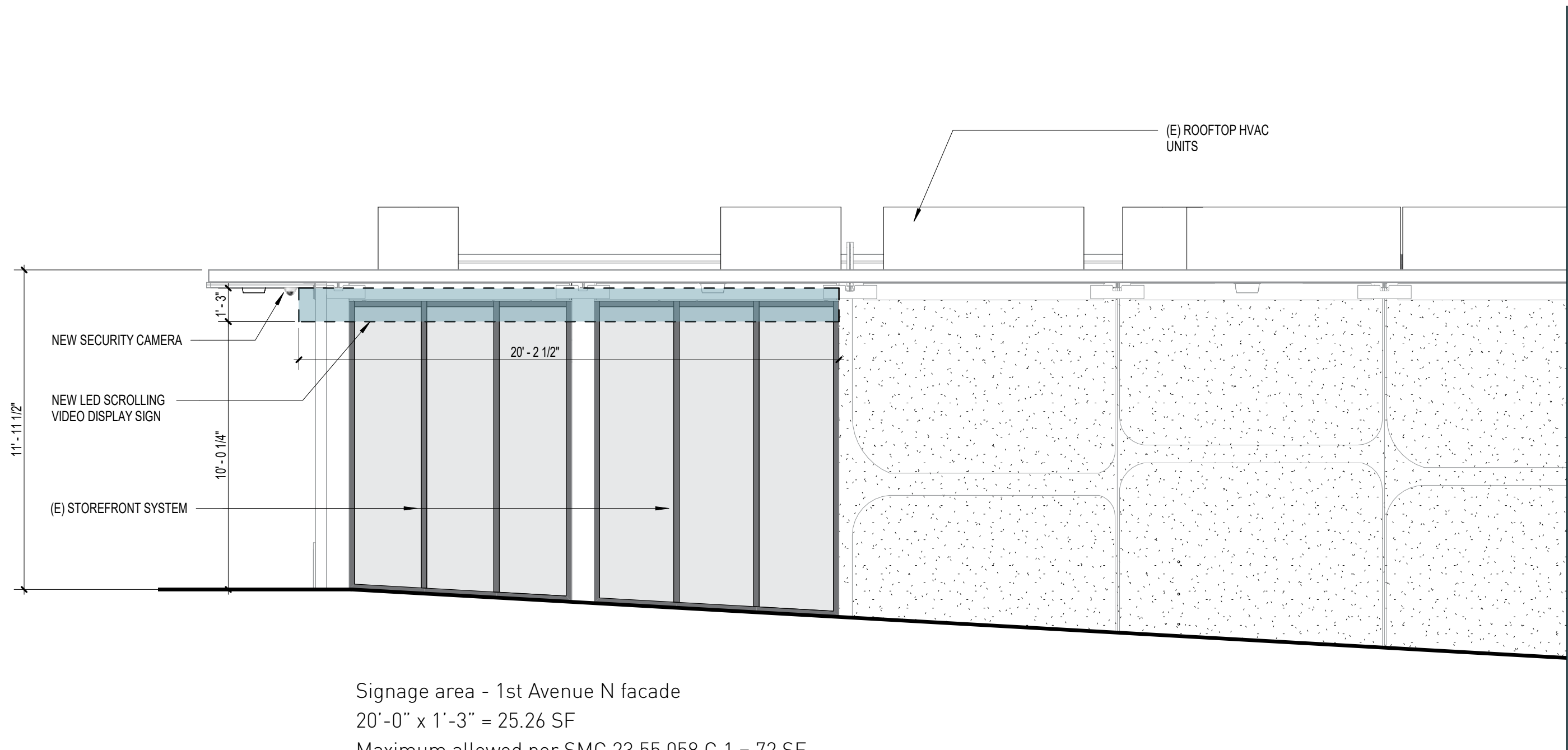
Signage area - Republican facade

$20' - 2 \frac{1}{2}" \times 1' - 3" = 25.26 \text{ SF}$

Maximum allowed per SMC 23.55.058.C.1 = 72 SF

1/4" = 1'-0" SCALE

Page 5 of 21



1/4" = 1'-0" SCALE

WEST ELEVATION



1ST AVENUE NORTH & REPUBLICAN STREET - LOOKING EAST (PRIOR TO RENOVATION OF NW ROOMS IN 2015)



1ST AVENUE NORTH & REPUBLICAN STREET - LOOKING EAST (AFTER KEXP RENOVATION OF NW ROOMS IN 2015)



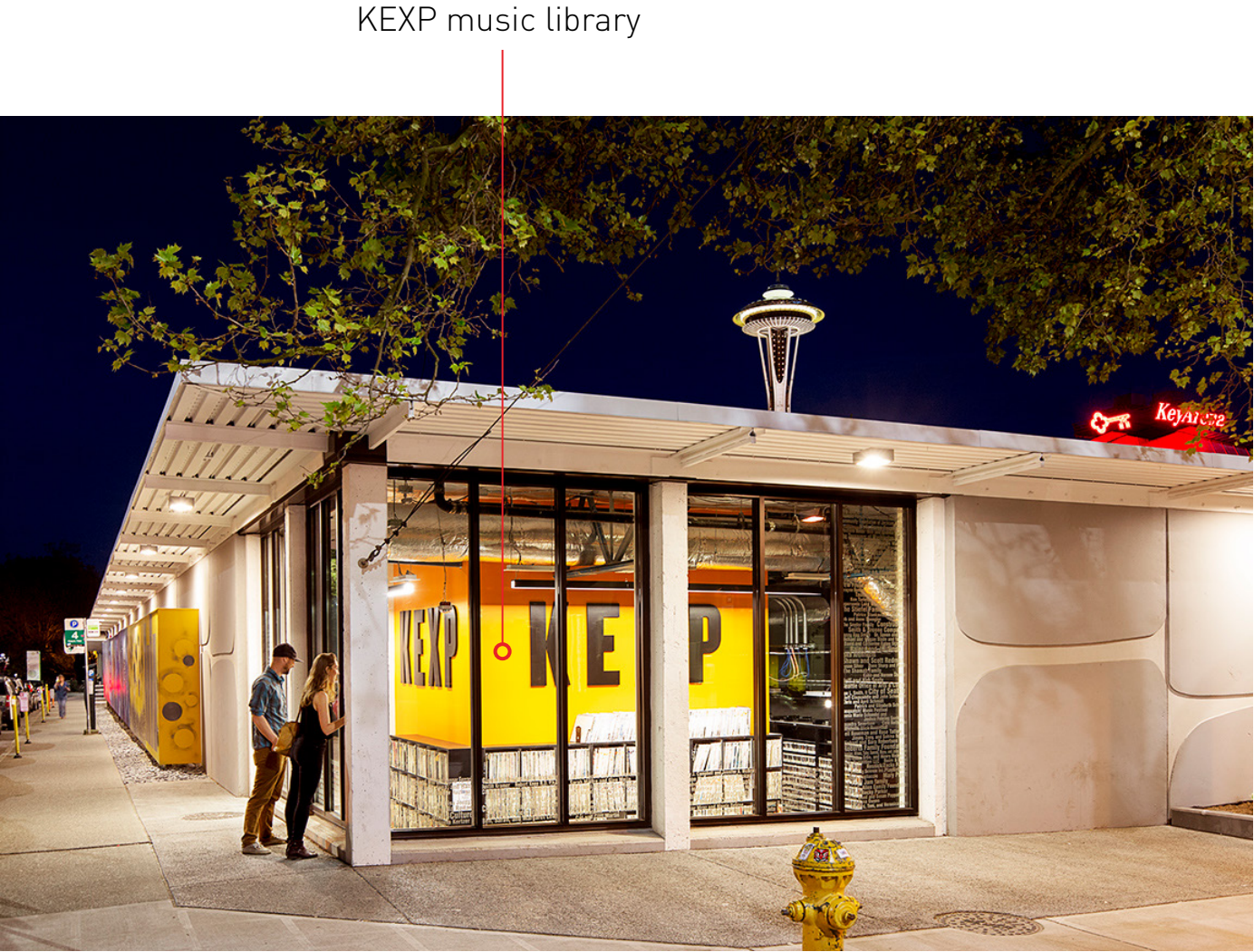
NORTH ELEVATION - VIEWED FROM REPUBLIC STREET

Proposed location of
new LED sign



WEST ELEVATION - VIEWED FROM 1ST AVENUE NORTH

Proposed location of
new LED sign



NORTHWEST CORNER @ LIBRARY - NIGHT VIEW
CORNER OF REPUBLICAN & 1ST AVE NORTH

KEXP music library



NORTH ELEVATION - VIEWED FROM REPUBLIC STREET



WEST ELEVATION - VIEWED FROM 1ST AVENUE NORTH

Proposed new LED video display scrolling image sign with all alphanumeric symbols only (per SMC 23.55.058.H.8)

New security camera (1 of 2)

Programming content continuous scrolling feed to include:

- KEXP logo
- current program
- DJ name
- song title
- artist
- time

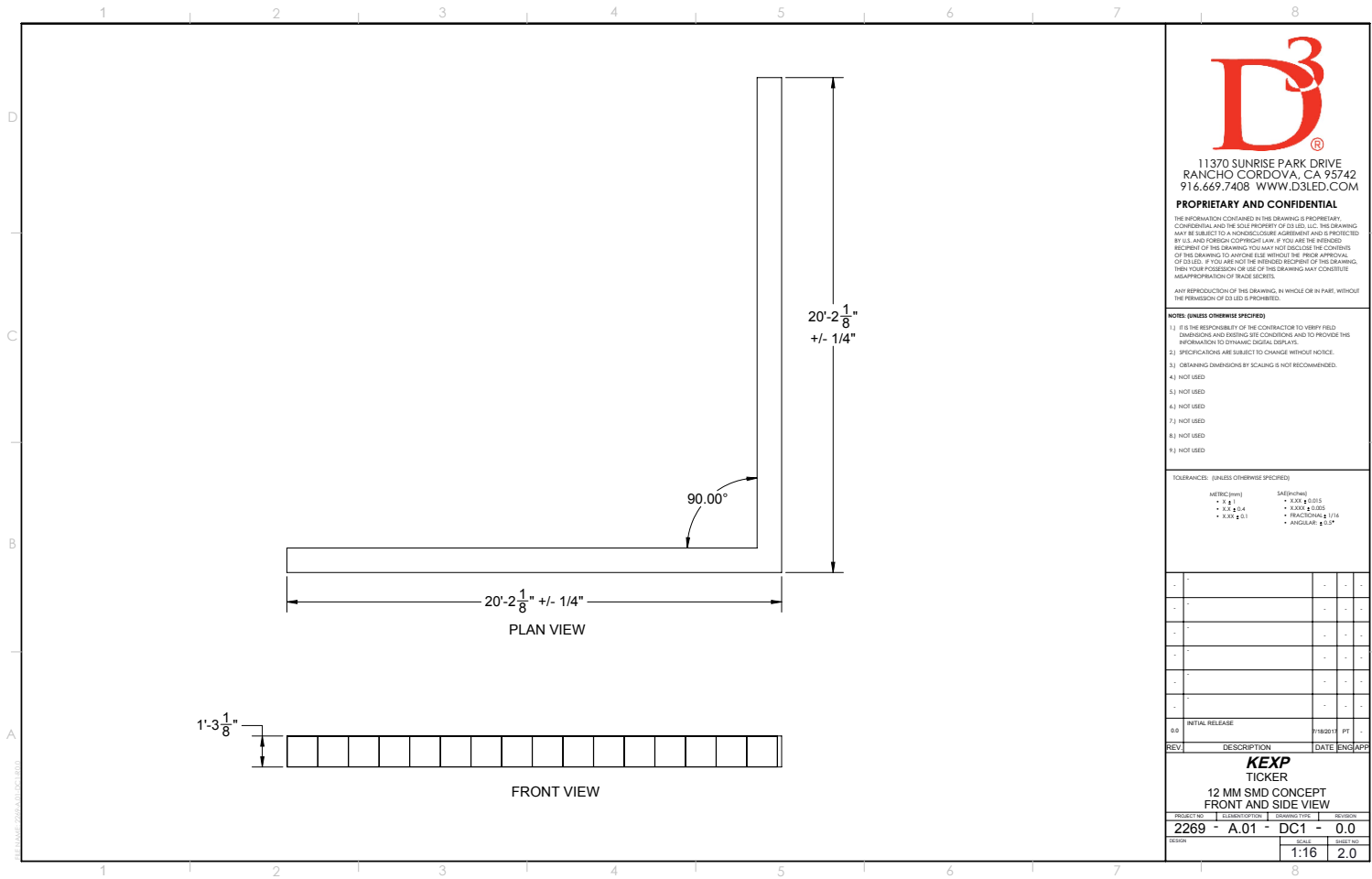


KEXP music library

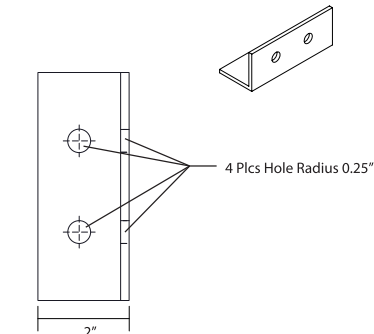
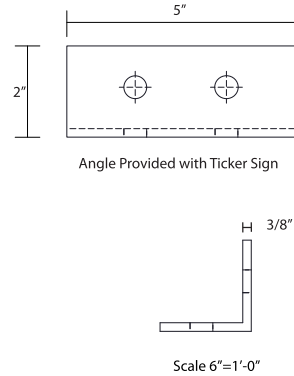
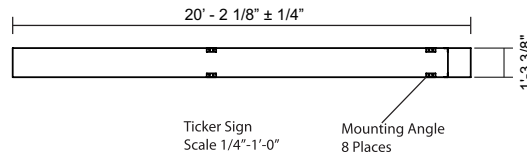
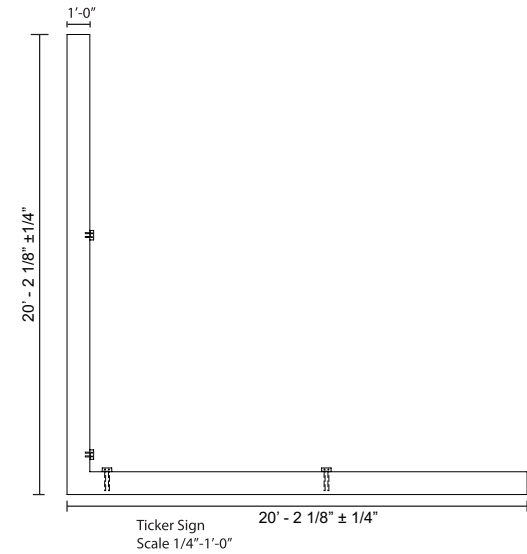


NORTHWEST CORNER @ LIBRARY - NIGHT VIEW
CORNER OF REPUBLICAN & 1ST AVE NORTH

Proposed new LED video display scrolling image sign with all alphanumeric symbols only (per SMC 23.55.058.H.8).



File: "KEXP"



KEXP
472 1ST AVE N
SEATTLE WA 98109-4721

PROPOSED LED DISPLAY FOR KEXP TICKER, 12 MM SMD CONCEPT

LED DISPLAY SPECS	
CONFIGURATION	
FACES:	1
PRODUCT	
MODULE:	XV12-SMD-TE-381X381
PITCH:	12MM
BRIGHTNESS:	8000 NITS
DISPLAY	
MODULE MATRIX:	1 H x 32 W
TOTAL MODULES:	32
RESOLUTION:	32 H x 1024 W
TOTAL PIXELS:	32768
WEIGHT:	800 LBS. (360 KG)
CABINET TYPE:	ALUMINUM EXTRUSION CABINET
FINISH EXTERIOR:	POWDER COAT BK303
FINISH REAR:	MILL FINISH
POWER	
CONNECTED LOAD:	3.3 KW
AVERAGE LOAD:	0.96 KW
DISPLAY CIRCUIT TYPE:	208/240V @ 20A SINGLE PHASE
DISPLAY CIRCUIT QTY:	TBD
CONTROL ROOM CIRCUIT TYPE:	120V @ 20A
CONTROL ROOM CIRCUIT QTY:	TBD
COOLING	
METHOD:	FORCED AIR
HEAT GENERATION (MAX):	11000 BTU
HEAT GENERATION (AVG):	3300 BTU
DATA	
CABLE TYPE:	TBD
QUANTITY:	TBD

GENERAL NOTES

DRAWINGS AND NOTES DEPICT STANDARD DESIGN FEATURES COMMONLY USED. ANY VARIATIONS SHALL BE SHOWN IN DETAIL ON THE MECHANICAL DESIGN INTENT (MDI) RELEASE.

COOLING

DISPLAYS ARE TYPICALLY COOLED VIA FORCED AIRFLOW (UNLESS OTHERWISE NOTED). D3 RECOMMENDS CABINETS WITH AMBIENT AIR INTAKE AND HOT AIR EXHAUST THROUGH VENTS. THE VENTS MAY NOT BE OBSTRUCTED IN ANY WAY AND MUST BE CLEAR TO AMBIENT AIR. CUSTOM VENTILATION SYSTEMS CAN BE ENGINEERED AND SUPPLIED AT ADDITIONAL COST. CLIENT IS RESPONSIBLE FOR PROVIDING ADEQUATE SPACE FOR AIRFLOW AT THE BACK OF THE DISPLAY.

POWER

DISPLAYS TYPICALLY REQUIRE 208-240V SINGLE PHASE CIRCUITS, 50-60HZ @ 20A TERMINATED AT THE DISPLAY (UNLESS OTHERWISE NOTED). INSTALLS WILL ALSO TYPICALLY INCLUDE 120V @ 20A DELIVERED TO THE CONTROLLER LOCATION FOR FRONT END SYSTEM EQUIPMENT. POWER TO EQUIPMENT PROVIDED BY OTHERS.

DATA

UNLESS OTHERWISE NOTED THE LED DISPLAY REQUIRES GIGABIT ETHERNET HOMERUN CONNECTIONS TO THE CONTROLLER. DATA CABLES SUPPLIED AND INSTALLED BY OTHERS. CAT6 CABLING IS APPROPRIATE UP TO A DISTANCE OF 300' AND WILL NEED TO BE TERMINATED AT THE DISPLAY. LONGER DISTANCES MAY REQUIRE FIBER OPTIC CABLE AND CONVERSION EQUIPMENT. FIBER CONVERTERS CAN BE SUPPLIED AND PRE-INSTALLED BY D3 UPON REQUEST AT AN ADDITIONAL COST.

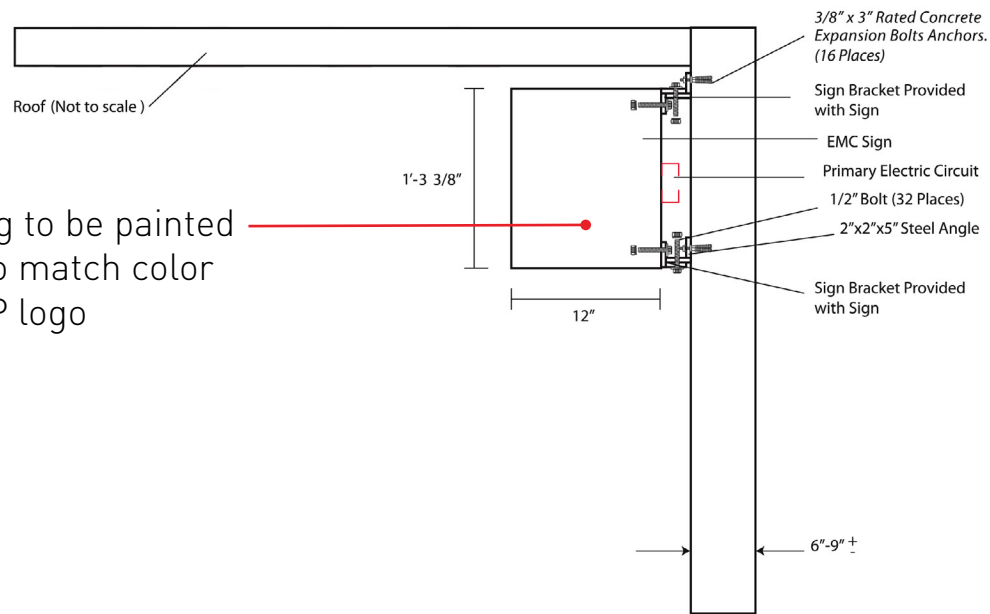
CONTROL SYSTEM

D3 MAY PROVIDE A TURNKEY FRONT END SYSTEM (FES) FOR CONTENT PLAYBACK. THE SYSTEM TYPICALLY INCLUDES THE D3 PLAYER FOR SCHEDULING AND CREATING PLAYLISTS AND D3 TRUE ELEMENT PROCESSOR FOR FULL CONTROL OF THE DISPLAY. THE FES IS TYPICALLY RACK MOUNTED IN AN ENVIRONMENTALLY CONTROLLED LOCATION (RACK SUPPLIED BY OTHERS) OR EMBEDDED WITHIN THE DISPLAY. ANY ALTERNATIVE FES MOUNTING SYSTEMS WILL BE SPECIFICALLY NOTED. INQUIRE AS NECESSARY FOR DETAILS. ACTUAL CONTROL SYSTEM EQUIPMENT IS DEPENDENT ON CONTRACT.

NETWORK

NETWORK CONNECTIONS FOR REMOTE CONTENT MANAGEMENT, DISPLAY MONITORING, DIAGNOSTICS AND SERVICE, TO BE PROVIDED AT THE FES/CONTROL SYSTEM BY OTHERS.

Housing to be painted black to match color in KEXP logo



END VIEW
Scale 1"-1'-0"

CONNECTION DETAIL - NTS

D³

XV12 | SMD

UHD LED DISPLAYS

FEATURE HIGHLIGHTS



ADVANCED
DIAGNOSTICS 2-WAY
COMMUNICATION



ADVANCED DUAL
LAYER WATER
PROTECTION



ALL-IN-ONE
SELF-CONTAINED
MODULE



QUADLOCK™
4 POINT LATCHING
SYSTEM



FUTURE
UPGRADE
COMPATIBLE



COMPLETE
FRONT
SERVICE



EXPANDED
VIEWING
ANGLES



COMPLETE
REAR
SERVICE

UPGRADE OPTIONS

High Contrast LEDs

Photo Cell Auto Dimming

Advanced Customization

Extended Warranty & Service Program

TrueWatch™ Diagnostics Alert System

TrueData™ Module Level Redundancy

TruePower™ Redundancy

Farm Module Management System

Advanced Scheduling

MOV File Conversion Processor

Picture Overlay

Scaling

Switching

Video Capture

Controller Redundancy

XV	12	SMD	TE	381x381
SERIES	PITCH	DIODE STYLE	TECHNOLOGY	MODULE SIZE

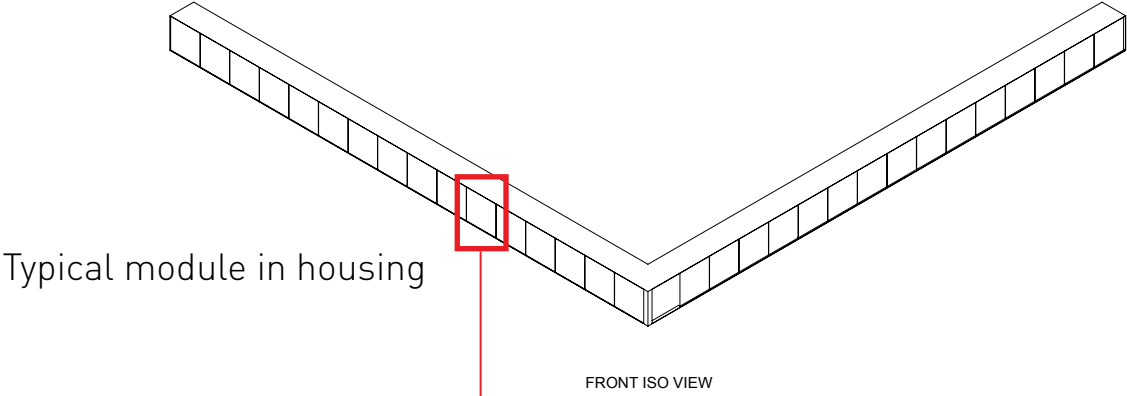
TECHNICAL SPECIFICATIONS

VISUAL PERFORMANCE	
Brightness	8000 Nits Maximum
Resolution/Module	32x32 Pixels
Total Pixels/ Module	1,296 Pixels
Refresh Rate	20 MHz
Frames per second	60 FPS / 120 FPS
Color Depth	54 Bit
Colors	18.0 Quadrillion
Color Temperature Adjustable	3,500K - 10,000K
Viewing Angle Horizontal	140°
Viewing Angle Vertical	140°

ELECTRONICS	
LED	SMD
Power	110-240 VAC, 50/60 Hz
Power Maximum @100% Full White	100 Watts
Power Typical Consumption @30%	30 Watts
Anticipated Lifetime	100,000 Hours
Dimming Capability	1-100% in 1% Increments

PHYSICAL CHARACTERISTICS	
Pixel Pitch	12 mm
Module Height	1.5" (381mm)
Module Width	15" (381mm)
Module Depth	5.8" (148mm)
Service Access	Front & Rear
Weight/Module	11 Lbs(5 kg)
Operating Temperature	-4° to 122°F (-20° to 50°C)

RATINGS CERTIFICATIONS	
Certification	ETL
Environmental Rating	NEMA 4x, IP65

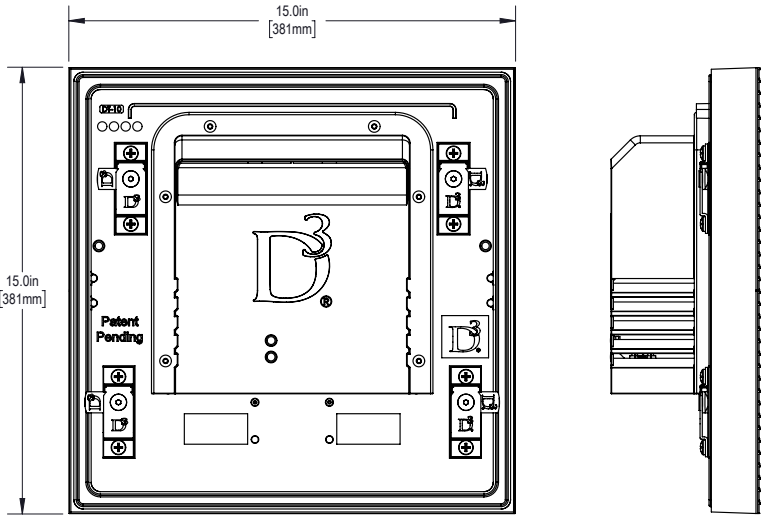
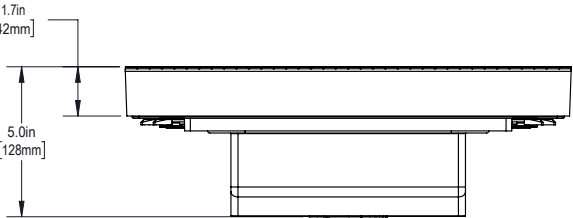


Typical module in housing

FRONT ISO VIEW

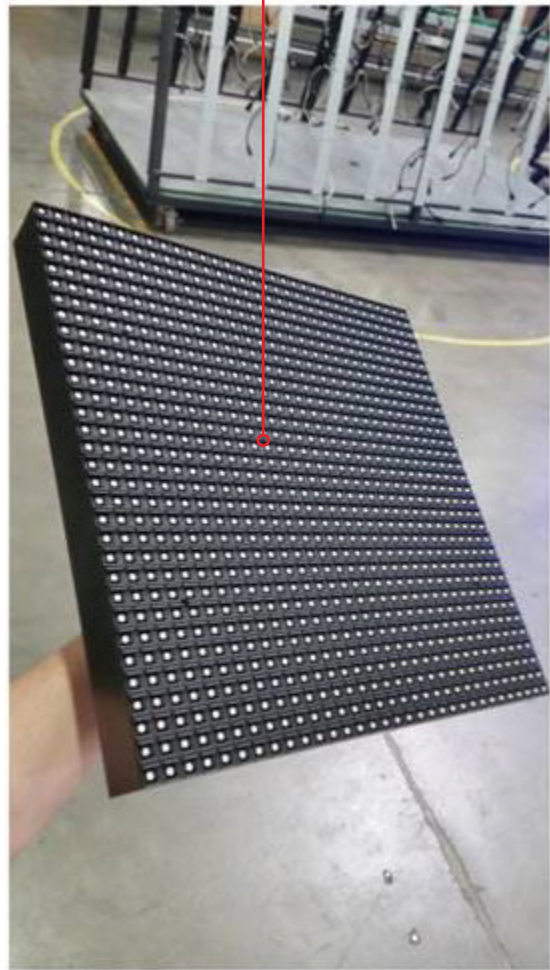
XVIEW | XV-12-SMD-TE-381x381

OUTDOOR LED DISPLAY MODULE

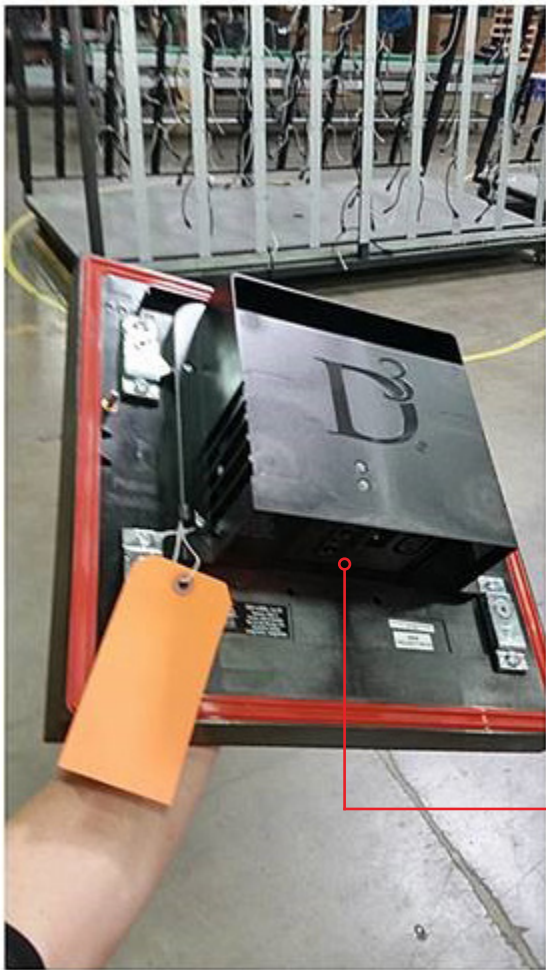


TICKER LED DISPLAY - SPECS

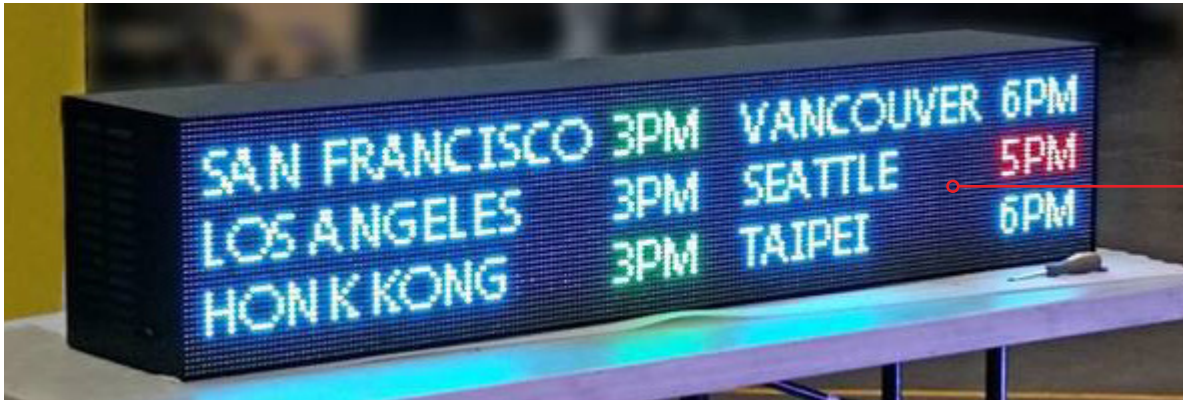
Appearance (non-illuminated)



front

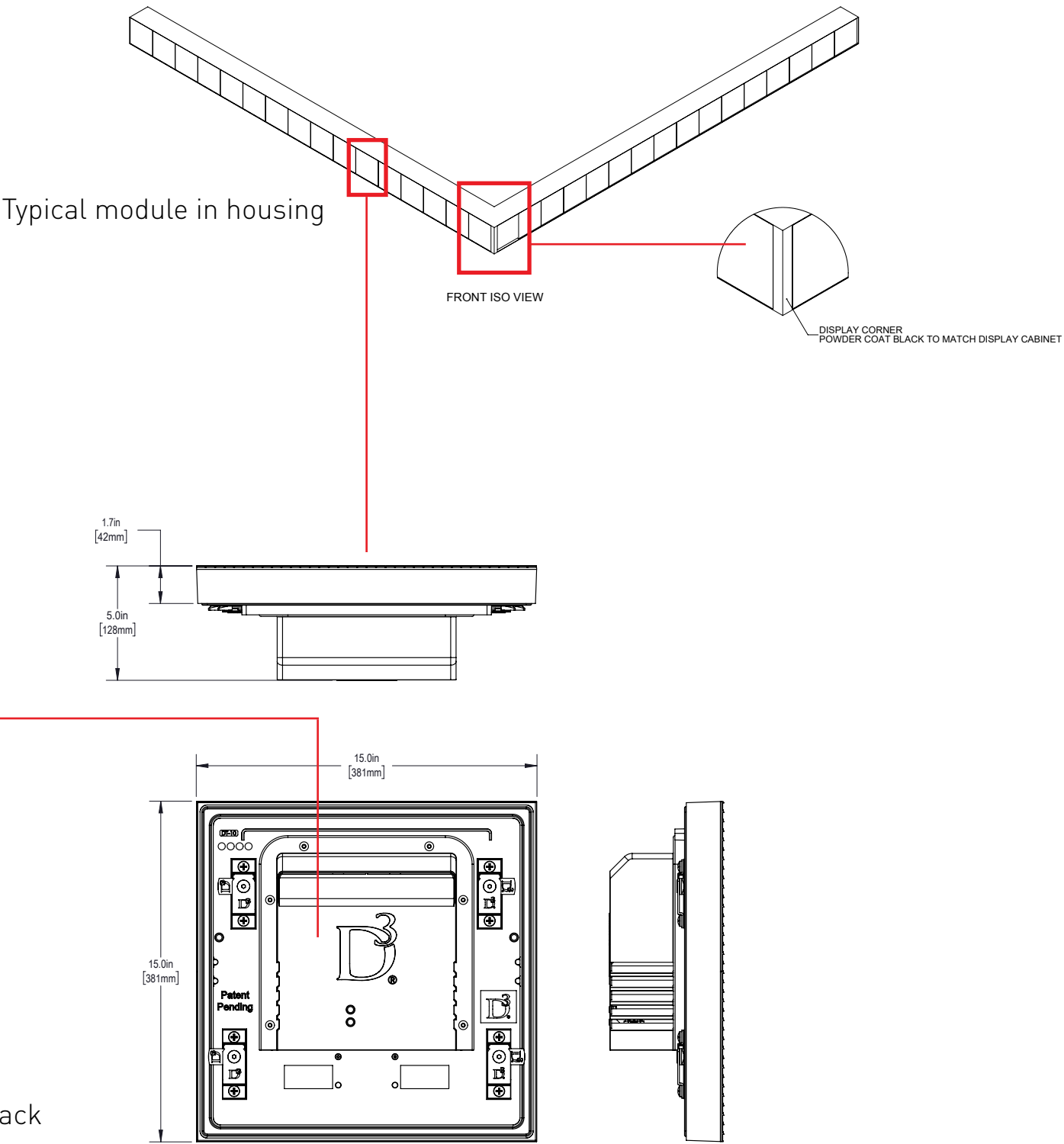


rear



LED FONT APPEARANCE (EXAMPLE)

Text
white on black
or
gold on black (to match color in KEXP logo)



A



AMCREST

IP8M-2454EW



Technical Specifications

- CAMERA**

Image Sensor 1/2.5" CMOS

Resolution Up to 4K Ultra HD (3840 x 2160)

Night Vision Up to 164 ft (2IR LEDs)

OPTICAL ZOOM LENS

Lens Type Motorized / Auto Iris (DC)

Motorized Optical Zoom 4x

Angle of View H: 40° ~ 110° V: 23° ~ 58°

MANUAL PAN/TILT

355° Pan, 75° Tilt
- VIDEO**

Compression H.265+ / H.265

H.264+ / H.264

Frame Rate

Mainstream: 4K (1~15fps)

CONSTRUCTION

IP67 Weatherproof

IK10 Vandal Resistant

Dimensions 4.8" x 3.5" Weight 1.1 lbs
- NETWORK**

Power Over Ethernet

RJ-45 (10 / 100 Base-T)

STORAGE

MicroSD (Up to 128GB)

Amcrest Cloud - Amcrest NVR -

Local PC - NAS System

MOBILE VIEWING

iOS and Android Devices

SECURITY CAMERA @ 1ST AVE N (EXISTING)

B



AMCREST

IP8M-2493EW



Technical Specifications

- HD Resolution**

4K Ultra HD (3840 x 2160) video at 15fps,

Up to 2K HD (2048 x 1536) video at 30fps

Field of View

112° super-wide viewing angle (diagonal)

Digital Zoom

16x digital zoom for a closer look

Smart IR Night Vision

Up to 98 feet with 18 IR LEDs
- Storage Options**

MicroSD card (up to 128GB), Amcrest NVR,

Amcrest Cloud, FTP, or NAS system

Protective Housing

IP67 weatherproof housing,

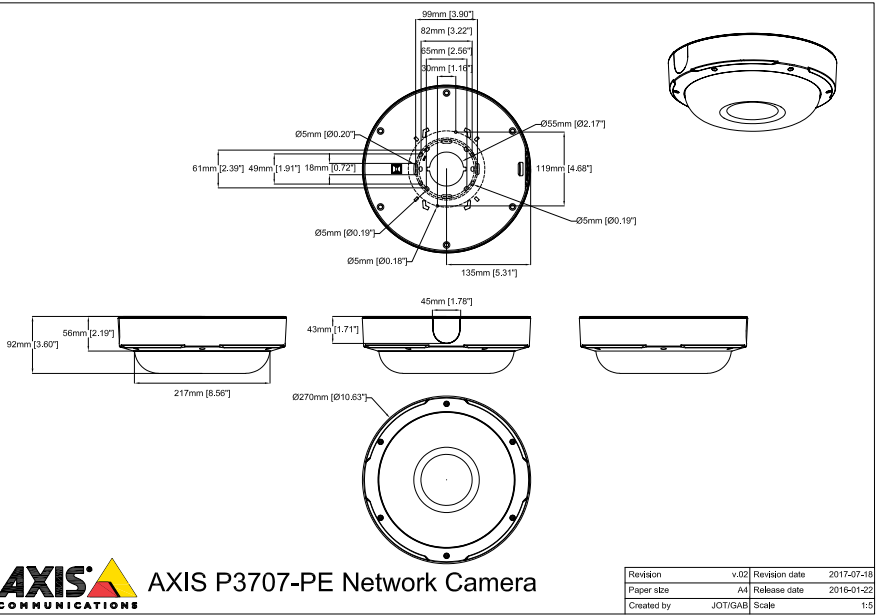
IK10 Vandal Resistant

Weight

0.85 lbs

SECURITY CAMERA @ BREEZEWAY - PROPOSED

C



SECURITY CAMERA @ CORNER - PROPOSED

SECURITY CAMERA COMPONENTS



EXISTING SECURITY CAMERA @ 1ST AVE N - LOOKING NORTH



PROPOSED SECURITY CAMERA @ 1ST AVE N & REPUBLICAN



EXISTING SECURITY CAMERA @ 1ST AVE N - LOOKING SOUTH



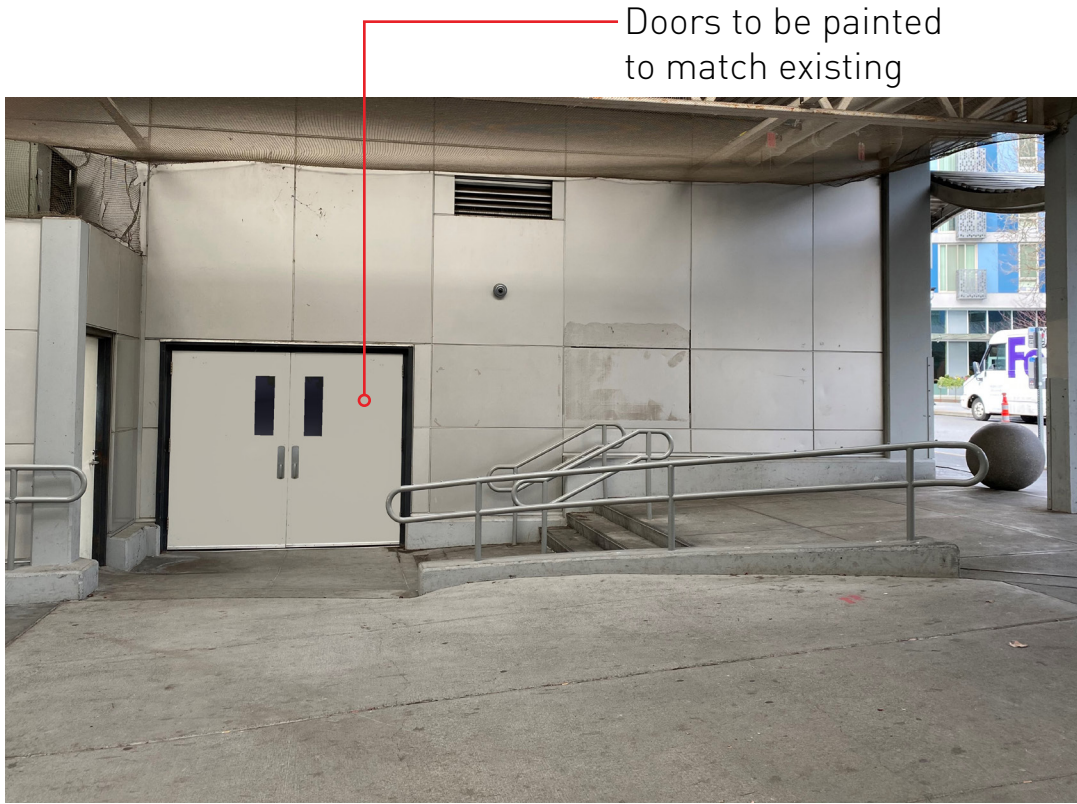
Installation detail (existing)
camera mounted to back
plate painted to match wall
attached to wall with flush
screws



PROPOSED ADDED SECURITY CAMERA @ BREEZEWAY NW

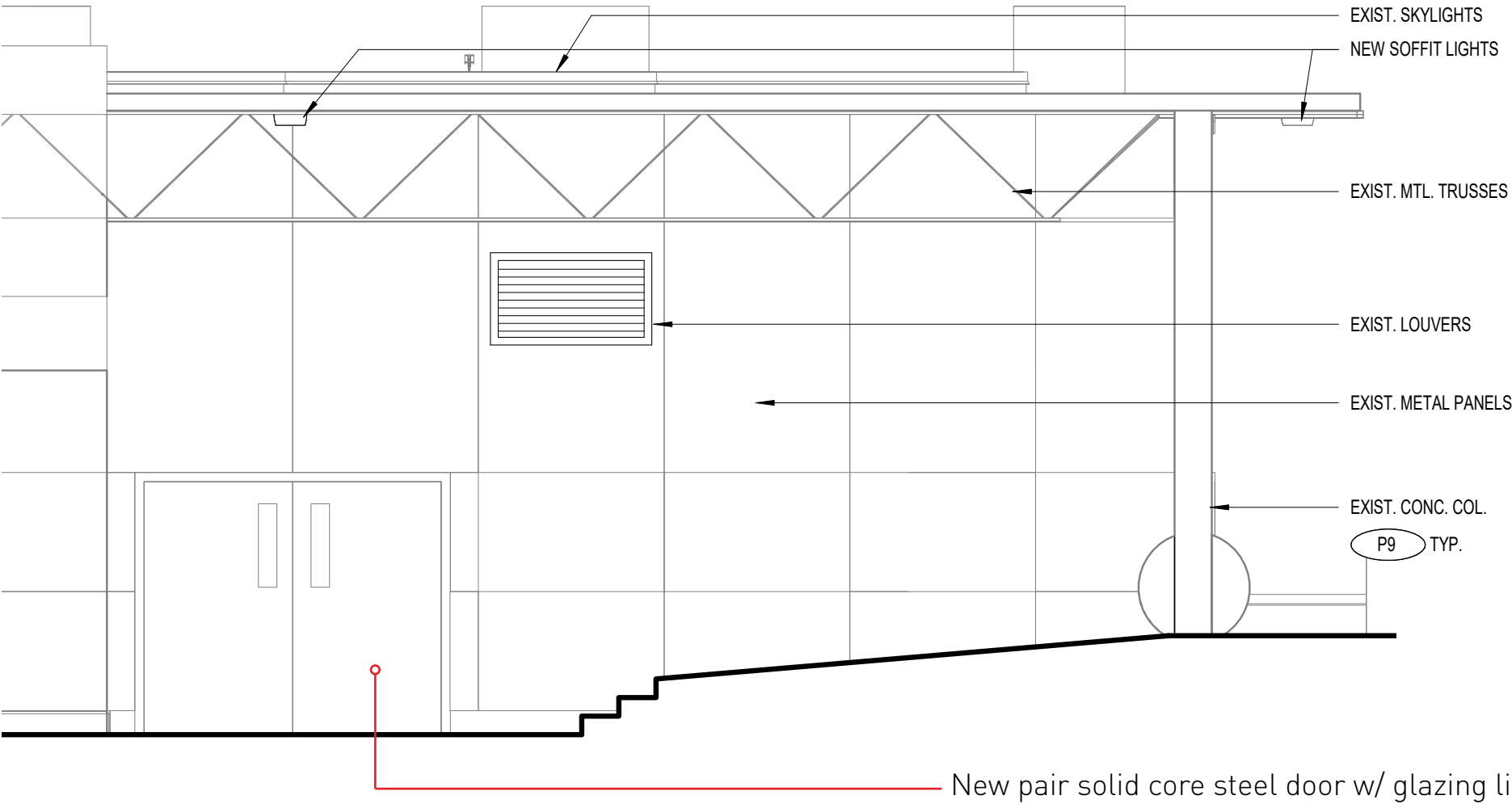
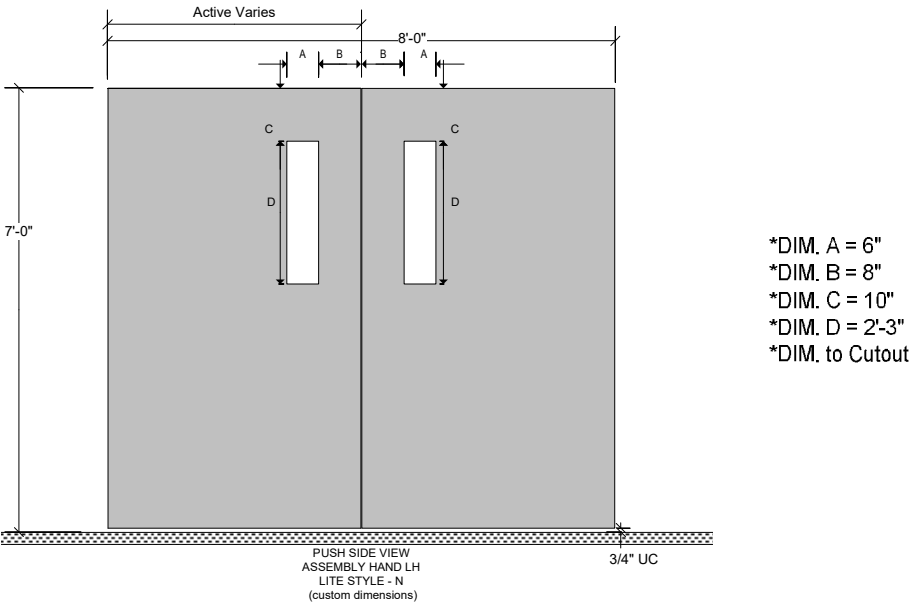


EXISTING CONDITIONS AT BREEZEWAY EAST ELEVATION



PROPOSED SERVICE DOOR REPLACEMENT

Door type - elevation



PROPOSED NEW SERVICE DOORS

EAST ELEVATION - SERVICE DOORS

Existing conditions and location of primary logo signage @ South facade

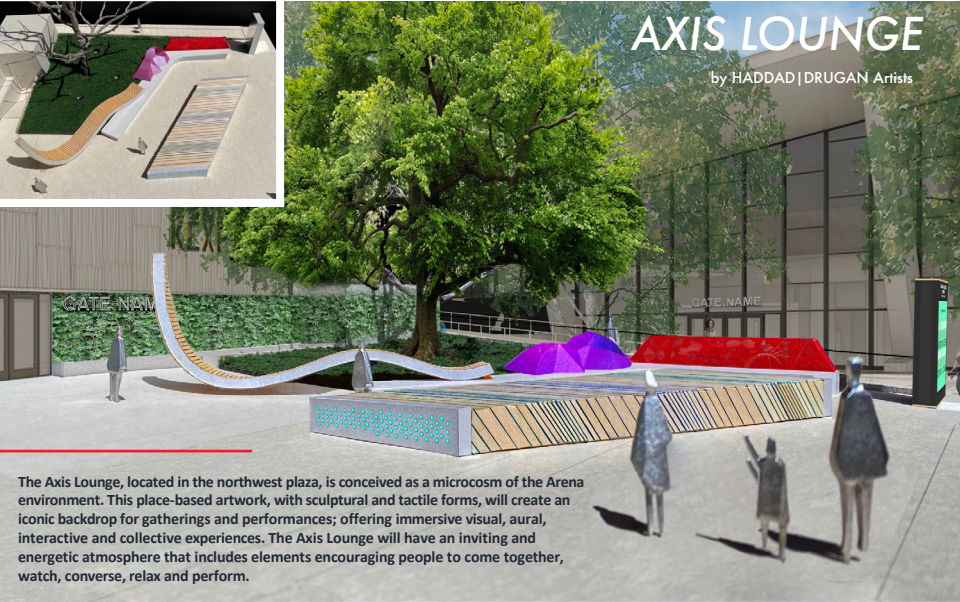


Source: Century 21 Coliseum / Key Arena Landmarks C of A package 5/1/19

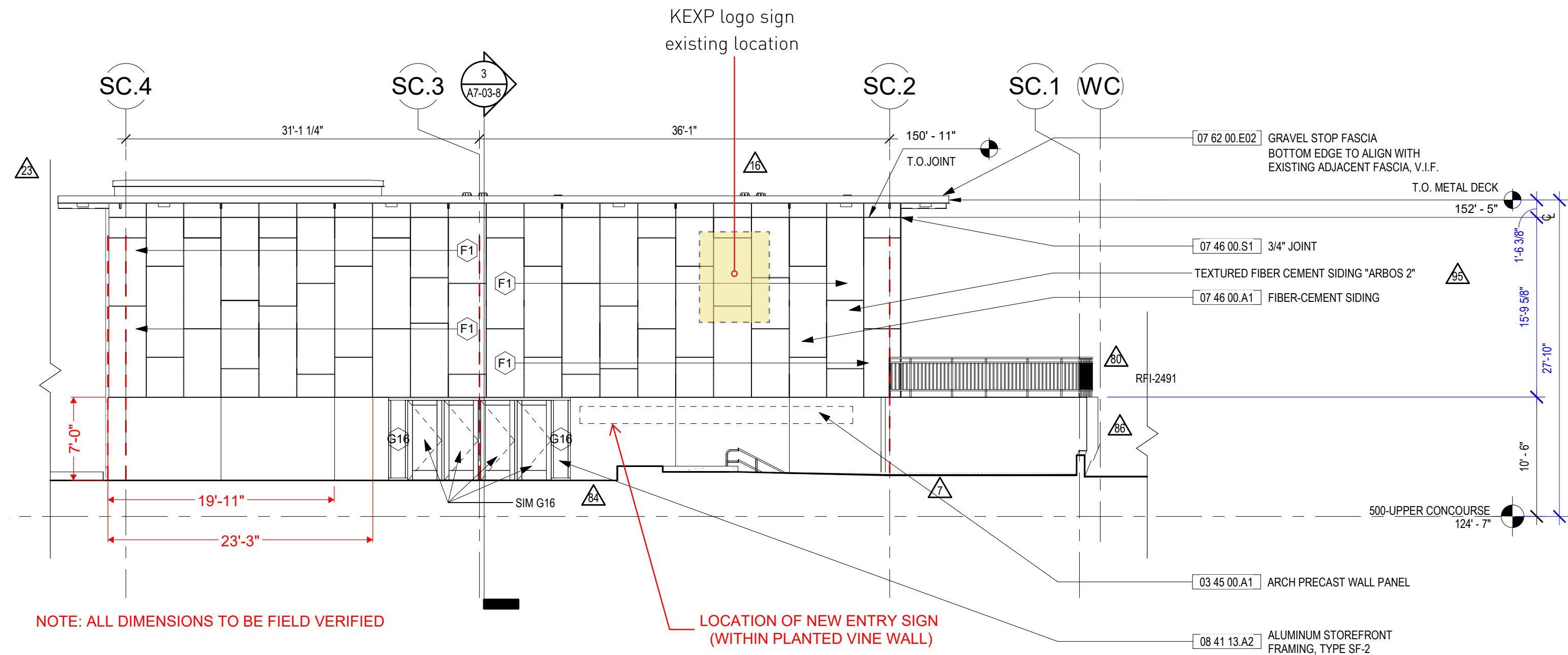


Logo location per the Seattle Center Arena Landmarks C of A proposal

Source: Century 21 Coliseum / Key Arena Art on proposed site and building signage 10/7/20



Source: Century 21 Coliseum / Key Arena Art Plan C of A 11/18/20



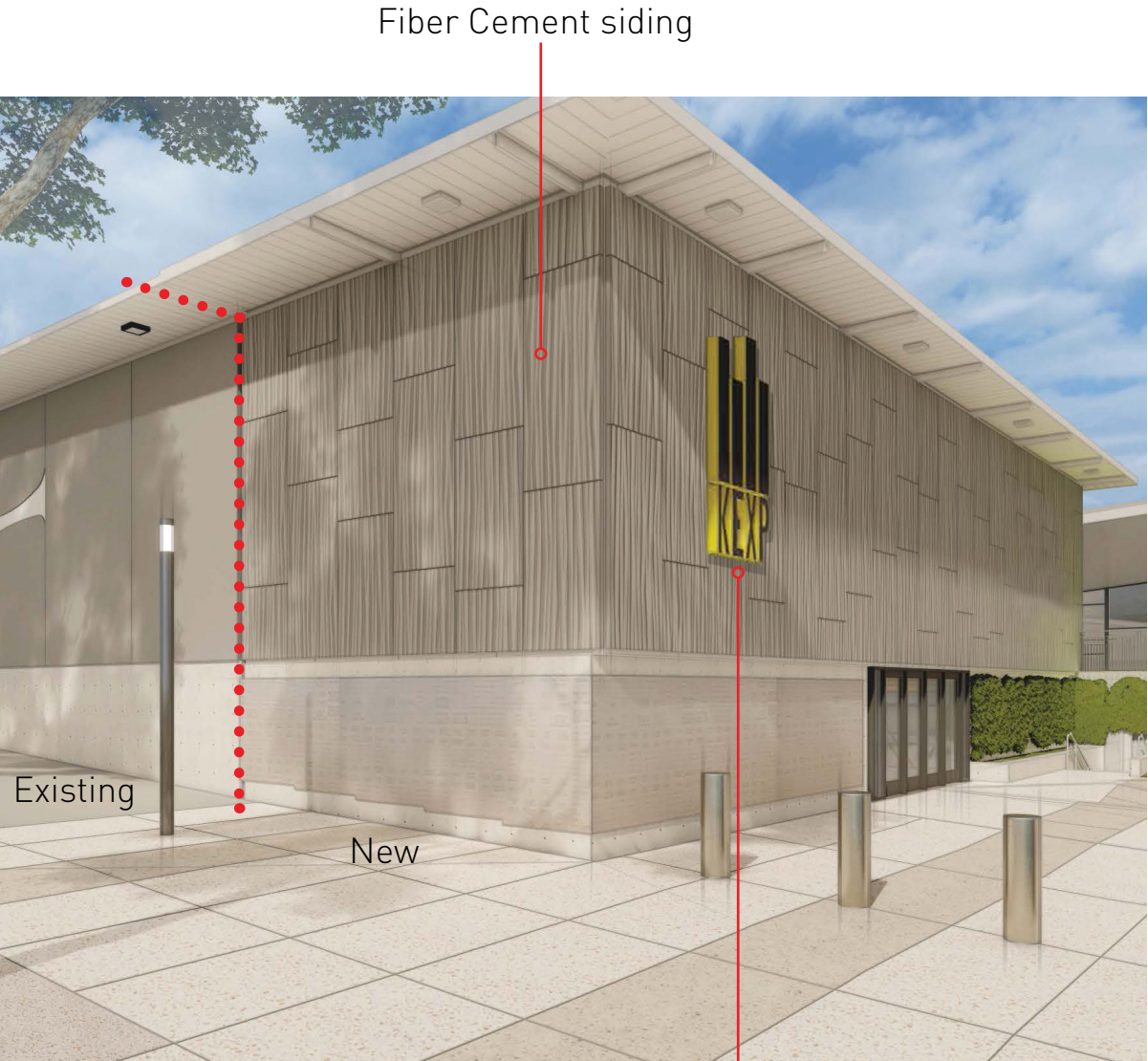
NW Mechanical Intake & Exhaust - South Elevation

Source: Populous



Source: Century 21 Coliseum / Key Arena Art on proposed site and building signage 10/7/20

Primary existing logo signage to be relocated to avoid visibility limitations along 1st Ave North by proposed new tree planting & art installation at Arena plaza.



Source: Century 21 Coliseum / Key Arena Landmarks C of A package 5/1/19



WEST ELEVATION

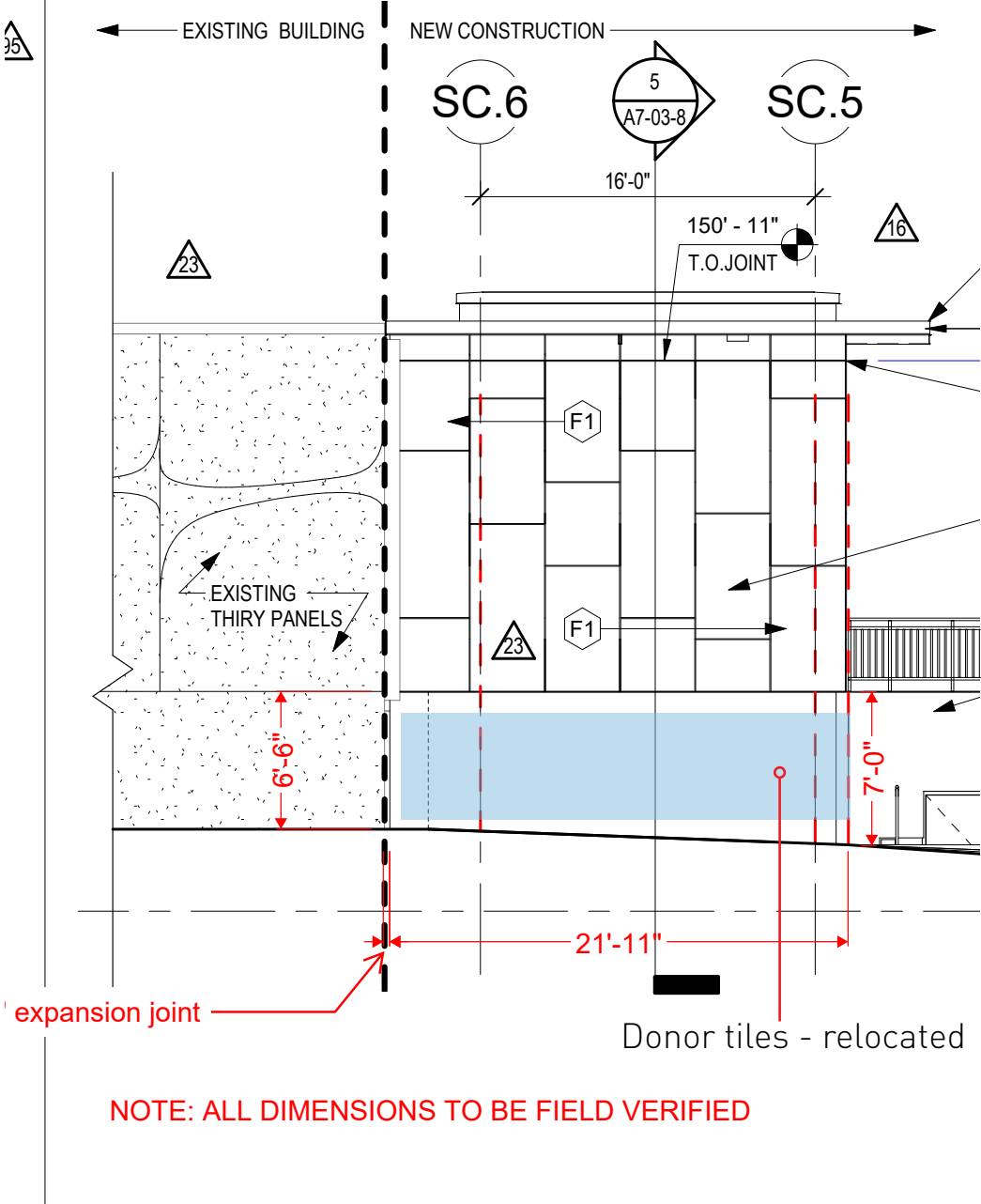


SOUTH ELEVATION

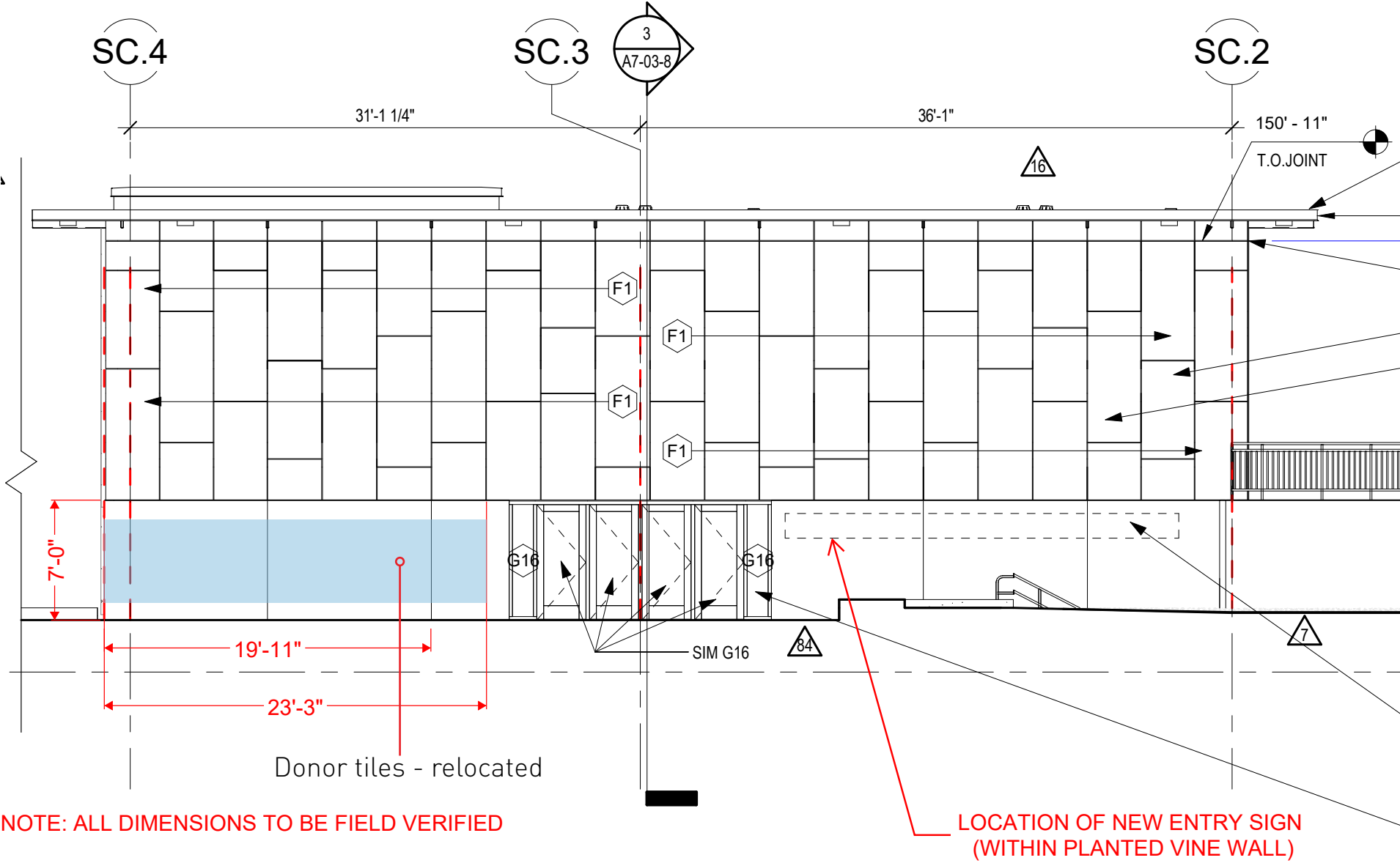
Donor tiles
(existing conditions)

WEST & SOUTH ELEVATION - DONOR TILES





WEST ELEVATION



SOUTH ELEVATION

WEST & SOUTH ELEVATION - DONOR TILES

Donor tiles

Removed & mounting hole locations filled w/ concrete patch.
Wall to be re-painted to match existing building base color.

Donor tiles

Relocated at corner of new addition.
Tile to be relocated to fit within area of new
addition to building and not extend to current
foundation of building.



Source: Century 21 Coliseum / Key Arena Landmarks C of A package 5/1/19