

“This area affords space if the land is fairly level, for a baseball field, an athletic field, a fieldhouse, some tennis courts, a little folks’ playground, a wading or swimming pool and some lawns and groves with winding walks, ornamental shrubbery and flowers for the general public”

John Charles Olmsted to J. T. Heffernan, October 4, 1910, Job #02690, Seattle Park System. wa.gov).



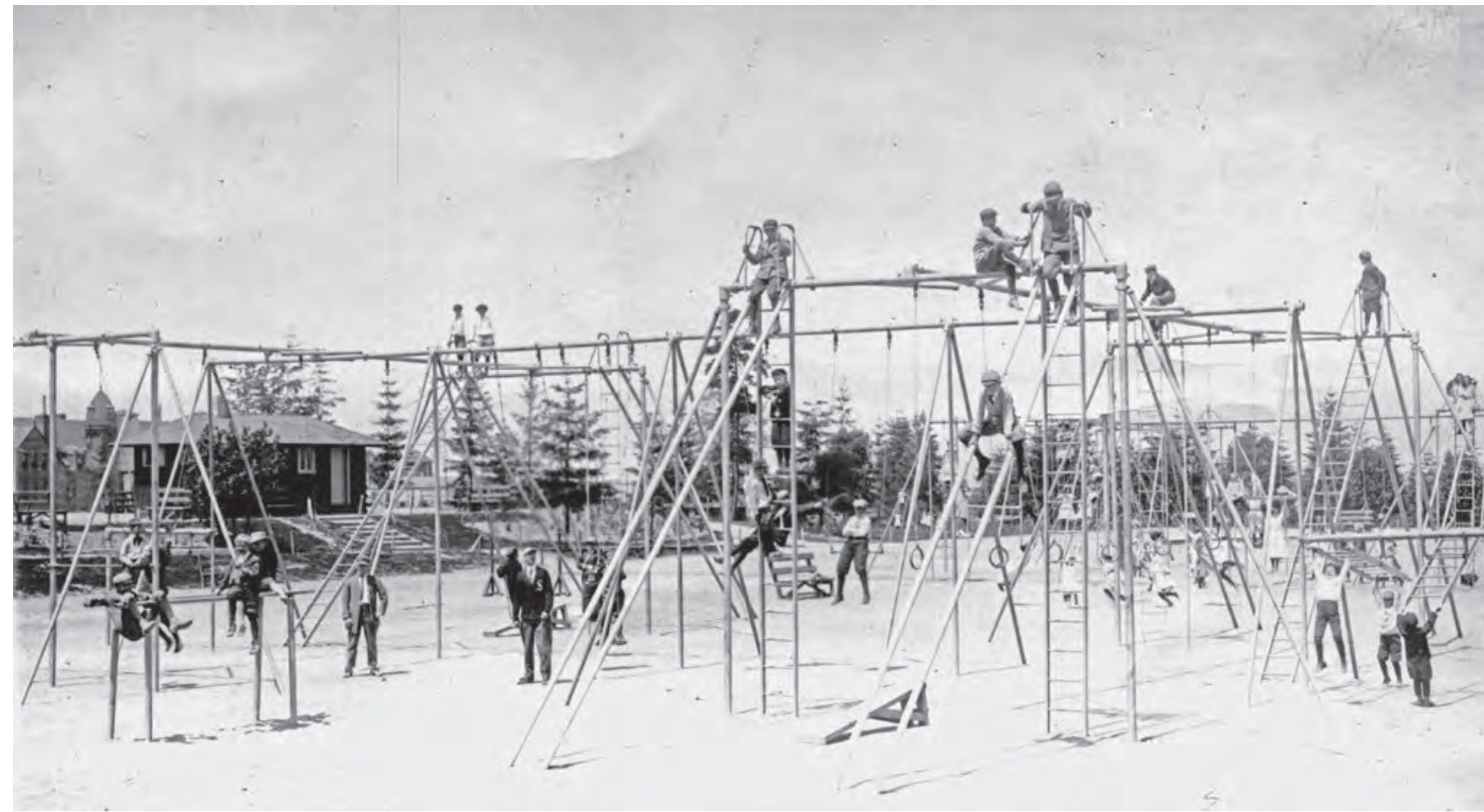
playgrounds in 1900



Wading pool looking north, 1912 by SMA



Swingset, looking W towards tennis courts, 1912



Open Air Gym and swings, looking north, 1912 by SMA



Pool looking south to swings and H.S., 1920, P.I. SMA



Looking towards swingset, 1925, Asahel Curtis Studio



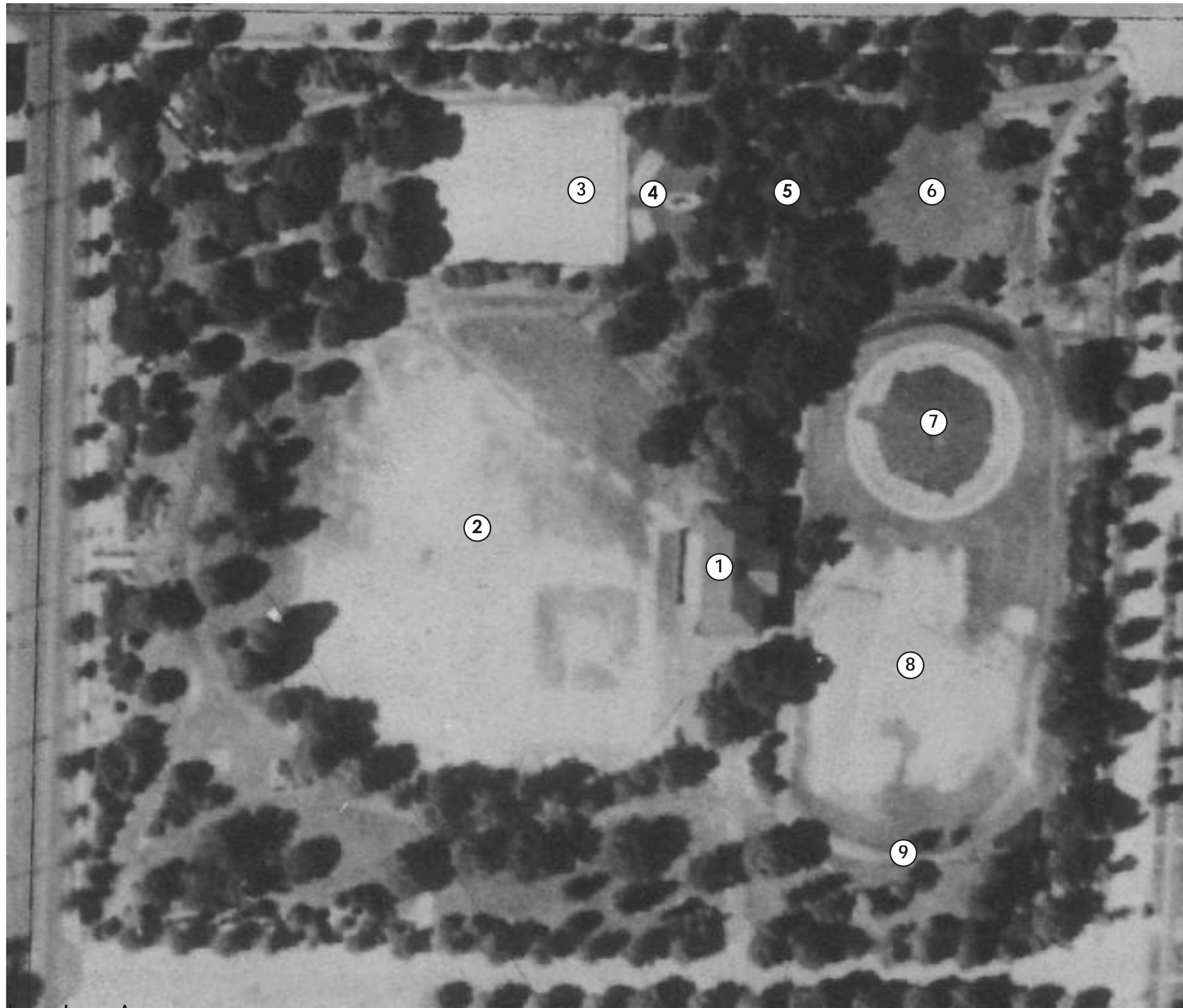
May fete at Hiawatha Playfield 1914 by SMA



May fete at Hiawatha Playfield 1914 by SMA

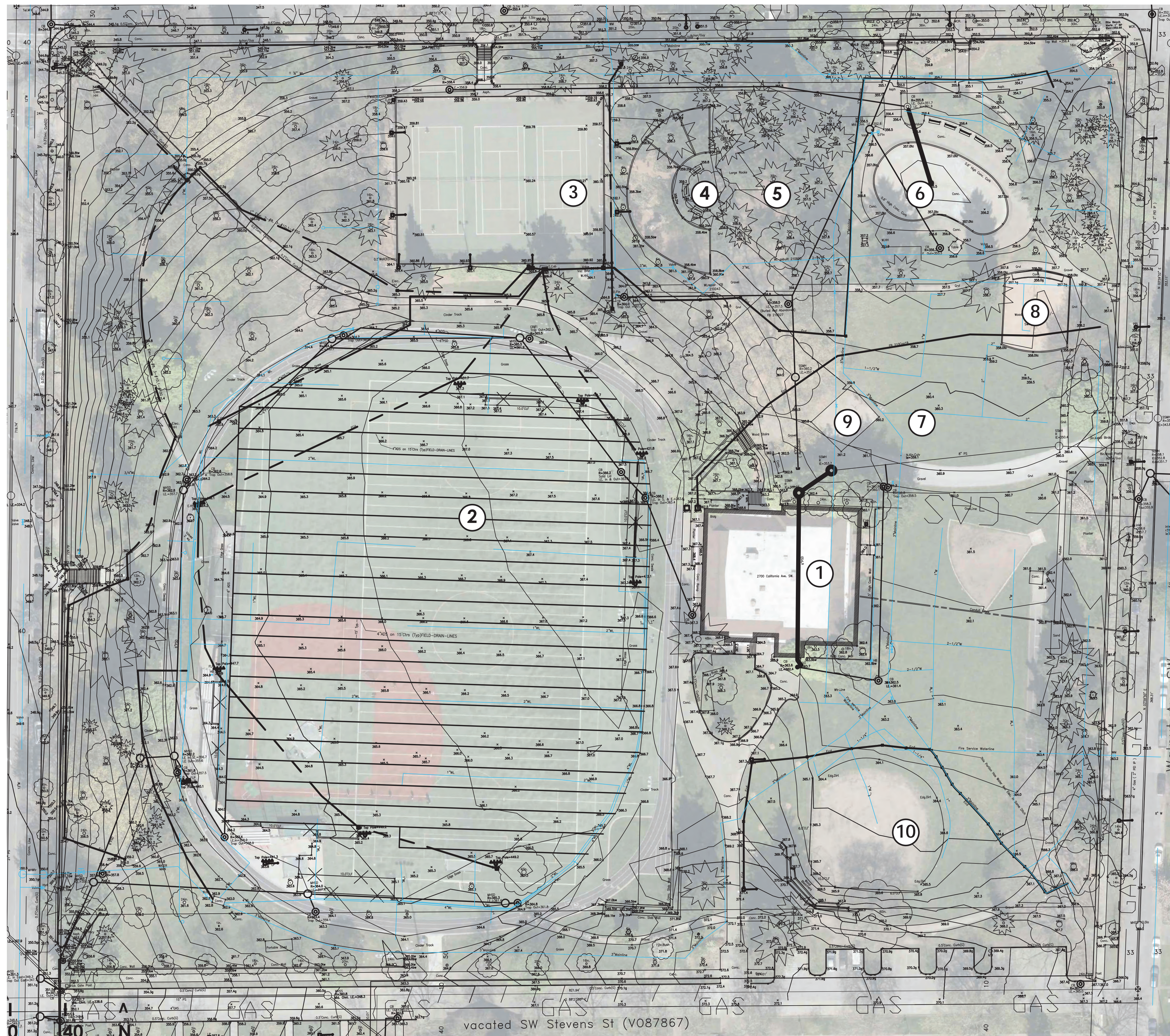


May fete at Hiawatha Playfield 1914 by SMA



- 1 Field House per Olmsted Brothers Office (OBO) plan
- 2 Round Oval Ball Field per OBO
- 3 (3) tennis courts impacts OBO layout (4)
- 4 formal layout per OBO, sand courts installed
- 5 Dense trees run north of Field House
- 6 Original small wading pool removed?
- 7 Original wading pool, per OBO plan
- 8 Location of original outdoor gymnasium, swings
- 9 Track per OBO plan

0 40 N



- 1 Gym added to east of Original Field House
- 2 Oval Ball Field stretched south
- 3 tennis courts unchanged
- 4 play area with formal layout constructed in 1996
- 5 creek-like play area (with boulders) built around trees in 1970s. Play area demolished in 1996, boulders remain.
- 6 kidney shaped wading pool installed in 50s?
- 7 circular wading pool removed, date?
- 8 series of swingsets installed
- 9 Basketball hoop installed
- 10 track converted to softball field, H.S. sports



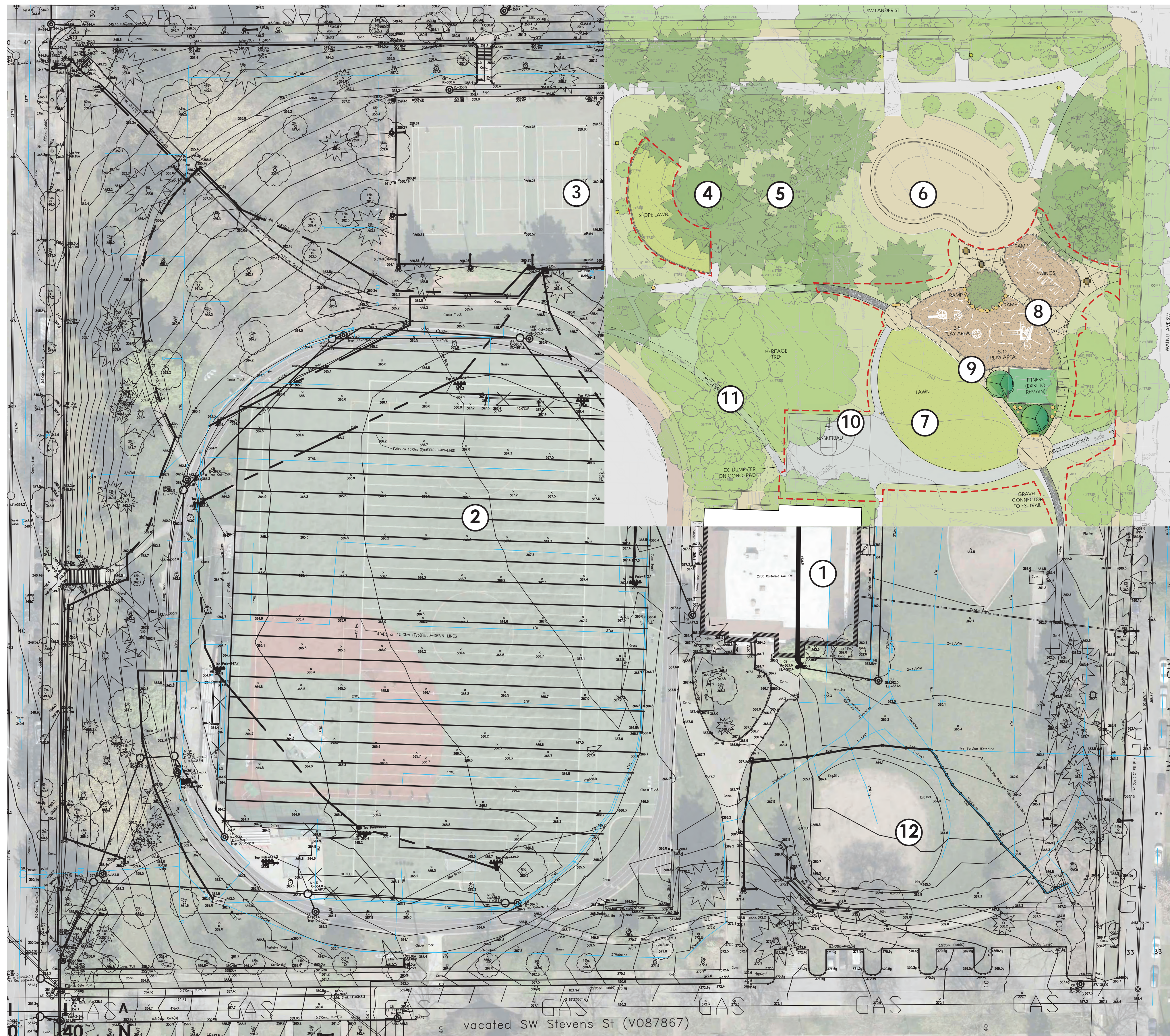
Existing play area



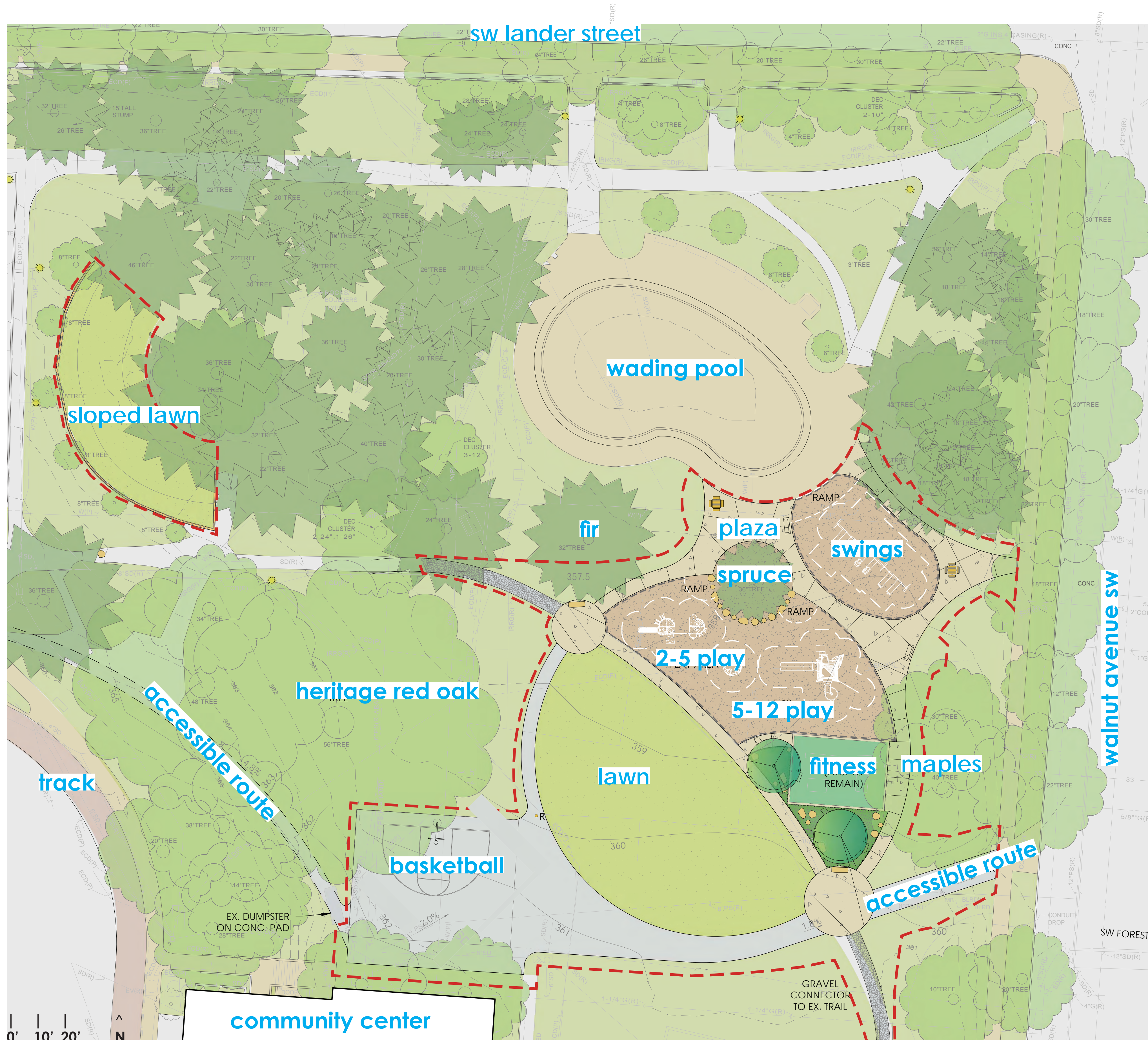
fitness equipment



spruce tree and wading pool beyond



- 1 Field House Renovation project
- 2 Oval Ball Field artificial turf replacement project
- 3 tennis courts resurfacing project
- 4 retain ex. play area frame as amphitheater space
- 5 Retain existing boulders as natural play element
- 6 kidney shaped wading pool - future updates
- 7 retain existing lawn by locating play to eastern edge
- 8 locate new swings further east to provide space for play area. Circle references original Olmsted design (as supported by 2018 Olmsted Parks Report)
- 9 Connector path connects to original gravel paths
- 10 Improve basketball with full half court
- 11 Accessible path aligned with original Oval path
- 12 high school sports



LIMIT OF WORK

EXISTING TREES TO REMAIN
CALIPER SIZE, PER SURVEY

PAVING PER COS STD PLAN 420 WITH THE FOLLOWING EXCEPTIONS:

- SAND-COATED EXP. JOINTS, DEEP TOOLED SCORE JOINTS, NO SHINERS
- LIGHT SANDBLAST FINISH
- SCORING AS INDICATED ON PLAN

ASPHALT PAVING

ASPHALT PAVING

CONCRETE PAVEMENT THICKENED EDGE

ENGINEERED WOOD FIBER PLAY SURFACING

GRAVEL PATH CONNECTOR

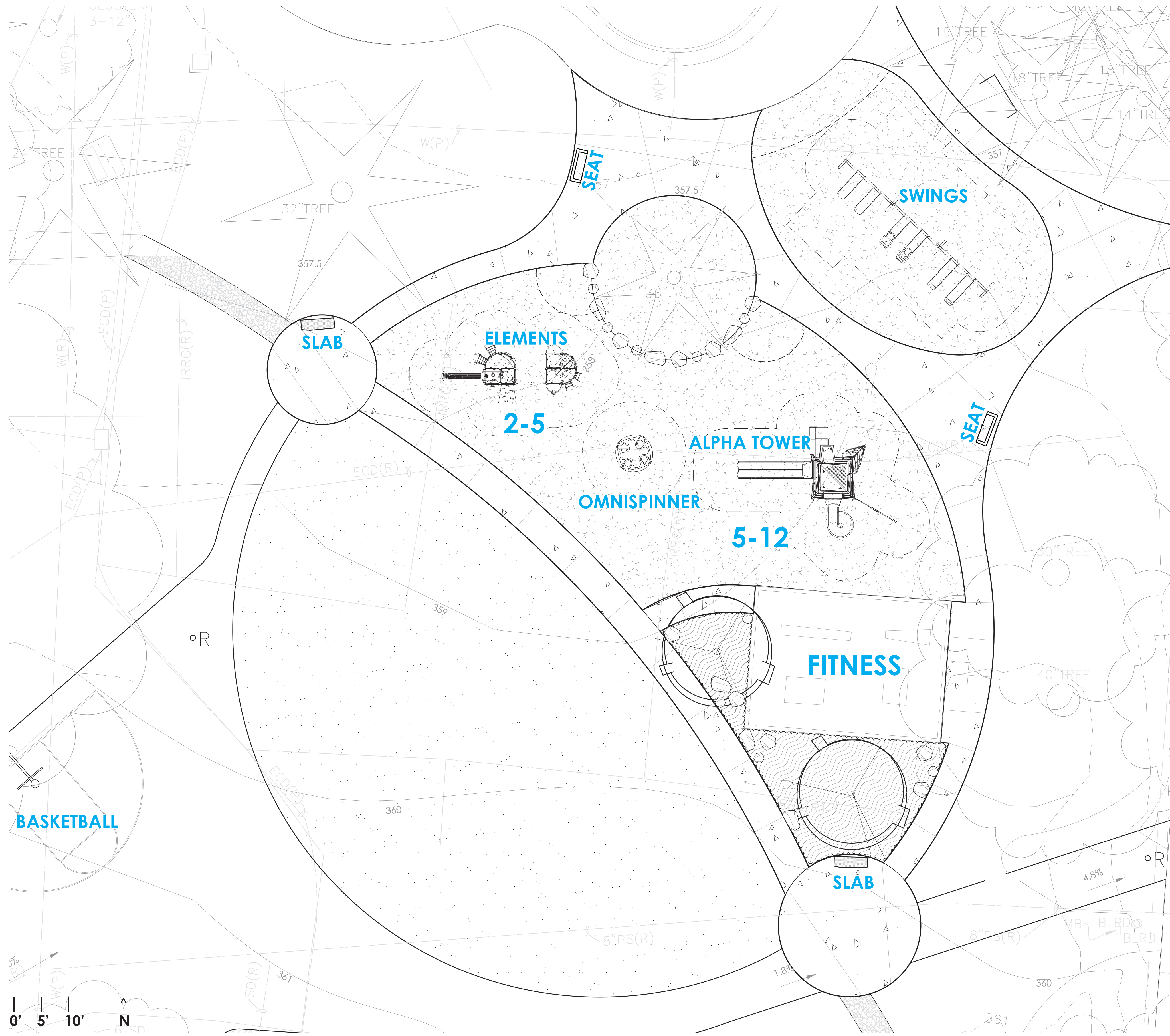
GRANITE STONE SLAB

GRANITE BOULDER

REMOVABLE BOLLARD

EXISTING LIGHT POLE

PARK BENCH



**OMNISPINNER
LANDSCAPE STRUCTURES 2-5**



**ELEMENTS
KOMPAN 2-5**



**ALPHA TOWER
LANDSCAPE STRUCTURES 5-12**



SWINGS 5\"/>



BASKETBALL



SEAT - OLMSTED BENCH



SLAB - GRANITE SLAB



2018 Olmsted Parks Study

- reference geometry of original 1910 pathways
- reference original planting plans
- improve accessibility

Friends of Seattle Olmsted Parks

- December 2019 review
- March 2020 review
- July 2020 review

0 40 N 2018 Olmsted Parks Study



First exchange:

Then (Olmsted History)

- People were familiar with the history of the park
- People loved the old 25-foot high play equipment!

Setting up the frame (Site Study)

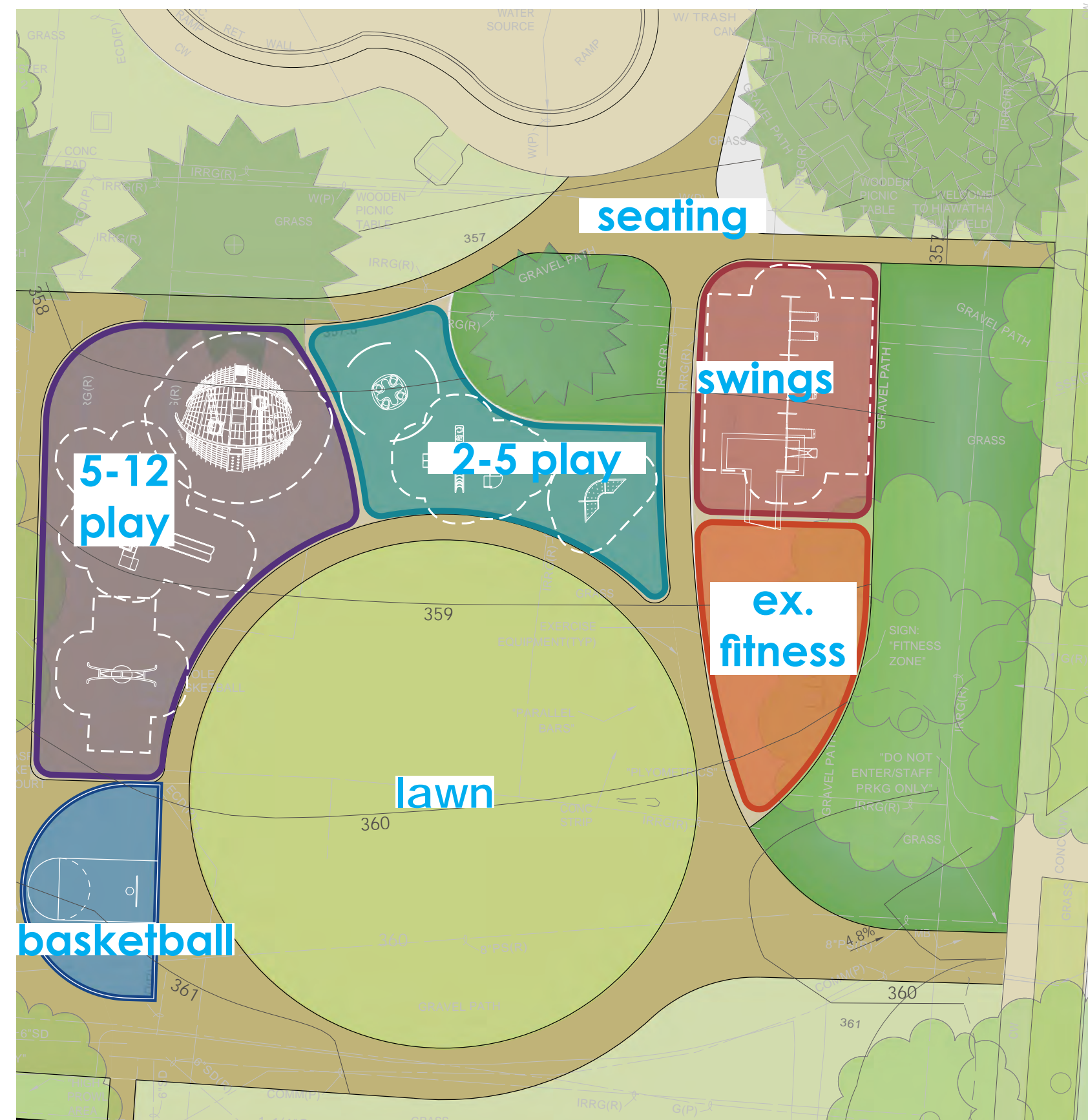
- Some were happy to get out into the sun
- People were concerned to fill up the lawn with play area
- Not many comments about removing fitness equipment
- Few comments about removing the existing swings

Play (Options)

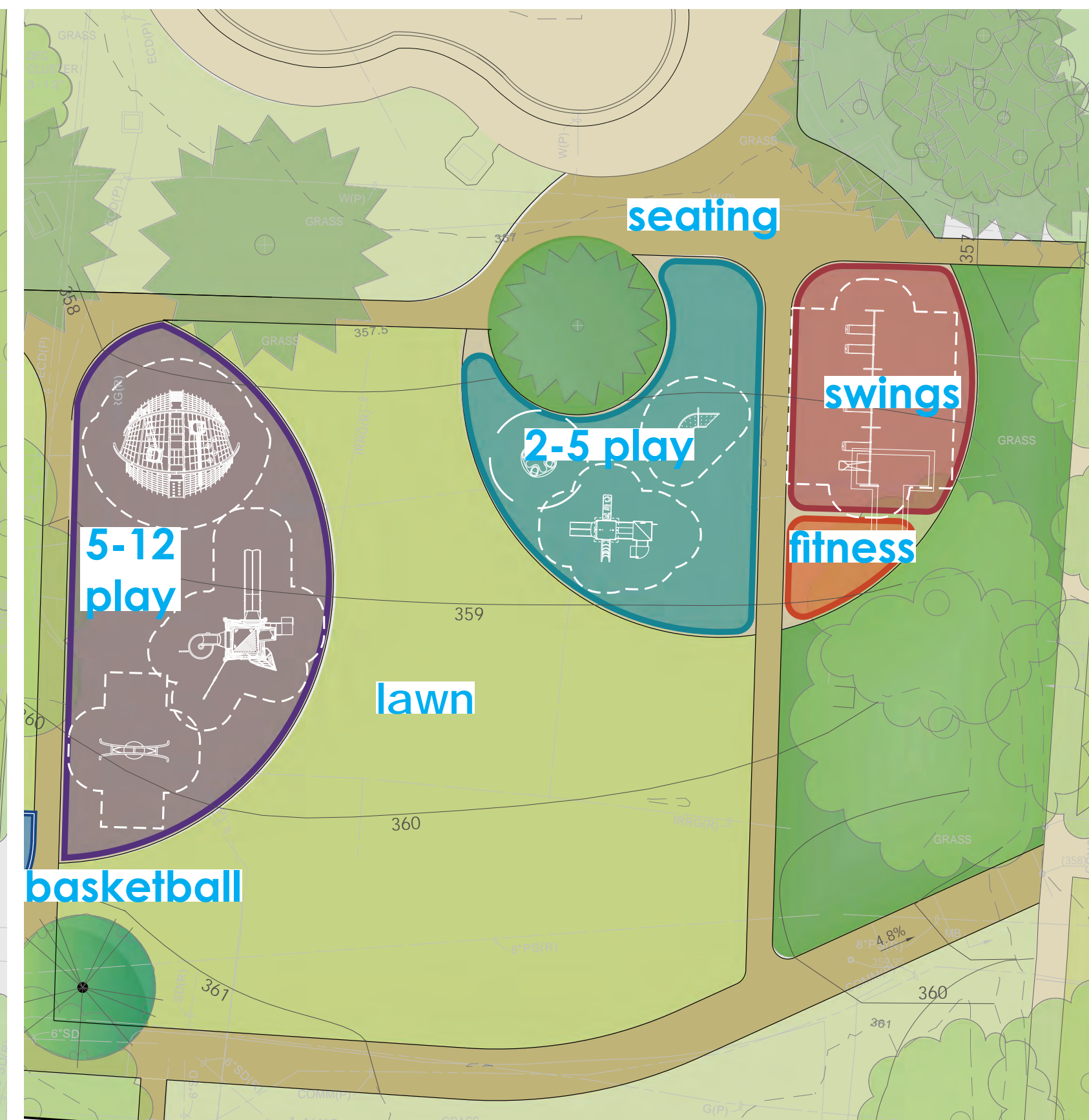
- Lots of parents preferring fewer colors, fewer plastic items, more metal equipment
- Many comments supporting nature play
- Support for tall towers, element of danger
- All slides supported
- Net climbers supported
- Climbing pieces, the taller the better, i.e. element of danger!
- Classic swings were easy
- Support for unique items – the art play piece was popular
- Comment to have music



scheme a



scheme b



scheme c

Second exchange:

- 2/27 Tot Time, 25+ tots, 25+ parents
- 2/27 evening open house
- West Seattle Blog write up
- Friends of Seattle Olmsted Parks
- Online Survey

