



Aki Kurose Middle School

3928 S Graham Street

Seattle Landmarks Preservation Board

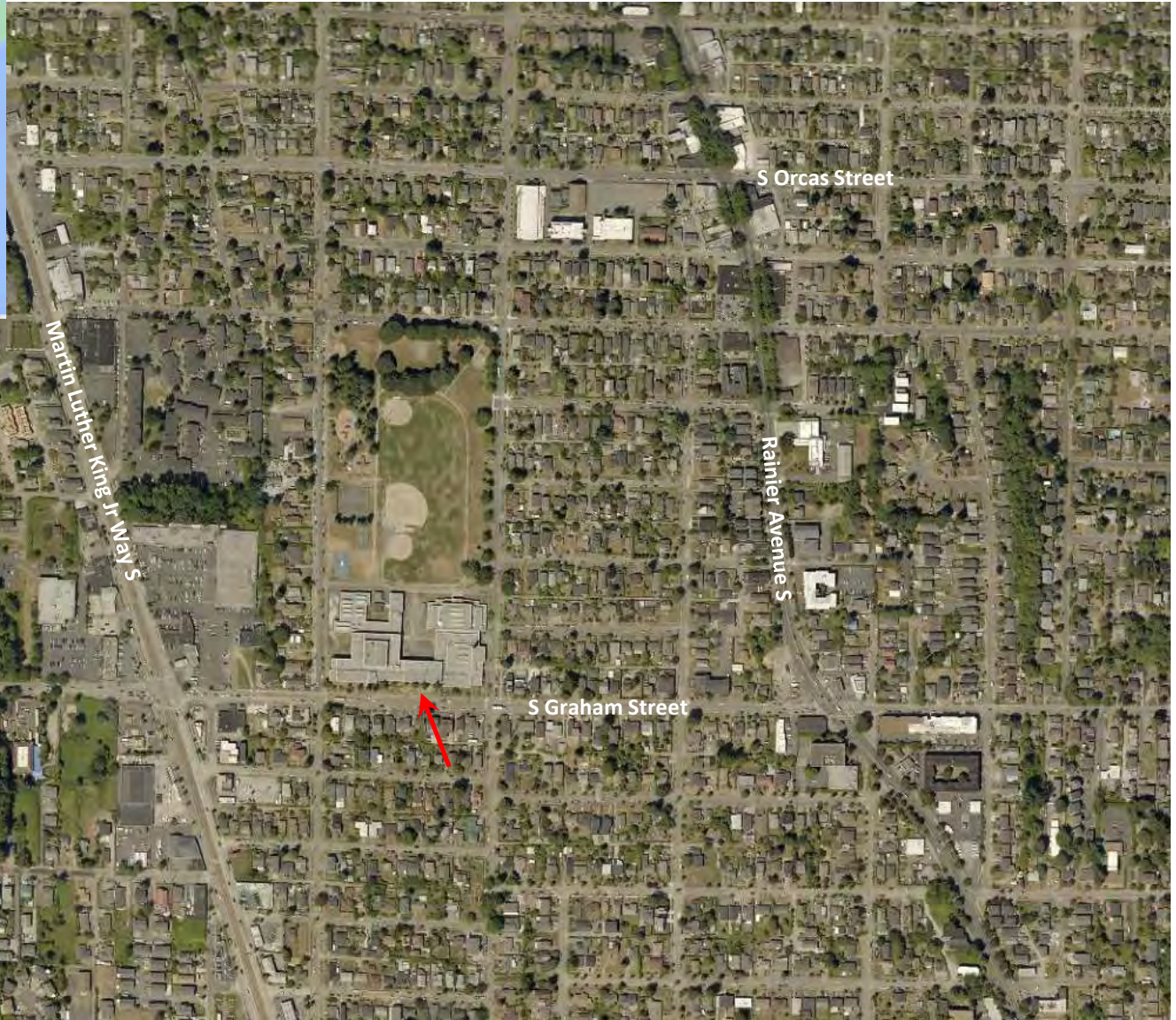
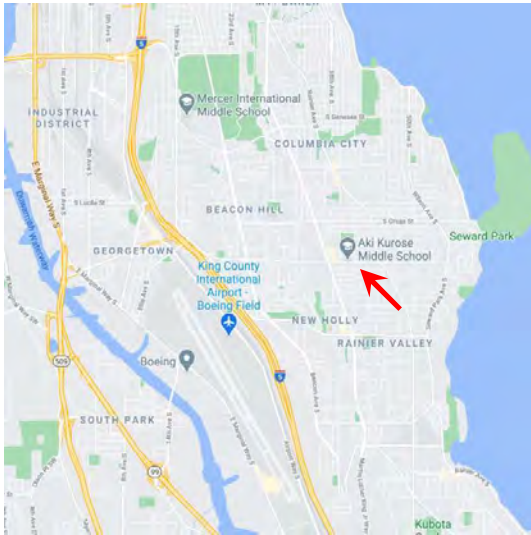
Designation meeting

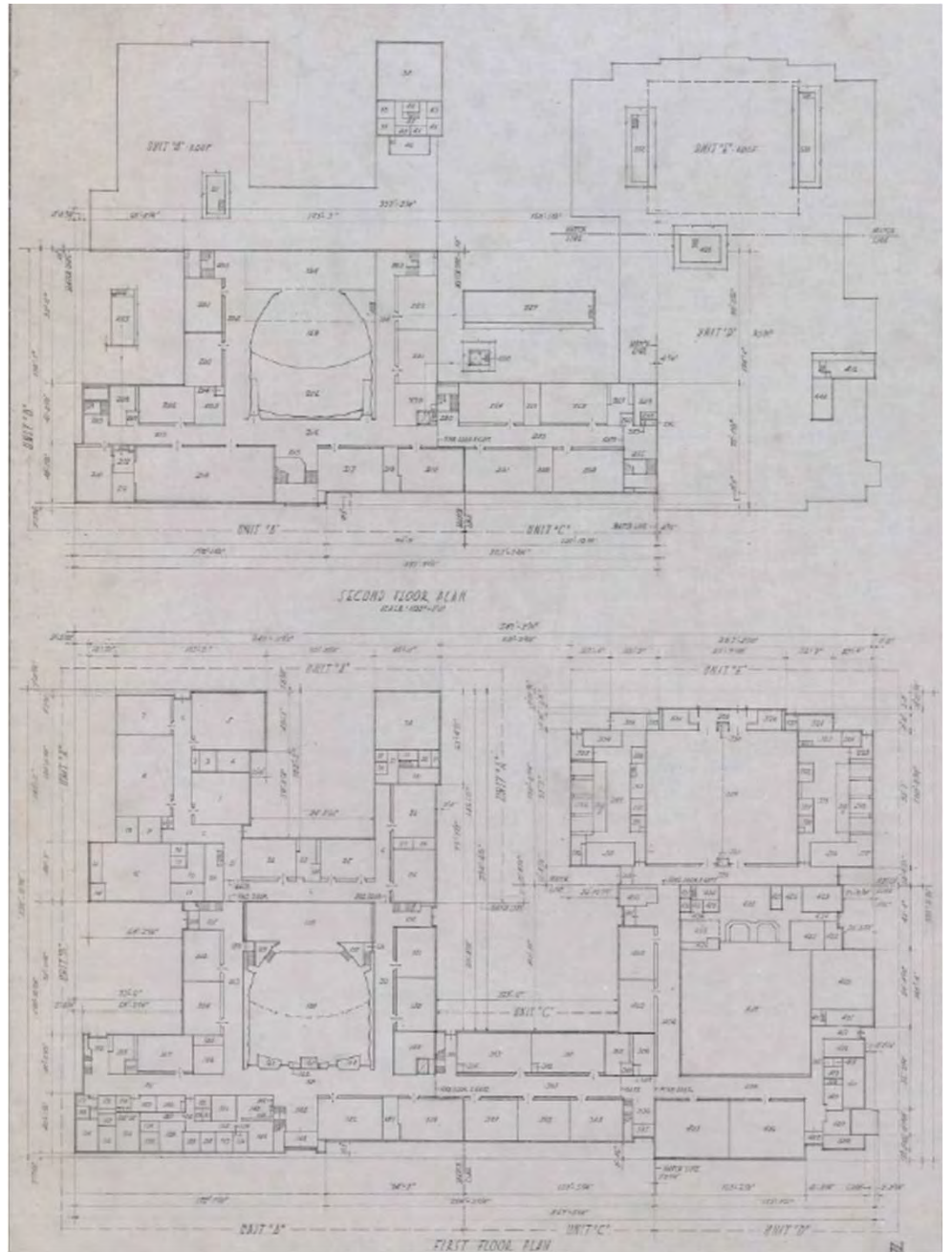
June 16, 2021



David Peterson historic resource consulting
PO Box 115 Seattle WA 98111 P:206-376-7761 david@dphrc.com

BOLA Architecture + Planning
Seattle





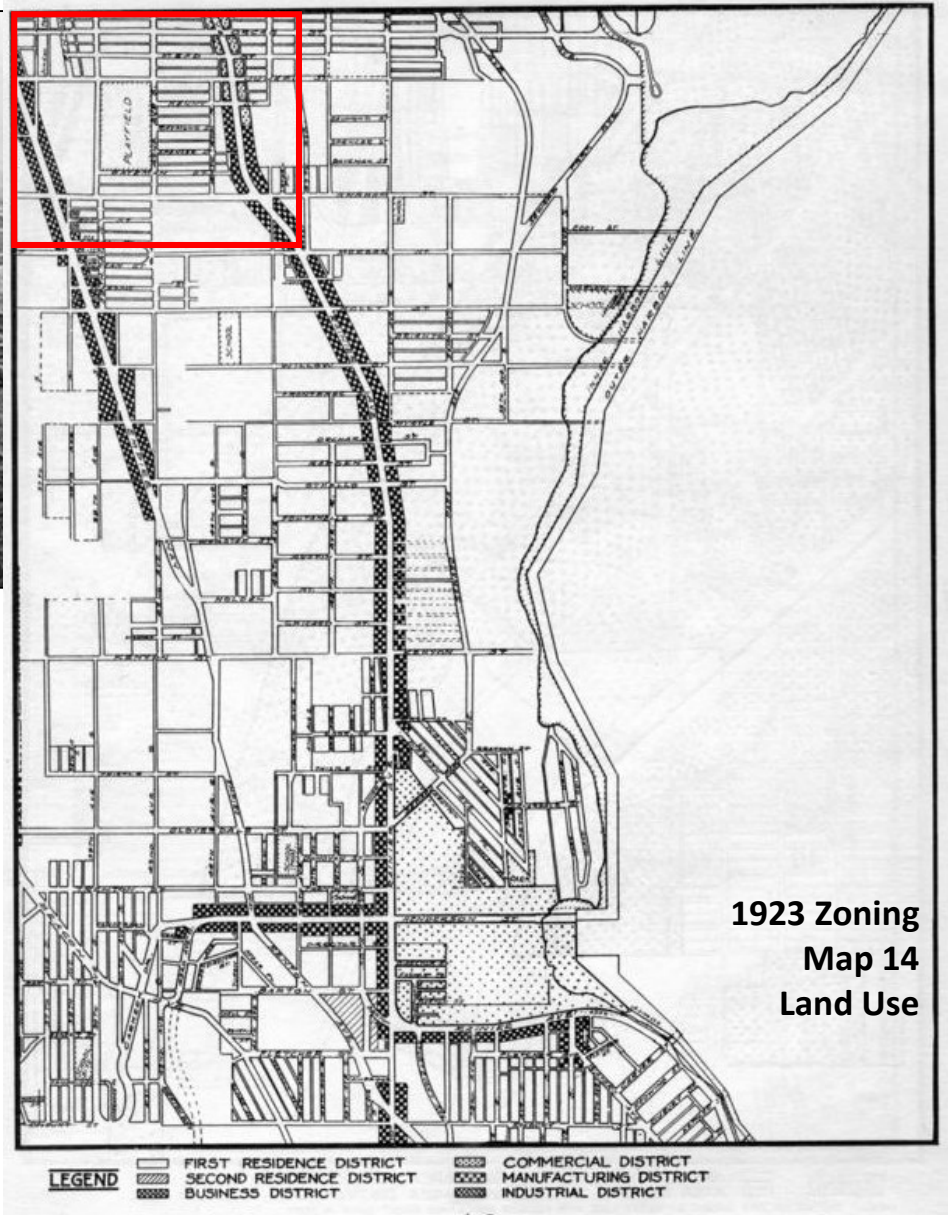
Hillman City

Rainier Avenue S
Empire Way S / Martin Luther
King Jr. Way S



MLK Jr Way S/Empire Way S

Rainier Avenue S



1960s





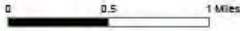
Aki Kurose Middle School Attendance Area



School Service Area



- Attendance Area
- Walk Zone
- E Elementary
- E Option Elementary
- H High
- H Option High
- M Middle
- S Service School



Map last revised: 2/8/2021



ca. 1952



ca. 1968

Demographic Changes in the Community and the School

Census Tract 3	Total Pop.	White	Black	Asian	Hispanic /Latino	Native Amer.	Pacific Islander	Multiracial & Other
1940 (*)	6,438	98%						
1950	4,507	97%	2%	1%				
1960	4,759	95%	1%	4%				
1970	5,447	79%	9%	10%	<1%	1%		
1980	5,205	41%	37%	17%		2%		4%
1990	5,363	28%	43%	25%	2%			2%
2000	6,178	24%	32%	30%	7%	1%	1%	12%
2010	5,940	36%	27%	17%	9%	<1%	<1%	10%

Architect William Mallis

Maple Leaf Elementary (1926)



Edmonds High School Addition (1939)



Renton High School (1931)



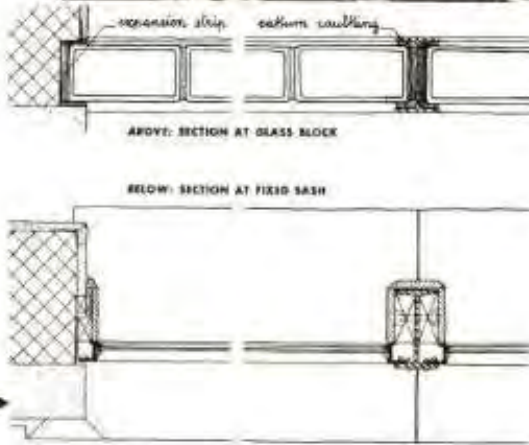
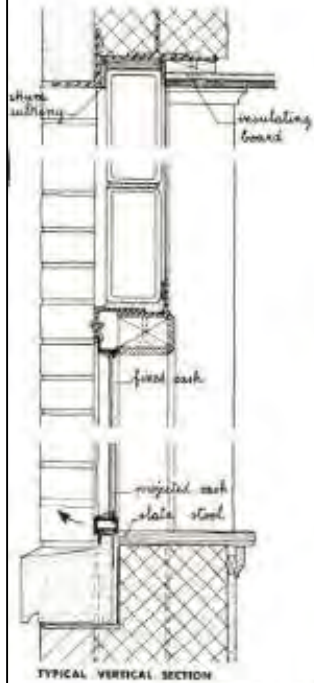
View Ridge Elementary (1948)



**BLOCK BENDS LIGHT
TO REACH BACK WALL**

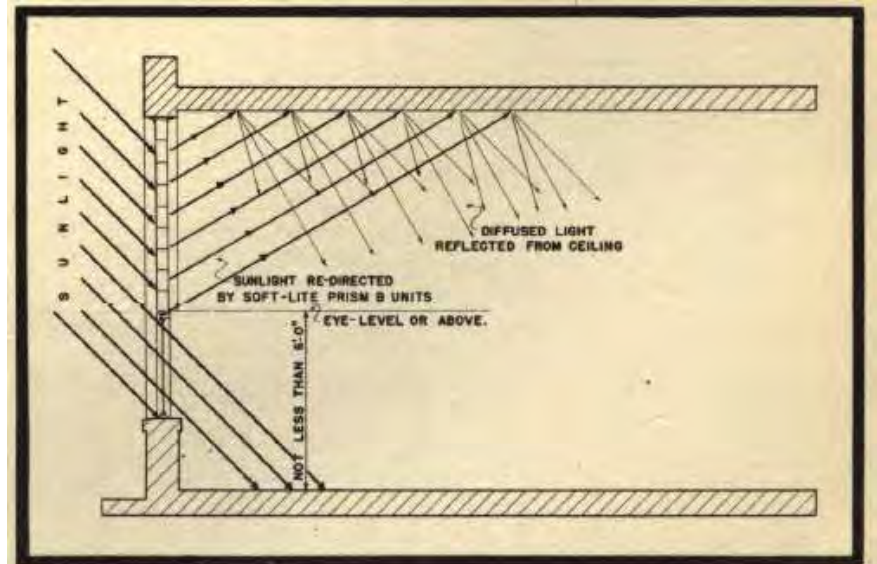
In a multi-story school building where the classrooms can be lighted from one side only, it has always been difficult to provide even illumination in all parts of the room. Prismatic glass blocks in the upper half of the window wall diffuse the light and bend it upward, throwing it further toward the back wall. A clear vision strip below the blocks allows the eye a necessary change of focus. The construction details shown are now standard.

Sketches: Kensington High School, Md. Architect: Bliss E. Barton; master plan: Oakdale Christian School, Grand Rapids, Mich. Architect: J. K. Haveman.



TYPICAL VERTICAL SECTION
TYPICAL HORIZONTAL SECTION
SCALE: 1/4" = 1'-0"

“Prismatic” glass block



This diagram shows typical light paths into a room from a panel of PC Soft-Lite Prism B Glass Blocks. Incident daylight is diverted to a wide area of reflecting ceiling, whence it is distributed evenly over large areas.

Pittsburgh Corning Corporation catalog (1949)

Windows in Modern Architecture (1948),
by Geoffrey Baker & Bruno Funaro



Lincoln Elementary, Ellensburg WA (1948)

Architect William Mallis



David Denny Junior High (1952, demolished)



Nathan Eckstein Junior High (1950)



Nathan Eckstein Junior High (1950)



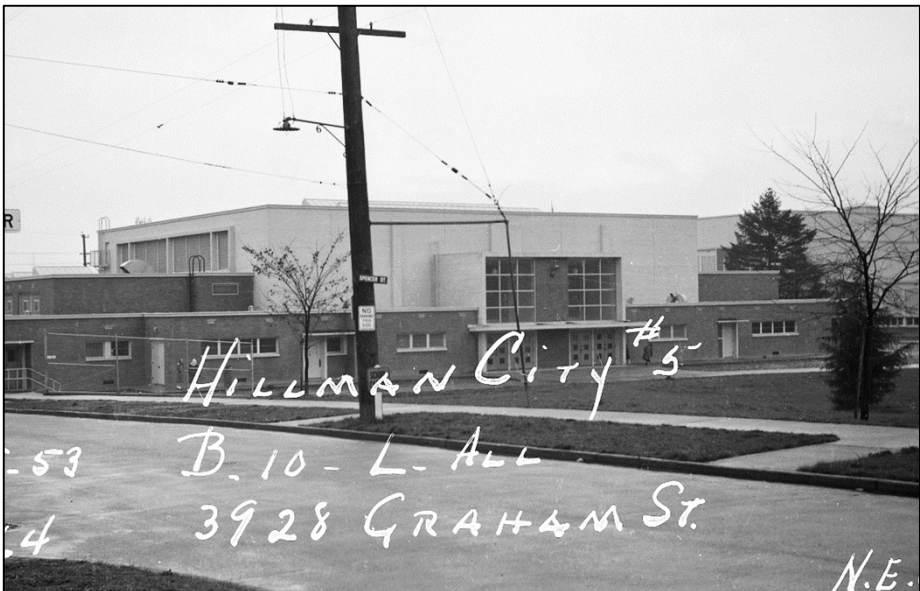
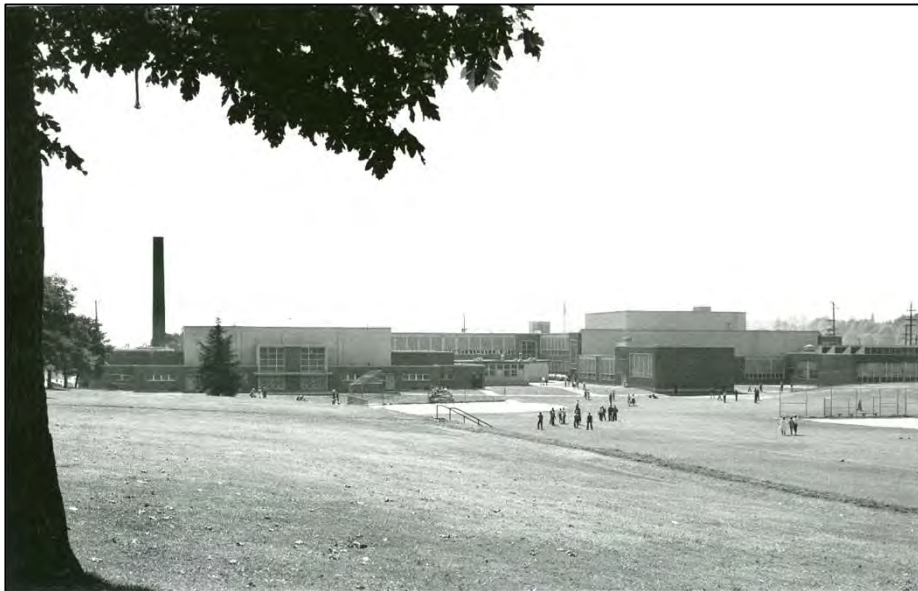
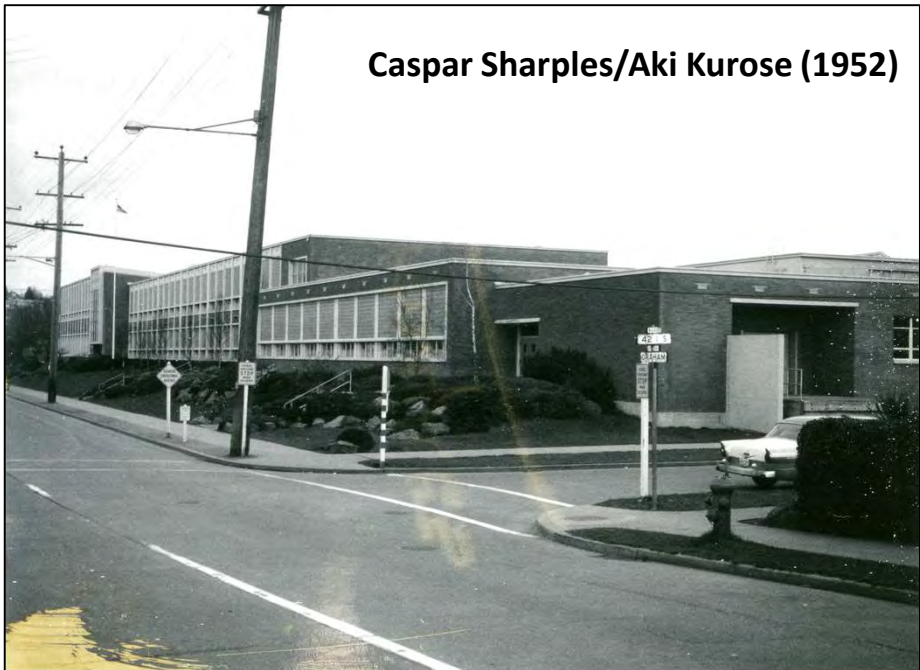
Nathan Eckstein
Junior High (1950)



Architect William Mallis

**Caspar W. Sharples Junior High (1952)
(renamed Aki Kurose Middle School in 1999)**





Caspar Sharples/Aki Kurose (1952)



Typical specialty classroom 1952



Gymnasium 1952



Typical classroom 1952



Library 1952





Auditorium 1952



Auditorium 1952



Typical corridor 1952



Cafeteria 1952



Brighton Park/Playfield – View south to school



Neighborhood context



Neighborhood context



Main or south facade (S Graham Street)







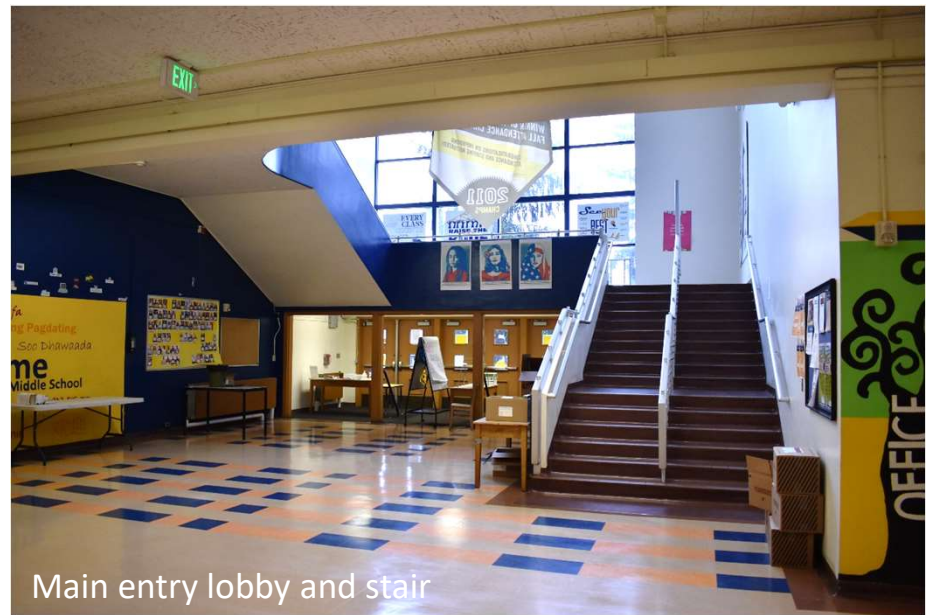












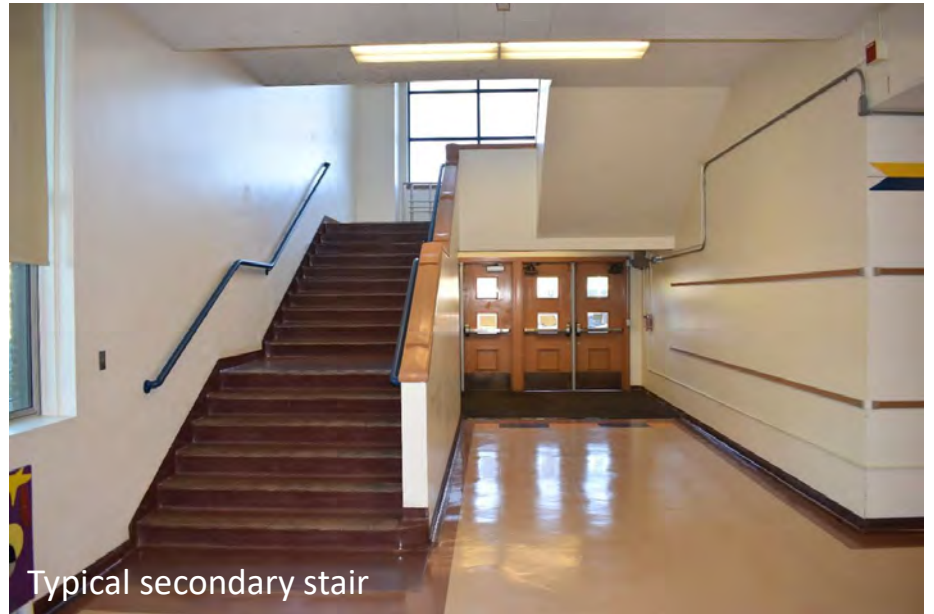
Main entry lobby and stair



Main entry



Auditorium



Typical secondary stair



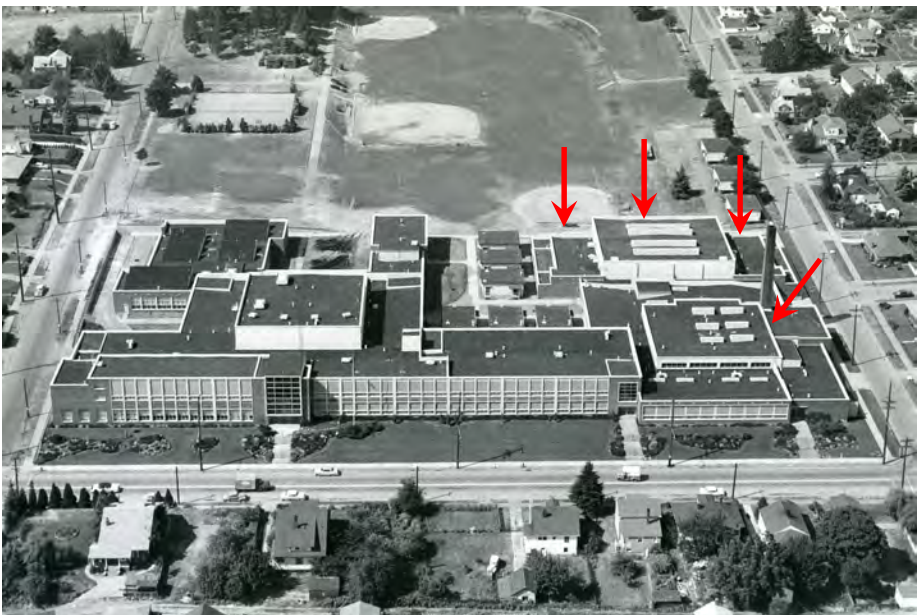
Auditorium



Typical corridor



Cafeteria



Gymnasium



Locker Rooms flanking gym



Typical art/shop classroom



Orchestra classroom



Classroom with original glass block windows



Classroom with original glass block windows



Typical classroom with updated windows

Library



Administrative Offices



Former classroom at east end of south facade





2021



1950s



2021



1950s



2021



1950s



Standards of designation:

An object, site, or improvement which is more than twenty-five (25) years old may be designated for preservation as a landmark site or landmark if it has significant character, interest or value as part of the development, heritage or cultural characteristics of the City, state, or nation, if it has integrity or the ability to convey its significance, and if it falls into one (1) of the following categories:

Criterion A.

It is the location of, or is associated in a significant way with, an historic event with a significant effect upon the community, City, state, or nation.

Criterion B.

It is associated in a significant way with the life of a person important in the history of the City, state, or nation.

Criterion C.

It is associated in a significant way with a significant aspect of the cultural, political, or economic heritage of the community, City, state, or nation.

Criterion D.

It embodies the distinctive visible characteristics of an architectural style, or period, or method of construction.

Criterion E.

It is an outstanding work of a designer or builder.

Criterion F.

Because of its prominence of spatial location, contrasts of siting, age, or scale, it is an easily identifiable visual feature of its neighborhood or the City and contributes to the distinctive quality or identity of such neighborhood or the City.