

Seattle Public Utilities Urban Forestry Work

Jana Dilley

7-19-23



SPU Urban Forestry Work



Management of SPU Owned Lands



Trees for Neighborhoods & Seattle Tree Stewards



Green Stormwater Infrastructure



Capital Projects Planting

Management of SPU Owned Lands



Urban Watersheds Team

- Manages over 150 sites
- Maintains and restores habitat to protect water quality and salmon habitat
- Focuses resources in equity priority areas
- Partners with community



North Fork, Thornton Creek

Before



After



Challenges



- Beavers
- Steep slopes & erosion control
- Limited staff time
- Early engagement with capital projects
- Seed spread from private property
- Climate change



Volunteer Stewardship



Trees for Neighborhoods and Seattle Tree Stewards





Green Stormwater Infrastructure



HOW HIGH POINT DRAINAGE WORKS TO RECHARGE OUR GROUNDWATER AND PROTECT THE CREEK

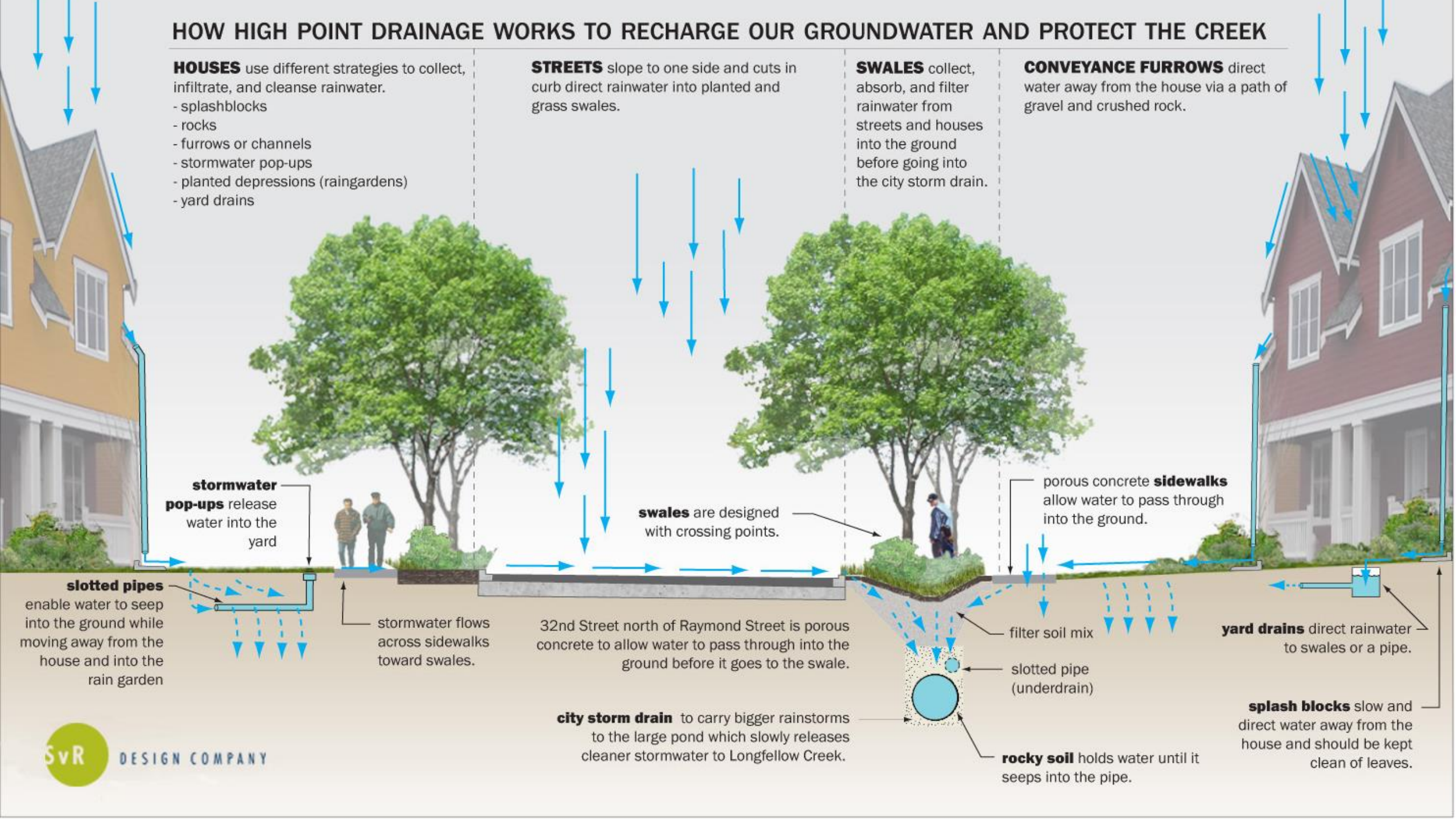
HOUSES use different strategies to collect, infiltrate, and cleanse rainwater.

- splashblocks
- rocks
- furrows or channels
- stormwater pop-ups
- planted depressions (raingardens)
- yard drains

STREETS slope to one side and cuts in curb direct rainwater into planted and grass swales.

SWALES collect, absorb, and filter rainwater from streets and houses into the ground before going into the city storm drain.

CONVEYANCE FURROWS direct water away from the house via a path of gravel and crushed rock.



stormwater pop-ups release water into the yard

slotted pipes enable water to seep into the ground while moving away from the house and into the rain garden

stormwater flows across sidewalks toward swales.

swales are designed with crossing points.

32nd Street north of Raymond Street is porous concrete to allow water to pass through into the ground before it goes to the swale.

city storm drain to carry bigger rainstorms to the large pond which slowly releases cleaner stormwater to Longfellow Creek.

porous concrete **sidewalks** allow water to pass through into the ground.

filter soil mix

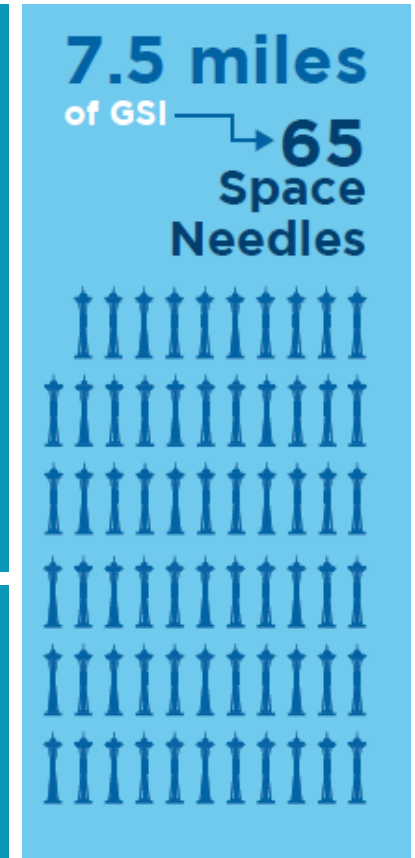
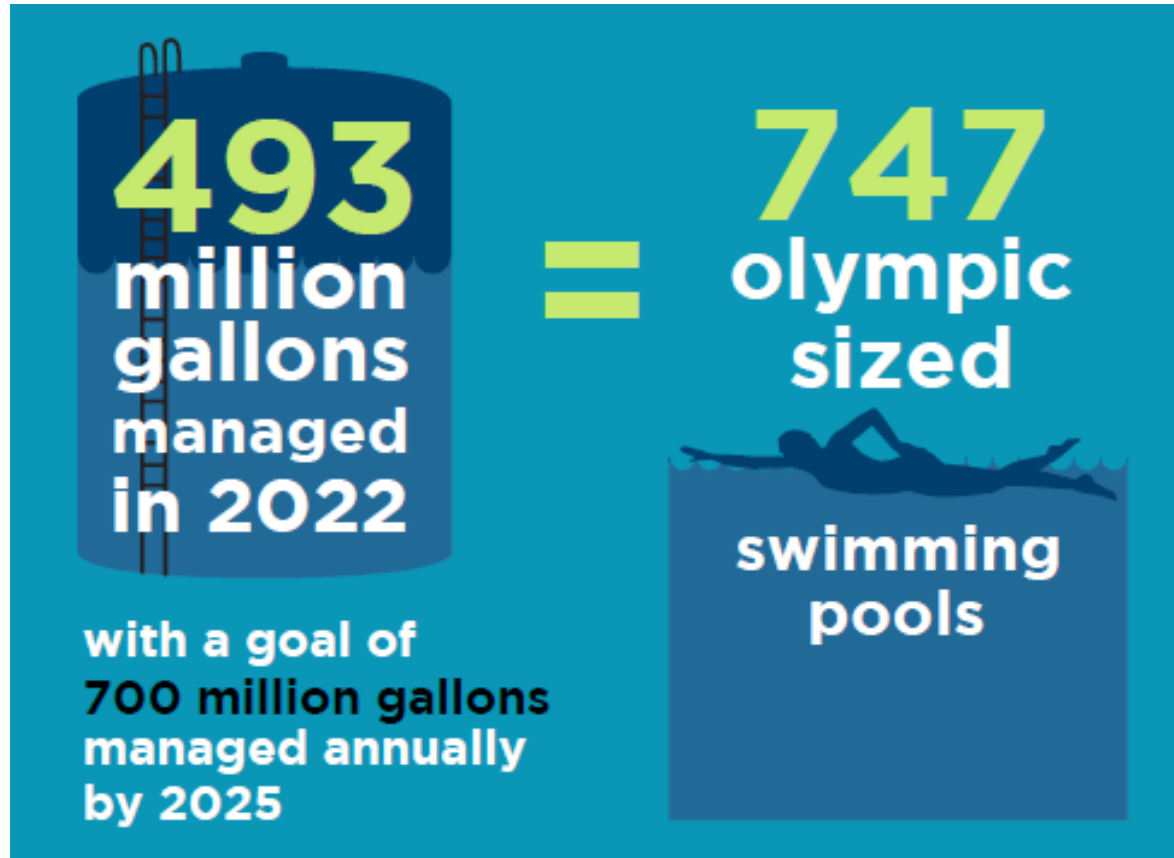
slotted pipe (underdrain)

rocky soil holds water until it seeps into the pipe.

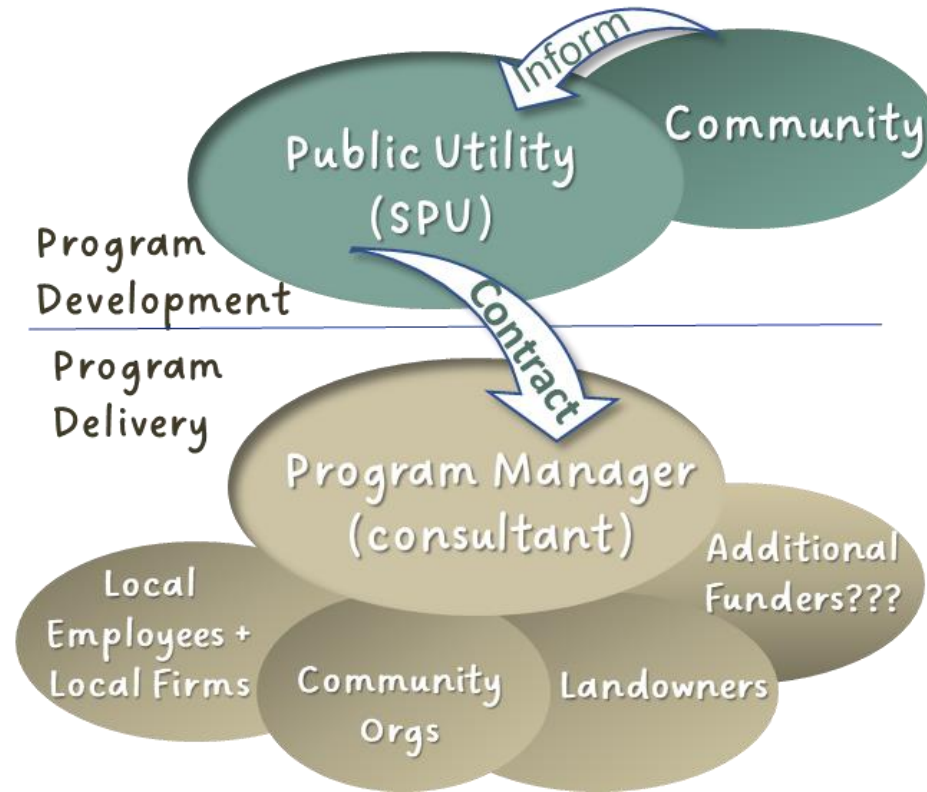
yard drains direct rainwater to swales or a pipe.

splash blocks slow and direct water away from the house and should be kept clean of leaves.

2022 GSI Accomplishments



RainCity Partnerships Program



Vision

Less flooding, sewer overflows, creek flashiness and more riparian habitat, groundwater recharge, and climate resiliency

Future job and entrepreneurial opportunities, community spaces, green spaces

RainCity's stormwater management supports **community health** by integrating the natural environment into the built environment.

More green space, reduced urban heat islands, beneficial wildlife habitat.



Green Schoolyards



Capital Projects Planting



Capital Projects Planting

- Trees planted as part of construction projects
- Compliance with tree replacement requirements
- Partnership with SDOT when planting street trees
- Planting levels vary based on project needs



Questions?

