

# Right of Way Tree Canopy Cover

Follow-up Report<sup>1</sup> with The 2021 Data

The Urban Forestry Commission

August 2, 2023

1. The prior report was presented during the UFC meeting held on June 7th, 2023.

# Data

## Source

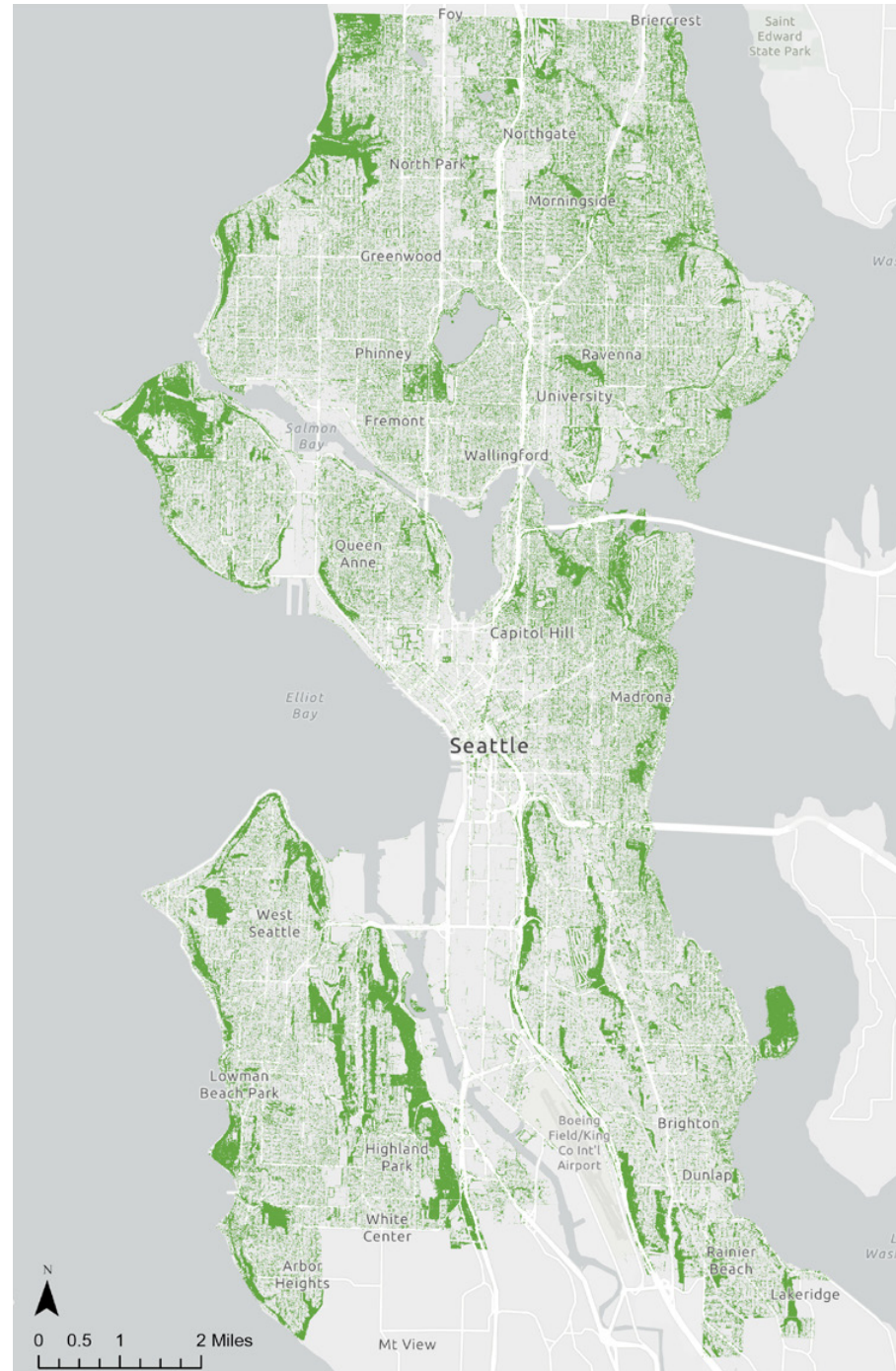
- City of Seattle<sup>1</sup>

## Consistency & Validity

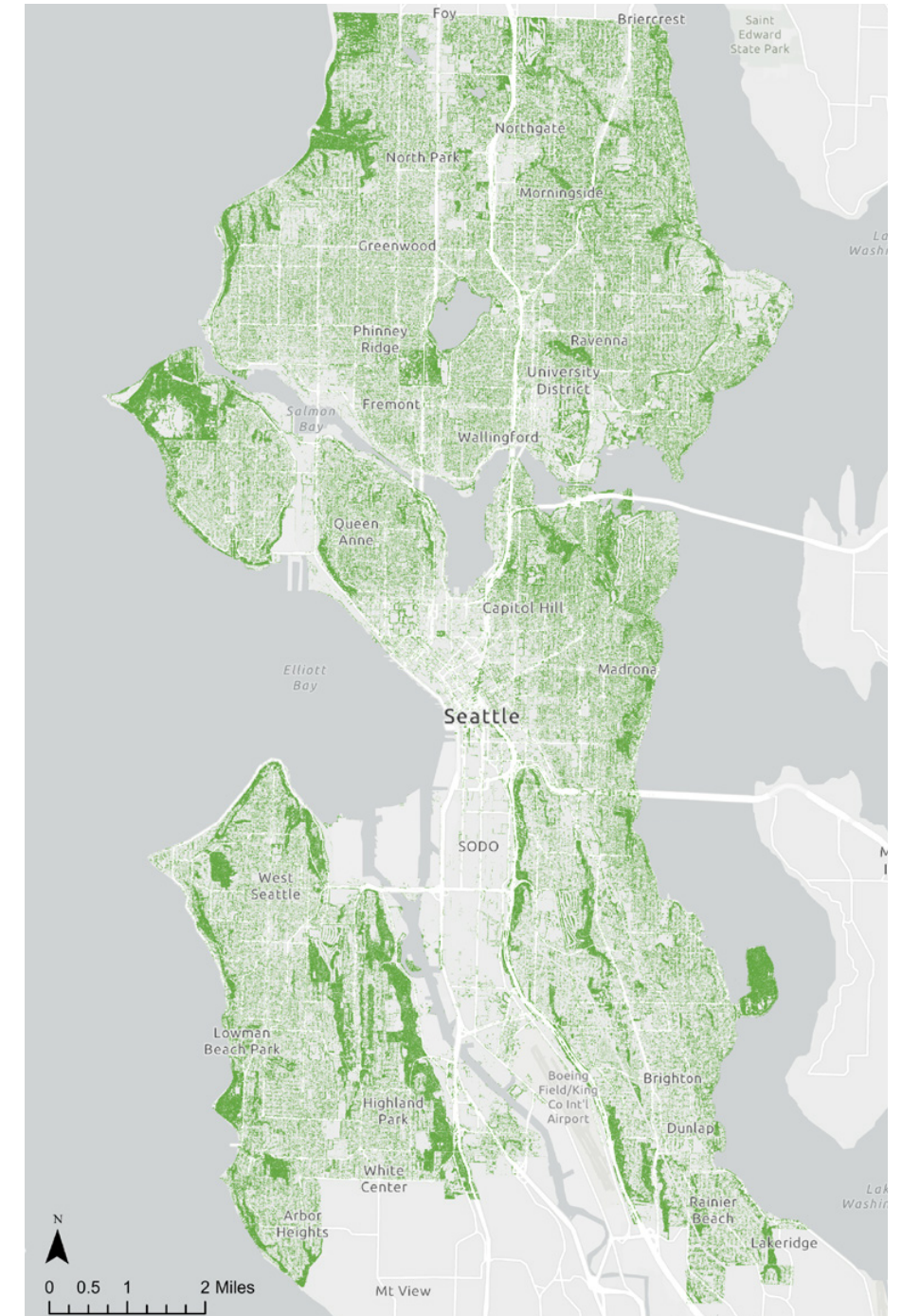
- Based on the 2021 Tree Canopy Assessment Report<sup>2</sup>, the city had **15,279** acres tree canopy cover in 2016 and **15,024** acres in 2021<sup>3</sup>.
- Based on the data<sup>1</sup> used in this report, the city had **15,211** acres tree canopy cover in 2016 and **14,995** acres in 2021.
- **53,428** acres is used as the city's total area.

	Numbers from 2021 Tree Canopy Assessment Report	Numbers from the data used in this report
2016 Acres (%)	15,279 (28.60%)	15,211 (28.47%)
2021 Acres (%)	15,024 (28.12%)	14,995 (28.07%)

- The variance in numbers above is insignificant within the scope of this report, applying no perceptible impact on the overall findings<sup>4</sup>.



Tree Canopy Cover 2016



Tree Canopy Cover 2021

1. <https://data-seattlecitygis.opendata.arcgis.com/>

2. [https://seattle.gov/documents/Departments/OSE/Urban%20Forestry/2021%20Tree%20Canopy%20Assessment%20Report\\_FINAL\\_230227.pdf](https://seattle.gov/documents/Departments/OSE/Urban%20Forestry/2021%20Tree%20Canopy%20Assessment%20Report_FINAL_230227.pdf)

3. [2021 Tree Canopy Assessment Report](#) noted, "The land cover mapping performed for this 2021 canopy assessment was done at a finer resolution due to having higher quality aerial imagery and LiDAR data available. This resulted in an updated determination of the canopy present in 2016."

4. This report does not incorporate any findings or interpret the assessment methodology from the 2021 canopy report.







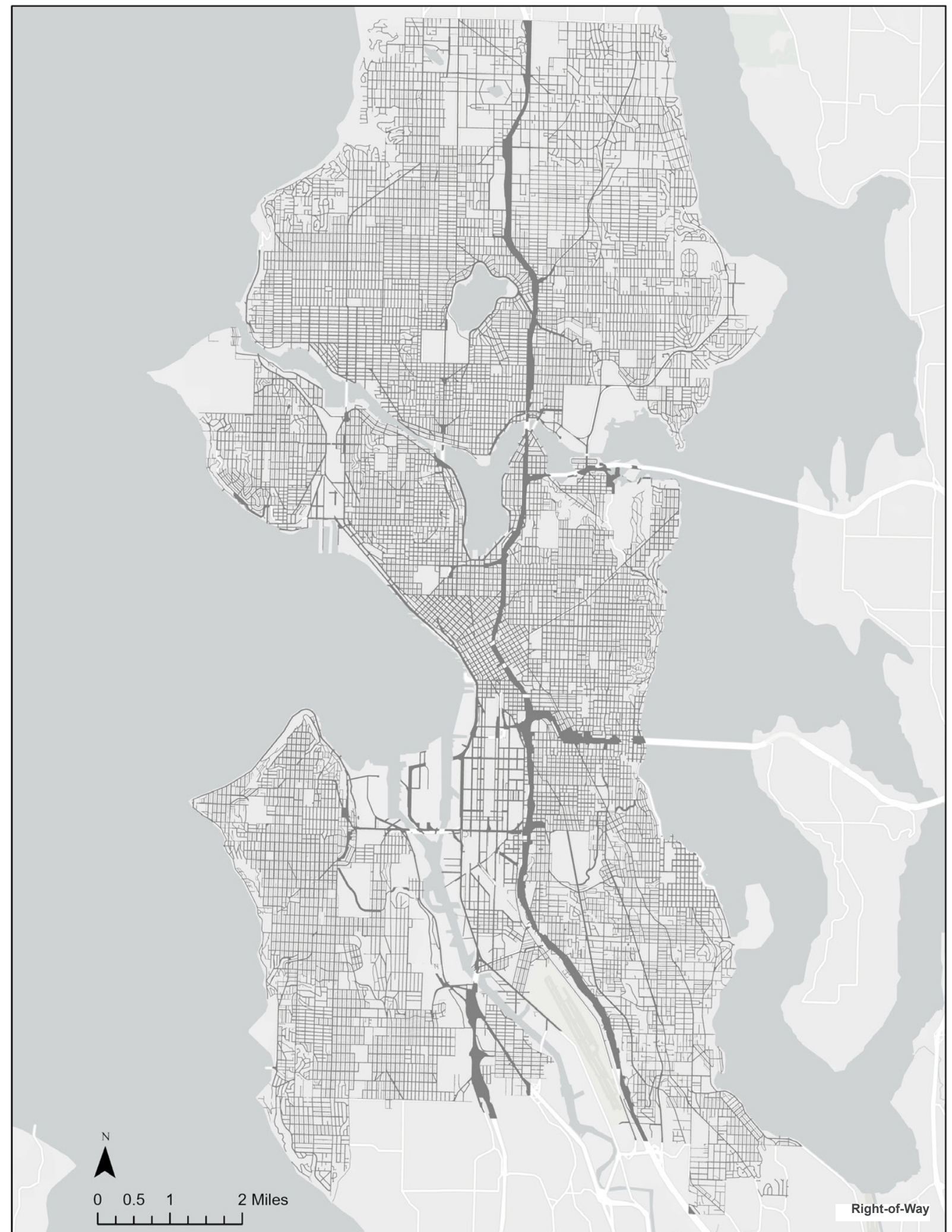


## Right-of-Way (ROW)

**27%**

The Tree Canopy Assessment 2021 identifies the ROW as a management unit, which takes 27% of the city's land area. The ROW plays a crucial role in shaping the city's walkability, connectivity, public health, safety, social interaction, and preservation of natural corridors.

	2016	2021	Change
Acres	3,582.85	3,490.78	- 92.07
% in Total Canopy	23.55%	23.28%	- 0.27%









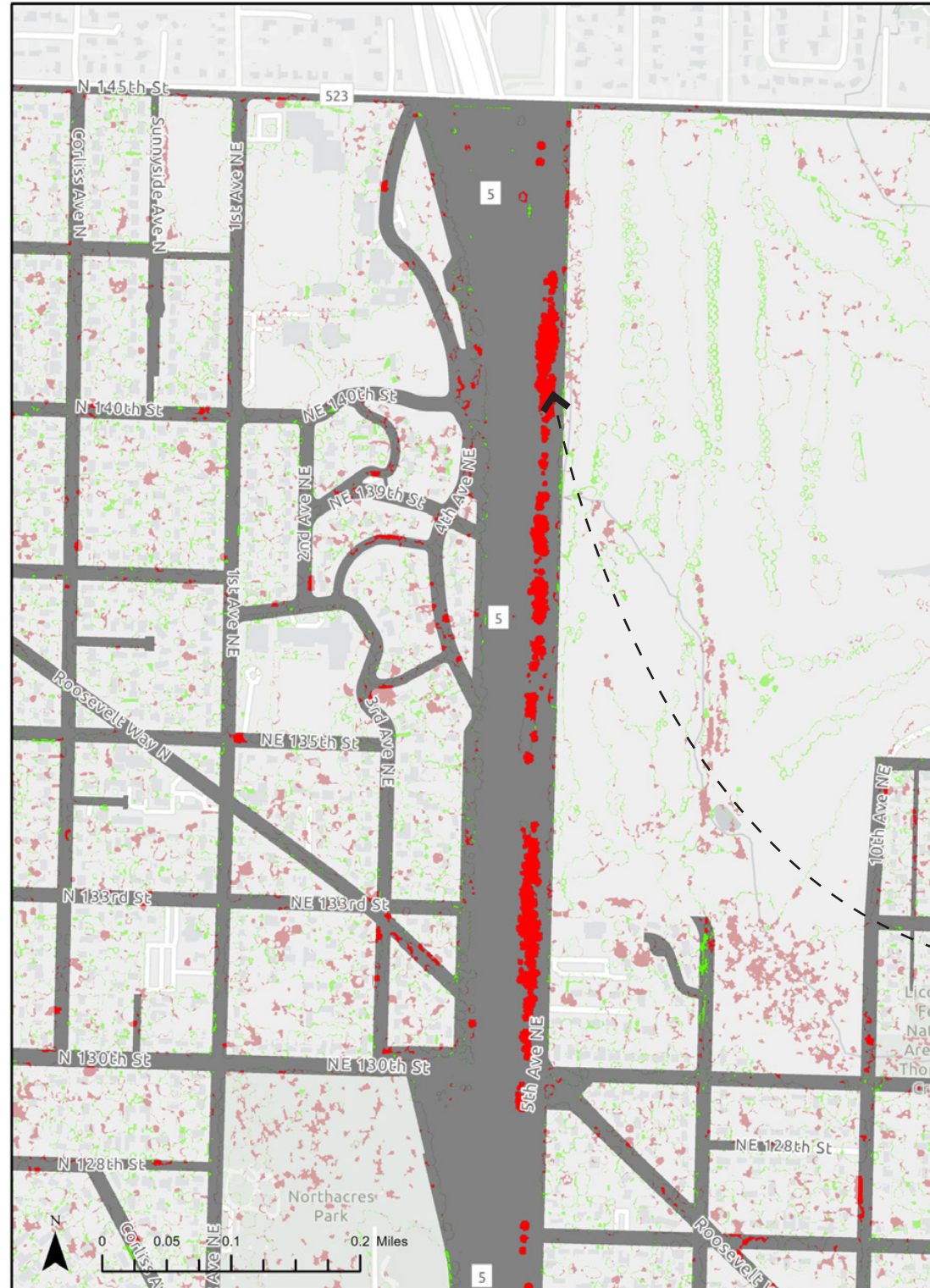


# ROW Canopy Cover Losses

## Interpretation - 1

### Infrastructure Projects

- Construction & Maintenance



Street View 2014



Street View 2019



# ROW Canopy Cover Losses

## Infrastructure Projects

- Restoration



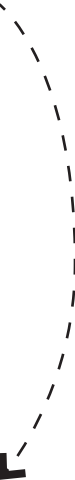
Street View at NE Northgate Way / 1st Ave NE - 2015



Restoration near Lightrail bridge at NE Northgate Way / 1st Ave NE



Street View at NE Northgate Way / 1st Ave NE - 2023





# ROW Canopy Cover Losses

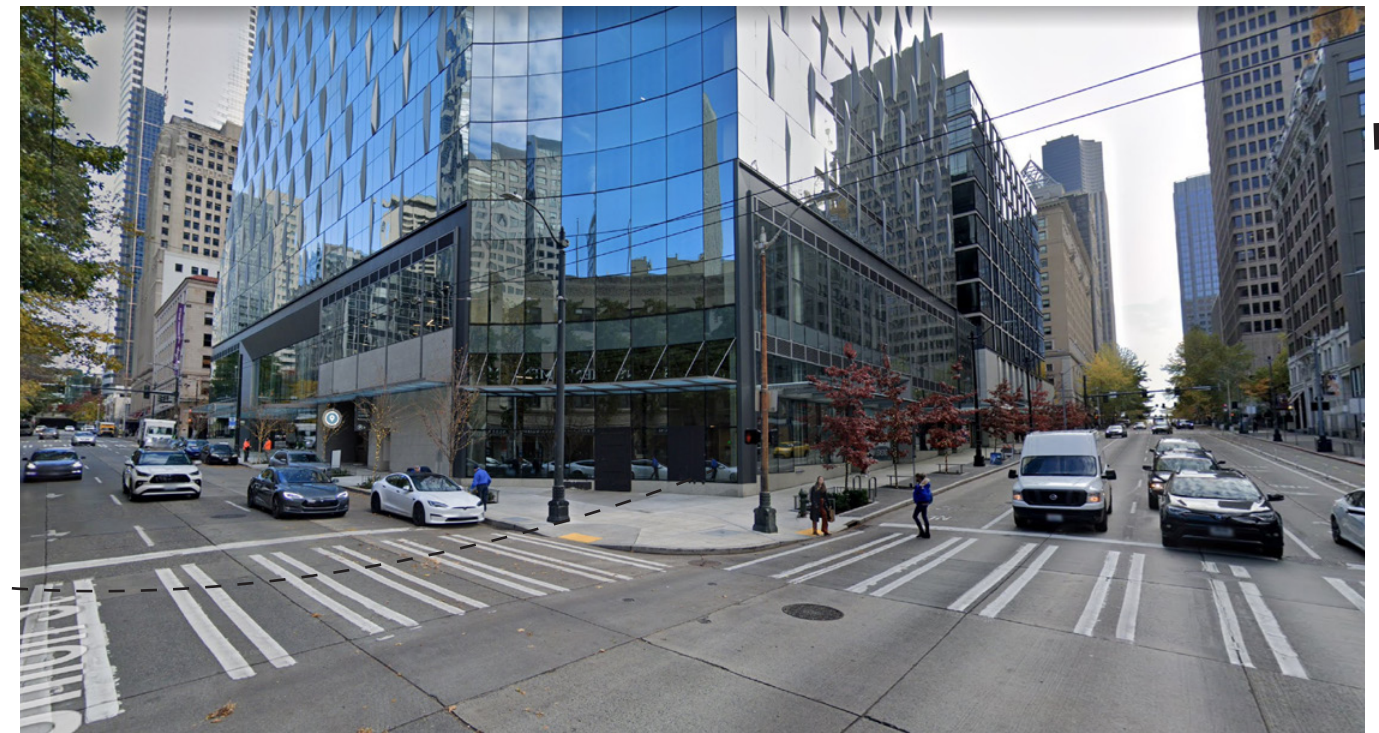
## Interpretation - 2

### Direct Impact

- Development and Construction Activities



Street View 2015



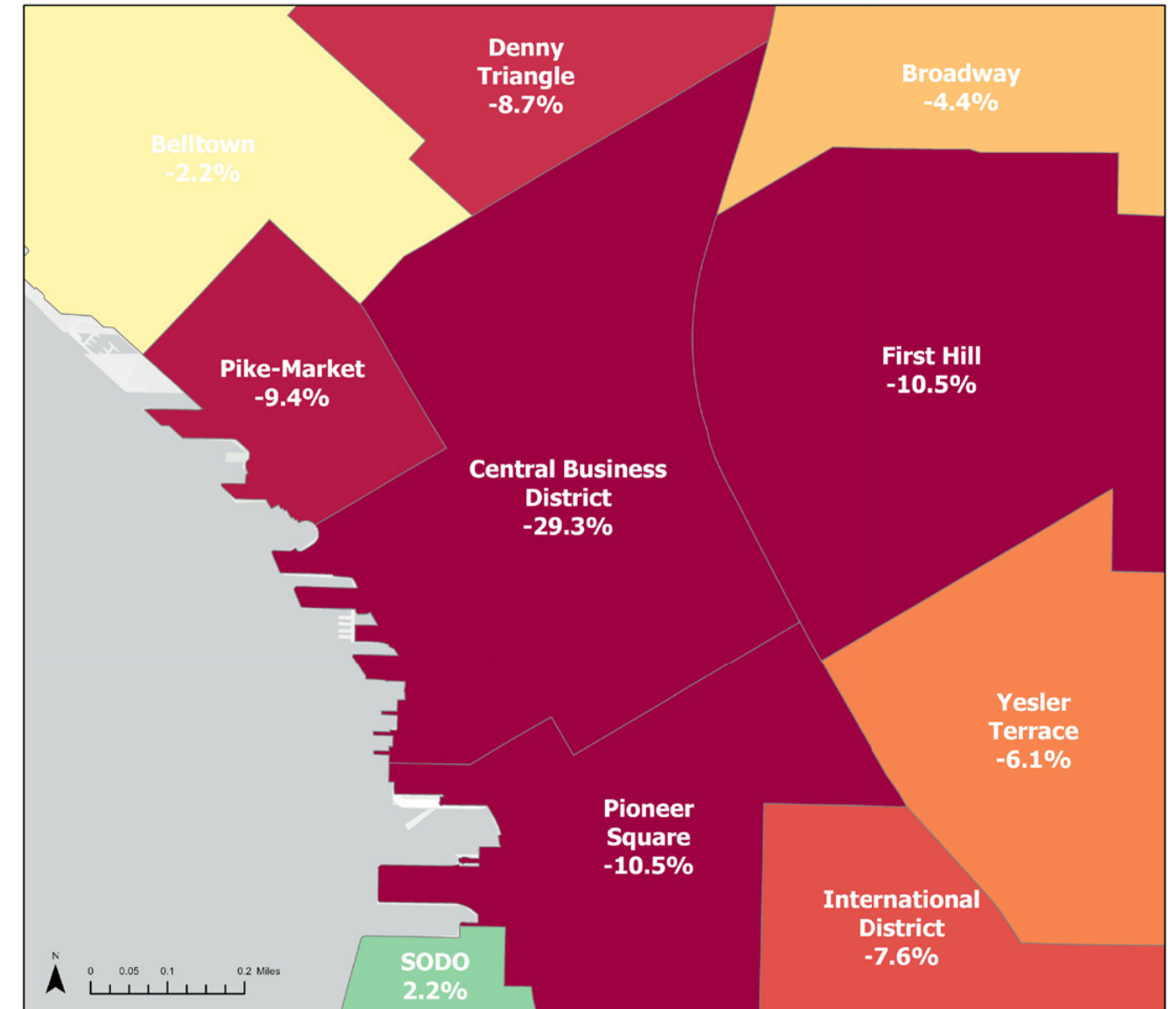
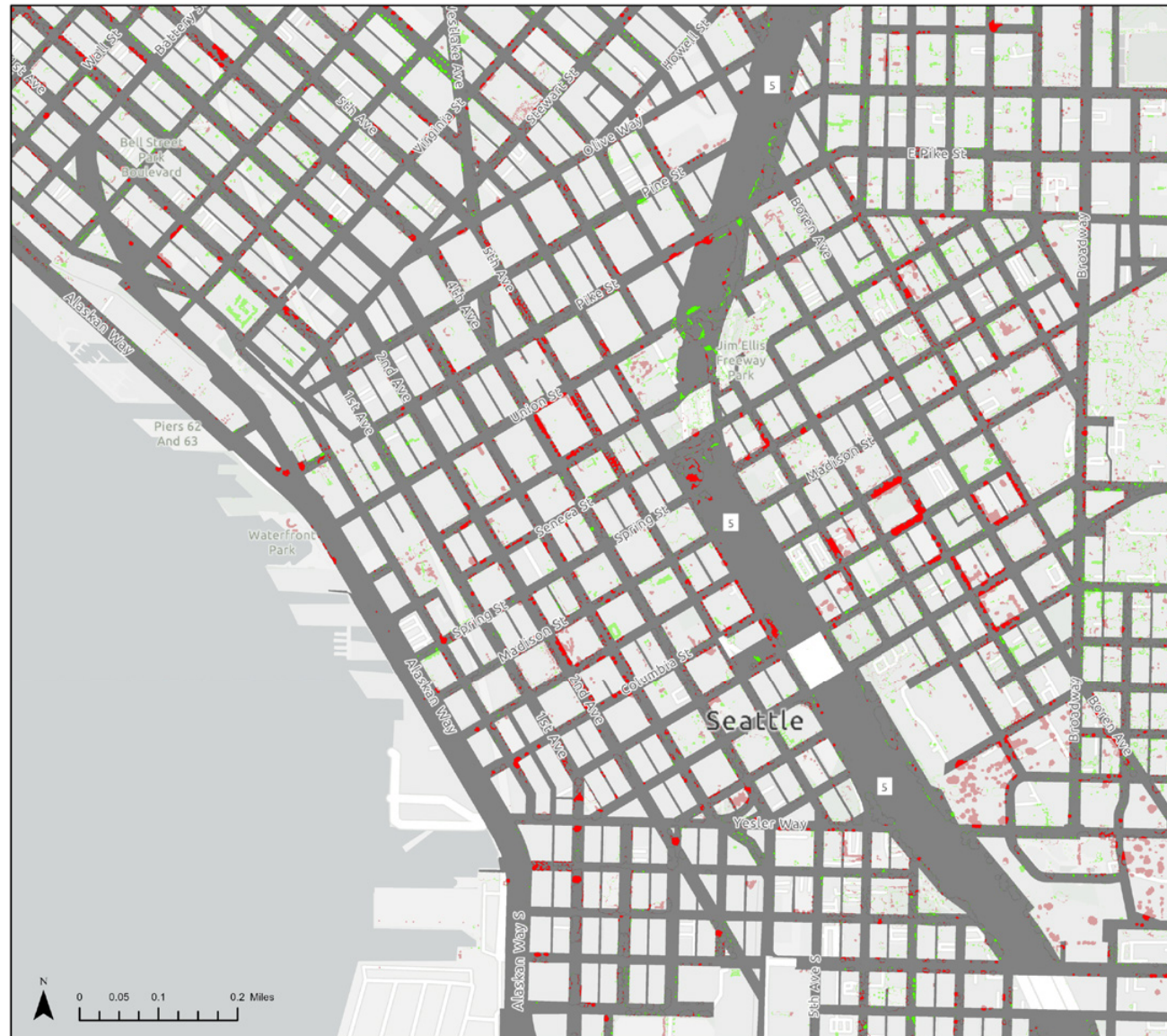
Street View 2022



# ROW Canopy Cover Losses

## Development and Construction Activities

- Downtown



ROW's Canopy Cover Change



# ROW Canopy Cover Losses

## Interpretation - 3

### Indirect Impact

- Development and Construction Activities



Street View 2015



Street View 2021



