

Washington State Convention Center Addition



Transit Advisory Board Meeting

Mark Bandy

March 22, 2017



Seattle
Department of
Transportation

Presentation overview

- City Roles
- Project area and phasing

City Roles

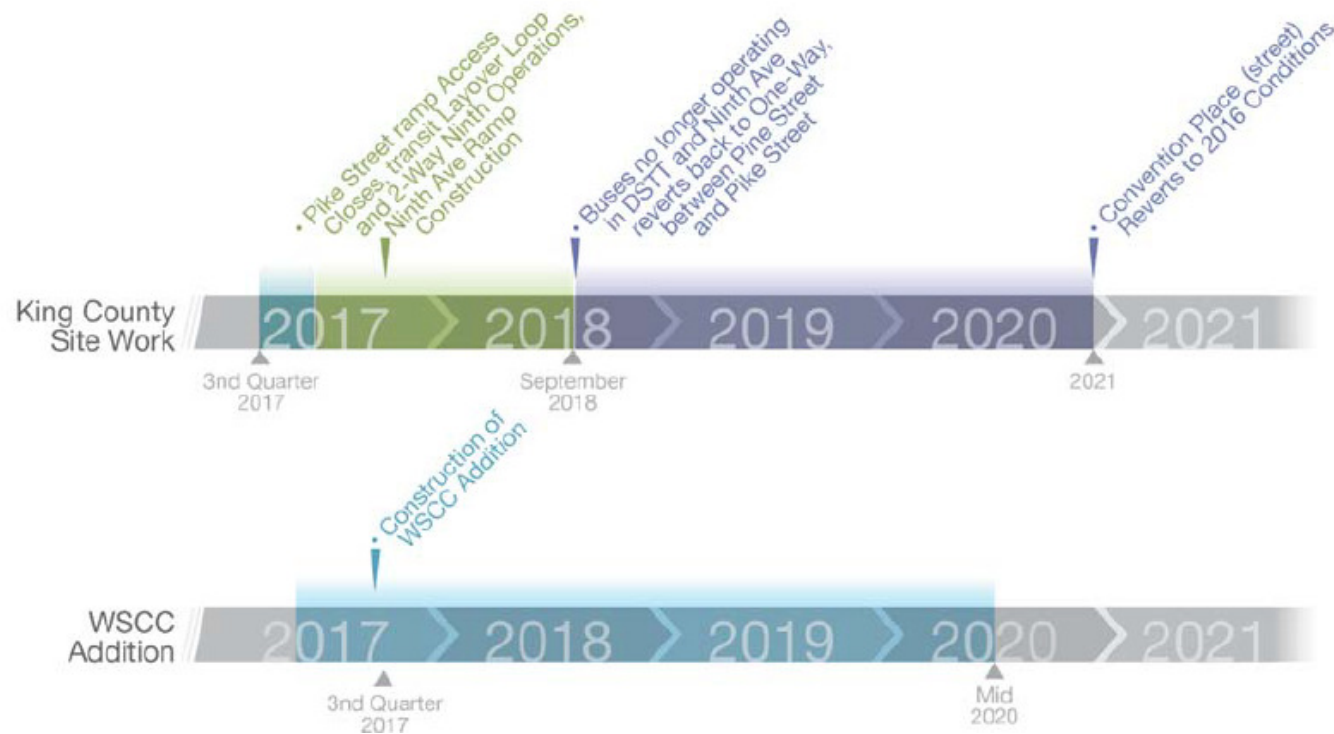
- SDOT – Right-of-way impacts and operations
 - Street Improvement Plans (SIPs)
 - Utility Major Permits (UMPs)
 - Construction Management Plans (CMPs)
 - Street Vacation Recommendation to Council
- SDCI – Private property land use, access
 - Master Use Permits (MUPS)
 - Type 1 Access Decision
 - Construction and Use Permits on Site

Background - Surrounding Land Use



Project Phases

1. King County Site Work (KCSW)
2. WSCC Addition Construction
3. Co-Development Construction

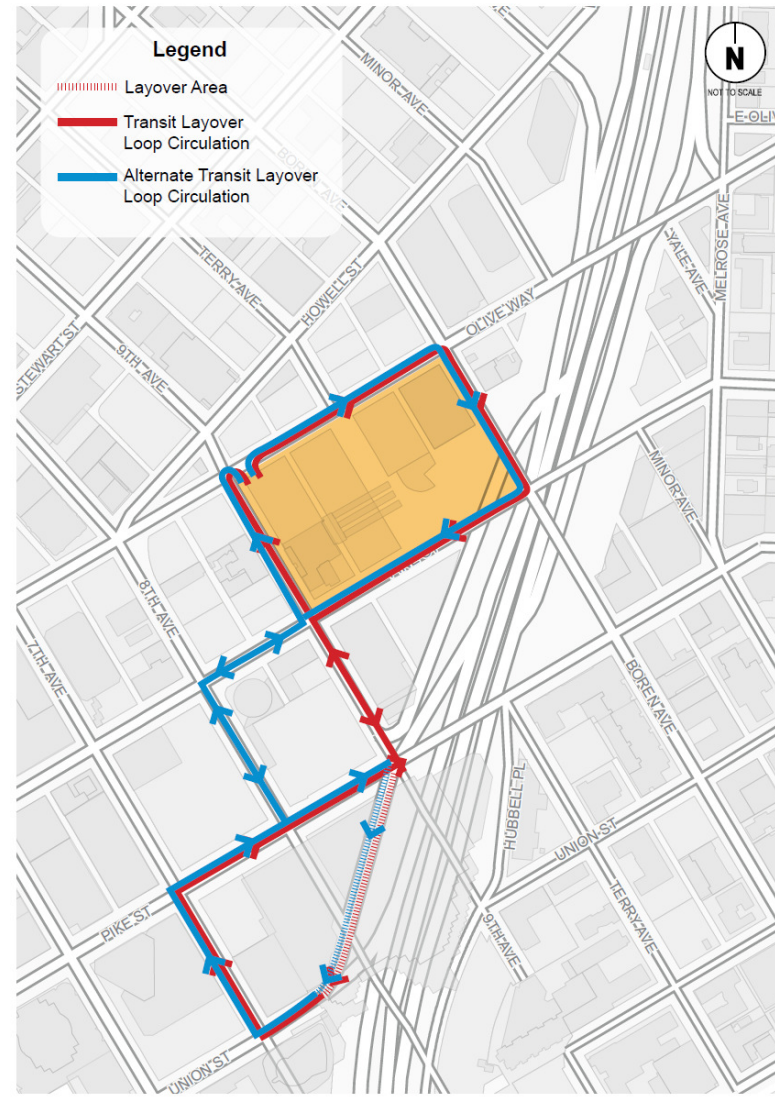


KCSW Construction

- Clear CPS for future sale:
 - Bus passenger facility closure
 - Bus layover moves to Convention Place
 - Bus layover loop via Convention Place, 7th Ave, Pike St, and 9th Ave
 - Bus tunnel Access via 9th Ave

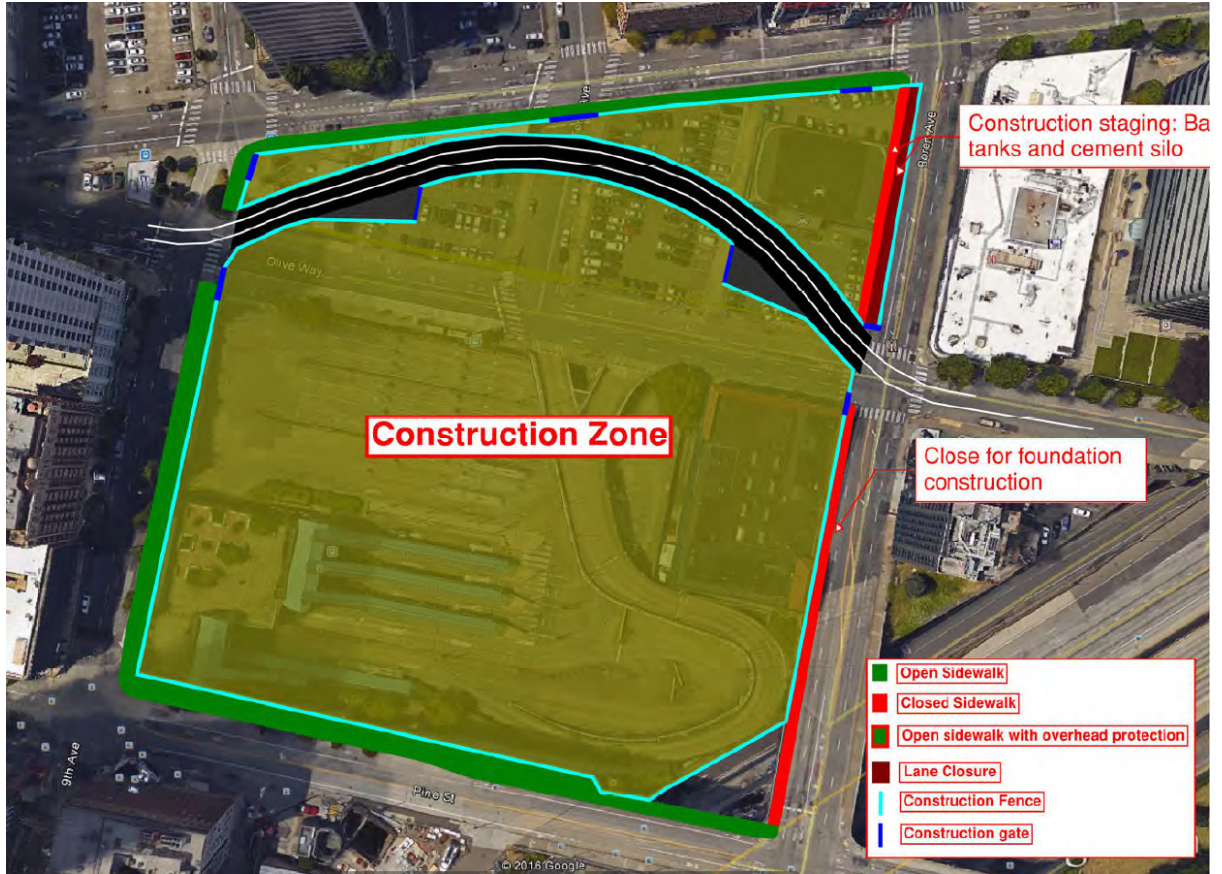
KCSW – Temporary Layover Loop

- Convert 9th to two-way traffic
- 9th Ave closed to general purpose traffic between Olive Way and Pike St
- Accommodations for Paramount Theater loading



WSCC Addition Construction

- Olive Way rerouted temporarily
- Reconfiguration of lanes on Howell St, Boren Ave, and Minor Ave
- Circulation changes for I-5 Express Lane ramp traffic
- Sidewalk closures on certain block faces



Co-Development Construction

- Open a reconstructed Olive Way after one year
- Continue work on Sites A, B, and C
- Completion 2020 (tower work TBD)



Questions?

Mark.Bandy@seattle.gov | (206) 684-5097

www.seattle.gov/transportation



Seattle
Department of
Transportation