

RAPIDRIDE



RapidRide Expansion Program

Hannah McIntosh
RapidRide Program Director
June 27, 2018

RAPIDRIDE

Agenda

- What is RapidRide?
- METRO CONNECTS vision
- RapidRide Expansion Program planning
- RapidRide Expansion Program implementation



RAPIDRIDE

What is RapidRide?

RapidRide is a robust arterial Bus Rapid Transit service that:

- Is the “Best of Metro”
- Has high quality service and facilities
- Employs state-of-the-art innovations
- Travels natural transportation corridors
- Has the highest level of speed and reliability investments among Metro services



RAPIDRIDE

RapidRide as the “best of Metro”

- More frequent – every 5-15 minutes most hours of the day
- Increased investment in speed and reliability (i.e., bus-only lanes and transit signal priority)
- Opportunities for innovation
- Enhanced passenger amenities at stops and stations (i.e., off-board fare payment and real-time information signs)
- Unique, premium coaches



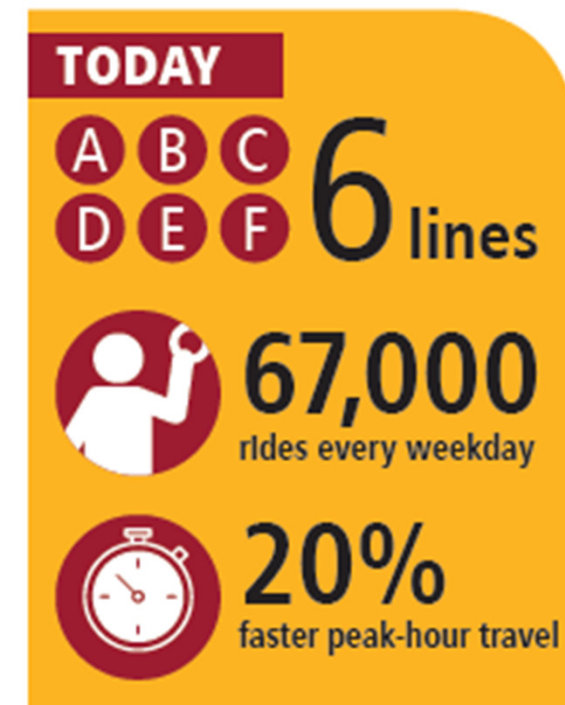
RAPIDRIDE

RapidRide = Results

On the A-F lines, we've seen:

- Up to 65% increase in ridership over existing service five years after line launch
- Up to 20% faster travel times

The A-F lines now carry 18% of existing Metro ridership.



RAPIDRIDE

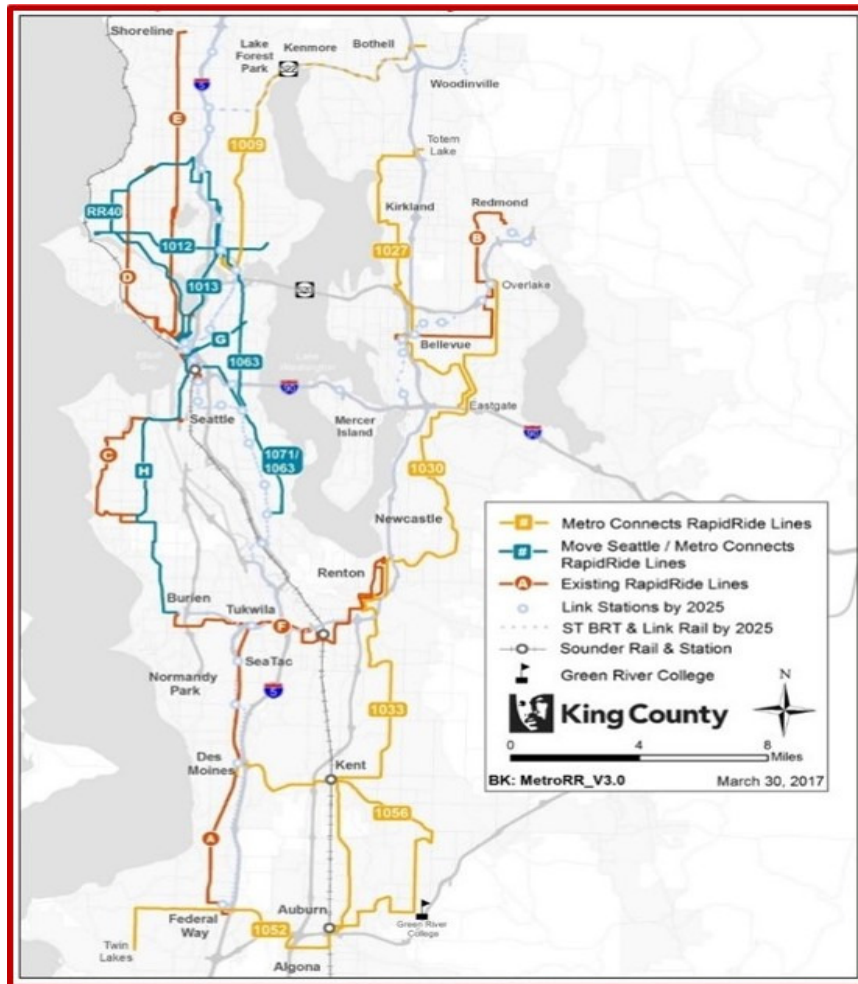
Case Study: E Line

- Over 17,000 daily riders
- 65% ridership increase over existing service 5 years after implementation; 72% increase today
- 19% travel time savings over existing service
- Partnerships key to implementation



RAPIDRIDE

METRO CONNECTS Vision



MORE SERVICE

MORE CHOICES

ONE SYSTEM



METRO CONNECTS Partnerships

- Land use and zoning
- Traffic operations
- Expanding and improving infrastructure
- Opportunistic and proactive planning
- Direct capital funding
- Grant coordination
- Innovative approaches to service

Partnerships are critical to implementing the RapidRide vision.



RapidRide Expansion Program Design

RapidRide Expansion Program Phase 1:

- Comprehensive effort to plan every aspect of RapidRide Expansion
- Results in a manual for Rapid Ride program delivery
- Complete mid-2019



RAPIDRIDE

Tasks

1. Framework for Planning
2. Program Goals and Standard
3. Branding Review and Kit of Parts Refinement
4. Implementation Plan for 6 King County RR Corridors
5. Program Service Integration Plan
6. Environmental and Regulatory Review
7. Funding Strategies
8. Final Manual for Delivery



RAPIDRIDE

Corridors in Design

1. H Line (Burien-Delridge-Seattle CBD)
2. G Line (Seattle CBD-First Hill-Madison Valley)
3. Renton-Kent-Auburn
(*Summer 2018*)



RAPIDRIDE

Corridors in Planning

1. Seattle CBD-Mount Baker-Rainier Beach
2. Seattle CBD-Eastlake-UDistrict
3. Totem Lake-Bellevue-Eastgate



Next Steps in 2018

- Continue RapidRide Expansion Program Phase 1 work
- Begin Phase 2 of H Line design
- Continue fleet assessment and implementation planning with SDOT on G Line
- Continue coordination with SDOT on Seattle CBD-Mount Baker-Rainier Beach and Seattle CBD-Eastlake-UDistrict planning
- Begin Renton-Kent-Auburn and additional King County RapidRide Line design
- Define program implementation timeline



RAPIDRIDE

Questions?

