

# Updating Seattle's Food Action Plan

Meeting with the Sweetened  
Beverage Tax Community  
Advisory Board



# Topics

- Introductions
- History of Seattle's Food Action Plan
- Process & Timeline for updating the Plan
- Opportunities for CAB involvement

# Introductions

- **Seán Walsh**, Food and Nutrition Strategic Advisor, Human Services Department (**HSD**)
- **Chris Iberle**, Strategic Advisor, Food Policy and Programs, Office of Sustainability & Environment (**OSE**)
- **Bridget Igoe**, Interim Food Policy and Programs Manager, Office of Sustainability & Environment (**OSE**)



# Food-Related Programs and Policies managed by HSD and OSE

## HSD

- Farm to Table\*
- Food Banks\*
- Meal Programs\*
- Child Care Nutrition
- Summer Meals
- After School Meals
- **Food Action Plan\***

*\*Funded by the SBT*

## OSE

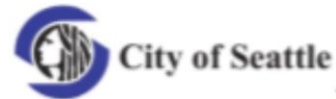
- Fresh Bucks\*
- Healthy Food in Schools\*
- Sweetened Beverage Tax Community Advisory Board\*
- Equity & Environment Initiative
- **Food Action Plan\***

# Seattle's Food Action Plan (2012)

---

Articulates 40 actions to:

- Increase access to healthy food
- Expand opportunities to grow food in the City
- Strengthen our regional food economy
- Reduce food-related waste.



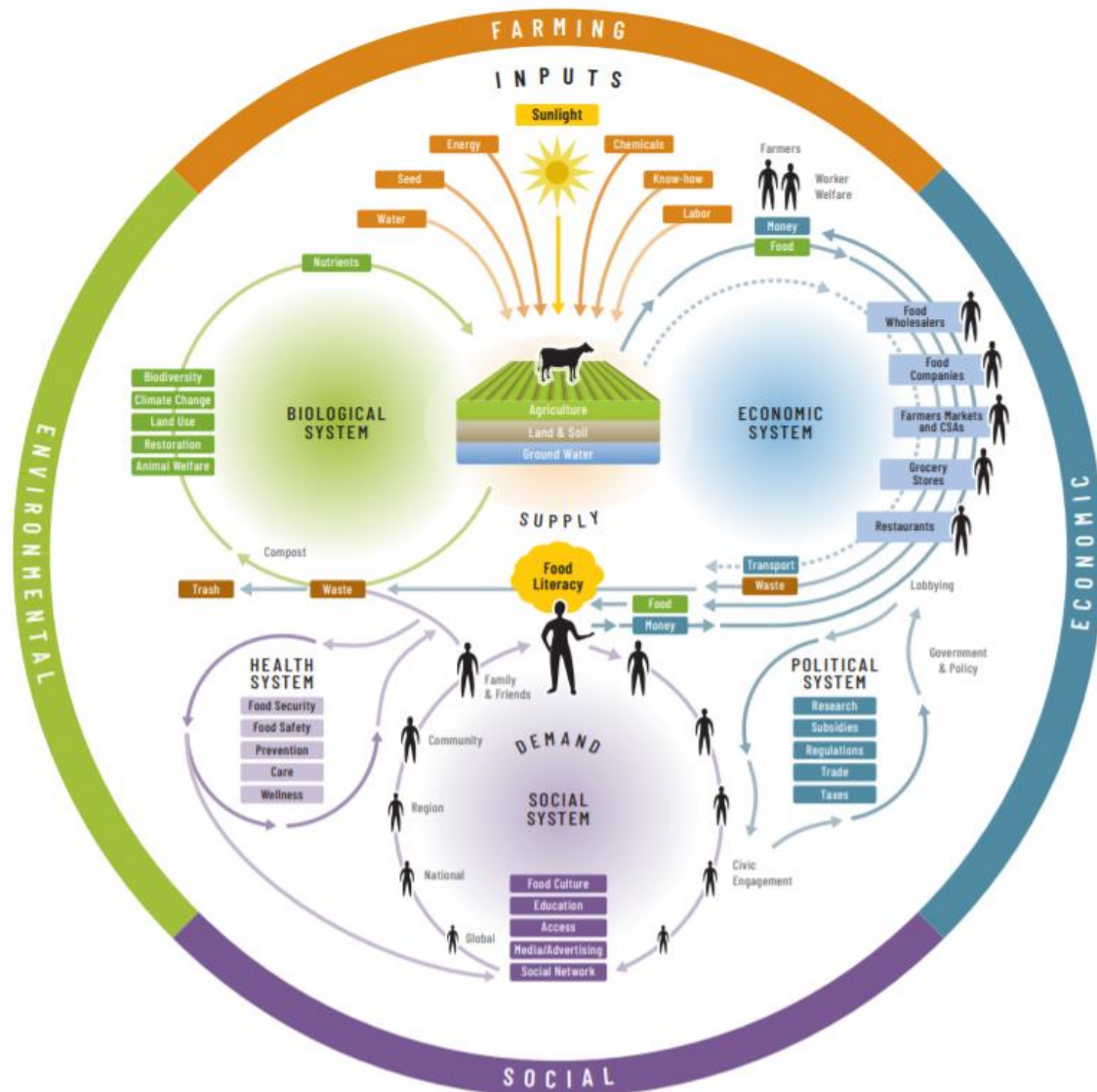
## FOOD ACTION PLAN



# **Why do we need a (new) Food Action Plan?**



# Food Touches Everything



<https://www.nourishlife.org/teach/food-system-tools/>

# Food System Inequities

**BIPOC and very low-income communities are most affected by inequities in the food system:**

- Food insecurity and hunger
- Health issues
- Inadequate food access
- Exploited labor
- Access to land, credit, wealth
- What kinds of traditions and knowledge are valued
- Environmental impact



# City's Current Food Work

## Managing Departments:

- Human Services
- Sustainability & Environment
- Neighborhoods
- Civil Rights
- Economic Development
- Public Utilities
- Parks & Recreation
- Planning and Community Development
- Public Health

### Food Access

- Fresh Bucks
- Farm to Table
- Child Care Nutrition Program
- Food Banks
- Senior Meal Program and After School Meals
- Community Meal Programs
- Healthy Food in Schools
- Summer Meals
- Emergency Preparedness
- Disparity Data Monitoring

### Urban Agriculture

- P-Patch Community Gardens
- Market Garden Program
- Urban Food System Program

### Food Recovery and Waste

- Food Rescue Innovation
- Food and Compost Services

### Investments in Community-Led Work

- Food Equity Fund
- Economic Development Initiative
- Equitable Communities Initiative
- Environmental Justice Fund
- King Conservation District Seattle Partnership Grant Program
- Waste Free Communities Match Grant



# Process for Updating the Food Action Plan



Phase	2021				2022								Progress	Status				
	SEP	OCT	NOV	DEC	JAN	FEB	MAR	APR	MAY	JUN	JUL	AUG			SEP	OCT	NOV	DEC
Community Engagement	▶																	<ul style="list-style-type: none"> <li>Compiled existing information</li> <li>Environmental Justice Committee (EJC) Food Justice Values</li> <li><b>In progress:</b> Scoping engagements</li> </ul>
Vision, Values	▶																	<ul style="list-style-type: none"> <li>EJC Food Justice Values and City Commitments</li> </ul>
Framework	▶																	<ul style="list-style-type: none"> <li>Working Framework, grounded in vision and values</li> </ul>
Goals, Actions	▶																	<ul style="list-style-type: none"> <li>Early list potential goals and actions, based on previous community and department input</li> <li><b>Next steps:</b> Refine goals and actions based on community and stakeholder input</li> </ul>
Success Measures					▶													
Draft Plan						▶												
Final Plan													▶					

Not started

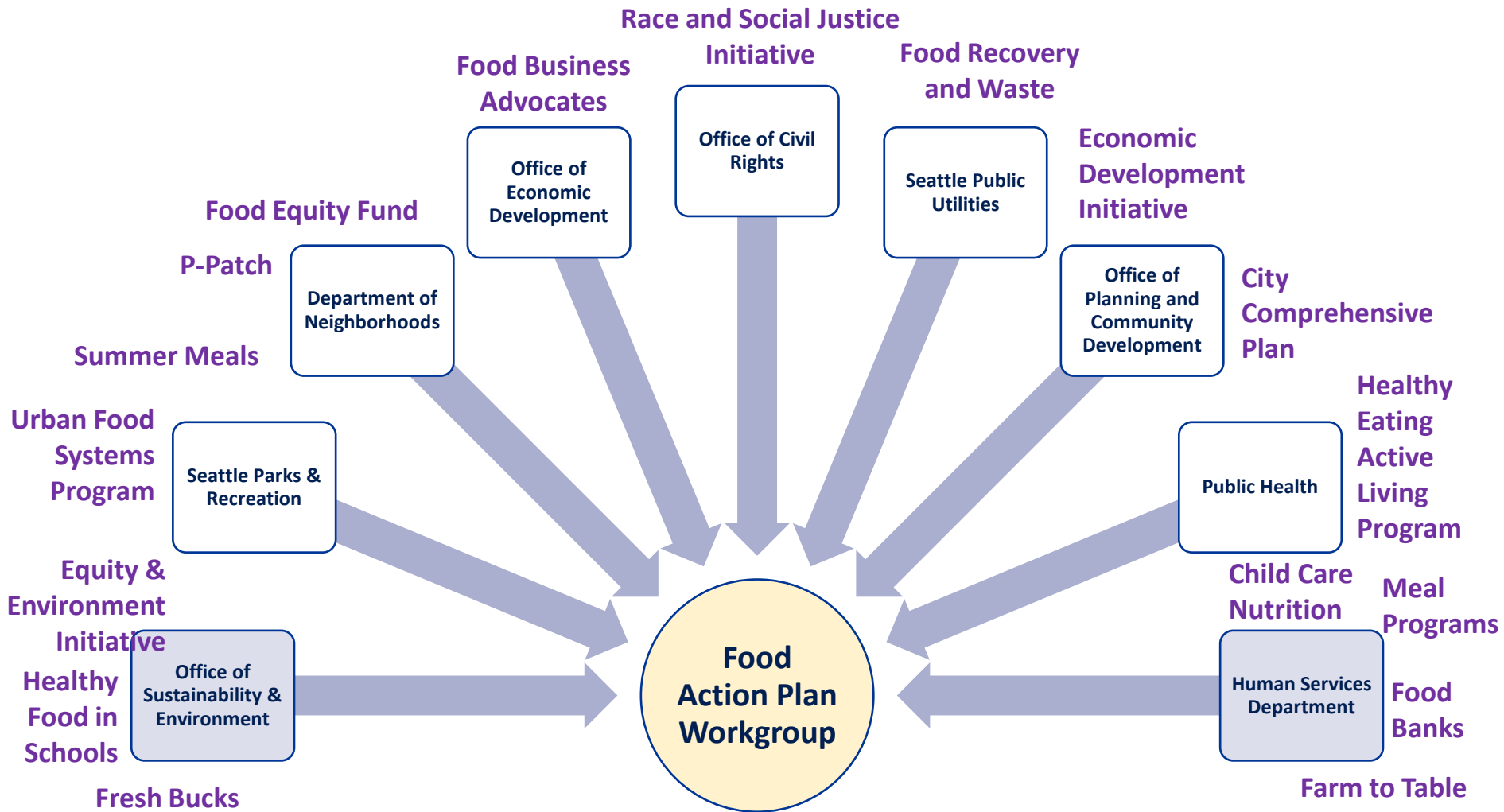
Started

In progress

Closing

Complete

# City of Seattle Food Action Plan Workgroup



# Food System Stakeholders

## Nonprofit Organizations

- Anti-hunger/anti-poverty action coalitions
- Workforce development organizations
- Food justice organizations
- Community-based public health orgs.
- Local/regional food and farming advocacy groups and coalitions

## Community Advisory Boards and Committees

- Environmental Justice Committee
- Sweetened Beverage Tax Community Advisory Board
- Duwamish Valley Action Plan network
- Lived Experience Coalition

## Leaders and Influencers from

- Most-impacted Communities
- Mutual aid networks
- Food and Environmental Justice Movements
- Urban agriculture

## Local and Regional Food and Farming Enterprises

- Industry and Trade Organizations
- Farmers markets, farm stands, and vendors
- Grocery stores
- Chefs, Restaurants
- Food hubs
- Cooperatives, Food hubs

## Government

- City of Seattle departments
- Public Health – Seattle & King County
- King County departments

## Educational Institutions

- Seattle Public Schools
- Seattle Community Colleges
- Universities

# Opportunities for CAB input

- Identification of Goals and Actions (*Jan-Feb*)
- Prioritization of Goals and Actions (*Mar-Apr*)
- Community Engagement (*Dec-May*)
  - Provide input on engagement plans
  - Co-lead engagement
- Reviewing draft Plan (*May-June*)



# Progress and Status

# Values (see handout for details)

● Complete



*\*Aligns with CAB value*



# Emerging Themes and Goals



## Notable Themes/Goal Areas:

- Culturally relevant, **equitable food access** programs
- Benefits that increase **consumer choice** and buying power
- **Land access** and stewardship by *Priority Communities* to grow food
- Culturally relevant and empowering food and nutrition **education**
- Prevent and reduce **food and food-related waste** to increase food access and reduce climate pollution
- Reduce **climate pollution** associated with food production and consumption within Seattle
- Support **local growers, food entrepreneurship, and food projects**, led by and for *Priority Communities*
- Values-based **food purchasing standards** to promote a sustainable and equitable food system
- **Workforce development** and equitable employment opportunities

# Community Engagement



 Started

- **Scheduling underway**

- BIPOC growers, vendors, processors
- Mutual aid leaders
- Lived Experience Coalition
- Meals Partnership Coalition
- Native and Indigenous communities
- Food and Environmental Justice community leaders

- **Expected, not yet scheduled**

- Community-based organizations that partner with City on current food programming
- Food businesses (chefs, restaurants, retail)

Phase	2021				2022												Progress	Status		
	SEP	OCT	NOV	DEC	JAN	FEB	MAR	APR	MAY	JUN	JUL	AUG	SEP	OCT	NOV	DEC				
Community Engagement 														<ul style="list-style-type: none"> <li>Compiled existing information</li> <li>Environmental Justice Committee (EJC) Food Justice Values</li> <li><b>In progress:</b> Scoping engagements</li> </ul>						
Vision, Values																		<ul style="list-style-type: none"> <li>EJC Food Justice Values and City Commitments</li> </ul>		
Framework																				<ul style="list-style-type: none"> <li>Working Framework, grounded in vision and values</li> </ul>
Goals, Actions 														<ul style="list-style-type: none"> <li>Early list potential goals and actions, based on previous community and department input</li> <li><b>Next steps:</b> Refine goals and actions based on community and stakeholder input</li> </ul>						
Success Measures																				
Draft Plan																				
Final Plan																				

 Not started

 Started

 In progress

 Closing

 Complete

# Acknowledgements

## Food Action Plan Workgroup

**Daniel Sims**, Department of Neighborhoods

**Kenya Freddie**, Department of Neighborhoods

**Angela Miyamoto**, Human Services Department

**Sean Walsh**, Human Services Department

**Shuxuan Zhou**, Office of Civil Rights

**Jennifer Tam**, Office of Economic Development

**David Goldberg**, Office of Planning and Community Development

**Bridget Igoe**, Office of Sustainability and Environment

**Chris Iberle**, Office of Sustainability and Environment

**Lisa Chen**, Office of Sustainability and Environment

**Chukundi Salisbury**, Parks and Recreation

**Todd Burley**, Parks and Recreation

**Elizabeth Kimball**, Public Health – Seattle & King County

**Liz Fikejs**, Seattle Public Utilities

## Environmental Justice Committee

**Bri Castijella**, Delridge Neighborhood Development Association

**Hannah Wilson**, Black Farmers Collective

**Jeraldi Gonzalez-Monje**, Duwamish River Cleanup Coalition, Sustainable Seattle

**Joshua Jenkins**, Black Farmers Collective

# Thank you!

Questions? Comments?