

ENVISIONING A CITY FOR OUR COMMUNITY



WHAT DID WE DO?



2

YOUTH GARDEN WORKSHOPS



1

CELEBRATION
FEEDBACK EVENT



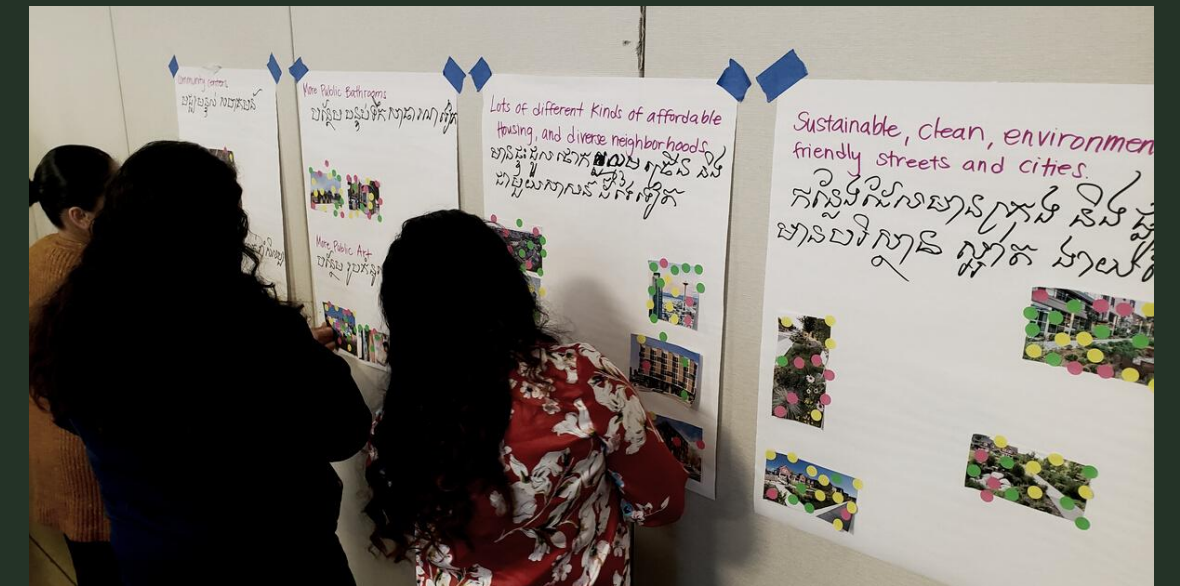
4

ELDER FIELD TRIPS



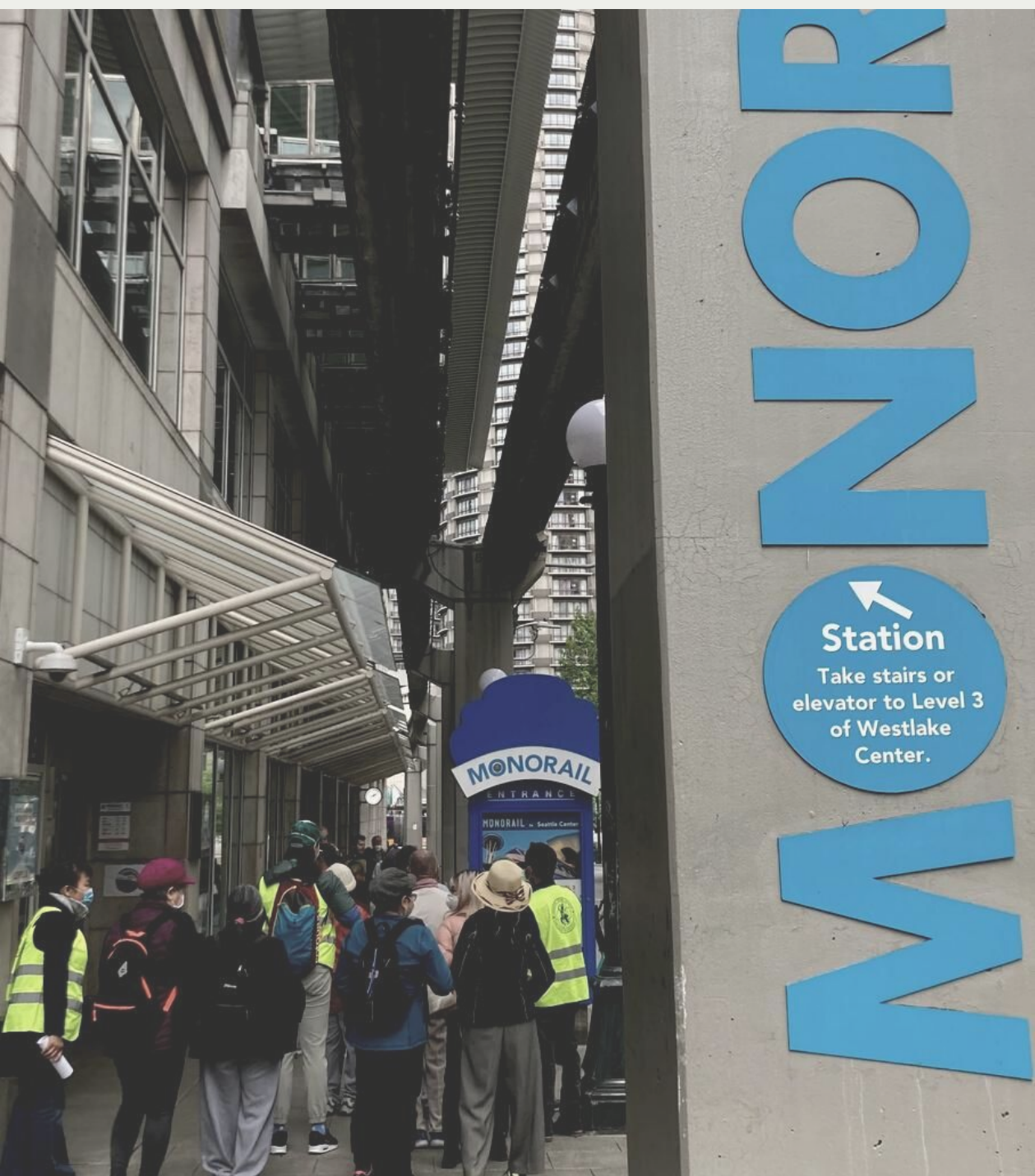
2

YOUTH DANCE WORKSHOPS

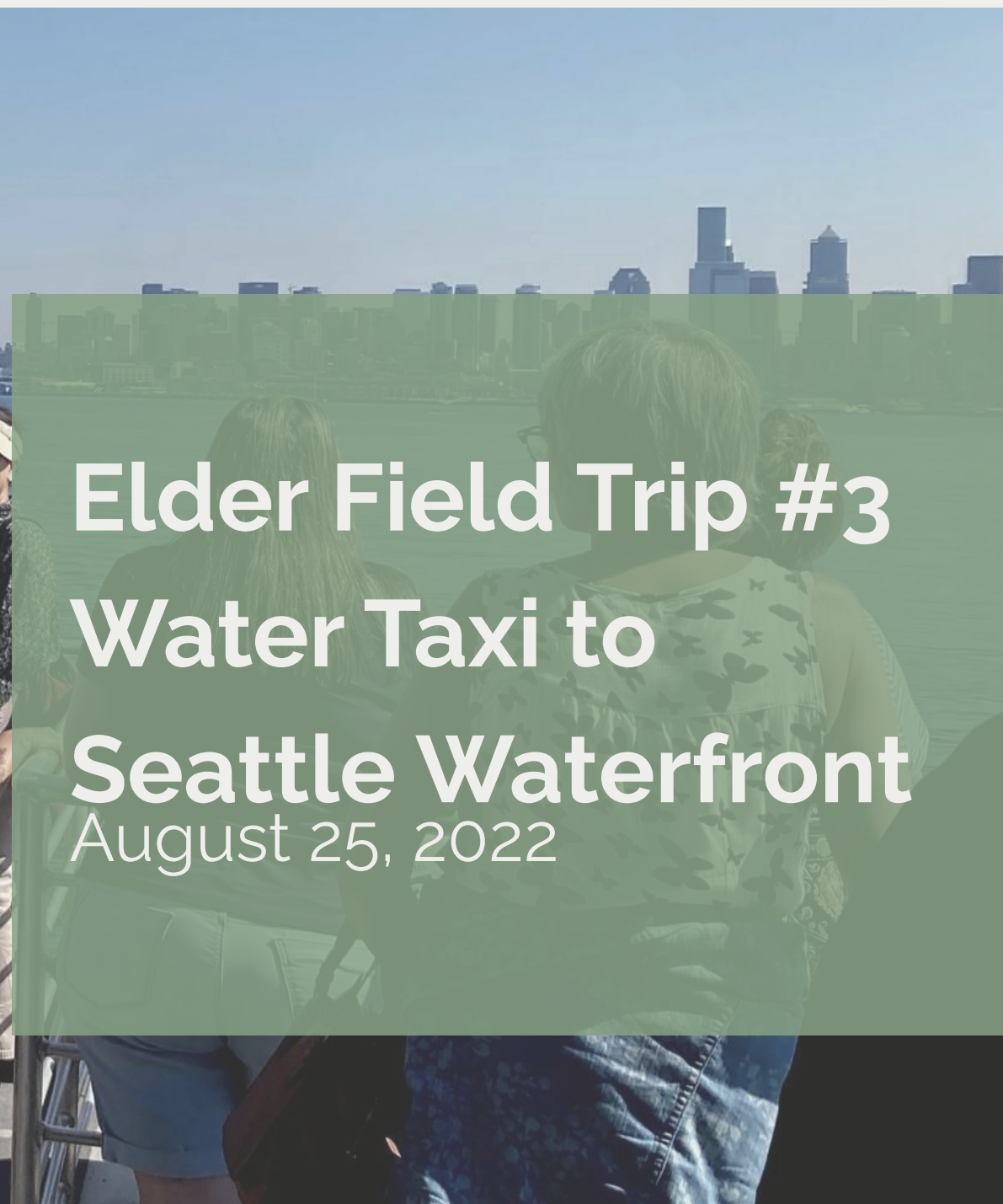


1

REPORTBACK
EVENT







Elder Field Trip #3
Water Taxi to
Seattle Waterfront
August 25, 2022



Elder Field Trip #4
Woodland Park
Rose Garden &
Green Lake Park
September 13, 2022

GARDEN YOUTH

WORKSHOPS

Workshop#1 - High Point P-Patch

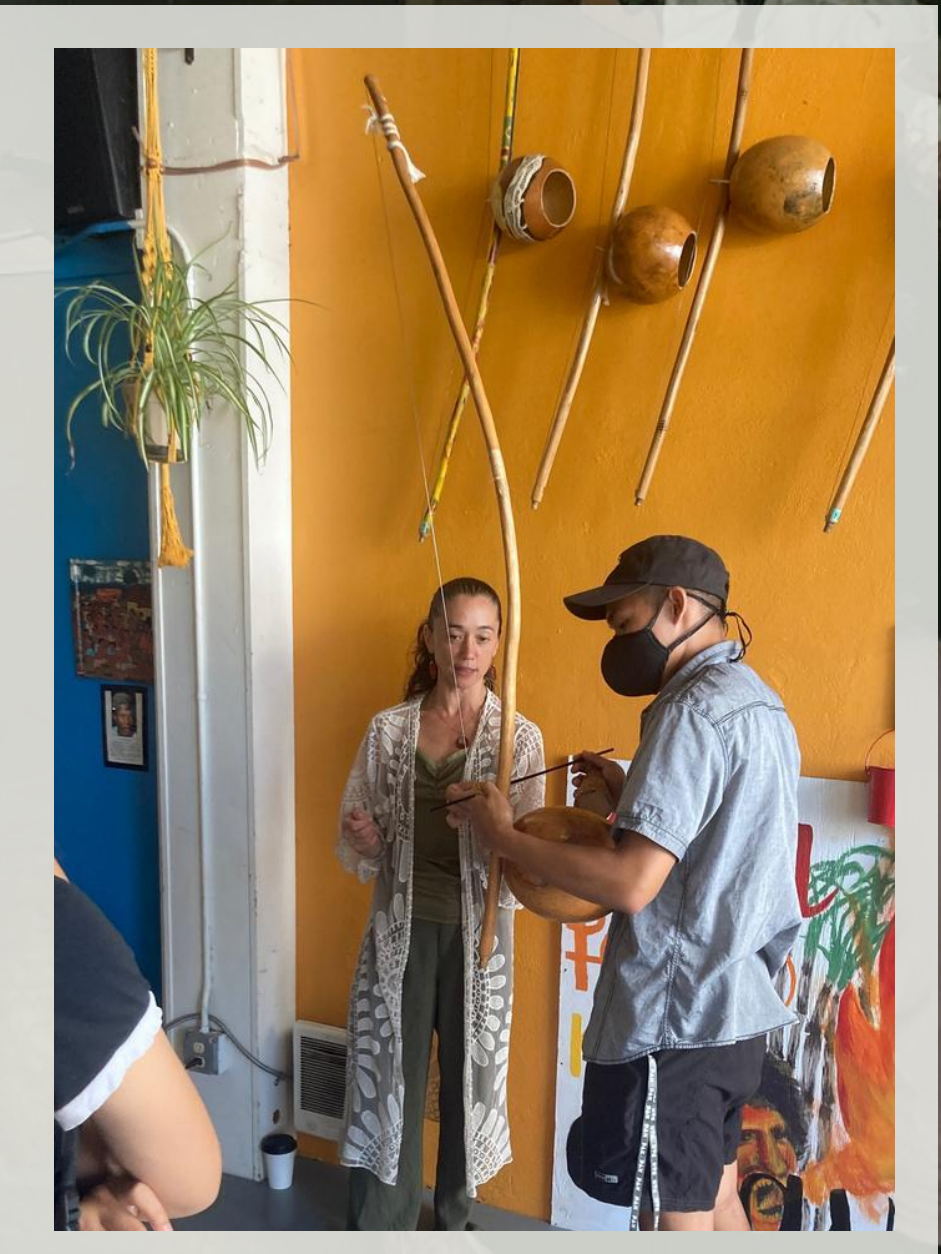
Workshop #2 - Danny Woo Garden





**DANCE YOUTH
WORKSHOPS**

Workshop 1 - Rainier Arts Center
Workshop 2 - Union Cultural Center



HOUSING

DISPLACEMENT AND HOUSING INSTABILITY

Almost all community members have experienced housing instability and have been forced to move away from their cultural centers, shops, and other community resources due to rising costs and lack of support.

ACCESS TO HOUSING RESOURCES

Continue to support and expand subsidized senior housing opportunities.
Resource in-language housing and financial system navigators.

HOUSING

DEVELOPMENT AND DISPARITIES

Support anti-displacement policies and programs that help low-income and cultural communities stay in place.

More support for affordable multi-generational housing and family-size housing of 3+ bedrooms.

HOUSING WITH ACCESS TO GREEN SPACE

Incentivize more housing development that incorporates access to outdoor spaces to garden, such as courtyards, side yards, balconies, rooftop gardens.



Community Voices

“Transportation is essential for my community. Many have been displaced far from where cultural hubs are meaning they have to travel farther to find community. Much of my family lives out in suburbia so transportation is a must; we all use cars.

When going to UW, public transportation was great but as I moved away, that access went away too. The bus routes near my home are few and far between. Would love investment in more bus routes and train stations that don't disturb the community.”

MORE IN-LANGUAGE SIGNAGE AND PROGRAMS TO IMPROVE ACCESSIBILITY

INCREASE TRANSFER TIMES FOR ELDERLY & MOBILITY IMPAIRED COMMUNITY MEMBERS

IMPROVE TRANSIT AVAILABILITY FOR SUBURBS AND EDGES OF SEATTLE

Addressing consequences of displacement

MORE AFFORDABLE AND DISCOUNTED ORCA CARDS

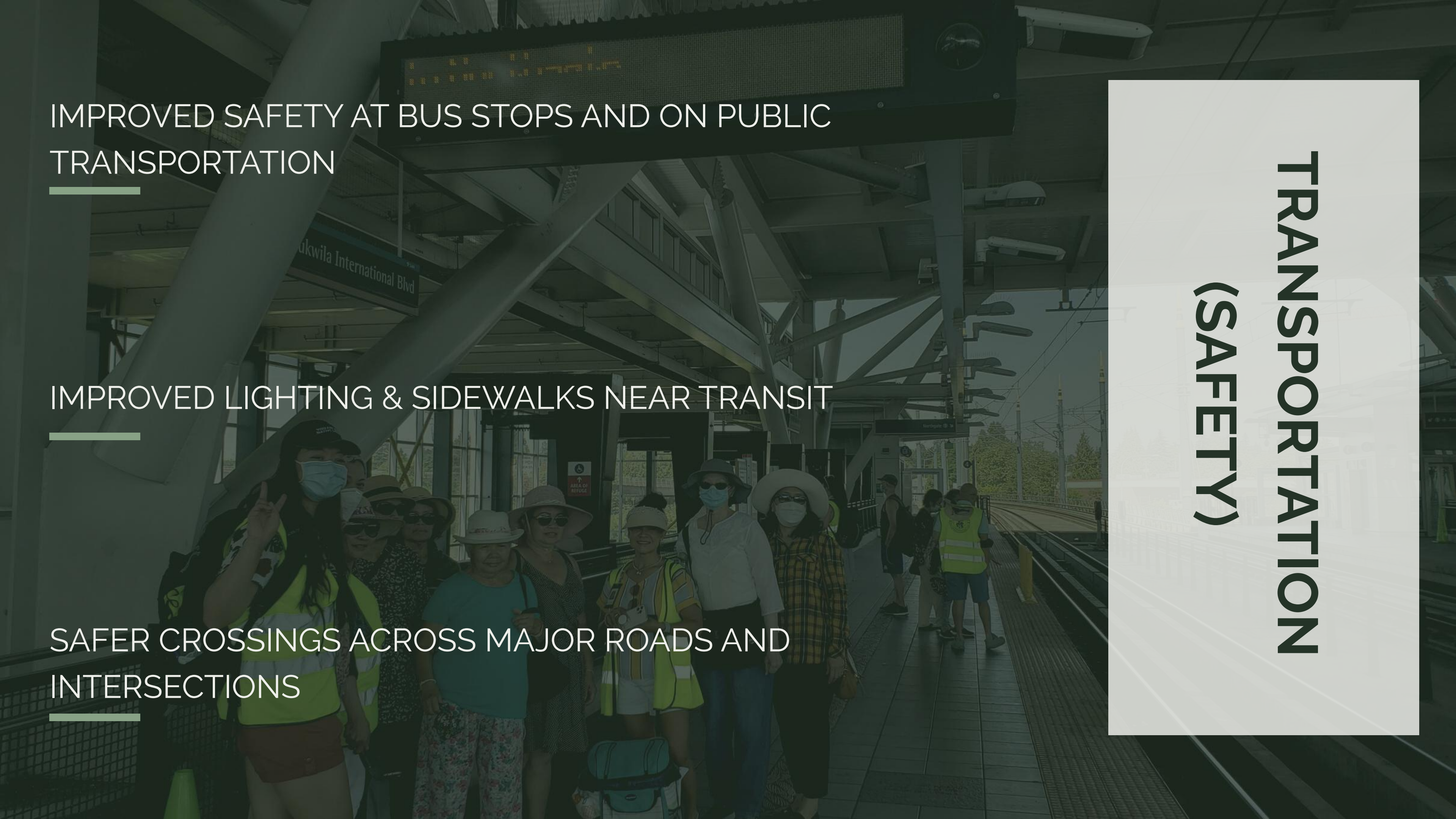
TRANSPORTATION
ការដឹកជញ្ជូន

IMPROVED SAFETY AT BUS STOPS AND ON PUBLIC
TRANSPORTATION

IMPROVED LIGHTING & SIDEWALKS NEAR TRANSIT

SAFER CROSSINGS ACROSS MAJOR ROADS AND
INTERSECTIONS

**TRANSPORTATION
(SAFETY)**



ALTERNATE FORMS OF FARE ENFORCEMENT AND
PRIORITIZING SAFETY BESIDES POLICE

SUPPORT COMMUNITY-BASED PROGRAMS TO BUILD
COMFORT WITH PUBLIC TRANSIT

**TRANSPORTATION
(SAFETY)**



MORE SUSTAINABLE AND EDIBLE LANDSCAPES

INCREASED TRANSIT CONNECTIONS TO PARKS

MORE WELCOMING PARK SPACES

IMPROVE QUALITY OF PUBLIC SPACES AND AMENITIES TO SUPPORT
ELDERS & YOUTH

GREEN & OPEN
SPACE



HEALTHY & CONNECTED COMMUNITIES

SUPPORT HEALTHY COMMUNITIES WITH LOTS OF RESOURCES AND GATHERING SPACES

MORE SPACES FOR COMMUNITY TO GATHER AND SUPPORT COMMUNITY WELL-BEING (BUILDING SOCIAL COHESION)

MORE PUBLIC BATHROOMS, ESPECIALLY AT LIGHT RAIL STATIONS, TRANSIT HUBS, PARKS AND MAJOR PUBLIC LANDMARKS



KHMER ARTS & CULTURE

SUPPORT FOR A DEDICATED KHMER COMMUNITY CENTER

MORE INCLUSIVE, ACCESSIBLE, AND CULTURALLY-RELEVANT PUBLIC SPACES THAT CATER TO THE NEEDS OF BOTH ELDERS AND YOUTH

ACCESS TO CULTURAL ACTIVITIES

DISPLACEMENT

Integrate anti-displacement policies, programs, and investments into major capital project plans to preserve social cohesion, cultural anchors, connectivity, and prevent displacement of vulnerable residents.

Address impact of transportation projects on community

Support more affordable arts & commercial spaces: resource programs to prevent displacement of cultural spaces & businesses, and fund relocation support if they are being actively displaced.



CLIMATE CHANGE & ENVIRONMENTAL ISSUES

MORE INFRASTRUCTURE THAT SUPPORTS STAYING SAFE IN THE HEAT

SUPPORT AND RESOURCE LOW-INCOME RESIDENTS IMPACTED BY FLOODING AND SEA LEVEL RISE.

IMPROVE WATER & AIR QUALITY, AND PROVIDE RESOURCES FOR VULNERABLE COMMUNITY MEMBERS

INVEST IN COMMUNITY-LED PARTNERSHIPS TO BUILD TRUST AROUND PUBLIC PROCESSES

Community Voices

"This [program] empowers us to express that - yes, we can and should demand these kinds of space in our neighborhood... When you're in survival mode, you live in fear, so you don't feel like you're entitled..."

What this project helps us realize is that - yes, we can speak our mind and we are entitled to enjoy those kinds of beautiful spaces in our neighborhoods too."

សូមអរគុណ THANK YOU!



THANK YOU
LIZZIE MOLL &
AJA HAZELHOFF FOR ALL
OF YOUR HELP AND
SUPPORT

NOIO
PATHWAYS
COMMUNITY | ENVIRONMENT | EQUITY

