

Broadway Streetcar

Denny to Roy



Seattle Bike Advisory Board

Presenter: Art Brochet & Steve Durrant

June 3, 2015

SDOT's mission & vision

Mission: delivering a first-rate transportation system for Seattle.



Vision: a vibrant Seattle with connected people, places, and products.

SDOT's core principles



Presentation overview

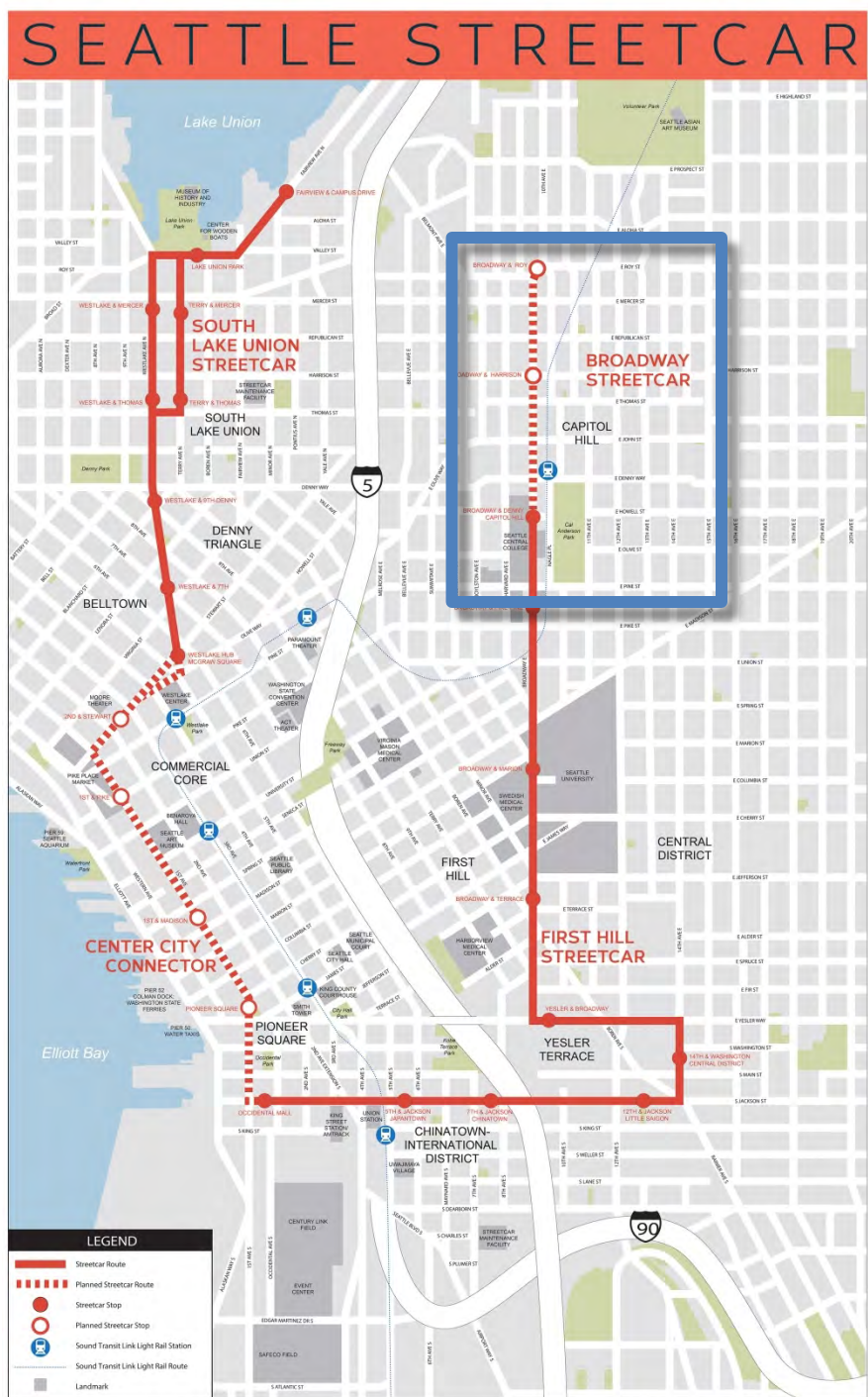
- Background
- Project area
- Existing conditions
- Proposal
- Next steps



Background

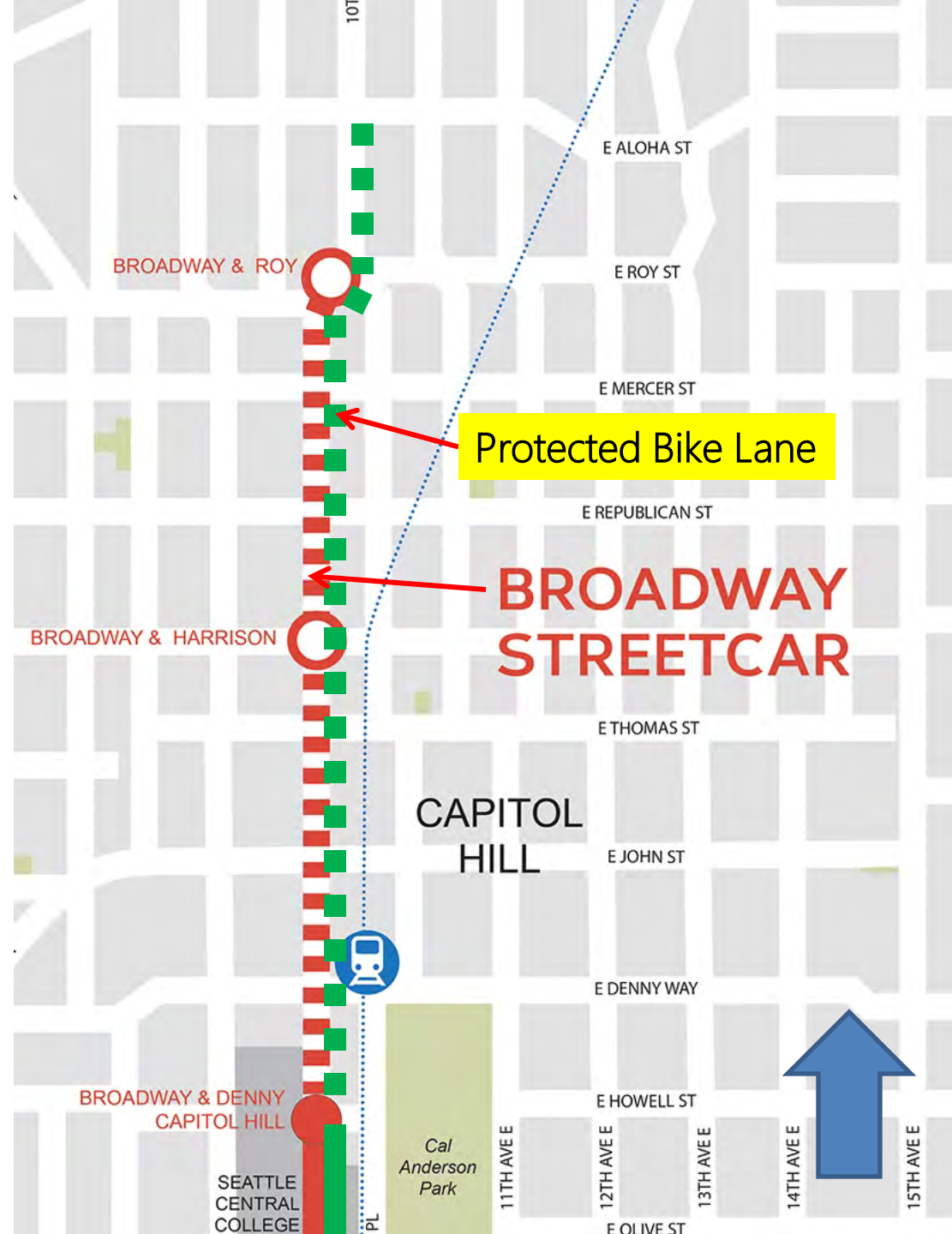
- First Hill Line protected bike lane construction complete south of Denny in May 2014
- Vehicle testing begun May 2015
- Broadway Line protected bike lane extension to Aloha ~2017 (dependent on funding)

Project area



Project area

3100 feet Denny to Aloha



Existing conditions



54' curb-to-curb (varies)
Parking/Three Travel/Parking

Broadway looking north at Republican

Future features

Raised median

Low-profile mountable median
vs existing 6" curb





Intersection Striping

Green across the intersection



Driveway Striping



Solid panels with bike lane marking

Proposal

8" Signal heads

Lower
On corner pole



Signal Placement

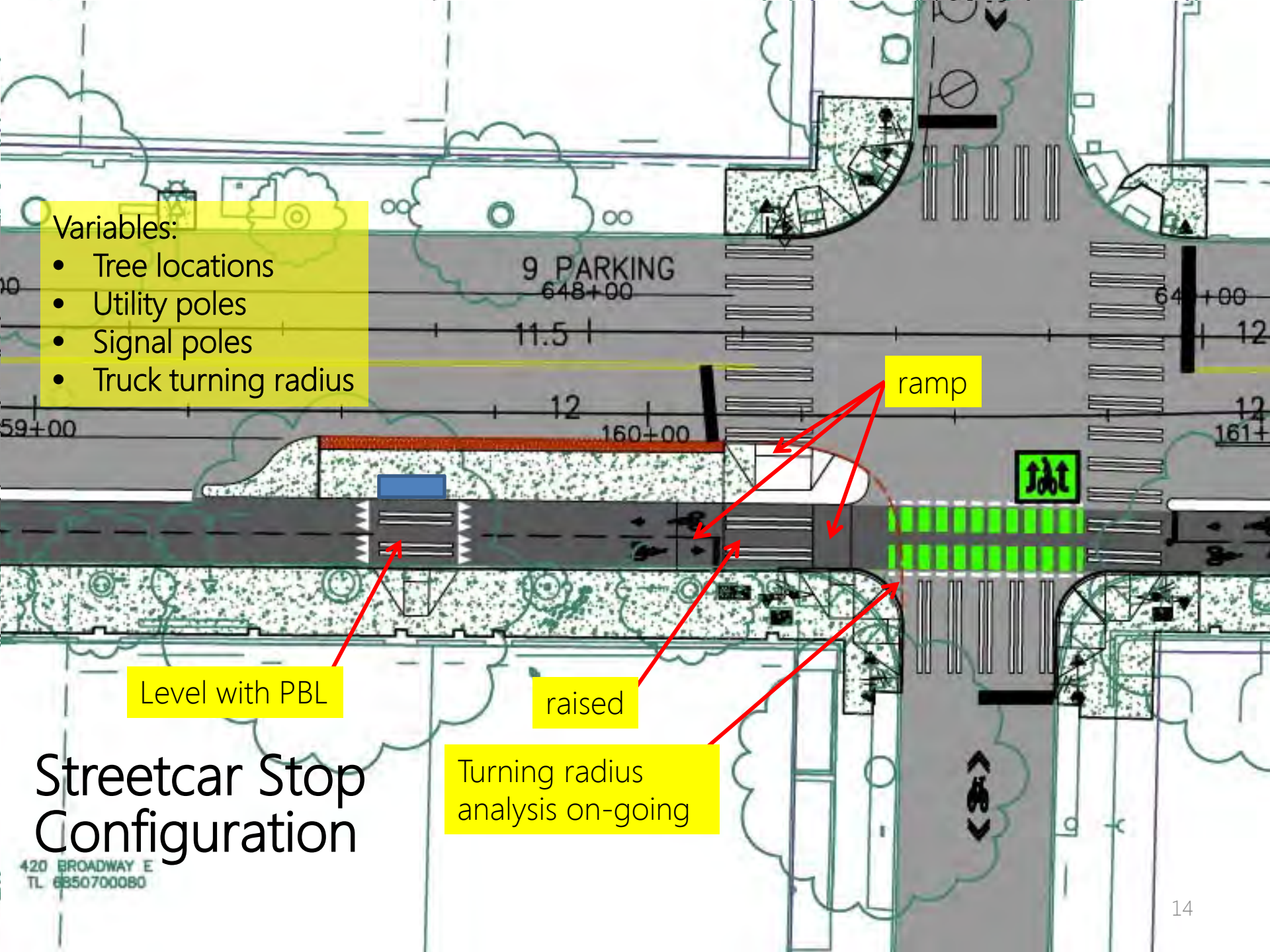


Direct access to crosswalk

Platform Access to Crosswalk

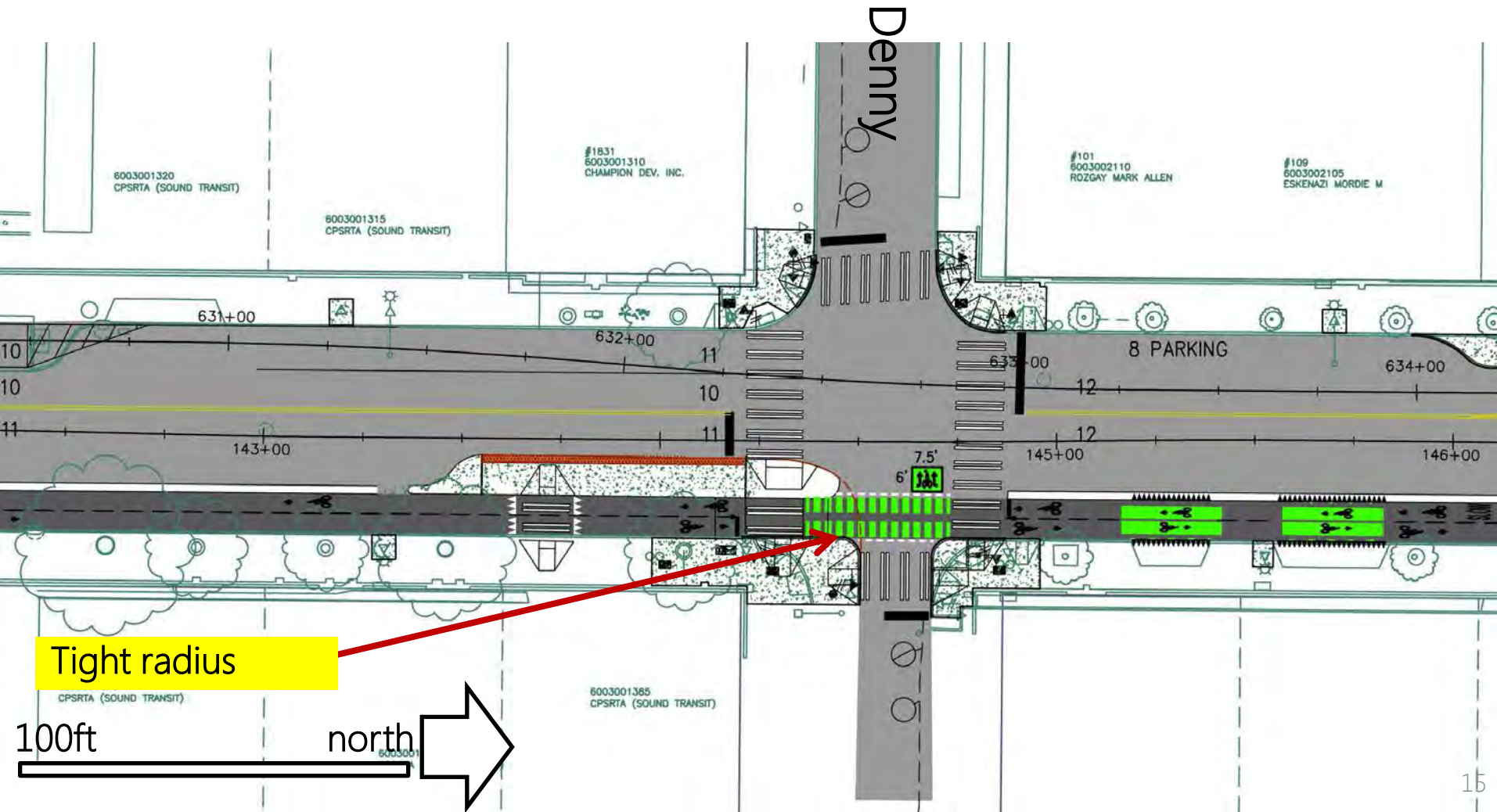
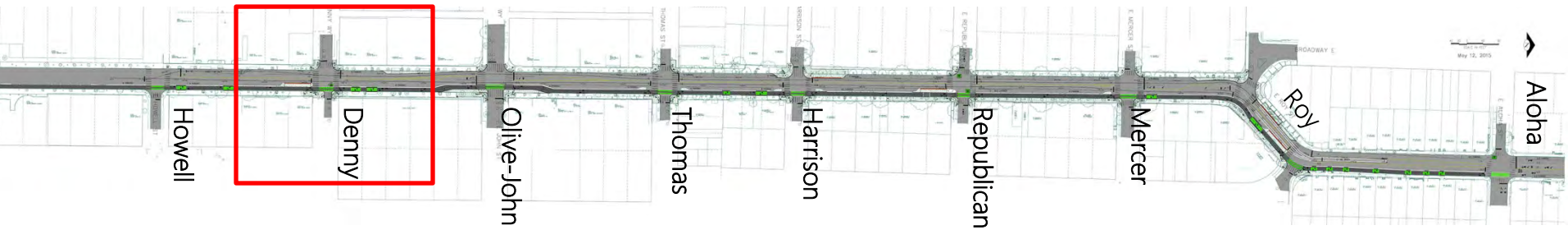
Variables:

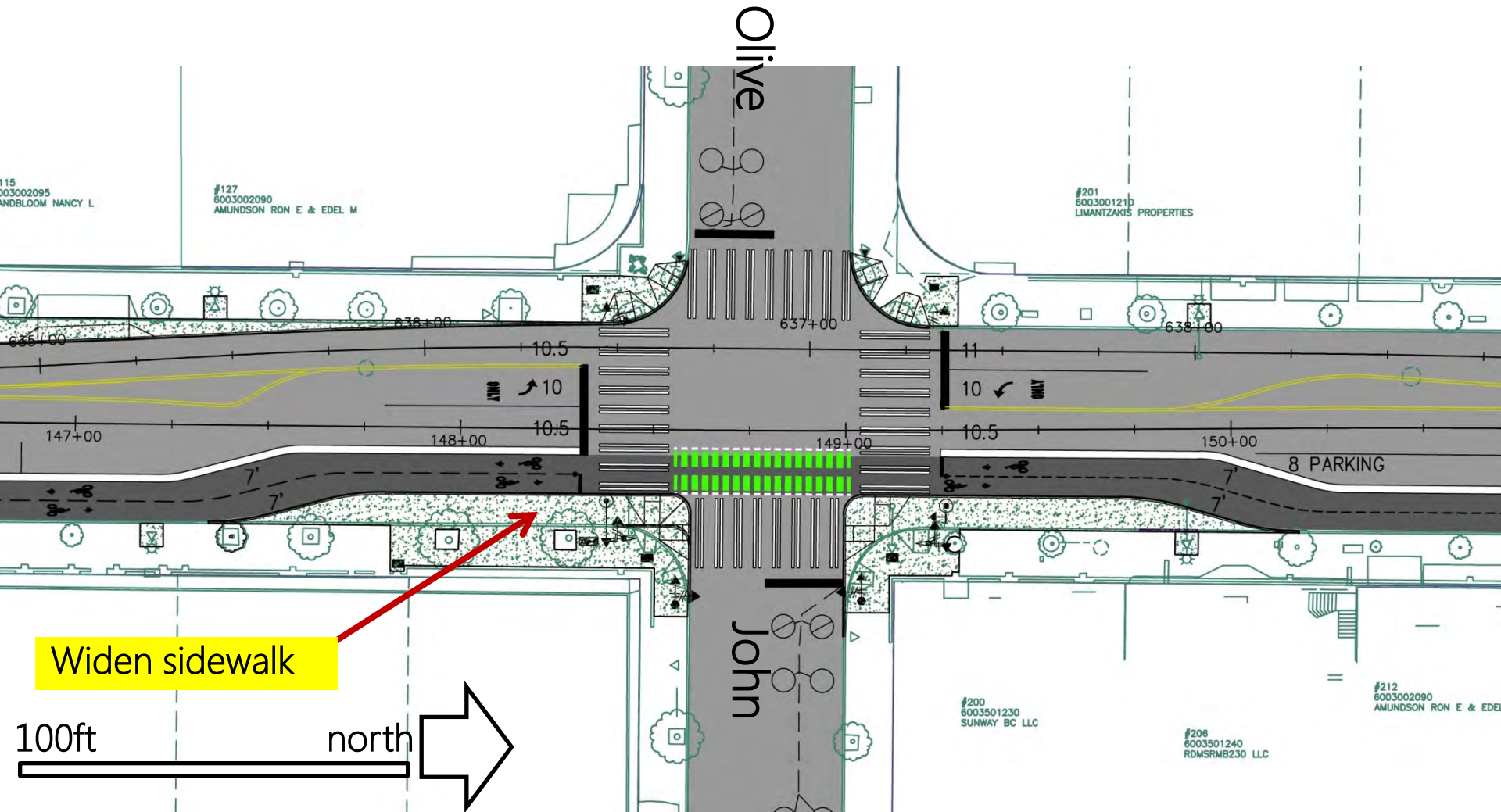
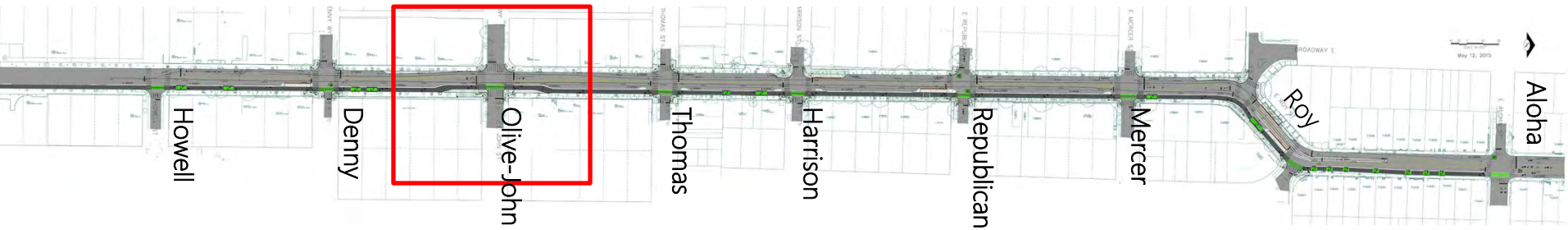
- Tree locations
- Utility poles
- Signal poles
- Truck turning radius

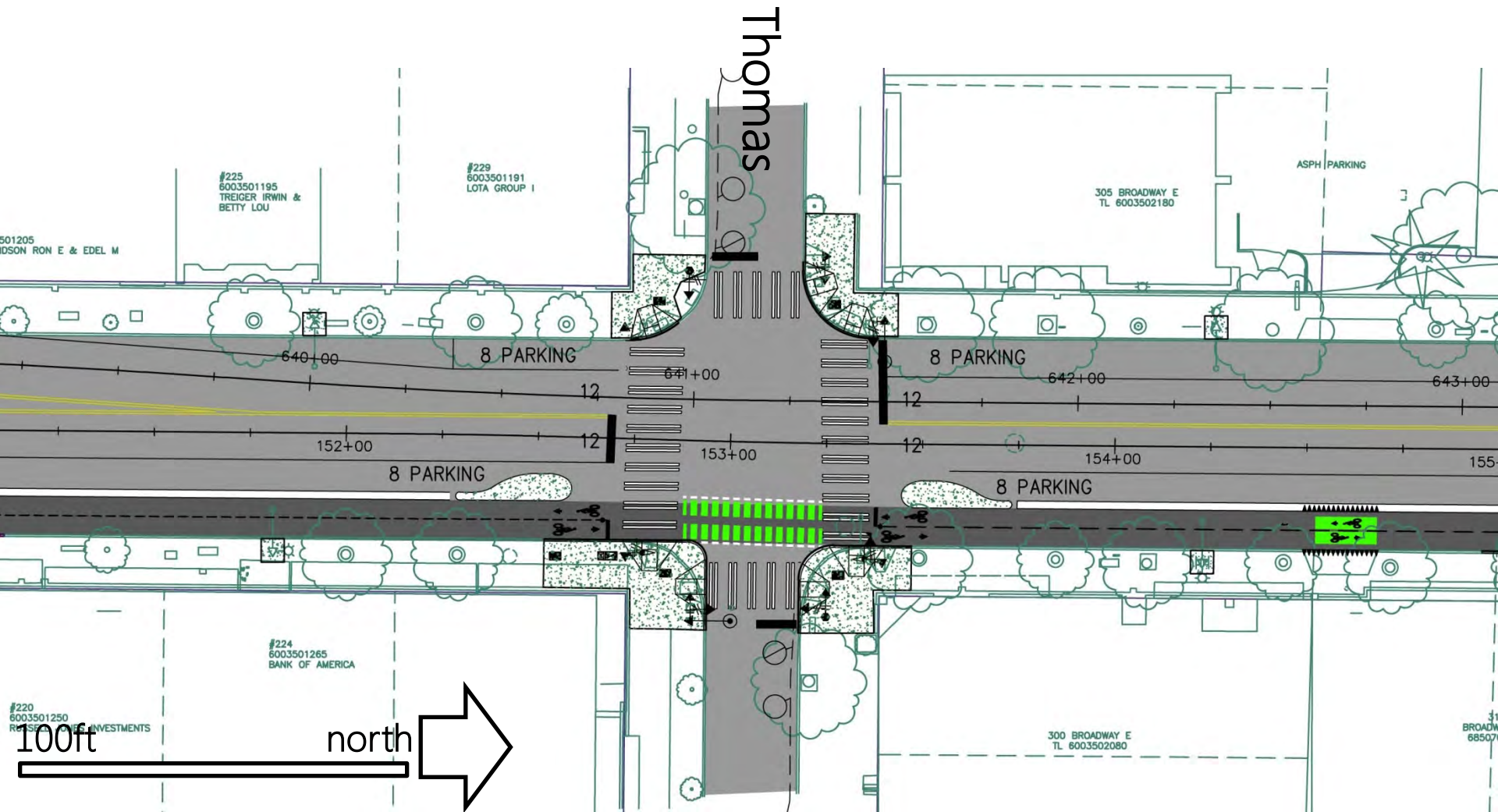
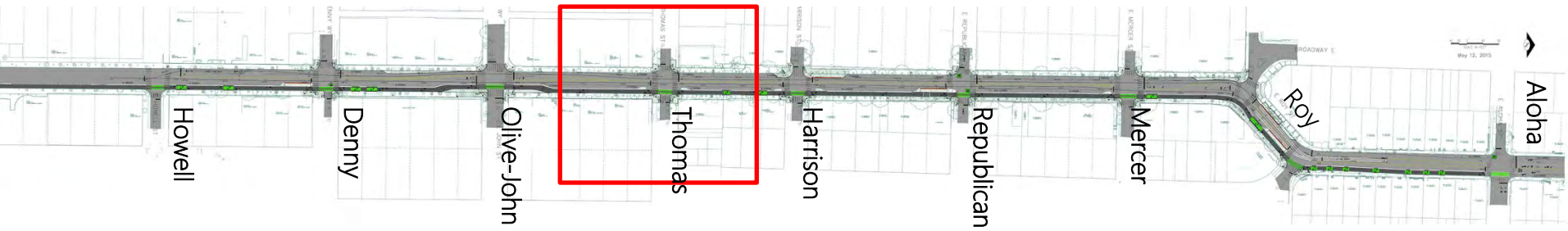


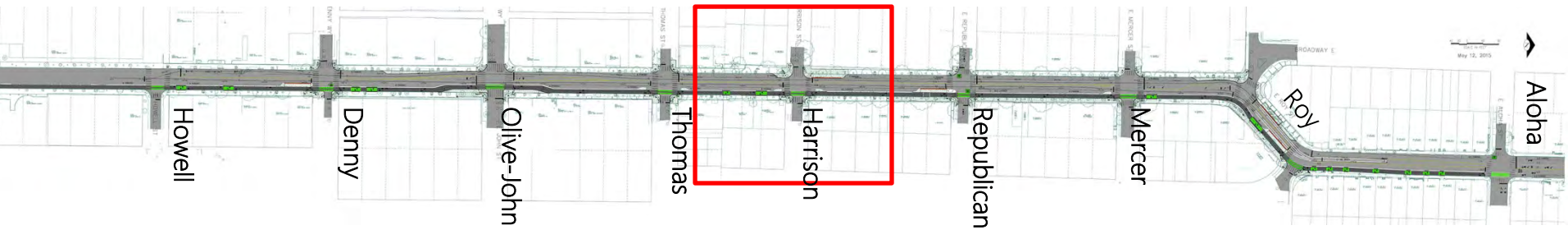
Streetcar Stop Configuration

420 BROADWAY E
TL 685070080



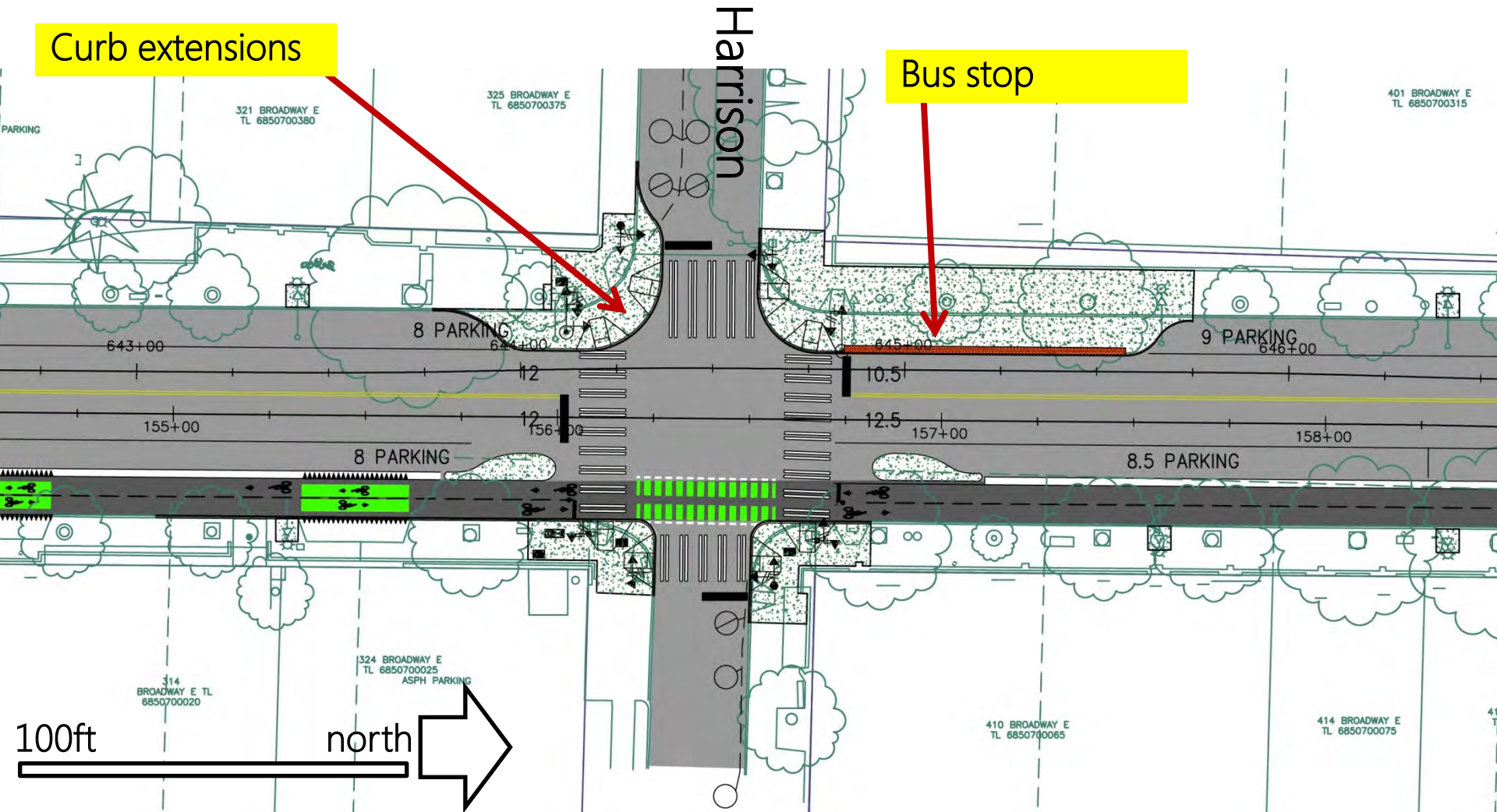


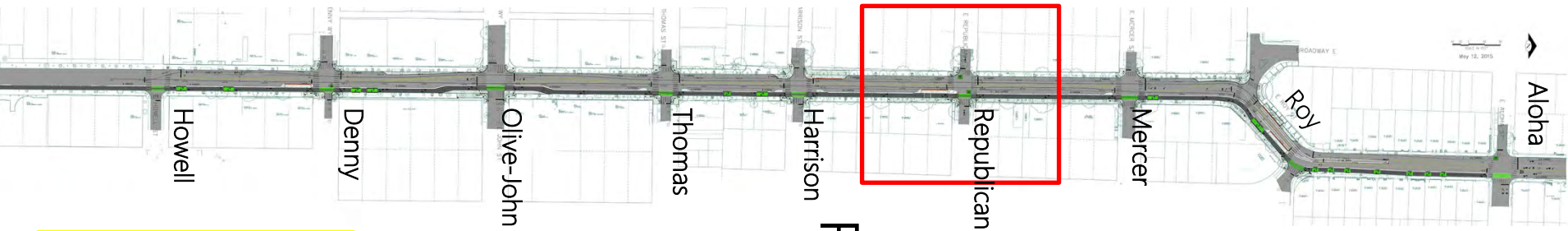




Curb extensions

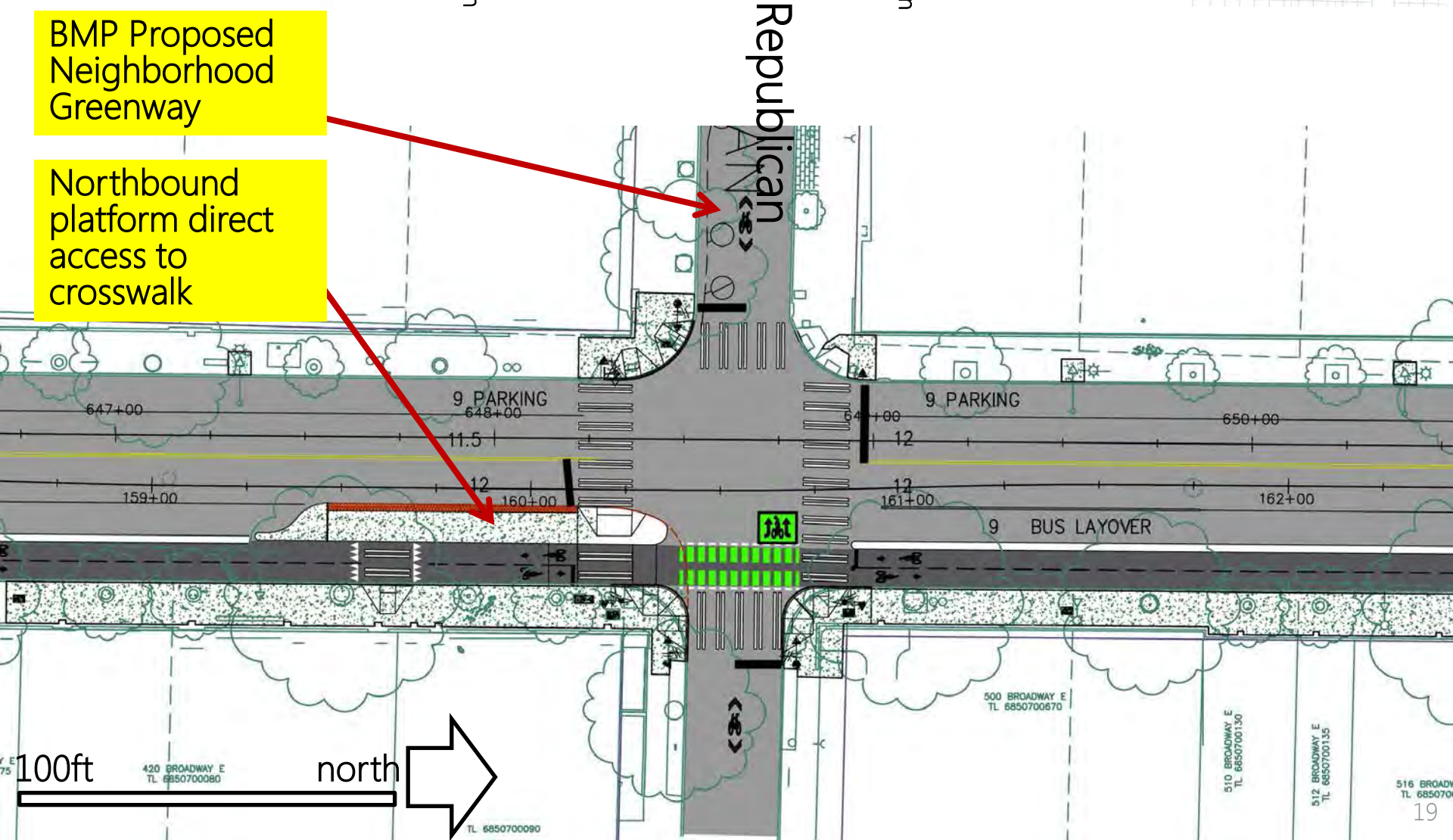
Bus stop

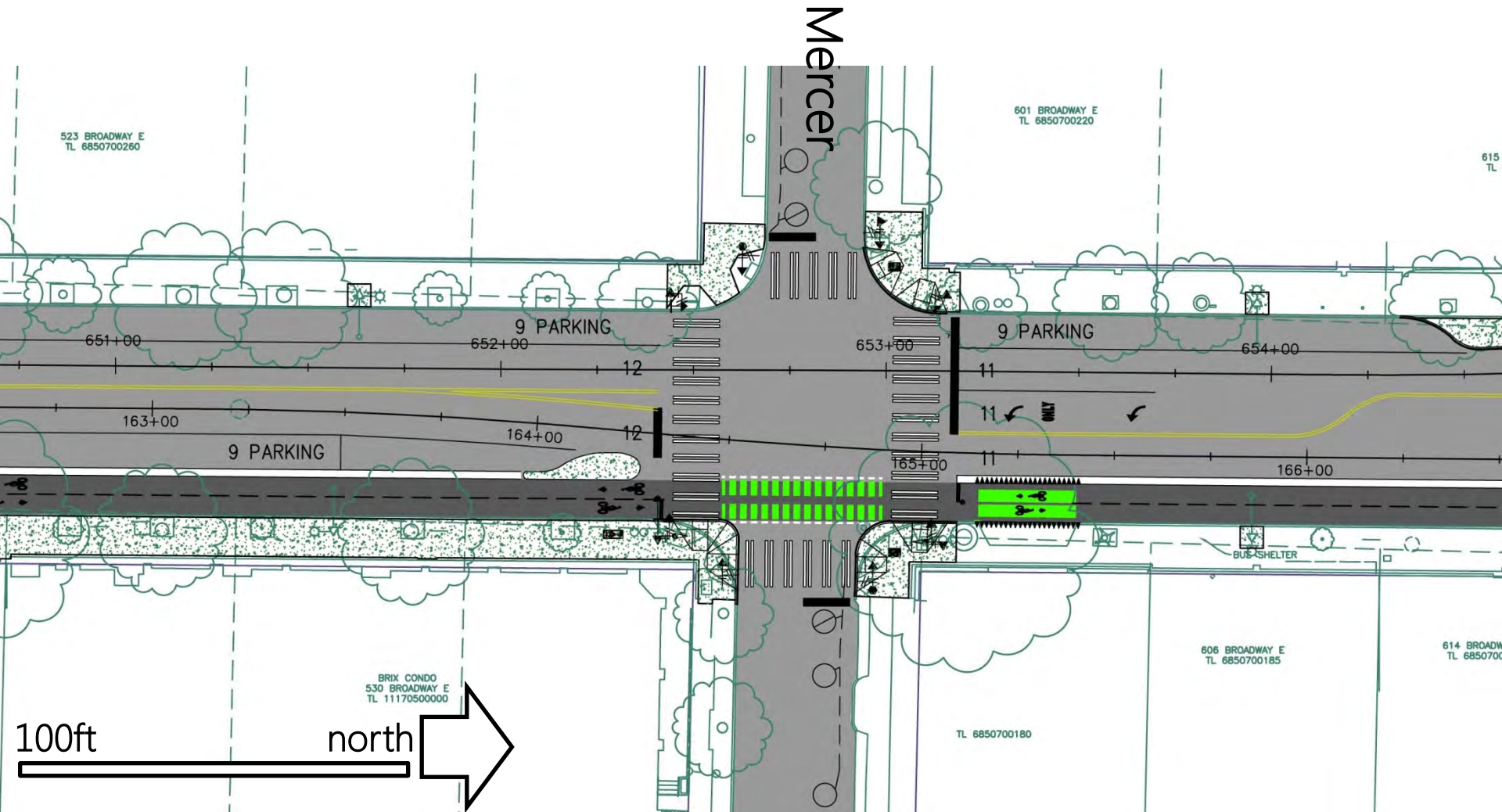
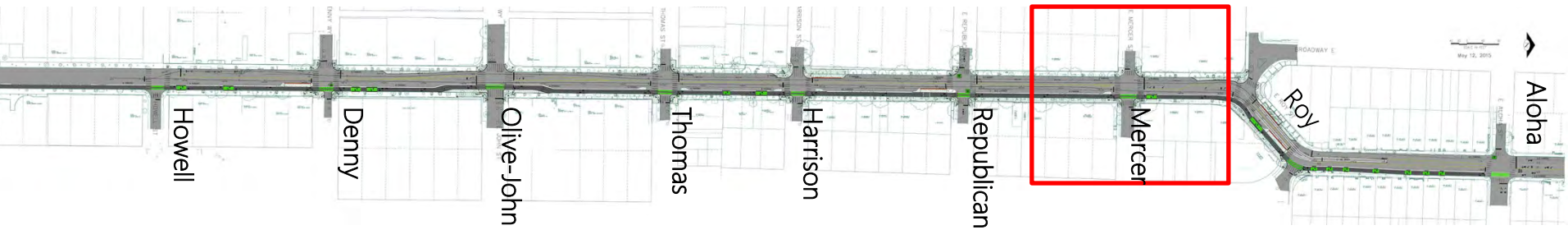


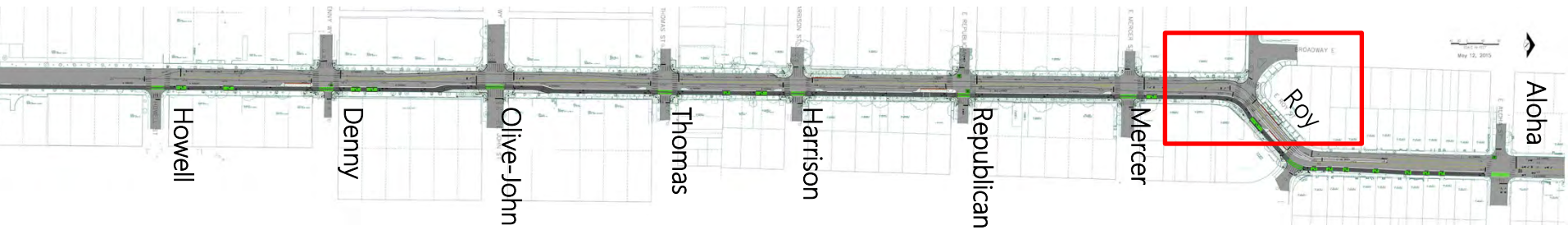


BMP Proposed Neighborhood Greenway

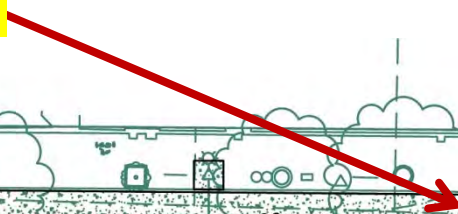
Northbound platform direct access to crosswalk



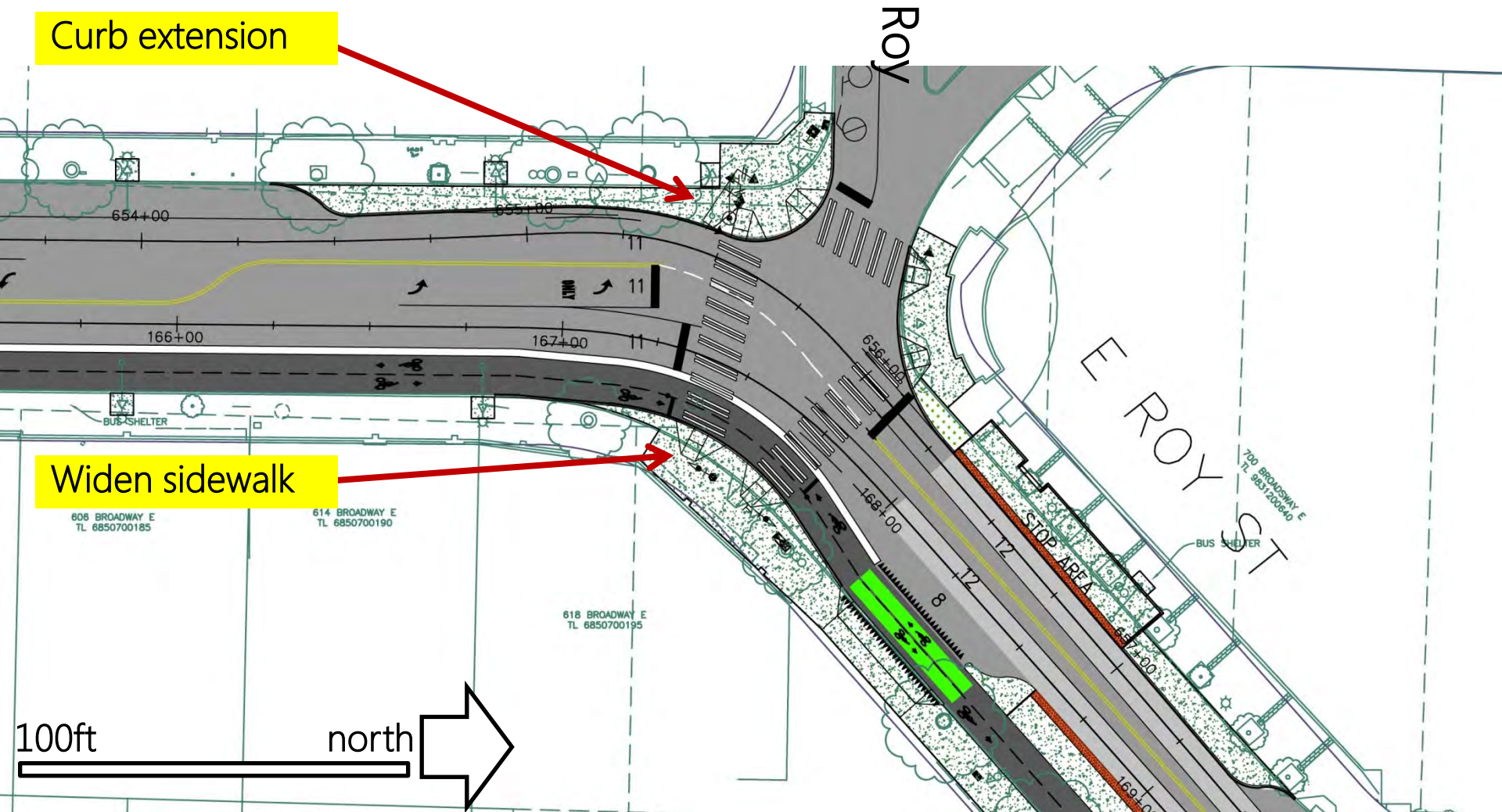


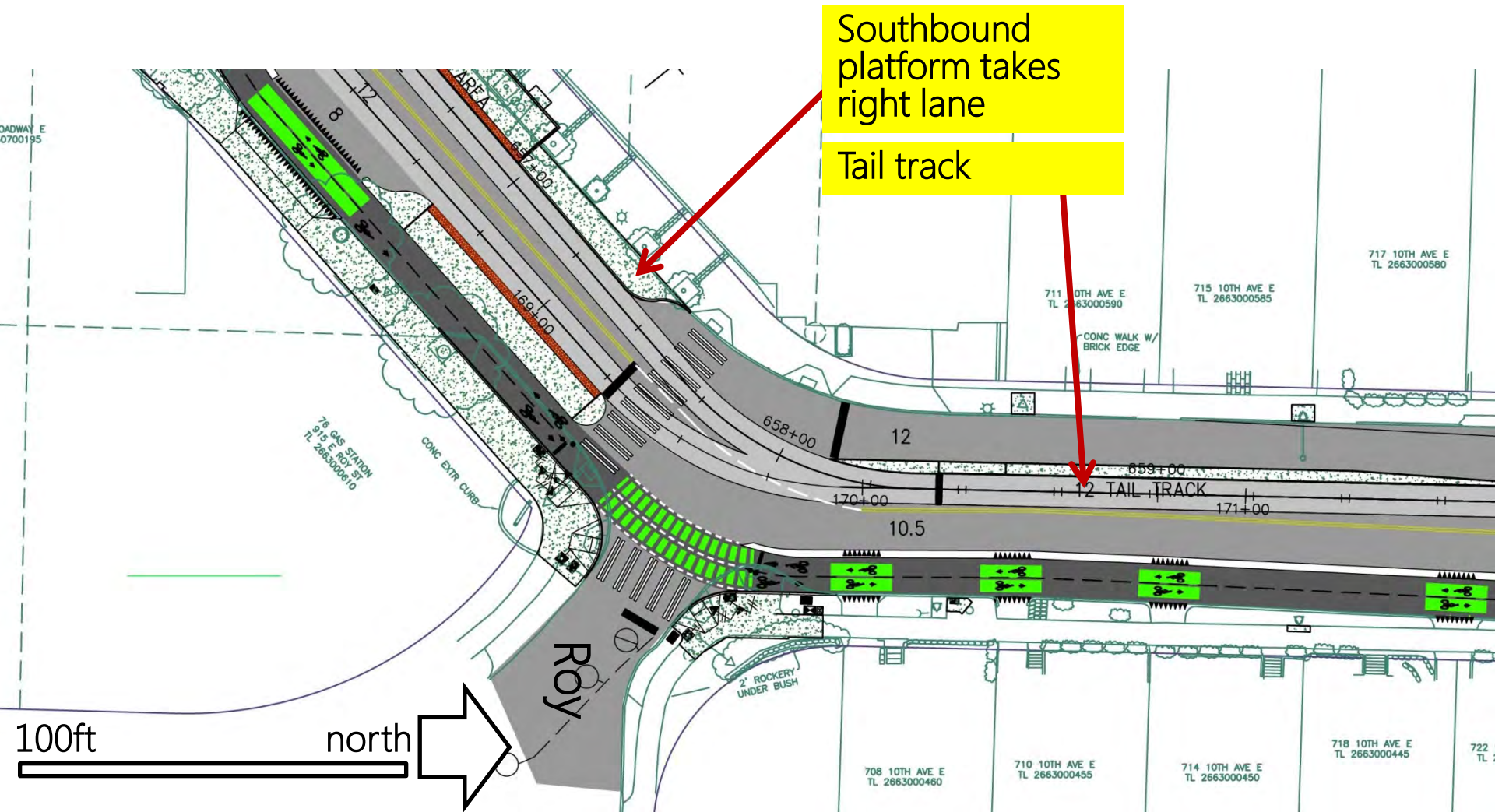
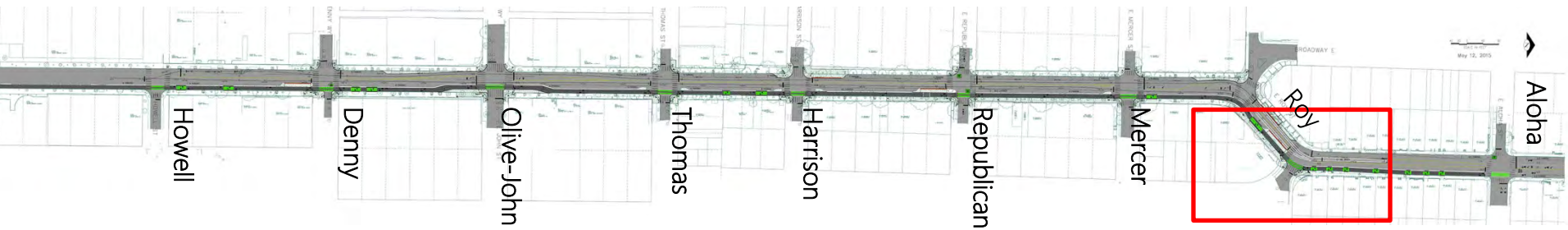


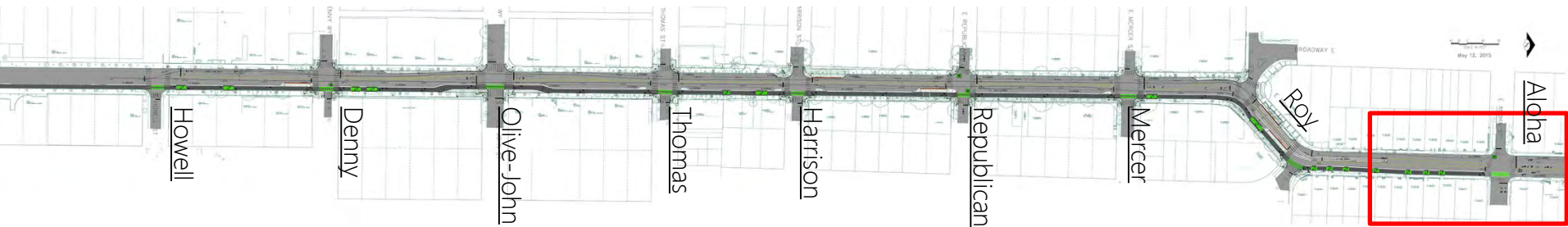
Curb extension



Widen sidewalk

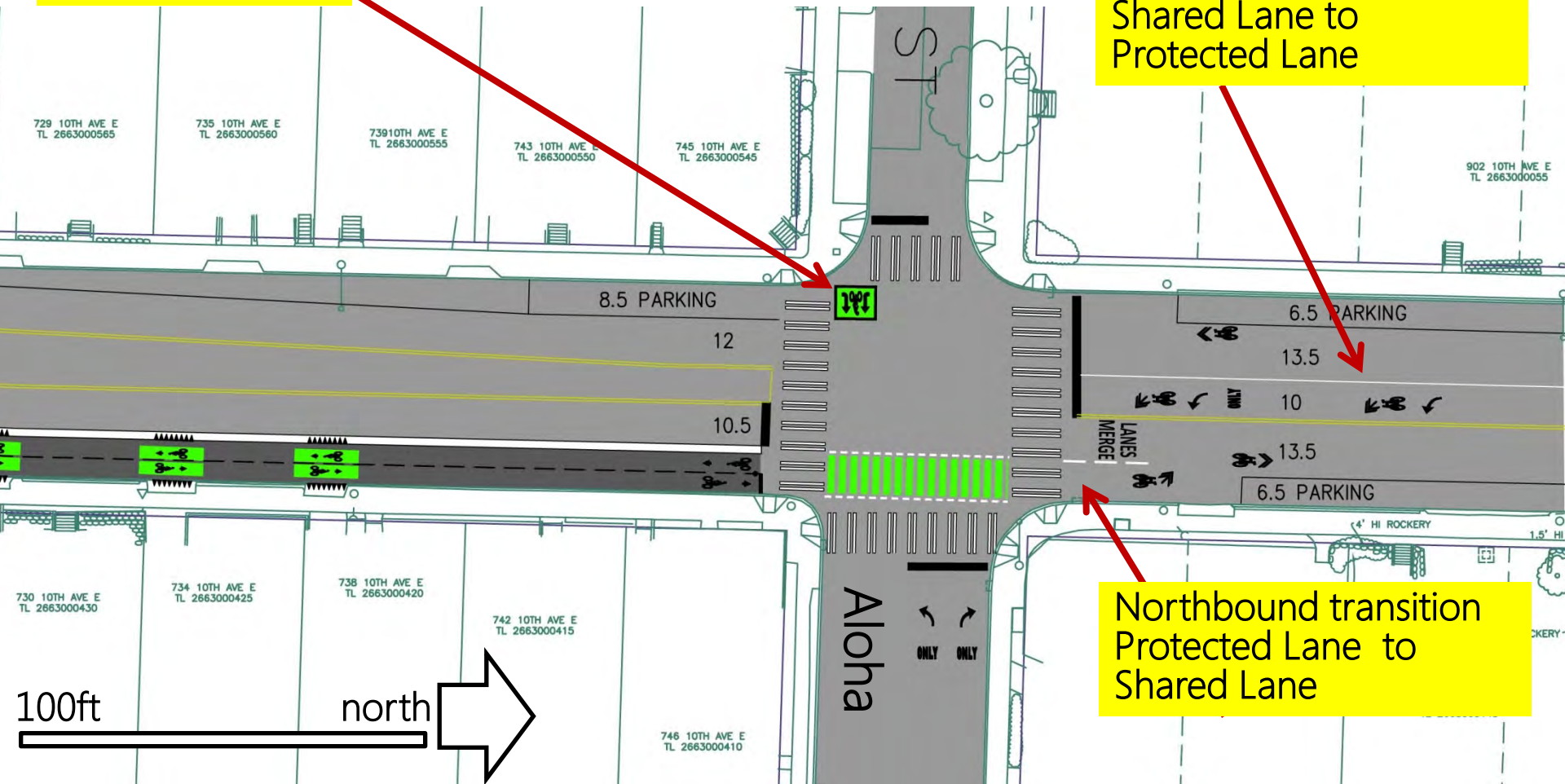






Turn box

Southbound transition
Shared Lane to
Protected Lane



Northbound transition
Protected Lane to
Shared Lane

Next steps

June	First Hill Streetcar Vehicle Testing
July 2015	60% Design Complete
End of 2015	90% Design
2016	Ready for Construction
TBD	Start Operations

Questions?

Art.Brochet@seattle.gov | 206.615.0786

<http://www.seattlestreetcar.org/broadway.htm>

<http://www.seattle.gov/transportation>

