



Waterwise Garden

Bellevue Botanical Garden



Georgia O'Keefe, 1925
writing about her petunias:

“I said to myself, I'll paint what I see.

What the flower is to me, but I'll paint it big and they will be surprised into taking time to look at it.

I will make even busy New Yorkers take time to see what I see of flowers.”











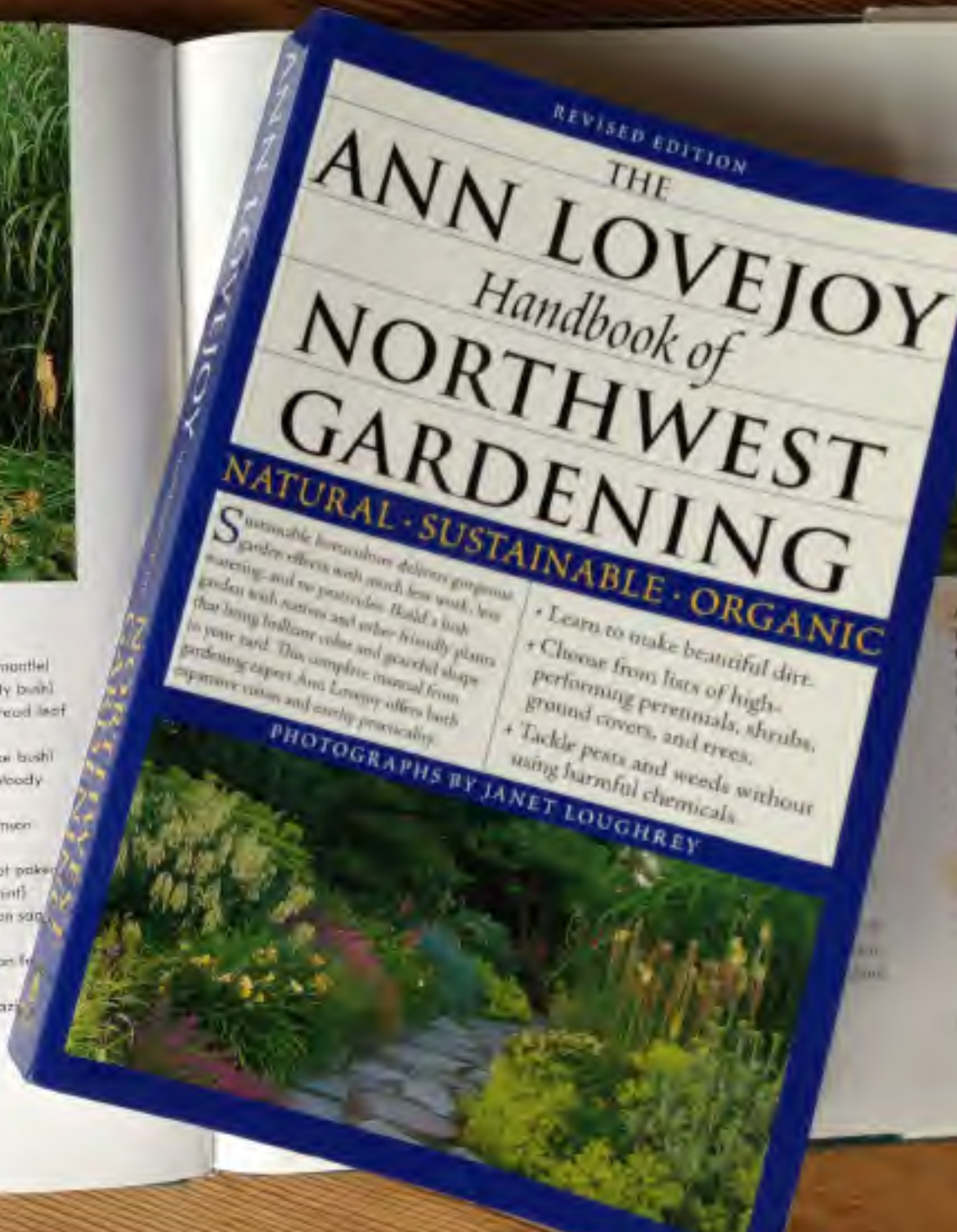


The Bellevue Botanical Garden is a rising star in a region of great gardens: a visit is stimulating and instructive. Where hot-colored flowers set the border ablaze, big clumps of bronze-red daylilies with amber throats, red-hot poker (*Kniphofia*) and greater Crocosmia 'Lepida' are kindled by waroch-leaved berry shrubs (*Berberis*). A few yards along, the heat is turned down a little, and a yellow segment depends heavily on the golden foliage of arching golden sedge (*Carex nictitans* 'Aurea') and golden creeping fern (*Lyneochia nemoralis* 'Aurea'). At first glance,

the flowers often draw the most attention, but with only a little more observation, the many beautiful shapes, colors, and textures of the plants not in flower show their great strength and value to the border.

True xeriscaping, or dry gardening, is difficult in the Pacific Northwest because of our wet winter and spring. But with our dry summer weather, water-wise gardening is superb for any area, whether or not watering restrictions apply. One section of the Bellevue Botanical Garden is devoted to plants that require little watering. Here are some useful flowering plants for the water-wise garden:

- *Alchemilla mollis* (lady's mantle)
- *Buddleia davidii* (butterfly bush)
- *Coreopsis verticillata* (thread leaf tickseed)
- *Cotinus coggygria* (smoke bush)
- *Gaillardia sanguinea* (bloody cranesbill)
- *Knautia macedonica* (crimson scabious)
- *Kniphofia uvaria* (red hot poker)
- *Nepeta x faassenii* (catmint)
- *Salvia officinalis* (common sage)
- Sedum species
- *Sida rhomboides* (Mexican fan grass)
- *Verbena buxariensis* (Brazilian verbena)



REVISED EDITION

THE
ANN LOVEJOY
Handbook of
NORTHWEST
GARDENING

NATURAL · SUSTAINABLE · ORGANIC

Sustainable horticulture delivers gorgeous gardening effects with much less work, less watering, and no pesticides. Build a lush garden with natives and other friendly plants that bring brilliant color and graceful shape to your yard. This complete manual from gardening expert Ann Lovejoy offers both extensive vision and earthy practicality.

- + Learn to make beautiful dirt.
- + Choose from lots of high-performing perennials, shrubs, ground covers, and trees.
- + Tackle pests and weeds without using harmful chemicals.

PHOTOGRAPHS BY JANET LOUGHREY





Patricia Burgess, Project Manager
Bellevue Utilities
and Bellevue Parks Department



<http://www.bellevuewa.gov/waterwise-garden.htm>

Gratitude for Volunteers!!!





get the most from
what we've learned

-
- design it right - good planning is the *best* practice
 - prepare the site right & plant for success
 - expect change - it's a garden!!!











Bellevue's Waterwise Garden. It's beautiful.... it's enlightening....it's yours to explore.

The Waterwise Garden is full of water-saving and work-reducing tips for gardens of any size, age or style. Visit the Waterwise Garden, and see what's growing on.

design it right

- **know your site** - look closely
- **have a concept** - for water use & maintenance

BELLEVUE: GOING GREEN

What to Look For:

- Sunny and shady areas
- "Hot spots" on south and west sides of slopes, walls, or fences
- Shallow, rocky, or compacted soil
- Poorly-drained and seasonally wet spots
- Slopes and areas outside fences that are hard to mow or access
- Dry spots under roof eaves or evergreen trees
- Views to block or preserve
- Paths needed for home and garden maintenance
- Special plants you want to keep and problem plants or lawn to remove

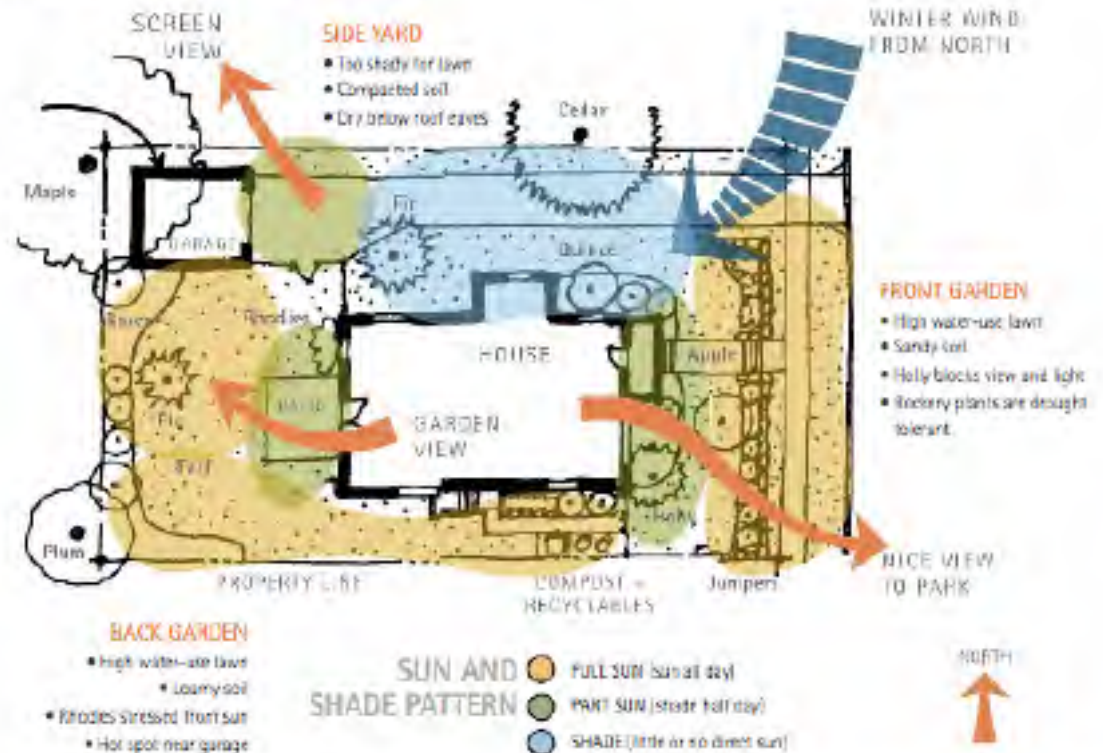


Where to Dig—Dig several one-foot deep holes around the yard to check soil quality and depth and any problem spots. See the Soil guide for help identifying soil conditions and problems.

know your site

- sun + shade patterns
- soil conditions
- existing vegetation
- drainage patterns
- circulation
- views
- programmatic considerations

LOOK AT WHAT YOU HAVE





Short's House - Visitor's Center
East side entry to garden





North side “back” of the Visitor’s Center



transition from Woodland

Southwest side of
Short's Visitor's Center





Southwest side of
Short's Visitor's Center

concept

Garden Map 12.09

- diversity of planting environments & experiences, similar to residential garden
- provide a guide as the garden changes over time

West Edge:
Part-Shade Border
& Lawn Alternatives

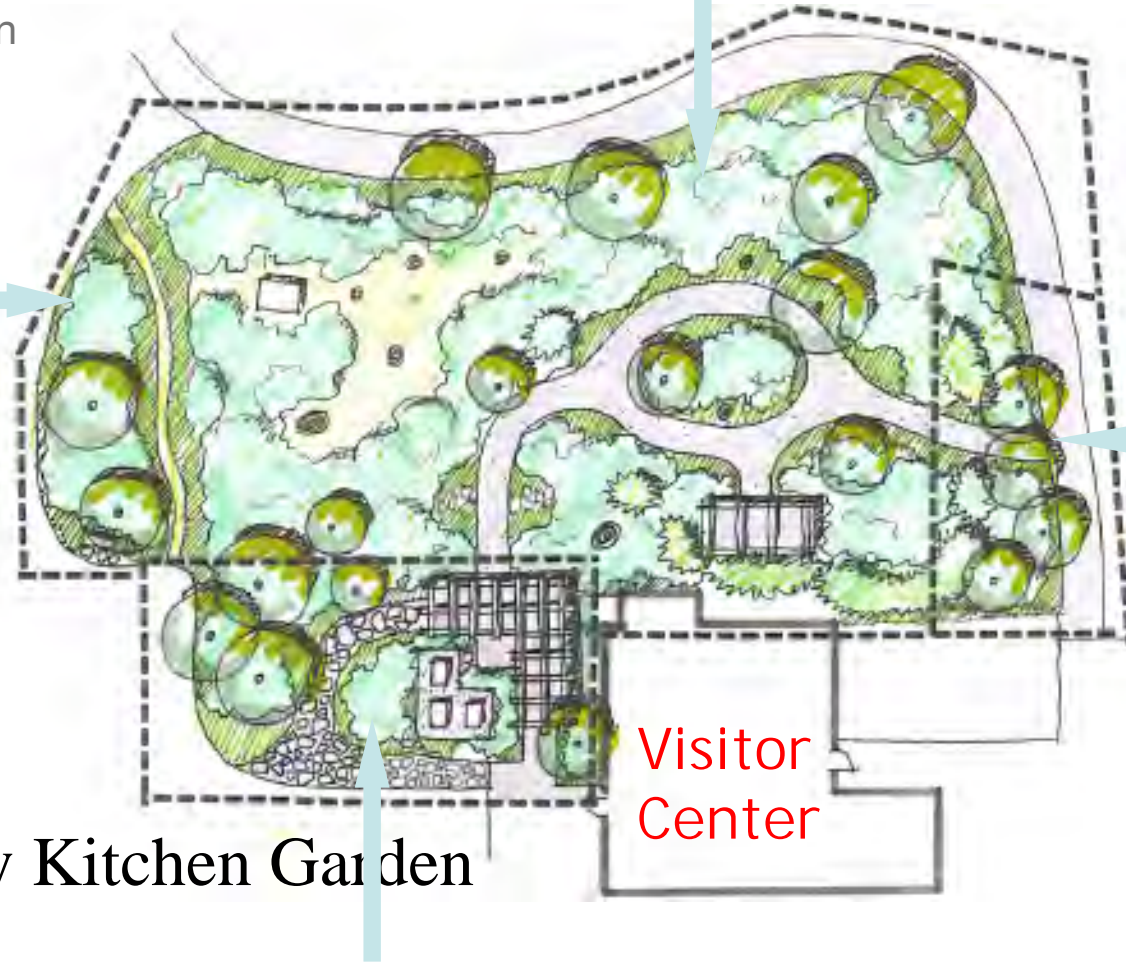
Sunny Kitchen Garden

Shady Woodland

Visitor Center

North 

East Edge:
Part-Sun
Entry Grove





the Entry Grove



the Woodland





Kitchen Garden





Kitchen Garden





prepare

- amend soil
- use efficient irrigation
- apply mulch, again & again..



plant it right

- honor the concept
- zone plants by water use
- space plants honestly
- group by maintenance needs
- keep an eye out as the site settles & changes



honor the concept

Guess who needs summer water?



(when planting) space plants honestly



zone for water use & maintenance



field adjust when planting



keep an eye as site settles



expect change!

- plans change
- uses evolve & vary over time
- weather happens
- disease strikes
- plant's natural life span
- critters show up



people impacts





disease strikes

before



after



....& a new tree is planted





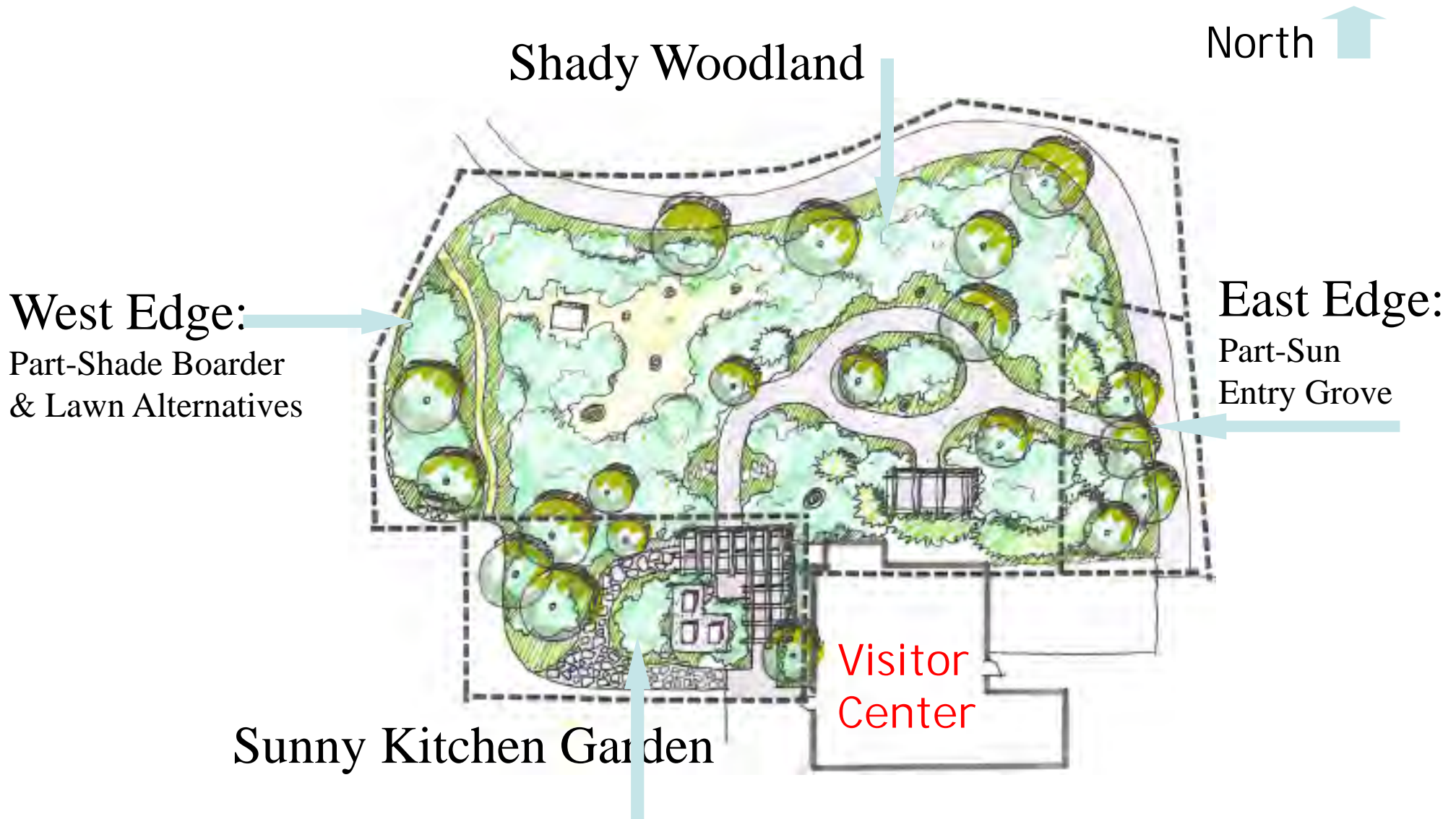
too sunny for Sarcococca





loss from wind storm damage

Garden Map 12.09



conditions changed and....



....Cercis 'Forest Pansy' was vulnerable



replanted in Woodland





gourmet critter cages



plants

- the garden is organized by microclimates
- each area has a distinct plant palette



Plan your visit	Our Gardens	Collections Search	Membership	Giving + Partners
Events + Calendar	Trillium Store	Volunteer	Learning in the Garden	Going Green



Waterwise Garden



Construction Photos

Fun Volunteer Opportunity!
 Events
 During Current Construction

Discover an alluring landscape that's healthier for families and local eco-systems. The Waterwise Garden showcases a diverse array of plants that delight the senses, attract native wildlife, and conserve resources. A visit to its shady pathways confirms that splendid gardens don't require large amounts of water or garden chemicals that can harm children, pets, and the Puget Sound. This award-winning display offers rich possibilities for your home garden and a healthier environment.

In the Waterwise Garden, you'll learn





entry grove

part sun / shade

serviceberry - all seasons award!!









white, pink, yellow





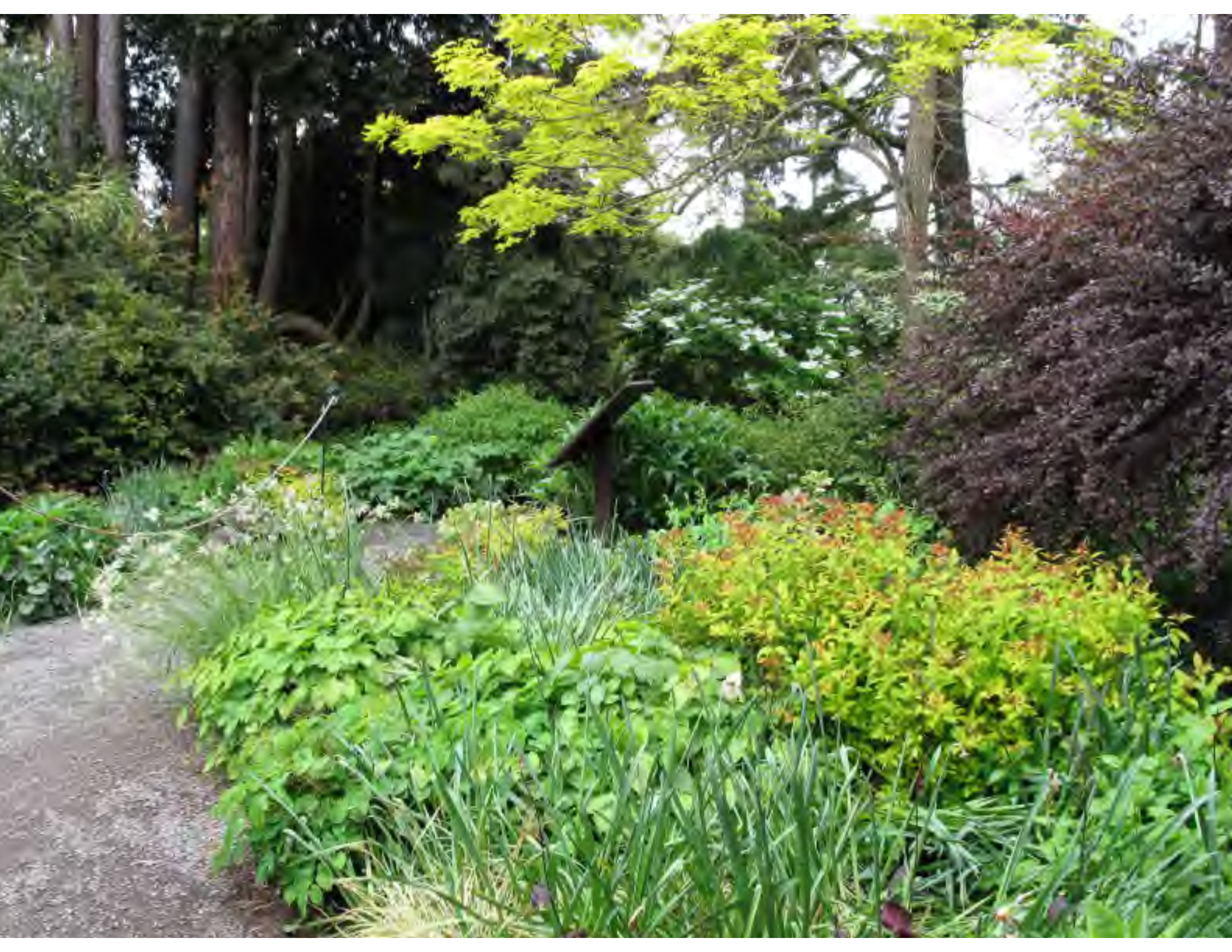
woodland

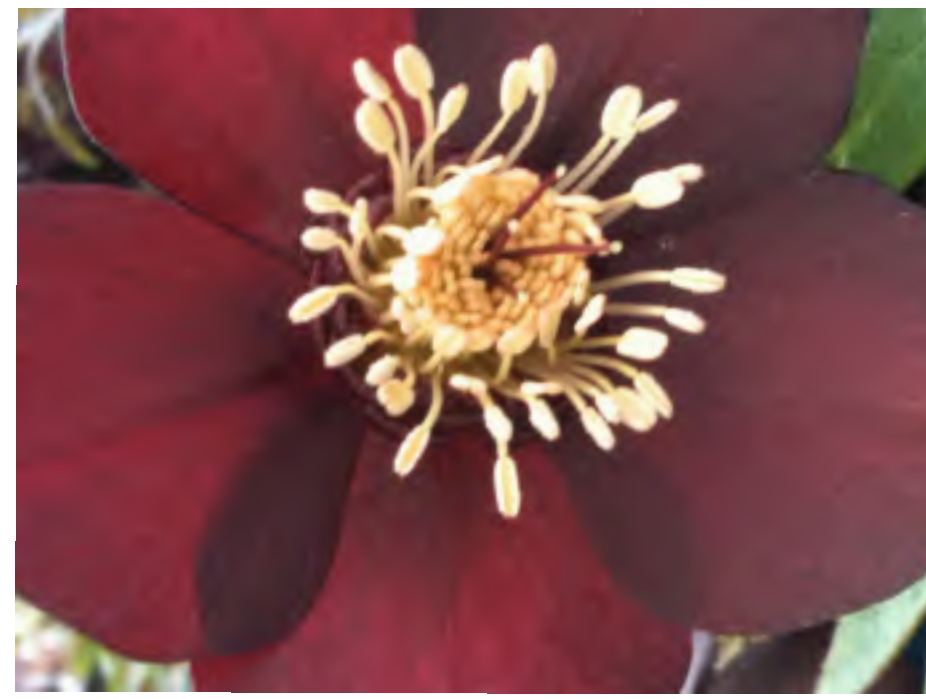
terrific plants for dry shade....
and increasing amounts of part sun





native colors: greens, reds, golds













North border - "the back 40"
low maintenance zone







plants that misbehave



Orchid Growing Secrets+

www.ultimateorchidguide.com/Growing

The Most Important Things You Need To Know All About Growing Orchids!

Find a plant:



Plant Guide

search the plant guide



OR [Browse All Plants](#)

Printer Friendly

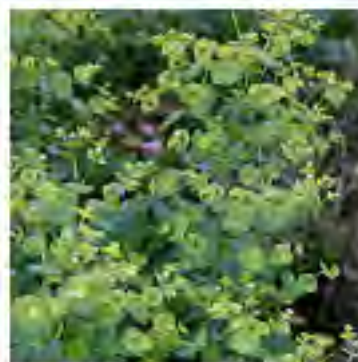
Add to My Favorites

Share This

Like

Print

Euphorbia amygdaloides var. *robbiae* (Mrs. Robb's bonnet)



PlantsIllustrations.com/robbiae

Be the first to rate this plant



Plant Showcase

from our ad partners

Hardiness Zones:

1	2	3	4	5	6	7	8	9	10	11
---	---	---	---	---	---	---	---	---	----	----

Botanical Name: *Euphorbia amygdaloides* var. *robbiae*

yew-FOR-bee-ah ah-mig-dah-LOY-deez variety ROB-bee-ay

Common Name: Mrs. Robb's bonnet

Synonyms: *E. robbiae*

Genus: *Euphorbia*

This variety has dark, glossy evergreen leaves arranged in tight rosettes, and it produces yellow-green bracts in mid-spring and early summer.

Noteworthy characteristics: This plant spreads rapidly (it may be invasive), and it is difficult to remove. Milky sap may cause irritation to skin and severe discomfort if ingested.

Care: It can take a wide range of conditions: moist or dry soil in full sun to shade.

bamboo

- running vs. clumping
- valuable screen for the right spot
- requires long term commitment
- annual check-up on root barrier & plants
- every 5 years +/- dig out interior and divide
- dwarf varieties are great



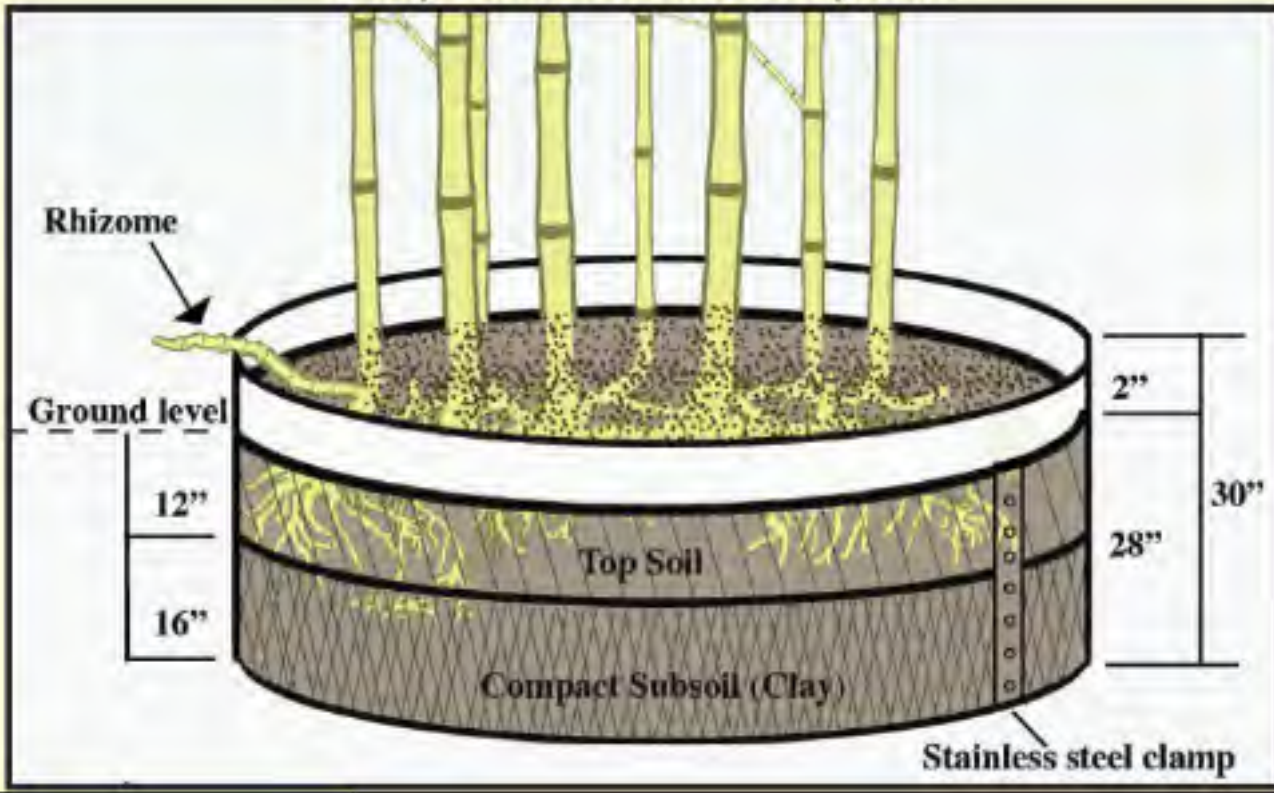


TERWIS
RDENIN

AGLATIVE
MURRAY

0 PART. HE WATER SWAN

Fully Enclosed Barrier System



install root barrier for all running types, including dwarf varieties



kitchen garden

full sun

summer water use zones





“fun in the sun”: purple, blue, yellow, orange you name it!













plants that misbehave



life span of some wonderful plants is brief





west edge border

mixed sun & shade
alternatives to turf





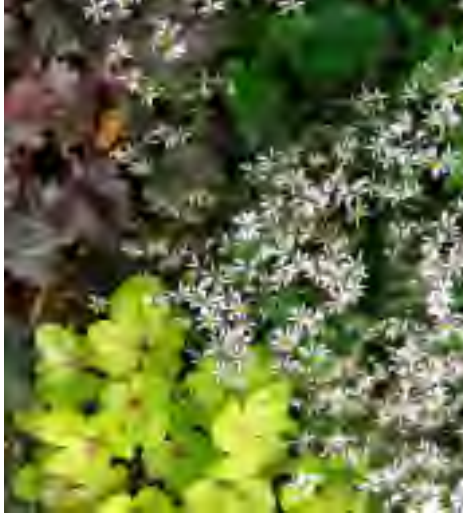
Helleborus . Alchemilla . Galium

alternatives to turf





yellow, white, bronze, purple, red, pink







“.....I will make even busy ~~New Yorkers~~ Puget Sounders take time to see what I see of flowers.”



Volunteer in Bellevue's Waterwise Demonstration Garden!



Why join?

Adult volunteers keep the garden blooming for visitors and in return:

- 👉 **Learn** natural gardening techniques that can be used in your garden.
- 👉 Get **hands-on experience** soil building, composting and caring for plants through the growing season.
- 👉 Meet people who **share an interest** in gardening and being outdoors.
- 👉 **Have fun** while contributing to resource conservation goals.

Volunteer days are the 1st and 3rd Wednesdays of each month from 1-3 p.m. from spring to fall. No experience necessary. Training provided! The garden is located within the Bellevue Botanical Garden at 12001 Main Street.

To sign up today, complete and return this card or contact Patricia Burgess at pburgess@bellevuewa.gov or call 425-452-4127.

Name (please print)

Address

City, State, Zip

Phone (area code)

Email



come be a volunteer!!!
or visit us on the 1st or 3rd Wednesday