

KAREN KIEST - Designing Healthy Landscapes:

Site, Function & Process

PROJECT TYPES: **SITES**

- campus & civic - **back east, california, ubc**
- park - **madison valley stormwater facility, children's park**
- housing- **SEATTLE GREEN FACTOR: the chloe, coppins well**
- Residences – **madison park residence**

FOR EACH PROJECT: **FUNCTION**

- identify - soil, water & plant relationships relative to landscape function

FOR EACH PROJECT: **PROCESS**

- describe – intricate dance between **clients, contractors and maintenance staff and DESIGN PROCESS**

BACK EAST – Lots of Lawn

Residences



Lawn and More Lawn



Lush Landscapes

Campuses



Campuses – Lawn + Trees

CALIFORNIA – San Jose State University



San José State
UNIVERSITY



Develop and maintain lawns only where they are likely to be used

KAREN KIEST | LANDSCAPE ARCHITECTS

KK | LA

SEATTLE – University of Washington Law School



San José State
UNIVERSITY

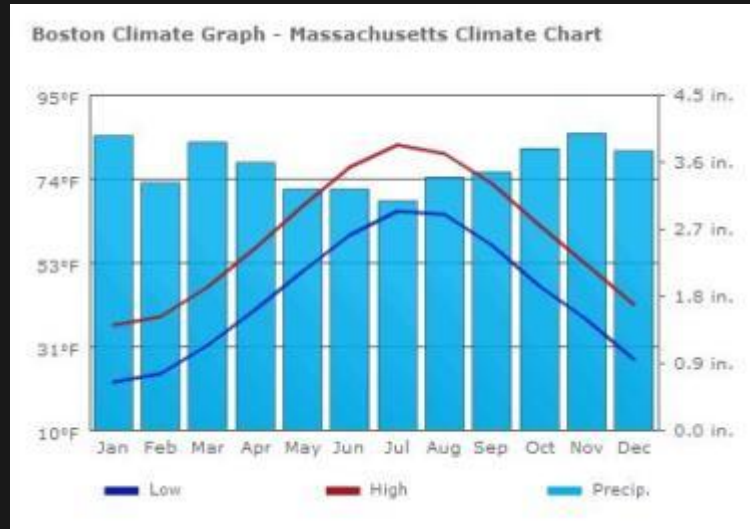


A bit of a Mix: Lawns at Primary Walks and Courtyards, Shrub Beds to Edge

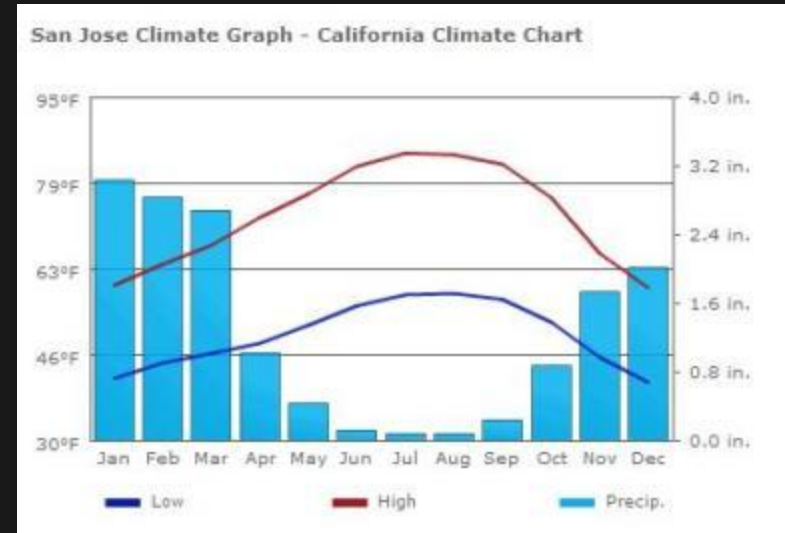
KAREN KIEST | LANDSCAPE ARCHITECTS

KK | LA

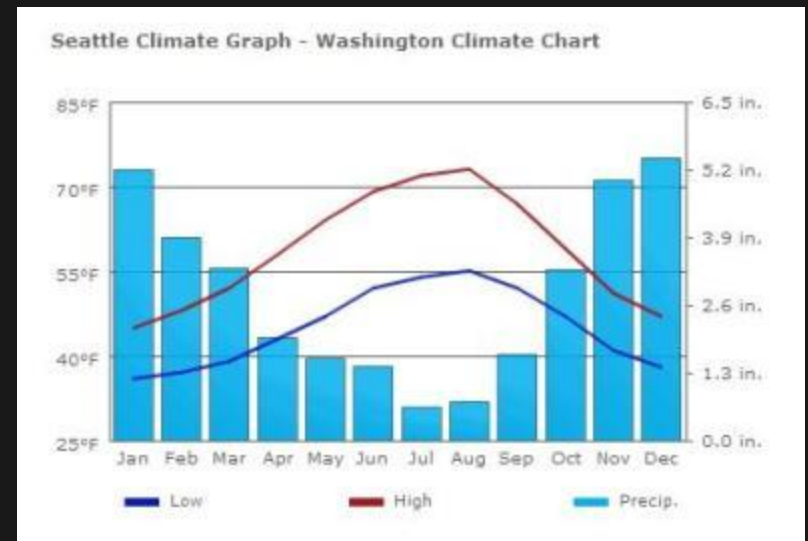
CLIMATE – Rainfall and Temperature



Boston



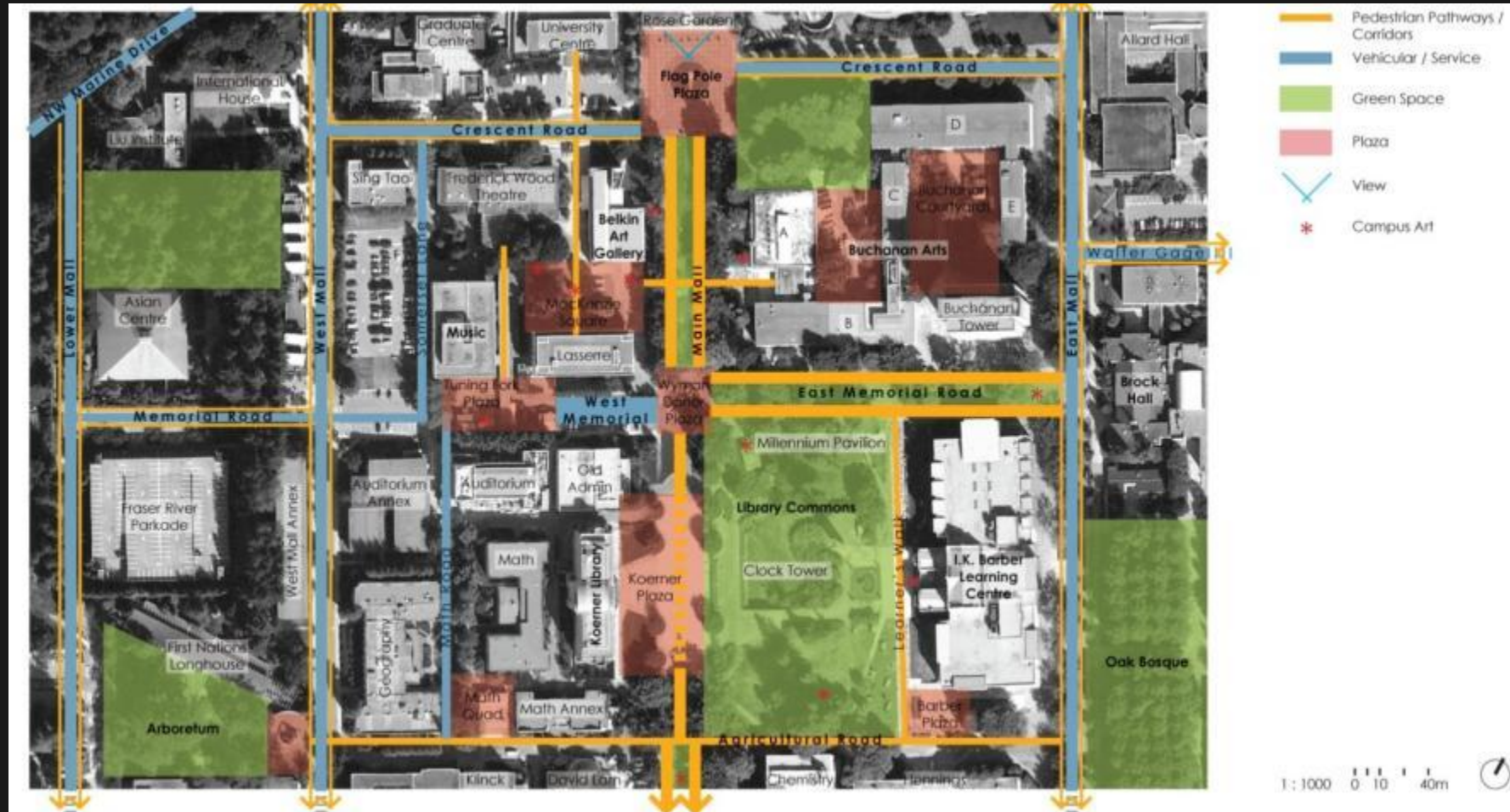
San Jose



Seattle

VANCOUVER BC: UBC Public Realm Plan

Public Realm Plan: DESIGN FOR PEOPLE



- Agricultural Road, Main Mall, Memorial Road, Health Sciences Courtyard

UBC PUBLIC REALM: Agricultural Road



Stormwater swales



Before: Asphalt



Pavers – colour bands

KAREN KIEST | LANDSCAPE ARCHITECTS



After: Lawn Action!

KK | LA

UBC PUBLIC REALM: Memorial Road



Before



Design



After : Cherry Trees & Stormwater Swale

KAREN KIEST | LANDSCAPE ARCHITECTS

KK | LA

UBC PUBLIC REALM: Health Sciences Courtyards



Before: Pavement & Puddles



After : Seating and Subdrainage

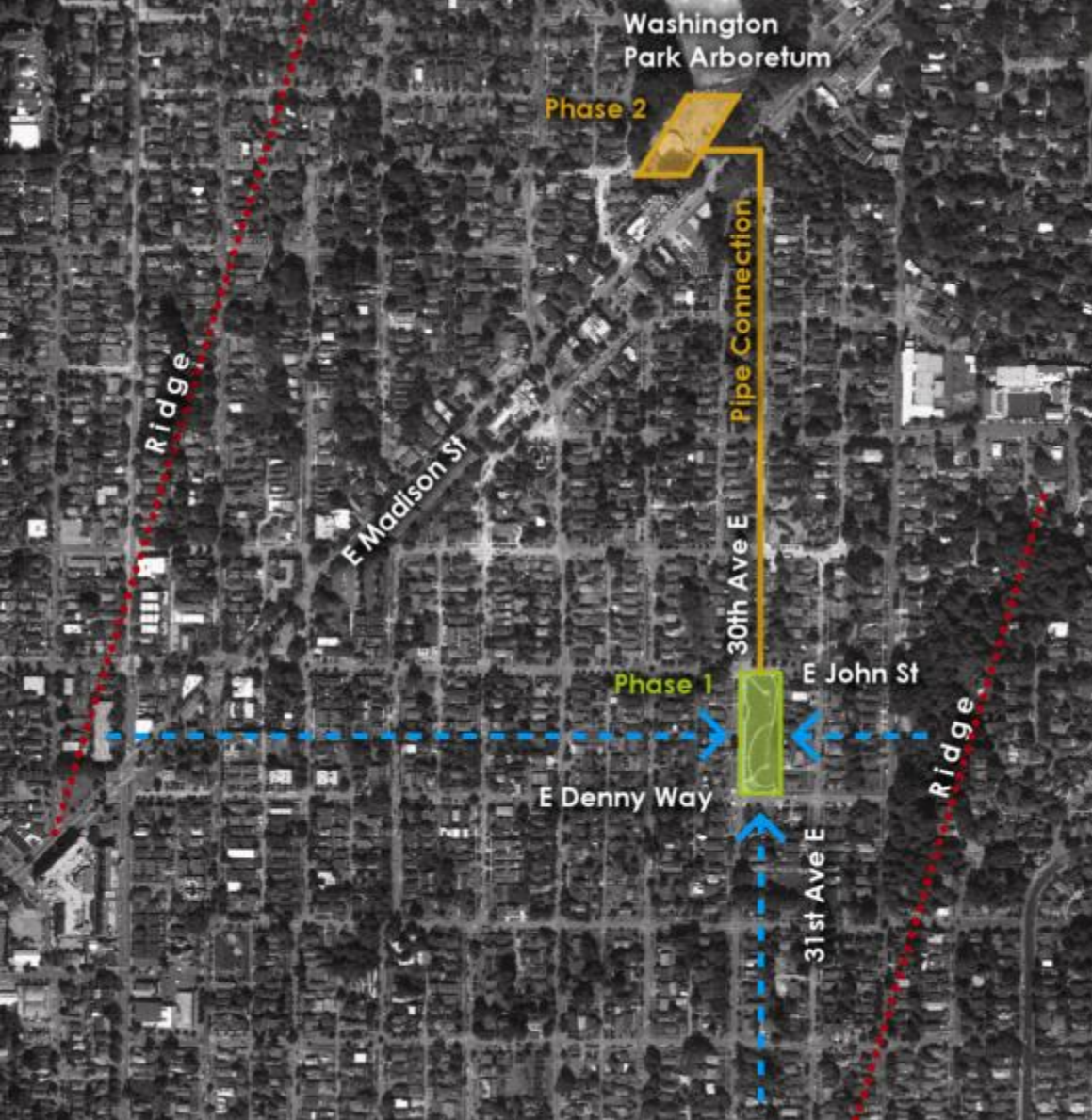
FROM 'PIT' TO 'PARK': Madison Valley Stormwater Facility



A story of stormwater and
neighborhood repair



in December 2006, a 150-year storm event created a surge of water, mud and debris that clogged storm drains and claimed the life of a valley resident, trapped in her basement by floodwaters.



Madison Valley Stormwater Project Phase 1 and Phase 2

KAREN KIEST | LANDSCAPE ARCHITECTS

The 'pit' before the improvement project

KK | LA



site plan & panorama looking north



seasonal creek



gabion bridge crossing



community gathering space –SPU is willing to let the grass brown out....

UBC PUBLIC REALM: Health Sciences Courtyard



underlying function - In an extreme storm event the site can fill to the brim and drain in a matter of hours



back tomorrow

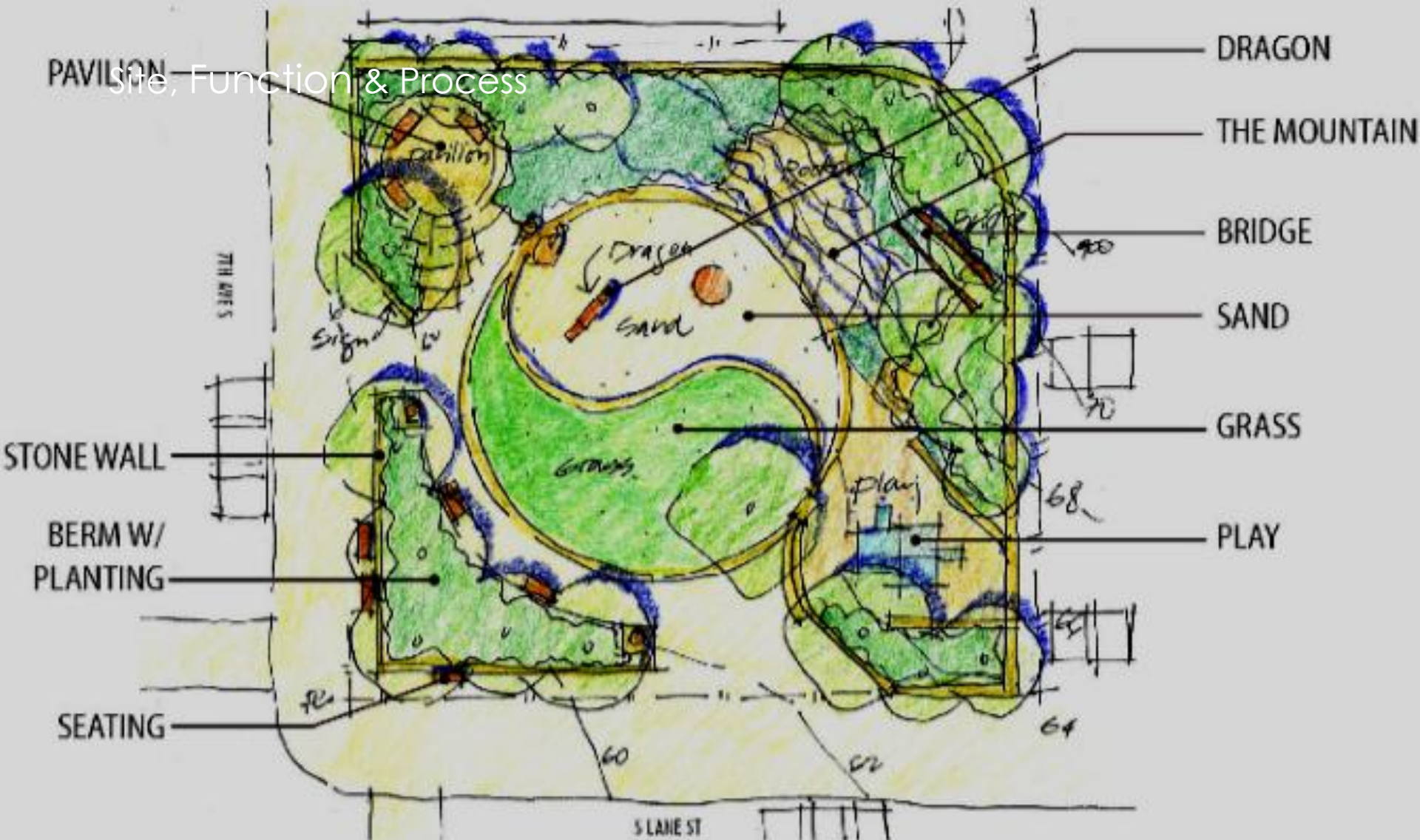
International Children's Park 國際兒童公園



International Children's Park 國際兒童公園



International Children's Park: Original Plan



International Children's Park: Plan

SHELTER
LOCATION

涼亭

TABLES &
CHAIRS

桌椅

PLANTING

植栽

TAI CHI/
GATHERING

太極/聚集區

SEATING

坐位

DRAGON
龍

SAND
沙堆

OVERLOOK
觀景台

SEATING
坐位

GRASS
草坪

PLAY AREA
遊樂區

PLANTING
植栽

7TH AVES

S LANE ST



International Children's Park: Plant List 植栽

<u>Common Name</u>	<u>Botanical Name</u>		
Kousa Dogwood	Cornus kousa	 <p>CHINESE PLUM</p>	
Ginkgo	Ginkgo biloba		 <p>GINKGO</p>
Flowering Plum	Prunus mume		
Camellia	Camellia sasanqua	 <p>KOUSA DOGWOOD</p>	
Wintersweet	Chimonanthus praecox		 <p>DAYLILY</p>
Hakone grass	Hakonechloa macra	 <p>HOSTA</p>	
Daylily	Hemerocallis cv.		 <p>HYDRANGEA</p>
Hosta	Hosta	 <p>WINTER JASMINE</p>	
Hydrangea	Hydrangea macrophylla		 <p>HAKONE GRASS</p>
Winter jasmine	Jasminum nudiflorum	 <p>HEAVENLY-BAMBOO</p>	
Creeping lilyturf	Liriope spicata		 <p>BLACK BAMBOO</p>
Heavenly-bamboo	Nandina domestica	 <p>SHIBATAEA BAMBOO</p>	
Black bamboo	Phyllostachys nigra		 <p>WINTERSWEET</p>
Azalea	Rhododendron sp.	 <p>CAMELLIA</p>	
Sibatea Bamboo	Shibataea kumasaca		 <p>AZALEA</p>

International Children's Park: Function!



During Construction



Opening Day



Moon Festival

HOUSING: The Chloe



Green Roof

Doggie Lawn

Entry Courtyard: Lush Landscape

HOUSING: Coppins Well



Rooftop: Less Green More Bocce!



Green Roof Mats



Roof: Bit O'Green Streetscape: Lush Landscape



HOUSING: The Park at Othello Station



Green Roof: July - Plant it Full



Rooftop: August – Color Garden

KAREN KIEST | LANDSCAPE ARCHITECTS



Podium Level: Lush Landscape

KK | LA

RESIDENCE: Madison Valley Residence



Before



Sketch Plan



Design Elements

KAREN KIEST | LANDSCAPE ARCHITECTS



Plants

KK | LA

RESIDENCE: Madison Valley Residence



Before



After



Less Maintenance More Entertaining

KAREN KIEST | LANDSCAPE ARCHITECTS