

Tolt Dam Early Warning System Carnation Area Community Meeting

February 24, 2021

Meeting agenda

- Welcome
- Progress update – *Alex Chen, Deputy Director, SPU*
- Flood alert tools – *Jared Schneider, King County Office of Emergency Management*
- System replacement project – *Frank Coulter, Director, SPU*
- Community discussion – *Frank Coulter, Director, SPU*
- Next steps

Zoom tips and tricks

- You've entered the meeting on mute; please stay muted during the presentation
- Type your questions or comment into the chat
- Raise your hand to be called on to make a comment
- If you need technical support, email athomson@enviroissues.com or call 206-940-6013



South Fork Tolt Dam

- Earth fill dam, provides 1/3 of Seattle's regional water supply
- Seattle City Light hydroelectric facility
- ~11 River Miles to nearest homes
- ~14 River Miles to Carnation
- 24/7 surveillance and monitoring
- Daily visual inspections and instrument readings
- Safety and Security Plan
- Periodic engineering, federal and independent consultant inspections
- Emergency Action Plan, including siren system



Update since January 19 City Council meeting

- Listening and responding to your feedback
- Implemented ALERT King County text messages
- New operational protocols in place
- Monthly meetings with City of Carnation officials
- Regular updates at City Council meetings
- Additional community meetings
- New project website: <https://www.seattle.gov/utilities/neighborhood-projects/tolt-dam-emergency-warning-system>



King County Emergency Management

Jared Schneider

*Emergency Management
Program Manager – Hazard
Mitigation*

jaschneider@kingcounty.gov

206-205-4027

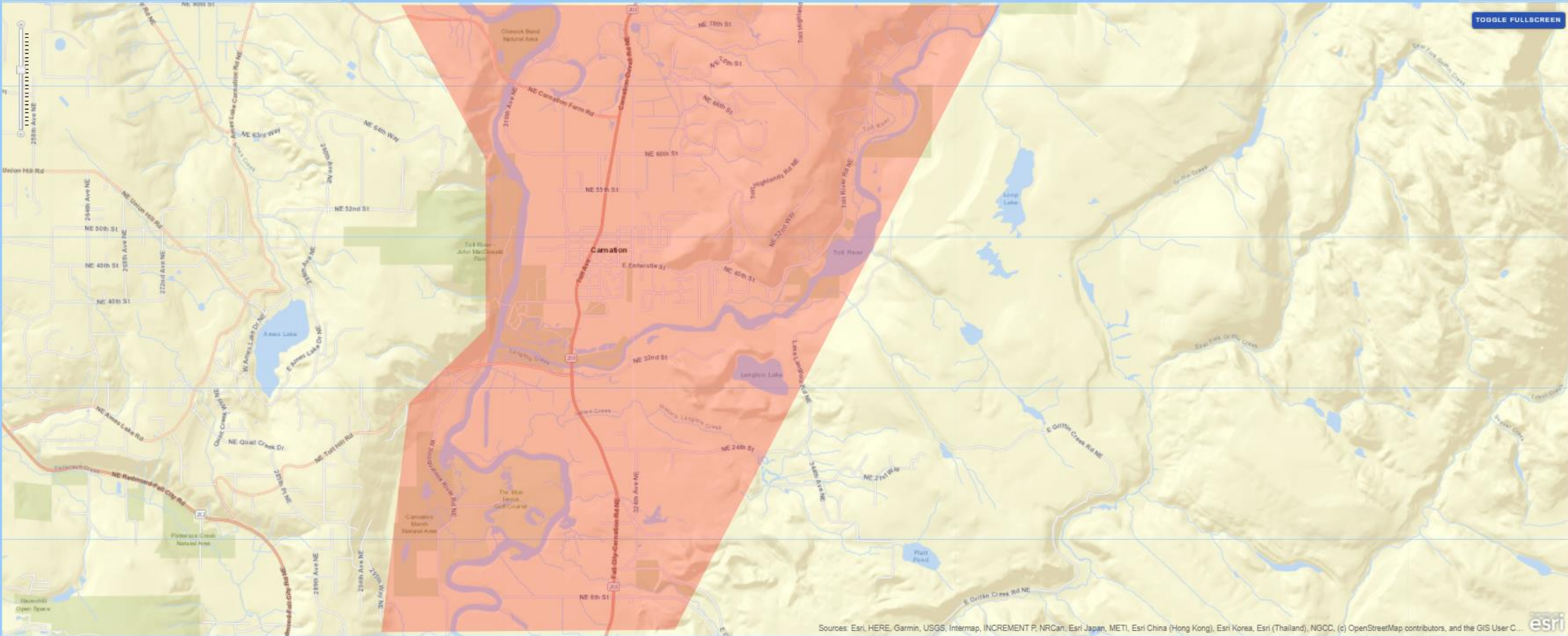


Alert & Warning

- Alert King County (Reverse 911)
 - Sends texts, calls, emails, TDD/TTY, and app notification to geofenced area
 - General messages - opt-ins, white pages, yellow pages
 - Emergency messages - 911 center database, opt-ins, white pages, yellow pages
- Wireless Emergency Alert (WEA)
 - Sends texts to all cellphones within geofenced area
- Emergency Alert System (EAS)
 - Three tone radio message

- Phone
- Text
- Email
- TDD/TTY





Sources: Esri, HERE, Garmin, USGS, Intermap, INCREMENT P, NRCan, Esri Japan, METI, Esri China (Hong Kong), Esri Korea, Esri (Thailand), NGCC, (c) OpenStreetMap contributors, and the GIS User C...

Sign-Up

Go To:

kingcounty.gov/alert

The screenshot shows the King County website's Emergency Management section. The navigation bar includes 'Home', 'How do I...', 'Services', 'About King County', and 'Departments'. A search bar is located in the top right. The left sidebar lists 'Emergency Management' options: 'COVID-19 Emergency Resource Requests', 'Preparedness', 'Hazards', 'ALERT King County' (highlighted), 'Emergency management professionals', and 'About us'. The main content area is titled 'ALERT King County' and describes it as a regional public information and notification service. It states that users can register their physical address(es), email address(es), and phone number(s) to receive important safety information during an emergency, and that sign-up is free. A CodeRED logo is also present. At the bottom, three buttons are visible: 'Subscribe to ALERT King County' (highlighted with a red border), 'Modify subscription (for existing accounts)', and 'Unsubscribe from ALERT King County'.

King County

Search Kingcounty.gov

Home How do I... Services About King County Departments

Emergency Management

- COVID-19 Emergency Resource Requests
- Preparedness
- Hazards +
- ALERT King County**
- Emergency management professionals
- About us

Home > Emergency Management > ALERT King County

ALERT King County

Regional public information and notification service

ALERT King County is a regional public information and notification service offered by King County Emergency Management. **ALERT King County** helps you **stay informed** about potential hazards and threats that impact your area.

Register your physical address(es), email address(es), and phone number(s) to receive important safety information during an emergency. Sign-up is **free**.

ALERT KING COUNTY

CodeRED, the technology engine powering ALERT King County, works best in a desktop browser.
Contact ecc.kc@kingcounty.gov if you experience technical difficulties.

Subscribe to ALERT King County

Modify subscription (for existing accounts)

Unsubscribe from ALERT King County

Phones

Phone number:

TDD/TTY device - Tone delivery, for hearing impaired

Send text messages - 1 message per alerting event. Message and data rates may apply.

[SMS Terms & Conditions and Privacy Policy.](#)

Reply STOP to 31678 or 76127 or 76993 to stop receiving messages from that number

Mobile Provider :

Alert Types

Emergency Notifications

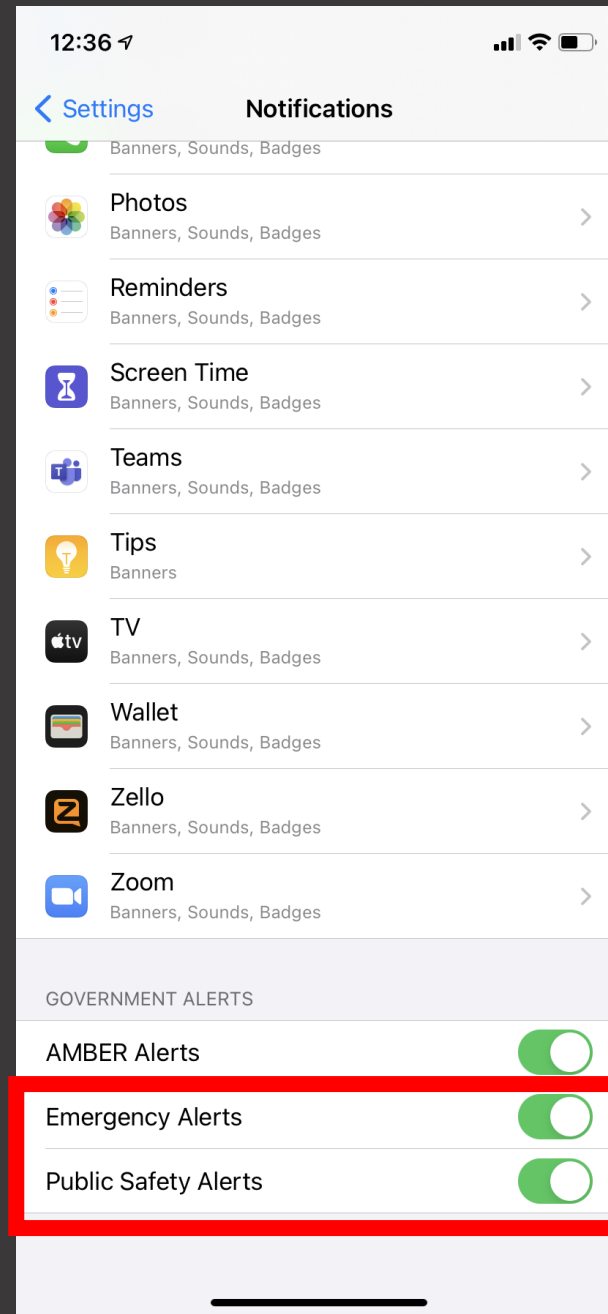
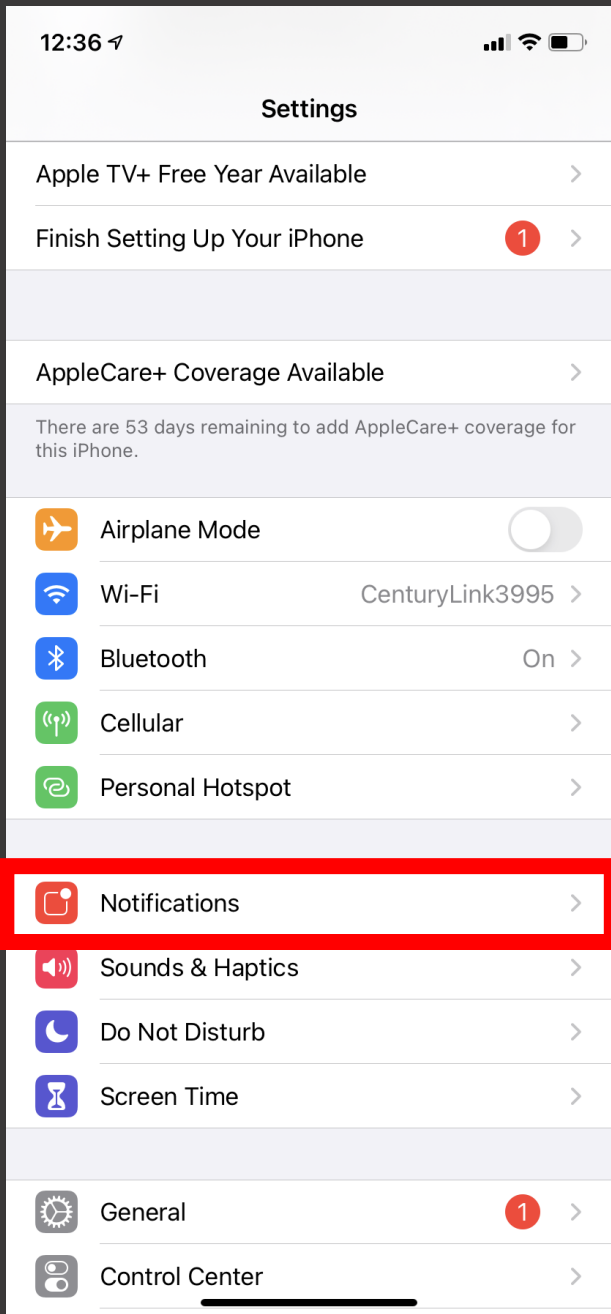
General Notifications

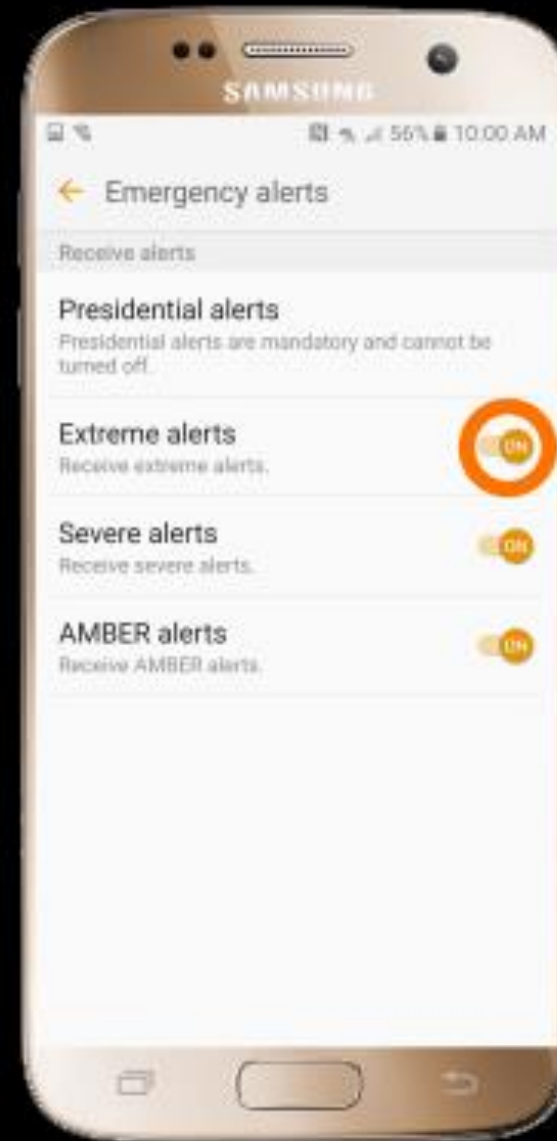
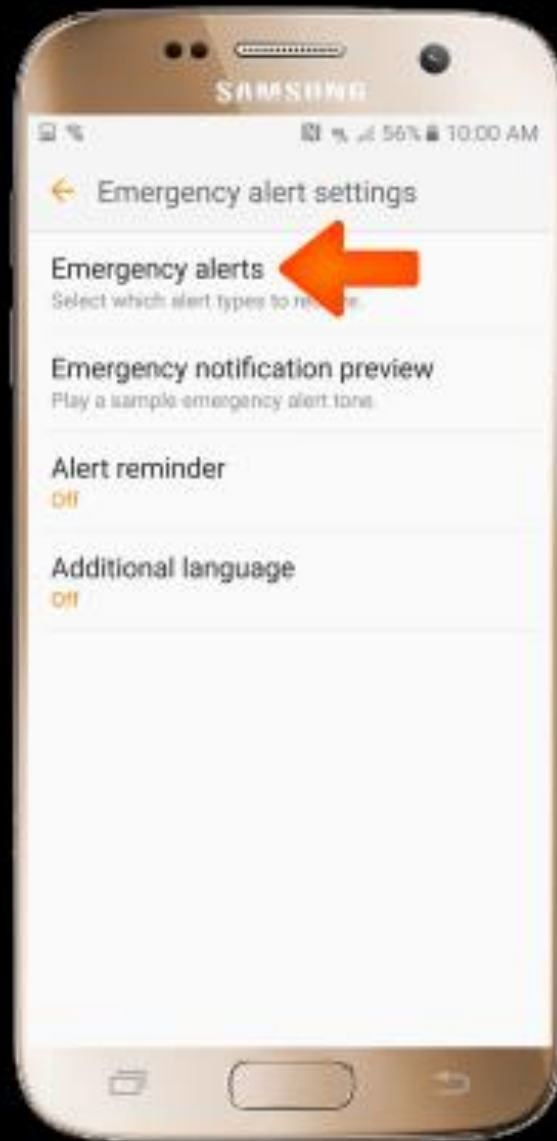
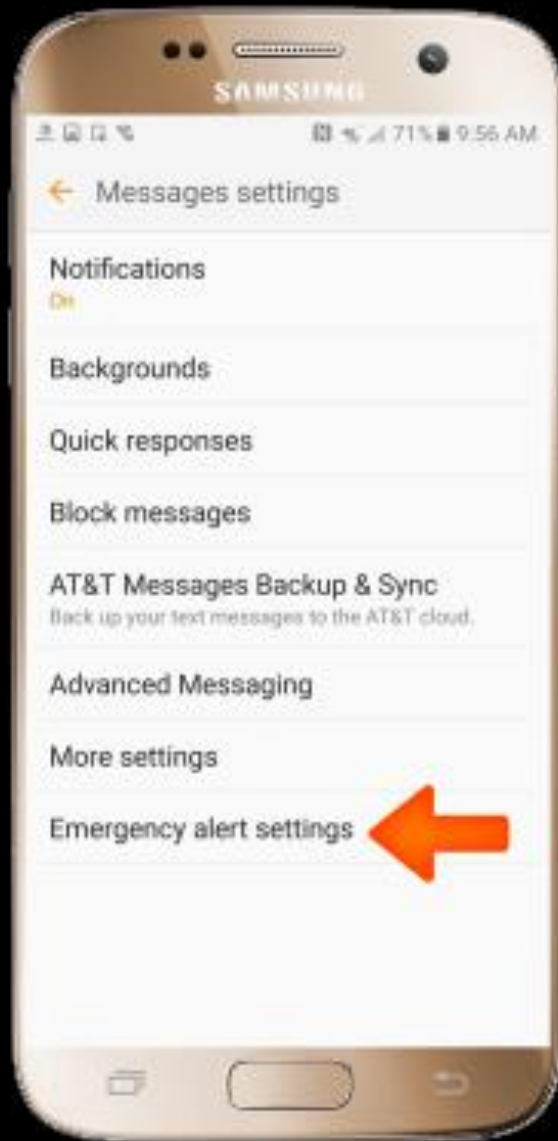
- Remove phone

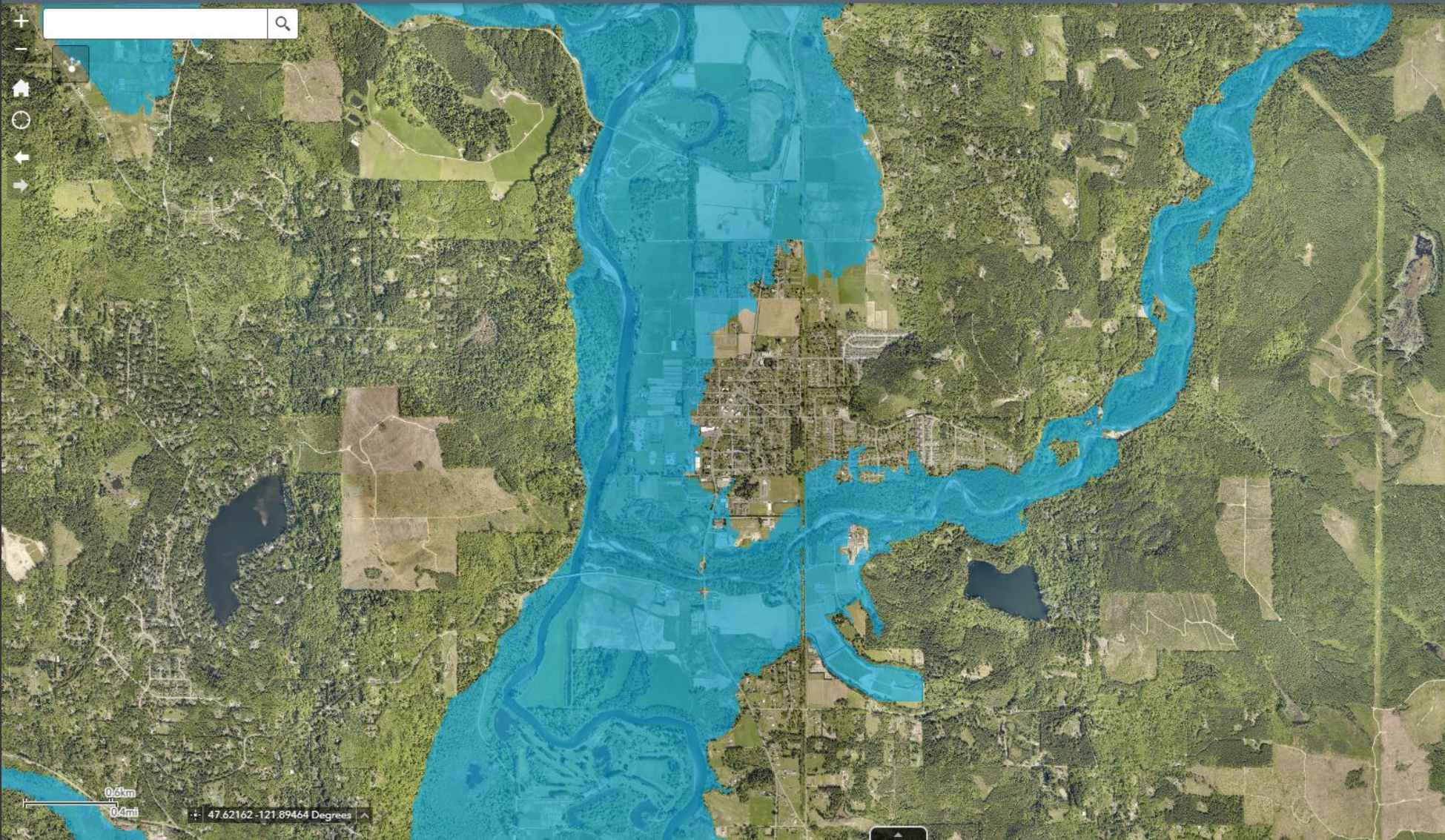
+ Add phone

Emails

+Add email







Layer List

Operational layers

- King County Address Points
- Property Layers
- Administrative Areas
- Electoral Districts
- Elevation Contours
- Environmentally Sensitive Areas
- Flooding info**
- River gages
- Flood photos
- River facilities
- Flood phases
- Elevation certificates
- Letter of Map Amendment and Revisions
- FEMA cross-sections
- FEMA FIRM panels
- FEMA floodway
- FEMA 100 year floodplain**
- FEMA 500 year floodplain
- FEMA area with reduced risk due to levee
- Groundwater

Kingcounty.gov/imap

Questions?

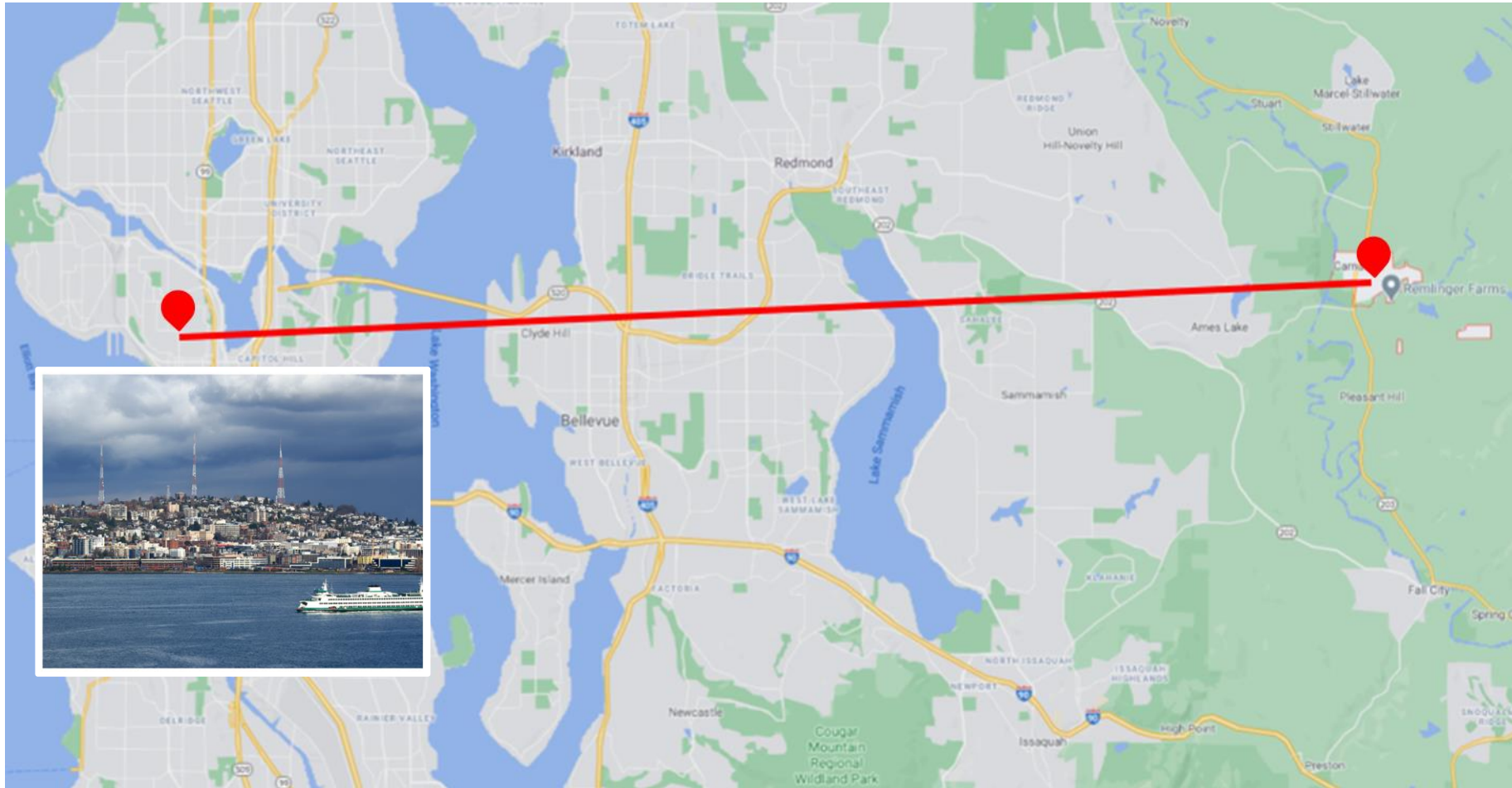
An aerial photograph showing a paved path that has been partially flooded with murky brown water. The path is flanked by lush greenery and trees. In the foreground, a white and orange striped barrier is partially submerged in the water. Further down the path, several orange traffic cones are arranged in a line, with yellow caution tape strung between them. A person wearing a red jacket and holding a black umbrella is walking away from the camera on the path in the distance. The overall scene suggests a construction site or a maintenance area that has been affected by flooding.

kingcounty.gov/alert

jaschneider@kingcounty.gov

206-205-4027

How does the system work?



Why upgrade the system?

- Built in 1985
- Now in its fifth generation – aging and difficult to maintain
- Outdated technology



What are the project goals?

To hear from you, the community:

- We want to hear your concerns, needs, and ideas
- Listen and respond to community needs and suggestions

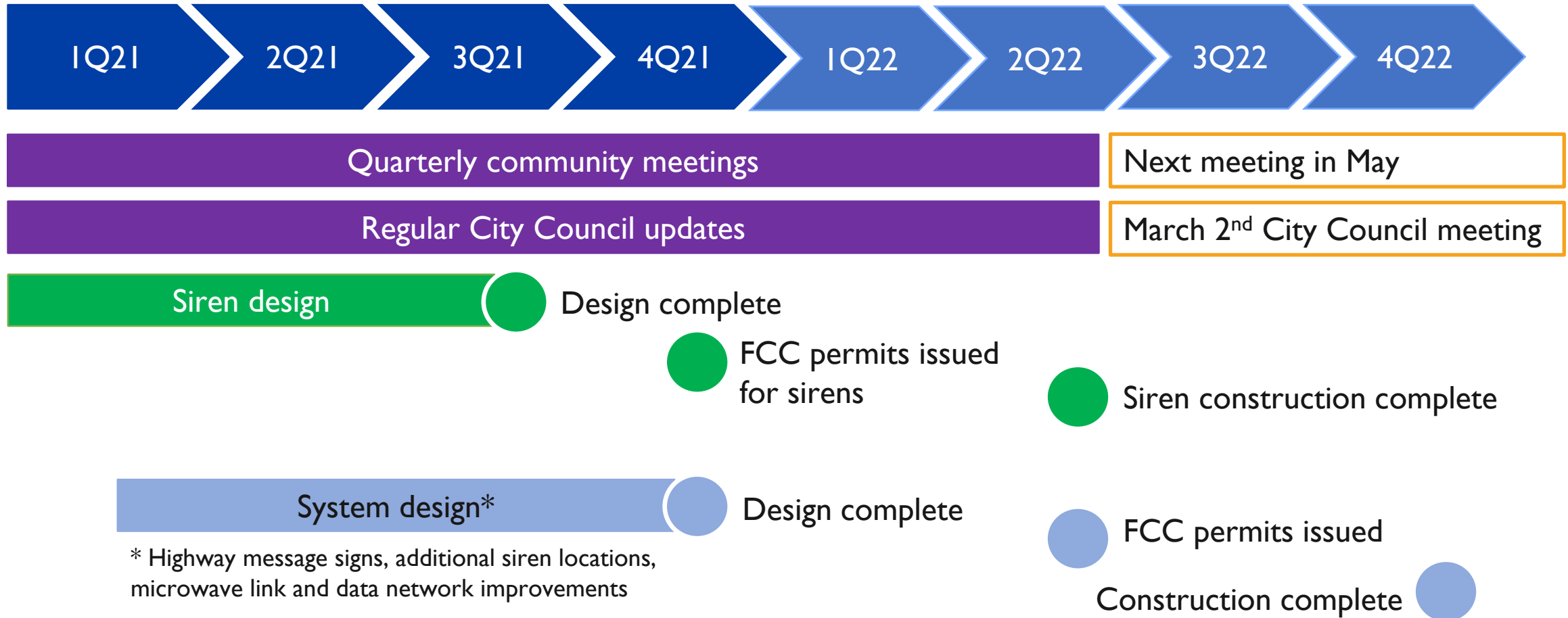
Integrate feedback with technical goals:

- Replace and improve outdated system
- Add redundancy, resiliency, and reliability
- Add signage for consistent evacuation procedures

So that it works for everyone 100% of the time



Project schedule



Community discussion

- **Break into smaller groups**
 - Your time to share ideas, needs, concerns, questions
 - We will document and share/follow-up after the meeting
 - Facilitators to guide and document discussion
- **Come back together to share**
 - Small group facilitators report back what we heard



Guiding questions

- What are your concerns with the existing system?
 - What's working?
 - What is not working?
- What is important to you in a new system?
- Where would you like to see additional sirens? Signage?
- And more that your facilitator will share!



What did we hear?



Thank you!

Next steps:

- Next community meeting in May
- City Council meeting March 2nd

Stay informed:

- Updates and email sign-up on project website: <https://www.seattle.gov/utilities/neighborhood-projects/tolt-dam-emergency-warning-system>
- Sign-up for flood alert tools at ALERT King County: kingcounty.gov/alert

