



INTERSECTION IMPROVEMENTS BEING COORDINATED WITH SEATTLE DEPARTMENT OF TRANSPORTATION (SDOT)

CURB ALIGNMENT BEING COORDINATED WITH SEATTLE DEPARTMENT OF TRANSPORTATION (SDOT)

PROJECT CONTINUES 32ND AVE NE

32ND AVE NE NO PARKING (WEST SIDE)

MATCH EXISTING

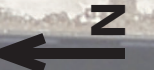
MATCH EXISTING

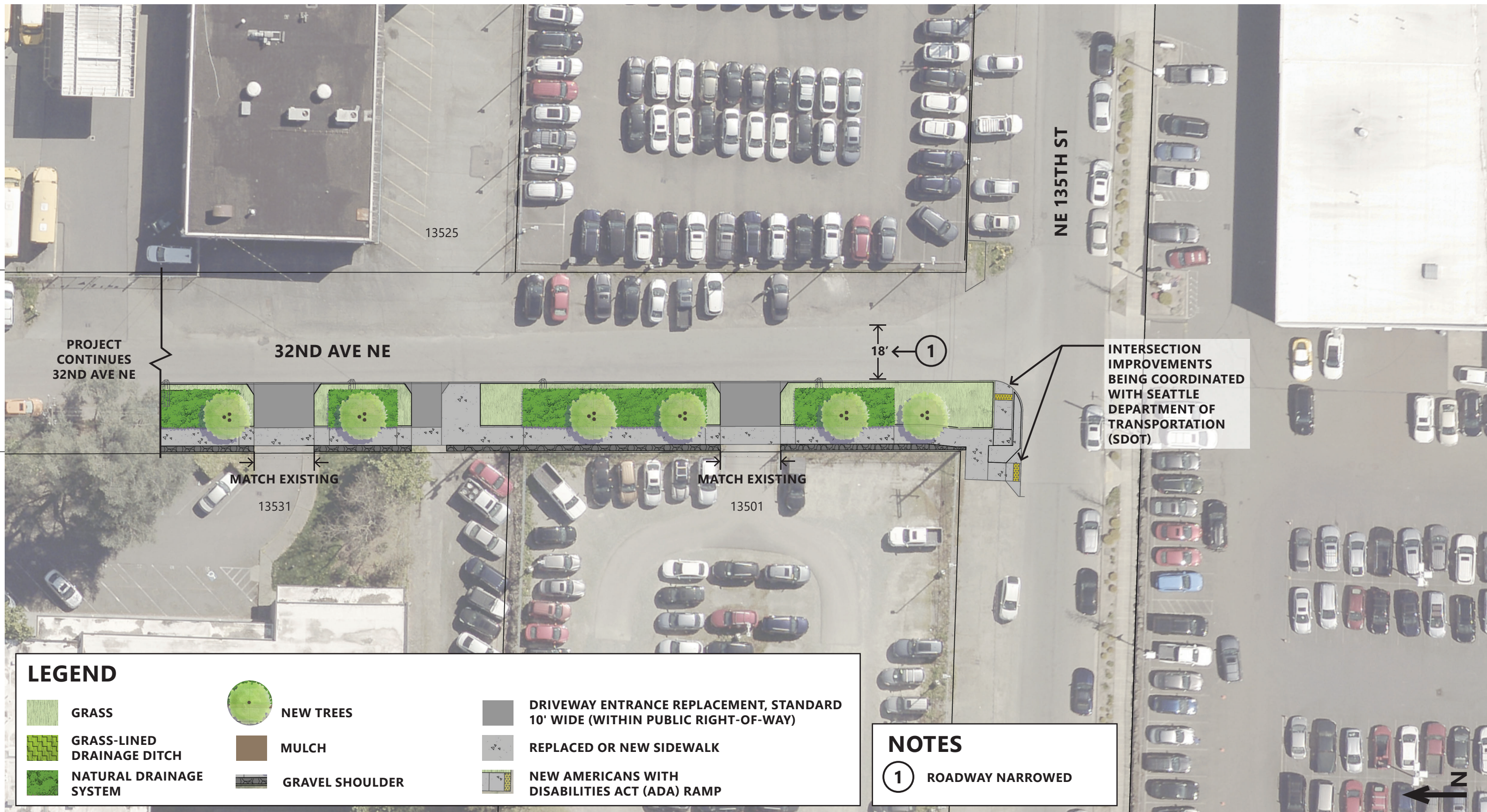
LEGEND

- | | | | | | |
|--|----------------------------|--|-----------------|--|---|
| | GRASS | | NEW TREES | | DRIVEWAY ENTRANCE REPLACEMENT, STANDARD 10' WIDE (WITHIN PUBLIC RIGHT-OF-WAY) |
| | GRASS-LINED DRAINAGE DITCH | | MULCH | | REPLACED OR NEW SIDEWALK |
| | NATURAL DRAINAGE SYSTEM | | GRAVEL SHOULDER | | NEW AMERICANS WITH DISABILITIES ACT (ADA) RAMP |

NOTES

- 1 ROADWAY NARROWED





PROJECT CONTINUES 32ND AVE NE

32ND AVE NE

NE 135TH ST

13525

MATCH EXISTING

13531





MATCH EXISTING

13501

18' ← ①

INTERSECTION IMPROVEMENTS BEING COORDINATED WITH SEATTLE DEPARTMENT OF TRANSPORTATION (SDOT)

LEGEND

-  GRASS
-  GRASS-LINED DRAINAGE DITCH
-  NATURAL DRAINAGE SYSTEM
-  NEW TREES
-  MULCH
-  GRAVEL SHOULDER
-  DRIVEWAY ENTRANCE REPLACEMENT, STANDARD 10' WIDE (WITHIN PUBLIC RIGHT-OF-WAY)
-  REPLACED OR NEW SIDEWALK
-  NEW AMERICANS WITH DISABILITIES ACT (ADA) RAMP

NOTES

- ① ROADWAY NARROWED

