

Welcome to the Bitter Lake Reservoir Improvement Project Open House

Clean, safe, and protected
drinking water with more
community open space



English



Español



简体中文



ཨུལ་ཅེ་ཏེ་

[Bitterlakereservoir.participate.online](https://bitterlakereservoir.participate.online)



Seattle
Public
Utilities



Project Overview

- Seattle Public Utilities (SPU) is designing a new drinking water reservoir in the Bitter Lake neighborhood. The new 21-million-gallon reservoir will replace the existing reservoir that is reaching the end of its service life.
- The new reservoir will be partially buried and hold the same amount of water as the old reservoir.
- More open space will be available for the community to enjoy after the project is complete.
- SPU is working with Seattle Parks and Recreation (SPR) to design the new open space which will include the existing park.

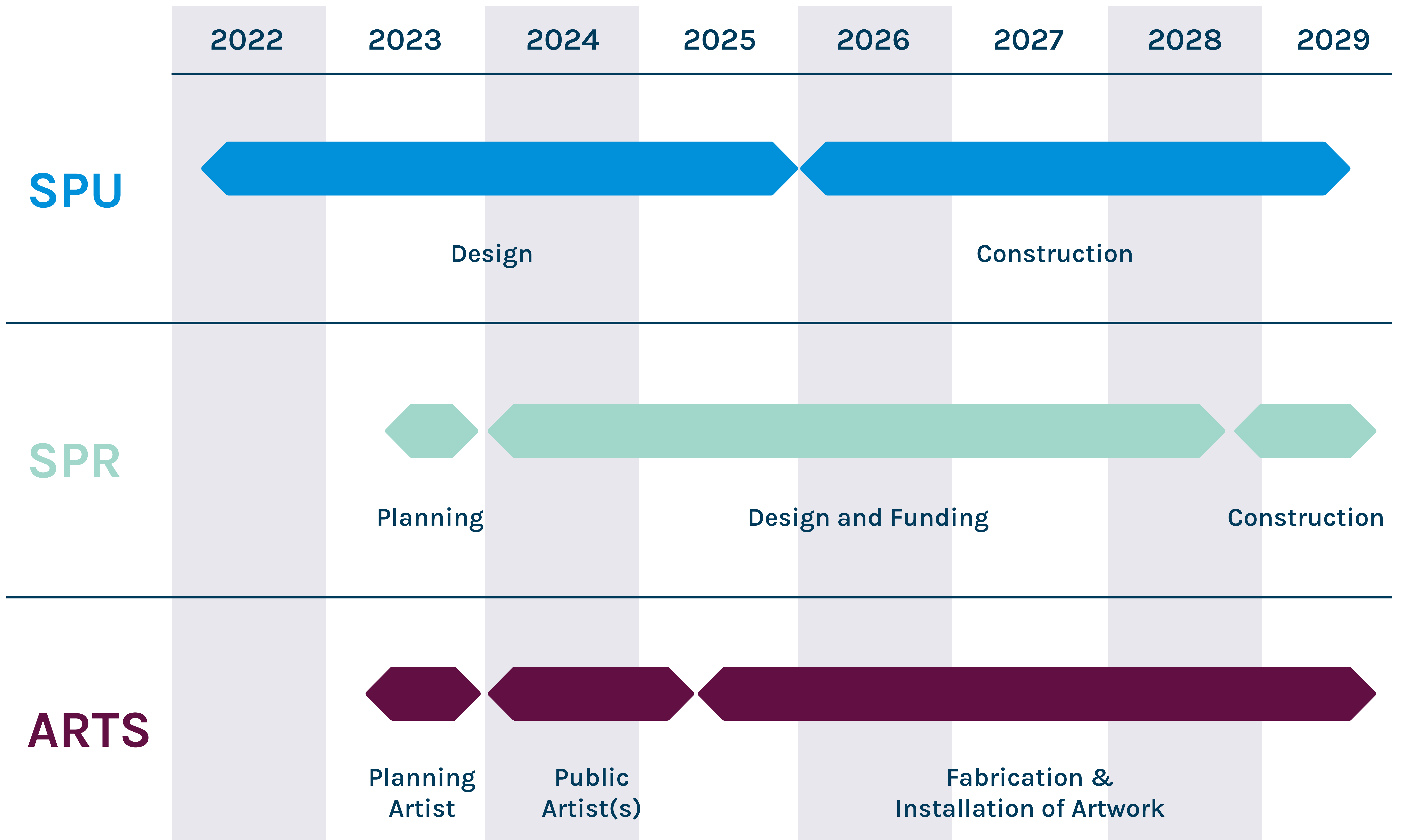


Existing Reservoir Site

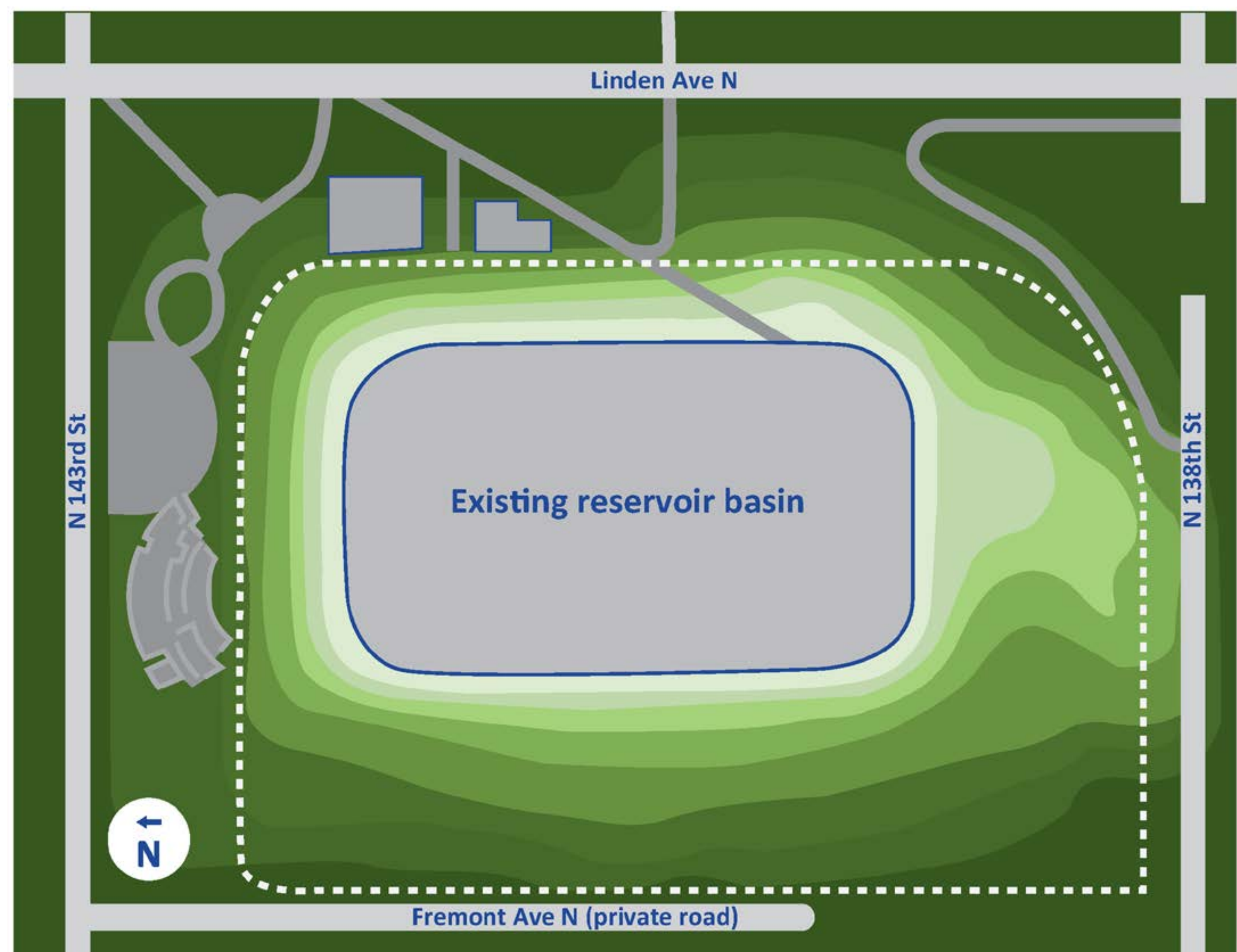


Existing reservoir and park.

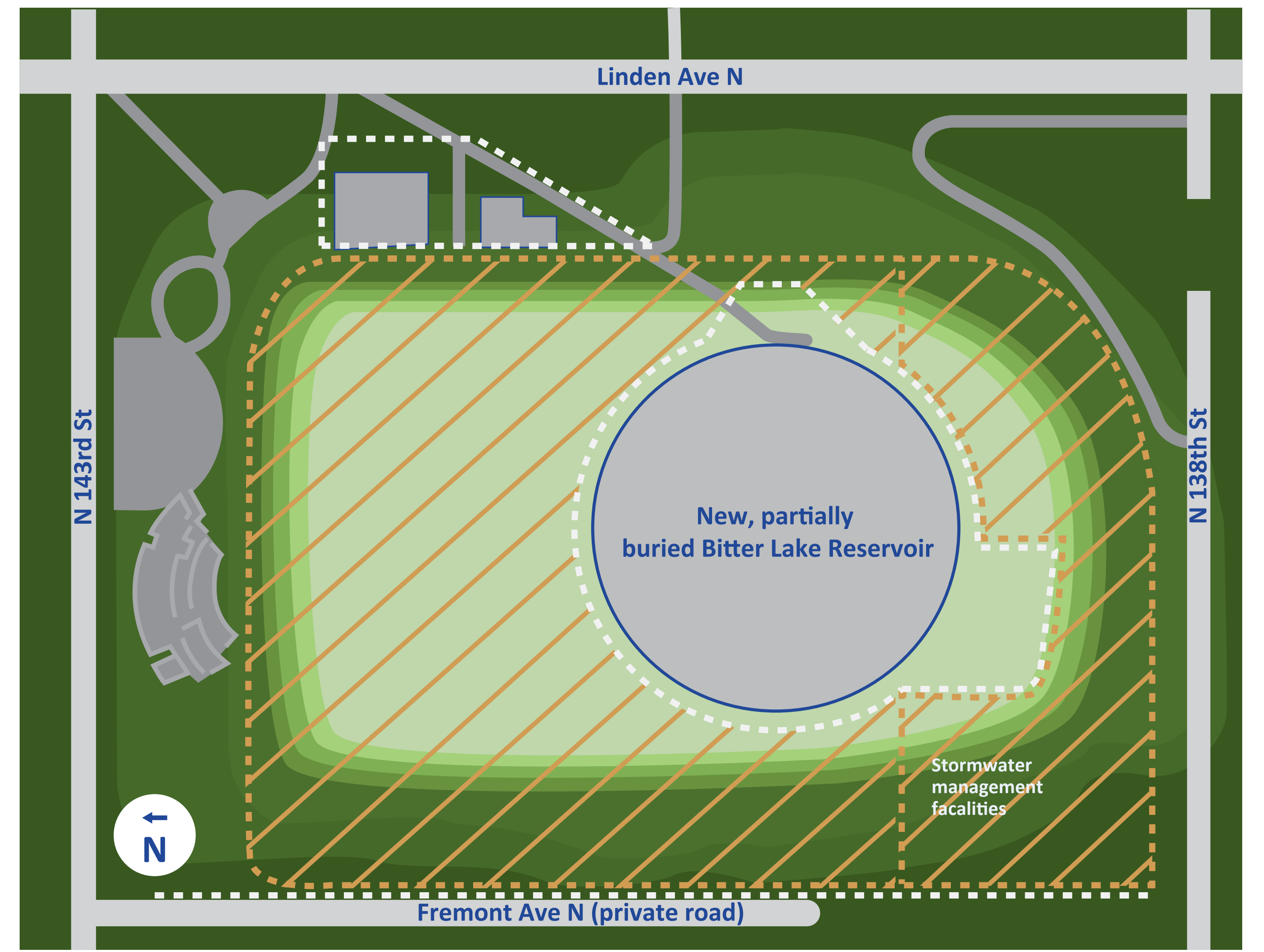
Project Timelines



Comparing Reservoir Footprints



Higher elevation Lower elevation - - - - = Fence line Map not to scale



Higher elevation Lower elevation - - - - = Fence line Additional Open Space Map not to scale

Existing reservoir site	
Reservoir type	Above ground
Tank size	21 million gallons
Open space	3 acres
Park	✓
Public art	✓

New reservoir site	
Reservoir type	Partially buried
Tank size	21 million gallons
Open space	10 acres
Park	✓ +
Public art	✓ +

Preliminary Rendering



North view of preliminary new reservoir design.

Preliminary Rendering



Northeast view of preliminary new reservoir design.

Preliminary Rendering



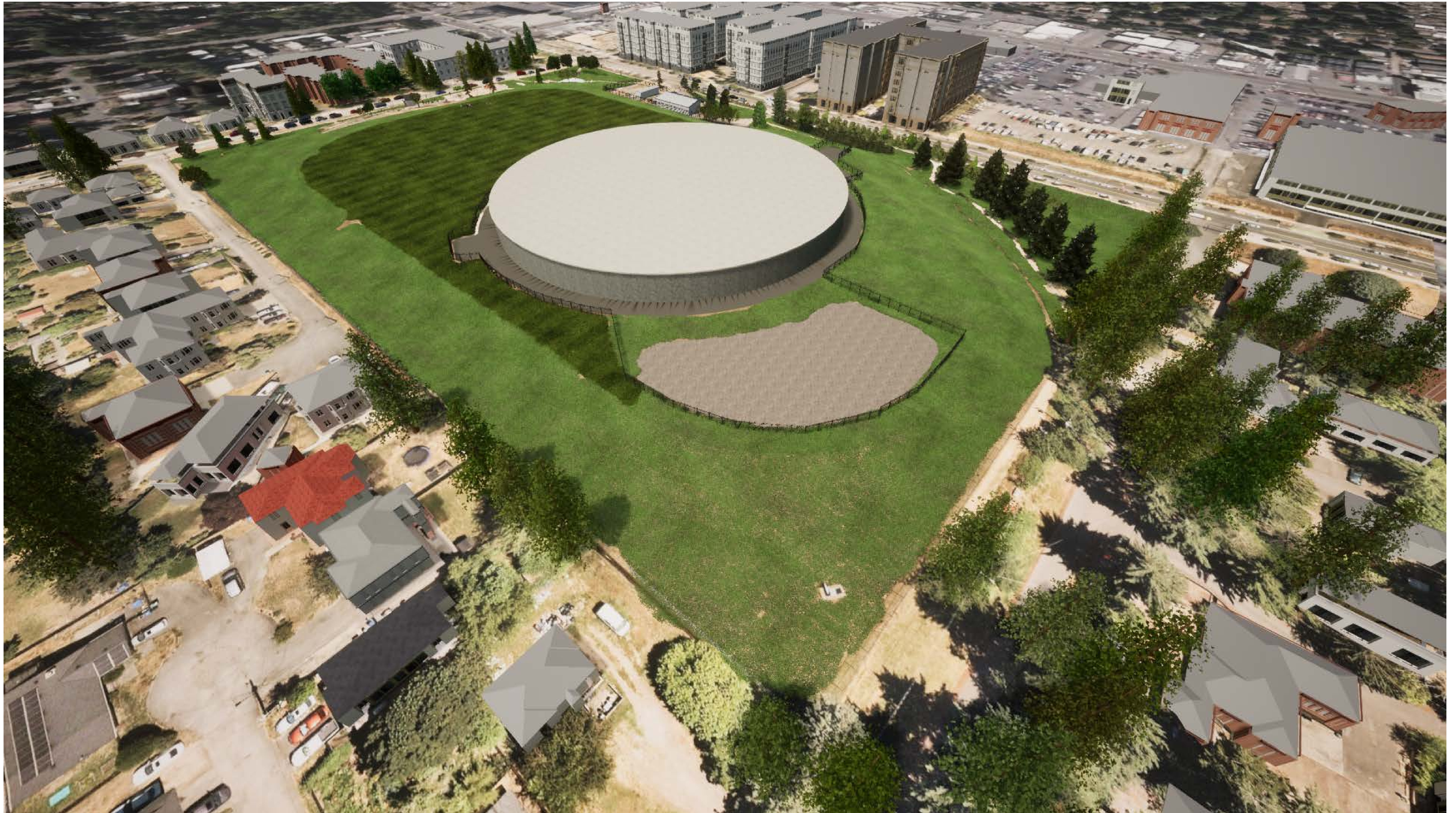
East view of preliminary new reservoir design.

Preliminary Rendering



East view of preliminary new reservoir design.

Preliminary Rendering



Southwest view of preliminary new reservoir design.



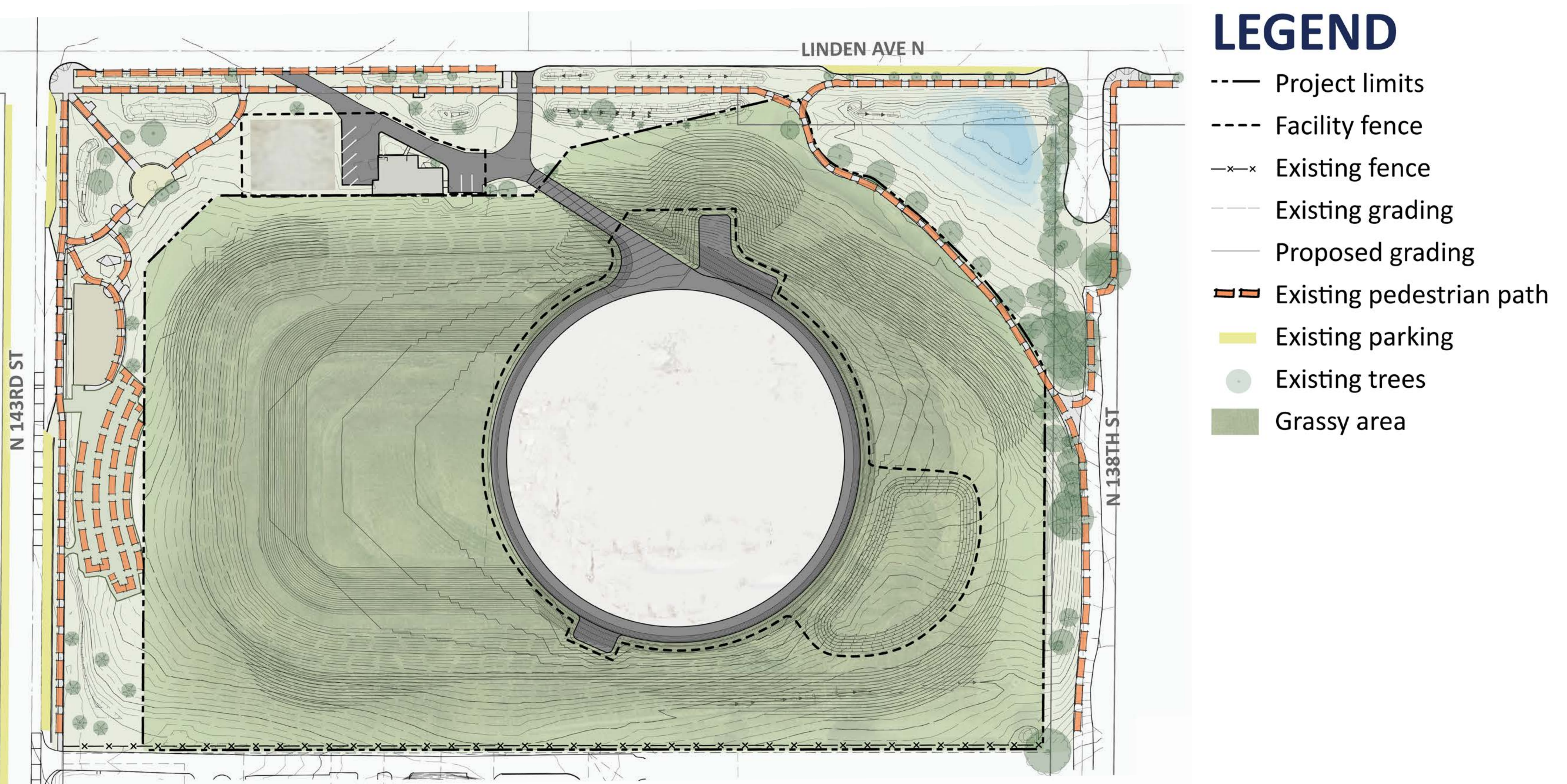
Jennifer Dixon, Playland (2013)

Location: Between N 130th St and N 135th St on Linden Ave N

Photography by Jim Tillman

- In accordance with Seattle's Public Art Ordinance, 1% of eligible city capital improvement project funds are set aside for the commission, purchase, and installation of artworks in a variety of settings.
- By providing opportunities for individuals to encounter art in parks, libraries, community centers, on roadways, bridges, and other public venues, the City of Seattle simultaneously enriches citizens' daily lives and gives voice to artists.
- The Seattle Office of Arts & Culture (ARTS) has commissioned a planning artist who will coordinate public engagement and ideas for public art.
- ARTS will also select an artist to design the public art for the Bitter Lake Reservoir Improvement Project later in the project.

New Reservoir Site Design



Preliminary site plan of new reservoir design.

We Want Your Feedback!

Scan the QR code below
to take the survey!



English



Español



简体中文



ကဏ္ဍဇာ

[Bitterlakereservoir.participate.online](https://bitterlakereservoir.participate.online)



Fill out a paper version
of our online survey



Next Steps and How to Stay Engaged



In the upcoming design phase, the project team will:

- Review and consider public feedback
- Refine design plans
- Continue conversations with the community

**Did your neighbor miss the open house?
Have them come talk to us on:**

Saturday, June 3 from 3 to 5 pm
at the Bitter Lake Community Center

Saturday, June 10 from 12 to 2 pm
at the Bitter Lake Reservoir Park

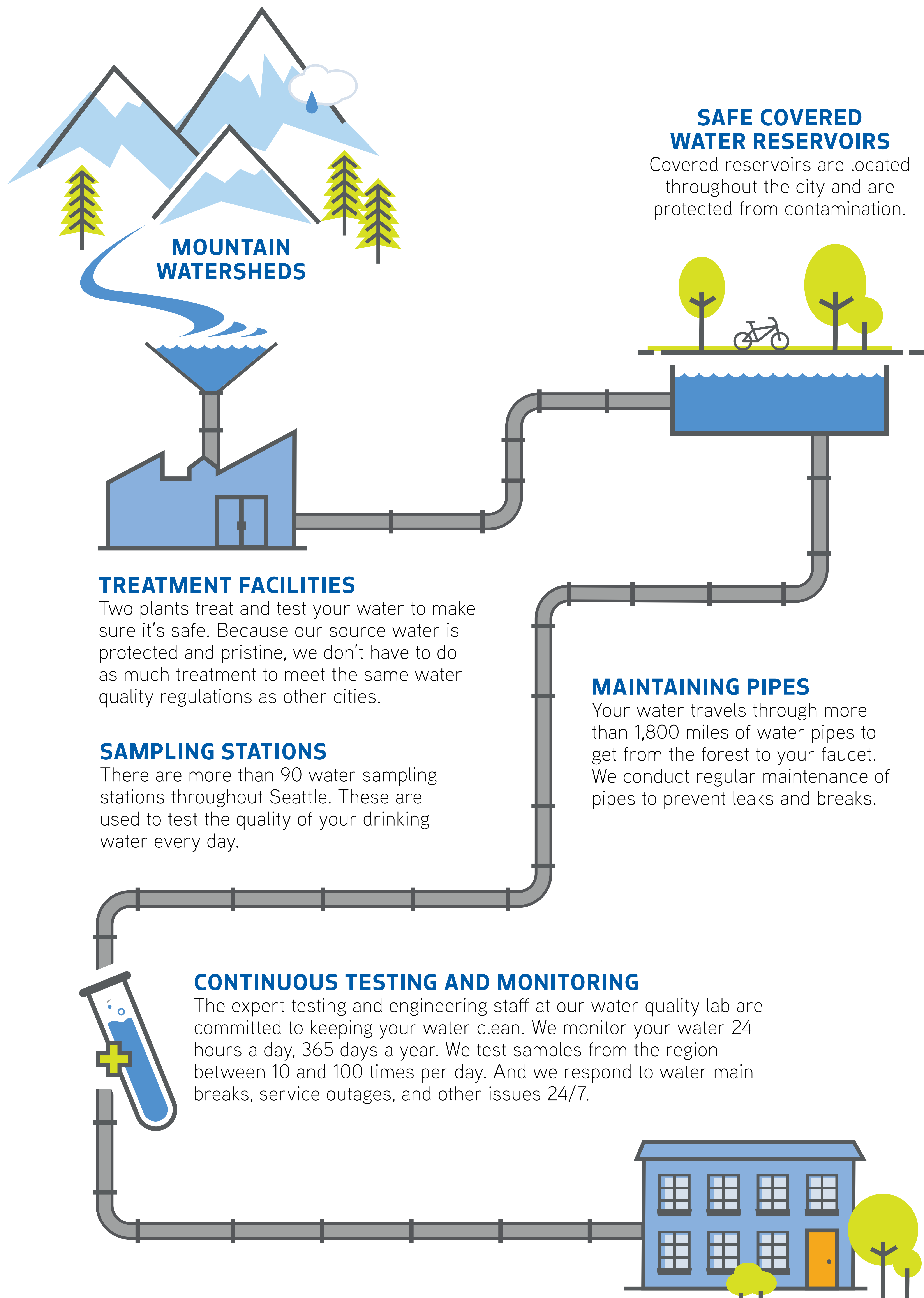
**Please subscribe to our project
listserv to stay connected!**



Scan the QR code to sign
up for email updates

May 2023





**1,500,000 CUSTOMERS AND
750,000 HOMES SERVED**

PUBLIC ART

at Bitter Lake Reservoir

Seattle Office of Arts & Culture (ARTS), in partnership with the Seattle Public Utilities (SPU) is working with Kate Clark, lead artist of Parkeology to identify and develop Public Art opportunities for the Bitter Lake Reservoir Improvement Project, in collaboration with YOU!



What kind of art should live at the new Bitter Lake reservoir? We need your input!

How do you want to connect to share input about public art projects at the Bitter Lake Reservoir?

Onsite Gatherings & Workshops at the Bitter Lake Reservoir

Drop in visit times at the Bitter Lake Reservoir and/or Library

Online Meetings

What times do you want to meet?

9-11 AM 11-12 AM 12-2 PM 2-4 PM 4-6 PM 6-8 PM Weekends Weekdays