

GARBAGE REPORT

December 2009

Seattle Public Utilities, Utility Systems Management, Cross Line of Business Economic Services Section

Report Date: April 20, 2010

Phone: (206) 684-4143

Total City Tonnage Breakdown

Self Haul Cars ¹ in December:	410Tons	53.1%	increase vs. same period in 2008
2009 Cumulative Self Haul Cars:	6,354 Tons	10.5%	increase vs. same period in 2008
Self Haul Trucks ² in December:	5,545 Tons	25.3%	increase vs. same period in 2008
2009 Cumulative Self Haul Trucks:	75,210 Tons	11.7%	decrease vs. same period in 2008
2009 Cumulative Self Haul Cars & Trucks:	81,565 Tons	10.3%	decrease vs. same period in 2008
Residential Collection in December:	9,640 Tons	4.7%	increase vs. same period in 2008
2009 Cumulative Residential Collection:	118,725 Tons	6.7%	decrease vs. same period in 2008
Commercial Tons in December:	12,111 Tons	2.0%	decrease vs. same period in 2008
2009 Cumulative Commercial Tons:	151,398 Tons	14.4%	decrease vs. same period in 2008
Total Tons Disposed in December:	27,706 Tons	5.5%	increase vs. same period in 2008
2009 Cumulative Total Tons Disposed:	351,688 Tons	11.0%	decrease vs. same period in 2008

Recycling & Disposal Station Self Haul Garbage Rates³:

Cars: \$25.00 per trip

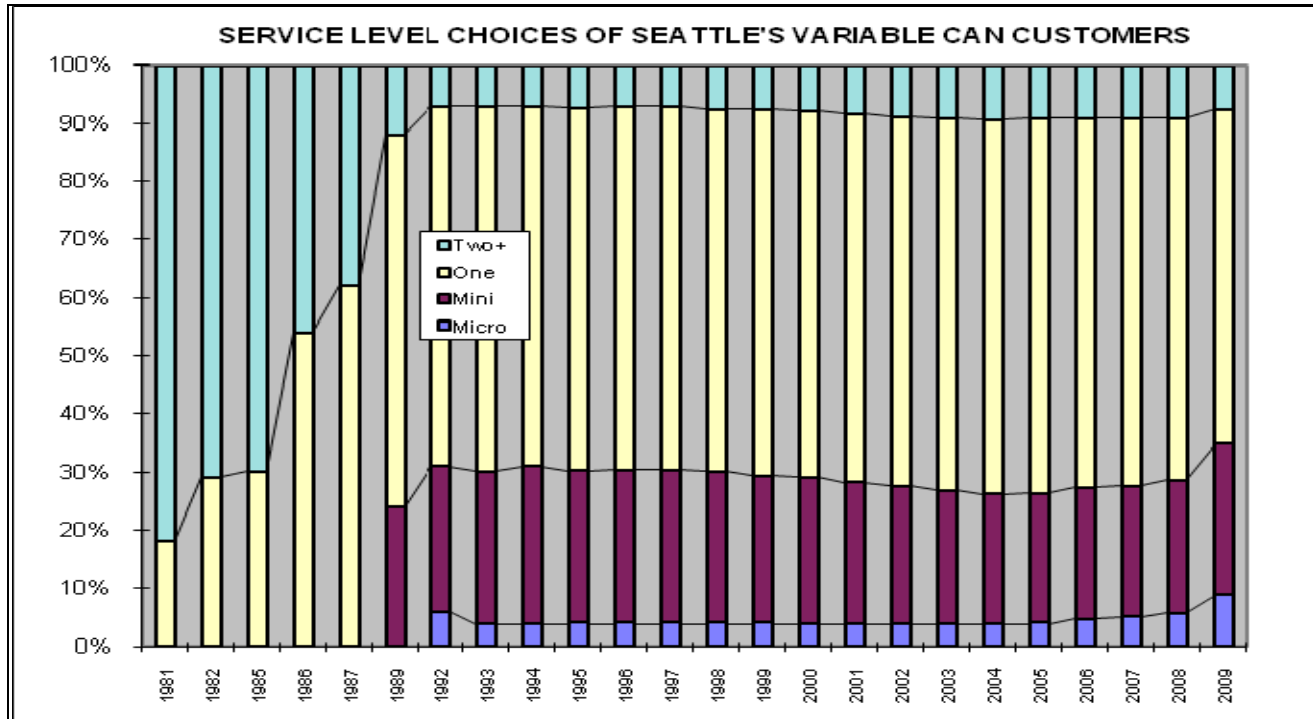
Trucks: \$130.00 per ton (\$25.00 minimum)

¹ Car tons calculated based on 480.8 pounds per car for 2009 to present according to study done from Jan-Dec 2008

² An estimated 53% of the self-haul truck tons are commercial according to a waste stream sampling study conducted in 2000.

³ Vans & pickup trucks pay the per ton truck rate.

Variable Can Customer Service Levels³



	Micro	Mini	One	Two+
1981			18.00%	82.00%
1982			29.00%	71.00%
1985			30.00%	70.00%
1986			54.00%	46.00%
1987			62.00%	38.00%
1989		24.00%	64.00%	12.00%
1992	6.00%	25.00%	62.00%	7.00%
1993	4.00%	26.00%	63.00%	7.00%
1994	4.00%	27.00%	62.00%	7.00%
1995	4.06%	26.15%	62.44%	7.35%
1996	4.04%	26.23%	62.59%	7.14%
1997	4.04%	26.23%	62.59%	7.14%
1998	4.16%	25.88%	62.35%	7.61%
1999	4.06%	25.60%	63.62%	7.72%
2000	3.93%	25.08%	63.02%	7.97%
2001	3.96%	24.24%	63.32%	8.49%
2002	3.85%	23.62%	63.72%	8.82%
2003	3.84%	22.85%	64.23%	9.08%
2004	3.86%	22.31%	64.54%	9.30%
2005	4.13%	22.22%	64.37%	9.28%
2006	4.72%	22.49%	63.57%	9.21%
2007	5.05%	22.50%	63.17%	9.28%
2008	5.66%	22.85%	62.45%	9.04%
2009	8.93%	25.89%	57.51%	7.67%

Monthly Variable Can Rates:

Micro (12 gal)	\$14.05
Mini (19 gal)	\$17.15
One Can (32 gal)	\$22.30
Two Cans (64 gal)	\$44.60
Each Add'l Can	\$22.30

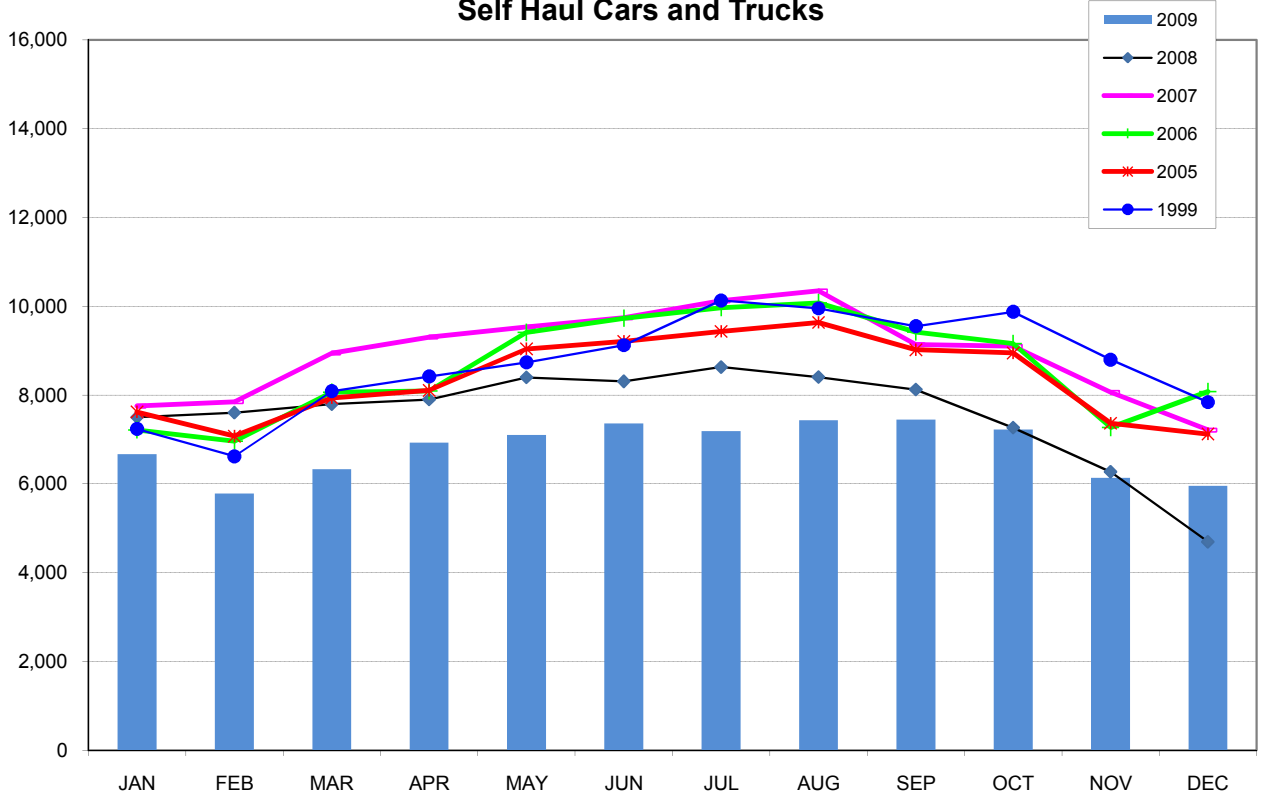
Residential Dumpster Service⁴

Most Common Monthly Rate
\$140.73 (+ \$26.55 per account)

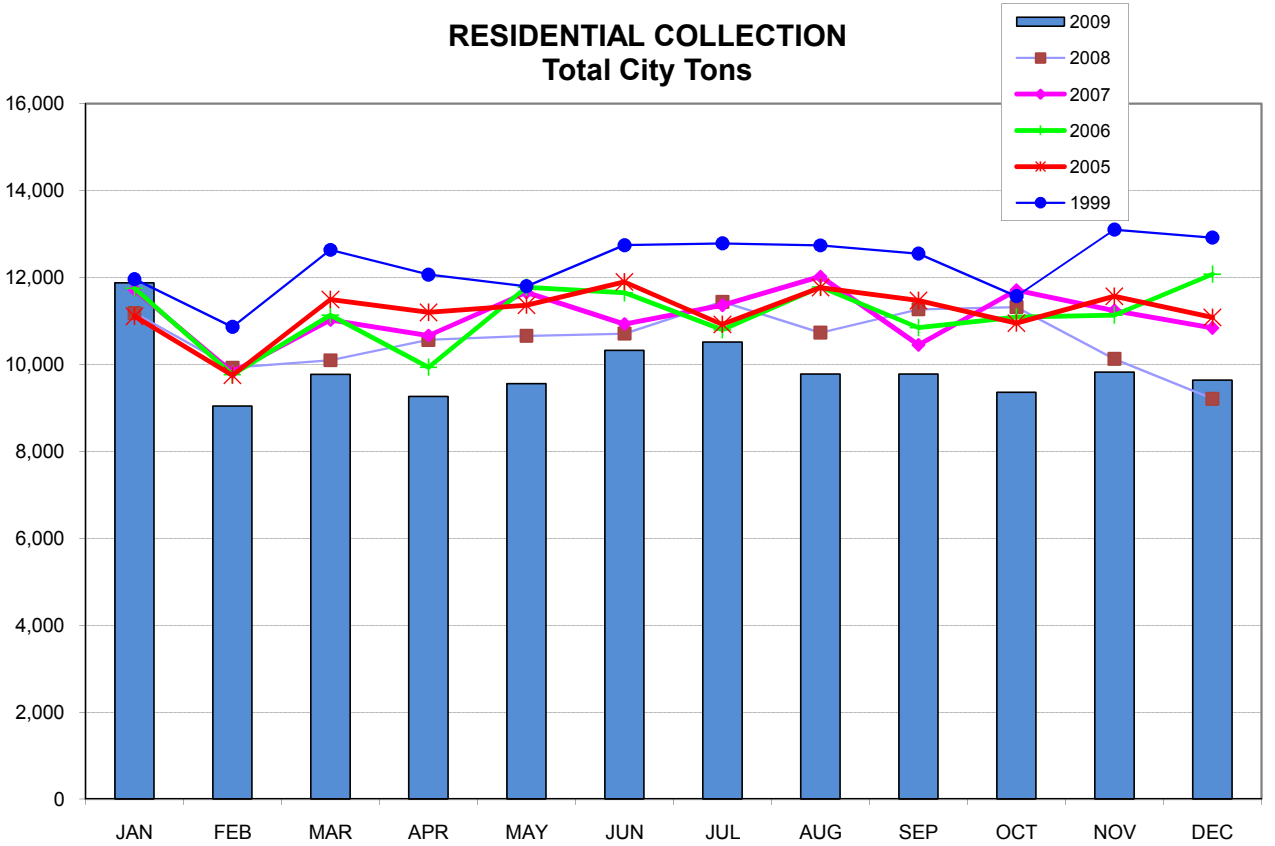
³ Based on single-family customers only

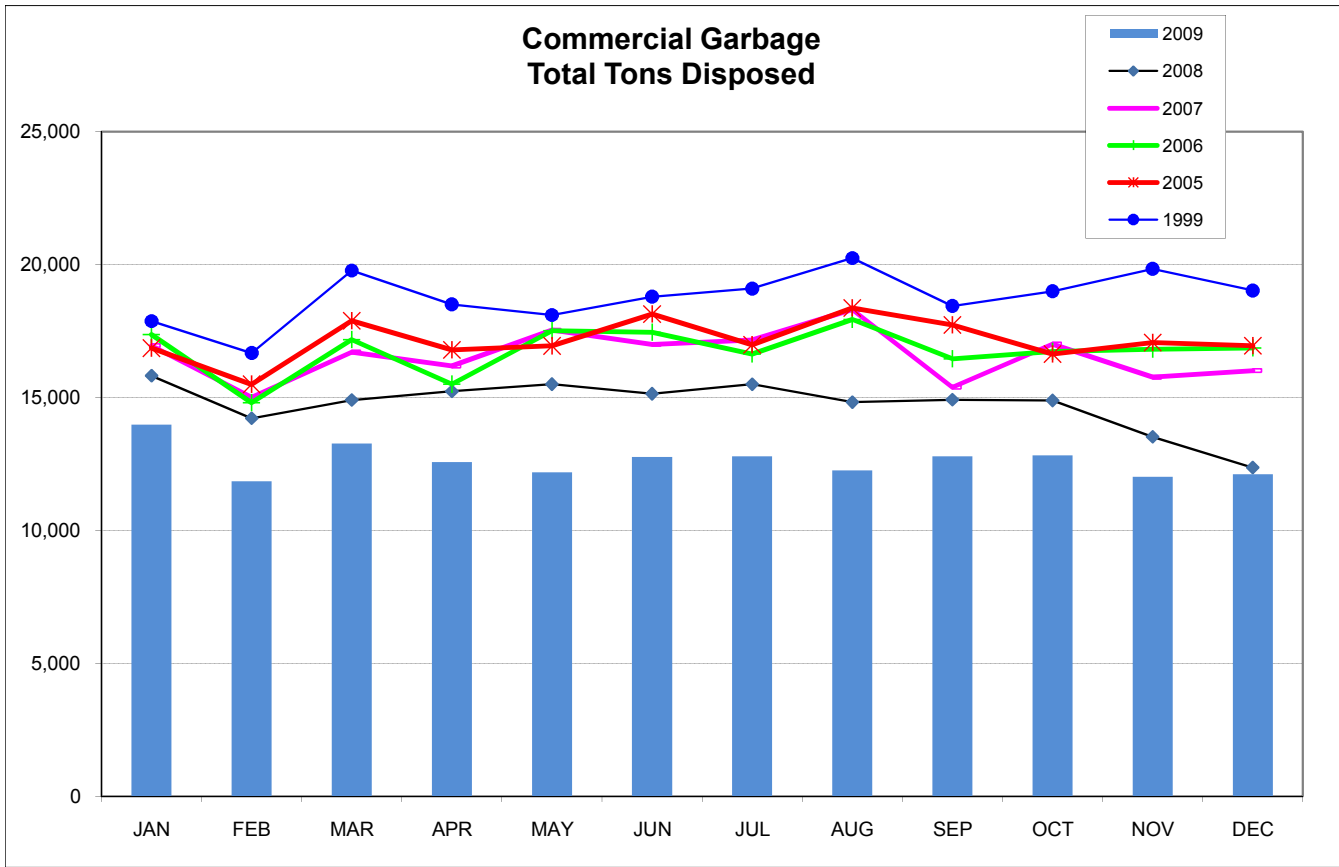
⁴ This is the rate for a one cubic yard uncompacted container picked up once per week, which is the most common dumpster service level. Residential dumpster service rates vary based on the number and size of containers and the number of pickups per week.

SELF HAUL TO CITY OWNED STATIONS Self Haul Cars and Trucks

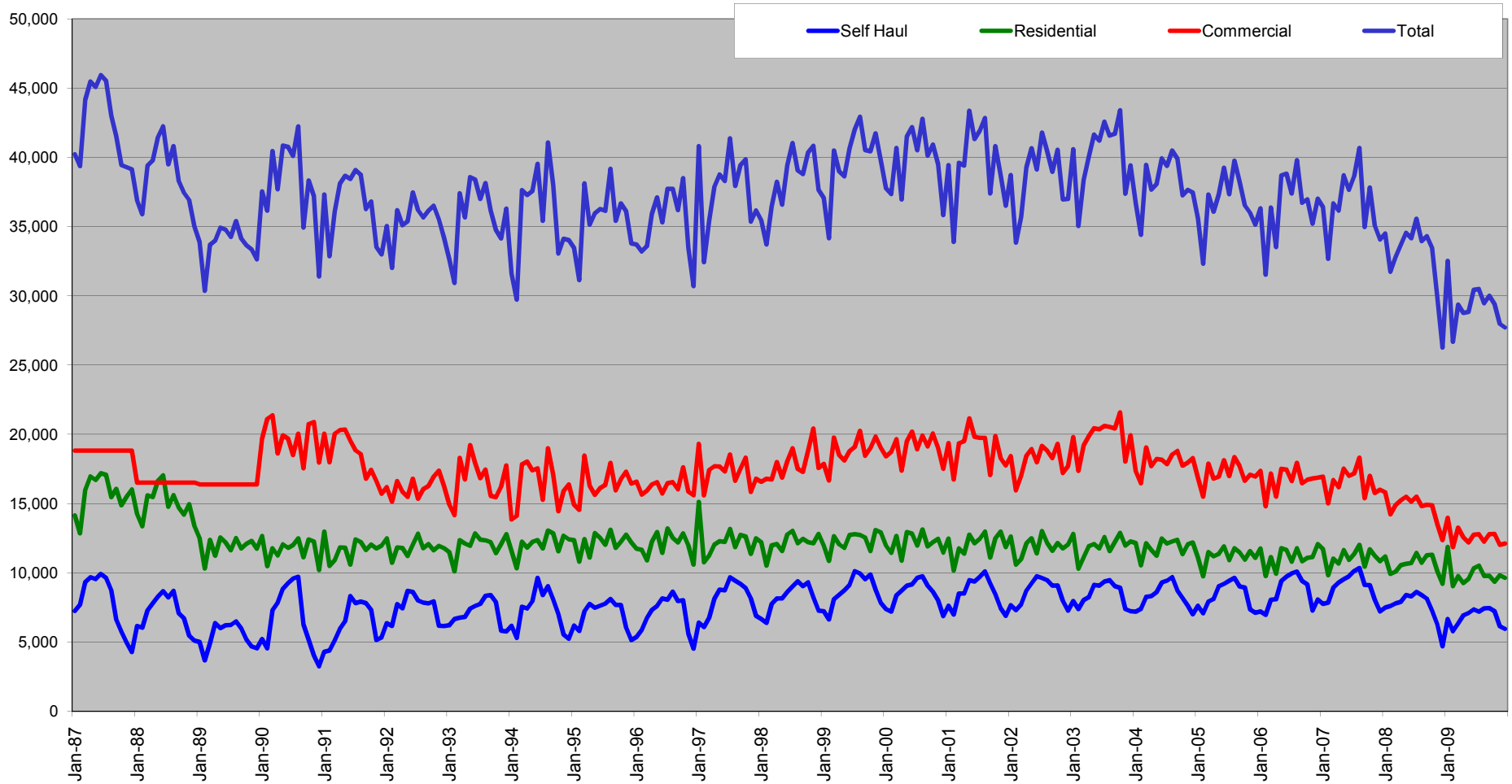


RESIDENTIAL COLLECTION Total City Tons





City of Seattle Garbage Disposal



Monthly commercial tonnage for 1987-1989 estimated from annual data.