

GARBAGE REPORT

December 2003

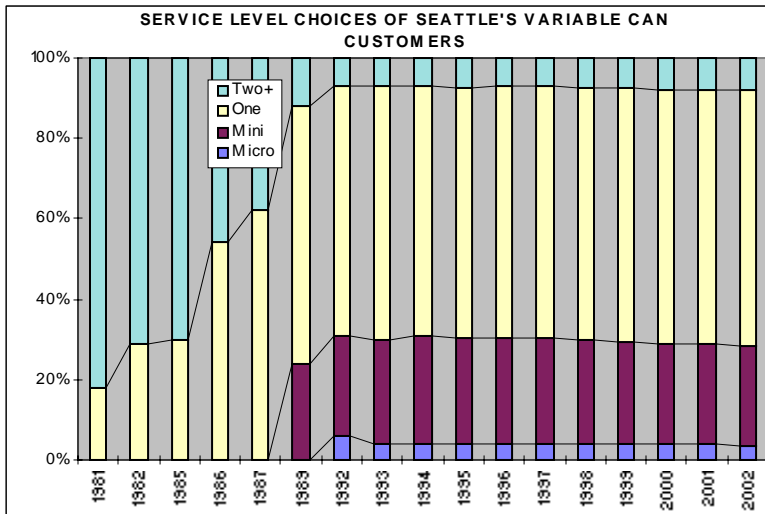
Seattle Public Utilities, Resource Planning Division, Forecasting & Evaluation Section

Report Date: January 26, 2004

Phone: (206) 684-4143

Total City Tonnage Breakdown

Self Haul Cars ¹ in December:	514 Tons	1.9% decrease vs. same period in '02
2003 Cumulative Self Haul Cars:	7,386 Tons	0.4% increase vs. same period in '02
Self Haul Trucks ² in December:	6,708 Tons	0.5% decrease vs. same period in '02
2003 Cumulative Self Haul Trucks:	93,845 Tons	1.8% decrease vs. same period in '02
2003 Cumulative Self Haul Cars & Trucks:	101,232 Tons	1.6% decrease vs. same period in '02
Residential Collection in December:	12,268 Tons	1.9% increase vs. same period in '02
2003 Cumulative Residential Collection:	143,532 Tons	0.4% increase vs. same period in '02
Commercial Tons in December:	18,349 Tons	3.7% increase vs. same period in '02
2003 Cumulative Commercial Tons:	213,738 Tons	1.6% decrease vs. same period in '02
Total Tons Disposed in December:	37,839 Tons	2.3% increase vs. same period in '02
2003 Cumulative Total Tons Disposed:	458,502 Tons	1.0% decrease vs. same period in '02



Monthly Variable Can Rates:

Micro (12 gal)	\$10.05
Mini (19 gal)	\$12.35
One Can (32 gal)	\$16.10
Two Cans (64 gal)	\$32.20
Each Add'l Can	\$16.10

Residential Dumpster Service³

Most Common Monthly Rate

\$82.50 (+ \$.60 per unit)

Selected Statistics for Residential Collection Service

Cumulative Residential Collection Tons through December 2003:

• Collected by Waste Management:	85,788 Tons	1.8% decrease vs. same period in '02
• Collected by Rabanco:	57,744 Tons	3.9% increase vs. same period in '02

Recycling & Disposal Station Self Haul Garbage Rates⁴:

Cars: \$14.00 per trip

Trucks: \$99.15 per ton (\$14.00 minimum)

¹ Car tons calculated based on 378.8 pounds per car for 2001 & 2002 according to study done from Jan-Dec 2000

² An estimated 53% of the self-haul truck tons are commercial according to a waste stream sampling study conducted in 2000.

³ This is the rate for a one cubic yard container picked up once per week, which is the most common dumpster service level. Residential dumpster service rates vary based on the number and size of containers, the number of pickups per week, and the number of dwelling units.

⁴ Vans & pickup trucks pay the per ton truck rate.

CITY OF SEATTLE GARBAGE TONNAGE REPORT 2002-2003

		SELF HAUL GARBAGE			RESIDENTIAL GARBAGE				COMMERCIAL GARBAGE						GRAND	
		Total			City ¹	Private Stations		Total	City	Private	Total	City	Private	Total	TOTAL	TOTAL
Year	Month	Cars ²	Trucks	Self Haul	NRDS & SRDS	WM	Rabanco	Resident Garbage	NRDS & SRDS ¹⁴	WM ^{10,15}	WM	NRDS & SRDS ¹⁴	Rabanco ¹¹	Rabanco	Commer Garbage	GARBAGE DISPOSED
						Diverted Tons ⁹				Eastmont			3rd & Lander			
2002	1	513	7,156	7,669	12,627	0	0	12,627	775	5,412	6,187	2,234	10,001	12,235	18,422	38,718
2002	2	476	6,831	7,307	9,896	364	333	10,593	1,758	3,727	5,486	4,156	6,300	10,457	15,943	33,843
2002	3	540	7,174	7,714	10,997	0	0	10,997	2,172	3,412	5,584	4,611	6,791	11,402	16,986	35,697
2002	4	595	8,112	8,707	12,117	0	0	12,117	1,148	5,441	6,589	4,752	7,112	11,863	18,452	39,276
2002	5	636	8,605	9,241	12,372	112	0	12,484	786	5,739	6,525	3,889	8,526	12,415	18,940	40,665
2002	6	718	9,039	9,757	11,399	0	0	11,399	375	5,652	6,027	1,662	10,282	11,944	17,972	39,127
2002	7	765	8,845	9,610	13,017	0	0	13,017	290	6,067	6,357	1,582	11,222	12,804	19,161	41,787
2002	8	756	8,709	9,465	12,148	0	0	12,148	247	6,153	6,399	1,454	10,963	12,416	18,816	40,429
2002	9	719	8,360	9,078	11,582	0	0	11,582	190	5,889	6,079	1,449	10,759	12,208	18,287	38,948
2002	10	563	8,530	9,093	12,152	0	0	12,152	199	6,580	6,779	1,830	10,696	12,526	19,305	40,550
2002	11	548	7,435	7,982	11,608	78	72	11,759	165	5,448	5,613	1,732	9,872	11,604	17,217	36,958
2002	12	524	6,743	7,267	12,035	0	0	12,035	132	5,894	6,026	1,783	9,886	11,670	17,695	36,998
2003	1	554	7,406	7,960	12,592	133	95	12,820	181	5,998	6,180	1,924	10,014	11,938	18,117	38,897
2003	2	442	6,940	7,382	10,291	0	0	10,291	385	4,905	5,290	1,546	8,859	10,405	15,695	33,367
2003	3	553	7,486	8,039	11,119	0	0	11,119	372	5,250	5,621	1,359	10,181	11,540	17,161	36,319
2003	4	567	7,681	8,249	11,601	116	218	11,935	6	6,121	6,127	1,879	9,682	11,561	17,688	37,872
2003	5	715	8,412	9,127	12,086	0	0	12,086	0	6,064	6,064	2,111	9,896	12,008	18,071	39,285
2003	6	700	8,375	9,075	11,205	77	482	11,764	6	6,073	6,079	2,581	9,359	11,939	18,018	38,858
2003	7	732	8,645	9,377	12,590	0	0	12,590	9	6,068	6,077	2,940	9,381	12,321	18,397	40,365
2003	8	784	8,676	9,459	11,249	114	204	11,566	36	5,935	5,971	2,806	9,454	12,260	18,232	39,257
2003	9	659	8,372	9,031	11,780	186	265	12,231	2	6,162	6,164	3,370	8,795	12,165	18,329	39,591
2003	10	585	8,342	8,927	11,485	437	972	12,894	0	6,444	6,444	3,110	9,921	13,031	19,475	41,296
2003	11	581	6,803	7,383	10,099	611	1258	11,968	1	5,244	5,246	2,435	8,524	10,959	16,205	35,556
2003	12	514	6,708	7,223	11,994	171	102	12,268	0	5,946	5,946	2,782	9,621	12,403	18,349	37,839
Total 2003		7,386	93,845	101,232	138,090	1,845	3,596	143,532	999	70,209	71,208	28,843	113,688	142,531	213,738	458,502
Total 2002		7,353	95,537	102,891	141,951	553.68	405.89	142,910	8,237	65,413	73,650	31,135	112,409	143,544	217,195	462,996
Total 2001		6,818	95,487	102,305	144,011	9	539	144,559		82,472	82,472		145,933	145,933	228,405	475,270
Total 2000		6,323	95,560	101,883	144,595	368	869	145,832		91,722	91,722		136,695	136,695	228,417	476,132
Total 1999 ¹³		6,989	97,378	104,367	147,718			147,718		85,952	85,952		139,396	139,396	225,348	477,433
Total 1998		16,883	81,136	98,019	143,704		2,230	145,934		80,217	80,217		133,429	133,429	213,646	457,598
Total 1997		15,750	81,396	97,146	147,956		16	147,972		79,053	79,053		129,617	129,617	208,670	453,787
Total 1996 ¹²		13,777	70,091	83,868	143,327		962	144,289		71,448	71,448		123,521	123,521	194,969	423,127
Total 1995 ⁸		13,279	71,208	84,487	145,654		572	146,226		75,581	75,581		121,121	121,121	196,702	427,415
Total 1994		13,064	74,291	87,354	148,023		2,043	150,066		75,144	75,144		119,623	119,623	194,767	432,187
Total 1993		8,665	76,853	85,518	144,127			144,127		73,915	73,915		126,676	126,676	200,591	430,236
Total 1992		8,178	80,742	88,920	142,154			142,154		68,742	68,742		125,596	125,596	194,338	425,412
Total 1991		7,947	68,576	76,523	140,722			140,722		74,389	74,389		147,868	147,868	222,257	439,502
Total 1990 ³		7,253	73,939	81,192	140,528			140,528		78,461	78,461		157,664	157,664	236,125	457,845
Total 1989 ^{4,5}		6,919	58,720	65,639	143,221			143,221		75,513	75,513		121,029	121,029	196,542	405,402
Total 1988 ⁶		11,810	75,557	87,367	179,966			179,966		72,680	72,680		125,494	125,494	198,174	465,507
Total 1987 ⁷		13,622	88,147	101,769	188,800			188,800		55,212	55,212		170,703	170,703	225,915	516,484
Total 1986		25,278	105,442	130,720	190,584			190,584		50,947	50,947		151,189	151,189	202,136	523,440

1 There are two city owned recycling and disposal stations, one in the North end of the City (NRDS) and one in the South (SRDS).

2 Car weight estimate of 378.8 pounds per car based on study done from Jan - Dec 2000

Car weight estimate for 1999/2000 based on 333 pounds per car

Car weight estimate for 1998 based on 433 pounds per car.

Car weight estimate for 1994/95 based on 290 pounds per car.

3 Wood Waste Program at city owned transfer stations began in January, 1990

4 Apartment Recycling Program began in May, 1989

5 Curbside Yard Waste Collection began in January, 1989

6 Curbside Recycling Program began in February, 1988

7 Yard Waste "Clean Green" Program began in August, 1987

8 3,220 tons of residuals from the yard waste program were returned to SRDS in 1995 but not weighed in. These have been added in as self haul truck tons.

9 When tons are diverted to a private station it is usually due to equipment failure or maintenance.

10 Eastmont figures are "incoming" tons as reported by Waste Management.

11 Rabanco's tons are "incoming" beginning 1/1/1999 as reported by Rabanco.

12 158 commercial tons were taken to Klickitat from Rabanco in May 96 due to

container shortages. These tons have been added back in the above table.

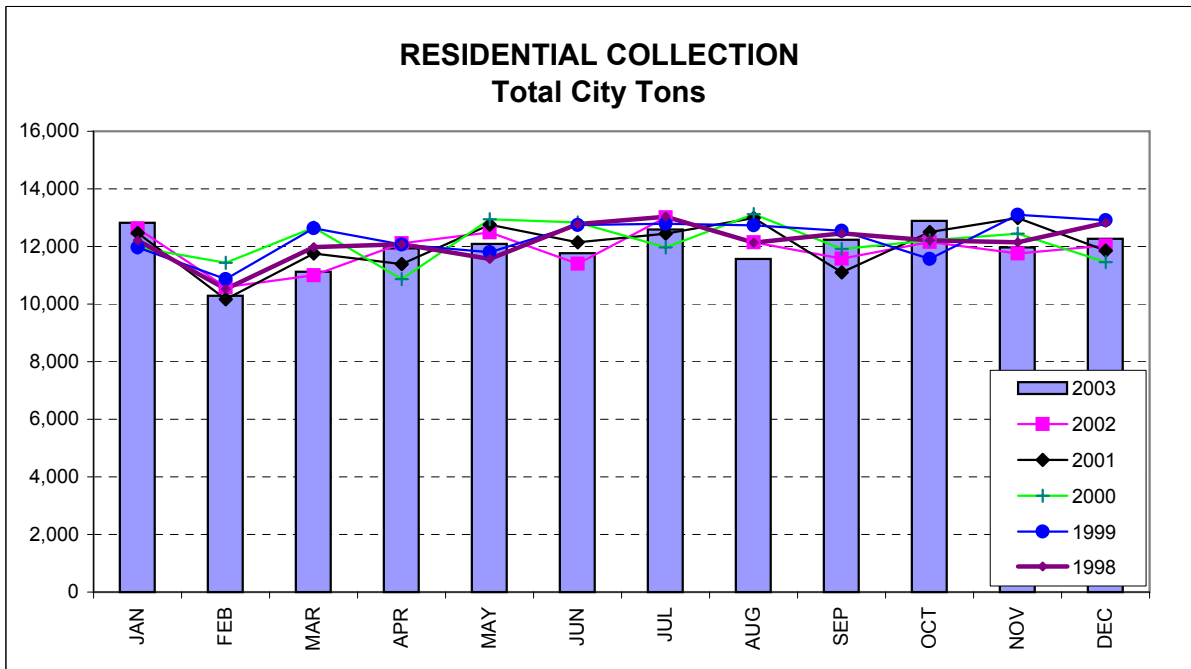
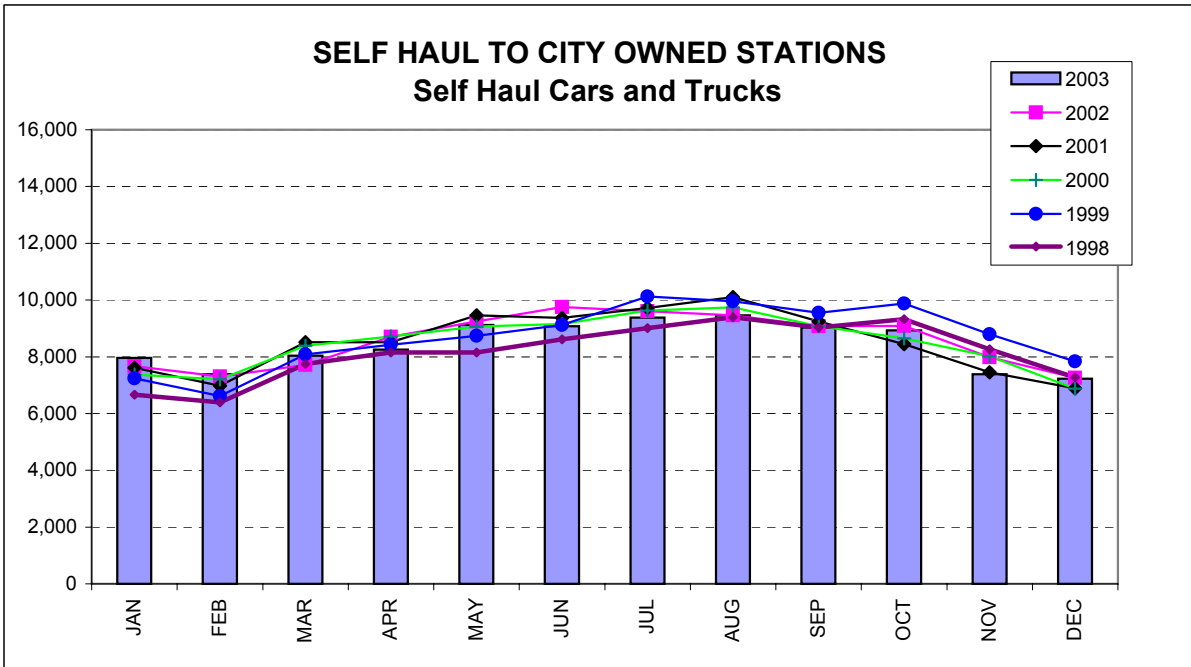
13 The large decrease in car tons from '98 to '99 is attributable to two factors. There was an increase

in the per ton "car" rate from \$8.50 to \$13.00. In addition, vans/pick-ups are no longer considered as

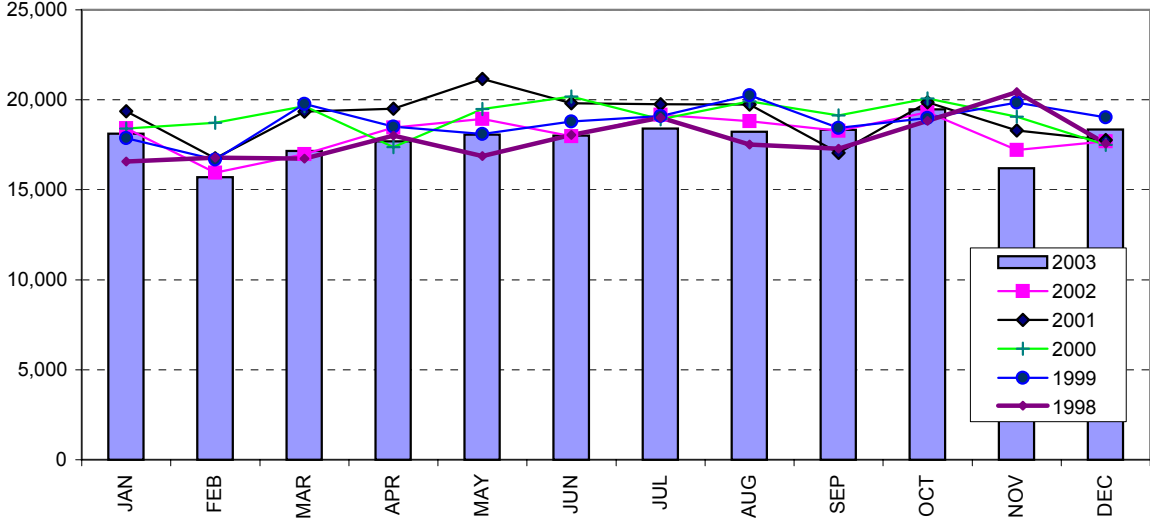
"car" rate & must pay the per ton rate as "trucks."

14 Beginning Jan 18, 2002 a portion of commercial garbage coming to city transfer stations.

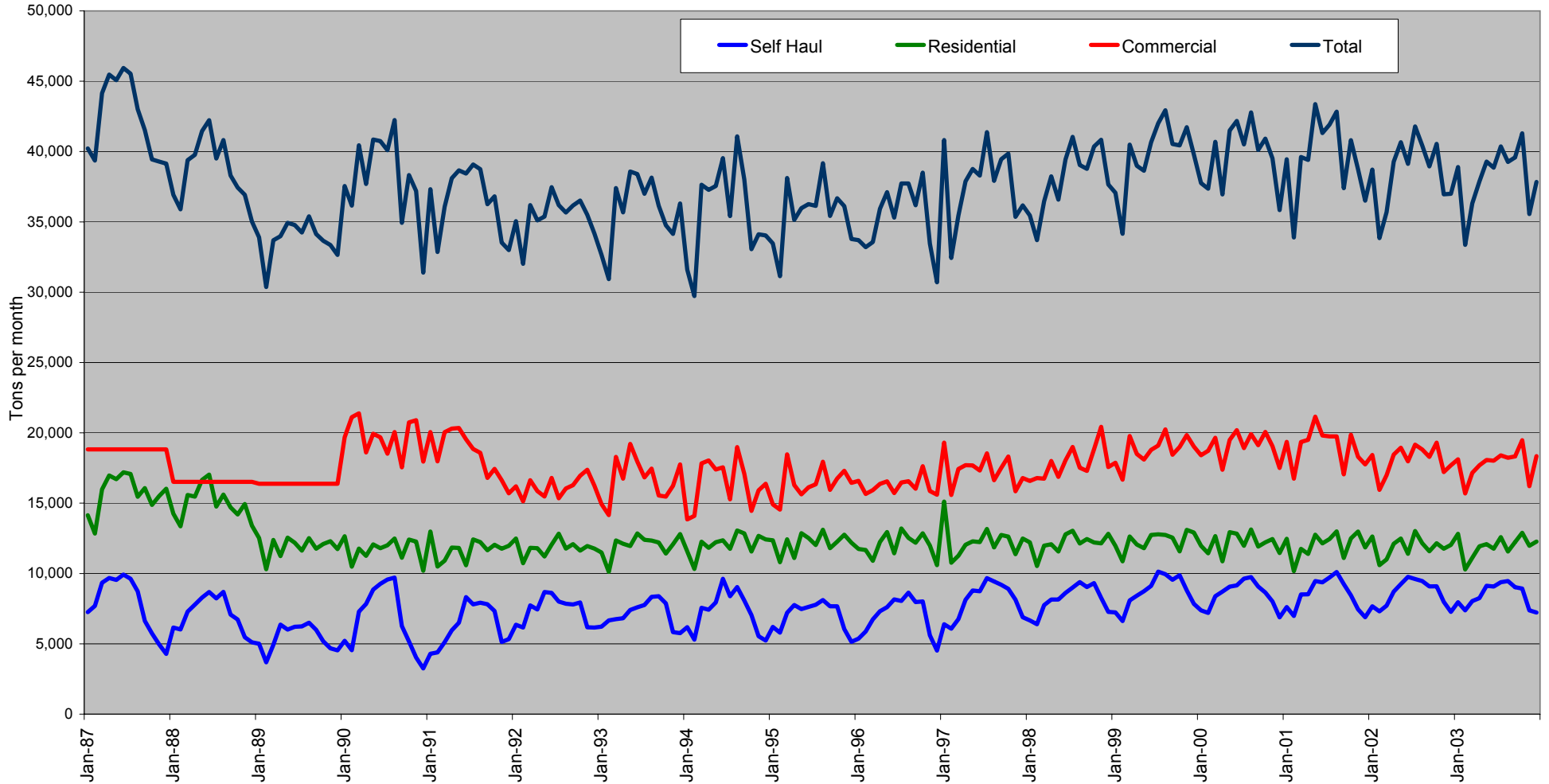
15 Tons for June 2003 are an estimate based on previous 5 months of data.



Commercial Garbage Total Tons Disposed



City of Seattle Garbage Disposal



Monthly commercial tonnage for 1987-1989 estimated from annual data.