

APARTMENT RECYCLING REPORT

December 2002

Seattle Public Utilities, Resource Planning Division, Forecasting & Evaluation Section

Report Date: January 16, 2003

Phone: (206) 684-4143

Tonnage Summary (without contaminants)

North End Tons (WM):

December 2002:	442 Tons	5.9% increase vs. same period in 2001
Cumulative Jan – Dec:	4,829 Tons	1.4% increase vs. same period in 2001

South End Tons (USD):

December 2002:	803 Tons	9.6% increase vs. same period in 2001
Cumulative Jan – Dec:	8,514 Tons	2.5% increase vs. same period in 2001

Citywide Tons:

December 2002:	1,245 Tons	8.2% increase vs. same period in 2001
Cumulative Jan - Dec:	13,343 Tons	2.1% increase vs. same period in 2001

Basics of City-Sponsored Apartment Recycling Program

Before April 1, 2000, Seattle Public Utilities hired four private contractors to collect multi-family recycling. Each collected different materials and used different kinds of containers. With the new contracts, SPU uses only two contractors and the materials collected and containers used for set-out are uniform throughout the city. Further, the range of materials is broader (including more types of paper and plastics) and is the same range of materials picked up at single-family residences.

Service Areas:

- North End: Waste Management services the area north of the Ship Canal.
- South End: USD services the area south of the Ship Canal.

Materials:

- Commingled collection with separate container for glass
- Service must include collection of aluminum, glass, mixed paper, newspaper, tin, plastic, plastic bags, plastic food tubs, as well as milk & juice cartons.

Subscription Status as of December 2002:

	Buildings Signed Up	Units Signed Up	Eligible Buildings	Eligible Units	% Bldgs Signed Up	% Units Signed Up
North End	1,796	30,545	2,287	35,969	78.5%	85.0%
South End	2,629	60,763	3,637	74,884	72.3%	81.1%
Citywide	4,425	91,308	5,924	110,853	74.7%	82.4%

Service Type Details:

Multi-Family buildings with dumpster garbage service can choose either apartment recycling service or single-family style curbside service. Most buildings with five or fewer units choose single-family style curbside service.

	Bldgs with Curb Recycling	Bldgs with Apt Recycling	Total Buildings with Recycling	Units with Curb Recycling	Units with Apt Recycling	Total Units with Recycling
North End	246	1,550	1,796	1,174	29,371	30,545
South End	381	2,248	2,629	2,488	58,275	60,763
Citywide	627	3,798	4,425	3,662	87,646	91,308

APARTMENT RECYCLING PROGRAM

NORTH END TONNAGE DATA													Sign-Up Data				
Yr	Mo	ALUM	FERROUS METAL	GLASS	MIXED PAPER	NEWS-PAPER	PLASTIC (PET/HDPE)	TIN	CONTAM-INANTS	TOTAL w/cont	TOTAL w/o cont	Bldgs	Units	Units/ Bldg	Lbs/ Bldg	Lbs/ Unit	
2001	1	2.2	0.5	56.5	151.7	144.9	6.6	3.5	10.7	376.6	365.8	NA	NA	NA	NA	NA	
2001	2	2.1	0.5	56.3	151.0	144.3	6.6	3.4	10.7	375.0	364.3	NA	NA	NA	NA	NA	
2001	3	2.1	0.5	56.1	150.7	143.9	6.6	3.4	10.7	374.2	363.5	NA	NA	NA	NA	NA	
2001	4	2.3	0.6	59.0	158.5	151.4	6.9	3.6	11.2	393.5	382.3	NA	NA	NA	NA	NA	
2001	5	2.5	0.6	66.5	178.6	170.6	7.8	4.1	12.7	443.5	430.9	NA	NA	NA	NA	NA	
2001	6	2.4	0.6	62.3	167.3	159.9	7.3	3.8	11.9	415.5	403.6	NA	NA	NA	NA	NA	
2001	7	2.2	0.6	57.2	153.7	146.8	6.7	3.5	10.9	381.5	370.6	NA	NA	NA	NA	NA	
2001	8	2.5	0.6	66.5	178.5	170.5	7.8	4.1	12.6	443.1	430.5	NA	NA	NA	NA	NA	
2001	9	2.2	0.6	58.5	157.1	150.1	6.9	3.6	11.1	390.1	379.0	NA	NA	NA	NA	NA	
2001	10	2.5	0.6	65.5	175.8	167.9	7.7	4.0	12.5	436.5	424.1	NA	NA	NA	NA	NA	
2001	11	2.5	0.6	66.1	177.5	169.6	7.8	4.0	12.6	440.8	428.2	NA	NA	NA	NA	NA	
2001	12	2.5	0.6	64.5	173.3	165.5	7.6	3.9	12.3	430.2	417.9	NA	NA	NA	NA	NA	
2002	1	2.5	0.6	64.5	173.0	165.3	7.6	3.9	12.3	429.7	417.4	NA	NA	NA	NA	NA	
2002	2	2.1	0.5	54.4	146.2	139.6	6.4	3.3	10.4	362.9	352.6	NA	NA	NA	NA	NA	
2002	3	2.0	0.5	53.0	142.2	135.8	6.2	3.2	10.1	353.0	342.9	1,732	29,212	16.9	396.0	23.5	
2002	4	2.4	0.6	62.2	167.1	159.6	7.3	3.8	11.8	414.9	403.1	1,732	29,212	16.9	465.5	27.6	
2002	5	2.4	0.6	63.3	170.0	162.4	7.4	3.9	12.0	422.1	410.1	1,736	29,269	16.9	472.4	28.0	
2002	6	2.3	0.6	60.1	161.4	154.2	7.1	3.7	11.4	400.8	389.4	1,742	29,398	16.9	447.0	26.5	
2002	7	2.4	0.6	63.9	171.6	163.9	7.5	3.9	12.2	426.1	413.9	1,751	29,493	16.8	472.8	28.1	
2002	8	2.5	0.6	65.0	174.5	166.7	7.6	4.0	12.4	433.4	421.0	1,766	29,672	16.8	476.8	28.4	
2002	9	2.4	0.6	63.0	169.2	161.6	7.4	3.9	12.0	420.1	408.1	1,774	30,154	17.0	460.1	27.1	
2002	10	2.5	0.6	65.5	175.9	168.0	7.7	4.0	12.5	436.7	424.2	1,790	30,524	17.1	474.0	27.8	
2002	11	2.4	0.6	62.4	167.5	160.0	7.3	3.8	11.9	415.8	404.0	1,794	30,522	17.0	450.3	26.5	
2002	12	2.6	0.7	68.3	183.4	175.2	8.0	4.2	13.0	455.4	442.4	1,796	30,545	17.0	492.7	29.0	

2002 Total:	28.5	7.2	745.7	2,002.0	1,912.4	87.5	45.6	141.9	4,970.9	4,829.0	2002 Avg:	460.8	27.2
2001 Total:	28.1	7.1	735.2	1,973.7	1,885.4	86.3	44.9	139.9	4,900.6	4,760.7	2001 Avg: ¹	NA	NA
2000 Total:	33.8	5.0	891.2	2,569.3	1,867.1	87.6	52.9	119.5	5,626.4	5,507.0	2000 Avg: ³	NA	NA
1999 Total:	66.5	NA	1,688.5	5,081.8	2,208.9	86.5	54.1	111.9	9,298.1	9,186.2	1999 Avg:	673.4	28.9
1998 Total:	68.2	NA	1,626.6	4,507.7	2,452.0	98.8	93.7	129.0	8,976.0	8,847.0	1998 Avg:	694.7	29.6
1997 Total:	66.2	NA	1,420.4	4,206.5	1,982.7	86.3	100.3	89.5	7,951.9	7,862.3	1997 Avg:	656.5	28.0
1996 Total:	67.4	NA	1,332.8	2,863.2	2,531.1	77.7	100.3	61.8	7,034.3	6,972.5	1996 Avg:	629.8	25.9
1995 Total:	47.2	NA	1,294.1	2,169.0	2,530.9	12.6	107.6	NA	6,161.3	6,161.3	1995 Avg:	633.5	24.8
1994 Total:	48.4	NA	1,060.6	2,746.4	1,209.6	NA	98.8	NA	5,163.8	5,163.8	1994 Avg:	701.5	25.3
1993 Total:	40.1	NA	724.1	2,483.9	66.4	NA	84.4	NA	3,398.9	3,398.9	1993 Avg:	740.1	23.1
1992 Total:	NA	NA	733.4	1,436.2	503.9	NA	68.7	NA	2,742.1	2,742.1	1992 Avg:	845.9	27.9
1991 Total:	NA	NA	409.9	661.2	659.3	NA	23.6	NA	1,754.0	1,754.0	1991 Avg:	777.1	25.5
1990 Total:	NA	NA	228.7	500.8	358.4	NA	6.3	NA	1,094.2	1,094.2	1990 Avg:	712.1	22.8
1989 Total:	NA	NA	69.9	42.7	192.8	NA	NA	NA	305.4	305.4	1989 Avg:	NA	NA

NORTH END PERCENTAGE BREAKDOWN BY MATERIAL									
YEAR	ALUM	FERROUS METAL	GLASS	MIXED PAPER	NEWS-PAPER	PLASTIC (PET/HDPE)	TIN	CONTAM-INANTS	TOTAL w/cont
2002 Avg:	0.57%	0.15%	15.00%	40.28%	38.47%	1.76%	0.92%	2.85%	100%
2001 Avg:	0.57%	0.15%	15.00%	40.28%	38.47%	1.76%	0.92%	2.85%	100%
2000 Avg:	0.69%	0.09%	15.84%	45.66%	33.18%	1.56%	0.94%	2.12%	100%
1999 Avg:	1.36%	NA	18.16%	54.65%	23.76%	0.93%	0.58%	1.20%	100%
1998 Avg:	1.39%	NA	18.12%	50.22%	27.32%	1.10%	1.04%	1.44%	100%
1997 Avg:	1.35%	NA	17.86%	52.90%	24.93%	1.09%	1.26%	1.13%	100%
1996 Avg:	1.38%	NA	18.95%	40.70%	35.98%	1.11%	1.43%	0.88%	100%
1995 Avg:	0.96%	NA	21.00%	35.20%	41.08%	0.20%	1.75%	NA	100%
1994 Avg:	0.99%	NA	20.54%	53.18%	23.42%	NA	1.91%	NA	100%
1993 Avg:	0.82%	NA	21.30%	73.08%	1.95%	NA	2.48%	NA	100%
1992 Avg:	NA	NA	26.74%	52.37%	18.38%	NA	2.50%	NA	100%
1991 Avg:	NA	NA	23.37%	37.69%	37.59%	NA	1.35%	NA	100%
1990 Avg:	NA	NA	20.90%	45.77%	32.76%	NA	0.58%	NA	100%
1989 Avg:	NA	NA	22.90%	13.97%	63.13%	NA	NA	NA	100%

APARTMENT RECYCLING PROGRAM

SOUTH END TONNAGE DATA												Sign-Up Data				
Yr	Mo	ALUM	FERROUS METAL	GLASS	MIXED PAPER	NEWS-PAPER	PLASTIC (PET/HDPE)	TIN	CONTAM-INANTS	TOTAL w/cont	TOTAL w/o cont	Bldgs	Units	Units/ Bldg	Lbs/ Bldg	Lbs/ Unit
2001	1	3.5	1.6	129.4	306.3	237.5	11.2	5.4	21.3	716.2	694.9	NA	NA	NA	NA	NA
2001	2	3.0	1.3	108.8	257.5	199.7	9.5	4.5	17.9	602.1	584.2	NA	NA	NA	NA	NA
2001	3	3.2	1.4	116.4	275.5	213.7	10.1	4.8	19.1	644.3	625.1	2,690	53,199	19.8	464.8	23.5
2001	4	3.3	1.5	122.4	289.7	224.7	10.6	5.1	20.1	677.4	657.3	NA	NA	NA	NA	NA
2001	5	3.8	1.7	140.5	332.6	257.9	12.2	5.8	23.1	777.7	754.6	NA	NA	NA	NA	NA
2001	6	3.4	1.5	124.7	295.2	228.9	10.8	5.2	20.5	690.2	669.7	NA	NA	NA	NA	NA
2001	7	3.5	1.6	130.1	308.0	238.9	11.3	5.4	21.4	720.3	698.9	NA	NA	NA	NA	NA
2001	8	3.8	1.7	139.5	330.2	256.1	12.1	5.8	22.9	772.2	749.3	NA	NA	NA	NA	NA
2001	9	3.2	1.4	118.4	280.3	217.4	10.3	4.9	19.5	655.3	635.9	NA	NA	NA	NA	NA
2001	10	3.8	1.7	141.1	333.9	258.9	12.3	5.9	23.2	780.7	757.5	NA	NA	NA	NA	NA
2001	11	3.8	1.7	139.6	330.5	256.3	12.1	5.8	22.9	772.8	749.8	NA	NA	NA	NA	NA
2001	12	3.7	1.7	136.5	323.0	250.5	11.9	5.7	22.4	755.2	732.8	NA	NA	NA	NA	NA
2002	1	3.2	1.4	116.2	275.0	213.2	10.1	4.8	19.1	642.9	623.8	NA	NA	NA	NA	NA
2002	2	3.1	1.4	113.5	268.6	208.3	9.9	4.7	18.7	628.2	609.5	NA	NA	NA	NA	NA
2002	3	3.2	1.4	116.3	275.2	213.4	10.1	4.8	19.1	643.4	624.3	2,561	59,306	23.2	487.5	21.1
2002	4	3.4	1.5	126.8	300.1	232.7	11.0	5.3	20.8	701.7	680.9	2,561	59,306	23.2	531.7	23.0
2002	5	3.8	1.7	139.1	329.2	255.3	12.1	5.8	22.9	769.8	746.9	2,571	59,668	23.2	581.0	25.0
2002	6	3.5	1.6	130.6	309.2	239.8	11.3	5.4	21.5	723.0	701.5	2,587	59,799	23.1	542.3	23.5
2002	7	3.8	1.7	141.9	335.9	260.5	12.3	5.9	23.3	785.5	762.2	2,594	59,881	23.1	587.6	25.5
2002	8	3.7	1.7	137.2	324.6	251.8	11.9	5.7	22.5	759.1	736.5	2,602	60,314	23.2	566.1	24.4
2002	9	3.6	1.6	133.9	316.8	245.7	11.6	5.6	22.0	740.9	718.9	2,614	60,621	23.2	550.0	23.7
2002	10	3.9	1.8	143.9	340.5	264.1	12.5	6.0	23.6	796.3	772.6	2,632	61,087	23.2	587.1	25.3
2002	11	3.7	1.7	136.7	323.5	250.9	11.9	5.7	22.5	756.5	734.0	2,627	60,930	23.2	558.8	24.1
2002	12	4.1	1.8	149.5	353.9	274.5	13.0	6.2	24.6	827.5	803.0	2,629	60,763	23.1	610.9	26.4
2002 Total:		43.0	19.3	1585.4	3752.5	2910.3	137.7	65.8	260.6	8774.7	8514.1			2002 Avg:	560.3	24.2
2001 Total:		42.0	18.8	1,547.4	3,662.6	2,840.5	134.4	64.2	254.3	8,564.4	8,310.1			2001 Avg: ¹	464.8	23.5
2000 Total:		31.2	12.8	1,159.4	2,699.9	2,137.8	92.3	50.6	172.7	6,356.7	6,184.0			2000 Avg:	662.3	27.4
1999 Total:		2.1	NA	220.1	566.1	554.7	0.8	12.4	NA	1,356.2	1,356.2			1999 Avg:	515.4	20.0
1998 Total:		2.0	NA	208.7	512.6	526.4	0.8	12.4	NA	1,262.8	1,262.8			1998 Avg:	492.3	19.2
1997 Total:		2.7	NA	226.0	479.8	539.2	1.0	14.2	NA	1,263.0	1,263.0			1997 Avg:	517.3	20.1
1996 Total:		2.5	NA	194.5	433.5	510.1	0.9	13.0	NA	1,154.4	1,154.4			1996 Avg:	506.9	19.1
1995 Total:		2.4	NA	164.2	386.7	464.5	0.9	12.4	NA	1,031.1	1,031.1			1995 Avg:	490.7	17.7
1994 Total:		2.9	NA	164.0	266.8	468.6	0.8	12.1	NA	915.2	915.2			1994 Avg:	477.0	16.9
1993 Total:		6.9	NA	45.4	33.4	369.2	0.3	1.6	NA	456.9	456.9			1993 Avg:	318.9	10.2
1992 Total:		3.3	NA	2.8	2.3	222.8	NA	NA	NA	231.3	231.3			1992 Avg:	330.5	9.8
1991 Total:		0.9	NA	0.7	0.5	73.4	NA	NA	NA	75.6	75.6			1991 Avg:	345.1	7.6

SOUTH END PERCENTAGE BREAKDOWN BY MATERIAL									
YEAR	ALUM	FERROUS METAL	GLASS	MIXED PAPER	NEWS-PAPER	PLASTIC (PET/HDPE)	TIN	CONTAM-INANTS	TOTAL w/cont
2002 Avg:	0.49%	0.22%	18.07%	42.77%	33.17%	1.57%	0.75%	2.97%	100%
2001 Avg:	0.49%	0.22%	18.07%	42.77%	33.17%	1.57%	0.75%	2.97%	100%
2000 Avg:	0.49%	0.20%	18.24%	42.47%	33.63%	1.45%	0.80%	2.72%	100%
1999 Avg:	0.16%	NA	16.23%	41.74%	40.90%	0.06%	0.91%	NA	100%
1998 Avg:	0.16%	NA	16.52%	40.59%	41.68%	0.06%	0.99%	NA	100%
1997 Avg:	0.21%	NA	17.90%	37.99%	42.69%	0.08%	1.13%	NA	100%
1996 Avg:	0.22%	NA	16.85%	37.55%	44.19%	0.08%	1.12%	NA	100%
1995 Avg:	0.23%	NA	15.93%	37.50%	45.05%	0.08%	1.21%	NA	100%
1994 Avg:	0.31%	NA	17.92%	29.16%	51.20%	0.09%	1.33%	NA	100%
1993 Avg:	1.51%	NA	9.94%	7.32%	80.81%	0.07%	0.35%	NA	100%
1992 Avg:	1.44%	NA	1.22%	1.01%	96.33%	NA	NA	NA	100%
1991 Avg:	1.22%	NA	0.91%	0.69%	97.18%	NA	NA	NA	100%

APARTMENT RECYCLING PROGRAM

TOTAL CITY TONNAGE DATA													Sign-Up Data				
Yr	Mo	ALUM	FERROUS METAL	GLASS	MIXED PAPER	NEWS-PAPER	PLASTIC (PET/HDPE)	TIN	CONTAM-INANTS	TOTAL w/cont	TOTAL w/o cont	Bldgs	Units	Units/ Bldg	Lbs/ Bldg	Lbs/ Unit	
2001	1	5.7	2.1	185.9	458.0	382.4	17.9	8.8	32.0	1,092.8	1,060.8	NA	NA	NA	NA	NA	
2001	2	5.1	1.9	165.1	408.5	344.0	16.1	8.0	28.6	977.2	948.6	NA	NA	NA	NA	NA	
2001	3	5.3	2.0	172.5	426.2	357.6	16.7	8.3	29.8	1,018.4	988.6	3,935	73,707	18.7	482.1	25.7	
2001	4	5.6	2.1	181.4	448.2	376.1	17.6	8.7	31.4	1,071.0	1,039.6	NA	NA	NA	NA	NA	
2001	5	6.4	2.4	207.1	511.2	428.6	20.0	9.9	35.8	1,221.2	1,185.5	NA	NA	NA	NA	NA	
2001	6	5.8	2.1	187.0	462.5	388.8	18.1	9.0	32.4	1,105.7	1,073.3	NA	NA	NA	NA	NA	
2001	7	5.7	2.1	187.4	461.7	385.7	18.0	8.9	32.3	1,101.8	1,069.5	NA	NA	NA	NA	NA	
2001	8	6.3	2.3	206.0	508.7	426.6	19.9	9.9	35.6	1,215.3	1,179.8	NA	NA	NA	NA	NA	
2001	9	5.4	2.0	176.9	437.4	367.4	17.2	8.5	30.6	1,045.4	1,014.8	NA	NA	NA	NA	NA	
2001	10	6.3	2.4	206.5	509.7	426.9	19.9	9.9	35.6	1,217.2	1,181.6	NA	NA	NA	NA	NA	
2001	11	6.3	2.3	205.8	508.0	425.9	19.9	9.8	35.5	1,213.6	1,178.0	NA	NA	NA	NA	NA	
2001	12	6.2	2.3	201.0	496.2	416.0	19.4	9.6	34.7	1,185.4	1,150.7	NA	NA	NA	NA	NA	
2002	1	5.6	2.0	180.6	448.0	378.5	17.7	8.8	31.4	1,072.6	1,041.2	NA	NA	NA	NA	NA	
2002	2	5.2	1.9	167.9	414.8	348.0	16.3	8.0	29.0	991.1	962.1	NA	NA	NA	NA	NA	
2002	3	5.2	1.9	169.2	417.3	349.2	16.3	8.1	29.2	996.4	967.2	4,293	88,518	20.6	448.2	21.7	
2002	4	5.8	2.1	189.0	467.2	392.4	18.3	9.1	32.7	1,116.6	1,084.0	4,293	88,518	20.6	450.6	21.9	
2002	5	6.2	2.3	202.4	499.2	417.7	19.5	9.6	34.9	1,191.9	1,157.0	4,307	88,937	20.6	503.3	24.4	
2002	6	5.8	2.2	190.8	470.6	394.0	18.4	9.1	32.9	1,123.8	1,090.9	4,329	89,197	20.6	534.5	25.9	
2002	7	6.3	2.3	205.8	507.5	424.5	19.8	9.8	35.5	1,211.6	1,176.1	4,345	89,374	20.6	502.1	24.4	
2002	8	6.2	2.3	202.2	499.2	418.5	19.5	9.7	34.9	1,192.4	1,157.5	4,368	89,986	20.6	538.5	26.1	
2002	9	6.0	2.2	196.9	486.0	407.3	19.0	9.4	34.0	1,161.0	1,127.0	4,388	90,775	20.7	527.6	25.5	
2002	10	6.4	2.4	209.4	516.4	432.1	20.2	10.0	36.1	1,232.9	1,196.8	4,422	91,611	20.7	509.7	24.6	
2002	11	6.1	2.3	199.1	491.0	410.9	19.2	9.5	34.3	1,172.3	1,138.0	4,421	91,452	20.7	541.4	26.2	
2002	12	6.7	2.5	217.8	537.3	449.7	21.0	10.4	37.6	1,283.0	1,245.4	4,425	91,308	20.6	514.3	24.9	
2002 Total:		71.5	26.6	2,331.1	5,754.6	4,822.7	225.3	111.4	402.5	13,745.6	13,343.1			2002 Avg:	515.4	25.0	
2001 Total:		70.0	26.0	2,282.6	5,636.3	4,725.9	220.7	109.2	394.2	13,465.0	13,070.8			2001 Avg: ¹	502.5	26.8	
2000 Total:		65.0	17.8	2,050.6	5,269.2	4,004.9	179.9	103.5	292.2	11,983.2	11,691.0			2000 Avg: ³	468.6	23.5	
1999 Total:		68.6	NA	1,908.6	5,647.9	2,763.6	87.3	66.4	111.9	10,654.3	10,542.4			1999 Avg:	654.7	27.6	
1998 Total:		70.2	NA	1,835.2	5,020.4	2,978.4	99.6	106.1	129.0	10,238.8	10,109.8			1998 Avg:	669.2	28.1	
1997 Total:		68.9	NA	1,646.4	4,686.3	2,521.9	87.3	114.5	89.5	9,214.8	9,125.3			1997 Avg:	639.2	26.8	
1996 Total:		69.9	NA	1,527.3	3,296.6	3,041.2	78.7	113.3	61.8	8,188.7	8,126.9			1996 Avg:	605.3	24.8	
1995 Total:		49.6	NA	1,458.3	2,555.7	2,995.5	13.5	120.0	NA	7,192.4	7,192.4			1995 Avg:	608.2	22.9	
1994 Total:		51.3	NA	1,224.6	3,013.2	1,678.1	0.8	111.0	NA	6,079.0	6,079.0			1994 Avg:	657.8	23.6	
1993 Total:		47.0	NA	769.5	2,517.4	435.6	0.3	85.9	NA	3,855.7	3,855.7			1993 Avg:	646.0	20.2	
1992 Total:		3.3	NA	736.2	1,438.5	726.7	NA	68.7	NA	2,973.4	2,973.4			1992 Avg:	753.3	24.4	
1991 Total:		0.9	NA	410.6	661.7	732.7	NA	23.6	NA	1,829.5	1,829.5			1991 Avg:	733.5	23.4	
1990 Total:		NA	NA	228.7	500.8	358.4	NA	6.3	NA	1,094.2	1,094.2			1990 Avg:	712.1	22.8	
1989 Total:		NA	NA	69.9	42.7	192.8	NA	NA	NA	305.4	305.4			1989 Avg:	NA	NA	

TOTAL CITY PERCENTAGE BREAKDOWN BY MATERIAL									
YEAR	ALUM	FERROUS METAL	GLASS	MIXED PAPER	NEWS-PAPER	PLASTIC (PET/HDPE)	TIN	CONTAM-INANTS	TOTAL w/cont
2002 Avg:	0.52%	0.19%	16.96%	41.86%	35.09%	1.64%	0.81%	2.93%	100%
2001 Avg:	0.52%	0.19%	16.95%	41.86%	35.10%	1.64%	0.81%	2.93%	100%
2000 Avg:	0.54%	0.15%	17.11%	43.97%	33.42%	1.50%	0.86%	2.44%	100%
1999 Avg:	0.64%	NA	17.91%	53.01%	25.94%	0.82%	0.62%	1.05%	100%
1998 Avg:	0.69%	NA	17.92%	49.03%	29.09%	0.97%	1.04%	1.26%	100%
1997 Avg:	0.75%	NA	17.87%	50.86%	27.37%	0.95%	1.24%	0.97%	100%
1996 Avg:	0.85%	NA	18.65%	40.26%	37.14%	0.96%	1.38%	0.75%	100%
1995 Avg:	0.69%	NA	20.27%	35.53%	41.65%	0.19%	1.67%	NA	100%
1994 Avg:	0.84%	NA	20.14%	49.57%	27.61%	0.01%	1.83%	NA	100%
1993 Avg:	1.22%	NA	19.96%	65.29%	11.30%	0.01%	2.23%	NA	100%
1992 Avg:	NA	NA	24.76%	48.38%	24.44%	NA	2.31%	NA	100%
1991 Avg:	NA	NA	22.44%	36.17%	40.05%	NA	1.29%	NA	100%
1990 Avg:	NA	NA	20.90%	45.77%	32.76%	NA	0.58%	NA	100%
1989 Avg:	NA	NA	22.90%	13.97%	63.13%	NA	0.00%	NA	100%

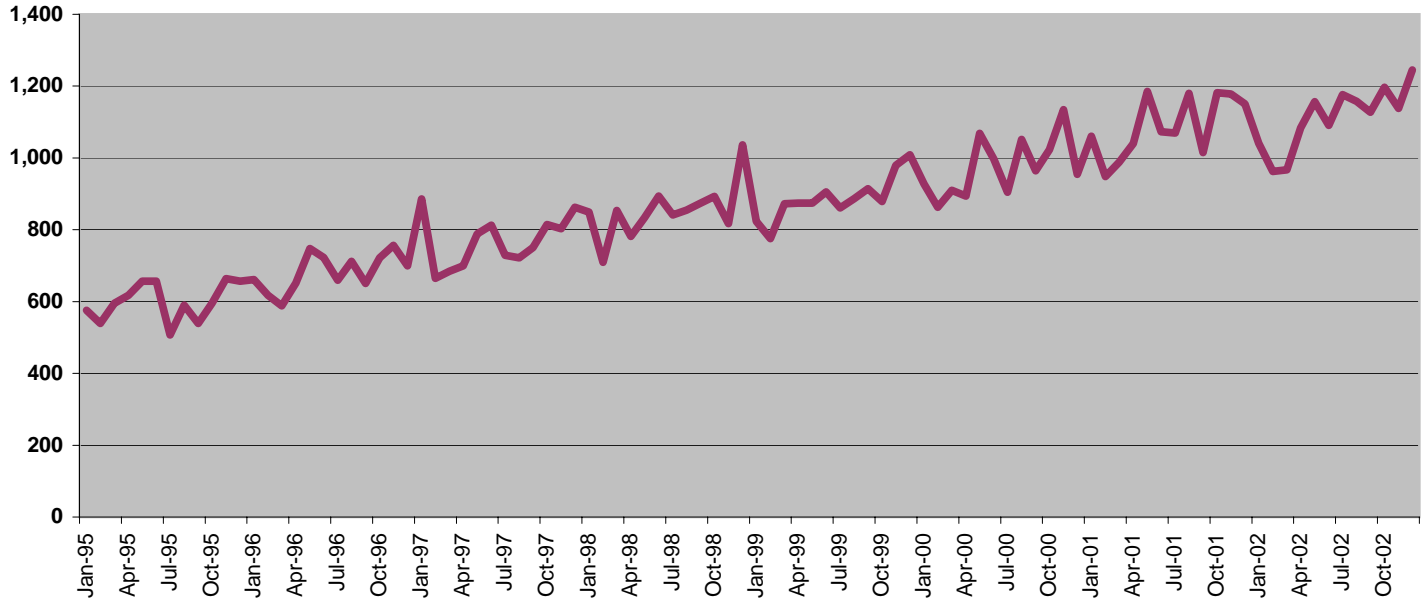
¹ New billing system took effect April 2001. New subscription information not available until March 2002

² New materials (polycoated paper, aseptic packaging and additional plastics) added to program effective April 2000.

³ Subscription data inaccurate due to transfer of accounts during change in contractors Jan 2000

APARTMENT RECYCLING

Monthly Tons Collected
(not including contamination¹)



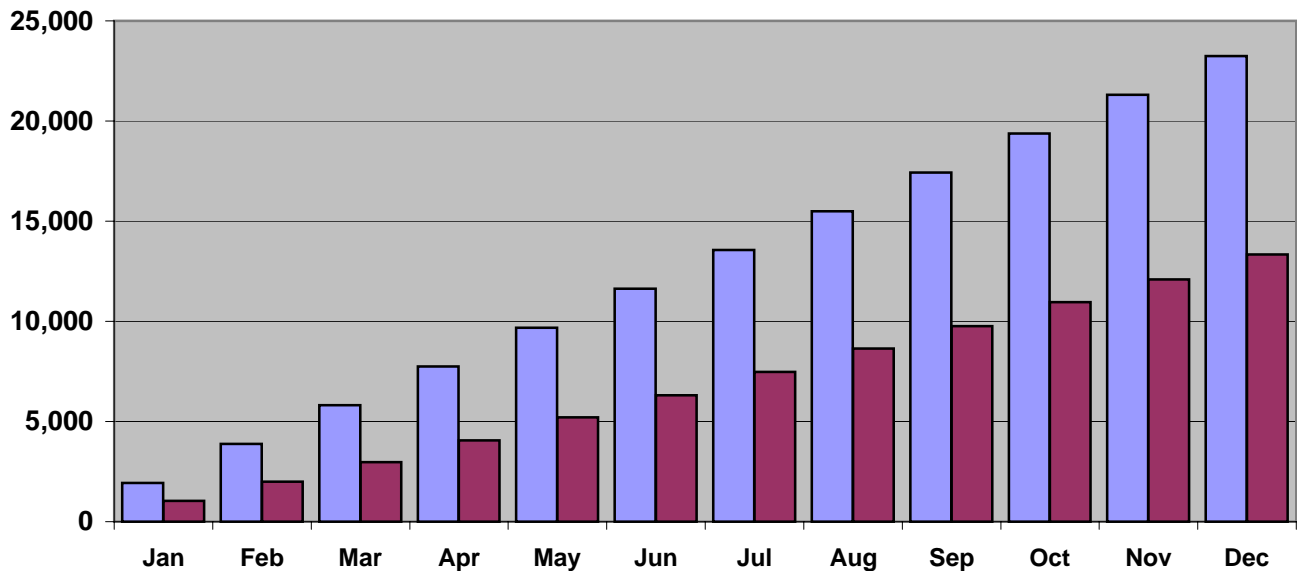
(1) Contamination rate established through composition study performed 2000-2001 applied to tons collected since April 2000. Prior to that, contamination data is incomplete.

APARTMENT RECYCLING

Cumulative Tons Collected 2002

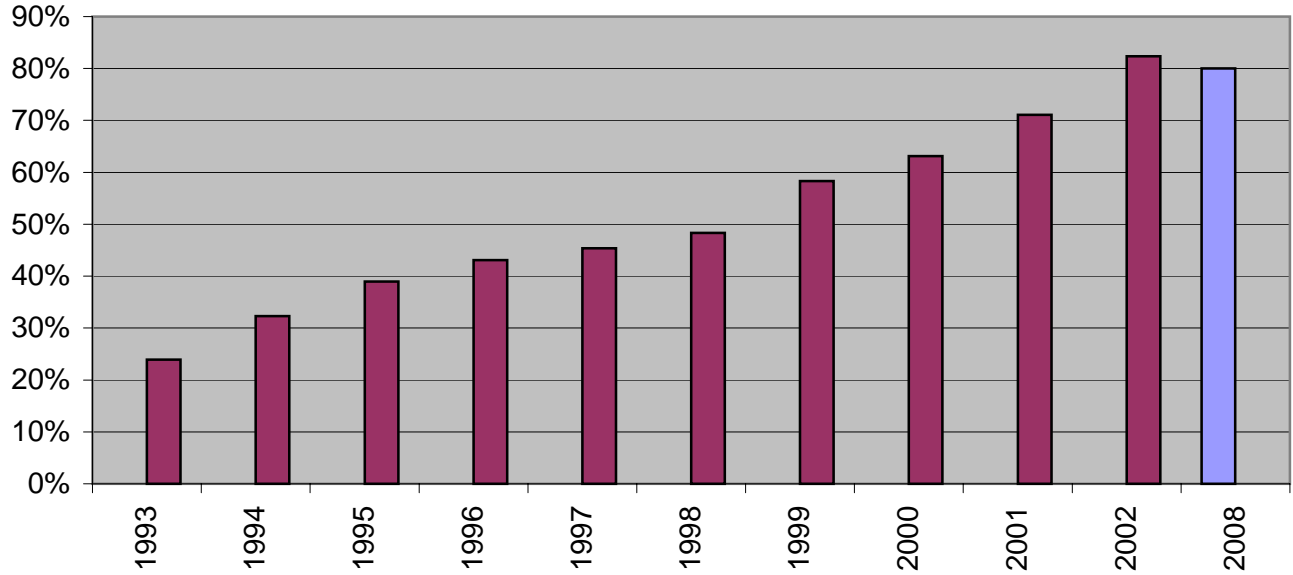
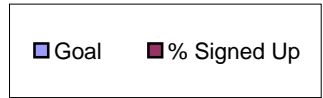
(not including contamination)

2008 Goal
2002 Actual



APARTMENT RECYCLING

Accounts Signed-up¹



¹ As of 2002 chart shows % of units signed up. Before 2002, chart shows % of buildings signed up