

ORGANICS REPORT

4th Quarter 2014

(Formerly Known as Yard Waste Report)

Seattle Public Utilities, Economic Services Section

Report Date: February 26, 2015

Phone: (206) 684-4143

Tonnage Breakdown

Self Haul¹

Q4 2014: 931 Tons 40.0% decrease vs. same period in 2013
Cumulative YTD Self Haul: 4199 Tons 33.2% decrease vs. same period in 2013

Residential

(single family and multi family)

Q4 2014: 22,327 Tons 4.5% increase vs. same period in 2013
Cumulative YTD Curbside: 82,588 Tons 0.2% increase vs. same period in 2013

Commercial

(contract and non contract tons)

Q4 2014: 13,177 Tons 7.0% increase vs. same period in 2013
Cumulative YTD Commercial: 50,111 Tons 8.7% increase vs. same period in 2013

Organics Subscription Information by Premises² Type

Can premises customers are those that receive can garbage service. Can customers can request Exempt service if they do backyard food waste composting. Dumpster premises customers are subscribed to dumpster garbage service. "Curb" service is the same as can premise service, the customers moves the can out to the curb for collection. "On Site" service does not require the customer to move their container(s) out to the curb, similar to dumpster service. "Liner" service means a new liner is provided after each collection.

Can Premises by Subscription Type

Dec-14	13 gal	32 gal	90 gal	Curb Liner	Onsite Liner	Total Signed Up	Exempt	Not Signed Up
Can Premises	31,870	16,358	94,883	357	60	142,953	5,667	0
%	21%	11%	64%	0.24%	0.04%	96%	4%	0%

Dumpster Premises by Subscription Type

Dec 14	Curb No Liner	Curb Liner	Onsite Liner	Total Signed Up	Exempt	Not Signed Up
Multifamily Dumpster	1,669	2,527	925	5,013	134	56
%	32%	48%	18%	96%	3%	1%

¹ There have been fewer Self Haul trips due to the closure of the North Recycle & Disposal Station on Jan 20, 2014 for a rebuild.

² A premise is roughly equal to a building in our billing system. An apartment building is typically equal to one premise.

Basics of Residential Organics Program

Service: Beginning April 2009, collection frequency increased from bi-weekly to weekly pickup. All single family customers are required to sign up for organics service or request an exemption if they have backyard food waste composting. As of September 2011 multifamily and multiplex customers are also required to sign up for organics service. Multifamily customers can sign up for residential can/cart curbside service or onsite can/cart service. (Curbside service requires the customer to bring their container to the curb; onsite service does not require the customer to move their container.) Liner service, which includes a biodegradable plastic liner placed in the can or cart after each collection, is also available to multifamily customers.

MATERIALS: Leaves, grass clippings, prunings 4 inches or less in diameter. Starting in April 2009, all food waste and food soiled paper are allowed in the cart. It is illegal to put leaves, grass clippings and prunings in the curbside garbage can.

Fees: Monthly Variable Can/Cart Prices: 13 gal = \$5.15, 32 gal = \$7.75, 96 gal = \$9.90

Basics of Self Haul Program

SERVICE: Two city owned recycle and disposal stations accept organics during regular operating hours. Yard waste must be separated and cannot be disposed of as garbage.

FEES: **Cars:** \$20.00 per trip (compared to \$30.00 per trip for garbage).
Trucks: \$110.00 per ton (compared to \$145.00 per ton for garbage).

Basics of Commercial Program

SERVICE: Seattle has contracts with Waste Management and Cleanscapes for garbage and organics service. Customers can sign up with their contract garbage hauler for curbside can/cart organics service. If they want on-site cart or dumpster service, they can use Cleanscapes which has a contract with Seattle for this service³. In addition, Seattle commercial customers can choose organics service through a hauler outside of the city contracts. This is referred to as “non-contract” organics service.

MATERIALS: All food scraps (including meat, fish, dairy and produce), food soiled paper, waxed cardboard, and yard debris.

FEES: Approximately 32% below garbage prices. (Non-contract prices vary.)

³ “Curbside service” requires the customer to bring their container to the curb. “On-site service” does not require the customer to move their container for collection.

CITY OF SEATTLE ORGANICS PROGRAM

		TONNAGE DATA									ACCOUNT SIGN-UP DATA						
Year	Month	SELF HAUL ¹			CURBSIDE ³				COMMERCIAL ⁴			RESIDENTIAL		COMMERCIAL			
		North ⁵	South	Total	WM	USD	CS	Total	Contract	Non Contract	Total	Accounts	Lbs/Acct	Contract	NonContract	Total	
2013	1	150	121	271	2,419		2,035	4,454	175	3,368	3,543	145,857	61	834	1,531	2,365	
2013	2	162	155	317	2,188		1,754	3,942	156	3,368	3,524	145,929	54	834	1,531	2,365	
2013	3	218	240	458	3,373		2,522	5,895	154	3,368	3,522	146,037	81	840	1,531	2,371	
2013	4	264	206	471	4,912		3,382	8,294	168	3,565	3,733	146,209	113	852	1,557	2,409	
2013	5	329	289	618	5,937		4,131	10,068	179	3,565	3,744	146,396	138	876	1,557	2,433	
2013	6	360	401	761	5,056		3,468	8,523	178	3,565	3,744	146,548	116	876	1,557	2,433	
2013	7	328	372	700	4,542		3,216	7,757	189	3,785	3,975	146,623	106	878	1,624	2,502	
2013	8	307	293	600	3,405		2,524	5,929	193	3,785	3,979	146,681	81	876	1,624	2,500	
2013	9	270	272	542	3,543		2,613	6,157	214	3,785	4,000	146,768	84	883	1,624	2,507	
2013	10	304	290	594	4,167		3,218	7,384	184	3,941	4,125	146,803	101	870	1,662	2,532	
2013	11	367	295	662	5,040		4,490	9,531	164	3,941	4,106	146,758	130	870	1,662	2,532	
2013	12	160	136	296	2,379		2,078	4,457	146	3,941	4,087	146,770	61	876	1,662	2,538	
2014	1	100	186	286	2,657		2,237	4,894	152	3,688	3,840	146,741	67	865	1,674	2,539	
2014	2		156	156	1,715		1,439	3,154	131	3,688	3,819	146,763	43	866	1,674	2,540	
2014	3		271	271	3,334		2,483	5,818	139	3,688	3,827	146,856	79	861	1,674	2,535	
2014	4		396	396	5,123		3,552	8,675	133	3,994	4,127	147,021	118	874	1,707	2,581	
2014	5		458	458	6,003		4,115	10,118	147	3,994	4,141	147,235	137	871	1,707	2,578	
2014	6		510	510	5,004		3,452	8,457	176	3,994	4,170	147,405	115	864	1,707	2,571	
2014	7		451	451	4,103		2,930	7,033	161	4,168	4,328	147,507	95	864	1,734	2,598	
2014	8		381	381	3,412		2,401	5,813	168	4,168	4,335	147,570	79	857	1,734	2,591	
2014	9		359	359	3,670		2,630	6,300	178	4,168	4,346	147,706	85	853	1,734	2,587	
2014	10		355	355	4,292		3,236	7,528	151	4,229	4,380	147,649	102	864	1,853	2,717	
2014	11		312	312	4,284		3,593	7,877	162	4,229	4,391	147,646	107	865	1,853	2,718	
2014	12		264	264	3,679		3,243	6,922	178	4,229	4,406	147,966	94	1,089	1,853	2,942	
Total 2014		100	4,099	4,199	47,276		35,312	82,588	1,875	48,237	50,111	2014 Avg	93		2014 Avg	2,625	
Total 2013		3,219	3,071	6,290	46,960		35,430	82,390	2,101	43,980	46,081	2013 Avg	94		2013 Avg	2,457	
Total 2012		3,245	3,348	6,593	47,599		36,067	83,666	1,977	40,637	42,614	2012 Avg	97		2012 Avg	2,242	
Total 2011		3,449	3,345	6,794	45,777		34,036	79,813	2,686	38,101	40,787	2011 Avg	94		2011 Avg	2,047	
Total 2010		3,715	3,966	7,682	46,564		33,388	79,952	2,113	35,139	37,252	2010 Avg	95		2010 Avg	1,648	
Total 2009		4,775	5,374	10,149	42,648	4,455	27,127	74,230	1,763	29,961	31,724	2009 Avg	90		2009 Avg	1,243	
Total 2008		5,530	6,363	12,667	28,348	28,016		56,364	2,260	24,902	27,162	2008 Avg	87		2008 Avg	930	
Total 2007		6,731	7,516	14,247	27,447	27,126		54,573	5,023	9,748	14,771	2007 Avg	87				
Total 2006:		6,953	7,323	14,276	26,125	25,414		51,539	7,123	280	7,403	2006 Avg	85				
Total 2005:		6,598	7,328	13,925	22,009	20,595		42,603				2005 Avg	74				
Total 2004:		7,729	7,177	14,905	19,670	18,815		38,485				2004 Avg	69				
Total 2003:		7,559	6,597	14,156	17,094	16,830		33,923				2003 Avg	62				
Total 2002:		7,844	6,522	14,366	17,086	17,417		34,503				2002 Avg	70				
Total 2001:		8,279	6,755	15,034	18,412	18,578		36,990				2001 Avg	NA				
Total 2000:		8,280	5,752	14,031	18,240	15,797		34,037				2000 Avg	66				
Total 1999:		8,186	5,506	13,692	28,080	11,657		39,737				1999 Avg	78				
Total 1998:		8,122	4,912	13,034	28,286	12,260		40,546				1998 Avg	79				
Total 1997:		8,574	5,563	14,137	30,017	13,113		43,130				1997 Avg	84				
Total 1996:		7,341	4,186	11,527	27,491	11,842		39,333				1996 Avg	76				
Total 1995:		7,567	4,596	12,163	29,122	11,622		40,745				1995 Avg	75				
Total 1994:		7,045	4,952	11,997	26,099	10,974		37,073				1994 Avg	72				
Total 1993 ² :		8,019	5,423	13,442	30,113	12,582		42,695				1993 Avg	78				
Total 1992:		6,430	5,124	11,553	24,547	10,243		34,790				1992 Avg	61				
Total 1991:		8,814	5,908	14,722	28,103	11,100		39,203									
Total 1990:		7,339	5,625	12,964	25,936	10,845		36,780									
Total 1989:		6,495	4,753	11,249	22,812	8,845		31,657									

1. Beginning Feb 2014 car trips are weighed. Prior to this, car weights were calculated at 258lbs based composition study results.

2. Note that the fairly large increase in tonnage from 1992 to 1993 is due to two factors:

a) 1992 tonnage was the lowest since 1989 due to the drought and lawn watering ban which extended from June 1 - November 2, 1992.

b) 1993 tonnage was high due to abundant precipitation in the spring and summer months.

3. Some commercial curbside can/cart organics are included in residential curbside tons. New 10-yr contracts began 3/30/2009. CS (Cleanscapes) and WM (Waste Management) are the contracted haulers.

4. This table does not include some commercial non-compost food waste collection such as fats, oils and grease. This additional food waste is captured in our annual recycle survey and in our calculation of Seattle's overall recycling rate. Some Non Contract tons are reported quarterly.

5. North Recycle & Disposal Station closed on Jan 20, 2014 for a rebuild.

City of Seattle Organics Customers by Customer Category

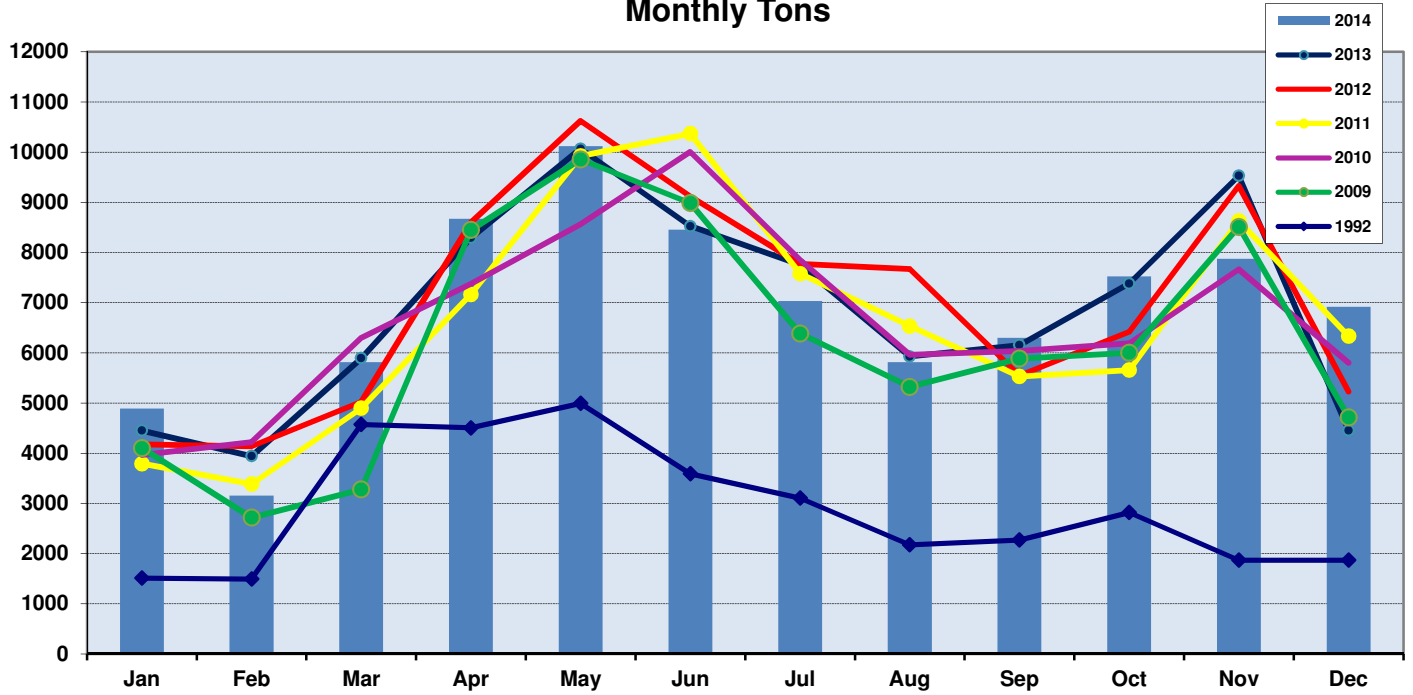
Date	Total Premises ¹		# of Premise Subscribers		Subscription Rate		Can Prems - % Organics Subscriptions by Type						Dumpster Prems - % Organics Subscriptions by Type					
	Can Garb Prems ²	Dumpster Garb Prems ³	Can Prems Signed Up	Multifamily Dumpster Prems Signed Up	Total Can Prem Sign Ups	Total Dumpster Prem Sign Ups	13 Gal	32 Gal	90 Gal	Curb Liner	Onsite Liner	Exempt	Not Signed Up	Curb No Liner	Curb Liner	On Site Liner	Exempt	Not Signed Up
Jan-13	147,590	5,205	140,869	4,988	95.4%	95.8%	21.8%	8.9%	64.9%	0.2%	0.03%	4.4%	0.2%	39.4%	42.6%	16.2%	2.2%	2.0%
Feb-13	147,616	5,208	140,938	4,991	95.5%	95.8%	21.8%	9.0%	64.7%	0.2%	0.03%	4.4%	0.2%	39.2%	42.6%	16.4%	2.3%	1.8%
Mar-13	147,694	5,203	141,048	4,989	95.5%	95.9%	21.8%	9.1%	64.7%	0.2%	0.03%	4.3%	0.2%	38.9%	42.9%	16.4%	2.3%	1.8%
Apr-13	147,792	5,204	141,218	4,991	95.6%	95.9%	21.8%	9.2%	64.7%	0.2%	0.03%	4.3%	0.1%	38.4%	43.3%	16.6%	2.3%	1.8%
May-13	147,931	5,206	141,402	4,994	95.6%	95.9%	21.7%	9.4%	64.7%	0.2%	0.03%	4.3%	0.1%	38.0%	43.4%	16.8%	2.3%	1.7%
Jun-13	148,027	5,201	141,563	4,985	95.6%	95.8%	21.6%	9.4%	64.8%	0.2%	0.03%	4.3%	0.1%	37.3%	44.1%	16.8%	2.4%	1.8%
Jul-13	148,035	5,202	141,632	4,991	95.7%	95.9%	21.5%	9.5%	64.8%	0.2%	0.03%	4.2%	0.1%	36.8%	44.4%	16.9%	2.3%	1.7%
Aug-13	148,075	5,205	141,685	4,996	95.7%	96.0%	21.5%	9.6%	64.7%	0.2%	0.03%	4.2%	0.1%	36.4%	44.8%	16.9%	2.3%	1.7%
Sep-13	148,105	5,212	141,766	5,002	95.7%	96.0%	21.5%	9.7%	64.6%	0.2%	0.03%	4.2%	0.1%	36.1%	45.1%	16.9%	2.4%	1.7%
Oct-13	148,106	5,214	141,804	4,999	95.7%	95.9%	21.6%	9.8%	64.5%	0.2%	0.03%	4.2%	0.1%	35.7%	45.4%	16.9%	2.4%	1.7%
Nov-13	148,053	5,219	141,754	5,004	95.7%	95.9%	21.5%	9.8%	64.5%	0.2%	0.03%	4.2%	0.1%	35.3%	45.7%	17.0%	2.4%	1.7%
Dec-13	148,061	5,217	141,767	5,003	95.7%	95.9%	21.6%	9.9%	64.4%	0.2%	0.03%	4.2%	0.1%	35.0%	45.9%	17.1%	2.6%	1.5%
Jan-14	148,028	5,213	141,740	5,001	95.8%	95.9%	21.6%	10.0%	64.3%	0.2%	0.03%	4.2%	0.1%	34.6%	46.3%	17.2%	2.6%	1.5%
Feb-14	148,040	5,211	141,766	4,997	95.8%	95.9%	21.7%	10.0%	64.1%	0.2%	0.03%	4.2%	0.1%	34.3%	46.4%	17.2%	2.6%	1.6%
Mar-14	148,117	5,209	141,860	4,996	95.8%	95.9%	21.7%	10.1%	64.1%	0.2%	0.03%	4.2%	0.1%	34.2%	46.6%	17.3%	2.6%	1.5%
Apr-14	148,246	5,213	142,017	5,004	95.8%	96.0%	21.6%	10.2%	64.1%	0.2%	0.03%	4.2%	0.0%	34.0%	46.8%	17.3%	2.6%	1.4%
May-14	148,395	5,222	142,223	5,012	95.8%	96.0%	21.5%	10.3%	64.2%	0.2%	0.03%	4.1%	0.0%	33.8%	47.0%	17.3%	2.6%	1.4%
Jun-14	148,498	5,225	142,389	5,016	95.9%	96.0%	21.4%	10.4%	64.3%	0.2%	0.04%	4.1%	0.0%	33.6%	47.3%	17.3%	2.6%	1.4%
Jul-14	148,548	5,224	142,492	5,015	95.9%	96.0%	21.3%	10.5%	64.3%	0.2%	0.04%	4.0%	0.0%	33.2%	47.5%	17.3%	2.6%	1.4%
Aug-14	148,577	5,224	142,554	5,016	95.9%	96.0%	21.3%	10.6%	64.2%	0.2%	0.04%	4.0%	0.0%	33.0%	47.6%	17.4%	2.6%	1.4%
Sep-14	148,646	5,248	142,665	5,041	96.0%	96.1%	21.3%	10.7%	64.1%	0.2%	0.04%	4.0%	0.0%	32.9%	47.7%	17.5%	2.6%	1.4%
Oct-14	148,572	5,206	142,645	5,004	96.0%	96.1%	21.3%	10.8%	64.0%	0.2%	0.04%	4.0%	0.0%	32.3%	48.2%	17.7%	2.7%	1.2%
Nov-14	148,546	5,205	142,644	5,002	96.0%	96.1%	21.3%	10.8%	64.0%	0.2%	0.04%	3.9%	0.0%	32.2%	48.2%	17.7%	2.7%	1.2%
Dec-14	148,609	5,203	142,953	5,013	96.2%	96.3%	21.4%	11.0%	63.8%	0.2%	0.04%	3.8%	0.0%	32.1%	48.6%	17.8%	2.6%	1.1%
2014 Avg	148,402	5,217	142,329	5,010	95.9%	96.0%	21.5%	10.4%	64.1%	0.2%	0.04%	4.1%	0.0%	33.3%	47.4%	17.4%	2.6%	1.4%
2013 Avg	147,924	5,208	141,454	4,994	95.6%	95.9%	21.6%	9.4%	64.7%	0.2%	0.03%	4.3%	0.1%	37.2%	44.2%	16.7%	2.4%	1.7%
2012 Avg	147,191	5,214	139,501	4,936	94.8%	94.7%	21.3%	8.3%	65.3%	0.1%	0.02%	4.4%	0.8%	39.9%	41.4%	15.7%	2.3%	3.1%
2011 Avg	147,037	5,299	138,763	2,934	94.4%	55.4%	21.0%	7.2%	66.0%	0.1%	0.01%	4.6%	1.0%	40.0%	11.6%	4.9%	0.8%	43.8%
2010 Avg	146,677	5,369	137,139	2,349	93.5%	43.8%	20.5%	5.9%	66.9%	0.2%	0.03%	4.8%	2.3%	41.1%	1.9%	1.3%	0.3%	55.7%
2009 Avg	145,826	5,421	130,844	2,123	89.7%	39.2%	16.9%	1.0%	72.4%	0.2%	0.03%	1.9%	7.9%	40.6%	0.0%	0.5%	0.1%	59.0%

1. A Premise is essentially a structure - so a single family house would count as one premise, a tri-plex with 3 housing units counts as one premise and an apartment building with 25 housing units would also count as one premise

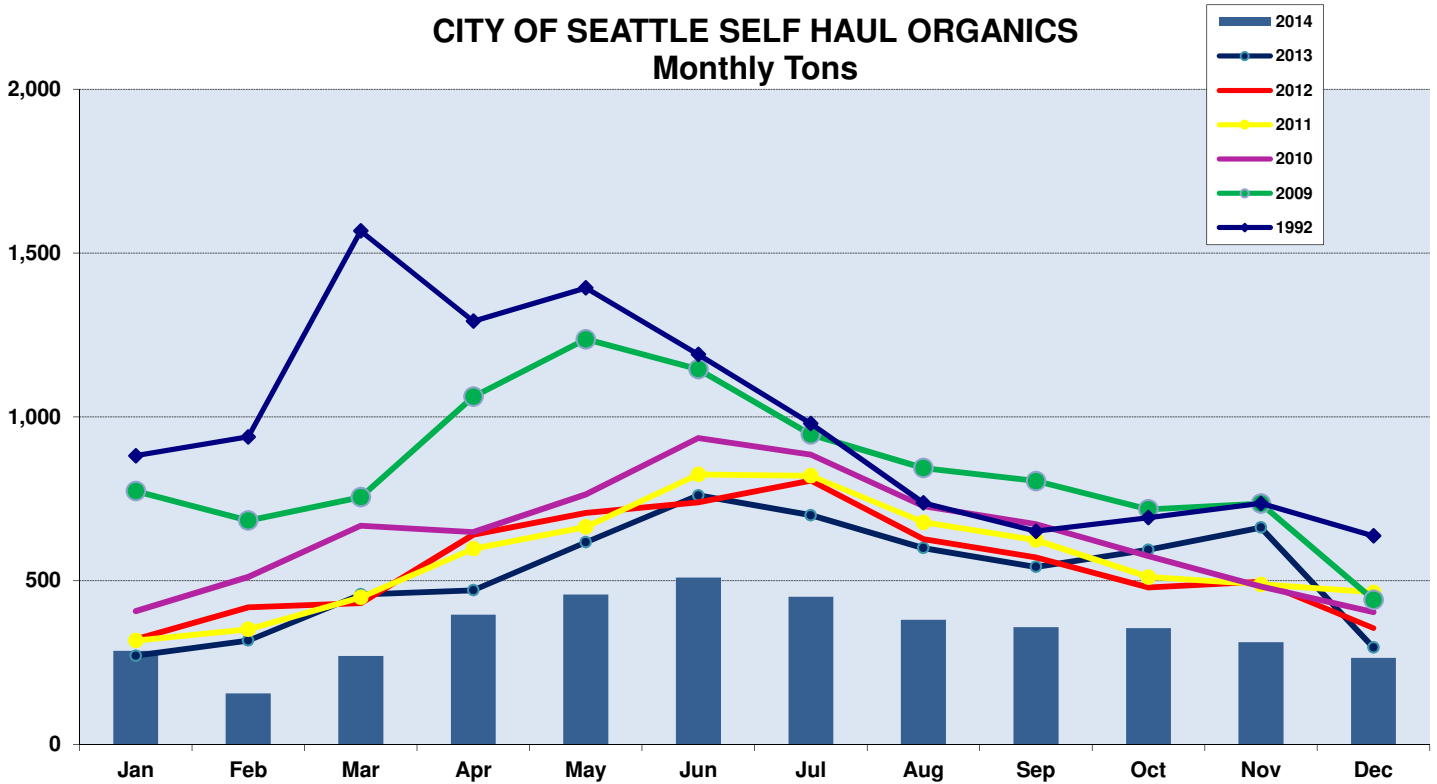
2. Can Garb Prems refers to customers that subscribe to can garbage service.

3. Dumpster Garb Prems refers to customers that subscribe to dumpster garbage service. Dumpster Prems are typically Apartment buildings.

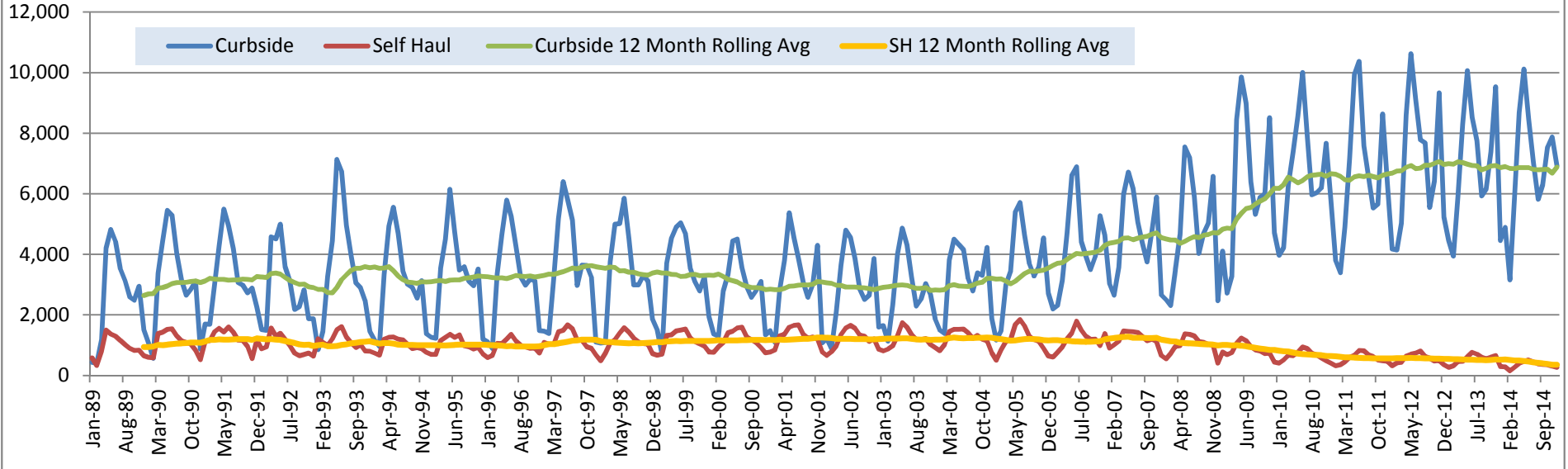
CITY OF SEATTLE CURBSIDE ORGANICS Monthly Tons



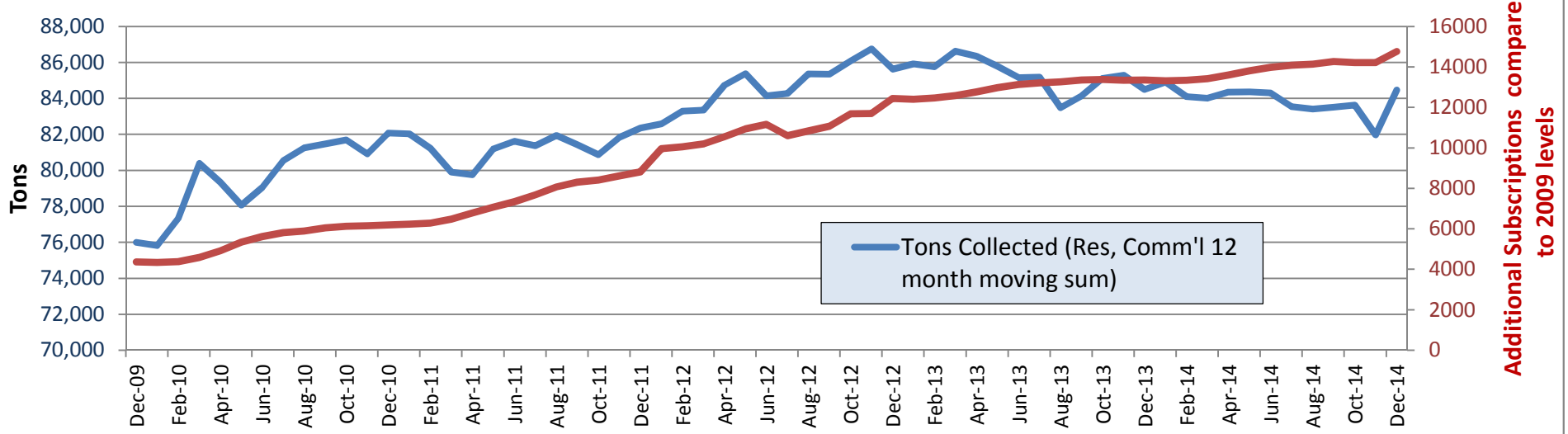
CITY OF SEATTLE SELF HAUL ORGANICS Monthly Tons



CITY OF SEATTLE RESIDENTIAL CURBSIDE AND SELF HAUL ORGANICS TONS



CITY OF SEATTLE TOTAL RESIDENTIAL ORGANICS TONS COLLECTED COMPARED TO ADDITIONAL SUBSCRIPTION LEVELS SINCE 2009 ¹

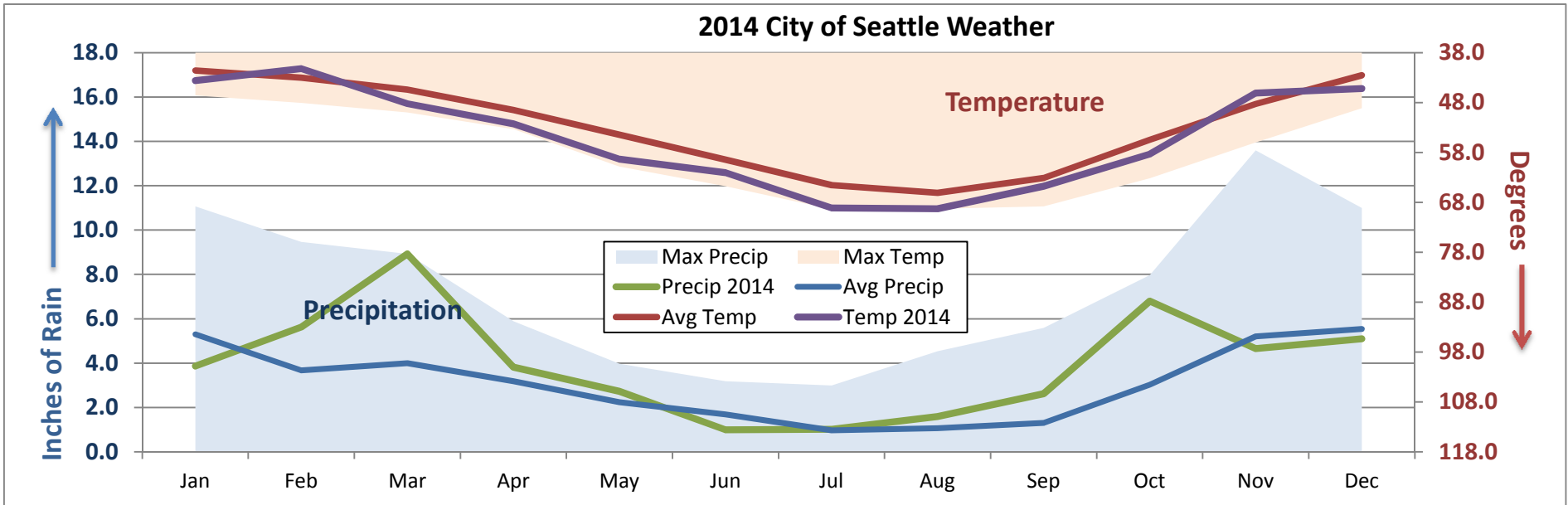


1. In April 2009 subscription to curbside organics service became mandatory for single family residents. In September 2011 mandatory subscription to curbside organics service expanded to multi-plex and multi-family customers. on organics tonnage.

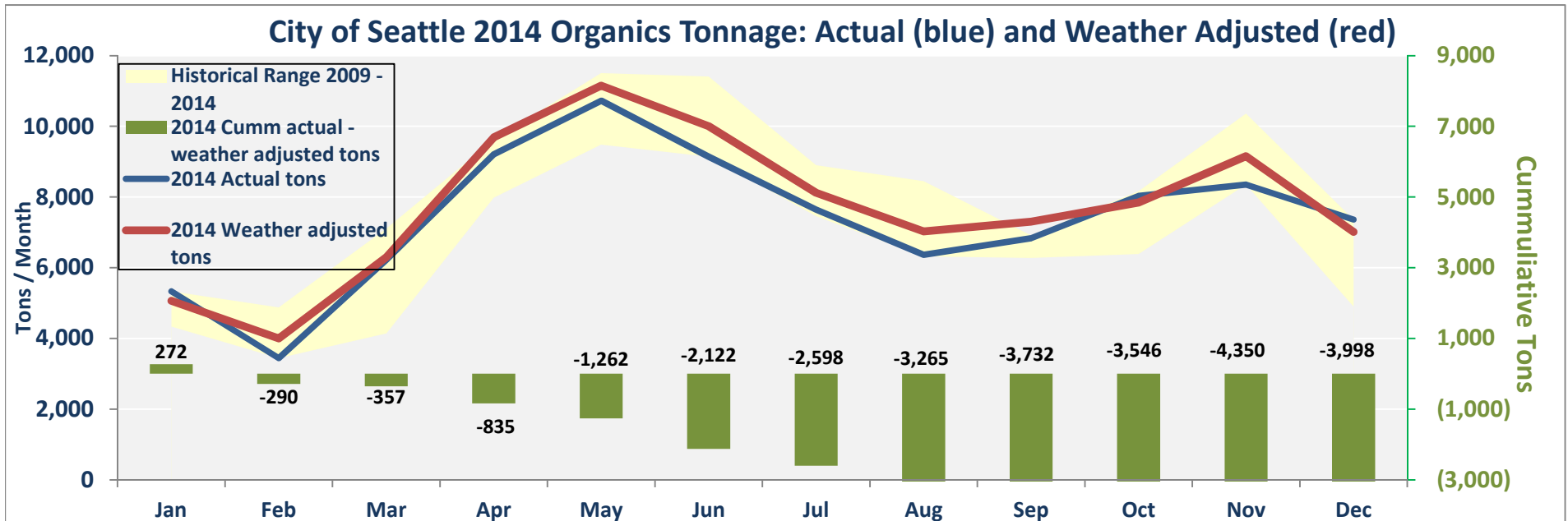
2. Drier and warmer than average weather in 2013 & 2014 contributed to a drop in Organics tonnage. (see weather charts for more details)

Weather Impacts on Organics Tonnage

2014 City of Seattle Weather



Although we have had overall greater than average precipitation this year, it has not occurred during the growing season. Warmer, drier weather during the growing season has had a negative effect on tonnage as can be seen by the weather adjusted tons below.



This chart shows what the estimated Organics tonnage would be if we had average weather (red line) in 2014 compared to the actual 2014 tonnage (blue line).

The yellow area shows the minimum and maximum range of tonnage since 2009.

The cumulative difference in weather adjusted tons compared to actual tons from Jan - Dec 2014 is negative 3,998 tons (green bars). This means an estimated additional 3,998 tons of Organics would have been collected in Seattle if we would have had average weather in 2014.