

YARD WASTE REPORT

DECEMBER 1998

Seattle Public Utilities, Resource Planning Division, Forecasting & Evaluation Section

Report Date: January 28, 1999

Phone: (206)684-4143

Tonnage

| | | |
|-----------------------------------|-------------|-----------------------------------|
| Total Yard Waste in December: | 2,589 Tons | 45% higher vs. same period in '97 |
| Cumulative Total Yard Waste: | 53,580 Tons | 6% lower vs. same period in '97 |
| Curbside Yard Waste in December: | 1,865 Tons | 68% higher vs. same period in '97 |
| Cumulative Curbside Yard Waste: | 40,546 Tons | 6% lower vs. same period in '97 |
| Self Haul Yard Waste in December: | 724 Tons | 7% higher vs. same period in '97 |
| Cumulative Self Haul Yard Waste: | 13,034 Tons | 8% lower vs. same period in '97 |

Selected Statistics

Number of Accounts² Subscribed to Curbside Yard Waste Program as of December 1998:
85,061 (58% of 147,490 total accounts).

Approximate Pounds per Subscribed Account for Curbside Yard Waste Program

| | |
|--------------------------|------------------------------------|
| January - December 1992: | 61 pounds per month ^{1,3} |
| January - December 1993: | 78 pounds per month |
| January - December 1994: | 72 pounds per month |
| January - December 1995: | 75 pounds per month |
| January - December 1996: | 76 pounds per month |
| January - December 1997: | 84 pounds per month |
| January - December 1998: | 79 pounds per month |

Basics of Curbside Yard Waste Program

SERVICE: South of Yesler: Biweekly pickup March through November and monthly pickup December through February
North of Yesler: Weekly pickup March through October and monthly pickup November through February with two collections in November

MATERIALS: Leaves, grass clippings, prunings (must be 4 inches or less in diameter)
It is illegal to put yard waste in the curbside garbage can.

SERVICE FEE: \$4.25 per month. Maximum of 20 sixty pound bundles each month divided equally over the number of collections in a particular month. (For example, if there are two collections a month you can put out 10 bundles each collection, if there are four collections per month you can only put out 5 bundles per collection, etc.)

Basics of Self Haul Transfer Station Program

SERVICE: Two City-owned transfer stations accept yard waste during the regular operating hours of the stations. Yard waste must be separated and can not be disposed of as garbage.

SERVICE FEES: Cars: \$6.50 per trip (compared to \$8.50 per trip for garbage).
Trucks: \$68.70 per ton (compared to \$93.65 per ton for garbage).

- 1) Note that the fairly large increase in tonnage from 1992 to 1993 is due to two factors a) 1992 tonnage was the lowest since 1989 due to the drought and lawn watering ban, and b) 1993 tonnage was the highest ever due to abundant precipitation in the spring and summer months.
- 2) An "account" refers to billing for combined water, sewer and garbage. An apartment building with 5 or 500 units would show up as one account. Some accounts may have one or more residence on them.
- 3) June 1, 1992 - November 2, 1992 the City of Seattle had a lawn watering ban which dramatically affected yard waste tonnage.

CITY OF SEATTLE YARD WASTE PROGRAM

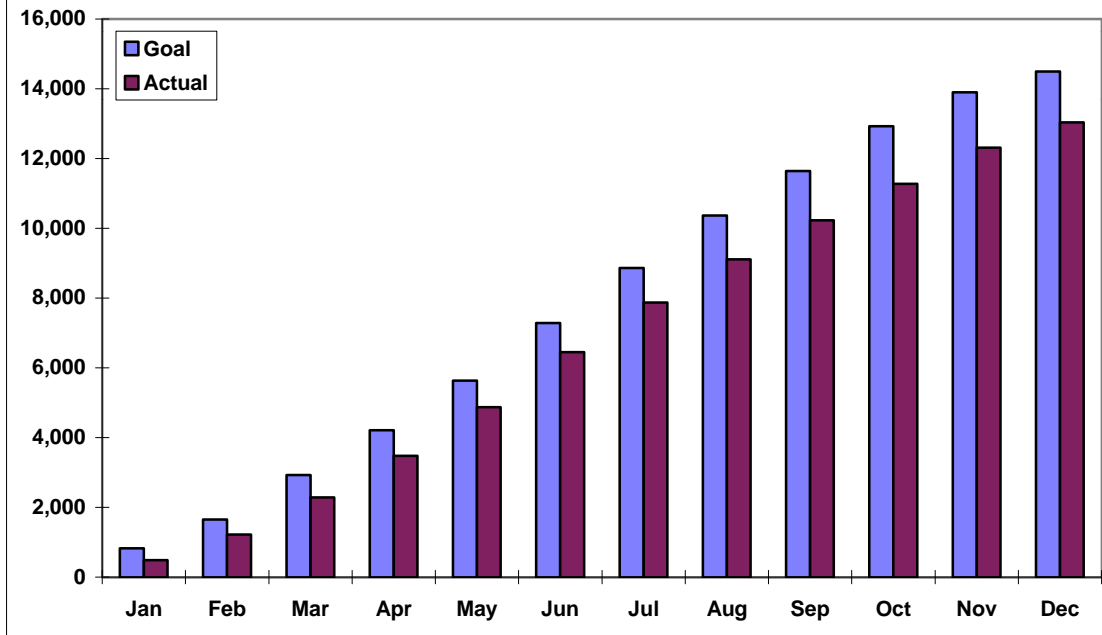
Self Haul & Curbside Collection Tons (1997 - 1998)

| Year | Month | Self Haul North* | Self Haul South* | Curbside North | Curbside South | Self Haul Total* | Curbside Total | Total Yard Waste |
|-------------|--------------|-------------------------|-------------------------|-----------------------|-----------------------|-------------------------|-----------------------|-------------------------|
| 1997 | 1 | 626 | 466 | 991 | 471 | 1,092 | 1,461 | 2,553 |
| 1997 | 2 | 646 | 385 | 899 | 486 | 1,031 | 1,385 | 2,415 |
| 1997 | 3 | 624 | 405 | 2,393 | 790 | 1,029 | 3,184 | 4,213 |
| 1997 | 4 | 887 | 555 | 3,598 | 1,581 | 1,442 | 5,179 | 6,621 |
| 1997 | 5 | 883 | 606 | 4,434 | 1,968 | 1,489 | 6,401 | 7,890 |
| 1997 | 6 | 973 | 696 | 4,008 | 1,787 | 1,670 | 5,795 | 7,465 |
| 1997 | 7 | 907 | 635 | 3,518 | 1,606 | 1,542 | 5,124 | 6,666 |
| 1997 | 8 | 687 | 484 | 2,038 | 934 | 1,171 | 2,972 | 4,143 |
| 1997 | 9 | 690 | 465 | 2,530 | 1,109 | 1,155 | 3,639 | 4,794 |
| 1997 | 10 | 601 | 346 | 2,540 | 1,098 | 946 | 3,638 | 4,585 |
| 1997 | 11 | 597 | 296 | 2,227 | 1,015 | 893 | 3,243 | 4,136 |
| 1997 | 12 | 455 | 224 | 840 | 268 | 679 | 1,108 | 1,787 |
| 1998 | 1 | 331 | 152 | 777 | 292 | 483 | 1,069 | 1,552 |
| 1998 | 2 | 480 | 256 | 733 | 355 | 736 | 1,087 | 1,824 |
| 1998 | 3 | 671 | 398 | 2,707 | 1,043 | 1,069 | 3,750 | 4,819 |
| 1998 | 4 | 712 | 475 | 3,473 | 1,521 | 1,187 | 4,994 | 6,181 |
| 1998 | 5 | 826 | 573 | 3,422 | 1,595 | 1,400 | 5,016 | 6,416 |
| 1998 | 6 | 980 | 593 | 3,966 | 1,885 | 1,573 | 5,851 | 7,424 |
| 1998 | 7 | 884 | 543 | 3,123 | 1,393 | 1,428 | 4,516 | 5,943 |
| 1998 | 8 | 749 | 488 | 2,109 | 882 | 1,237 | 2,991 | 4,227 |
| 1998 | 9 | 679 | 436 | 2,066 | 921 | 1,115 | 2,987 | 4,103 |
| 1998 | 10 | 630 | 421 | 2,390 | 907 | 1,051 | 3,298 | 4,348 |
| 1998 | 11 | 689 | 343 | 2,049 | 1,073 | 1,032 | 3,122 | 4,154 |
| 1998 | 12 | 491 | 233 | 1,472 | 393 | 724 | 1,865 | 2,589 |
| Total 1998: | | 8,122 | 4,912 | 28,286 | 12,260 | 13,034 | 40,546 | 53,580 |
| Total 1997: | | 8,574 | 5,563 | 30,017 | 13,113 | 14,137 | 43,130 | 57,267 |
| Total 1996: | | 7,341 | 4,186 | 27,491 | 11,842 | 11,527 | 39,333 | 50,860 |
| Total 1995: | | 7,567 | 4,596 | 29,122 | 11,622 | 12,163 | 40,745 | 52,907 |
| Total 1994: | | 7,045 | 4,952 | 26,099 | 10,974 | 11,997 | 37,073 | 49,070 |
| Total 1993: | | 8,019 | 5,423 | 30,113 | 12,582 | 13,442 | 42,695 | 56,137 |
| Total 1992: | | 6,430 | 5,124 | 24,547 | 10,243 | 11,553 | 34,790 | 46,343 |
| Total 1991: | | 8,814 | 5,908 | 28,103 | 11,100 | 14,722 | 39,203 | 53,924 |
| Total 1990: | | 7,339 | 5,625 | 25,936 | 10,845 | 12,964 | 36,780 | 49,744 |
| Total 1989: | | 6,495 | 4,753 | 22,812 | 8,845 | 11,249 | 31,657 | 42,905 |

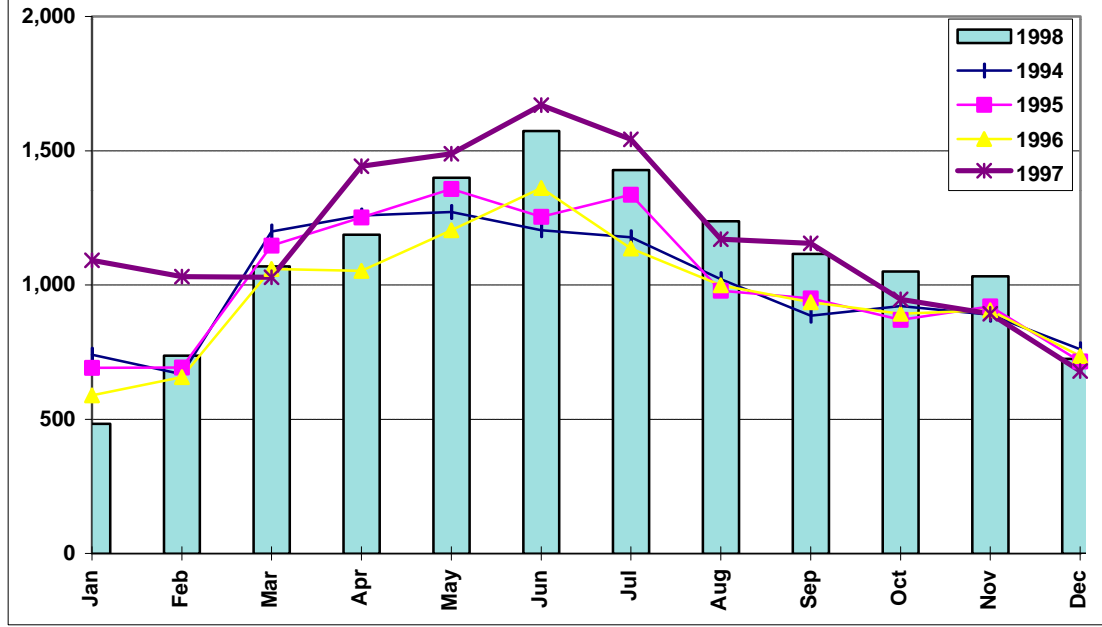
* Self haul includes cars and trucks. Cars are not weighed at the stations so car tons are estimated based on the number of cars.

The average weight of cars bringing yard waste is 258 pounds per car based on sampling conducted in 1995.

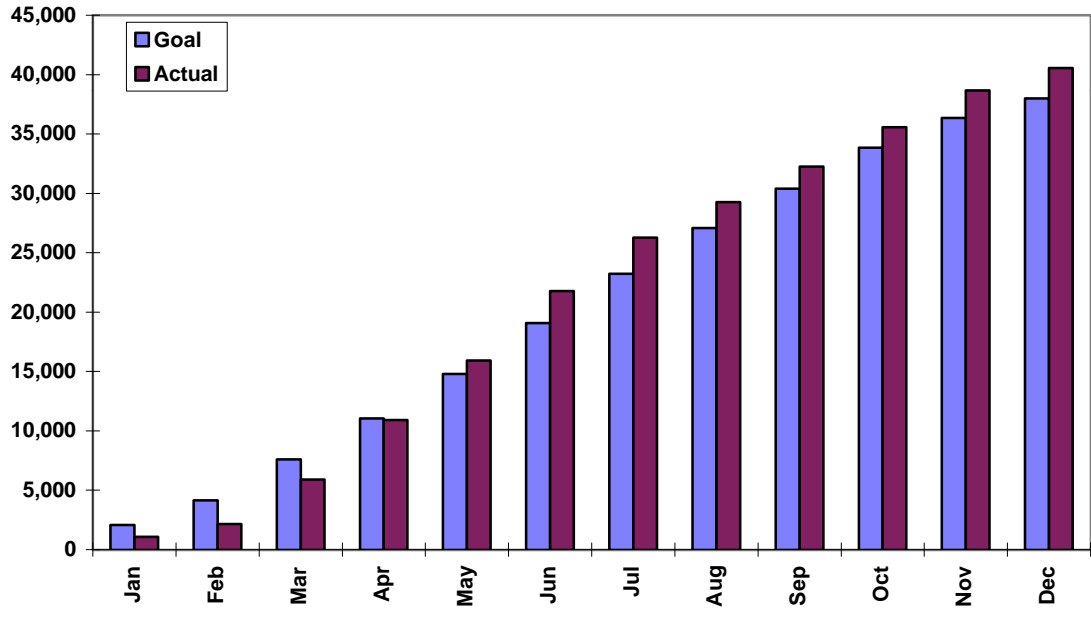
SELF HAUL YARD WASTE Cumulative Tons 1998



SELF HAUL YARD WASTE Monthly Tons



CURBSIDE YARD WASTE Cumulative Tons 1998



CURBSIDE YARD WASTE Monthly Tons

