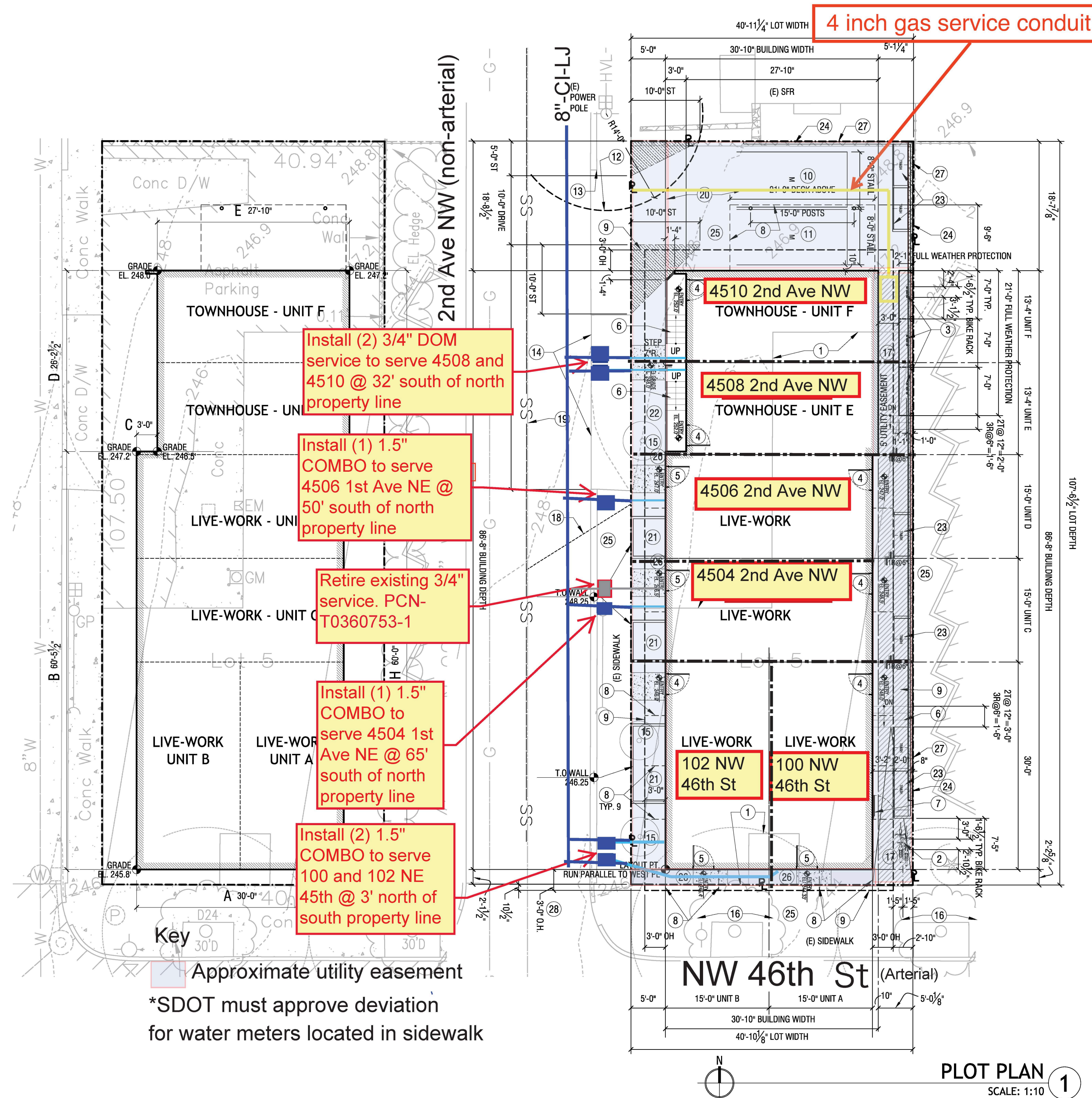


WATER SERVICES SITE PLAN



Required Elements on the Water Services Site Plan

The water services site plan for your project must:

- Be drawn to scale (minimum 1 inch = 10 feet).
 - Call out existing water meter location, size, type and proposal for each (reuse or retire).
 - Call out proposed water meter location, size, type, and dimension from nearest side lot line. (Locations must be in the right of way and not in a parking area or driveway).
 - Show abutting water main location, size and material (reference project WAC for information).
 - Show underground utilities.
 - Show right of way improvements, including existing and proposed curbs and sidewalks, and vertical obstructions including poles, signs, trees and fire hydrants.
 - Show private property lines and easements.
 - Clearly show lot lines and if applicable, all unit lot lines.
 - Show building footprint(s) with legal address(es).
 - Provide the name of each street abutting the site and indicate whether it's an arterial or non-arterial.
 - Meet standard plan 314b for clearances.
- For new 4-inch and larger services, or as required:**
- Include a profile (cross-section) showing the depth of each existing and proposed utility.
 - Include a stamp and signature by a licensed engineer or surveyor in Washington State.

Resources for Completing the Water Services Site Plan

SPU Water and Sewer Map:

https://gisrevprxy.seattle.gov/wab_ext/DSOResearch Ext/

SDOT Street Classification Map:

<http://www.seattle.gov/transportation/permits-and-services/interactive-maps>

Seattle Services Portal:

<https://cosaccela.seattle.gov/portal/welcome.aspx>

Standard Plan 314b:

<http://www.seattle.gov/utilities/construction-resources/design-standards/standard-specs-and-plans>