

Transportation Investments by New Arena at Seattle Center and North Downtown Mobility Action Program (NODO MAP)

SDOT Vision, Mission, and Core Values

Vision: Seattle is a thriving equitable community powered by dependable transportation

Mission: to deliver a transportation system that provides safe and affordable access to places and opportunities

Committed to **6 core values:**

- Equity
- Safety
- Mobility
- Sustainability
- Livability
- Excellence

Presentation Overview

1. Purpose: provide status update of arena and NODO-related transportation projects
2. New Arena at Seattle Center:
 - a. 1st Ave N and Queen Anne Ave N
 - b. 2nd Ave / Denny Way intersection
3. 1st Ave / Denny Way to 2nd Ave / Broad St PBL connection
4. Seattle Center to Waterfront NGW and Thomas St Overpass
5. Questions / comments

NODO MAP 10-Year Investment/Priority Projects



NODO MAP 10-YEAR INVESTMENTS

- A** 1st Ave N and Queen Anne Ave N Complete Streets (e.g., transit-only lanes, transit queue jump, signal upgrades)
- B** 1st Ave and Broad St Complete Street Extension (e.g., protected bike lanes, pedestrian crossing, signal upgrades)
- C-west** Thomas Street Greenway: Seattle Center to Waterfront Greenway
- C-east** Thomas Street Greenway: Protected Intersection at Dexter Ave N and Thomas St
- D** Pedestrian Improvements in Belltown
- E** Monorail Improvements Seed-Funding
- F** SR 99 to Waterfront Access and Mobility
- G** Denny Way Corridor East Operational Improvements
- H** Harrison St Corridor Operational Improvements

- Area-wide project (not mapped)*
- I** Neighborhood Programmatic Improvements (e.g., pedestrian improvements, wayfinding, striping, pedestrian-scale lighting, education programs)

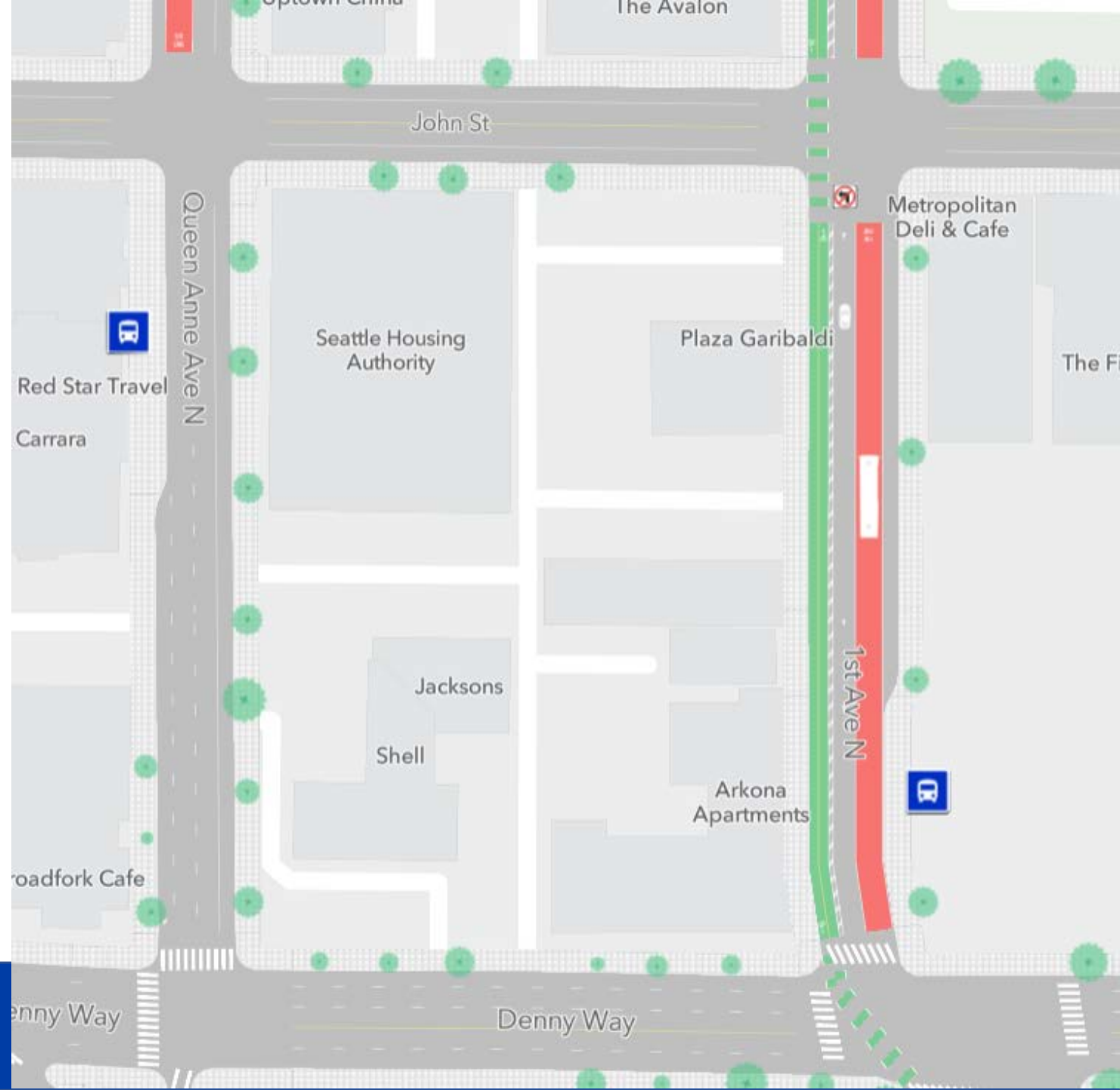
RELATED PROJECTS/PROGRAMS

- █ Thomas Street Redefined (5th Ave N to Dexter Ave N)

1st Ave N and Queen Anne Ave N

- Two-way protected bike lane on the west side of 1st Ave N from Denny Way to Thomas St

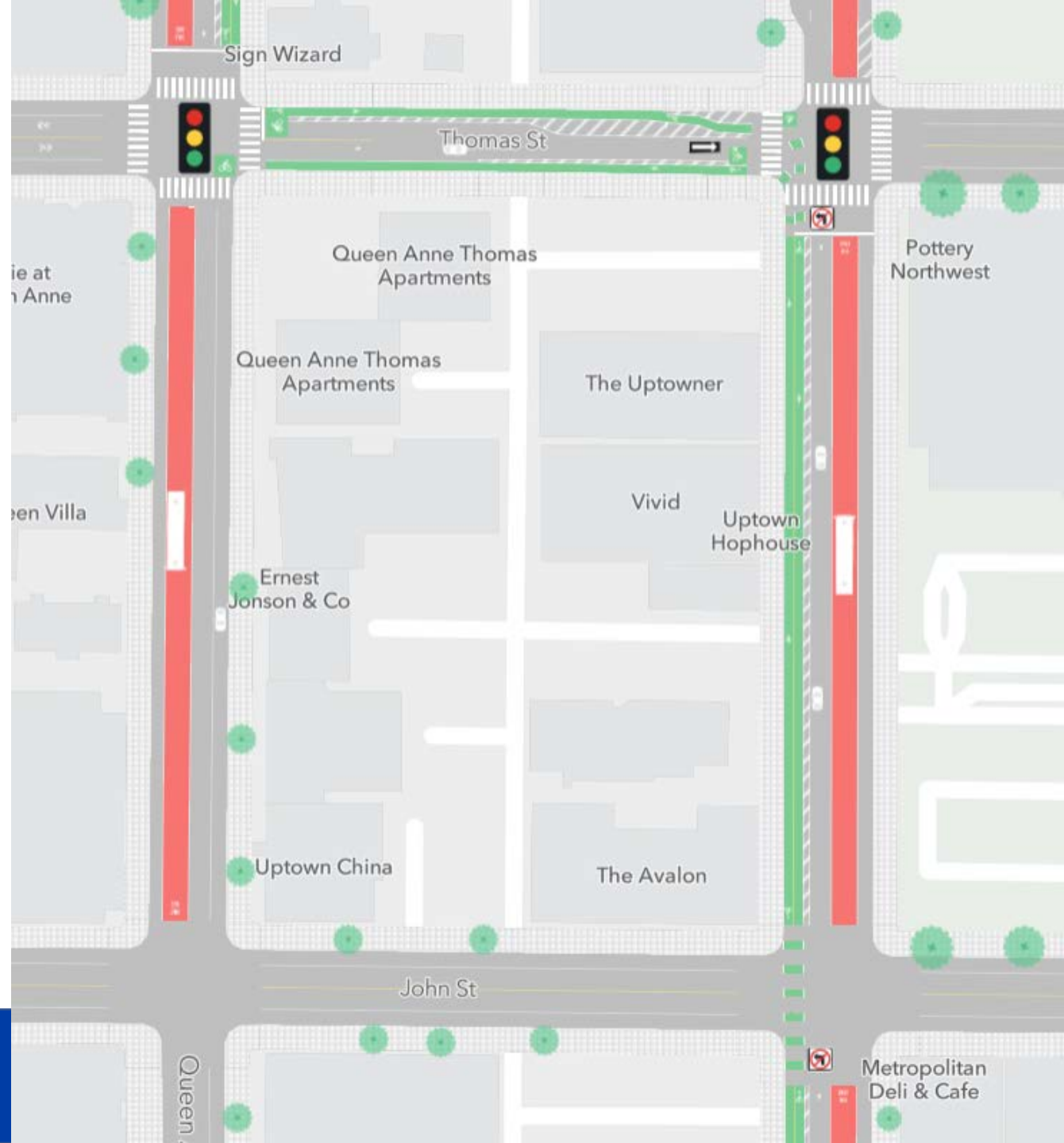
(DRAFT, FOR DISCUSSION PURPOSES ONLY)



1st Ave N and Queen Anne Ave N

- Left turn restricted from 1st Ave N to John St and Thomas St
- New signals on Thomas St at 1st Ave N and Queen Anne Ave N

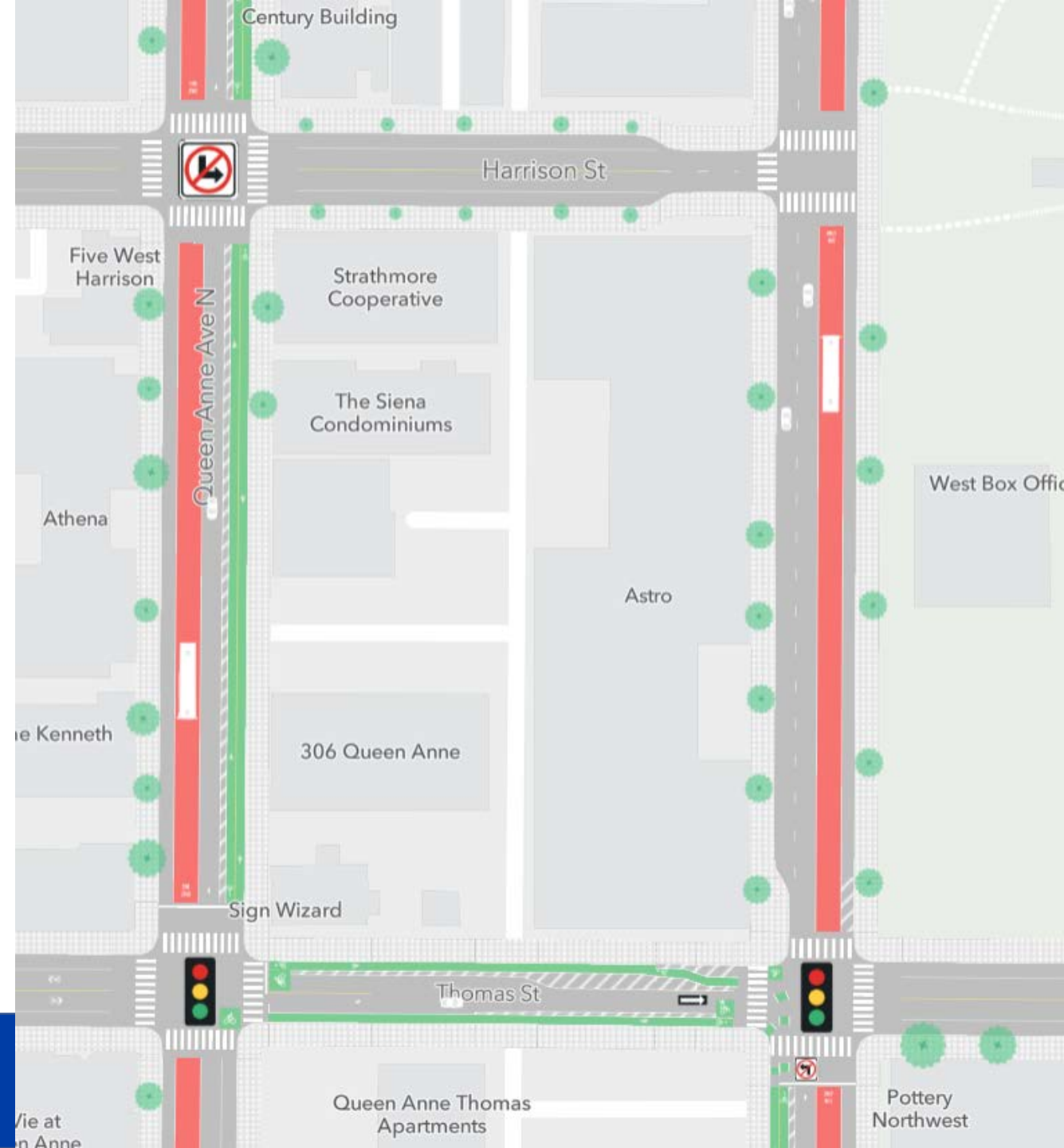
(DRAFT, FOR DISCUSSION PURPOSES ONLY)



1st Ave N and Queen Anne Ave N

- New curb bulbs on 1st Ave N & Harrison St
- Left turn restricted from Queen Anne Ave N to Harrison St
- Two-way protected bike lane on the east side of Queen Anne Ave N

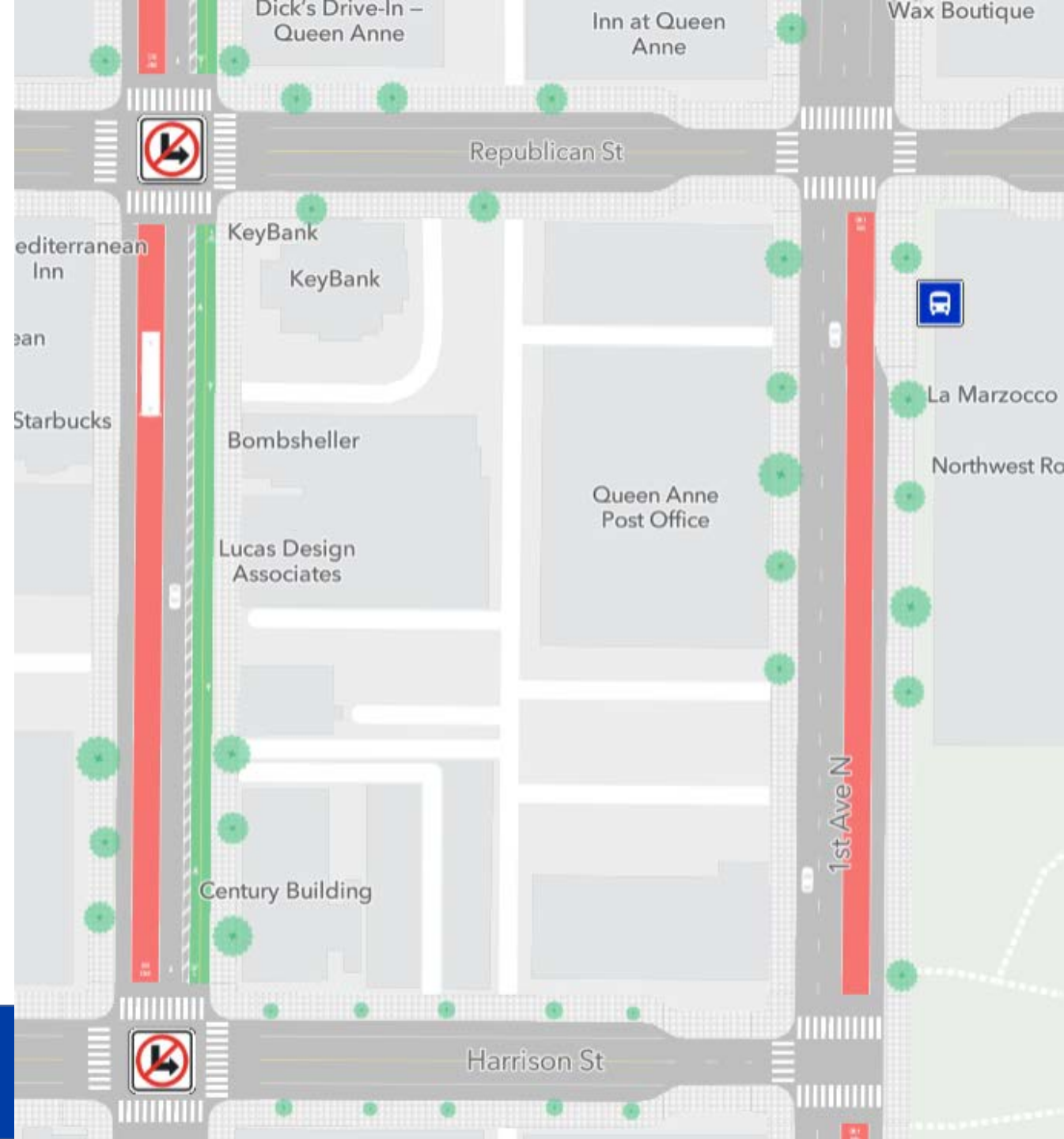
(DRAFT, FOR DISCUSSION PURPOSES ONLY)



1st Ave N and Queen Anne Ave N

- New curb bulbs on Harrison St and Republican St on 1st Ave N
- Left turn restricted from Queen Anne Ave N to Republican St

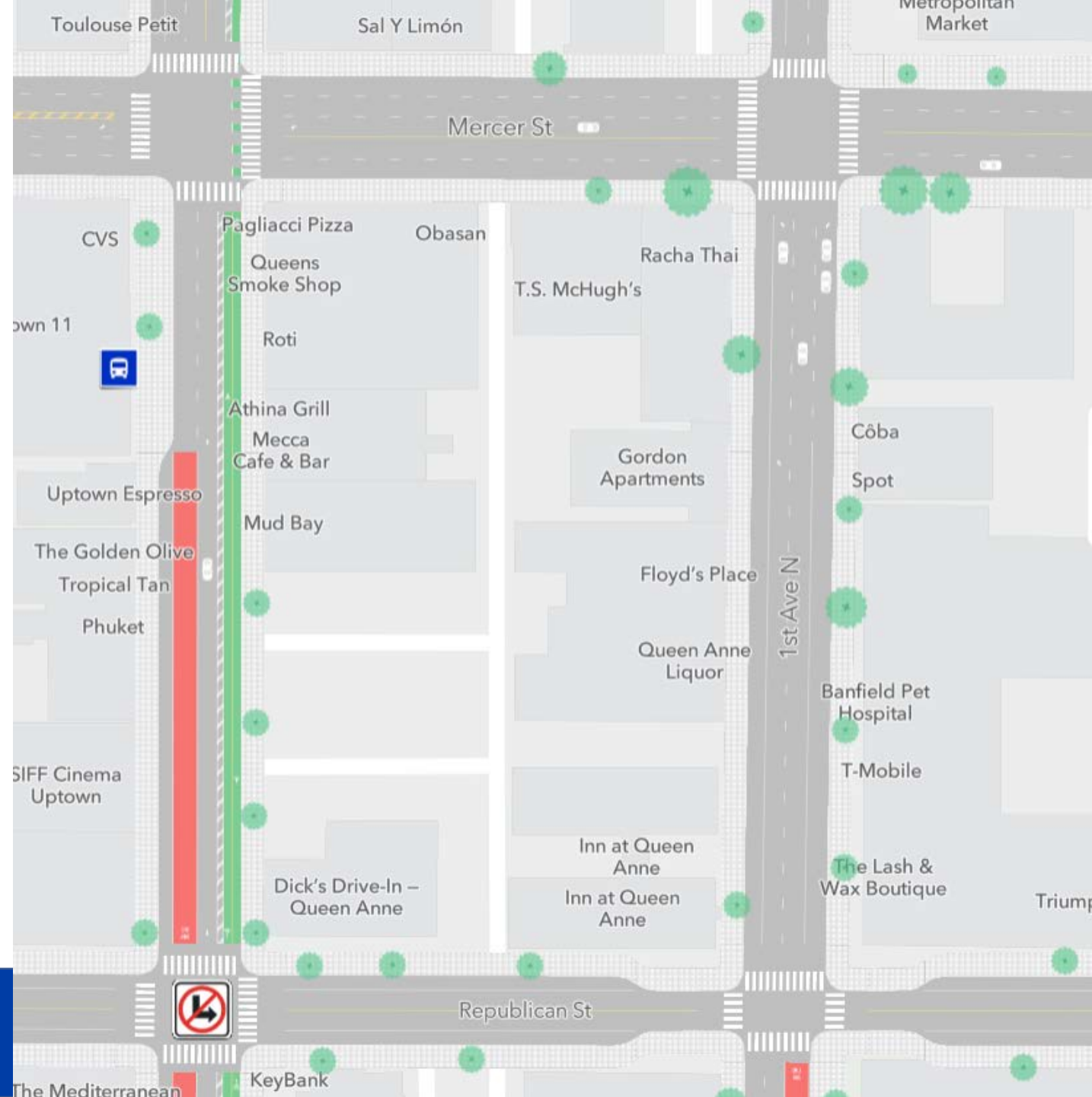
(DRAFT, FOR DISCUSSION PURPOSES ONLY)



1st Ave N and Queen Anne Ave N

- Left turn restricted from Queen Anne Ave N to Republican St
- Removal of existing mid-block crossing north of Republican St

(DRAFT, FOR DISCUSSION PURPOSES ONLY)



1st Ave N and Queen Anne Ave N

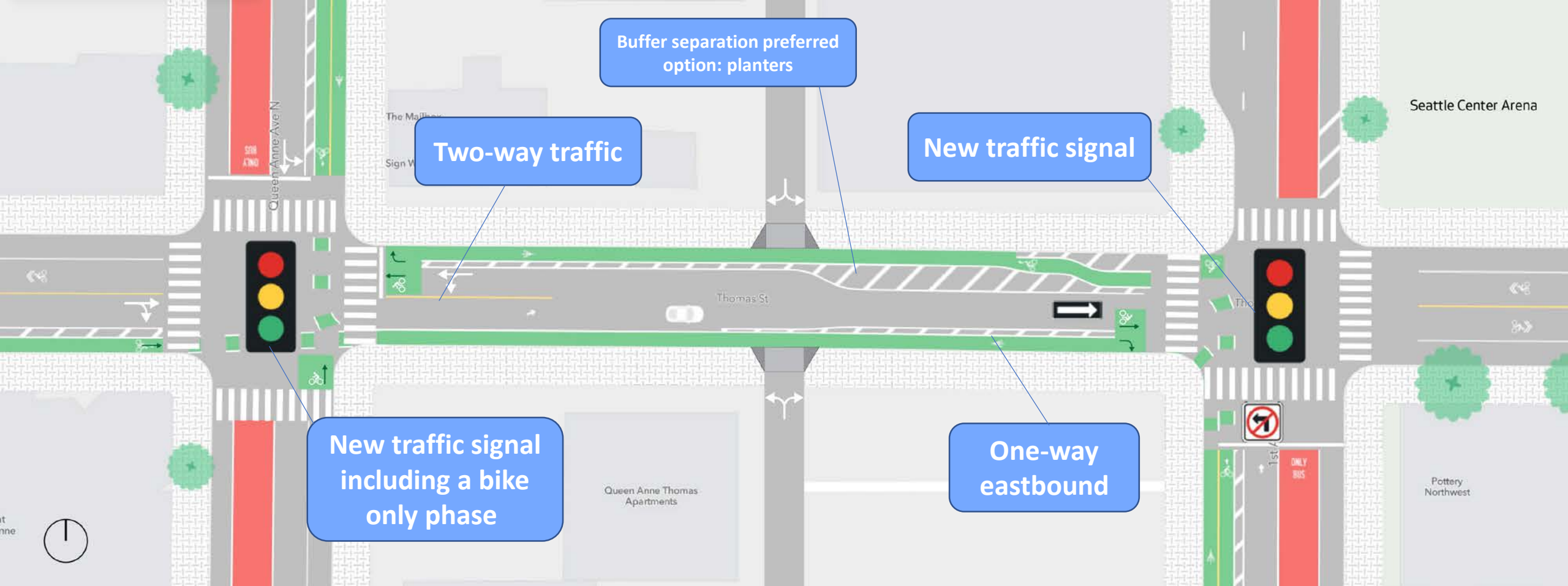
- Review PBL connection at Queen Anne Ave N between Roy and Mercer St***

*** = *conceptual design, not included with arena street improvement plans*

(DRAFT, FOR DISCUSSION PURPOSES ONLY)



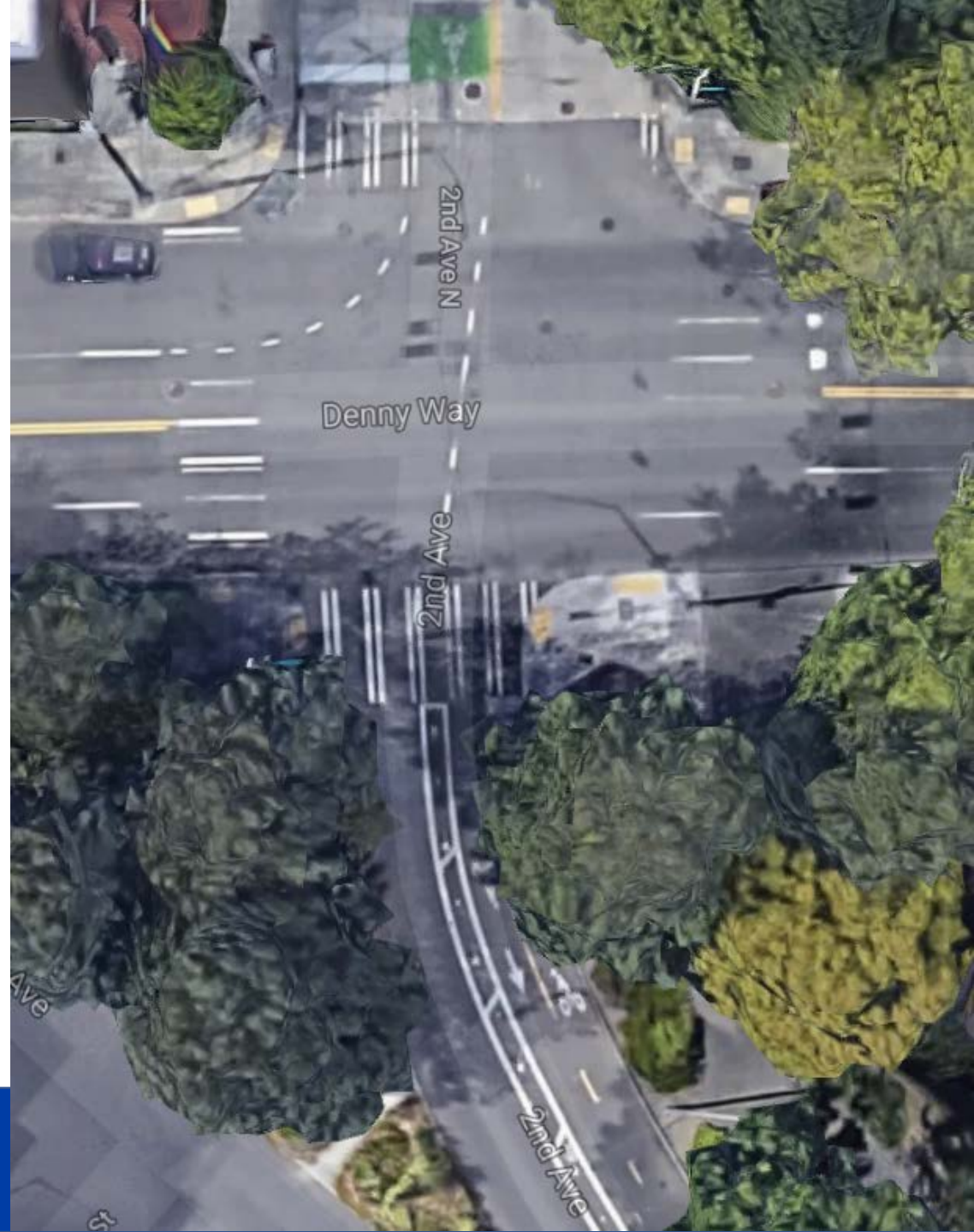
Thomas St between 1st Ave N and Queen Anne Ave N



(DRAFT, FOR DISCUSSION PURPOSES ONLY)

New Arena at Seattle Center: 2nd Ave / Denny Way Intersection

- Need to accommodate two 10' southbound travel lanes along 2nd Ave south of Denny Way
- Discuss/workshop 2-way PBL placement separated space for pedestrians at intersection
- Existing channelization and right-of-way shown



2nd Ave / Denny Way Intersection - Looking North



1st Ave / Denny Way to 2nd Ave / Broad St Existing Conditions

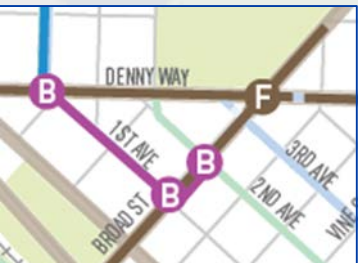
Per Key Arena Master Use Permit (MUP), a two-way PBL will come down the West side of 1st Ave N to Denny Way

High volume of vehicles (~150/hr) making WB to SB turn onto Warren Pl and connecting to 1st Ave

Western curb space = paid parking

Eastern curb space = Bus Only lane or paid parking

Northern curb space = Bus Only lane or paid parking



1st Ave / Denny Way to 2nd Ave / Broad St Proposed PBL Connection

Proposed West-leg
crosswalk

Denny Way

Denny Way

3rd Ave

Broad St

Trio Condos

Matae Belltown
Condominiums

Bay St

Conflict point
mitigation TBD;
considering vehicle
restrictions

Warren Pl

Univera

Existing curb bulb
to be removed

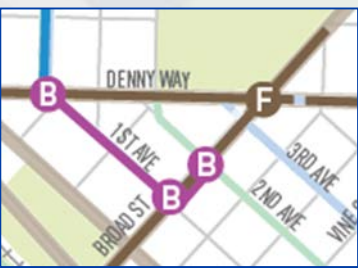
2900
Apartments

KIRO TV

2nd Ave

Conflict point
mitigation TBD;
considering vehicle
restrictions

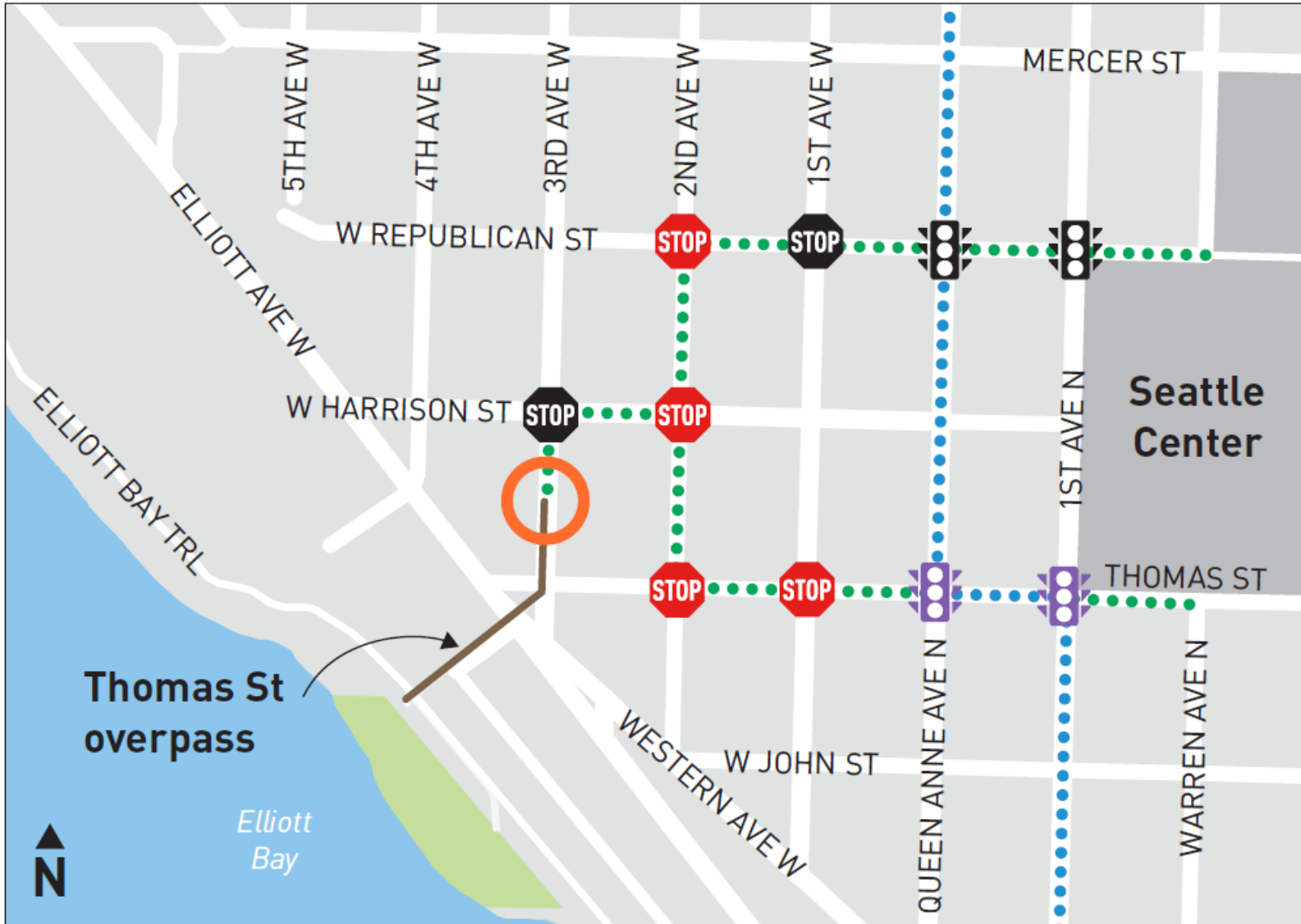
Bay Vista Tower



100 ft



Thomas St Overpass and Seattle Center to Waterfront NGW

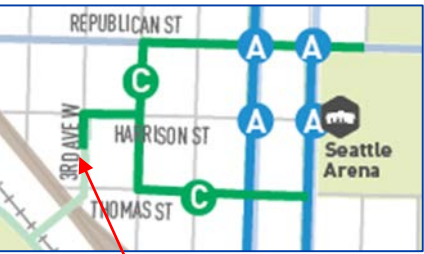


SEATTLE CENTER TO WATERFRONT NEIGHBORHOOD GREENWAY

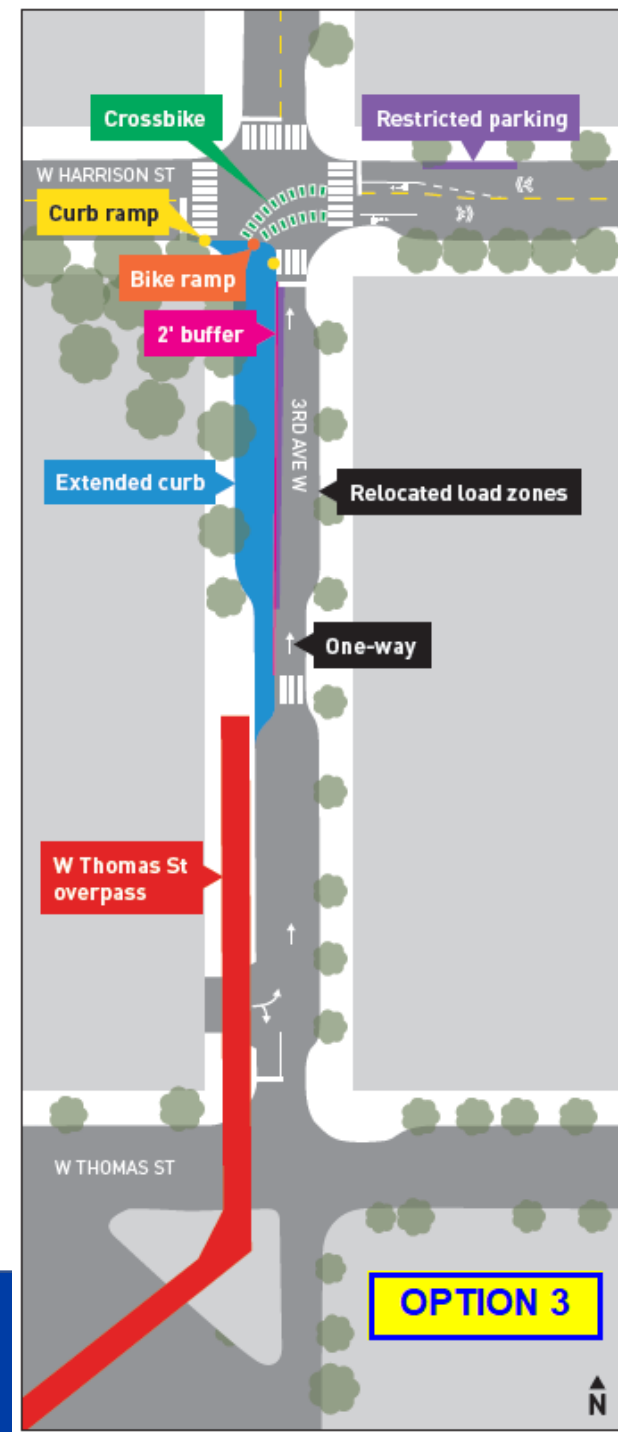
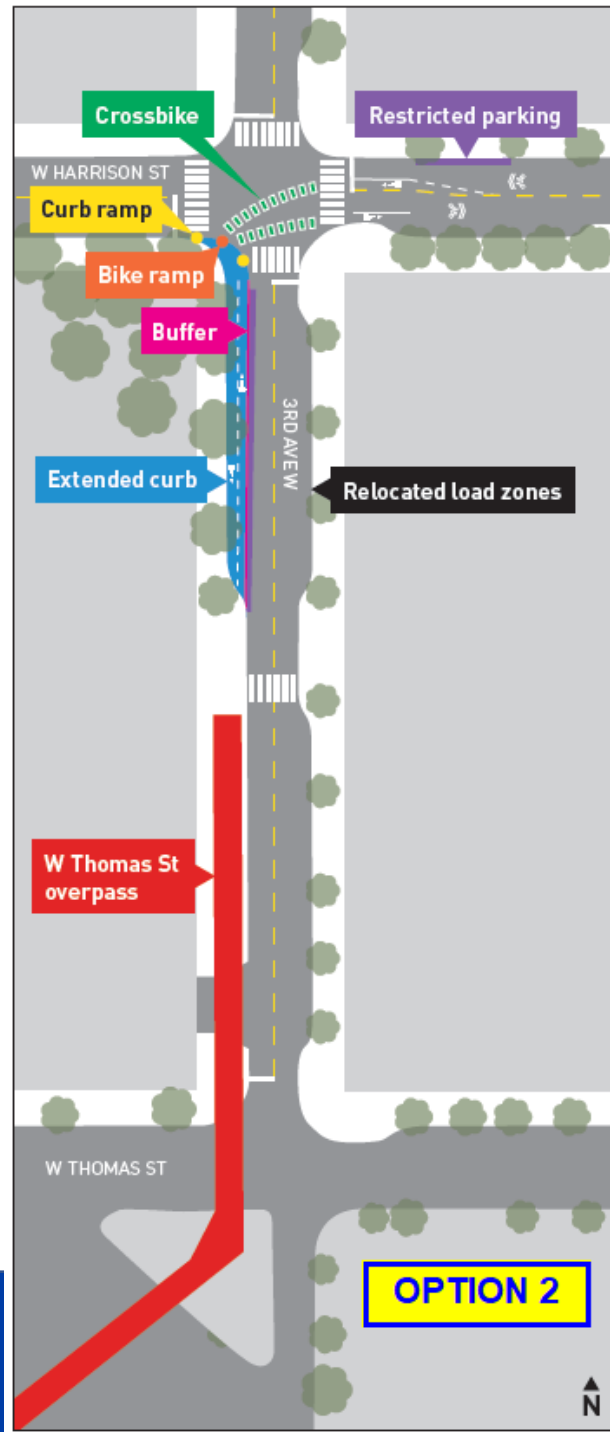
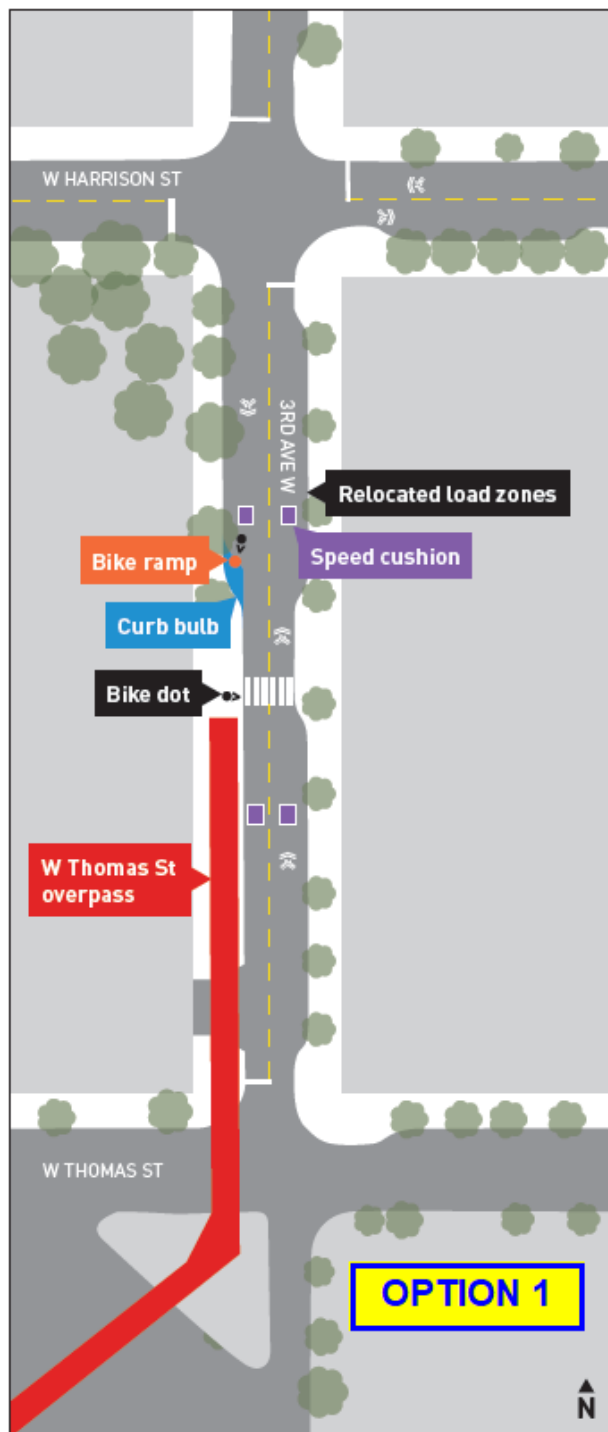
Proposed Scope

- Planned Neighborhood Greenway (target year 2021)
- Planned bike lanes (target year 2021 - by others)
-  Signal upgrades (by others)
-  New signals (by others)
-  Retained existing all-way stop
-  New all-way stop
-  Improved civil connection to the Thomas St Overpass

Thomas St Overpass and Seattle Center to Waterfront NGW

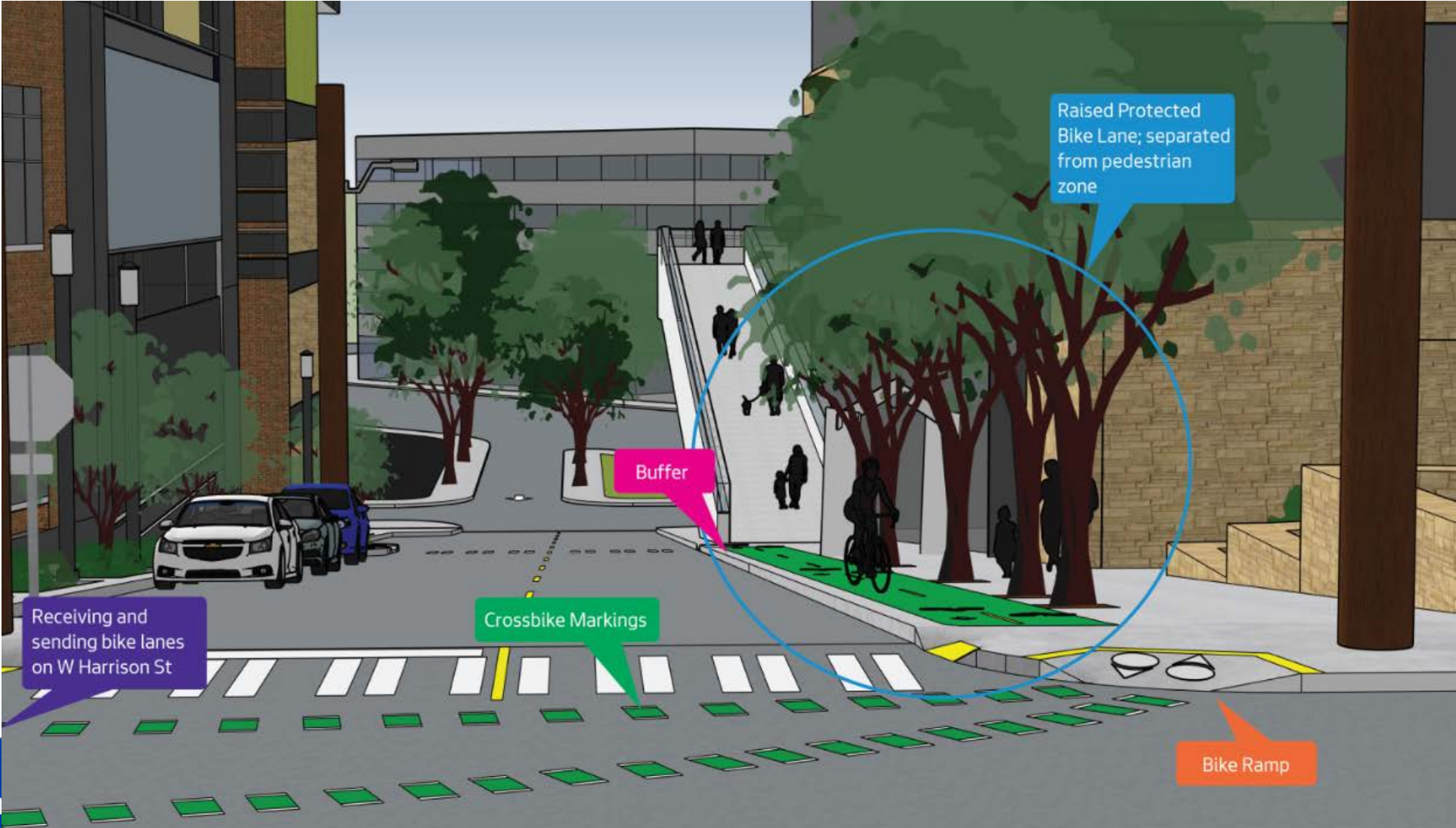


NGW Connection to Thomas St Overpass 2/19/20 Options



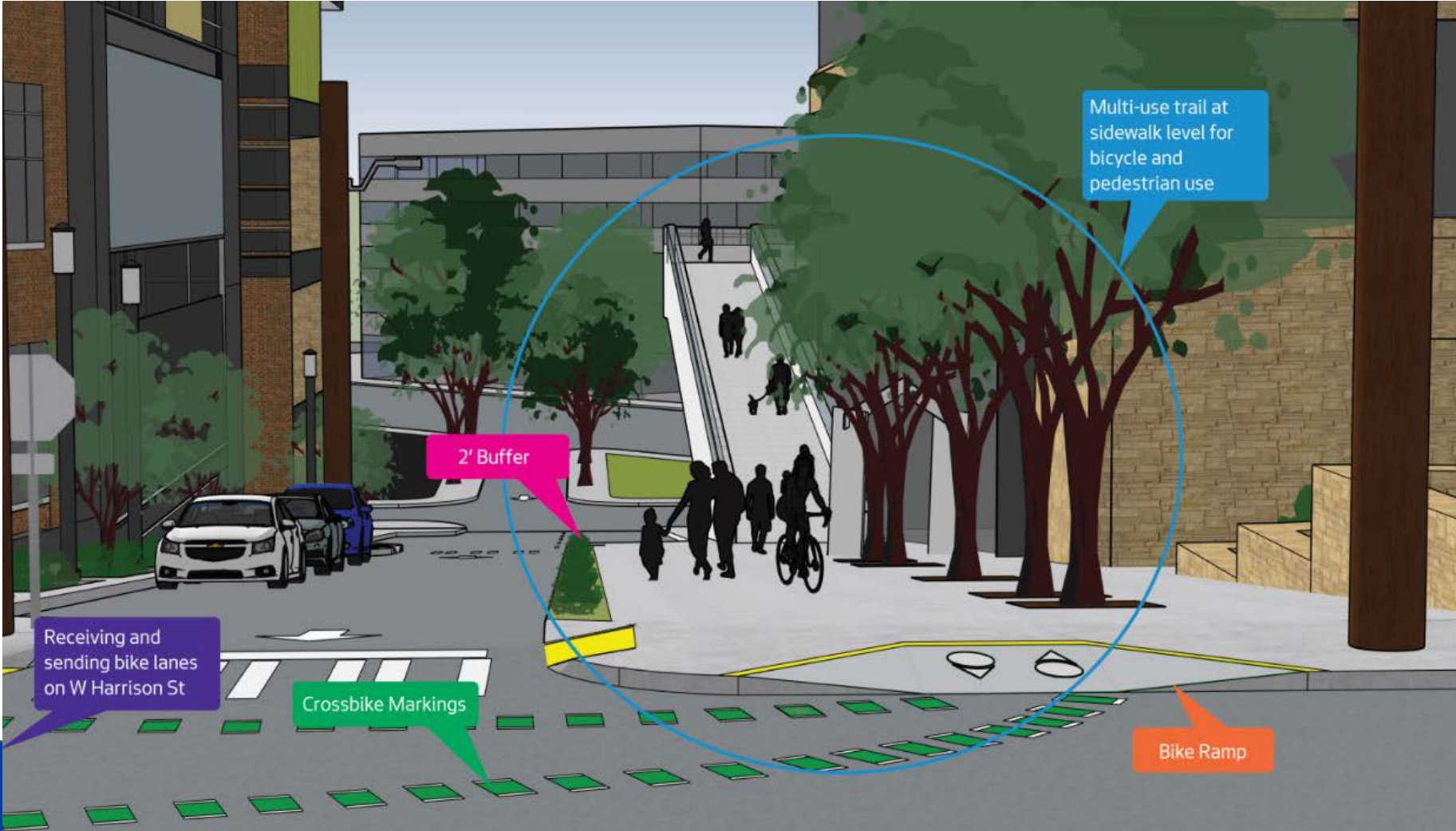
Thomas St Overpass and Seattle Center to Waterfront NGW - Option 2

A raised protected bike lane and pedestrian sidewalk that would extend from the existing curb bulb by the Thomas St Overpass entrance to the 3rd Ave W and W Harrison St intersection.



Thomas St Overpass and Seattle Center to Waterfront NGW - Option 3

A multi-use trail at sidewalk level that would extend from the existing curb bulb by the Thomas St Overpass entrance to the 3rd Ave W and W Harrison St intersection, expanding the trail to the current center line of 3rd Ave W. This option would turn the majority of 3rd Ave W into a one-way street between W Thomas St and W Harrison St.



Thomas St Overpass and Seattle Center to Waterfront NGW

- Online survey & drop-in session general takeaway so far...
 - 212 respondents and 50 attendees
 - Positive response for Options 2 and 3
 - Prefer delineated space between people biking and walking
 - 80% respondents willing to bike 1-3 blocks out of way for less steep route
- Next steps
 - Advance design with community feedback and updated arena design

Websites

- **NODO MAP**

- *<https://www.seattle.gov/transportation/NODOMAP>*

- **Seattle Center to Waterfront NGW**

- *<https://www.seattle.gov/transportation/projects-and-programs/programs/greenways-program/seattle-center-to-waterfront-greenway>*



Comments/Questions?