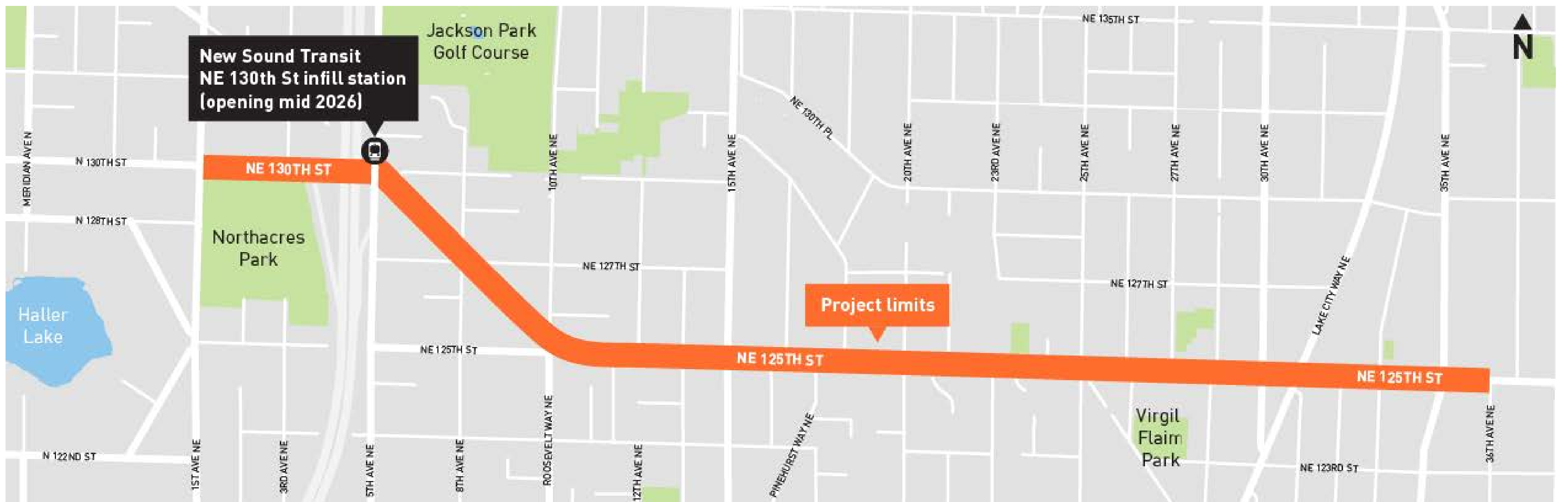


# NE 130TH ST & NE 125TH ST MOBILITY AND SAFETY PROJECT



Project limits east of Lake City Way are still under evaluation and may change

## Project Overview

We're making changes on NE 130th St, Roosevelt Way NE, and NE 125th St from 1st Ave NE to east of Lake City Way NE. These changes will make it safer and easier for people walking, biking, rolling, and taking the bus in the area. It will also help people get to the new light rail station at NE 130th St near I-5. We expect 90% of light rail riders to get to the new station by walking, biking, or taking transit.

### Project improvements include:

- Raised 12-ft wide shared-use path for people walking, biking, and rolling on the north side of NE 130th St (1st Ave NE to 5th Ave NE) with a planted buffer from 1st Ave NE to 3rd Ave NE
- Protected bike lanes with concrete barriers on Roosevelt Way NE and NE 125th St
- Safer street design with one vehicle lane in each direction, a center turn lane, and protected bike lanes or shared-use path. This design reduces conflicts for turning vehicles and improves overall safety.
- New roundabout at the intersection of Roosevelt Way NE, NE 125th St and 10th Ave NE to help calm traffic and improve traffic flow
- Safety redesign of the 3rd Ave NE and NE 130th St intersection to allow right turns out only
- Bus-focused upgrades to improve frequency and reliability including bus lanes in select areas, bus priority signals, and new or upgraded bus stops
- Crossing improvements such as leading pedestrian intervals to give people crossing a head start, new signalized crossings and flashing crossing beacons, curb bulbs to reduce crossing distances, crossing islands, and restricting right turns on red
- Sidewalk repairs and new accessible curb ramps in select locations
- Traffic calming features, including speed cushions (speed humps) and turn lane medians to prevent passing



*we are here*



**Project Contact**  
 Drue Nyenhuis  
 206-400-7515 | [NE130thSt\\_NE125thSt\\_Project@seattle.gov](mailto:NE130thSt_NE125thSt_Project@seattle.gov)  
[seattle.gov/transportation/NE130thMobilityProject](http://seattle.gov/transportation/NE130thMobilityProject)



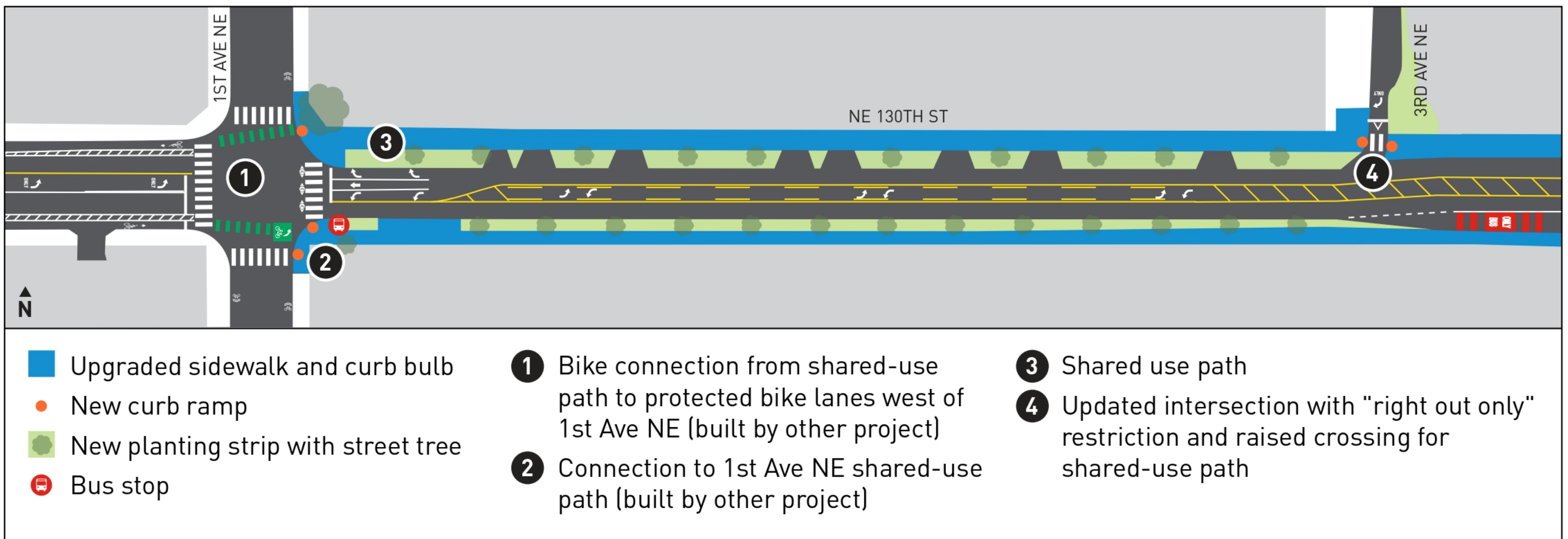
**Seattle**  
 Department of  
 Transportation

The Levy to  
**MOVE SEATTLE**

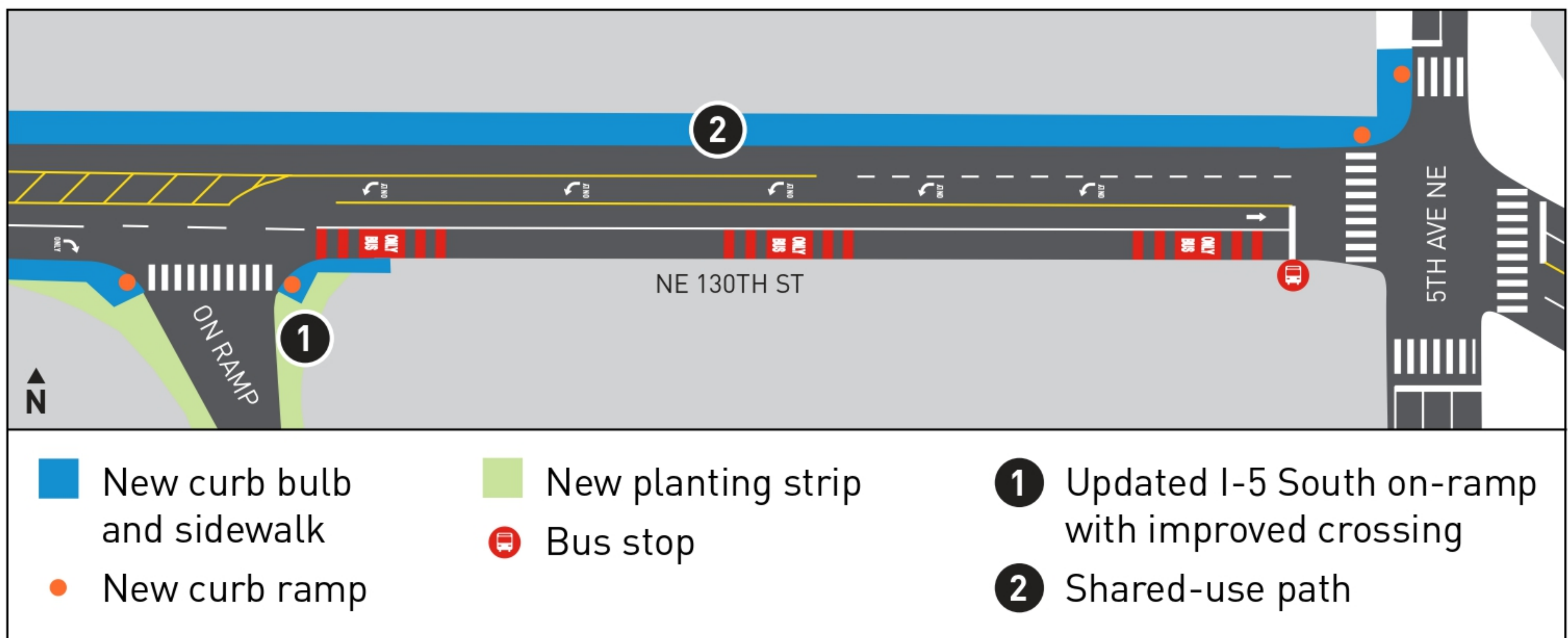


# NE 130TH ST & NE 125TH ST MOBILITY AND SAFETY PROJECT

## NE 130th St: 1st Ave NE to 3rd Ave NE



## NE 130th St: I-5 overpass (3rd Ave NE - 5th Ave NE)

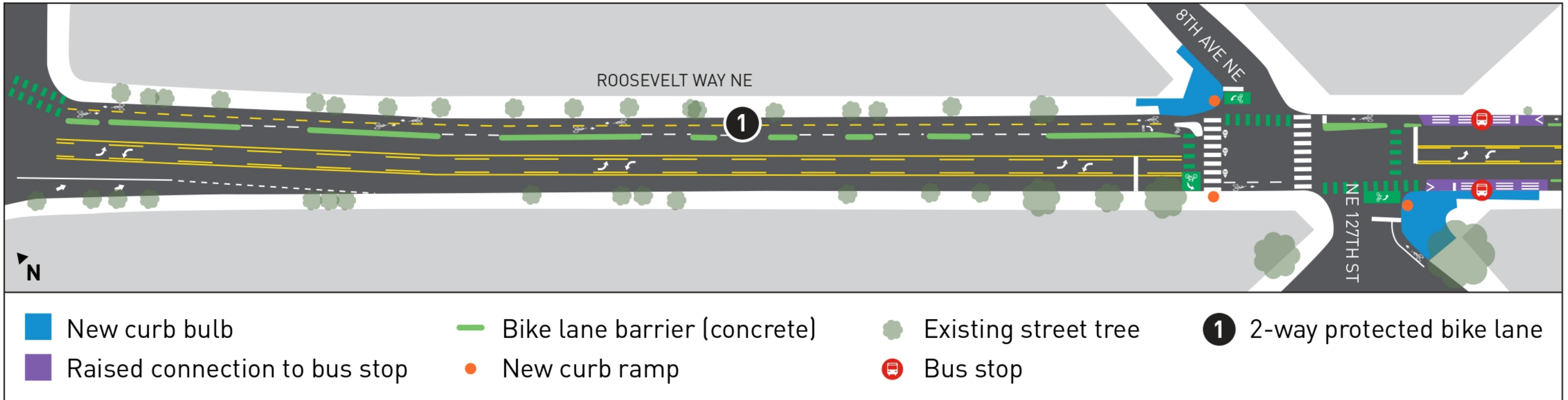


**Project Contact**  
 Drue Nyenhuis  
 206-400-7515 | [NE130thSt\\_NE125thSt\\_Project@seattle.gov](mailto:NE130thSt_NE125thSt_Project@seattle.gov)  
[seattle.gov/transportation/NE130thMobilityProject](http://seattle.gov/transportation/NE130thMobilityProject)

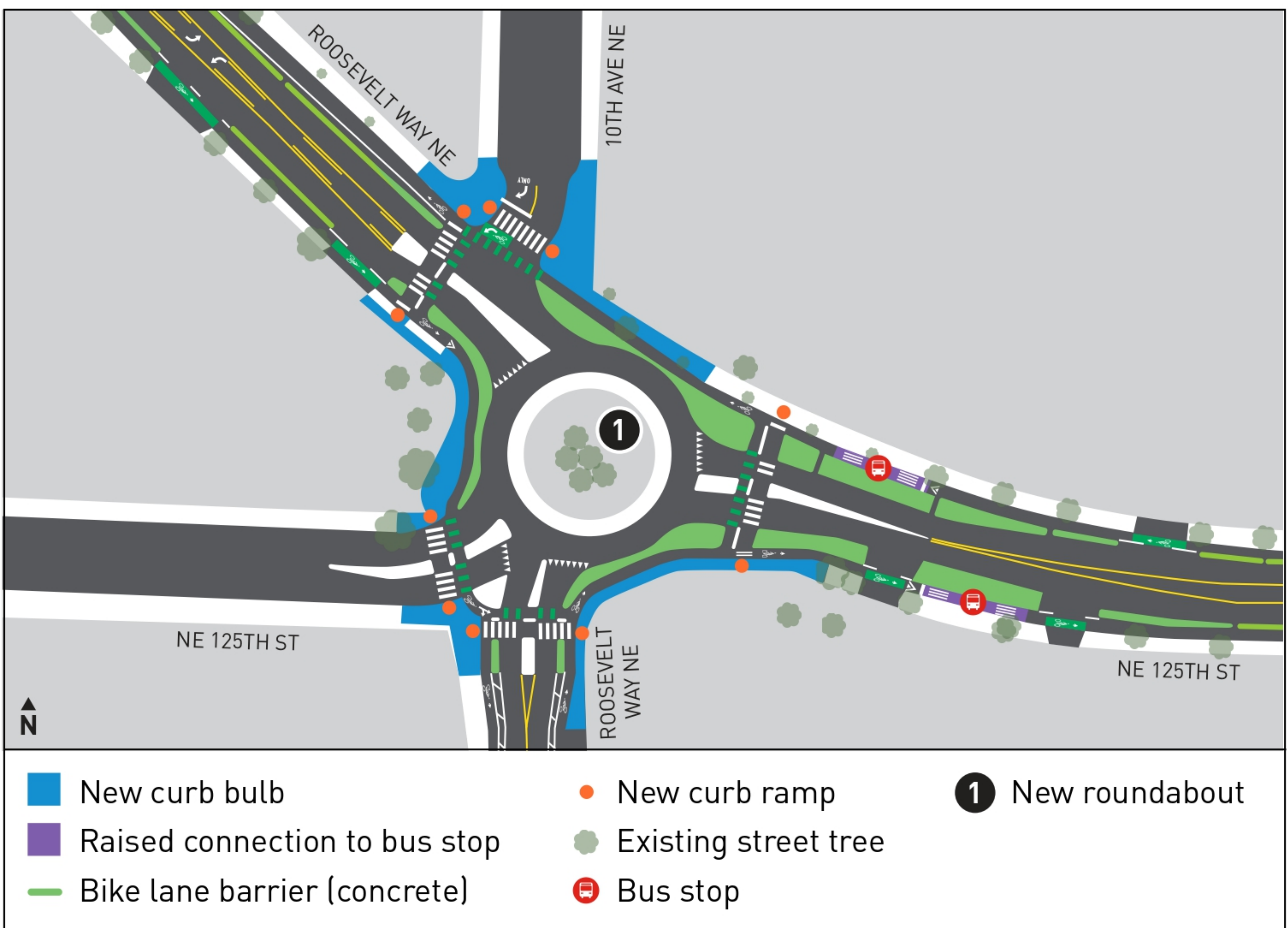


# NE 130TH ST & NE 125TH ST MOBILITY AND SAFETY PROJECT

## Roosevelt Way NE: 5th Ave NE to 8th Ave NE



## Roosevelt Way NE: 10th Ave NE Roundabout

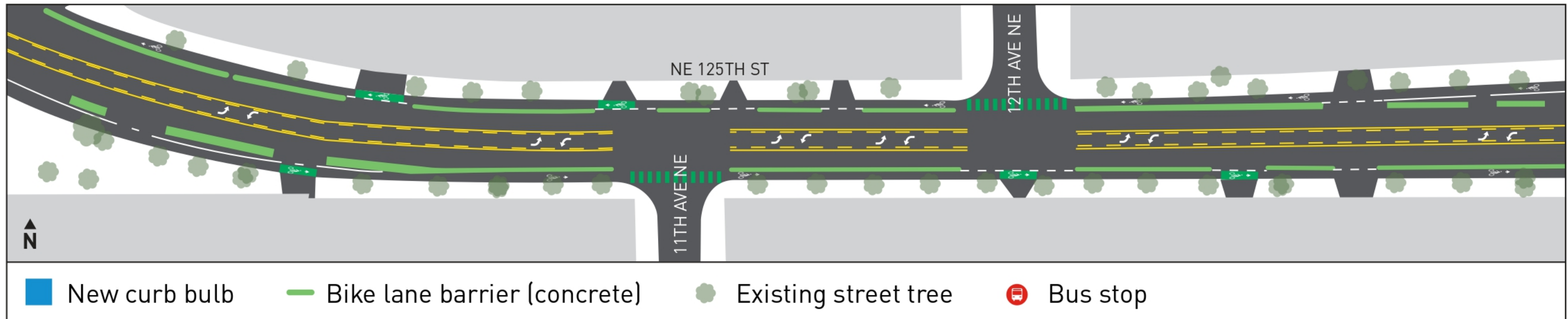


**Project Contact**  
 Drue Nyenhuis  
 206-400-7515 | [NE130thSt\\_NE125thSt\\_Project@seattle.gov](mailto:NE130thSt_NE125thSt_Project@seattle.gov)  
[seattle.gov/transportation/NE130thMobilityProject](http://seattle.gov/transportation/NE130thMobilityProject)

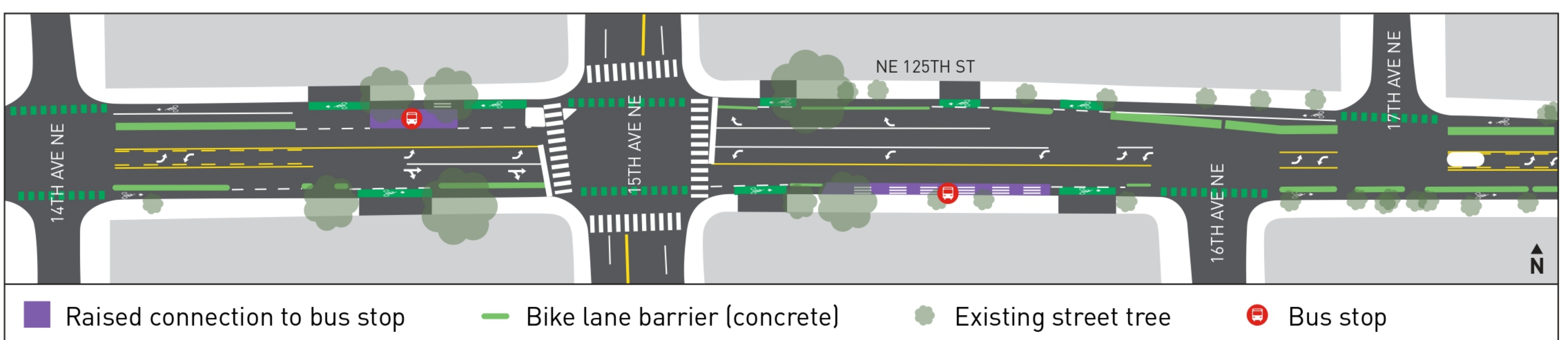


# NE 130TH ST & NE 125TH ST MOBILITY AND SAFETY PROJECT

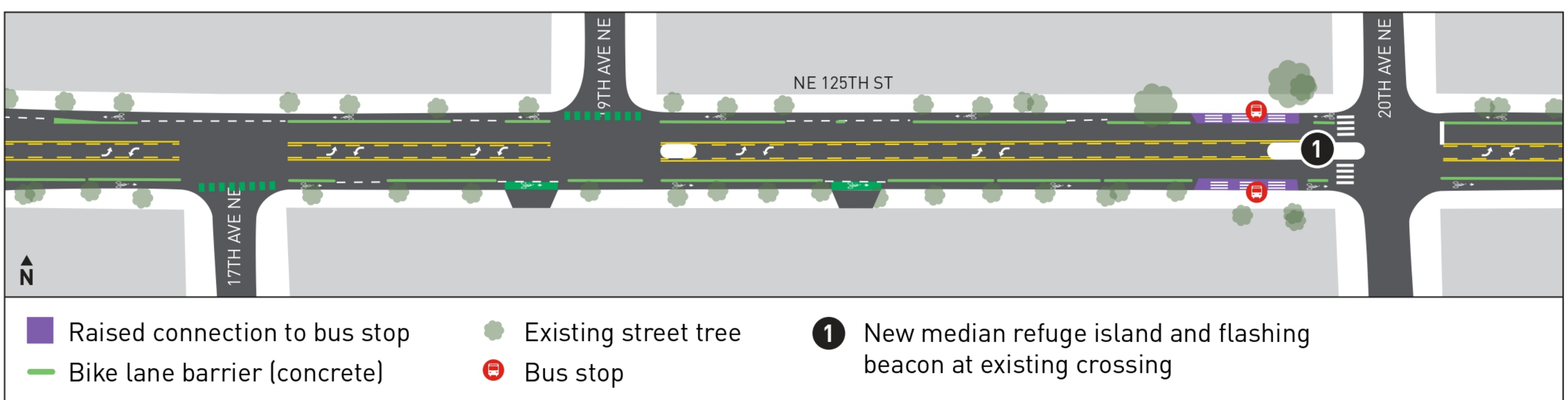
## NE 125th St: 10th Ave NE - 12th Ave NE



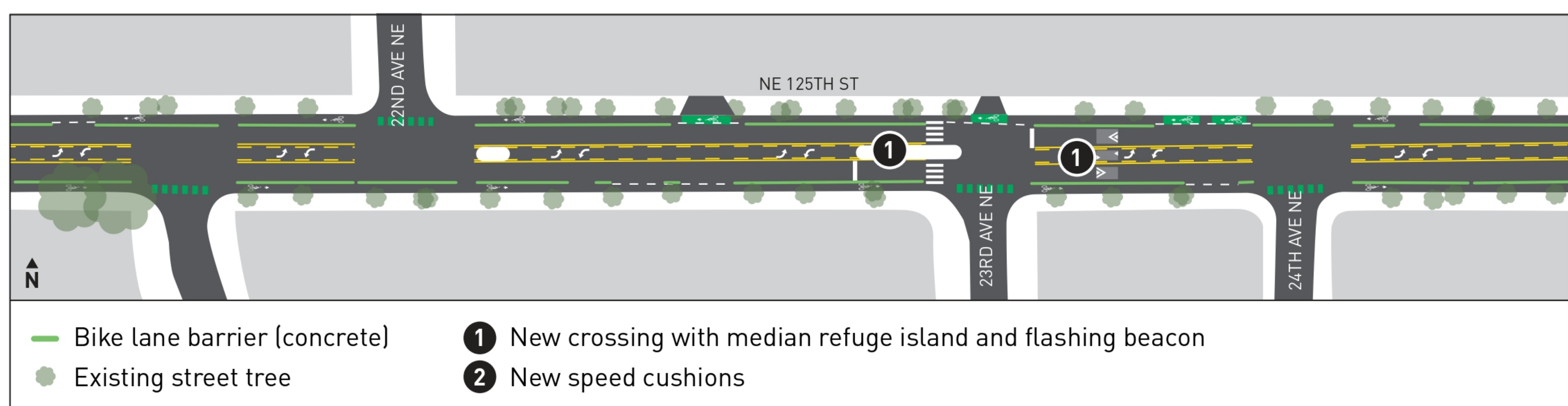
## NE 125th St: 14th Ave NE - 17th Ave NE



## NE 125th St: 17th Ave NE - 20th Ave NE



## NE 125th St: 22nd Ave NE - 24th Ave NE

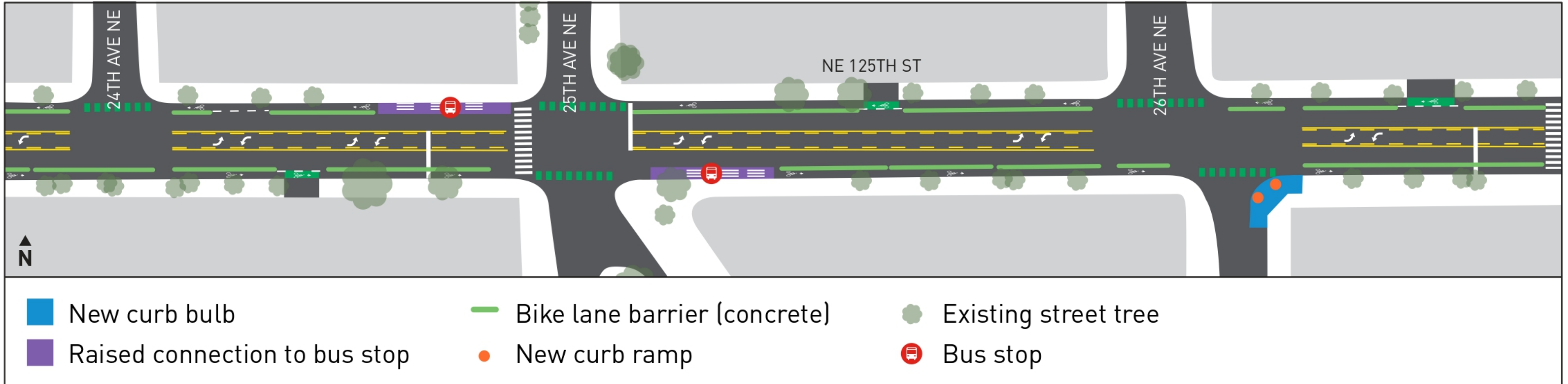


**Project Contact**  
 Drue Nyenhuis  
 206-400-7515 | [NE130thSt\\_NE125thSt\\_Project@seattle.gov](mailto:NE130thSt_NE125thSt_Project@seattle.gov)  
[seattle.gov/transportation/NE130thMobilityProject](http://seattle.gov/transportation/NE130thMobilityProject)

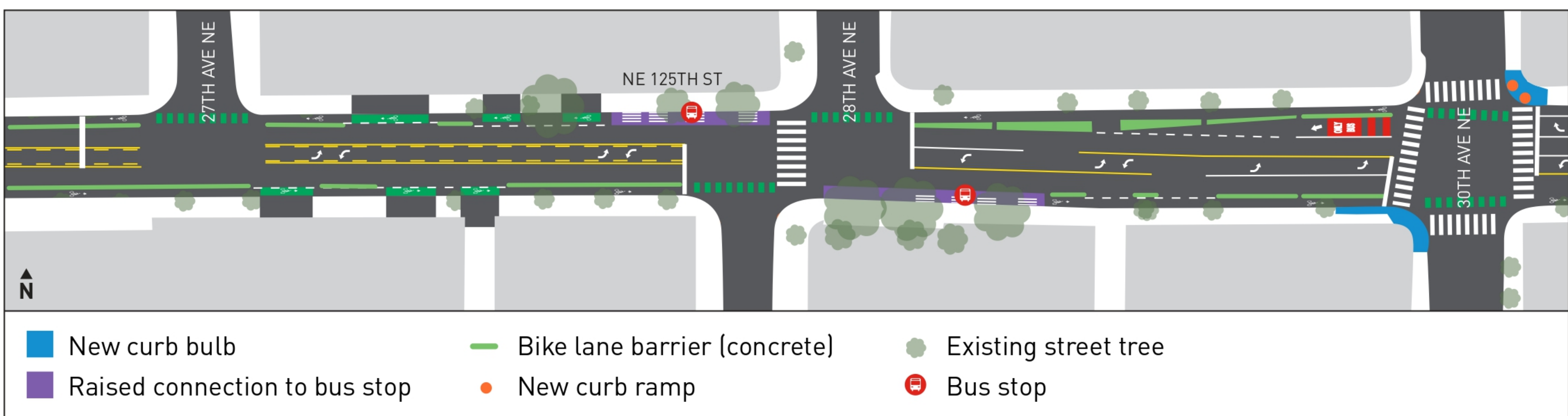


# NE 130TH ST & NE 125TH ST MOBILITY AND SAFETY PROJECT

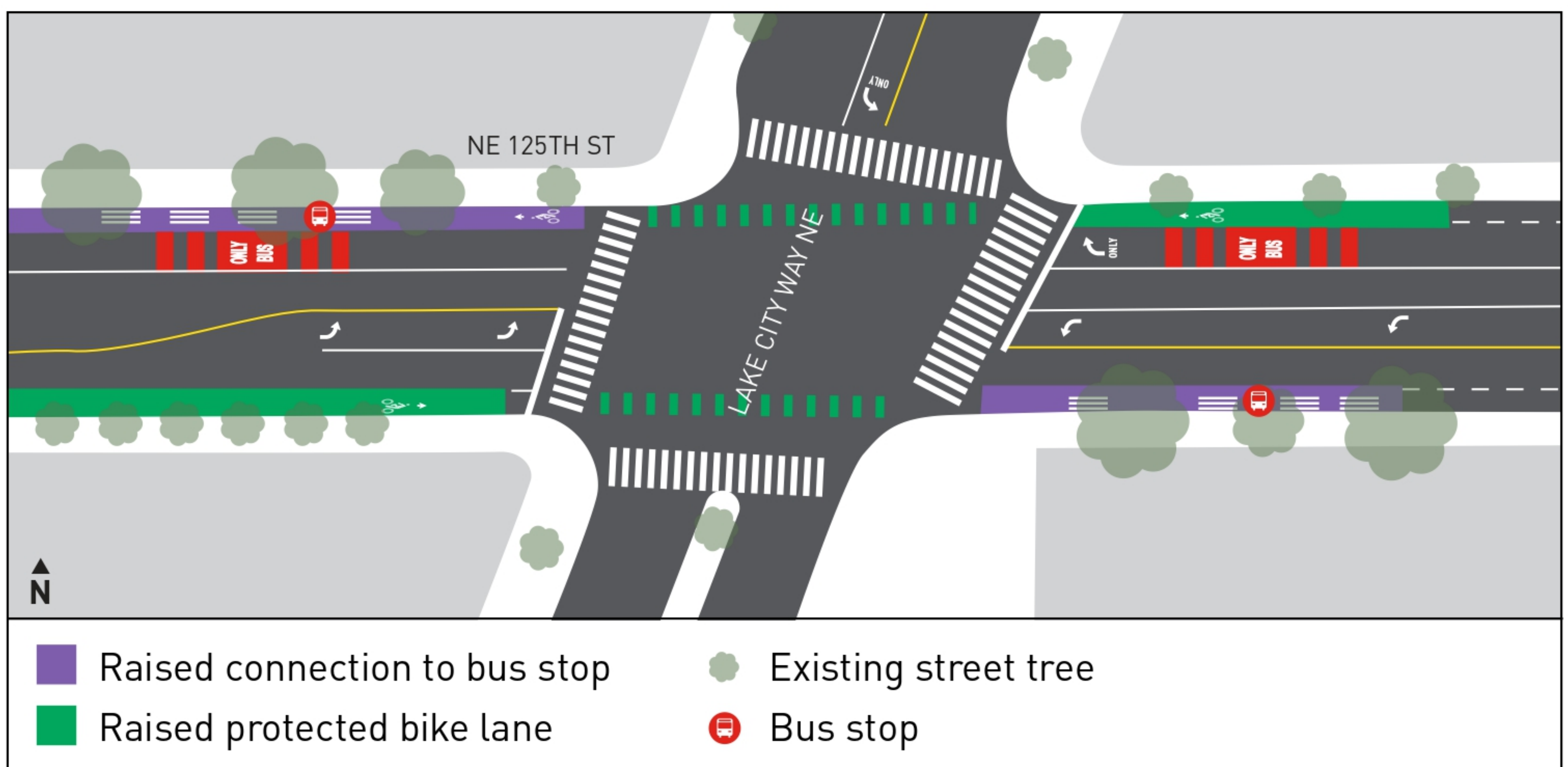
## NE 125th St: 24th Ave NE - 26th Ave NE



## NE 125th St: 27th Ave NE - 30th Ave NE



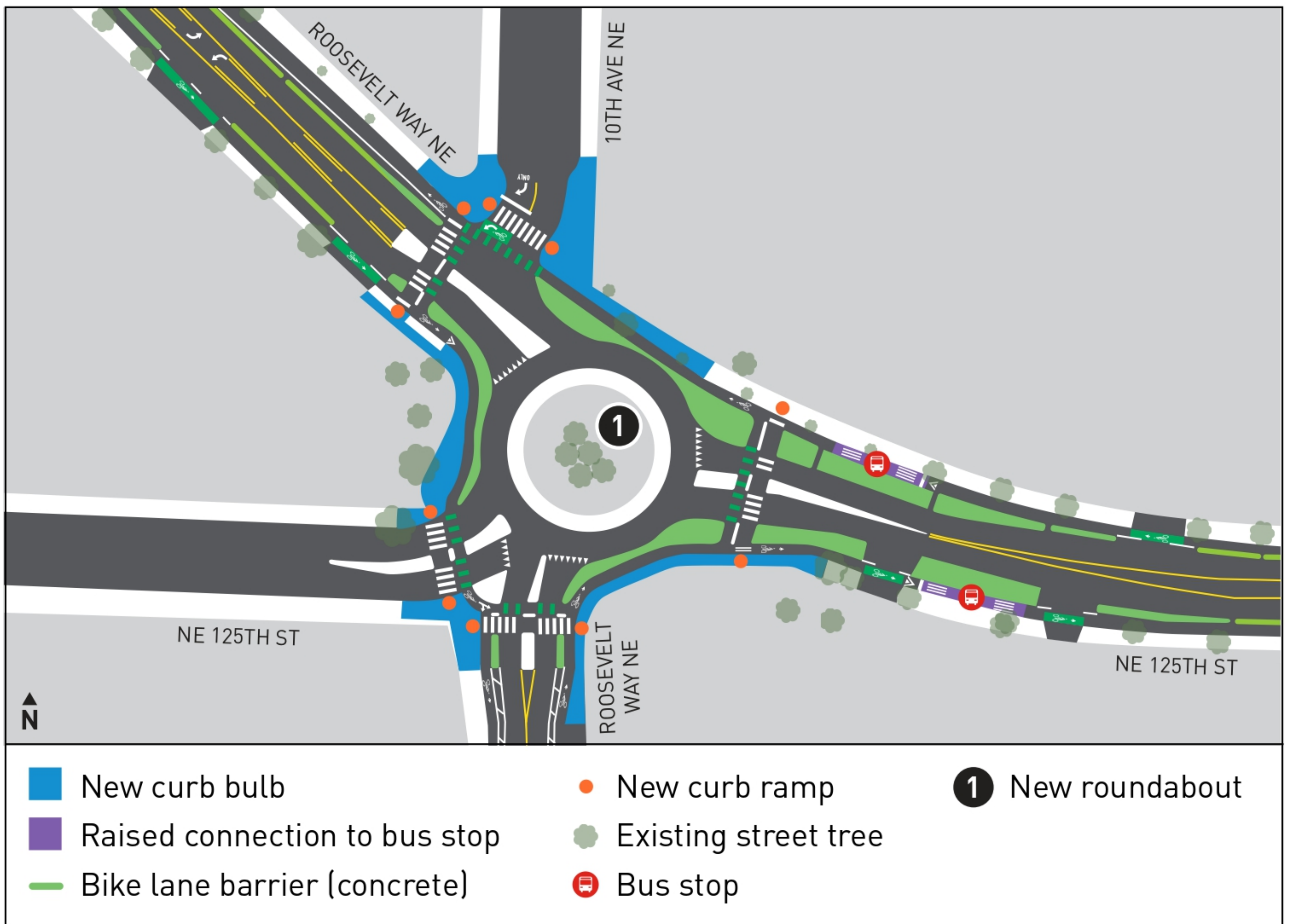
## NE 125th St: Lake City Way NE



**Project Contact**  
 Drue Nyenhuis  
 206-400-7515 | [NE130thSt\\_NE125thSt\\_Project@seattle.gov](mailto:NE130thSt_NE125thSt_Project@seattle.gov)  
[seattle.gov/transportation/NE130thMobilityProject](http://seattle.gov/transportation/NE130thMobilityProject)



# Roosevelt Way NE & 10th Ave NE Roundabout



## Roundabout benefits

- Fewer and less severe collisions
- Flashing crossings for people walking and rolling
- Protected bike lanes through roundabout
- Slower vehicle speeds entering and through the roundabout
- Lower operational costs
- Continuous traffic flow moves more traffic in the same amount of time
- Reduced delay for vehicles
- Improved bus operations
- Less vehicle noise and air pollution

Scan the QR code to take our survey and tell us what you think!



### Project Contact

Drue Nyenhuis  
206-400-7515 | [NE130thSt\\_NE125thSt\\_Project@seattle.gov](mailto:NE130thSt_NE125thSt_Project@seattle.gov)  
[seattle.gov/transportation/NE130thMobilityProject](http://seattle.gov/transportation/NE130thMobilityProject)



Seattle  
Department of  
Transportation

The Levy to

**MOVE SEATTLE**

