



S Cloverdale St: Pedestrian Enhancement Project

Early Design Check-In

Our vision, mission, and core values

Vision: Seattle is a thriving equitable community powered by dependable transportation

Mission: to deliver a transportation system that provides safe and affordable access to places and opportunities

Committed to **6 core values:**

- Equity
- Safety
- Mobility
- Sustainability
- Livability
- Excellence

Presentation overview

- Background
- Project area
- Existing conditions
- Early Concepts
- Discussion
- Next Steps

Background

- YVYC Project in 2018:
 - Funding to improve S Cloverdale Crossings
 - 8th Ave Signal rebuild and timing adjustment
 - New crosswalk at 12th Ave S
- SCL will also add additional lighting to the SR 99 underpass.



Background

- Project priorities:
 - Pedestrian Safety Improvements
 - Traffic Calming
- \$500k Construction Budget
- \$90k YVYC Design Budget
- Key pedestrian connection between community destinations, parks, and school
- Major Freight Street, Frequent Transit Network
- On Ramp to NB SR 99
- SPU utility mains under turn lane

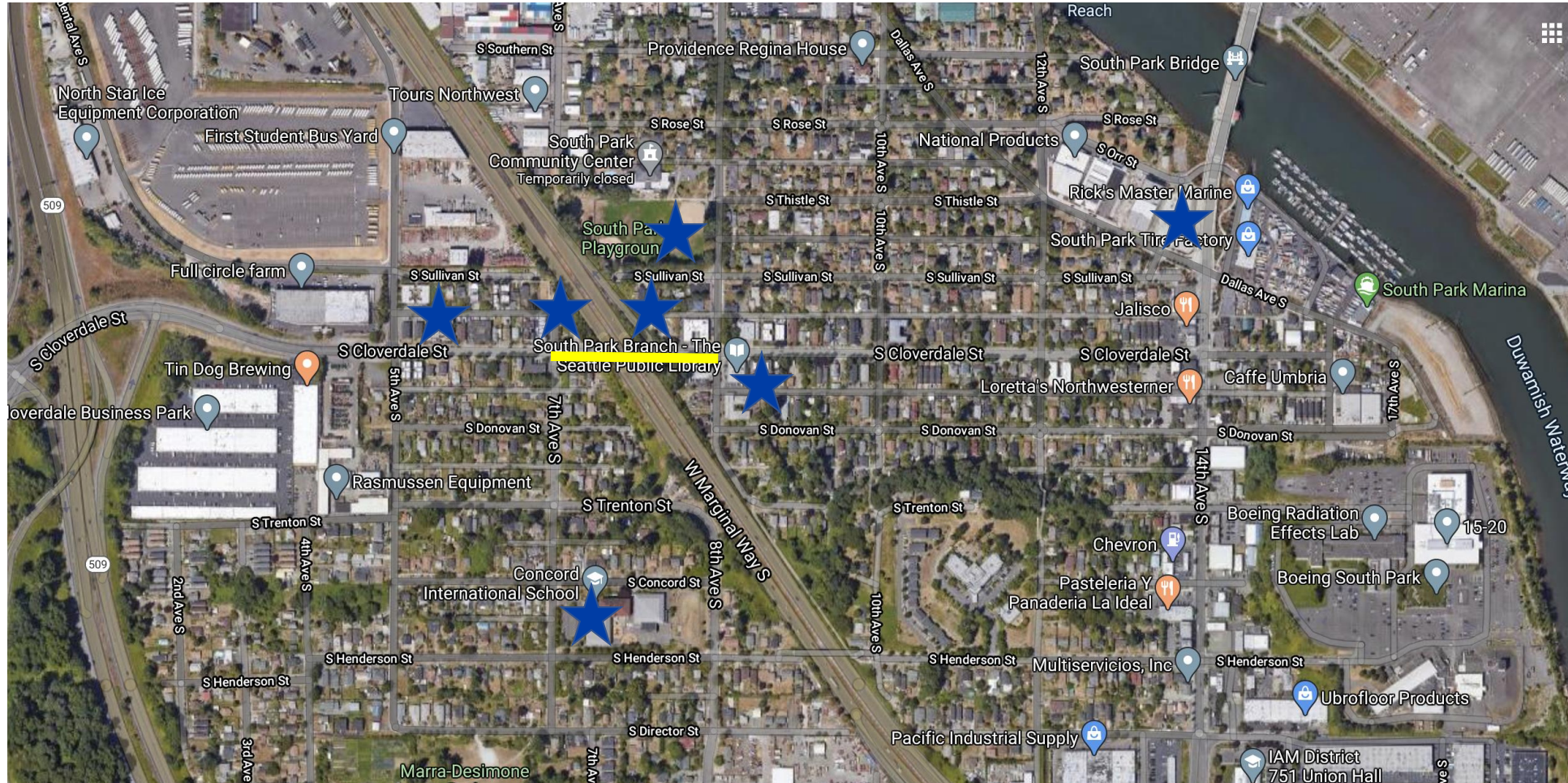


What we're hearing from the community:

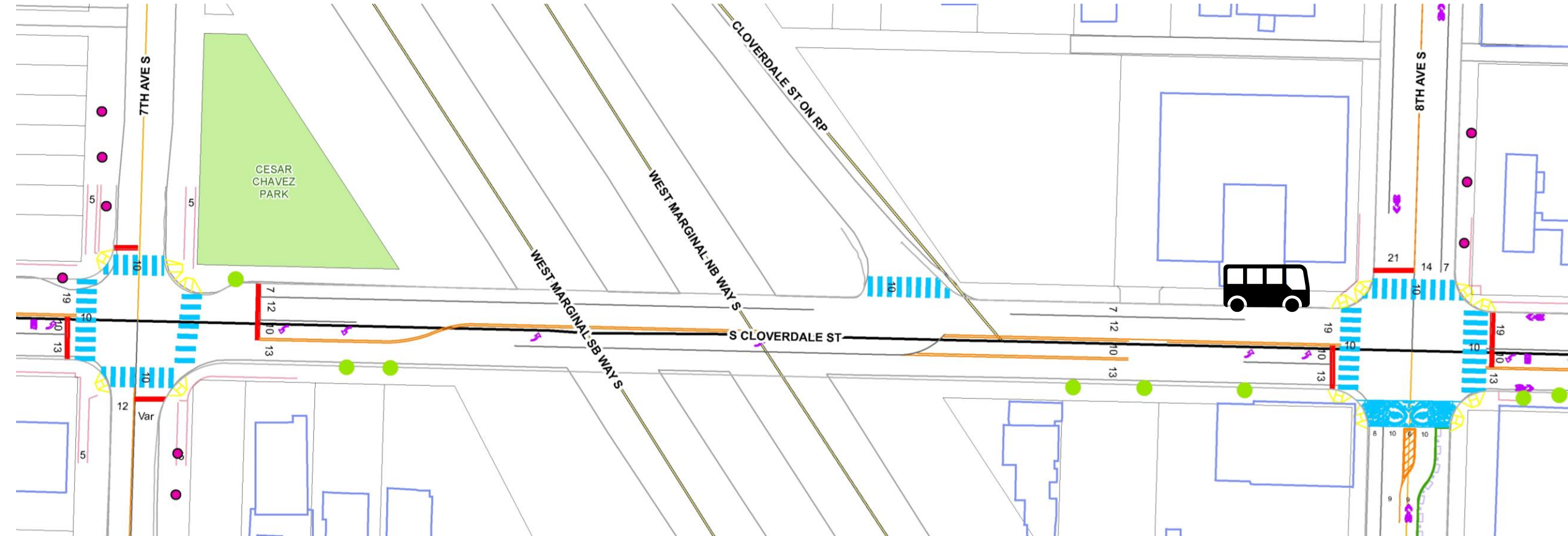
- Cut through traffic, especially freight
- Need for safer pedestrian crossings
- Need for additional pedestrian walking areas
- Need for additional pedestrian lighting



Project area



Existing conditions + Opportunities



Streets Illustrated Design Standards

Classification	Street Type	Function	Roadway type	Truck volumes	Design objective
----------------	-------------	----------	--------------	---------------	------------------

Major Freight St

Urban Village Main

Located within urban villages or centers.

Principal arterial

Designed to accommodate large trucks that move through urban villages or centers.

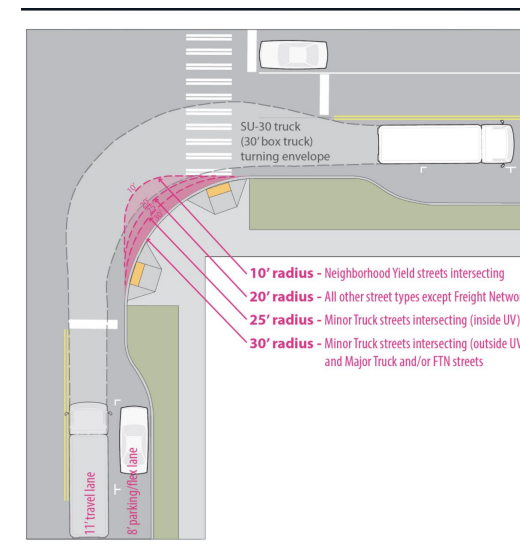
Recommended Lane Widths:

11' Travel Lanes

10' Turn Only Lane

30' Curb radius where Major Freight St intersects Frequent Transit Network

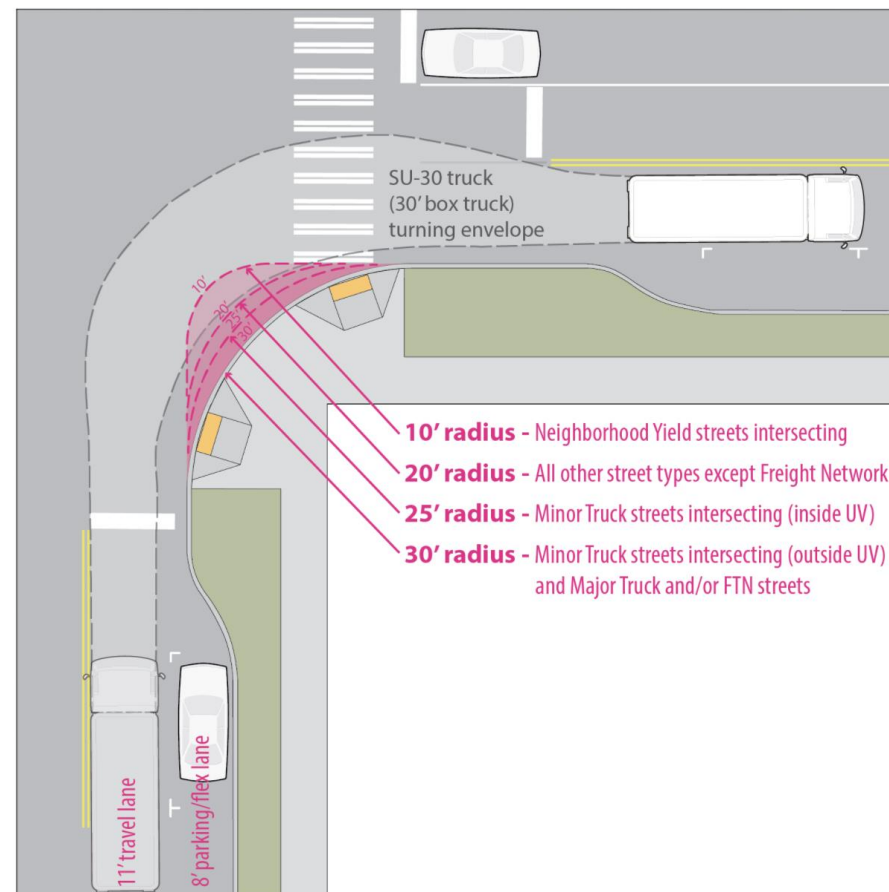
20' other curb radii



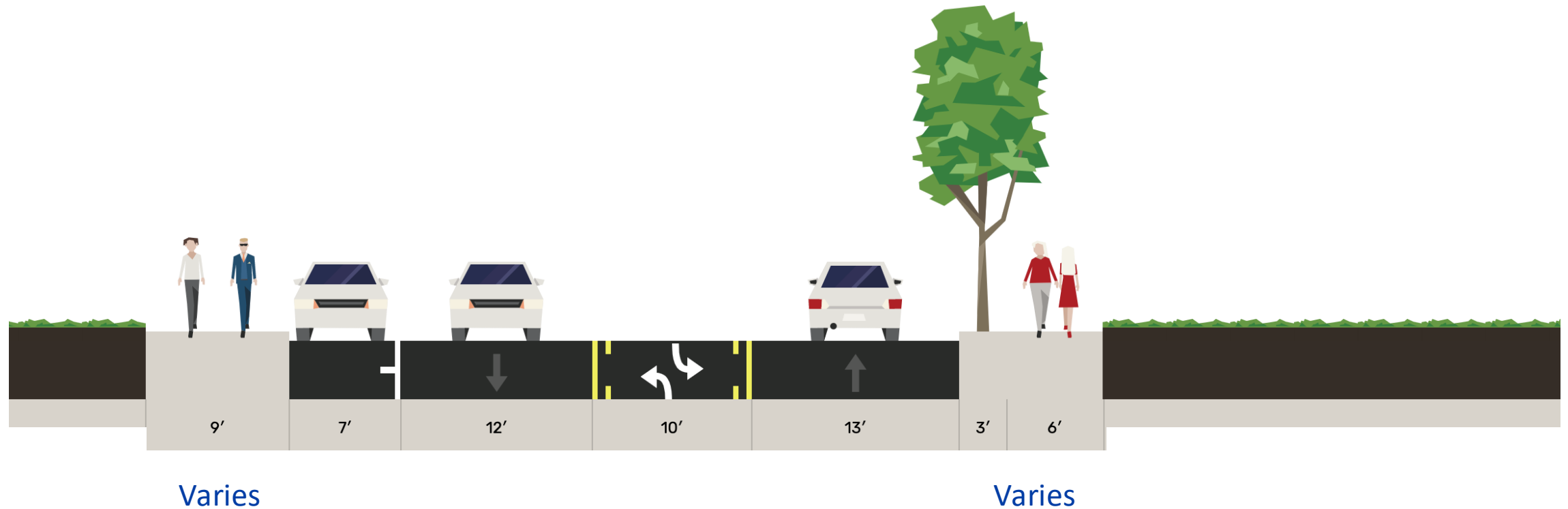
Streets Illustrated Design Standards

Recommended Lane Widths:

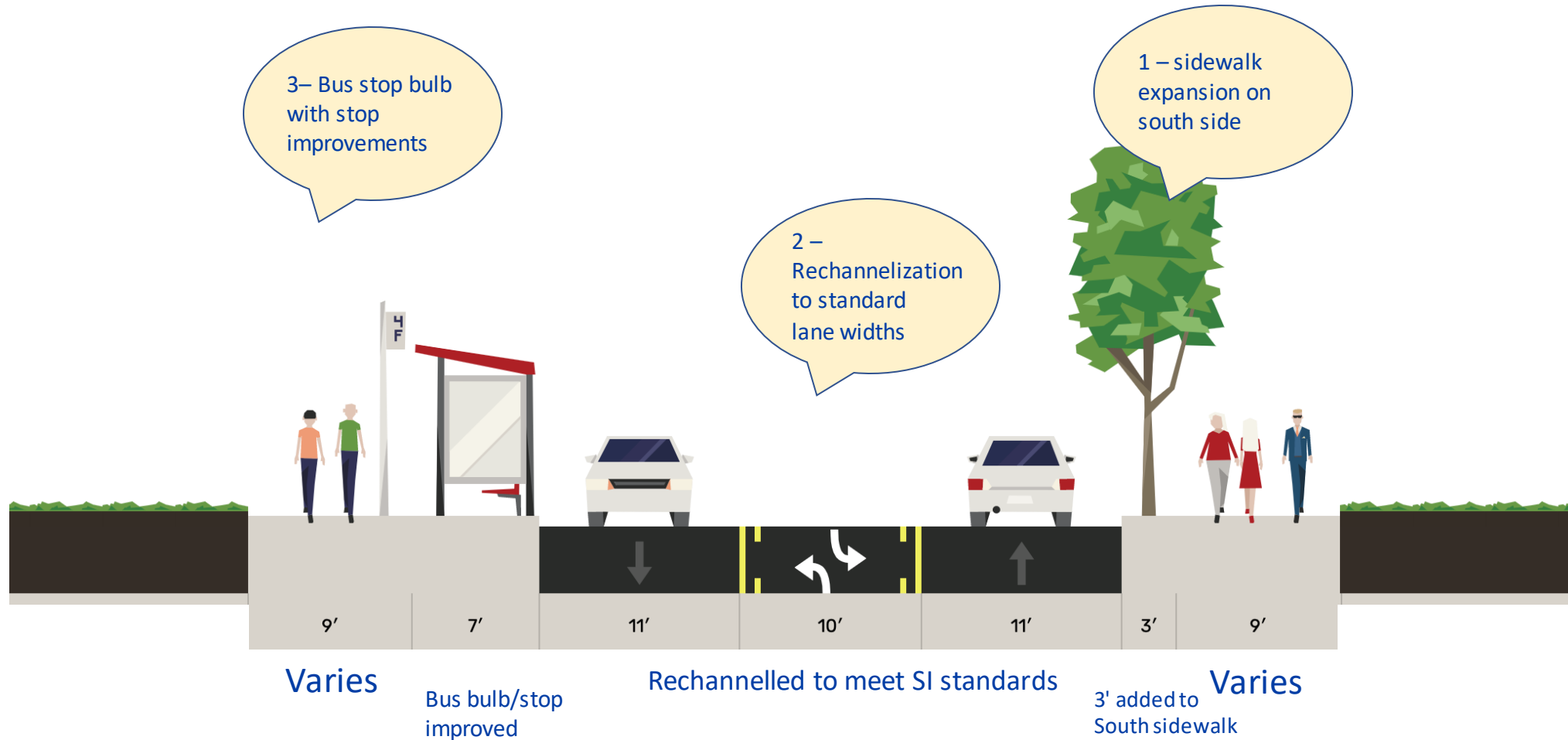
- 11' Travel Lanes
- 10' Turn Only Lane
- 30' Curb radius where Major Freight St intersects Frequent Transit Network
- 20' other curb radii



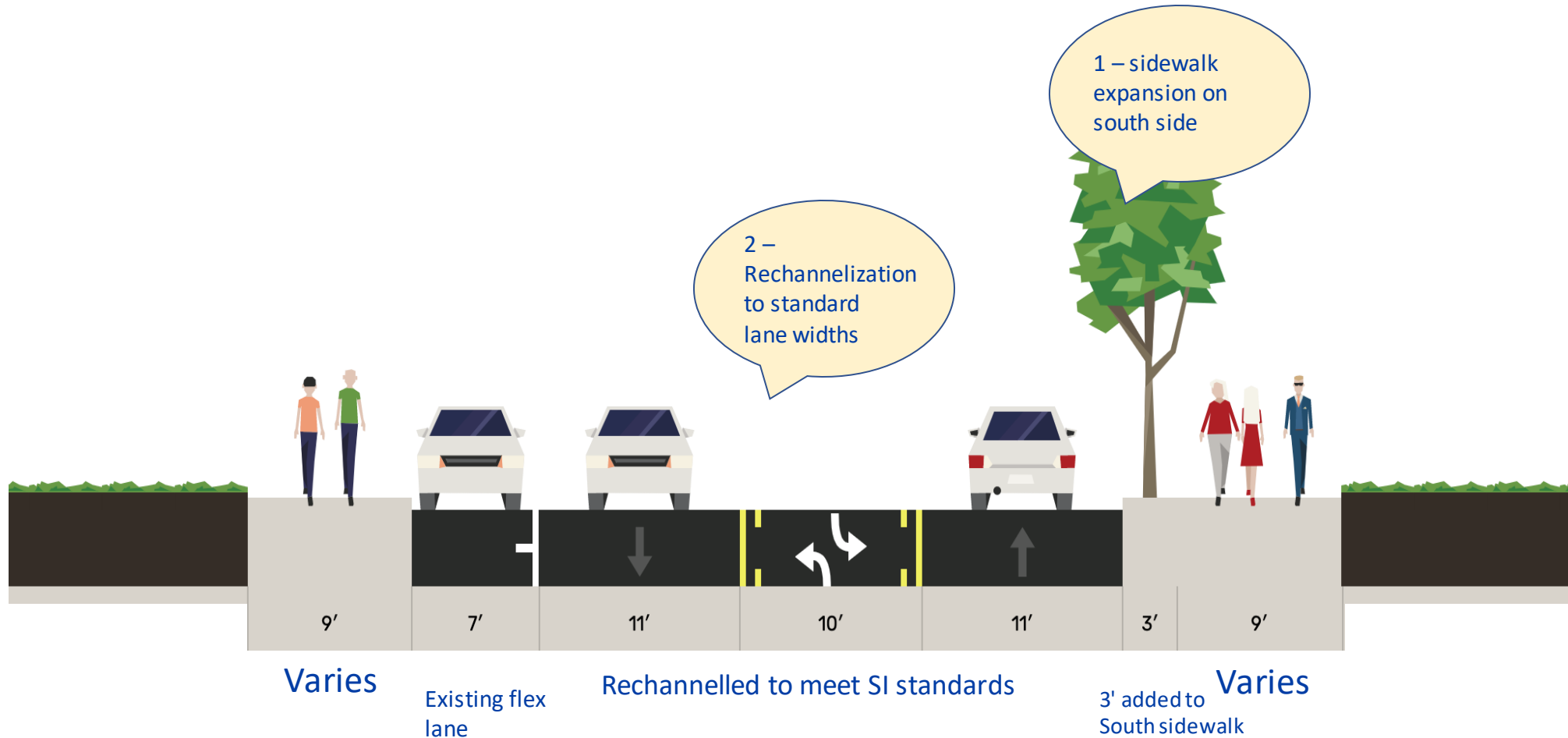
Existing – Looking East



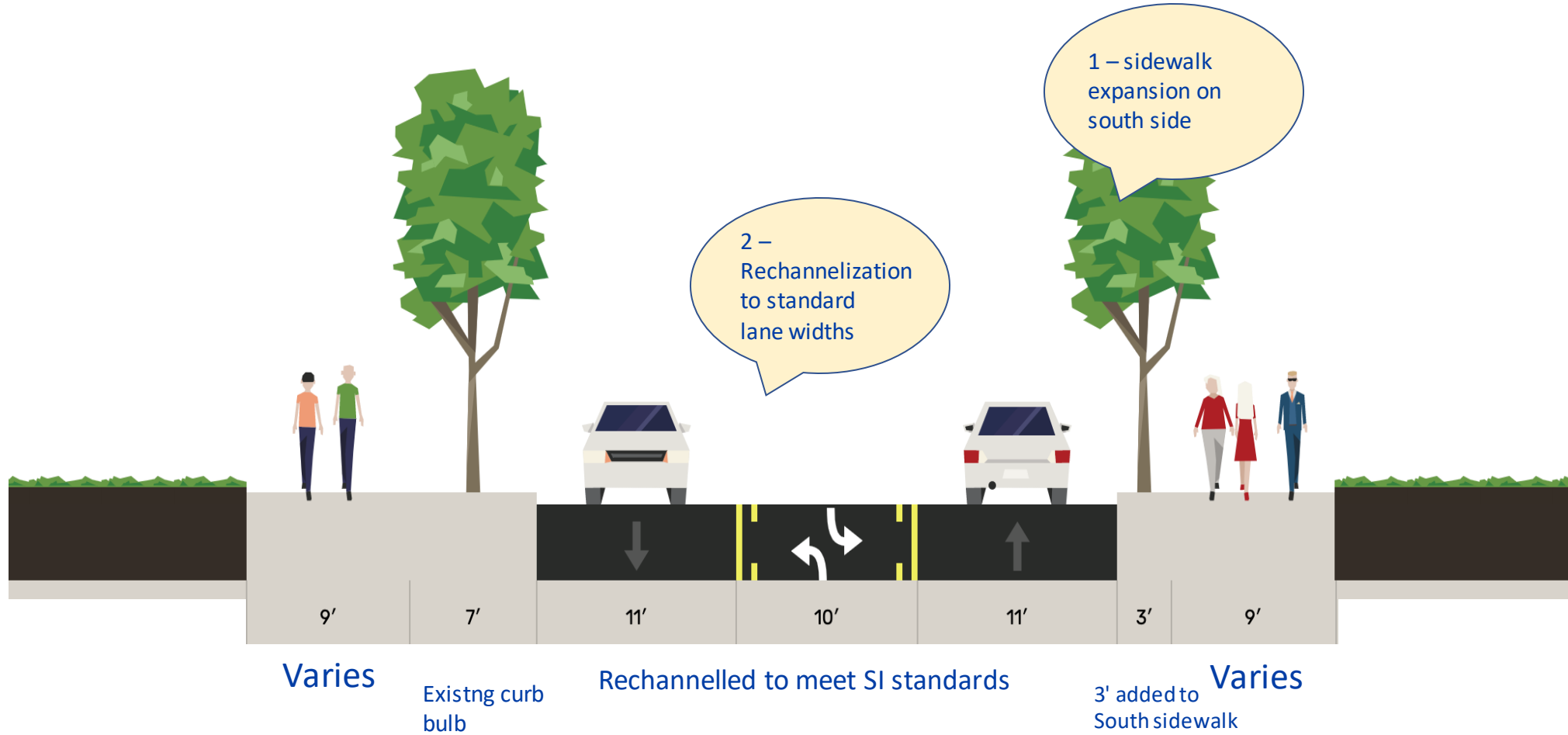
DRAFT Concept – Looking East @ 8th Ave



DRAFT Concept – Looking East mid-block



DRAFT Concept – Looking East @ 7th Ave





Looking West at 8th Ave S



Looking East at 7th Ave S

Notes and Discussion Questions

1. **Concepts are draft – and will be refined depending on cost estimates and budget. The budget for full suite of concepts shared today may exceed the \$500k budget.**
2. **What are we missing? Do these improvements start to address community priorities?**
3. **How would you rank the elements in the shared concepts?**
 - a. **Sidewalk expansion**
 - b. **Bus bulb**
 - c. **Rechanelization to meet SI lane width standards**
 - d. **Conduit for future pedestrian scale lighting on South Side**
4. **Given the bridge closure, how does this project rank in the community's priorities?**
5. **Strategies for engagement with the wider community given Covid.**

Potential Next Steps

Date	Activity/action
May-July	Budget verification and refine scope, community engagement
Aug-Sept	Final Scope and Design Development
Implementation	To be confirmed based on crew availability and delivery mechanism

Questions?

aditi.kambuj@seattle.gov | (206) 555-5555

www.seattle.gov/transportation

