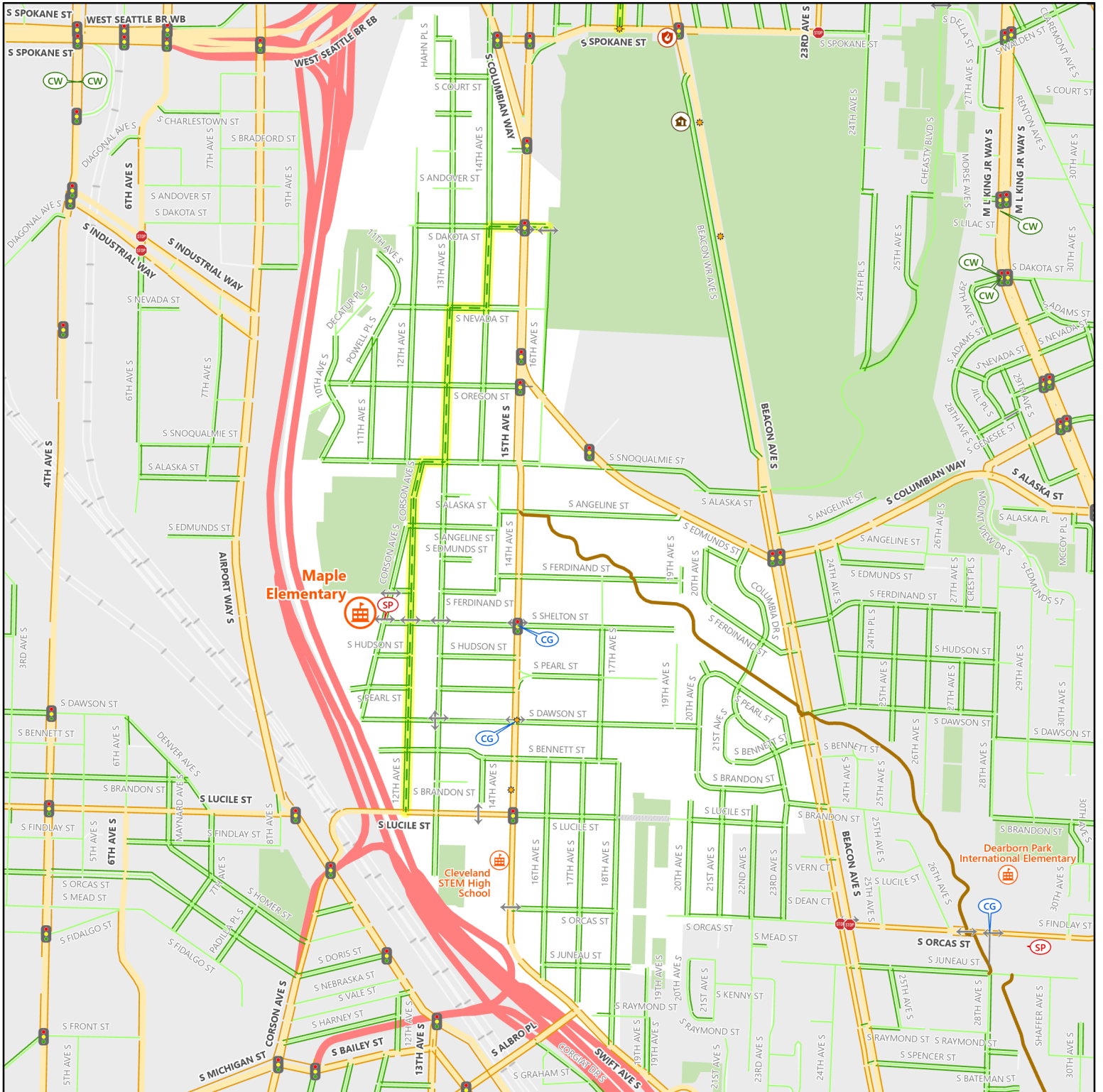
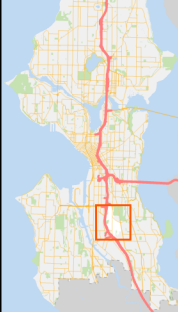


# 2023-24 Safe Routes to School

## Maple Elementary



0 500 1,000 2,000 Feet



- Crossing Guard Assignment\*
- School Patrol Location\*
- Overhead Crosswalk Sign
- Traffic Signal
- All Way Stop Intersection
- Crossing Beacon
- Designated School Crossing
- School
- Community Center

- Fire Station
- Library
- Police Station
- Walkway
- Stairway
- Protected Bike Lane
- Neighborhood Greenway
- Multi Use Path
- School Street

- Stay Healthy Street
- Freeway
- Busy Street (Arterial)
- Sidewalk Exists
- Neighborhood Street
- Sidewalk Exists
- Park
- School Walk Zone

© 2023 City of Seattle. All rights reserved. Produced by the Seattle Department of Transportation. No warranties of any sort, including accuracy, fitness, or merchantability accompany this product.

Coordinate System: Washington State Plane North, WKID - 2926, Datum - NAD83

Author: Seattle ITD, GIS-CADD

\* Crossing guard assignments and school patrol locations are subject to change