

Walking and Biking Improvements Coming to Your Neighborhood!

Project Overview

As part of the Safe Routes to School program, we are building a shared-use path for people walking, biking, rolling, and scooting on 1st Ave NE between NE 130th St and NE 120th St. The new path helps people of all ages and abilities get to James Baldwin Elementary School, Northacres Park, Sound Transit's upcoming Pinehurst Station, and around the neighborhood.

Project elements include:

- New 12-ft wide concrete shared-use path for people walking, biking, rolling, and scooting on the east side of 1st Ave NE from NE 130th St to NE 120th St
- Raised crossing at NE 125th St to keep people walking, biking, rolling, and scooting at path level
- New all-way stop at NE 120th St for safer access to James Baldwin Elementary
- A new crosswalk at NE 128th St for access to Northacres Park and to connect to the NE 128th St Walkway
- Improvements to the 1st Ave NE and NE 130th St intersection to make it easier and safer to get to the Pinehurst Station
- Speed cushions to help calm traffic
- New curb ramps that comply with Americans with Disabilities (ADA) standards (in some locations)
- Public art on the shared-use path designed by students at James Baldwin Elementary

Design Proposal - 1st Ave NE Looking North



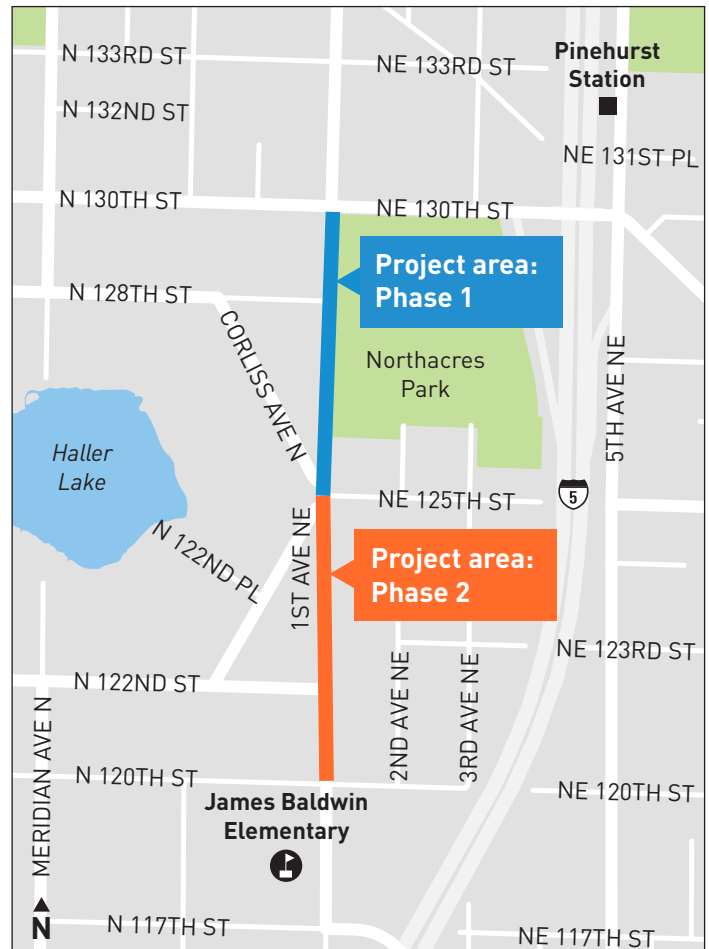
Walking Path and Buffer (existing) Travel Lane (SB) Travel Lane (NB) 12-ft Shared-Use Path (2-Way) and Buffer



Get Involved!

Please scan the QR code to learn more about the project and sign up for email updates.

Project Limits



Schedule

Planning and design: In progress

Construction:

- **Phase 1:** In late 2025, we'll start building the section of the shared-use path between NE 130th St and NE 125th St
- **Phase 2:** In 2026, we'll build the section of the shared-use path between NE 125th St and NE 120th St

PROJECT INFORMATION & CONTACT

Drue Nyenhuis, Outreach Lead
1stAveNEpath@seattle.gov | 206-684-0250
seattle.gov/transportation/1stavenepath



Seattle
Department of
Transportation