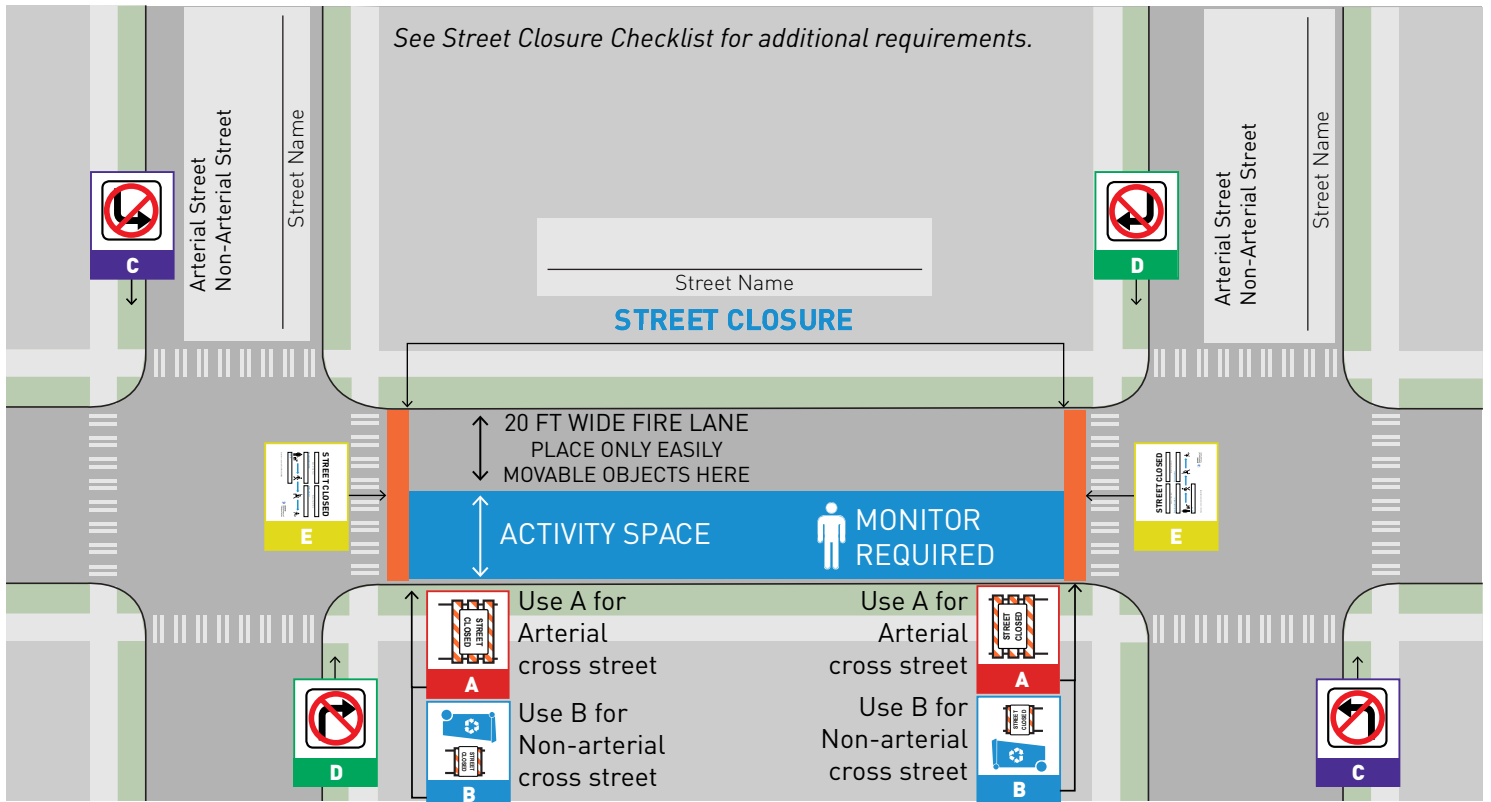


# FULL STREET CLOSURE TEMPLATE



**Use Type III barricades at arterial cross streets**

4 feet min.  
Variable max.

5 feet min.

**STREET CLOSED**  
R11-2  
3 feet x 2 feet

**Type III Barricade**

Street closed sign mounted to a Type III barricade

**A**

**Use Type II barricades at non-arterial cross streets**

2 feet min.

3 feet min.

**STREET CLOSED**  
R11-2  
3 feet x 2 feet

**Type II Barricade**

Street closed sign mounted to a Type II barricade or garbage / recycling bin

**B**

**No Left / Right Turn Sign**

Must be used to help guide traffic at an arterial intersection

R3 - 2  
2 feet x 2 feet

R3 - 1  
2 feet x 2 feet

**C**

**D**

**Informational Sign**

Must be placed in the middle of the center of the street at the ends of the block

**STREET CLOSED**

3 feet x 2 feet

**E**