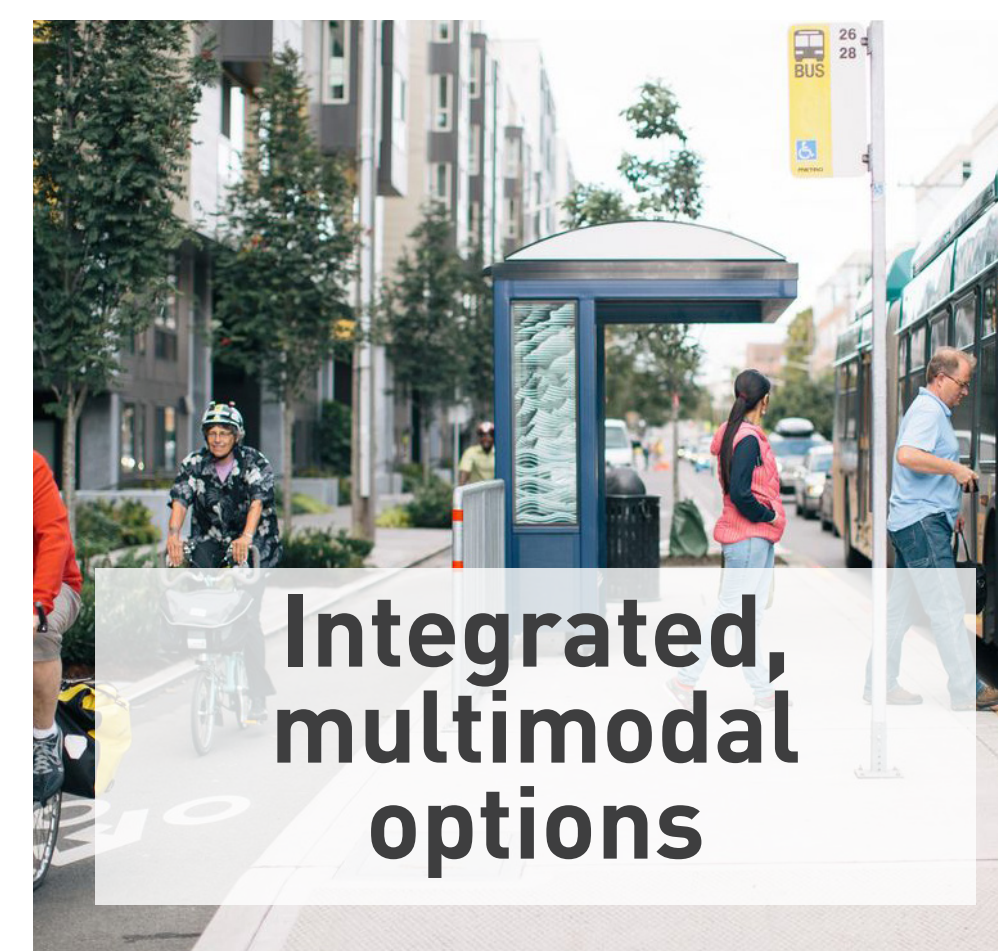


# BUILD ON COMMUNITY VISION

Align mobility improvement implementation with community priorities and vision

## What does this mean to you?

*Here's what we heard from you in October:*



## How can we measure it?

*Put a dot next to the 2 measures you think are most important (or add your own with a sticky note):*



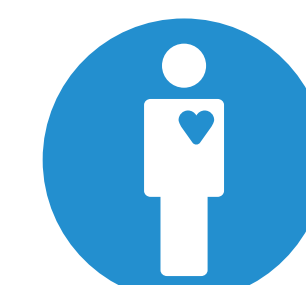
**Comes from existing community or city plan**



**Reduces greenhouse gas emissions**



**Supports coordinated implementation**



**Improves community health**



**Leverages other city and community investments**



***Your idea here:***

## Building an Evaluation Framework

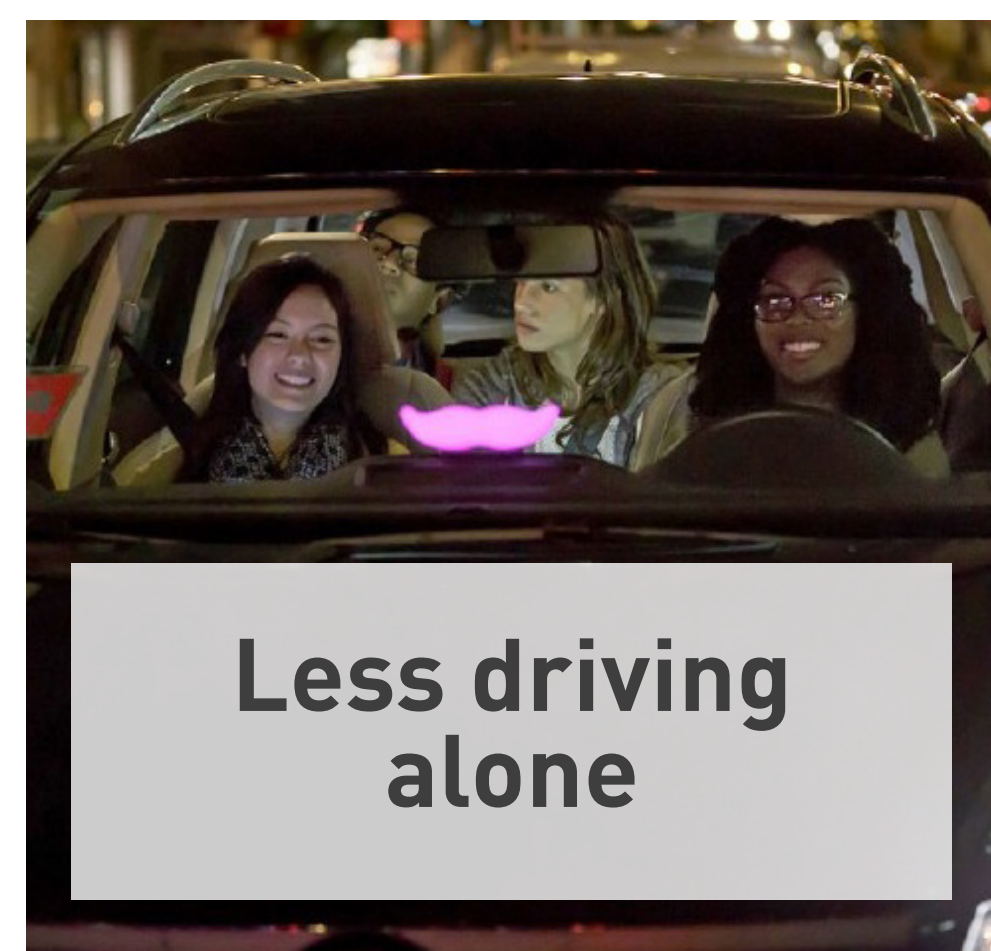
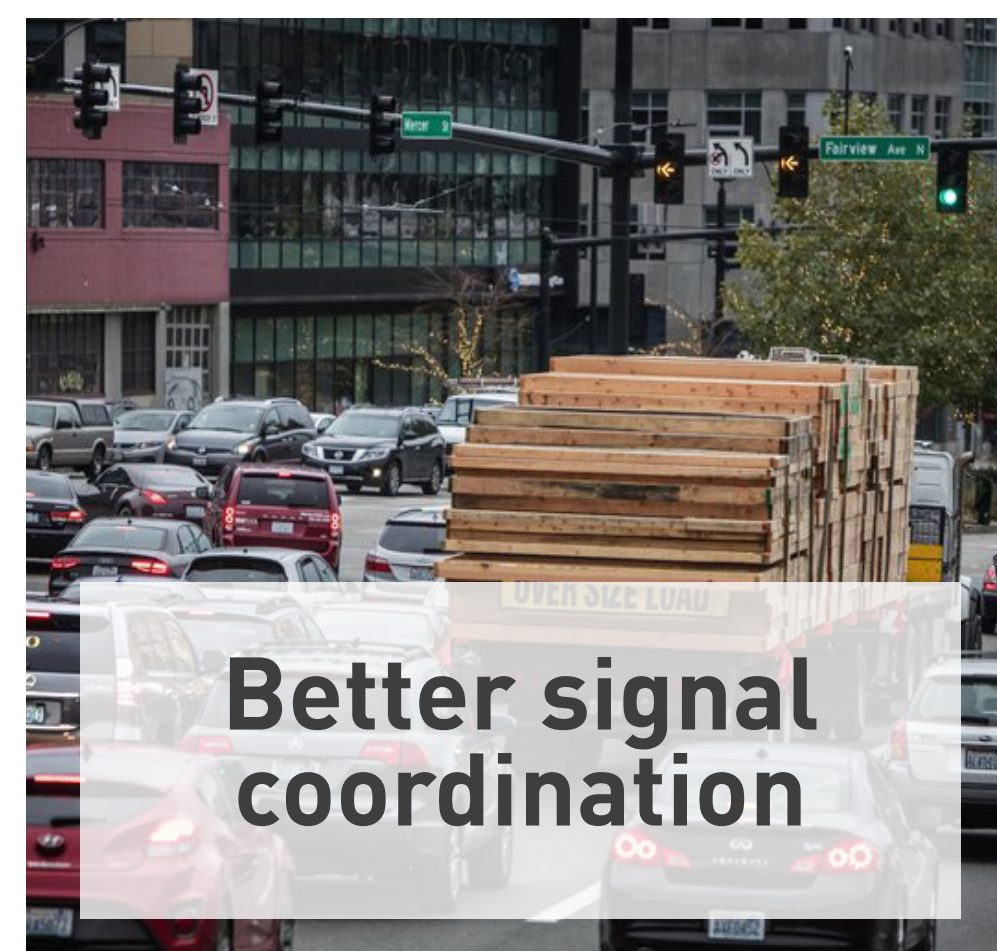


# PRIORITIZE SUSTAINABLE TRANSPORTATION OPTIONS

Increase accessibility and convenience for people walking, biking, and taking transit to support growth and accommodate Seattle Center events

## What does this mean to you?

*Here's what we heard from you in October:*

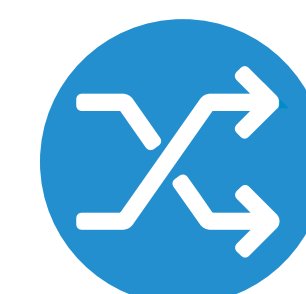


## How can we measure it?

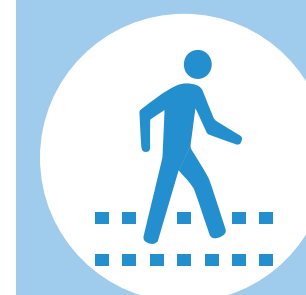
*Put a dot next to the 2 measures you think are most important (or add your own with a sticky note):*



Improves accessibility and convenience for people walking, biking, and taking transit



Enhances east-west travel



Prioritizes pedestrian crossings in high pedestrian volume areas



Makes transit faster and more reliable



Reduces single-occupancy vehicle trips



*Your idea here:*

## Building an Evaluation Framework

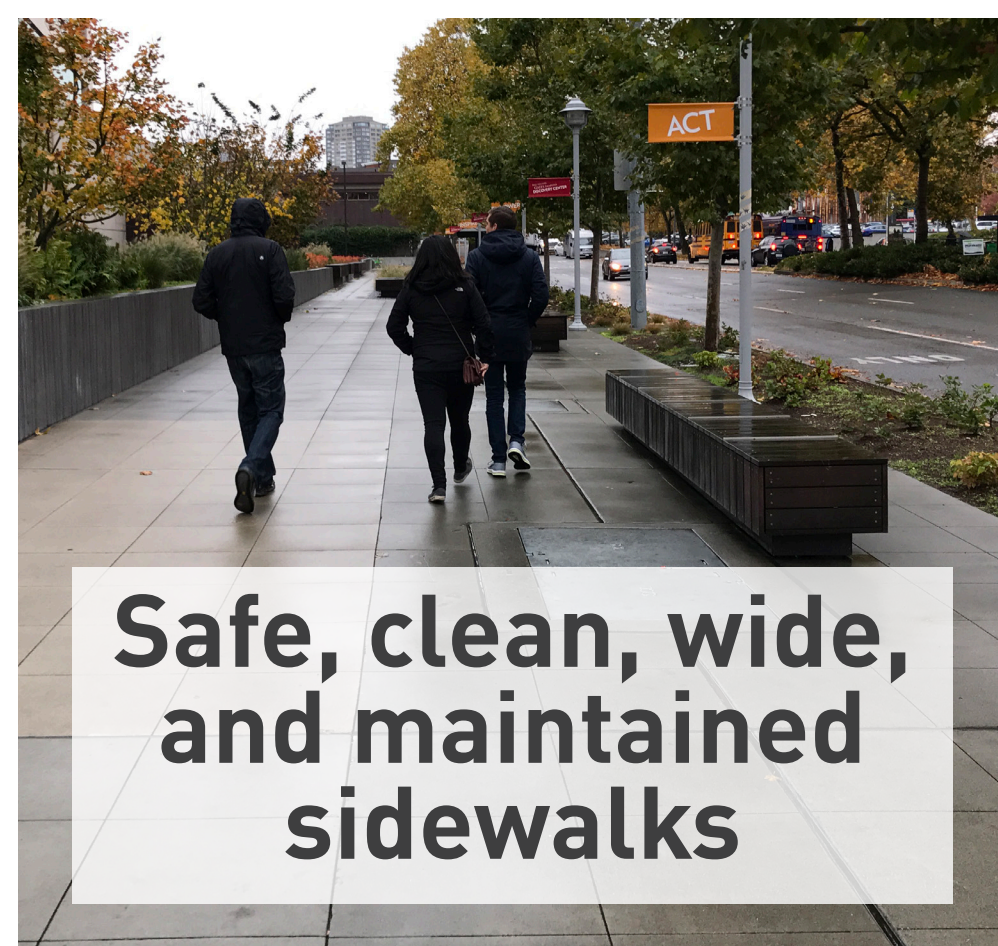


# ENHANCE THE PUBLIC REALM

Enhance the public realm to create attractive places to walk, bike, ride transit, and play in North Downtown

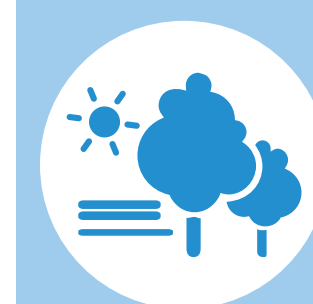
## What does this mean to you?

*Here's what we heard from you in October:*



## How can we measure it?

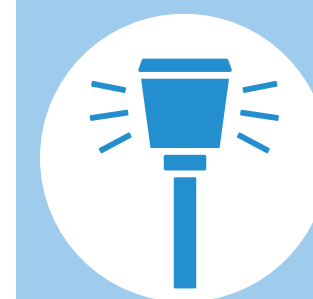
*Put a dot next to the 2 measures you think are most important (or add your own with a sticky note):*



Provides quality streetscape and public space



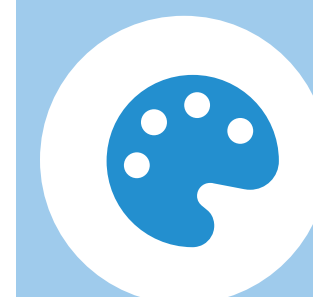
Creates a place that is accessible, inviting, and enjoyable for residents and visitors



Enhances the experience of the street at all times of day, especially at night



Adds landscaping or green features



Includes art or creative and playful elements



*Your idea here:*

## Building an Evaluation Framework



# IMPROVE CONNECTIVITY

Increase connectivity between North Downtown and adjacent neighborhoods

## What does this mean to you?

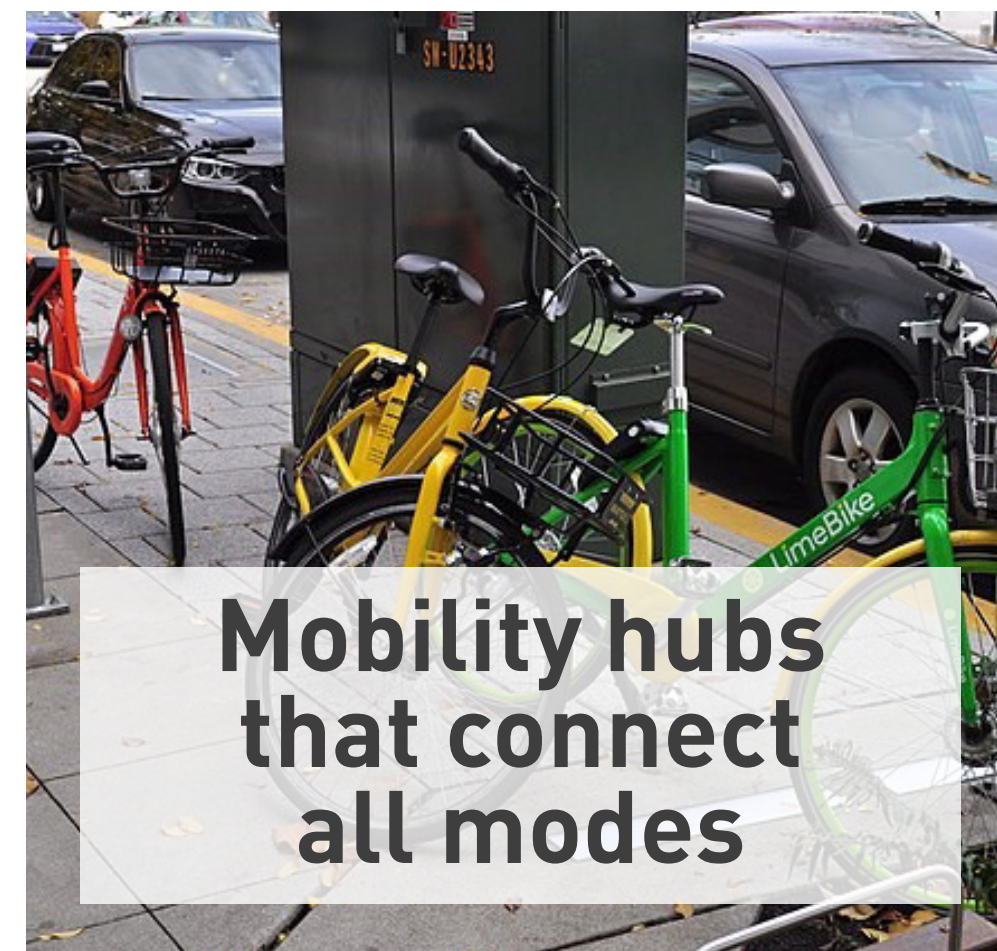
*Here's what we heard from you in October:*



**Pedestrian connections between neighborhoods**



**Basic Bike Network connections**



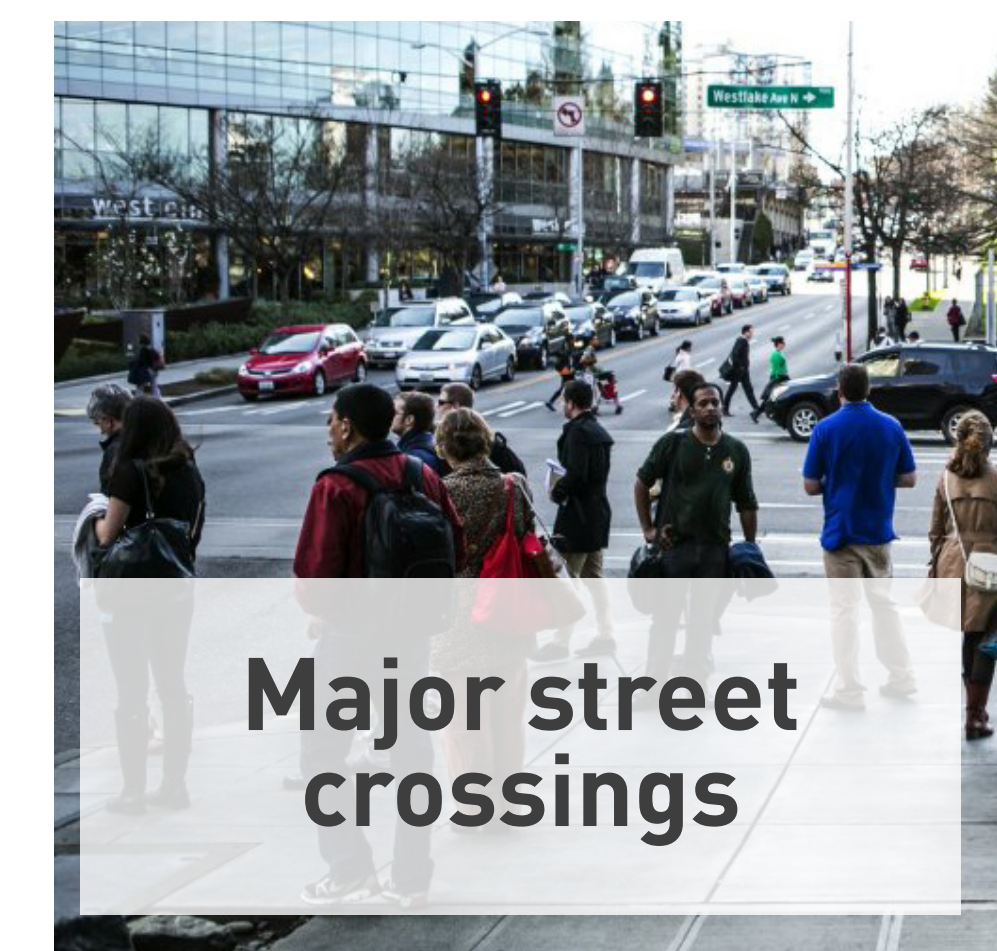
**Mobility hubs that connect all modes**



**East-west transit service**



**Comprehensive wayfinding**



**Major street crossings**

## How can we measure it?

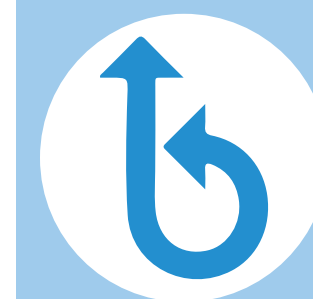
*Put a dot next to the 2 measures you think are most important (or add your own with a sticky note):*



**Creates hubs that are great places for people and functional centers to connect between modes**



**Provides wayfinding and information that makes navigating North Downtown easy and accessible**



**Improves freight connections within North Downtown or to the region**



**Enhances walking and biking connections to create a complete network**



**Improves transfers between transit routes**



***Your idea here:***

## Building an Evaluation Framework

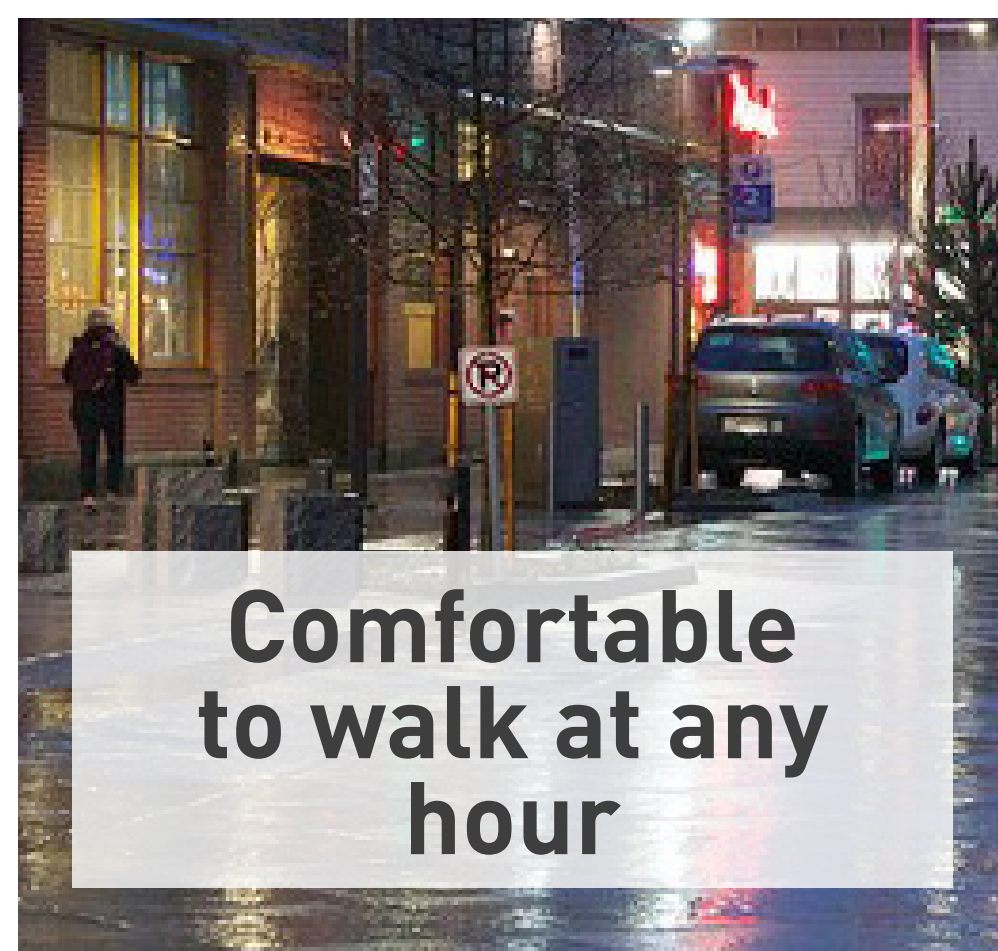


# INCREASE SAFETY

Enable safe access for all, regardless of age, ability, or transportation mode choice

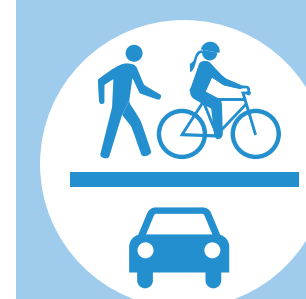
## What does this mean to you?

*Here's what we heard from you in October:*



## How can we measure it?

*Put a dot next to the 2 measures you think are most important (or add your own with a sticky note):*



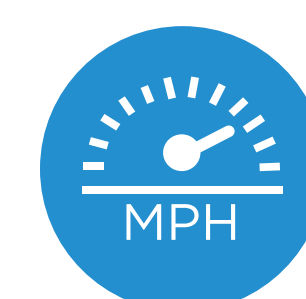
Protects the most vulnerable travelers by separating people walking and biking from people driving cars and trucks



Addresses a high bicycle, pedestrian, or vehicle crash location



Adds lighting to key pedestrian areas



Reduces vehicle speeds



Improves pedestrian and bicycle visibility to people driving



*Your idea here:*

## Building an Evaluation Framework