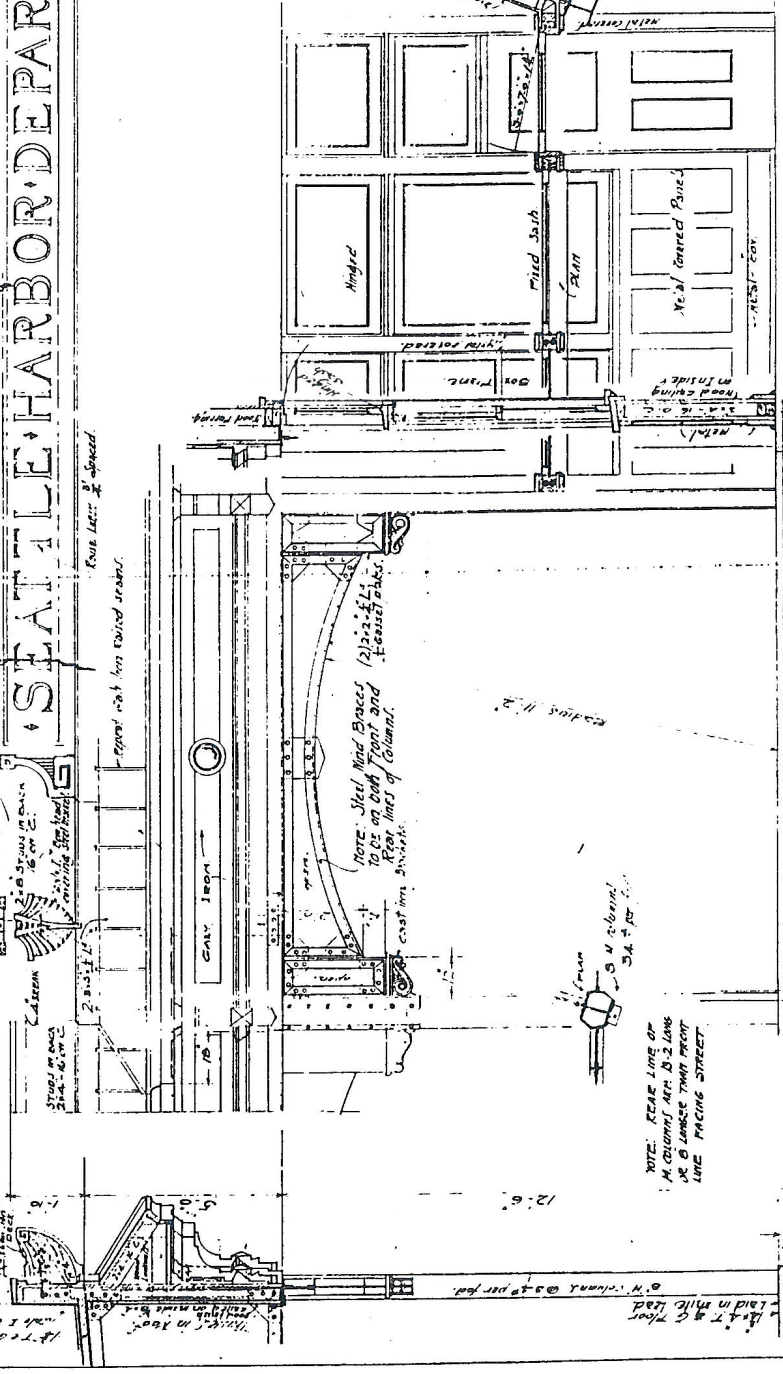
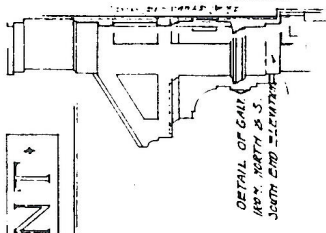
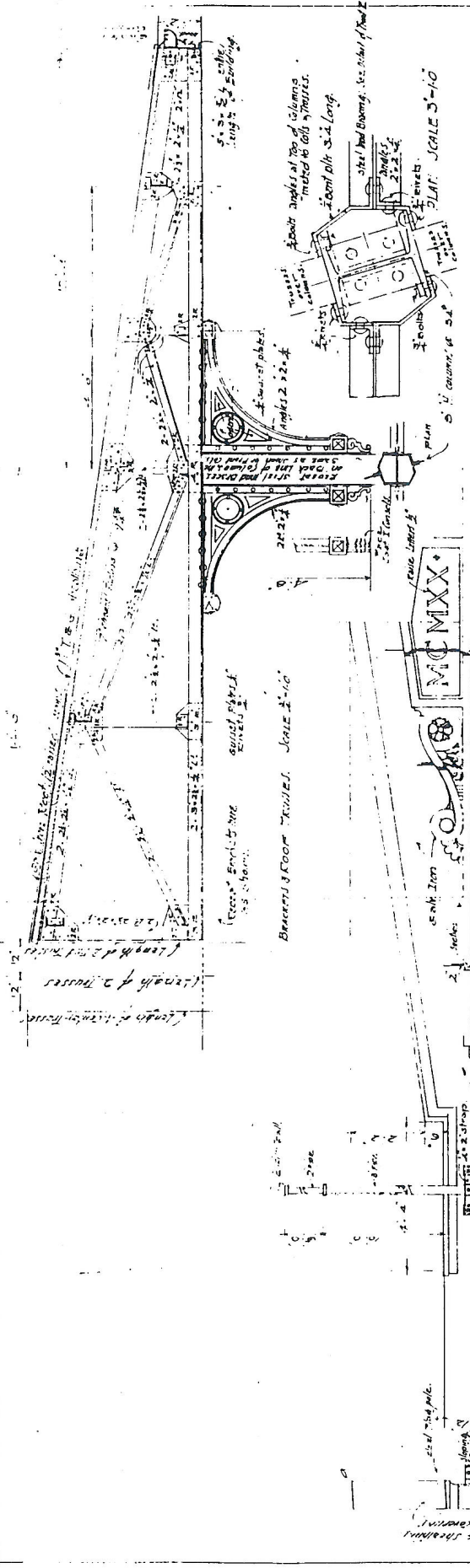


SEATTLE HARBOR DEPARTMENT

MCMMXX



DEPARTMENT OF BUILDINGS
CITY OF SEATTLE
JAMES A. JAMULON JUDT
CITY ARCHITECT
HARBOR DOCK & SHELTER PORCH
AT WASHINGTON ST. SEATTLE, WASH.
SHEET NO. 2
APPROVED BY THE BOARD OF PUBLIC WORKS
SEATTLE, WASH. MAY 17, 1900.

APPROVED BY
D. B. ALLEN
CITY ENGINEER

SECTION. ENCLOSURE AT OFFICERS' ROOM.
SCALE 3/8\"/>

NOTE: REAR LINE OF
COLUMN, 18\"/>

1/8\"/>

1/8\"/>

