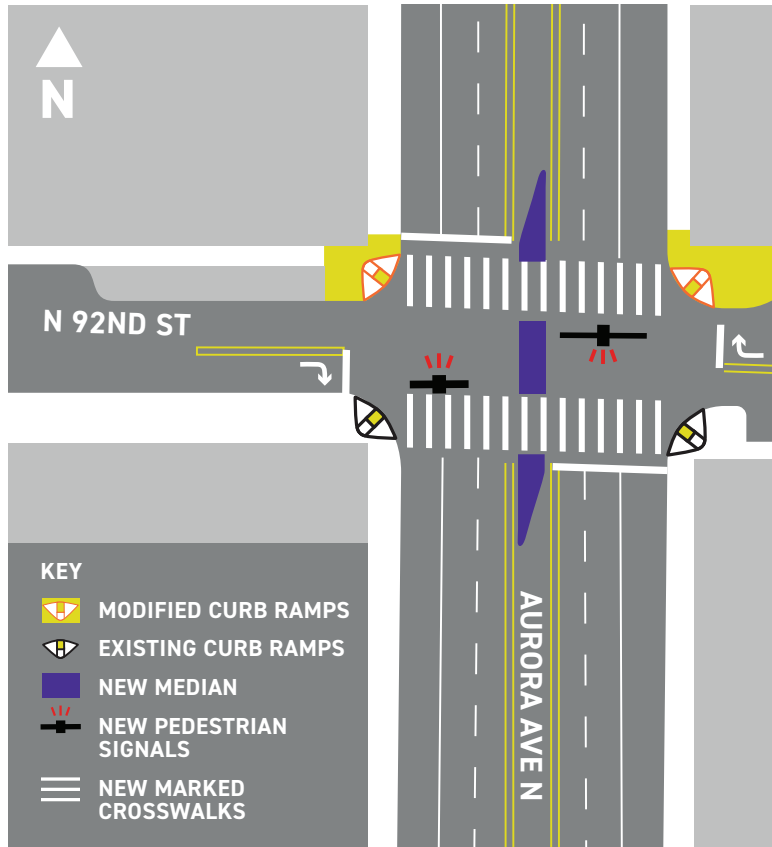


# Construction of Aurora Ave N and N 92nd pedestrian signal starting in July



The project will:

- Add a new pedestrian signal on Aurora Ave N at N 92nd St for people walking and biking
- Modify curb ramps as needed
- Add a median island on Aurora Ave N at N 92nd St to help reduce cut-through traffic and encourage walking and biking to school
- Support the planned Safe Routes to School connection between the existing neighborhood greenway on Fremont Ave N and the new school complex east of Aurora Ave N

This project is funded through SDOT's Neighborhood Street Fund (NSF).

## DO YOU NEED THIS IN ANOTHER FORMAT?

- If you need this information translated, please call (206) 733-9361.
- Si necesita traducir esta información al español, llame al (206) 733-9361.



**Seattle**  
Department of  
Transportation

P.O. Box 34996 | Seattle, WA 98124-4996

PRSR STD  
US Postage  
PAID  
Seattle, WA  
Permit No. 2871

## Aurora Ave N and N 92nd Pedestrian Signal



### CONSTRUCTION STARTING IN JULY

We're adding a new pedestrian signal and a median island on Aurora Ave N at N 92nd St to improve safety for everyone.

#### WHAT TO EXPECT

- Parking and vehicle lane restrictions
- Some sidewalk work may require pedestrian detours
- Normal work hours from 7 AM to 5 PM, Monday through Friday with some night and weekend work
- Crews may be on-site prior to July conducting utility work in preparation for construction

The goal is to have the signal operational in September for the start of school. This anticipated schedule may change. Please sign up for the project email list on our webpage to receive regular updates throughout construction.

**WE WANT TO KEEP YOU UP TO DATE!** Sign up for email updates on our webpage:

[www.seattle.gov/transportation/NSFAuroraCorridor.htm](http://www.seattle.gov/transportation/NSFAuroraCorridor.htm)  
[NSFAuroraCorridor@seattle.gov](mailto:NSFAuroraCorridor@seattle.gov) | (206) 733-9361  
NSF Outreach Lead: Kristin Anderson

