



35th Avenue SW
Road Safety Corridor

Issue Identification Meetings
Project Manager Jim Curtin
October 22 and 28, 2014

SDOT's mission & vision

Mission: delivering a first-rate transportation system for Seattle.



Vision: a vibrant Seattle with connected people, places, and products.

SDOT's values



Presentation overview

- Project background
- Project area
- Existing conditions/data
- General Q & A
- Feedback session



Background

- Safety improvements requested by local community on several occasions
- Data indicates collision issues along the 35th Avenue SW corridor



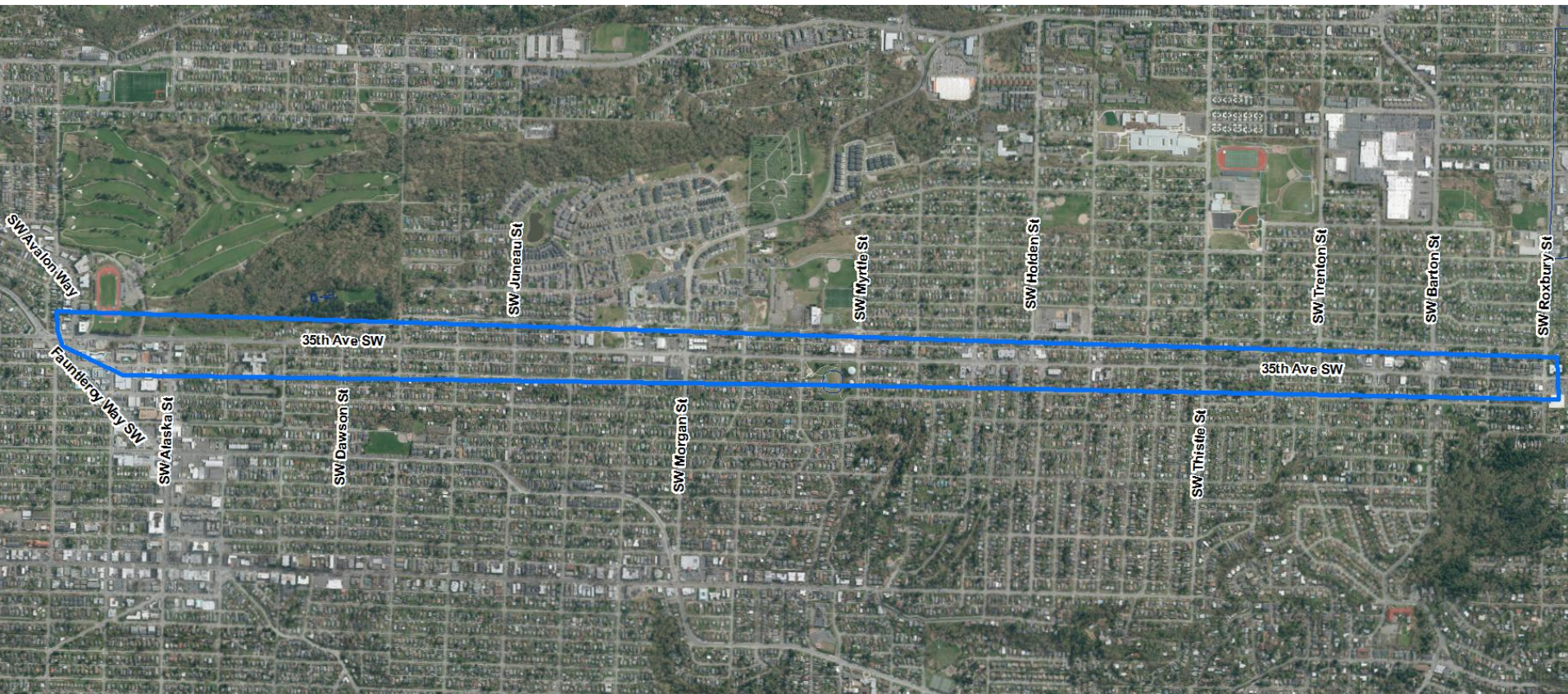
Background

- Goal: improve safety for all
- Data-driven education, enforcement, and engineering efforts
- Short and long-term engineering solutions
- Opportunity for public input
- Implementation 2015 and beyond



Project area

35th Avenue SW between SW Avalon Way and SW Roxbury Street



Current street design

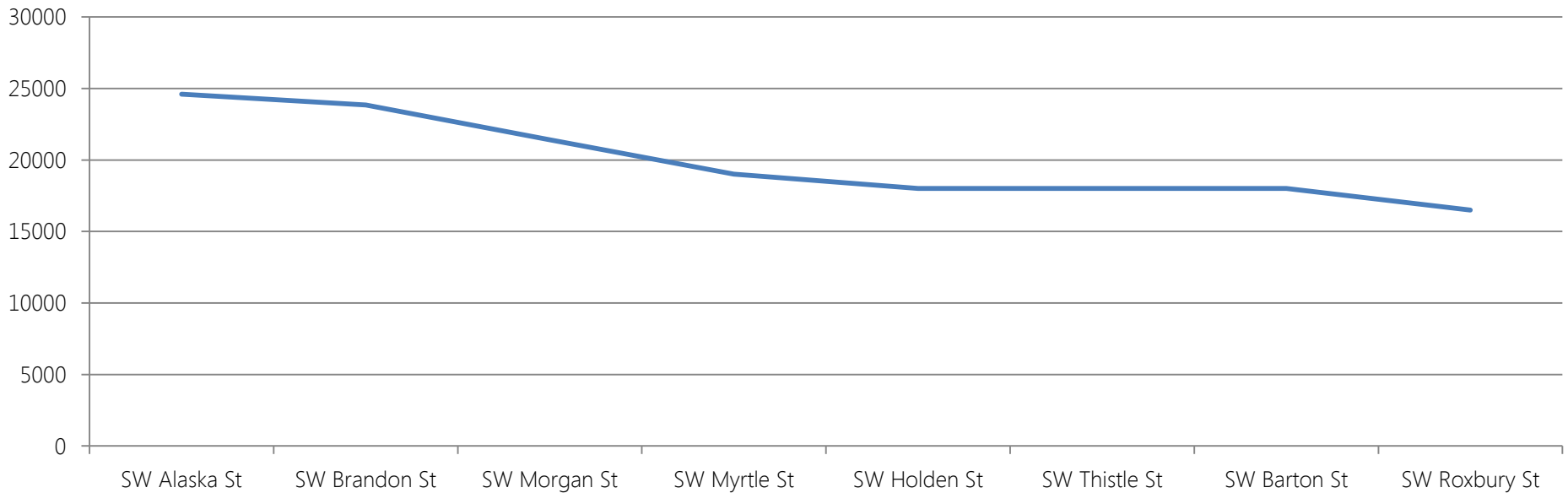
35th Avenue SW

- Principal arterial
- 4 to 5 lane street
- 55 feet wide
- Served by multiple transit routes



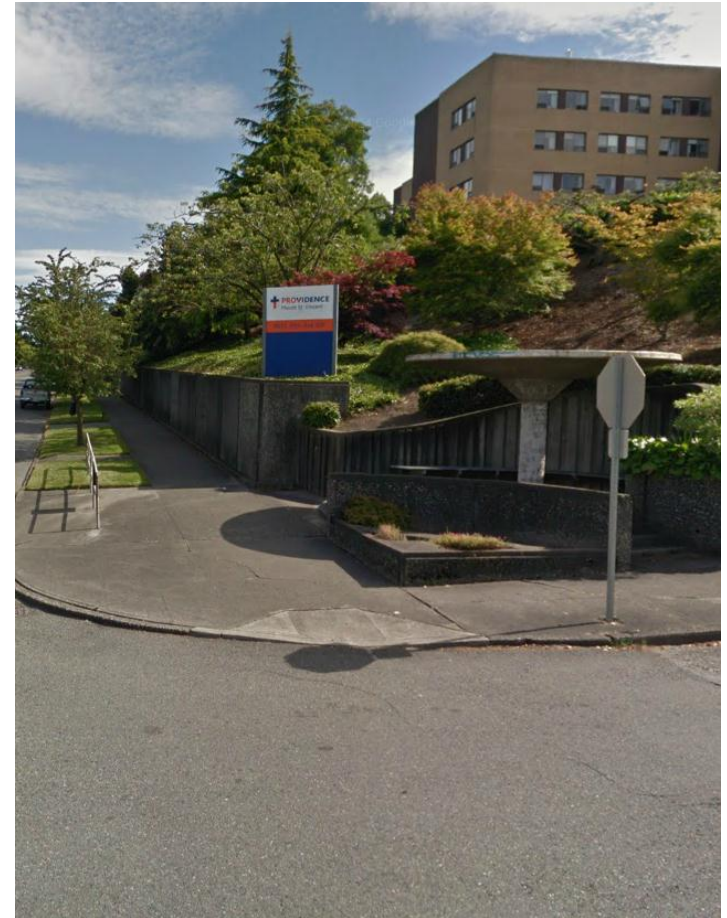
Average daily traffic

16,500 AWDT at Roxbury; 24,600 AWDT at Alaska



What's along the corridor

- 488 parcels
 - 73% single family residential (359)
 - 11% apartment, condo, townhouse (55)
 - 10% commercial/industrial (48)
- 4 churches or religious service centers
- 3 schools within two blocks
- 2 libraries, parks and community centers
- 2 daycare centers
- Retirement/nursing homes, medical services



Recent speed studies

- Posted speed limit 35 mph
- 38.5 mph at SW Brandon St
- 40.9 mph at SW Willow St
- 36.5 at SW Roxbury St



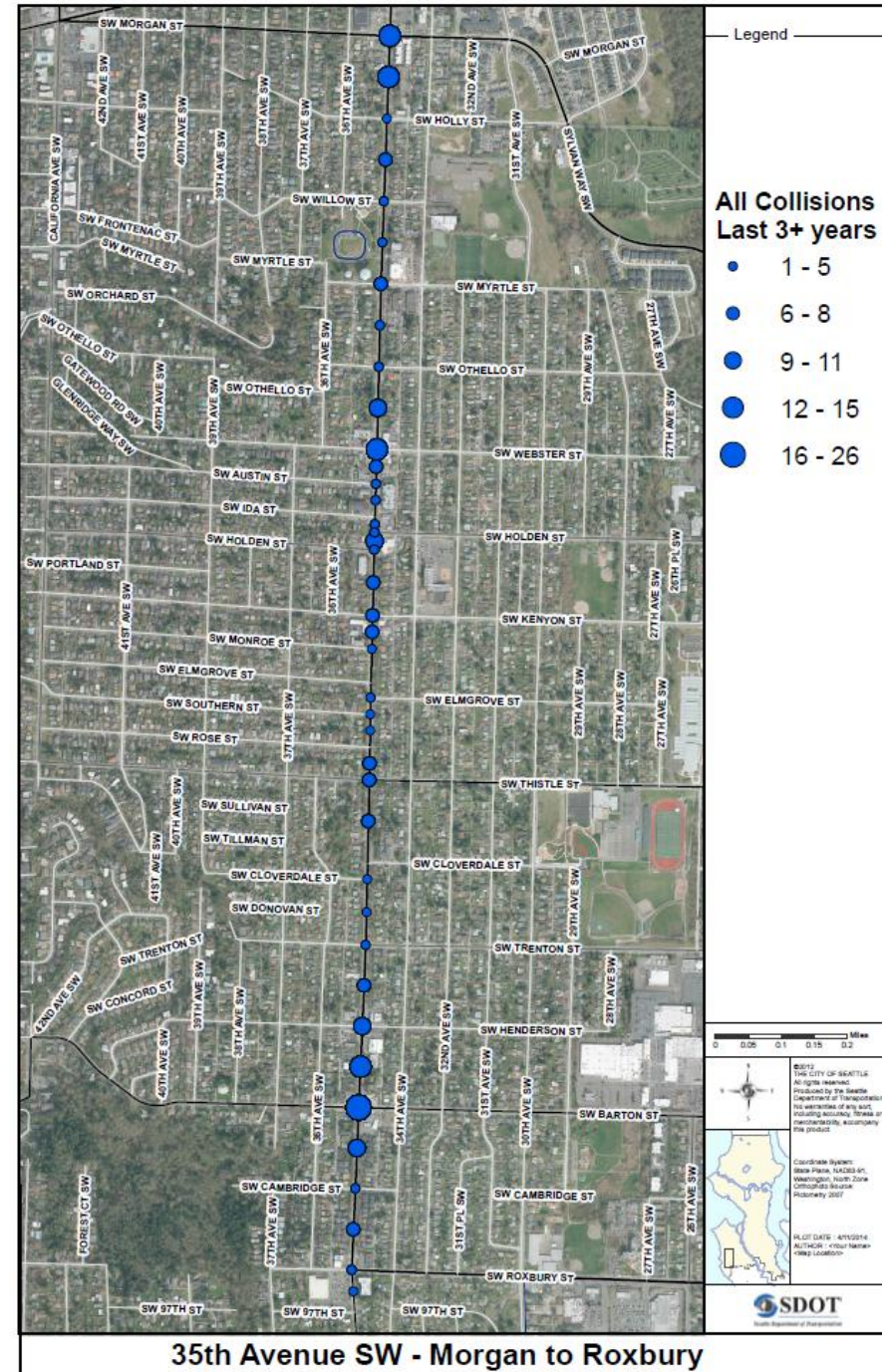
Collision data

Last 3 plus years

- 294 total collisions
- 128 injuries
- 2 fatalities

Last 10 years

- 1065 total collisions
- 412 injuries
- 5 fatalities



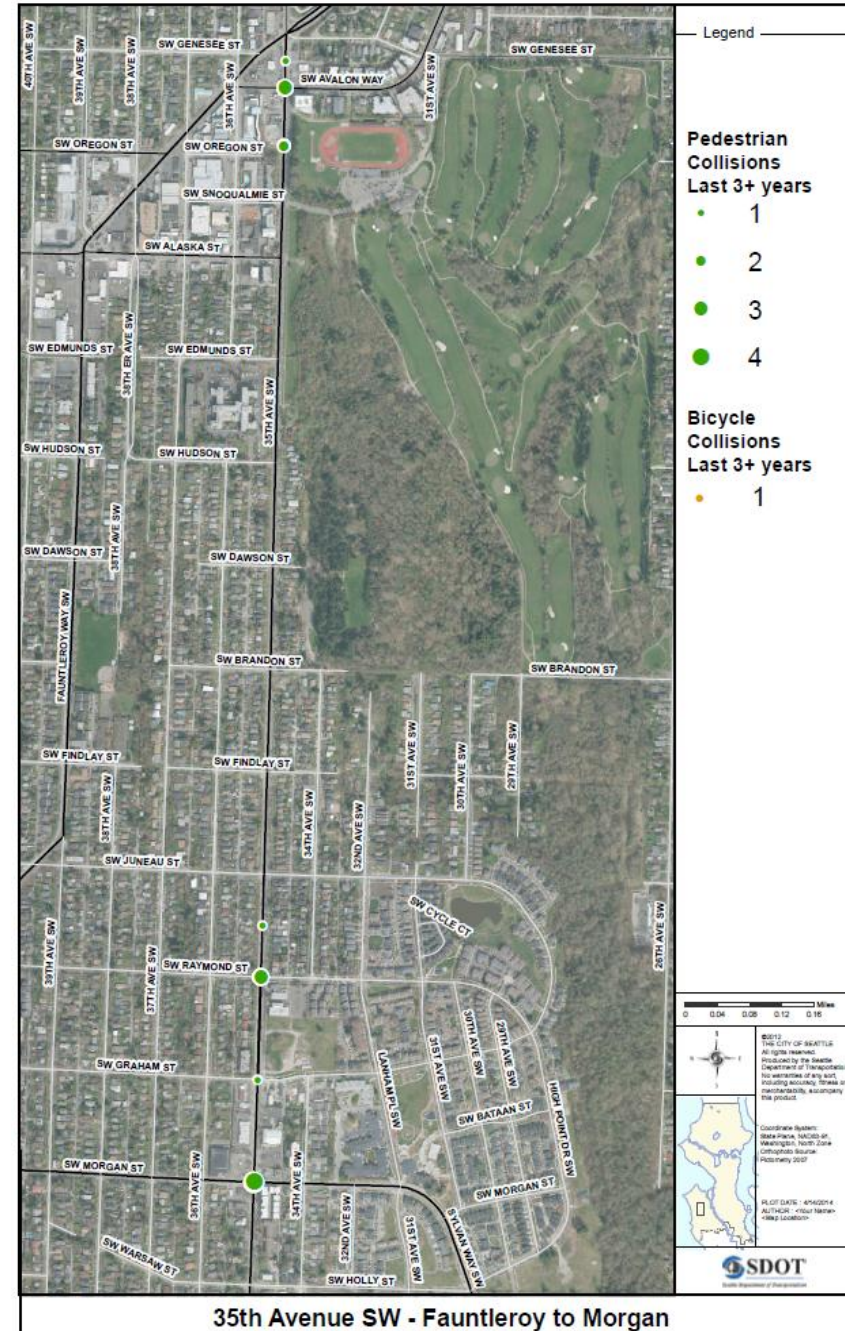
Collision data

Pedestrian and bicycle collisions last 3 plus years

- 15 pedestrian-vehicle
- 1 bicycle-vehicle

Pedestrian and bicycle collisions last 10 years

- 40 pedestrian-vehicle
- 8 bicycle-vehicle
- 4 of 5 fatalities were pedestrians or bicyclists



Behavioral issues and enforcement

- Distraction top contributing cause of crashes on 35th
- Other issues
 - Speeding
 - Impairment
 - Failure to grant ROW
- Partnership with SPD



Next steps

October 28 3:30 PM to 5 PM	Issue Identification Meeting 2 Southwest Library
November through January	Outreach and conceptual designs
February 2015	Design Alternatives Review Meetings
March/April 2015	Final determination and outreach meeting
Summer 2015	Implementation begins

Feedback session

- 7 – 8 PM
- Review data
- Share experiences and provide feedback
- Potential topics
 - Parking
 - Channelization
 - Bicycle facilities
 - Crosswalks/sidewalks
 - Traffic signals
 - Transit
 - Pavement
 - Traffic calming
 - Enforcement



Questions?

jim.curtin@seattle.gov | (206) 684-8874

<http://www.seattle.gov/transportation/35thSW.htm>

<http://www.seattle.gov/transportation>

