

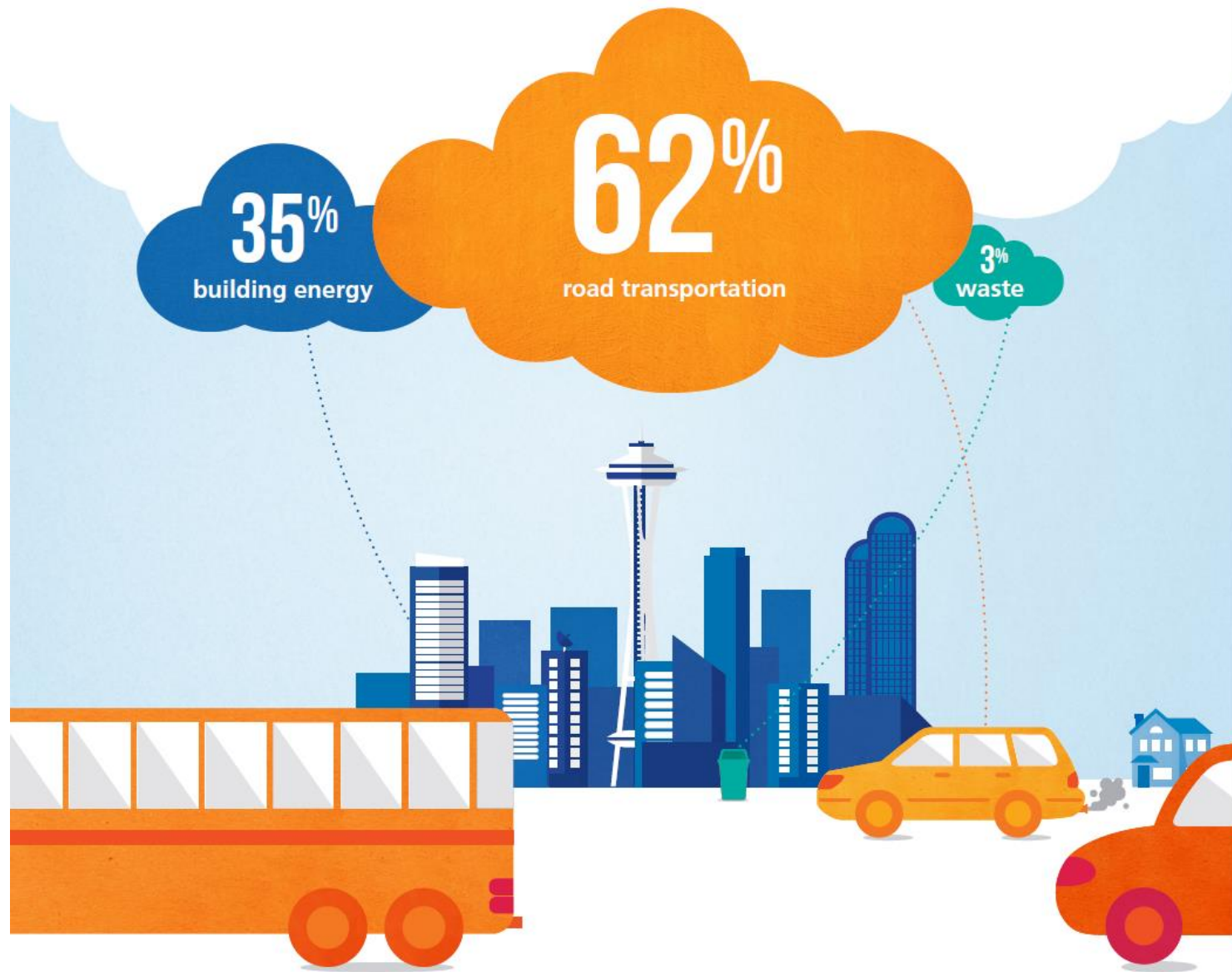
Seattle's Transportation Electrification Blueprint

Andrea Pratt, Climate & Transportation Policy Advisor, OSE

3/16/2021



City of Seattle



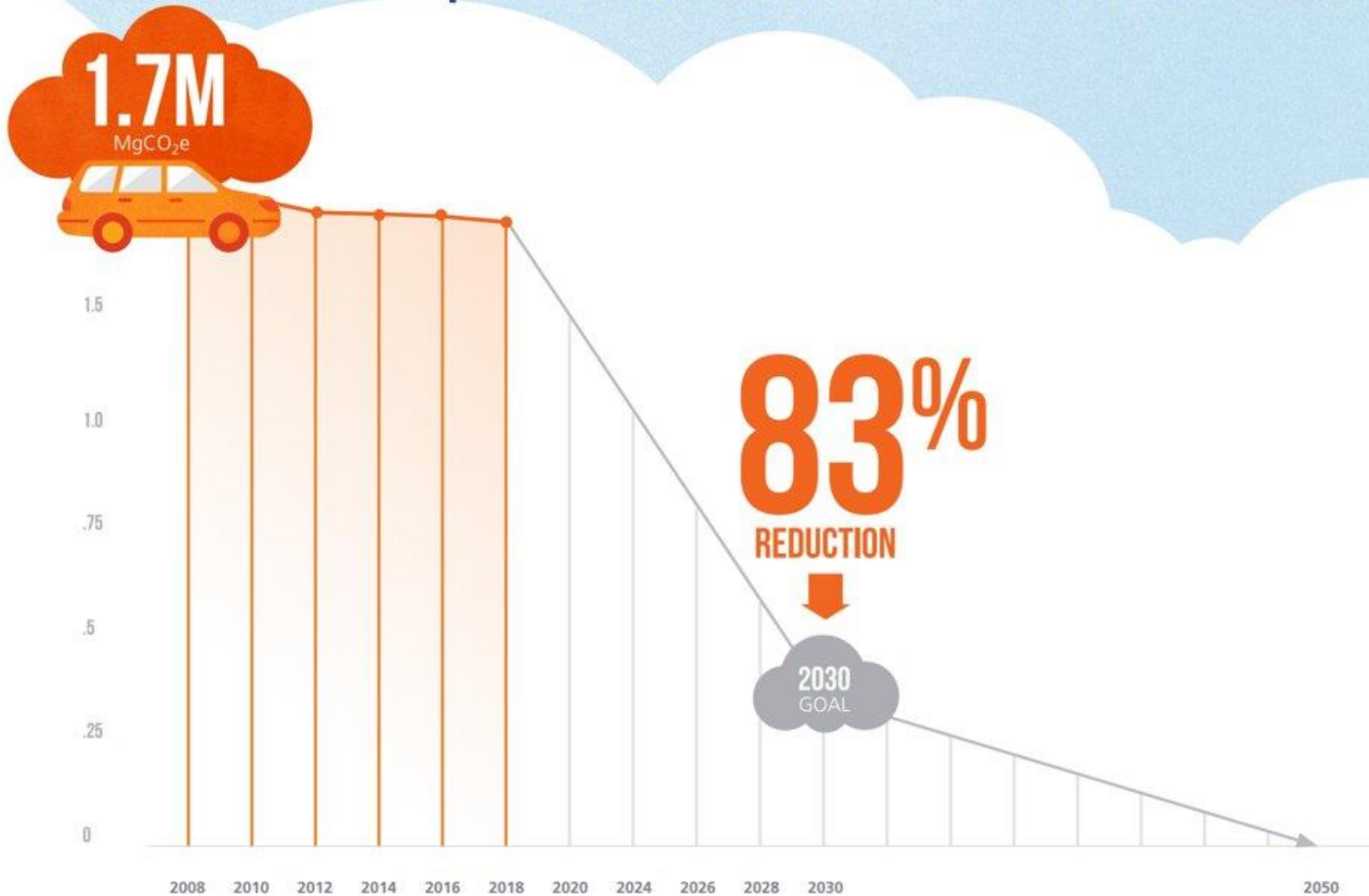
Andrea Pratt, Climate & Transportation Policy Advisor, OSE

3/16/2021



City of Seattle

Transportation Emissions Reductions Needed



Seattle City Light Electricity

2019 POWER MIX



● HYDRO	84%
● UNSPECIFIED*	6%
● NUCLEAR**	5%
● WIND	4%
● BIOGAS.....	1%
<hr/>	
TOTAL	100%

**City Light does not have coal or natural gas resources in its power supply portfolio. It does make market purchases to balance or match its loads and resources. These purchases, along with market purchases made by Bonneville Power Administration (BPA), may incidentally include coal or natural gas resources, which are assigned to the utility. Any emissions associated with unspecified market purchases are offset through our greenhouse gas (GHG) neutrality policy.*

***This fuel represents a portion of the power purchased from BPA.*

TE is Critical to Meet Climate Goals

Path to 2050 Decarbonization

- **VMT↓ + TE = Most benefit**
- Even with *55% reduction in VMT*, 98% of on-road vehicles must be electric to meet Seattle's 2050 climate goals*
- Grid is carbon neutral

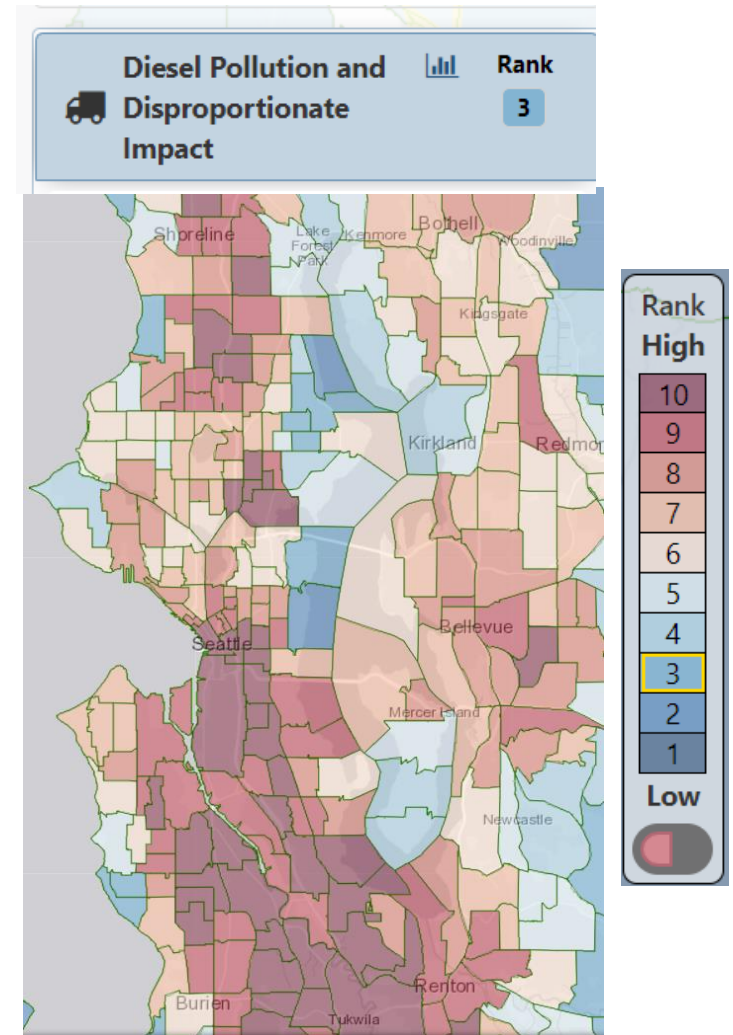
*[Hovland Consulting Report 2020](#)



TE is Critical to Climate Justice

- By targeting investments in impacted areas, we can reduce diesel pollution and improve public health
- Electrification of Port and commercial diesel fleets are key opportunities

[Source: WA health disparities map](#)



TE in Climate Justice Recovery Effort

- Expanding access to electrified transit and e-mobility
- Creating wealth in BIPOC communities
- Reducing carbon and tailpipe emissions to combat climate change and improve human health
- Targeted investments in priority areas



TE is Critical to Health

WA Health Impacts Avoided under 2050 Scenario:

- \$1.4T saved in avoided health costs
- 124 premature deaths
- 1,970 asthma attacks
- ~9,000 missed work days



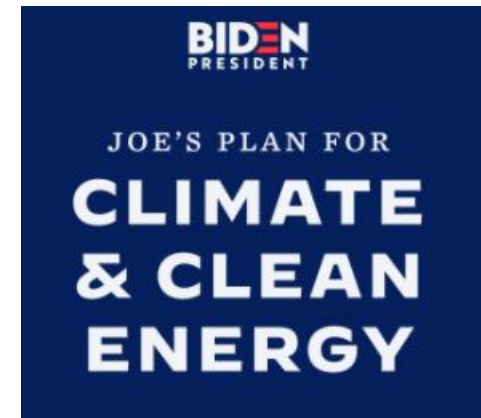
TE Investments Create Clean Jobs

- NREL study – EV market creates 100K net jobs
- LACI TEP \$150B stimulus proposal – 2.3M new jobs
- Biden Clean Energy Plan - \$2T invested & 10M new jobs



National Economic Value Assessment of Plug-In Electric Vehicles

Volume I



TE is a Citywide Effort



Source: Seattle City Light

Andrea Pratt, Climate & Transportation Policy Advisor, OSE

3/16/2021



City of Seattle

Seattle's Clean Transportation Electrification Blueprint

Electrifying Our Transportation System



Andrea Pratt, Climate & Transportation Policy Advisor, OSE

3/16/2021



City of Seattle

2030 North Star Goals

- 100% of shared mobility is electric
- 90% of personal trips are zero emission
- **30% of goods delivery is zero emissions**
- 100% of City fleet is fossil fuel free (*EO 2018-02*)
- 1+ 'Green & Healthy' Streets (*C40 FFF Streets*)
- Infrastructure required to stay ahead of TE adoption is installed and operational



Collaboration Opportunities

- Partnerships/pilots for zero emission deliveries
- Inform planning for zero emission zone (aka 'Green & Healthy Streets')
- Help City better understand freight and goods movement – routes, miles traveled, depot locations
- Inform incentive design and utility programs



Contact Information

Andrea Pratt

Climate & Transportation Policy Advisor

Office of Sustainability & Environment

andrea.pratt@seattle.gov

