

WEST SEATTLE BRIDGE PROGRAM

WEST MARGINAL WAY SW IMPROVEMENTS

Join our Virtual Open House:

Thursday, February 18
6:00-7:30 pm.

www.seattle.gov/transportation/West-Marginal-Way-SW-Improvements

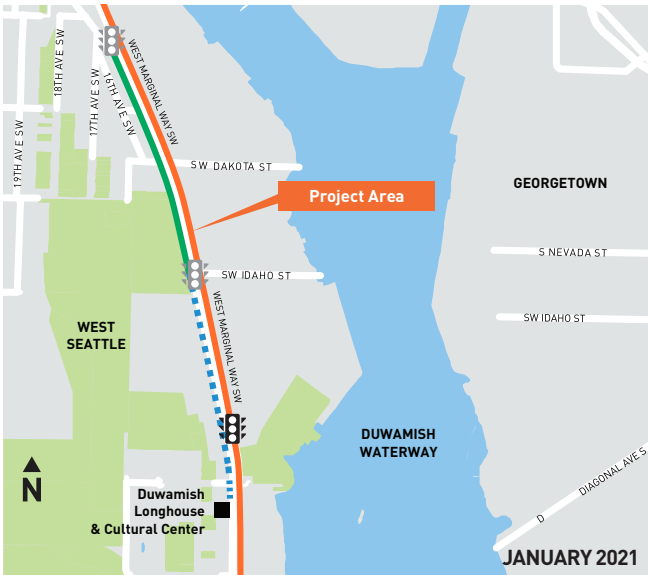
Need help? Email or call us at:

206-400-7511

WestSeattleBridge@seattle.gov

Seattle Department of Transportation
P.O. Box 34996
Seattle, WA 98124

PRSR STD
U.S. POSTAGE
PAID
SEATTLE, WA
PERMIT NO. 2871



WEST MARGINAL WAY SW IMPROVEMENTS

Improvements and changes are coming to West Marginal Way SW

To learn more and share your thoughts, join us at our Virtual Open House on Thursday, February 18, 6:00-7:30pm www.seattle.gov/transportation/West-Marginal-Way-SW-Improvements

To request an interpreter or accommodations for persons with disabilities at the Virtual Open House, please contact us at 206-400-7511 or WestSeattleBridge@seattle.gov 3 days prior to the meeting date.

Se aproximan mejoras y cambios a West Marginal Way SW.

Para obtener más información y compartir su opinión acompañenos a la Exhibición virtual que tendremos el jueves 18 de febrero de 6 a 7:30 pm en www.seattle.gov/transportation/West-Marginal-Way-SW-Improvements

Para solicitar adaptaciones para personas con discapacidades o los servicios de un intérprete, llámenos 3 días antes de la fecha de la reunión al 206-400-7511 o envíenos un mensaje a WestSeattleBridge@seattle.gov

West Marginal Way SW 에 발전과 변화가 있을 것입니다.

더 알고 싶은 점이나 의견이 있으시면, 2월 18일 목요일, 오후 6-7:30 사이에 www.seattle.gov/transportation/West-Marginal-Way-SW-Improvements 에서 열리는 가상 오픈 하우스에 참석하시기 바랍니다.

가상 오픈 하우스에서 통역사 또는 장애인에게 제공되는 편의를 요청하시려면, 회의 3일 전에 206-400-7511로 전화 주시거나 WestSeattleBridge@seattle.gov 로 이메일 주시기 바랍니다.

Những cải tiến và thay đổi sẽ đến với đường West Marginal Way SW

Để tìm hiểu thêm và chia sẻ suy nghĩ của bạn, hãy tham gia với chúng tôi tại Nhà Mờ Áo của chúng tôi vào Thứ Năm, ngày 18 tháng 2, 6-7:30 chiều www.seattle.gov/transportation/West-Marginal-Way-SW-Improvements

Để yêu cầu thông dịch viên hoặc hỗ trợ cho người khuyết tật tại Nhà Mờ Áo, vui lòng liên lạc với chúng tôi theo số 206-400-7511 hay WestSeattleBridge@seattle.gov 3 ngày trước ngày họp.

ការកែលម្អ និងការផ្លាស់ប្តូរទាំងឡាយកំពុងតែធ្វើឡើង នៅផ្លូវមេឃ្លាង តូប៉ុងណាងខាងលិចសេ ម៉ាជីនីល West Marginal Way SW

ដើម្បីស្វែងរកយល់ព័ត៌មានបន្ថែមនិងចែករំលែកមតិរបស់អ្នក សូមចូលរួមជាមួយពួកយើងនៅកន្លែងការប្រជុំតាមរយៈអ៊ីនធឺណិតលើអគ្រឿងនៅថ្ងៃពុធហាស័កទី១៨ ខែកុម្ភៈ ម៉ោង៦:០០ ដល់ ៧:៣០ល្ងាចនៅលើគេហទំព័រ www.seattle.gov/transportation/West-Marginal-Way-SW-Improvements

ដើម្បីស្វែងរកយល់ព័ត៌មានបន្ថែមនិងចែករំលែកមតិរបស់អ្នក សូមចូលរួមជាមួយពួកយើងនៅកន្លែងការប្រជុំតាមរយៈអ៊ីនធឺណិតលើអគ្រឿងនៅថ្ងៃពុធហាស័កទី១៨ ខែកុម្ភៈ ម៉ោង៦:០០ ដល់ ៧:៣០ល្ងាចនៅលើគេហទំព័រ www.seattle.gov/transportation/West-Marginal-Way-SW-Improvements

Fooya'ini fi jijjiramni garra karaa Litta maddi karra litta Kaaba-Litta(West Marginal Way SW) dhuffa jiirra.

Dabbalatan baru fi yaada kessan nuuf koodu yoo barbaadan Kamisa, Gurandhala 18, galgala sa'ati 6:00 - 7:30 Mana Viidiyoo Hallalaa Banaa keenyan hidha kana fayadamati nukkunama: www.seattle.gov/transportation/West-Marginal-Way-SW-Improvements

Tuurjumaana gaafachudhaf yookin warri miidha qamma yookin fedhi adaa qabdan haali akka issini mijaahu gaafachu yofetan lakoofsa bilbiila kanan 206-400-7511 yookin WestSeattleBridge@seattle.gov guyas 3 dhursati nukuunama.

West Marginal Way SW 的改善和更改工程即將開始。

要了解更多以及分享您的想法，請加入我們將於2月18日星期四晚6點-7:30舉行的網上開放日。網址：www.seattle.gov/transportation/West-Marginal-Way-SW-Improvements

開放日當天如需口譯員或殘障人士如有特殊要求，請於會議開始前3天致電 206-400-7511或發郵件至 WestSeattleBridge@seattle.gov。

Hagaajin iyo isbeddel ku imanaya waddada

Si aad wax badan uga ogaato ood nala wadaagto ra'yigaaga, ku soo biir Aqalka Furan ee Muuqaalka ah Khamaista, Febraayo 18, 6 ilaa 7:30 fidka www.seattle.gov/transportation/West-Marginal-Way-SW-Improvements

Si aad u weydiisato tarjumaan ama fududeyn loo sameeyo dadka tabartoodu dhiman tahay ee dhinaca Aqalka Furan ee Muuqaalka ah, fadlan nagala soo xiriir 206-400-7511 or WestSeattleBridge@seattle.gov 3 cisho ka hor taariikha kulanka.

Adonis Duckworth
Senior Communications Lead
206-400-7511 / WestSeattleBridge@seattle.gov

JANUARY 2021



WEST MARGINAL WAY SW IMPROVEMENTS

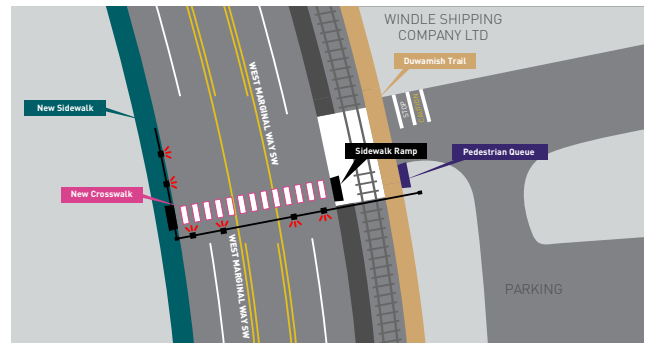


PROJECT HIGHLIGHTS

1 DUWAMISH LONGHOUSE CROSSING AND SIGNAL

In 2021, we will build an interim signal and crosswalk to provide safe crossing for people accessing the Duwamish Longhouse. We will also install a sidewalk on the west side of West Marginal Way between the Duwamish Longhouse and SW Idaho St.

We will build the permanent signal in 2022.



4 SPEEDING

We are committed to Vision Zero goals of reducing motorist speeding, crashes and fatalities.

Last year, we installed six speed radar signs along West Marginal Way to help reduce the travel speeds from 40 mph to 30 mph.

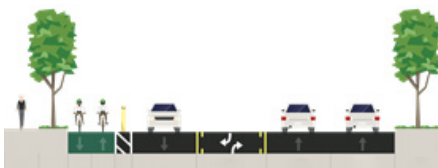
Please join us at the open house to share ideas for how we can further increase safety.



2 BIKE NETWORK CONNECTIONS

Last summer, people in West Seattle took the Reconnect West Seattle survey and told us they wanted better bike connections along West Marginal Way SW.

After looking at a number of options, we are proposing a protected bike lane along the west side of the street. Please join us at the house to share your thoughts.



Cross section of the proposed bike lane

3 DESIGN OPTIONS

There are three potential options for the west side of West Marginal Way SW heading south towards the Duwamish Longhouse south of the proposed bike lane. Those include:

- a) Extending the Proposed bike lane
- b) Extending the existing on-street parking
- c) Opening the lane back up to general traffic

Please join us at the open house to share your thoughts and ask questions.



5 MOBILITY IMPROVEMENTS

Since the bridge closure, we have heard concerns about access and mobility along the corridor.

Please join us at the open house to share your ideas about how we can improve freight and business access along the corridor.