

SDOT ADA Transition Plan Update

Seattle Pedestrian Advisory Board Meeting

May 13, 2026



Presenter: Tom Hewitt, SDOT ADA Coordinator and Program Manager

Our Vision

Seattle is an equitable, vibrant, and diverse city where moving around is safe, fair, and sustainable. All people and businesses can access their daily needs and feel connected to their community.

Values & Goals

- Safety
- Equity
- Sustainability
- Mobility & Economic
- Vitality
- Livability
- Excellence
- Maintenance & Modernization



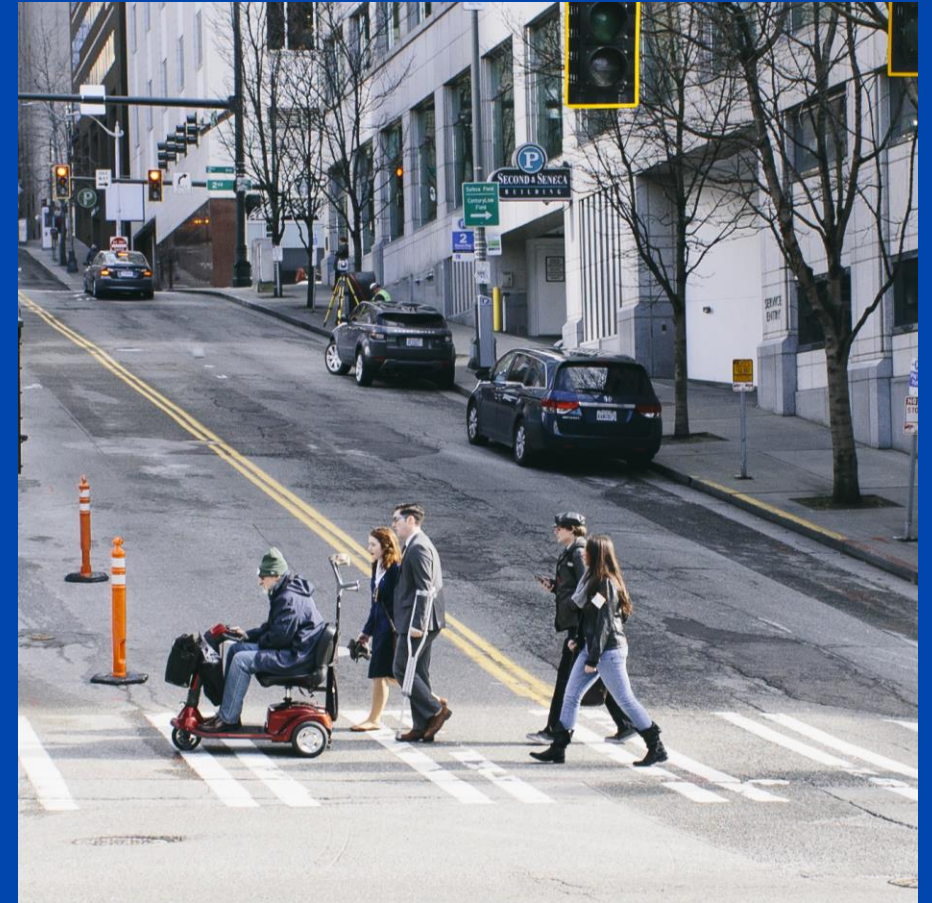


Presentation Outline

- Overview of the Americans with Disabilities Act (ADA) and Title II requirements
- SDOT's ADA Program
- ADA Transition Plan Update (TPU)
- TPU Survey Details
- Project Timeline
- What's Next?
- Q&A

What is the Americans with Disabilities Act?

- The Americans with Disabilities Act (ADA) is a **federal civil rights law**, enacted in 1990.
- The ADA protects people with disabilities from discrimination and ensures **equal access** to:
 - Public facilities
 - Programs and services
 - Transportation
 - Communication and information
- **Title II of the ADA** applies to state and local governments, including cities like Seattle.



ADA Title II Requirements

- **Title II of the ADA** focuses on state and local governments and access to programs, services, and activities
- Various court decisions define sidewalks and curb ramps as part of a capital improvements "program."
- Public entities must have a plan to remove existing barriers to access under the ADA
- Self-Evaluations and ADA Transition Plan
 - Existing facilities
 - Sidewalks, curb ramps, etc.
 - Public comment on the plan



Accessibility in the Built Environment



Accessibility in the Seattle ROW

- Sidewalk and Curb Ramp Examples



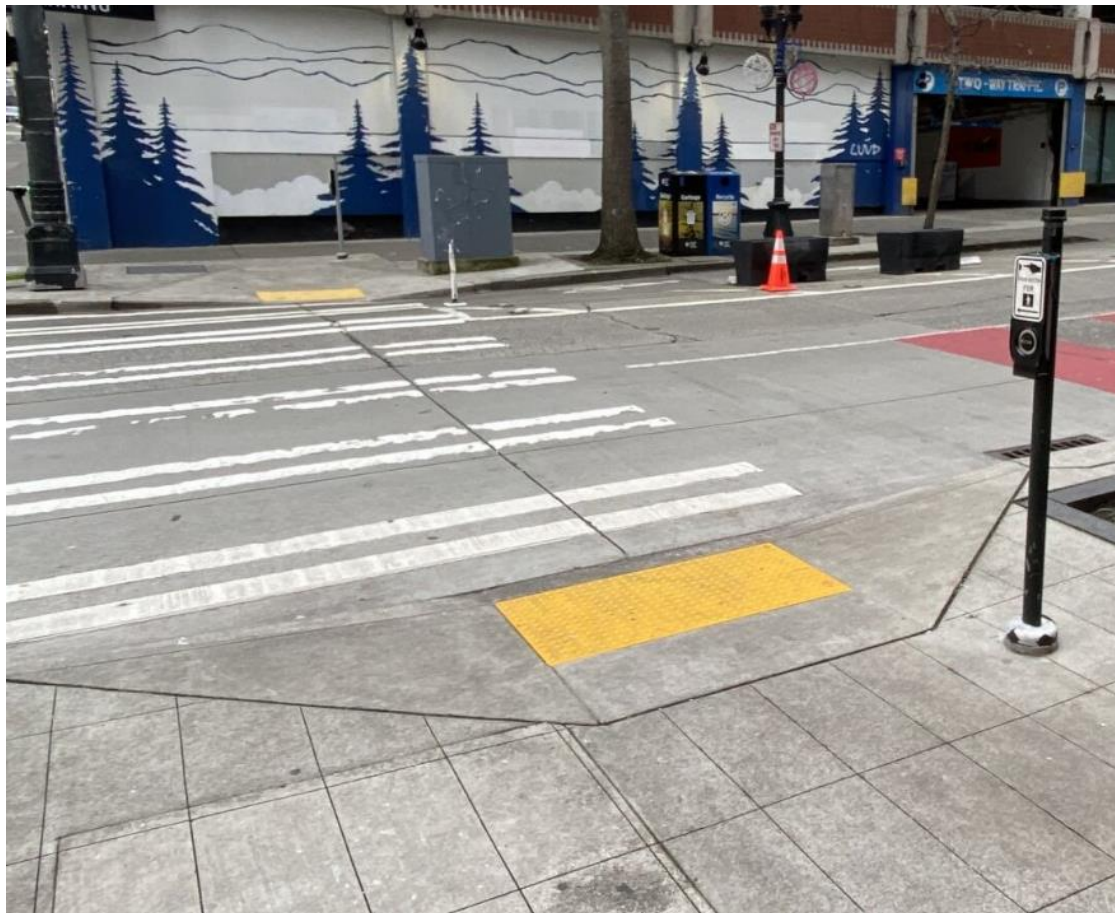
Accessibility in the Seattle ROW

- Examples of non-compliant curb ramps



Accessibility in the Seattle ROW

- Pedestrian Pushbuttons and Accessible Pedestrian Signals (APS)



Accessibility in the Seattle ROW

- Accessible Parking and Passenger Loading Examples



Accessibility in the Seattle ROW

- Tactile Walking Surface Indicator (TWSI) Examples



Accessibility in the Seattle ROW

- Construction and Temporary Pedestrian Access Examples



SDOT ADA Program

- Managed by SDOT ADA Coordinator
- ADA Program includes three interrelated teams:
 - Customer experience and outreach
 - Project planning, coordination, development
 - Design, construction, and inspections
- Oversees Reynoldson Consent Decree compliance
- Manages Customer Service Request (CSR) curb ramp program



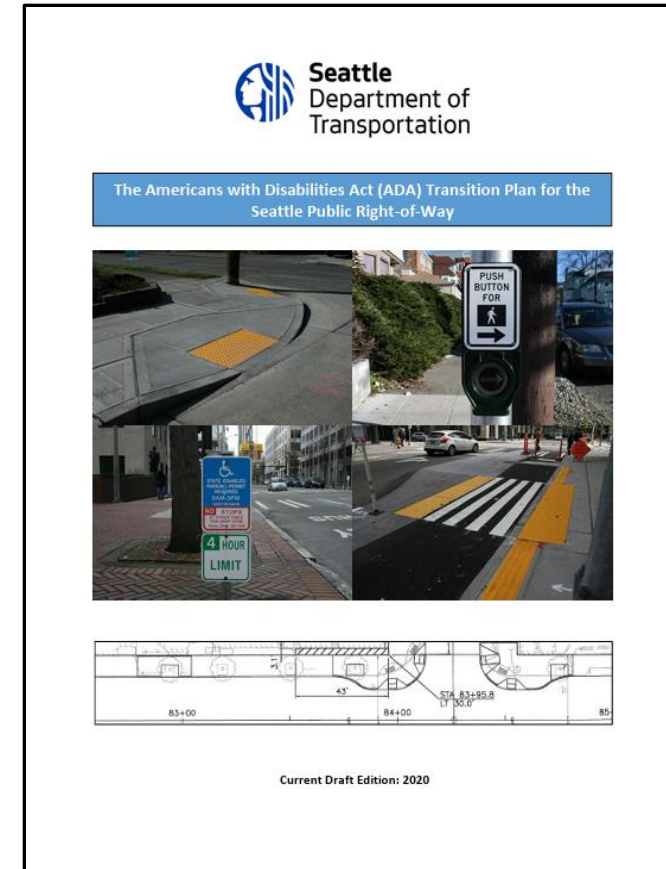
Curb Ramp Request Program

- Request-based program to construct curb ramps as part of Consent Decree
- Open to anyone who has a disability or on behalf of a person with a disability
- Constructed in the order they were requested unless another project triggers curb ramp improvements prior to program delivery



What is the ADA Transition Plan?

- An ADA Transition Plan is a **required planning document** for public agencies (over 50 employees) as outlined in Title II of the ADA
- It identifies **physical and programmatic barriers** that limit access for people with disabilities.
- The plan outlines:
 - Existing barriers to programs, services, and/or activities
 - How barrier removal projects and other improvements are prioritized
 - Methods and timing when barriers will be addressed
 - Who is responsible for implementation
- It is a **living document** that must be reviewed and updated over time.
- SDOT's current ADA Transition Plan was published in December 2020



What is the ADA Transition Plan Update?

Our ADA Transition Plan is more than a compliance document — it is our roadmap to building a community that is inclusive, safe, and accessible for all.

By identifying barriers, setting clear priorities, and engaging the community, we are ensuring that people of all abilities can participate fully in public life.



How does the ADA TPU relate to the STP?

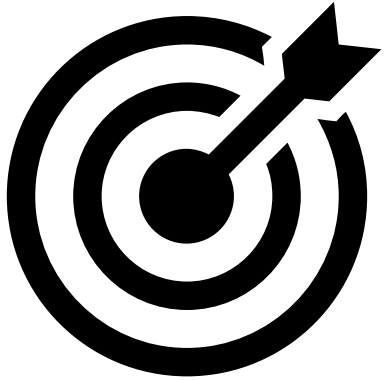
Seattle Transportation Plan (STP)

The STP defines the actions necessary to create the transportation system that is consistent with our vision and key initiatives

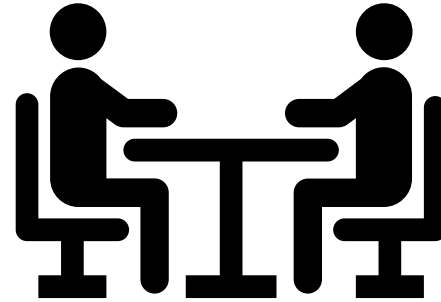
ADA Transition Plan Update

The ADA TPU works in coordination with the Seattle Transportation Plan (STP) to address existing barriers and provide a roadmap to an accessible pedestrian network

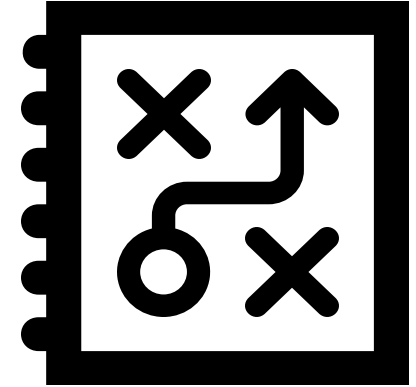
Why the ADA Transition Plan Update (TPU) now?



With the **adoption of the STP, the new transportation levy, and new SDOT priorities**, the ADA TPU will update the existing 2020 ADA Transition Plan to better align with our vision and goals



The ADA TPU will **help us coordinate and develop community-informed projects** based on priorities and destinations **requested by individuals with disabilities**



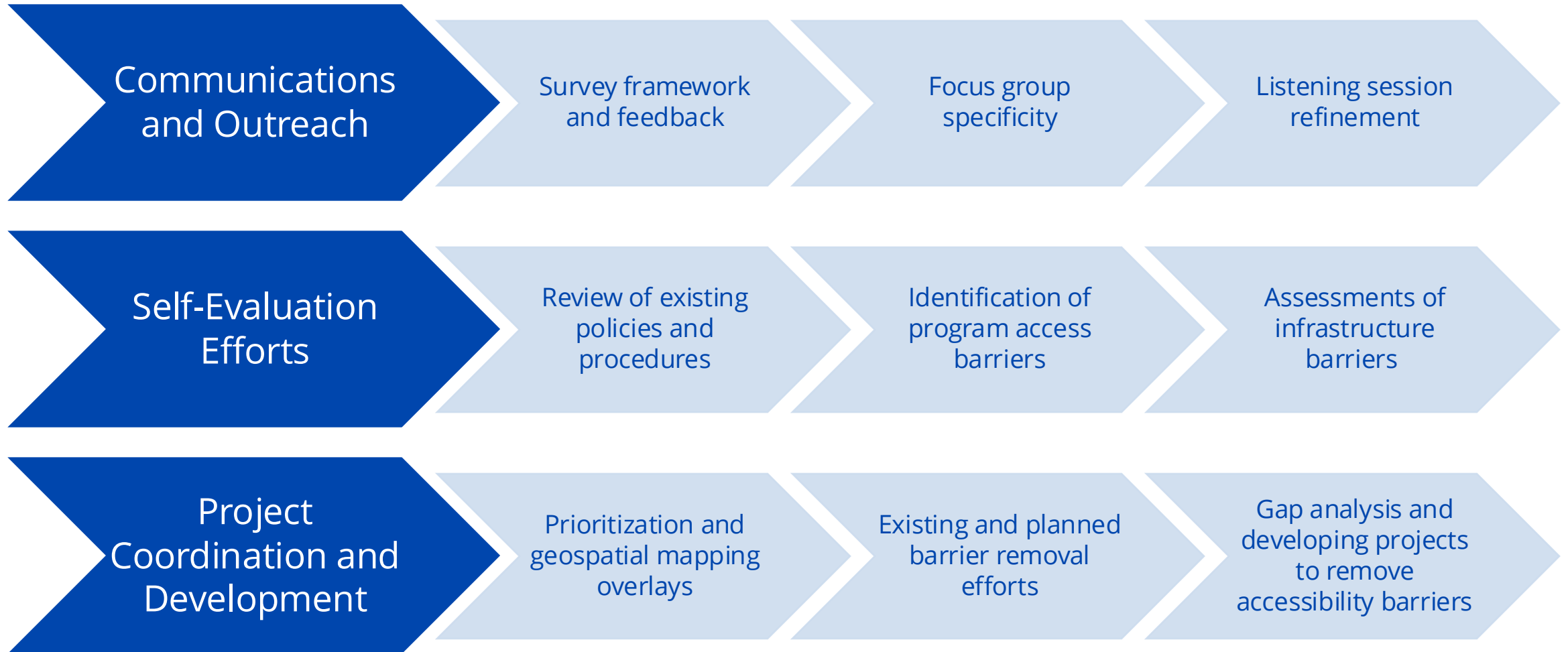
The ADA TPU will **supplement STP priorities** and additional department efforts to improve pedestrian accessibility by removing identified barriers through project coordination and development



Who is Involved?

- Led by ADA Program Team in partnership with:
 - Community Liaisons (CL) in the Department of Neighborhoods (DON)
 - Pedestrian Access Advisory Committee (PAAC) which includes representatives of the public within the disability community
 - Community Based Organizations
 - SDOT Modal Advisory Boards
 - General public focusing on individuals with disabilities

What will be in the ADA TPU?



SDOT ADA TPU - Structure and Approach

- Collect feedback from the disability community (PAAC, advocacy groups, etc.) to identify barriers and help SDOT determine priorities
- Develop additional self-evaluations based on issues in feedback
- Develop prioritization methodology and coordinate with existing SDOT programs to support existing or develop new barrier removal projects
- Develop projects and coordinate resources to address barriers to access
- **Relationship to Other Documents, Projects, and Initiatives**
 - Overlay to Seattle Transportation Plan (STP) and Transportation Levy priorities
 - Coordination with citywide and external partners
 - i.e. King County Metro Transition Plan

SDOT ADA TPU – Survey and Feedback

- SDOT ADA Program released the survey on May 1st
 - Survey will help determine where SDOT should focus efforts to assess barriers, identify accessibility issues, and rank priorities
 - Available in English, Traditional Chinese, Somali, Spanish & Vietnamese
- Project website will provide survey link to the public
 - Remain open until September 15th
- Other opportunities to provide feedback:
 - Focus groups to discuss specific priorities based on identified barriers and needs
 - Review of Final Draft of Transition Plan



ADA TPU Survey Content

- **Background Information**

- Standard demographics (age/gender/employment status/race and ethnicity)
- Disability related questions (nature of disability/service animals or assistive tools/mobility)
- Seattle residency, neighborhood, etc.
- Affiliation/organization

- **Priority Destinations & Locations**

- Ranking important destinations
- Destinations w/ limited access or barriers



ADA TPU Survey Content

- **Barriers & Challenges**

- Right of way barriers encountered for priority locations
- Ranking criteria for curb ramp improvement
- Current difficulties for **curb ramps, sidewalks, pedestrian crossings, sidewalks, and APS**
- Ranking importance of pedestrian improvements & other access issues
- Temporary pedestrian routes w/ construction
- Curbside drop-off/pick-up

- **Survey Wrap Up & Involvement**

- Travel priorities
- How they found survey



ADA TPU Survey Improvements from 2016

- **Limitations of previous survey**

- Primary focus on curb ramps, identified facilities/locations were very limited
- Many questions focused on frequency of difficulty w/ access vs. nature of difficulty
- Basic questions evaluating access

- **Improvements**

- Questions beyond curb ramps (sidewalks, ped crossing, APS, loading zones, etc.)
- Questions ask/specify nature of difficulty
 - (e.g., **what** aspects makes sidewalks difficulty to use)
- Wider range of identified facilities/primary destinations
- Option for short response answers for elaborating responses/voicing thoughts



Timeline and What's Next?



Estimated Timeframe	Action
May 1	Launch of ADA TPU and online survey
September 15	Survey closes
Fall 2026 to Spring 2027	Review survey feedback and identify focus groups for specific barriers and priorities
Spring 2027	Develop ADA-specific priorities, coordinate with SDOT program owners, and begin self-evaluation efforts
Summer 2027	Develop ADA priority spatial overlay

Questions?

Thank you!

Stay in touch

Email:

Tom.Hewitt@seattle.gov

DOT_ADAProgram@seattle.gov

Phone: 206 - 386 - 1055

Website:

<https://www.seattle.gov/transportation/projects-and-programs/programs/ada-program>

Please scan the QR code below to learn more about SDOT's ADA Program and to access the Transition Plan Update survey link:

