

SBAB June 2022

**Block the Box and Transit Lane Automated Enforcement
Update**

Presenter:
Christine Alar – Transit and Mobility



The Problem



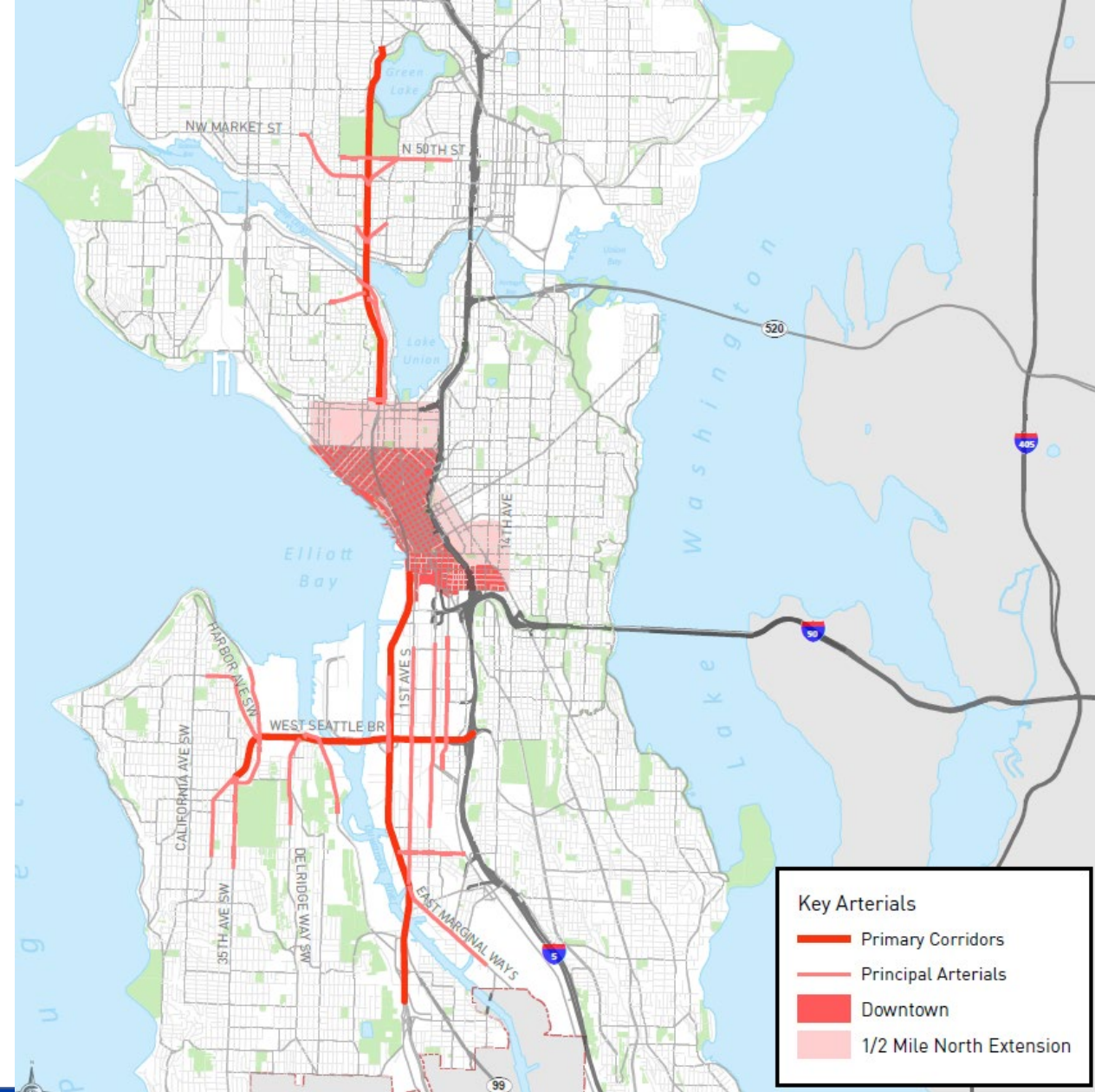
- Impacts Intersection Safety and Operations



- Impacts Transit Speed and Reliability

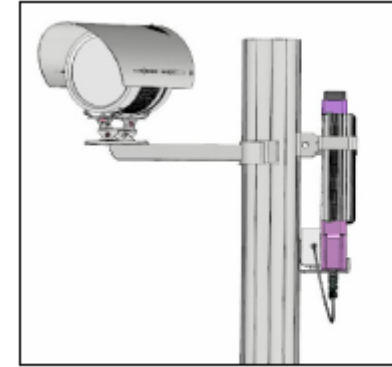
Legislation

- State House Bill 1793 then City Ordinance 126183 Amends SMC 11.31.090 & 11.50.570 for BtB and Transit Lane enforcement
- No more than 20 BtB locations. No limit for Transit Lane enforcement locations
- Fines limited to \$75
- Net citation proceeds to be split:
 - 50% to City of Seattle's APS program
 - 50% to State's Cooper Jones Active Transportation Safety Account
- 3-year Pilot now ends **June 30, 2025**

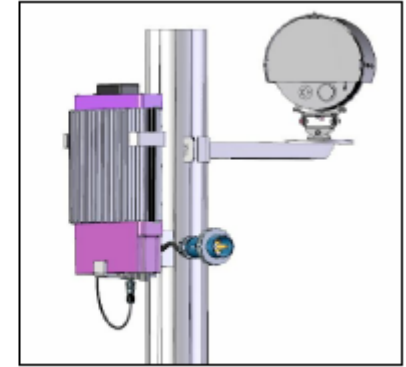


Contract, Coordination and Citations

- Existing Contract with Verra Mobility for red light and school zone cameras managed through Seattle Police Dept
 - Attaching cameras to city light/joint use poles
- Work closely with SPD for visual review of photos by officers
- Citations processed through Municipal Court
 - 1st violation warning; 2nd citation



FRONT VIEW



REAR VIEW

Site Selection

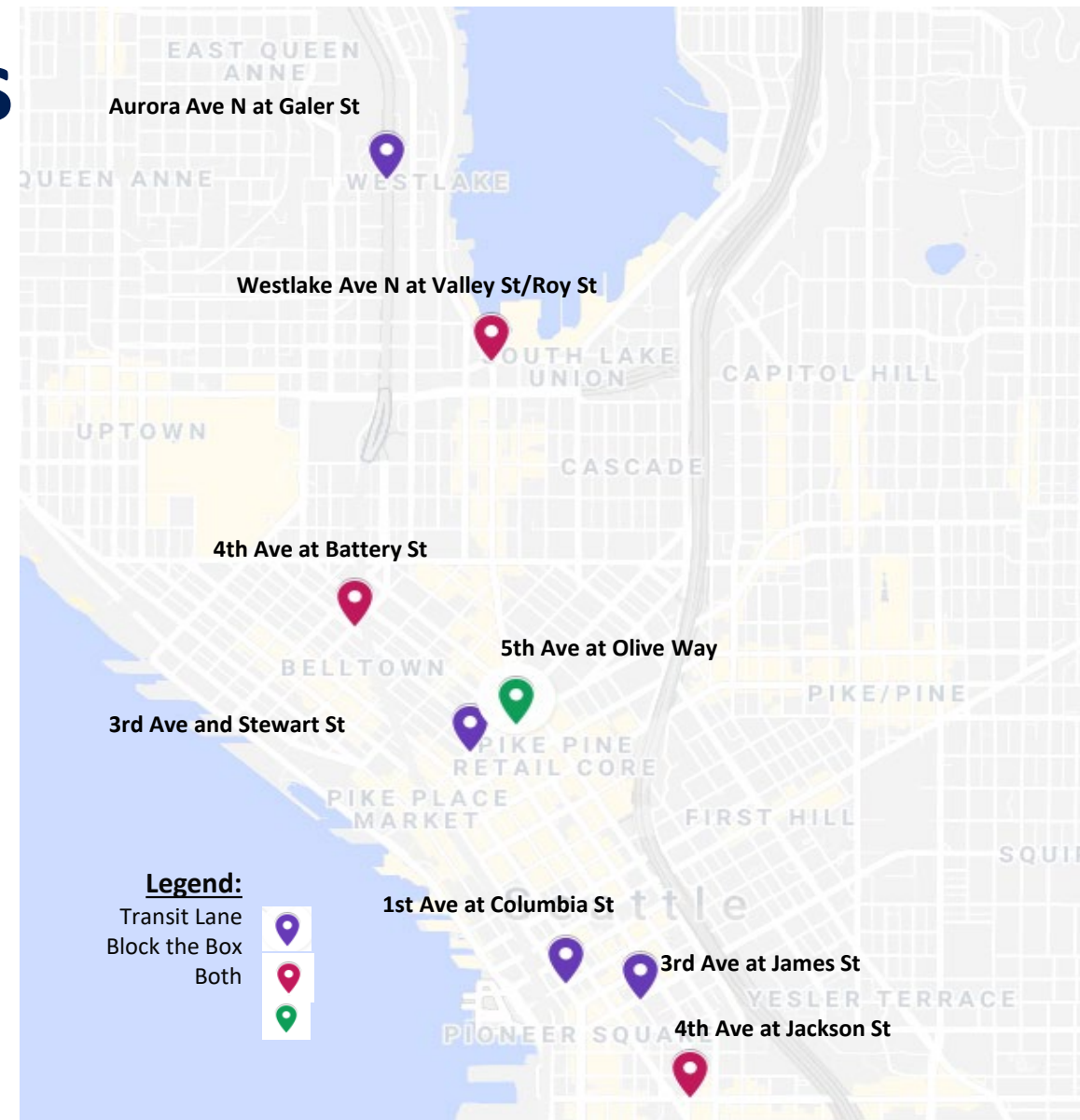
Metro/SDOT Coordination

- Initial locations identified with 2019 violation counts
- Participated in field visits with SDOT, Metro and Verra Mobility
- Metro Transit Route Facilities staff assessed potential power option for cameras via bus shelter connection
- Metro will provide bus AVL data to support SDOT's future reporting to legislature



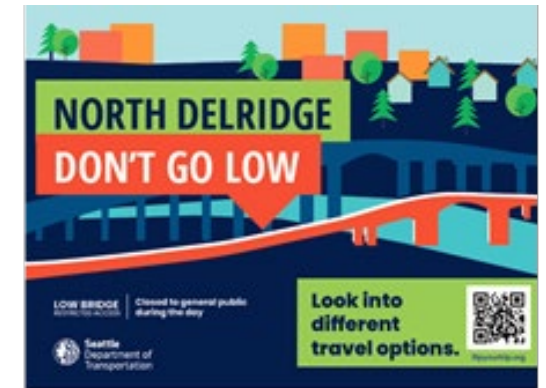
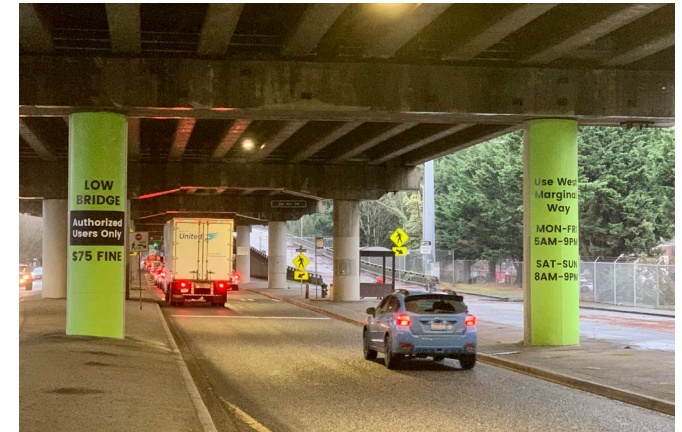
Selection of Pilot Locations

Location	Type of Enforcement
Aurora Ave N at Galer St	Transit Lane
3rd Ave at James St	Transit Lane
1st Ave at Columbia St	Transit Lane
3rd Ave and Stewart St	Transit Lane
5th Ave at Olive Way	Transit Lane and Block the Box
4th Ave at Battery St	Block the Box
4th Ave at Jackson St	Block the Box
Westlake Ave N at Valley St/Roy St	Block the Box



Communications and outreach to reduce citations on WSB

- SDOT Blog posts, web updates, press releases
- Community meetings
- Stakeholder meetings: Community Task Force, Maritime Town Hall, Low bridge access subcommittee
- Emails and phone calls to community members
- Yard signs throughout West Seattle
- Media relations, including ethnic media
- “Don’t go low” advertising campaign
- Mailer
- Painted bridge columns near the low bridge



Communications Strategy

- Engaged SDOT communications team for media and press release
- Preliminary and Final reports required as part of legislation
 - Measure change in driver behavior and impact to transit operation
- Outreach and Driver Education Strategy includes:
 - Posting 'Photo Enforcement' signage in ROW 30 days before camera activation
 - 30-day period of 'Warnings Only' when cameras are initially activated
 - after 30 days, 1st violation warning, 2nd violation is citation
 - Insert included with warnings and citations describing camera enforcement
 - Translated into multiple languages



Data Evaluation and Reporting

- Report back to State Legislature
 - Preliminary Report by June 30, 2024
 - Final Report by January 1, 2025
- Evaluation Data to Include
 - Pilot Locations
 - No. of Warnings and Traffic Infractions issued
 - No. of Warnings and Traffic Infractions issued to vehicles registered outside of the county in which the city is located
 - Infrastructure improvements made using the citation revenue
 - Equity analysis that includes any disproportionate impacts, safety, or driver behavior impacts
 - Operational benefits to traffic, and transit on-time performance etc.
 - Recommendations for future



Conclusion

- BtB and Transit Lane Automated Enforcement
 - Critical tools to enhance intersection safety and transit reliability
- **Not a revenue generator**
- Excess revenues support equitable access and mobility for people with disabilities
- ATECs can be used for traffic management and safety



Christine Alar - SDOT

Transit and Mobility

Transit Service and Strategy

Christine.Alar@Seattle.gov



Monthly Warning-Citation Breakdown

	MAR	APR	MAY	JUN	JUL	AUG	SEP	OCT	NOV	DEC
Total Notices Issued	9,682	19,272	13,304	23,298†	16,869*	4,453*	9,100*	18,474	11,542	16,936
Number of Warnings	4,656	9,800	6,742	12,338	8,430	1,677	3,231	7,186	4,304	6,464
Number of Citations	5,026	9,472	6,562	10,960	8,439	2,746	5,869	11,288	7,238	10,479
Warnings - % of total	48%	51%	51%	53%	50%	38%	36%	39%	37%	38%
Citations - % of total	52%	49%	49%	47%	50%	62%	64%	61%	63%	62%

†Mapping service provider issue *SPD backlog/review-window expiration

