

# Safe Routes to School

# Our vision, mission, and core values

**Vision:** Seattle is a thriving equitable community powered by dependable transportation

**Mission:** to deliver a transportation system that provides safe and affordable access to places and opportunities

Committed to **6 core values:**

- Equity
- Safety
- Mobility
- Sustainability
- Livability
- Excellence

# Presentation overview

- Safe Routes to School (SRTS) Overview
- SRTS & the Levy to Move Seattle
- Updated SRTS Action Plan
- Key Engineering Tools



# What is Safe Routes to School?

- Safe Routes to School is a national movement to increase safe walking and biking to school
- Benefits to children include:
  - Having fun
  - Strengthening connections to their communities
  - Improving physical and mental health
  - Arriving to school in time for breakfast and ready to learn
- We are focused on extending SRTS benefits to these groups:
  - Communities of color
  - Low-income communities
  - Immigrant and refugee communities
  - People with disabilities
  - People experiencing homelessness or housing insecurity
  - The LGBTQIA+ community
  - Girls

# SRTS & the Levy to Move Seattle

*Levy Commitment: Complete 9-12 Safe Routes to School projects each year along with safety education to improve walking and biking safety at every public school in Seattle.*

- 9-12 school safety projects per year
- At least one safety project for every public school
- \$5.6M total Levy funding (\$600k-\$800k/year)
- \$1M-\$6M per year of School Safety Traffic and Pedestrian Improvement Funds (SSTPIF)
- SRTS deliverables are scalable
- Delivering SRTS projects uses both Levy and SSTPIF



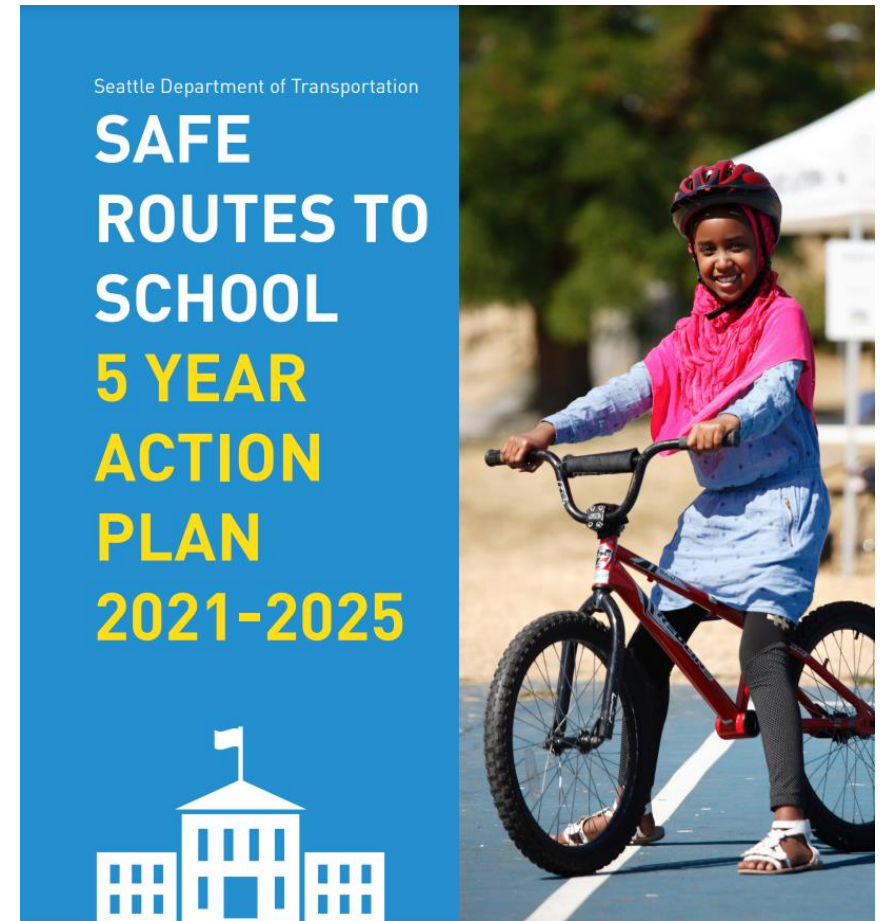
# SRTS & the Levy to Move Seattle

Year	Number of SRTS Projects
2016	16
2017	31
2018	41
2019	29
2020	16
2021	22
<b>TOTAL THROUGH 2021</b>	<b>155</b>
2022 - 2024	9-12 planned (to meet Levy goal each year)



# SRTS Action Plan Update

- First Action Plan launched in 2015
- Launched the *Let's Go* program that serves every 3rd, 4th, and 5th grade student in Seattle Public Schools, including students with disabilities
- 130 engineering improvements at priority schools
- Awarded 115 Mini Grants
- Gave out free incentives 35 times
- Held 21 Banana Brakes
- Conducted driver safety campaigns at 7 schools
- Updated school bike parking requirements
- Racial Equity Analysis





# SRTS Racial Equity Analysis

- SRTS is a gateway to walking and biking and a gateway to a passionate group of people (parents!) who may not attend public meetings
- Conducted 2-year Racial Equity Analysis (2017-2019)
- Engaged 1,000s of residents at nearly 70 community events at schools and community organizations as well as a citywide survey





# SRTS Action Plan Framework

- 7 E's of Seattle's Safe Routes to School program
  1. Equity
  2. Environment
  3. Education
  4. Empowerment
  5. Encouragement
  6. Engineering
  7. Evaluation

*The Safe Routes to School program is committed to reaching the City's equity, safety, and climate change goals*



## Equity

Eliminate racial disparities and achieve racial equity

VISION  
ZERO  
SAFER STREETS FOR SEATTLE

## Vision Zero

To end traffic deaths and serious injuries on city streets



## Climate Change

90% of personal trips are zero emission

# BY 2030





## ENVIRONMENT

Reduce the impact of school travel on the environment and climate change.

- To support carbon sequestration and reduce the impacts of increased temperatures, focus our tree planting program along Neighborhood Greenways in the hottest parts of the city which are also within communities of color





## EDUCATION

Ensure that everyone learns how to travel safely.

- Expand the *Let's Go* program to middle school, including students with disabilities, for six consecutive years of walking and biking safety education







## EMPOWERMENT

Provide resources to school champions.

- Provide up to \$1,000 to schools and community groups for activities that encourage safe walking and biking to school through our Mini Grant program
- Partner with Seattle Public Schools to promote EarthGen School Certification in the Transportation category





## ENCOURAGEMENT

Promote walking and biking in the school community.

- Share walking and biking route maps online for every public school in Seattle
- Explore opportunities to provide resources to communities of color that would mitigate barriers to walking and biking to school, such as helmets, bike locks, bike lights, and cold/rainy weather gear





## EVALUATION

Track progress toward our shared safety goals.

- Report annually on progress toward implementing actions
- Conduct a citywide survey to understand trends in walking and biking to school and evaluate perceptions of safety







## ENGINEERING

Design streets for safety and predictability.

- Help expand the Neighborhood Greenway and Stay Healthy Streets network, which provides routes that prioritize people walking and biking, by specifically providing these along routes to school





## ENGINEERING

Design streets for safety and predictability.

- Sidewalks
  - Concrete sidewalk including curb and gutter, planter strip with street trees
- Walkways
  - Cost effective option, primarily for non-arterial streets
  - Can include painted walkways or asphalt, with wheel stops
  - May include street trees







## ENGINEERING

Design streets for safety and predictability.

- Curb bulbs
- Floating bulbs and median islands
- Rectangular Rapid Flashing Beacons
- Pedestrian half signals



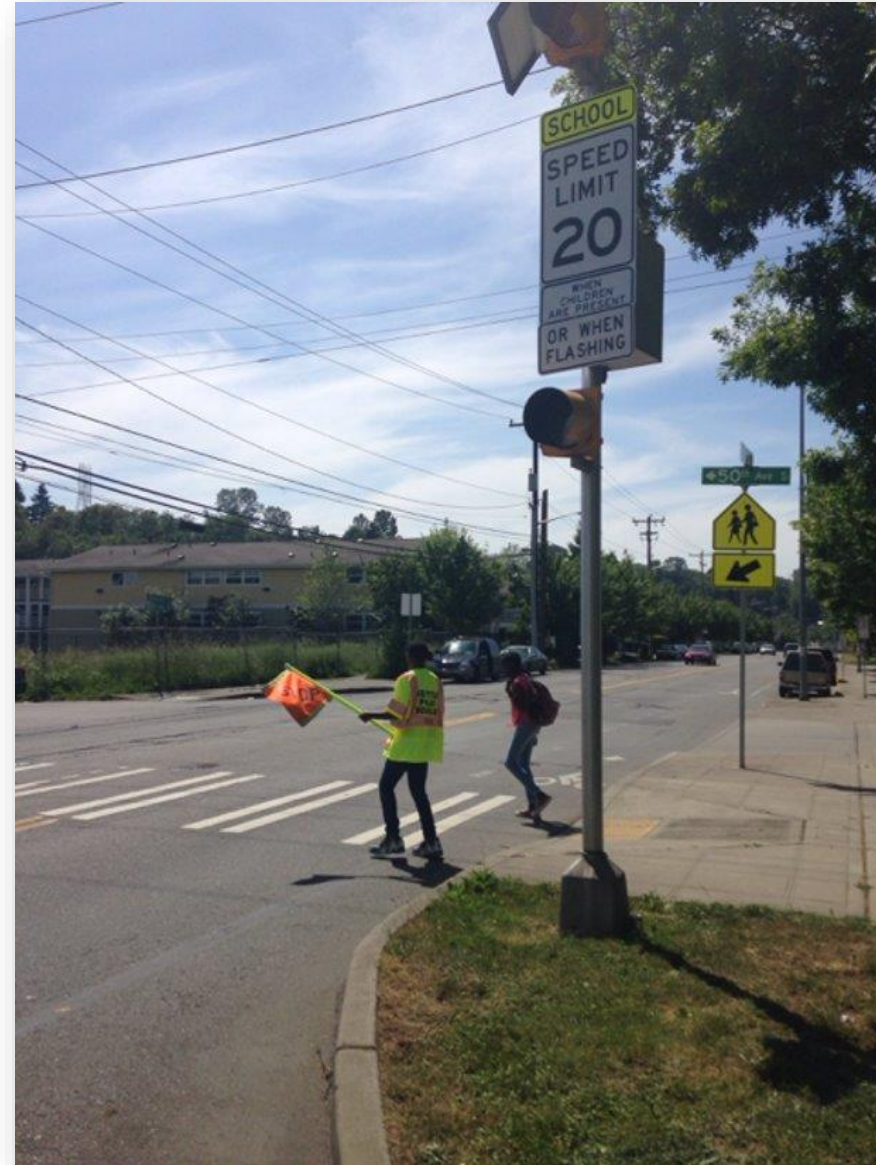




## ENGINEERING

Design streets for safety and predictability.

- 20mph Flashing Beacons





## ENGINEERING

Design streets for safety and predictability.

- 20mph Flashing Beacons
- Speed Cushions
- Speed Humps

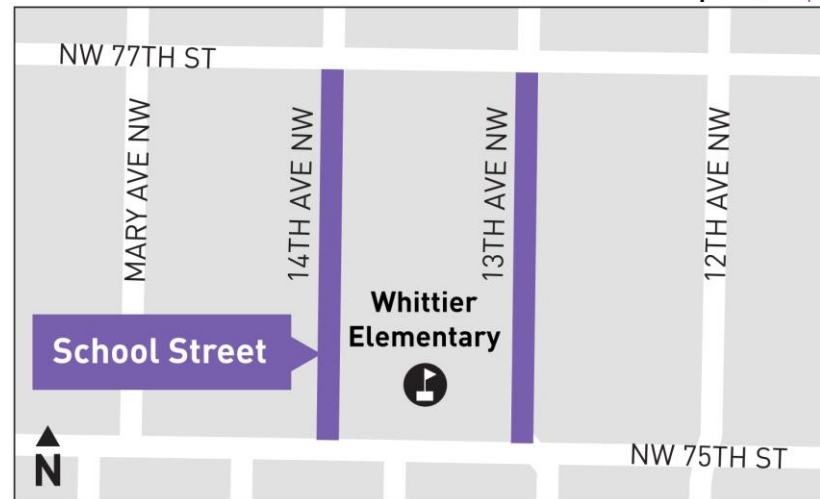




## ENGINEERING

Design streets for safety and predictability.

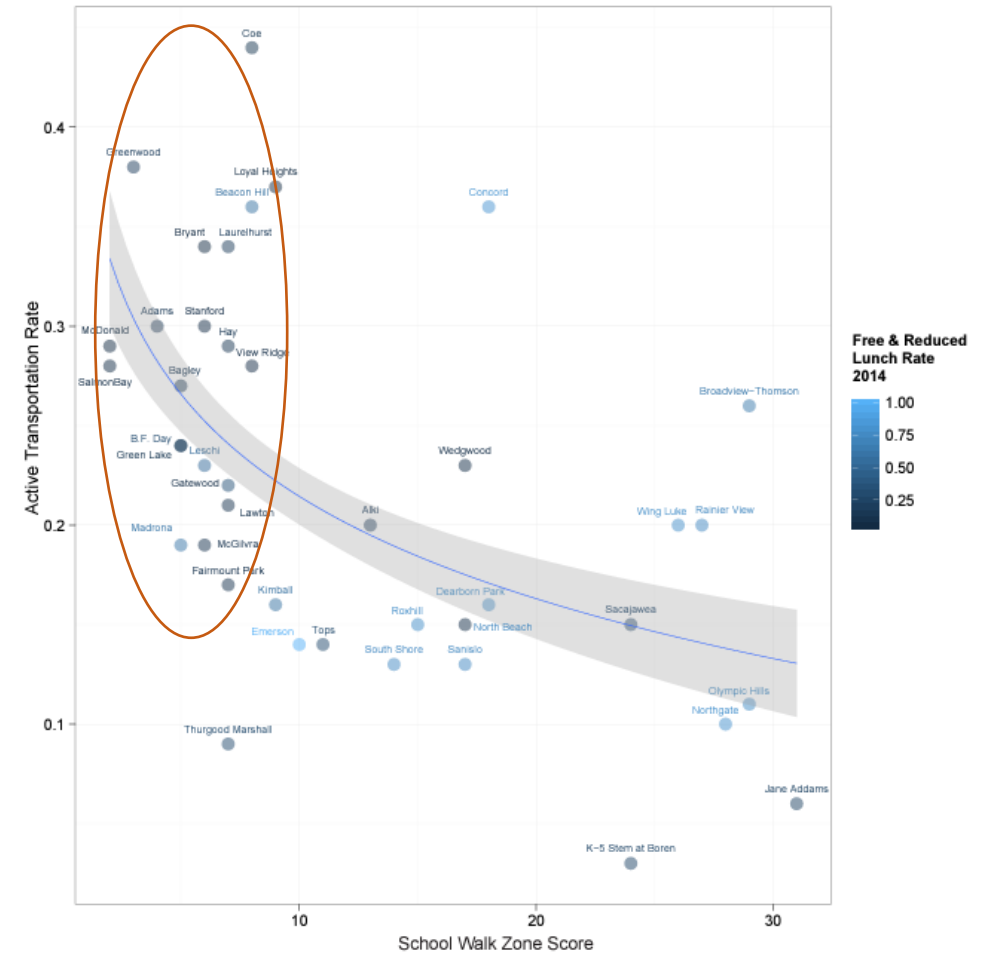
- School Streets
  - Close 1-2 blocks adjacent to school to through traffic and parents
  - Open up to families walking and biking





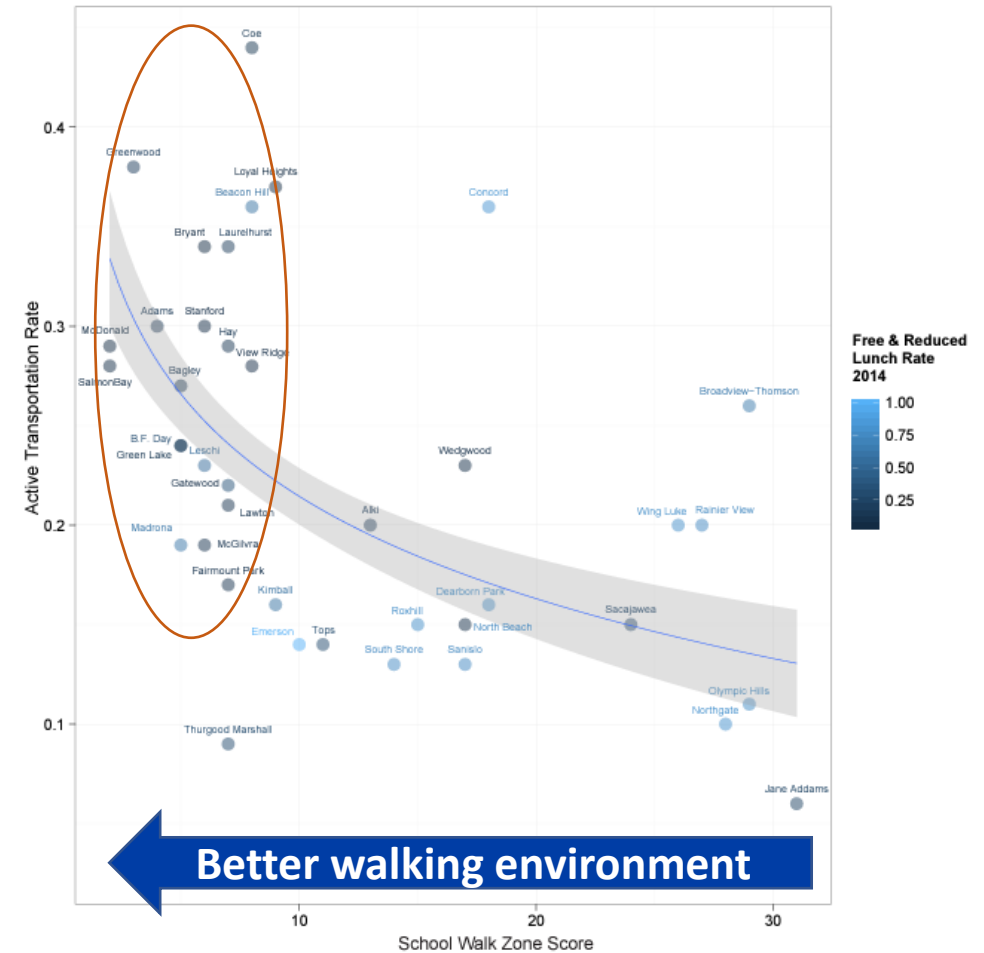
# Need for Investments in Infrastructure

- To reach SRTS goal of increasing walking and biking to school, we need significant investment in walking infrastructure within 1 mile of schools.



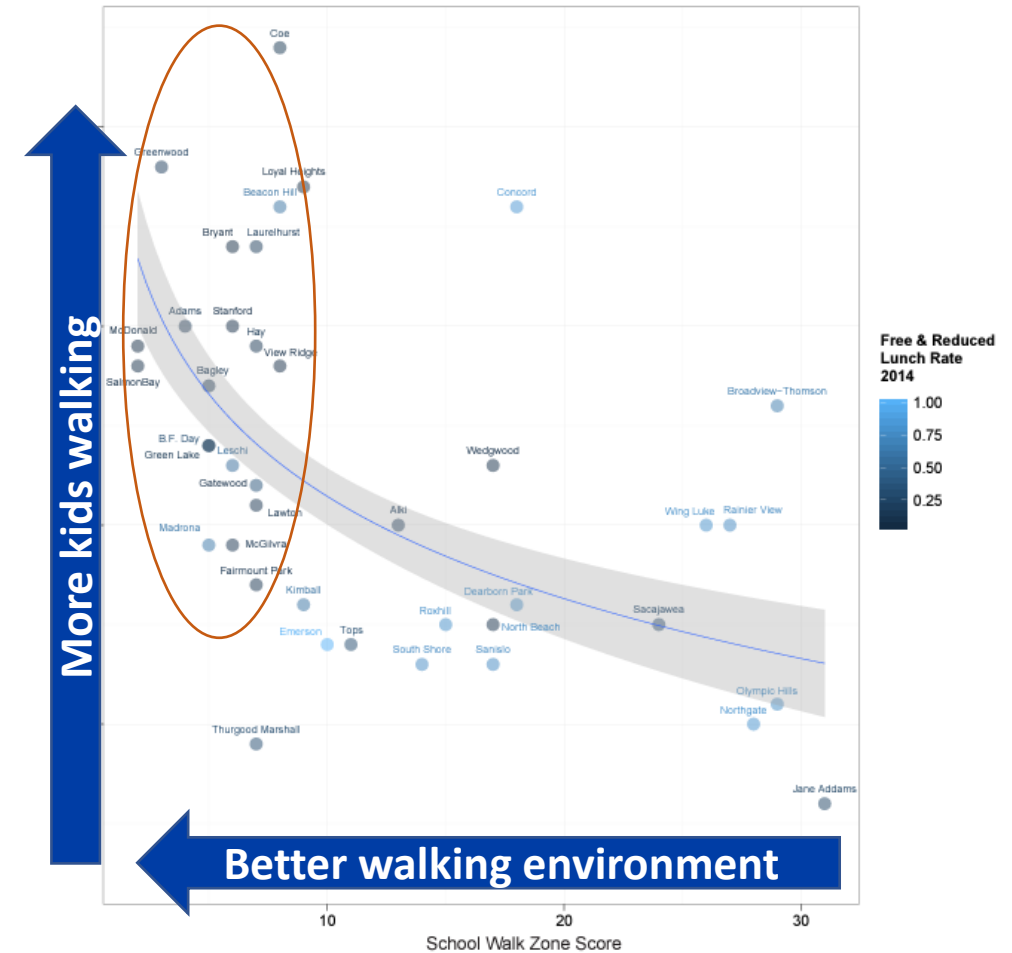
# Need for Investments in Infrastructure

- To reach SRTS goal of increasing walking and biking to school, we need significant investment in walking infrastructure within 1 mile of schools



# Need for Investments in Infrastructure

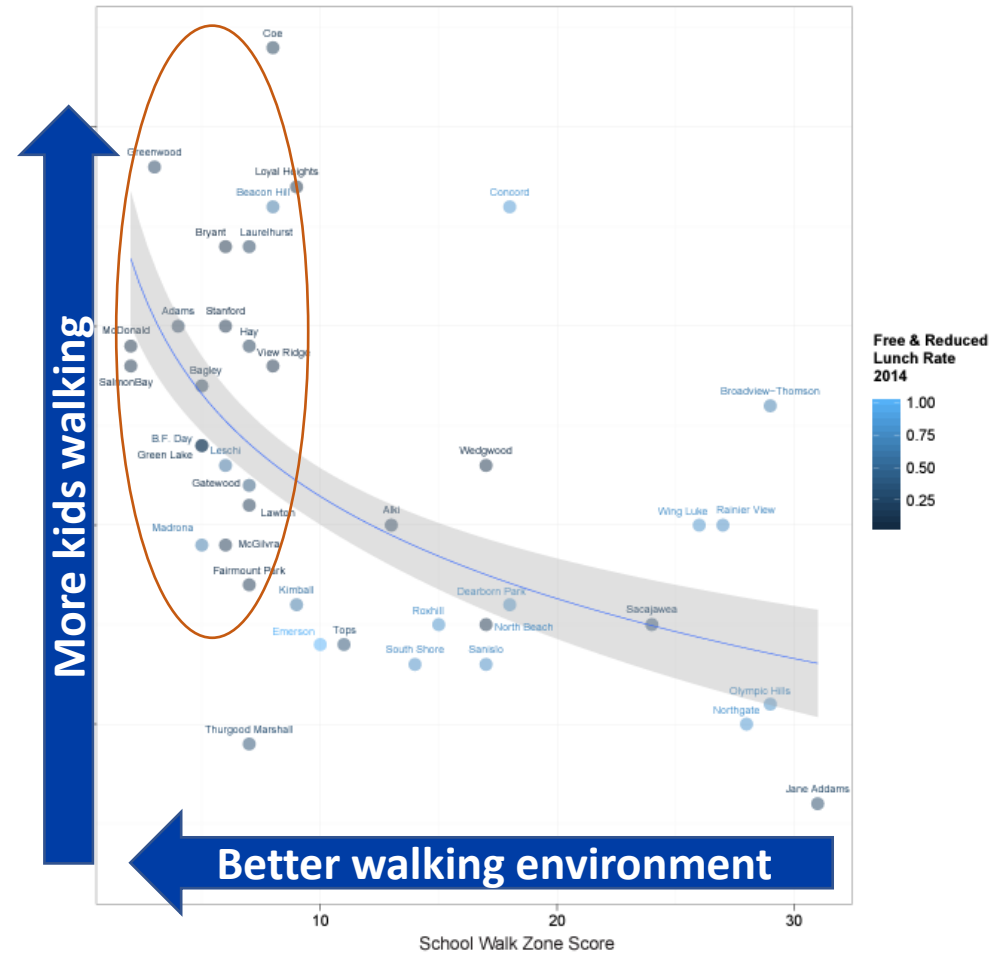
- To reach SRTS goal of increasing walking and biking to school, we need significant investment in walking infrastructure within 1 mile of schools





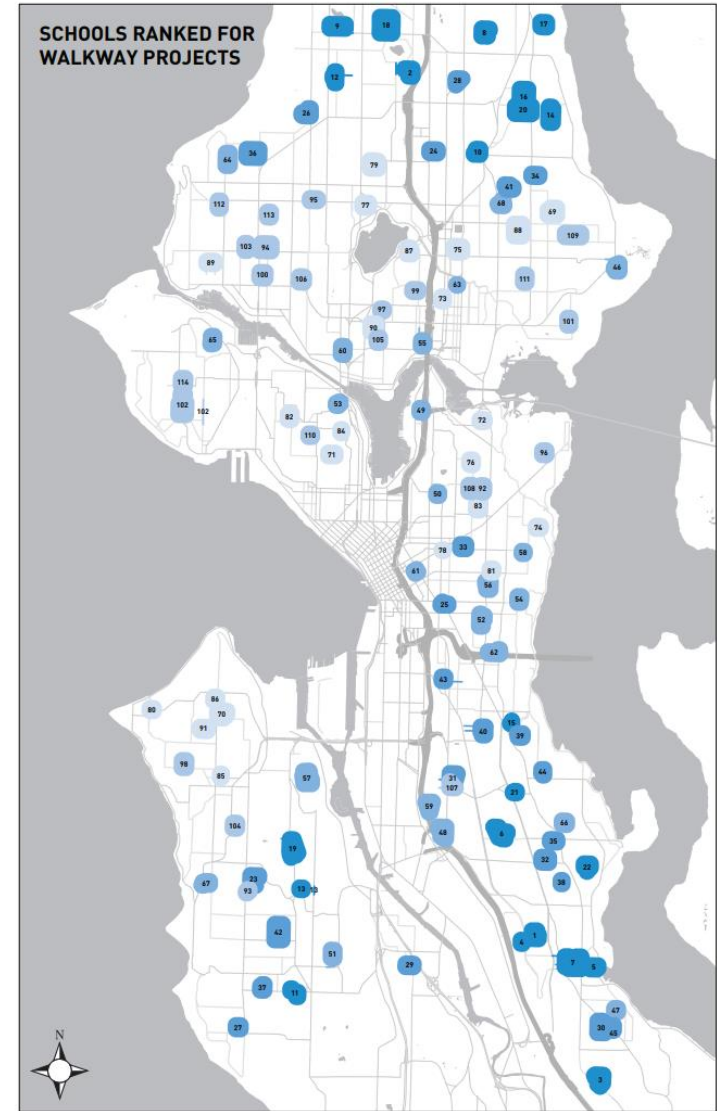
# Need for Investments in Infrastructure

- To reach SRTS goal of increasing walking and biking to school, we need significant investment in walking infrastructure within 1 mile of schools
- Schools in the red oval are more affluent, have better walking environments, and have higher walking/biking rates



# Equity Challenges & Opportunities

- Levy requires a safety project at *every* public school – not equitable
- SRTS prioritizes program resources (funds and staff time) in communities of color
- Prioritization based on Pedestrian Master Plan, Collisions, and School Race/Ethnicity Data



# Questions?

Ashley.Rhead@seattle.gov | (206) 684-7577

[www.seattle.gov/transportation/srts](http://www.seattle.gov/transportation/srts)

[www.seattle.gov/transportation](http://www.seattle.gov/transportation)

