



Transportation Equity Framework (TEF)

Part I: Values & Strategies

SBAB Presentation & Discussion

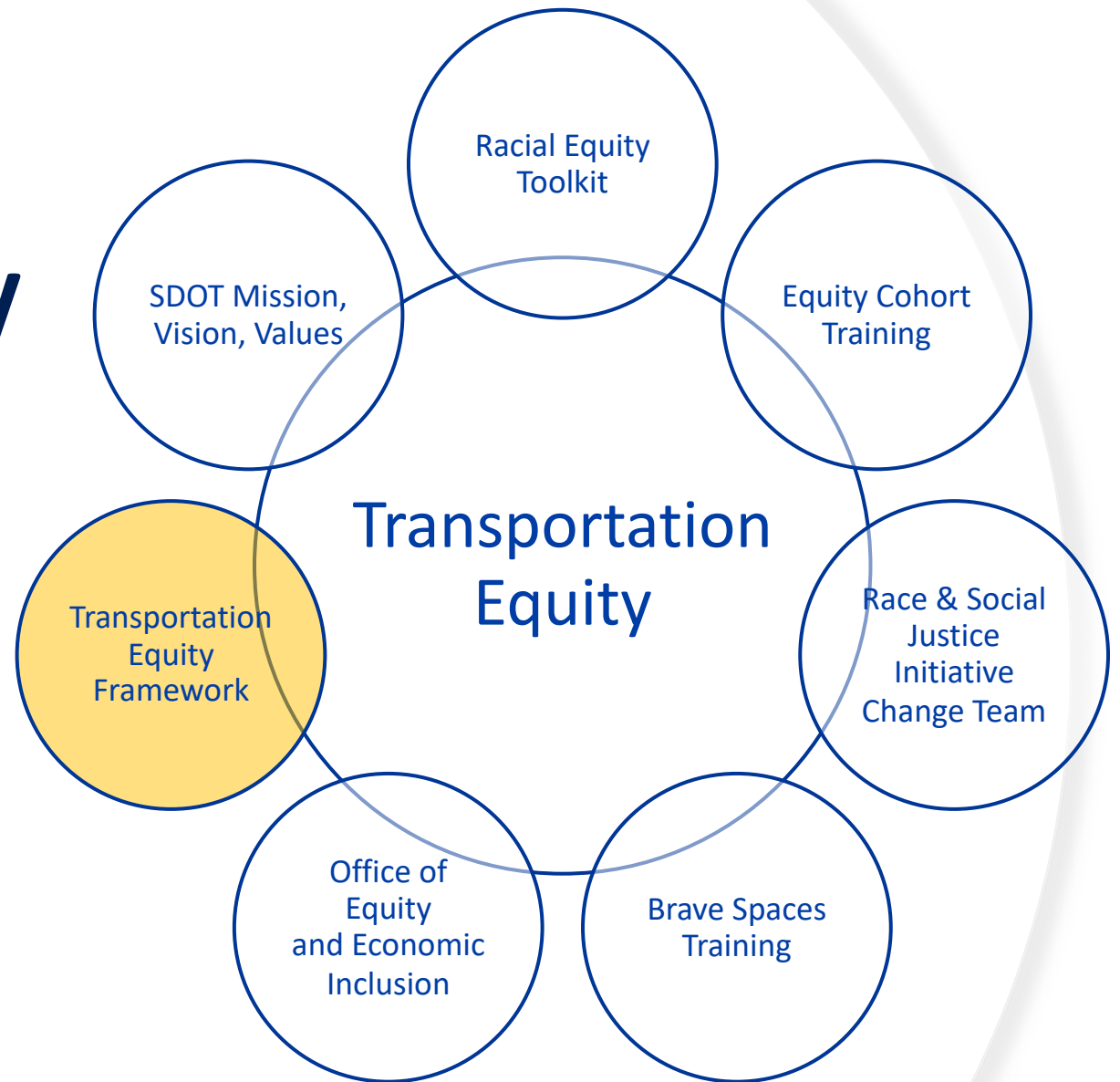
Overview

- Review SDOT's approach toward reaching transportation equity
- Share Transportation Equity Workgroup's first deliverable
- Learn more about the Transportation Equity Framework
- Call to Action



SDOT's approach to transportation equity

Training and practice integrated with community input, policies, and work plans



Transportation Equity Framework Development process

- Launched April 2019
- Includes:
 - The Transportation Equity Workgroup (TEW)
 - SDOT staff in the Transportation Equity Intradepartmental Team (TE-IDT)
 - SDOT Race and Social Justice Initiative (RSJI) Change Team
 - WMBE Firm: KAYA strategik LLC
- Role is to develop Transportation Equity Framework
 - Part 1: Values and Strategies
 - Part 2: Implementation Plan
- Completed Part 1 in December 2020
- Part 2 expected to be complete mid-2021

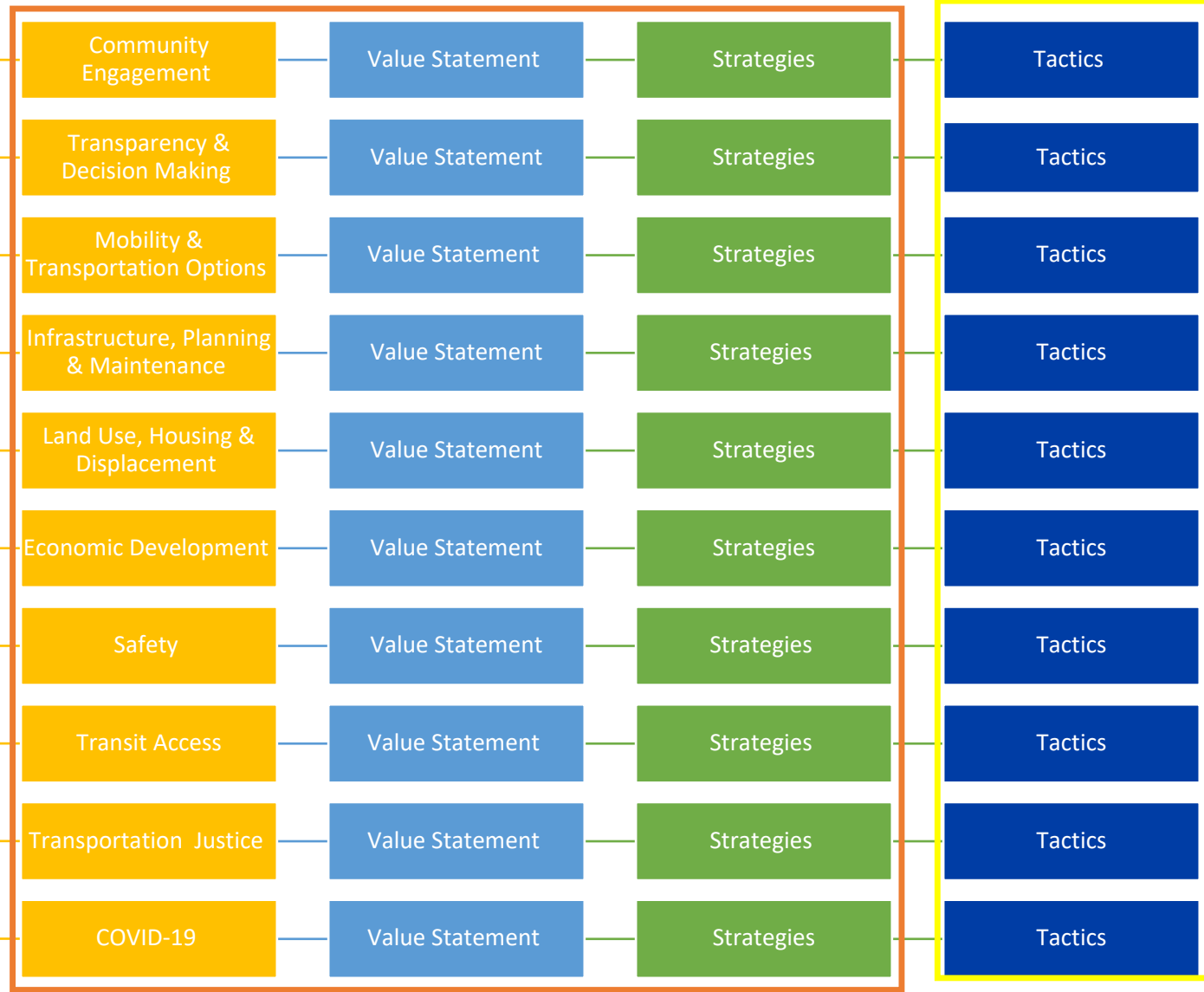


Transportation Equity Framework content

2019-2020



Part I: Values & Strategies



2021

Part 2: Implementation Plan

Co-develop with:

- TEW
- SDOT TE-IDT staff
- Division Directors
- Key SDOT staff
- RSJI Change Team
- Other City + County partners

TEW

TEW

TEW, TE-IDT,
Community



City of Seattle

Our North Star

- The Transportation Equity Framework is one tool to transform **policies, procedures and practices** to undo structural and institutional racism
- It's a **community guided vision** that serves as SDOT's North Star when considering equity priorities on policies, programs and projects that most impact Black, Indigenous and People of Color (BIPOC) communities, and communities that have historically and currently been underinvested by government

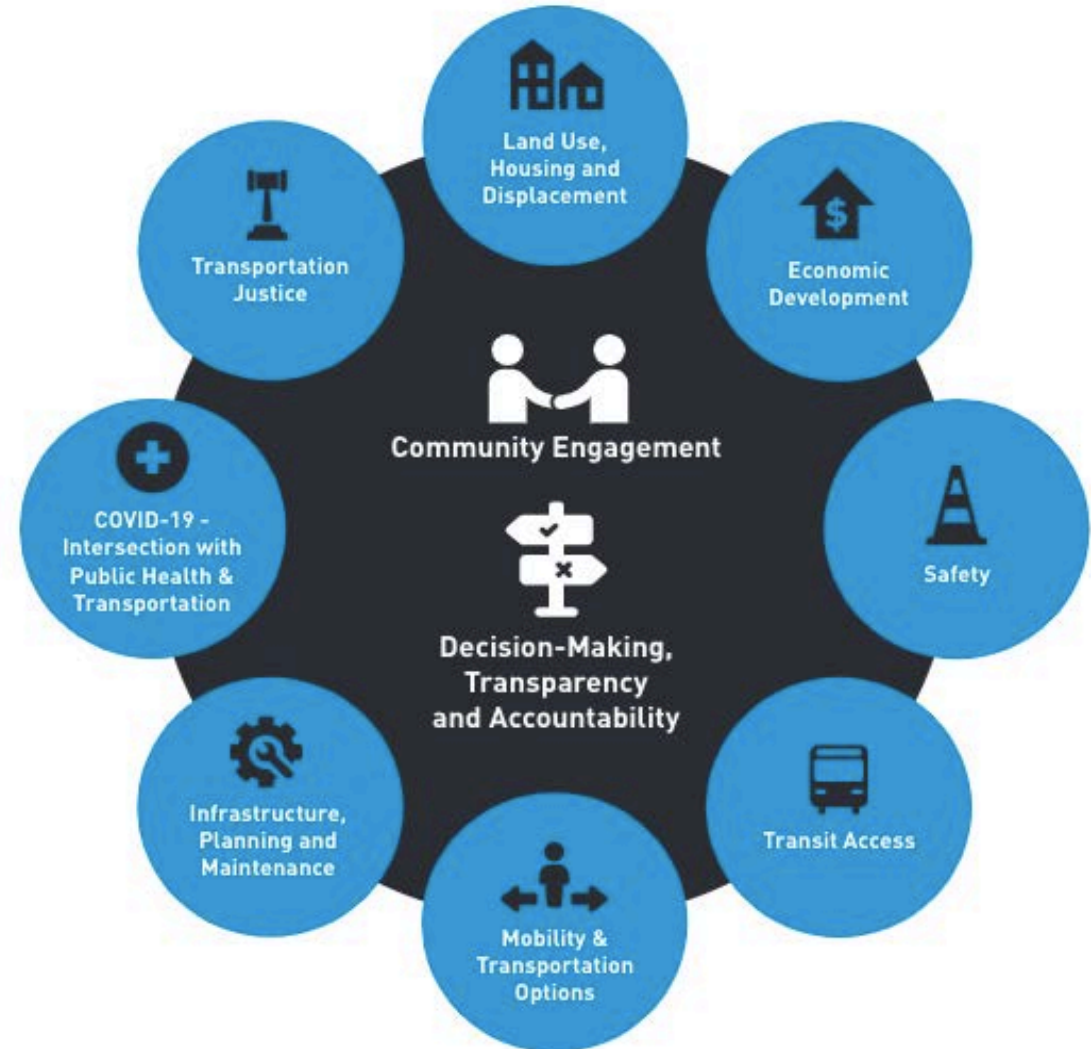


TEF, Part 1 an overview

"We believe transportation equity is underscored by two fundamental elements: **Community Engagement** and **Decision-making, Transparency and Accountability**. Building community trust and relationships is key to establishing transportation equity. Authentic and intentional community engagement and decision making must be done with transparency and accountability to assess impact and determine whether historic inequities are being shifted."

Excerpt from TEF letter written by
Transportation Equity Workgroup

TRANSPORTATION EQUITY STRATEGIES 2 Fundamental Equity Strategy Elements 8 Equity Strategy Drivers



Let's take a moment

Think about a time of when you felt unsafe using our transportation system

- When was it? And how did it make you feel?
- Were you able to resolve the experience, if so how?
- If not, why not?





Safety

TEW Value Statement on Safety:

We believe our transportation system should be safe regardless of one's age, ability, location, income, language, race and/or how they choose to get around.

Sneak peek of strategy:

1: Develop culturally appropriate and holistic ways of gathering transit and transportation safety qualitative data with a sense of and/or perception of emotional, mental and physical safety from vulnerable communities including seniors, people living with disabilities and BIPOC communities.

Transportation Justice



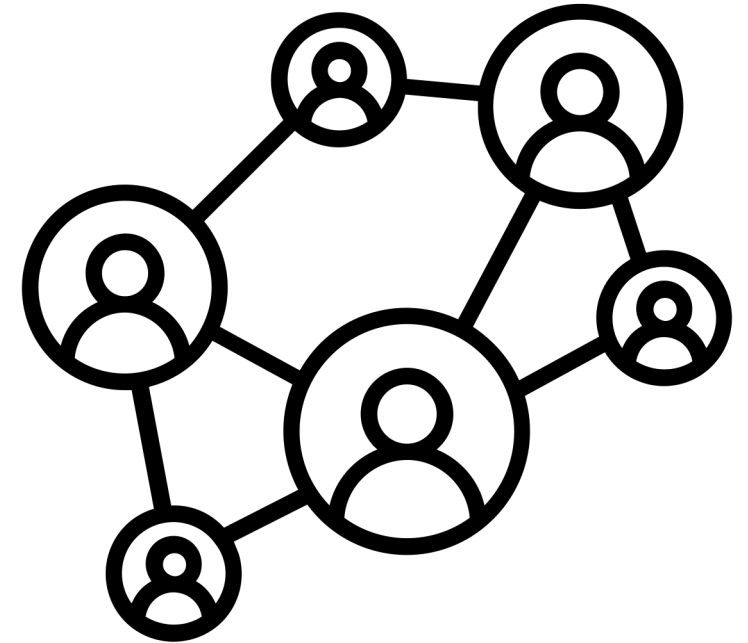
- **TEW Value Statement on Transportation Justice:**

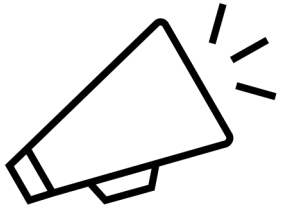
We believe transportation must be affordable, accessible and just, as it is an essential right for all people. We believe transportation laws and penalties are also a result of structural racism that have historically harmed, caused death and inflicted poverty on our BIPOC communities. We must also move towards decriminalizing transportation by redesigning existing laws and implementing non-punitive policies.
- **Sneak peek of strategy:**

2: Create and amend transportation policies to have an anti-racist and decriminalized framework with the goal of establishing a fair and just transportation system.

SDOT's equity efforts in 2021

- Challenge, lead discussions, and train staff to adapt and change to be more racially equitable
- Identify tactics for the TEF, Part 2: Implementation Plan
 - Co-develop with Transportation Equity Workgroup members
 - Align with SDOT's Race and Social Justice Initiative (RSJI) goals, Change Team efforts, and SDOT mission and values





Call to Action

- Educate yourself on anti-racist practices, the City's Race and Social Justice Initiative, and how to use your board role to advocate for the transportation needs of BIPOC communities.
- Replicate today's engagement in your meetings!
 - Challenge, lead discussions, and encourage each other to consider how the TEF: Part 1 Value & Strategies can inform your advice to SDOT
- Identify opportunities for alignment with the TEF and your Board's work plan
 - Read the Transportation Equity Framework, Part 1: Values & Strategies document and align it with SBABS's key workplan items and discussions.



Thank you!

Annya.Pintak@Seattle.gov

Transportation Equity Program Manager
SDOT, Office of Equity & Economic Inclusion (OEEI)

<https://www.seattle.gov/transportation/projects-and-programs/programs/transportation-equity-program/equity-workgroup>



City of Seattle