

MELROSE PROMENADE

Creating a safer, more inviting street for everyone

March 2022



OVERVIEW

Construction of the Melrose Promenade project began in February 2022 and will continue into the fall. When complete, this project will create a safer, more inviting street for everyone.

BACKGROUND

Built atop a high retaining wall, Melrose Ave is a key walking/biking connection. The construction of I-5 created a barrier between Capitol Hill and downtown that project neighbors have envisioned reconnecting through the “Melrose Promenade.”

Right now, the streets can be difficult to cross, some sidewalks and pavement are damaged, and drivers are exceeding the speed limit. Between 2013 and 2018, there were a total of 141 reported collisions on Melrose Ave between Roy St and University St. All but 1 of the serious injury collisions involved someone walking or biking between Denny Way and Pike St.

This project is a foundational step toward the community’s “Melrose Promenade” vision. We’re improving safety along Melrose Ave from E Roy St to University St by building speed humps, curb ramps, curb bulbs, new crosswalks, and protected bike lanes in sections, as well as repairing damaged pavement and sidewalks. See map on back for details.

Stay informed!

Visit our webpage to complete a construction survey, sign up for weekly email updates, and learn more about the Melrose Promenade project! We know construction can be disruptive and we’ll work to minimize impacts to neighbors as much as possible.



People walking on Melrose Ave between E Pine St and E Pike St

PROJECT INFORMATION & CONTACT

www.seattle.gov/transportation/melrose
 Candace Goodrich, Community Outreach Lead
 MelrosePromenade@seattle.gov or | (206) 529-4295

The Levy to

MOVE SEATTLE

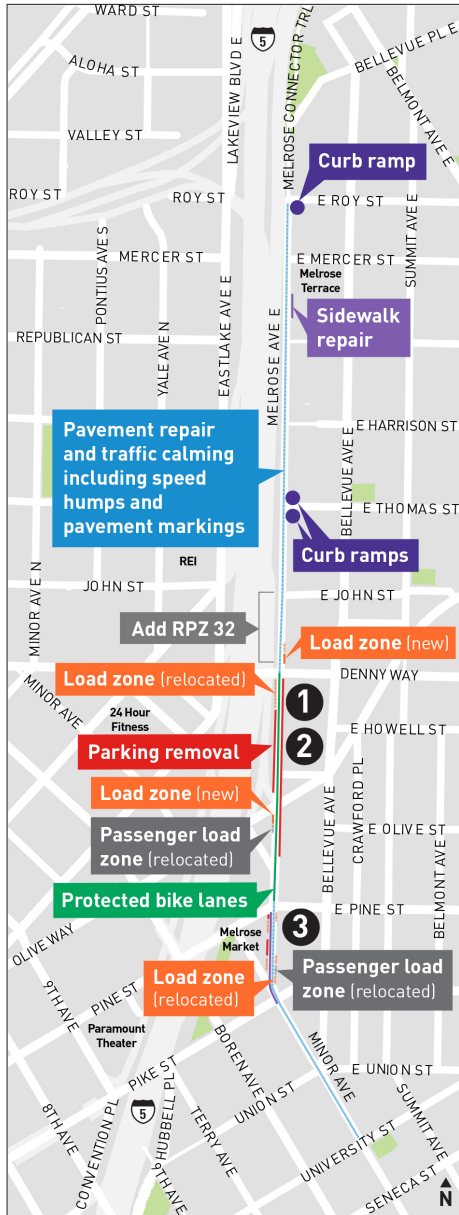


Seattle
 Department of
 Transportation

Project Design

These maps show the final design for the Melrose Promenade project. Visit our project webpage for more details.

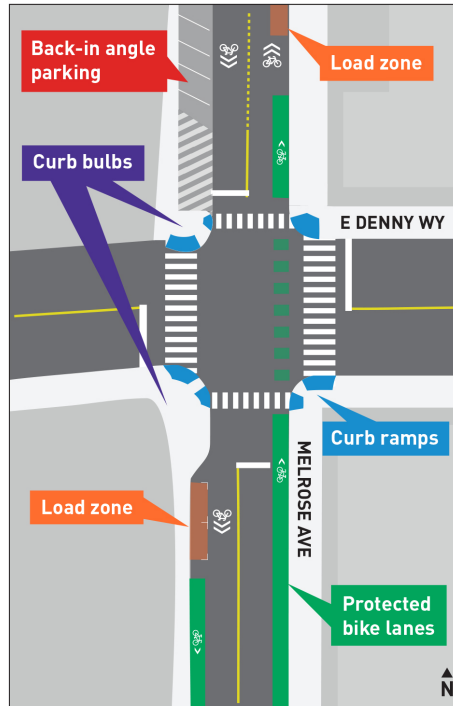
Design Maps



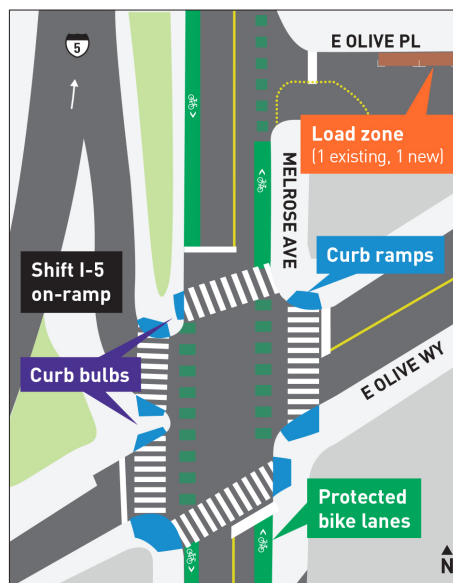
Restricted Parking Zones (RPZs) are residential areas around commuter traffic generators—like hospitals or light rail stations—where on-street parking is restricted for those except residents and short-term visitors.

Load zone types are subject to change.

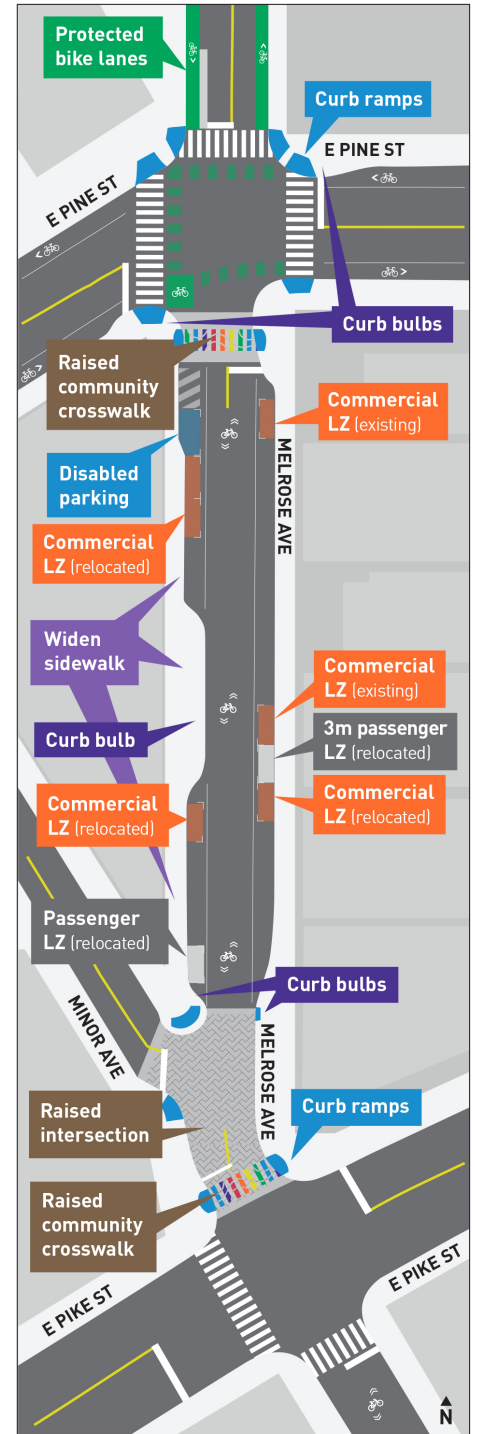
1 Melrose Ave/E Denny Way



2 Melrose Ave/E Olive Way



3 Melrose Ave/E Pine St to E Pike St



PROJECT INFORMATION & CONTACT

www.seattle.gov/transportation/melrose
 Candace Goodrich, Community Outreach Lead
MelrosePromenade@seattle.gov or I (206) 529-4295

The Levy to

MOVE SEATTLE



Seattle
 Department of
 Transportation