

WELCOME!

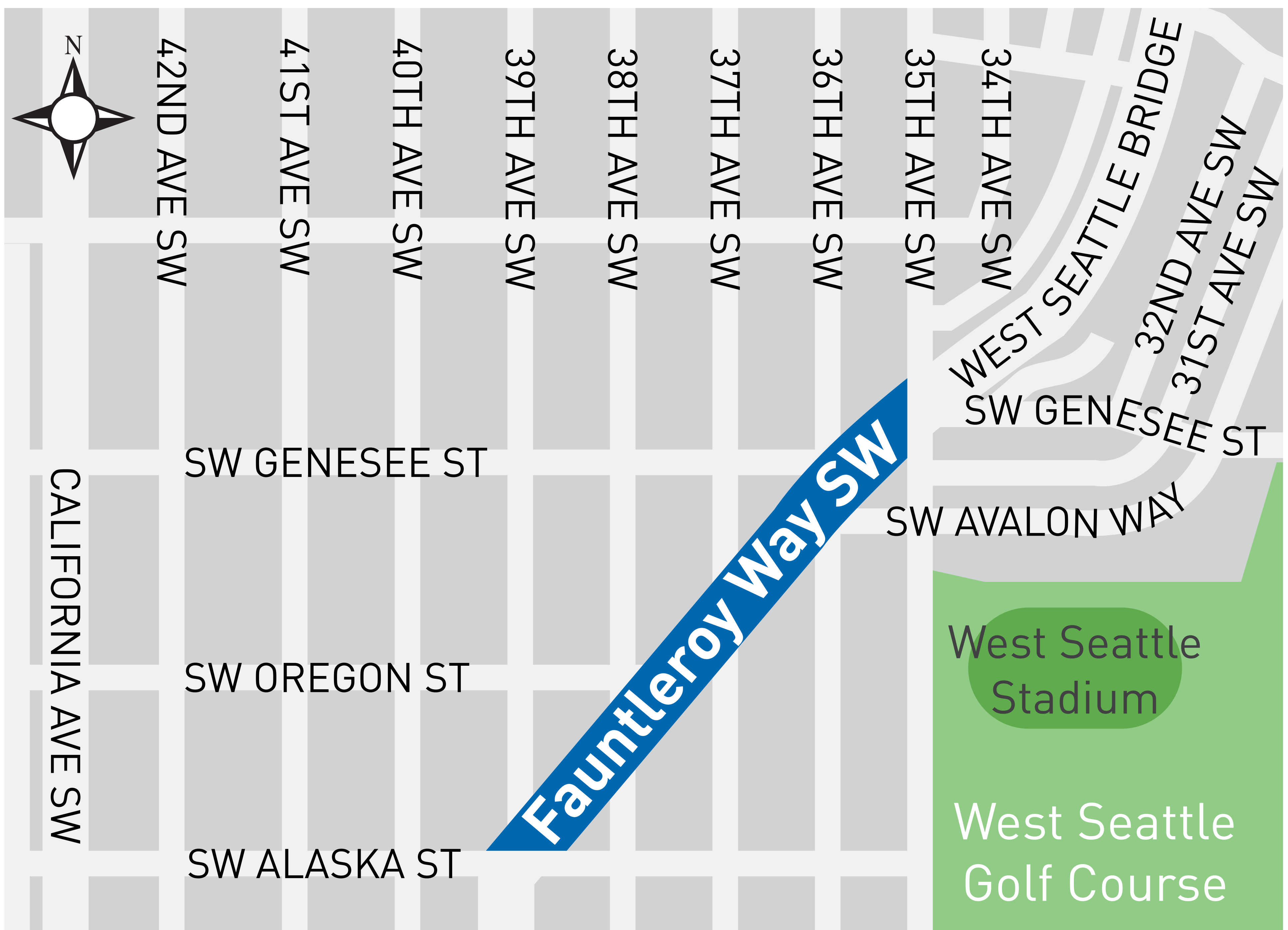
Project Goals:

- **Respond to community needs** identified in the West Seattle Triangle Plan and the Bicycle Master Plan
- **Improve mobility** by organizing the street to be more predictable and comfortable for everyone
- Enhance Fauntleroy Way's role as a **gateway entrance** to West Seattle



We're designing and building improvements for Fauntleroy Way SW between 35th Ave SW and SW Alaska St

Project area



PLANNING HISTORY

The Fauntleroy Boulevard Project builds on previous planning work by the community:

1999: West Seattle Junction Hub Neighborhood Plan calls for streetscape improvements

2008-2010: West Seattle Triangle Planning Advisory Group continues discussion of improvements

2012: Community selects preferred streetscape plan, which is formally adopted as a director's rule by the city

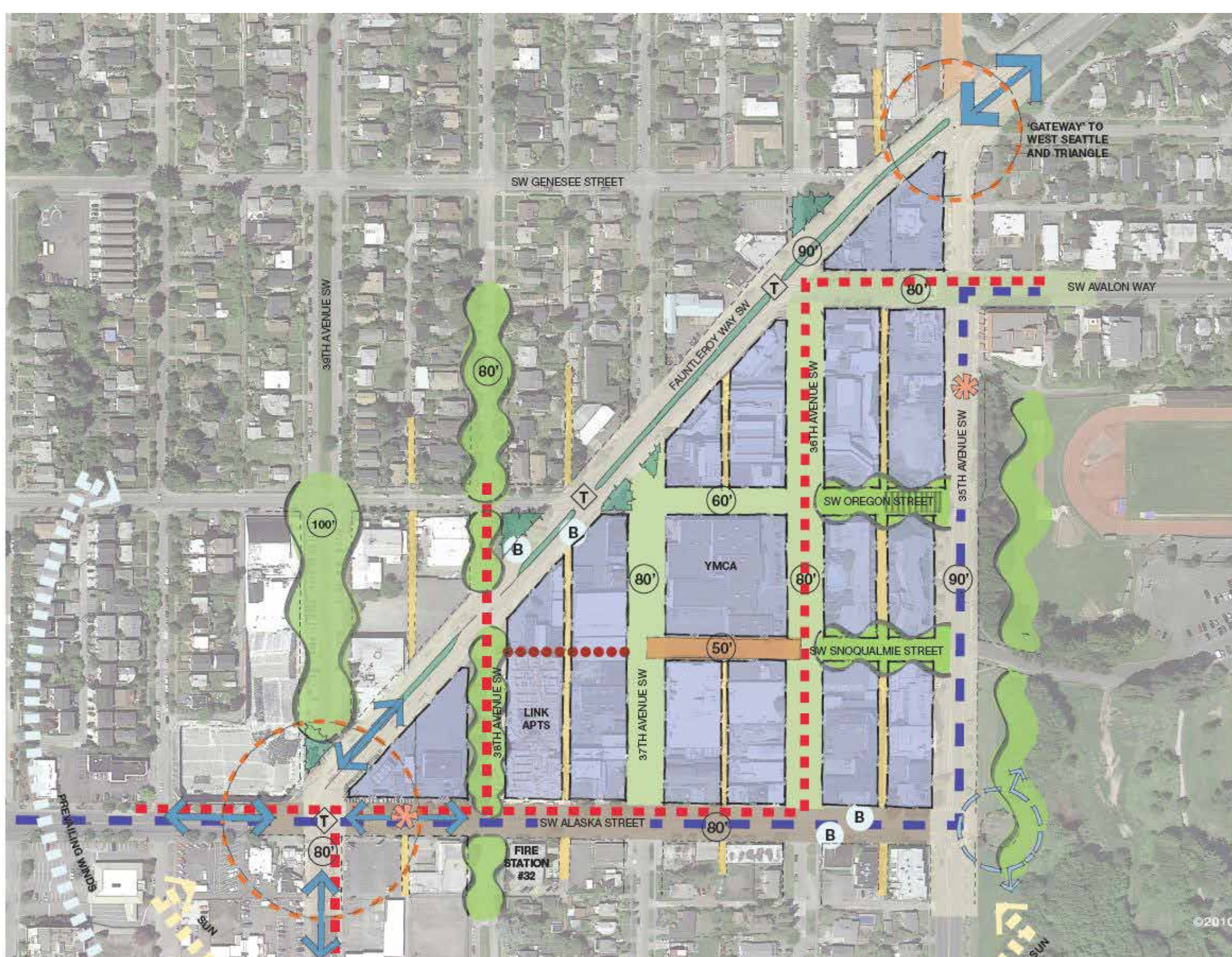
2014: Seattle Bike Master Plan designates Fauntleroy Way for a protected bike lane

2014-2015: Early design, including meetings with residents and businesses, and a public open house

2015: Project put on hold at 60% design pending funding

December 2016: Project re-initiation with funding from Move Seattle levy

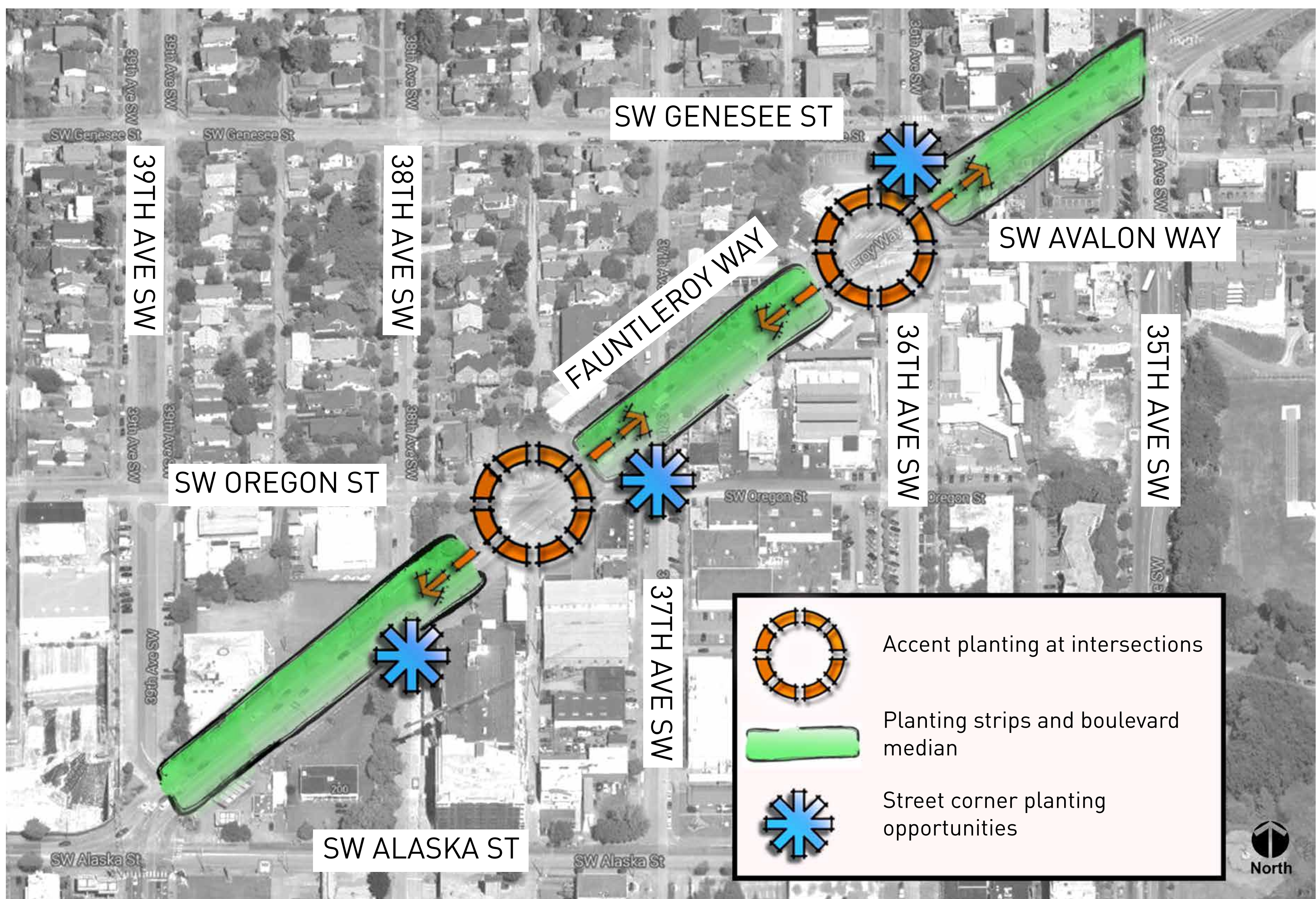
Images from project open houses in 2010 and 2014



- | | |
|-------------------------------------|--|
| BOULEVARD / REGIONAL CONNECTOR | NEIGHBORHOOD GREEN STREET |
| LOCAL CONNECTOR: COLLECTOR ARTERIAL | BOULEVARD (PROPOSED) |
| MIXED-USE STREET | PEDESTRIAN PRIORITY STREET/ FESTIVAL STREET (PROPOSED) |
| NEIGHBORHOOD STREET | HILL CLIMB (PROPOSED AT SW OREGON) |
| EXISTING PARCELS WITHIN PHASE I | RAPID RIDE ROUTE (PROPOSED) |
| EXISTING/POTENTIAL OPEN SPACE | BUS STOP (EXISTING) |
| TRUCK ROUTE | BIKE ROUTE |
| RAPID RIDE STOP (PROPOSED) | PEDESTRIAN CONNECTION |
| | EXISTING ALLEY |
| | PRIMARY CONNECTION |

Proposed recommendations from the West Seattle Triangle Plan (adopted in 2012 as a director's rule by the Seattle Department of Transportation and the Department of Planning and Development)

LANDSCAPING CONCEPT



New landscaping will provide a gateway entrance to West Seattle as well as help separate people walking and biking from the street

Landscaping maintenance

SDOT will provide primary maintenance for the new landscaping along Fauntleroy Way. We're also exploring community stewardship opportunities.

Are you or your community group interested in discussing community landscaping? **Share your contact information on a comment card.**

LANDSCAPING EXAMPLES

Planting strip and boulevard median



Selected plants



Mt Vernon Laurel



Georgia Blue Speedwell

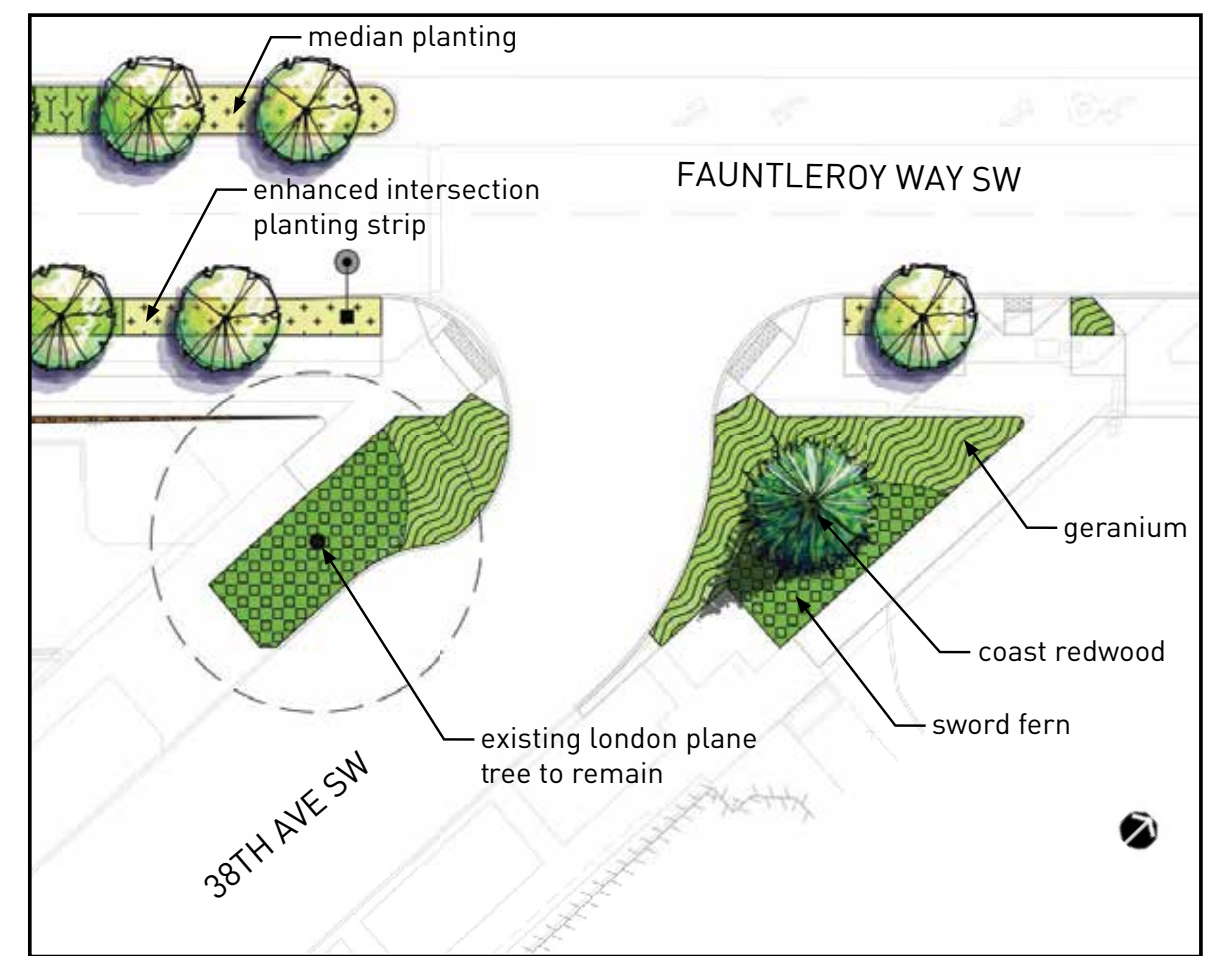
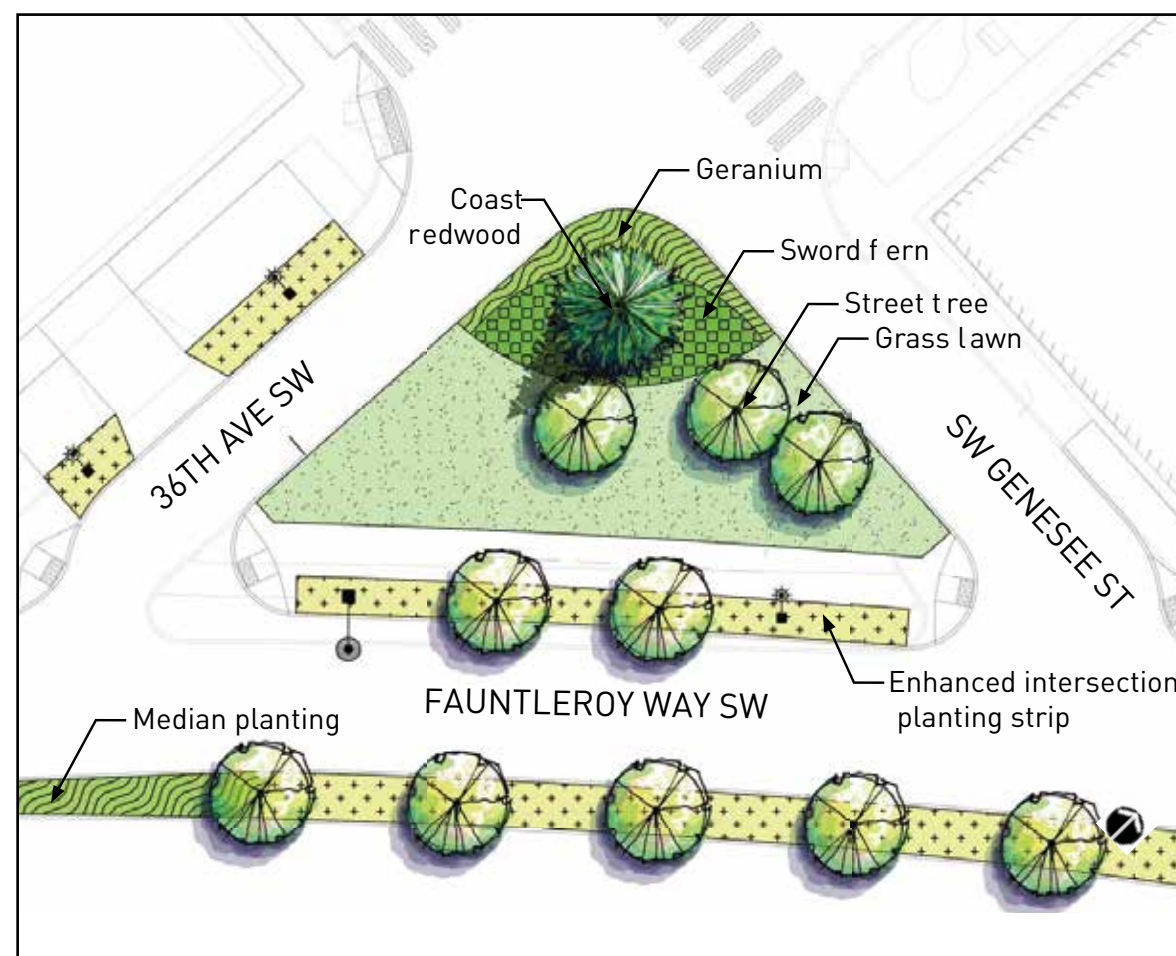


Musashino Japanese Zelkova

Landscaping for the boulevard median and planting strip is designed to provide visibility and be low maintenance



Street corner planting



Additional landscaping at select street corners is designed to be adaptable to the urban streetscape and provide green stormwater infrastructure



Enhanced intersections



Selected plants



Japanese Blood Grass



Geranium



Angelina Sedum



Sour Gum

Accent plantings at intersections will provide year-round seasonal color and texture while still providing visibility and being low maintenance

DESIGN FEATURES

Lighting and utilities



Pedestrian lighting



Current conditions



Rendering of signal mast arm

Reduced overhead wires by adding signal mast arms and consolidating utility wires

Pedestrian features



Curb bulbs



New signaled crosswalk at 38th Ave SW

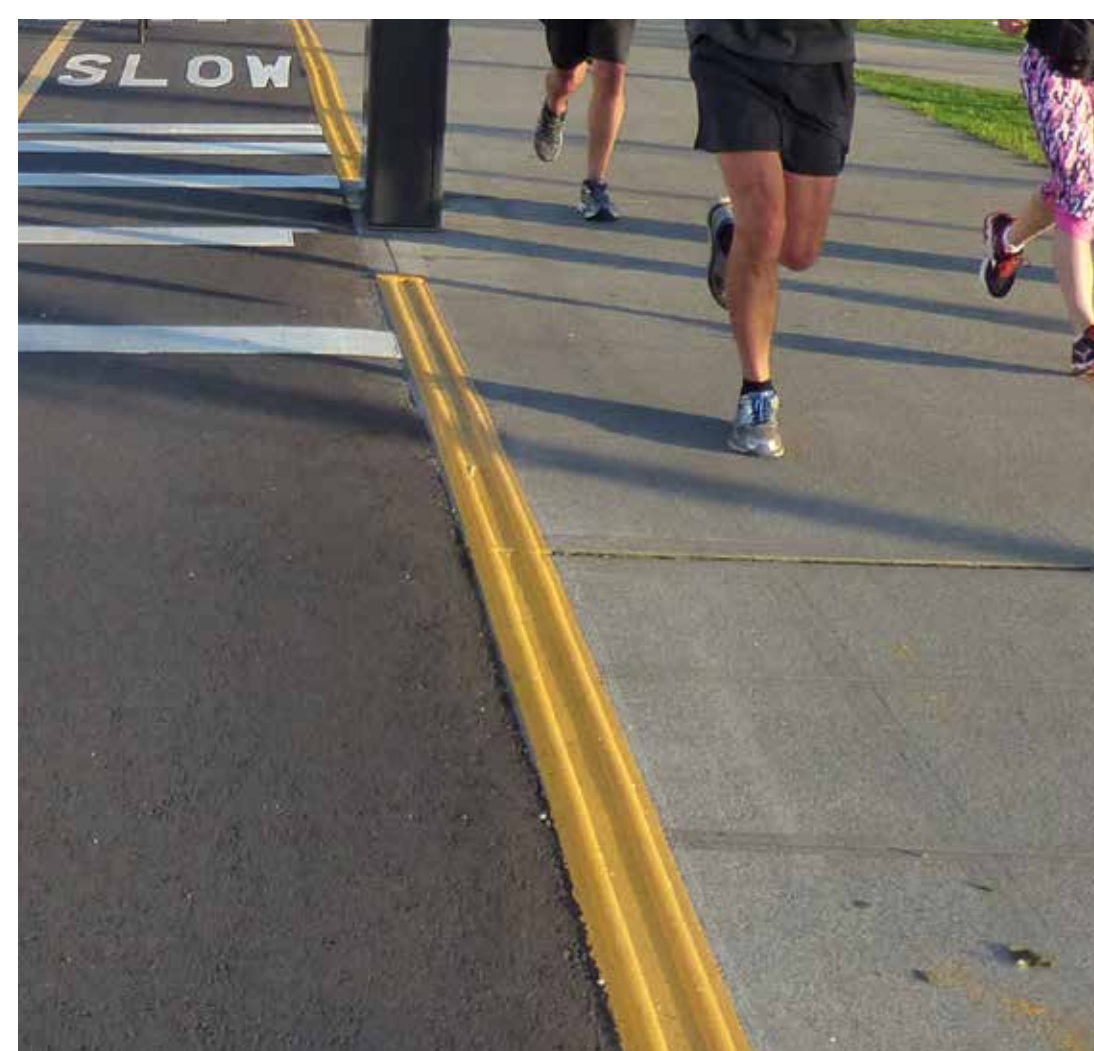


Shorter crossings (created by re-aligning side streets)

Protected bike lane (PBL) elements



1-way PBL on either side of street



Raised yellow strip to separate sidewalk from PBL



Green paint where PBL crosses driveways

CONSTRUCTION PLANNING

Tell us what you think!

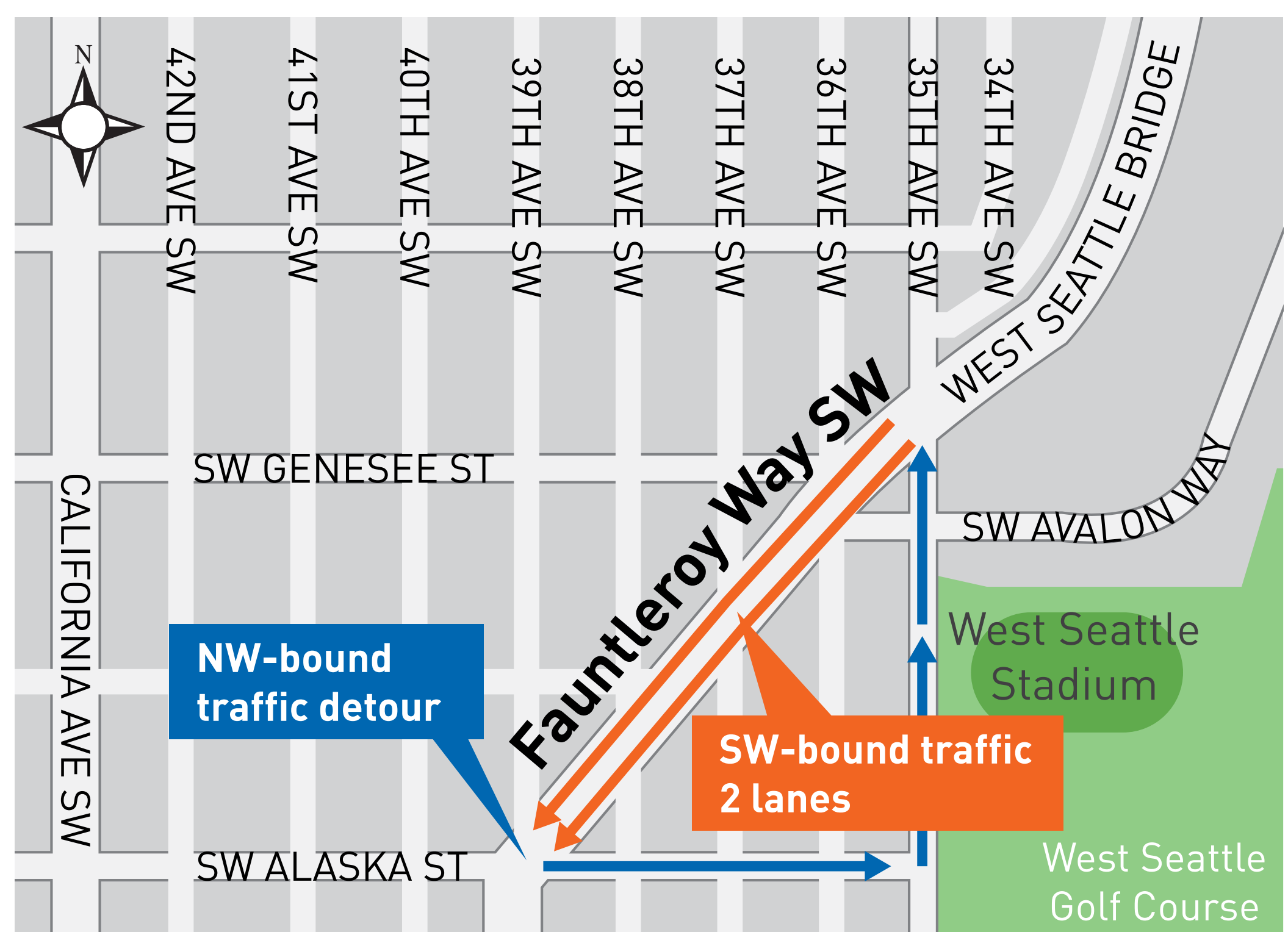
We're considering 2 options for routing traffic during construction.

Share your thoughts about routing during construction on a comment card.

We will maintain access to shops and businesses at all times. Please continue to do business on Fauntleroy Way throughout construction to support these locally owned businesses!

1-way routing

- Construction duration ~12-15 months
- Fauntleroy Way maintains 2 travel lanes, but open only to SW-bound traffic
- NW-bound traffic detoured on 35th Ave SW and SW Alaska St
- Signal timing adjustments to accommodate temporary construction traffic pattern



Proposed traffic directions. Tell us what you think!


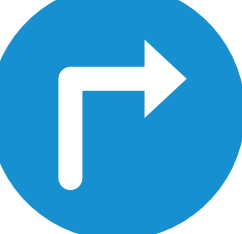



2-way routing

- Construction duration ~15-18 months
- No traffic detours
- Maintains business exposure to 2-way traffic
- Greater congestion on Fauntleroy Way
- Signal timing adjustments to accommodate reduced travel lanes on Fauntleroy Way



WORKING WITH YOU DURING CONSTRUCTION

Here's how we'll work with the community during construction:

-  A single point of contact to provide advance notice and regular updates – email, phone, and door-to-door
-  Business and directional signs and maps
-  Encourage construction crews to park in a designated lot
-  Adjust construction schedule around key community events
-  Coordinate with private development

**What else would you find helpful during construction?
Share your thoughts on a comment card.**

We've partnered with the Office of Economic Development to assist Fauntleroy businesses as they prepare for construction and beyond.

Resources include:

- Free business consulting
- Restaurant assistance
- Advocacy during City permitting and utility processes
- Financial consulting

TIMELINE

