

Melrose Promenade

Pike/Pine Businesses Construction Meeting

Agenda

- Welcome and introductions
- Project overview and construction updates
- How we'll keep you informed
- Contacts and resources
- Questions



Our Vision, Mission, and Core Values

Seattle is a thriving equitable community powered by dependable transportation. We're on a mission to deliver a transportation system that provides safe and affordable access to places and opportunities.

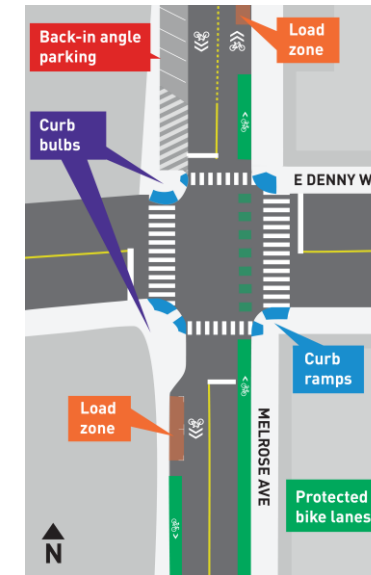
We value equity, safety, mobility, sustainability, livability, and excellence.

Project Overview

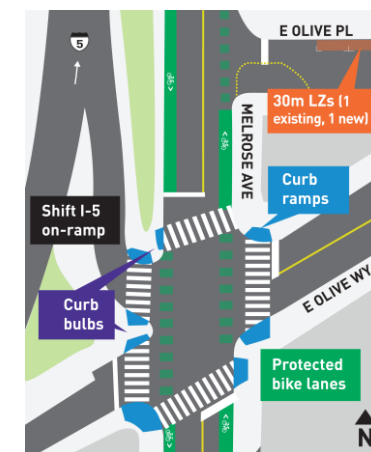
- Project improves conditions and safety for people walking and biking
- Project extends from University St to E Roy St
- Protected bike lanes between E Pine St and E Denny Way
- Intersection improvements at E Pike St, E Pine St, E Denny Way, and E Olive Way
 - Raised intersection and community crosswalks between Pike and Pine
 - New curb bulbs and crosswalks at E Olive Way and Melrose Ave at I-5 on-ramp entrance
- Traffic calming including speed humps and pavement markings
- Pavement and sidewalk repairs and improvements
- New curb ramps and relocated load zones
- Changes to on-street parking



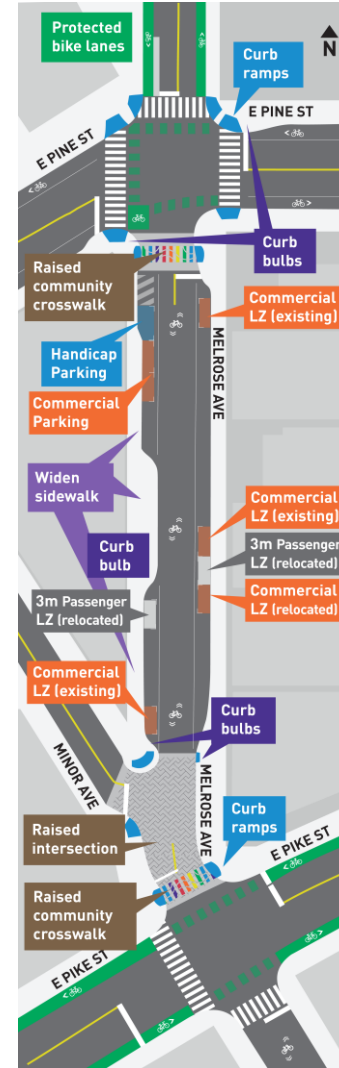
1 Melrose Ave/E Denny Way



2 Melrose Ave/E Olive Way



3 Melrose Ave/ E Pine St to E Pike St



[See project poster on our webpage](#)

Project Updates

- Hired construction contractor - CA Carey
- Construction expected to begin late January/early February and continue into fall*
- Major construction at the Pike/Pine block anticipated to start in April or May*
- Willing to work with businesses on temporary streateries

**Construction schedules may change; concrete work is weather dependent*



What to Expect During Construction

- Typical weekday work hours 7 AM – 5 PM, with occasional nighttime and weekend work
- No planned closures on Pike/Pine block during weekends and summer festivals
- Pedestrian access to residences and businesses maintained at all times
- Temporary street and sidewalk closures and detours
- Disruptions to on-street parking
- Noise, dust, and vibrations
- Construction equipment staged in the work area



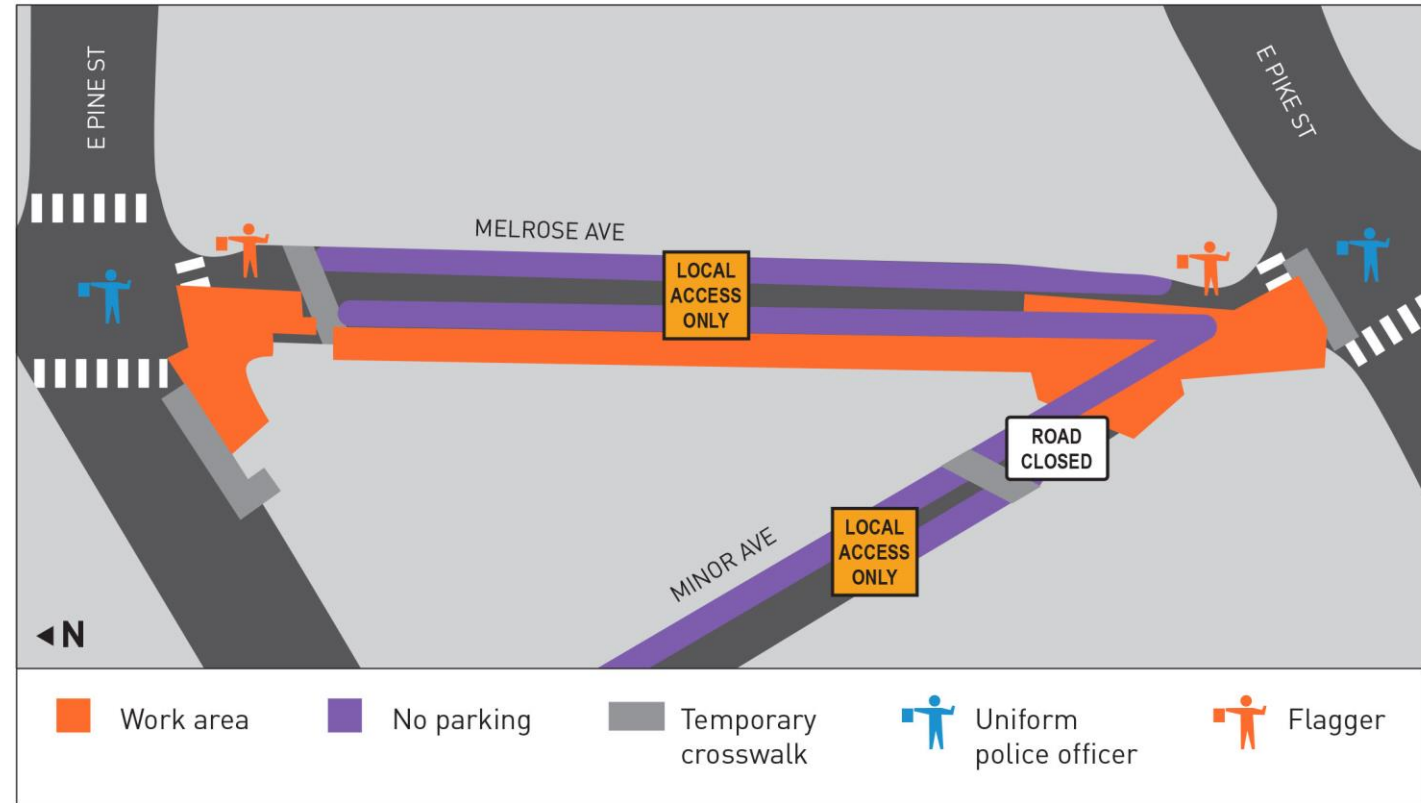
Construction on the Pike/Pine Block

- Shorter, more intensive construction schedule
- No anticipated weekend or holiday closures
- Close coordination with businesses on access to loading areas for deliveries and trash pick-up
- Maintaining access to Melrose Ave, with some restrictions
- "Businesses are Open" signs
- No anticipated utility shut-offs



Construction on West Side of Melrose Ave Between Pike and Pine

- Local access only on Melrose Ave and Minor Ave, with parking restrictions
- Minor Ave closed near intersection with Melrose Ave
 - No through traffic on Minor Ave
- UPOs and flaggers on site to help with deliveries, local access, and pedestrian access

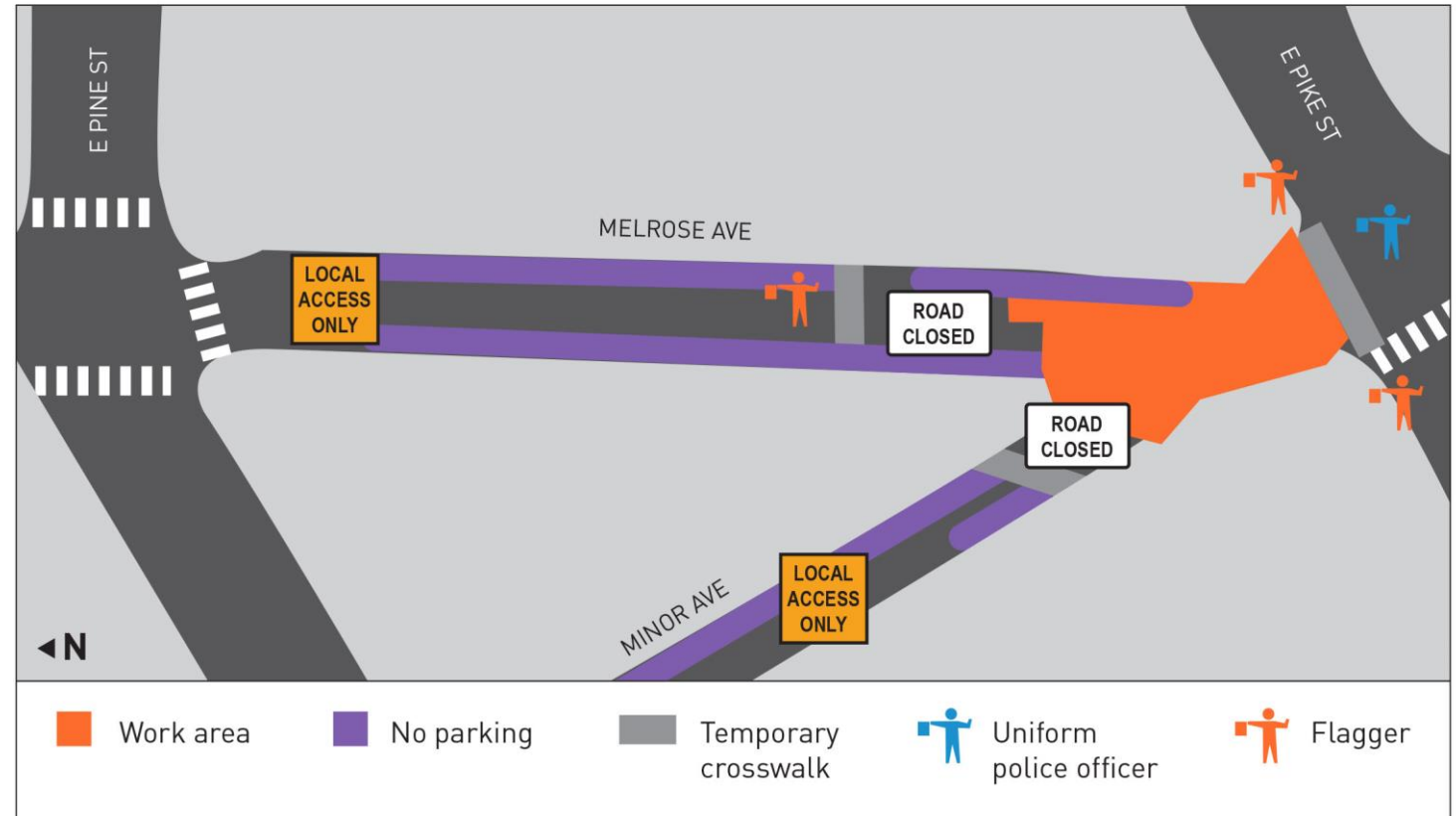


Preliminary construction plans – subject to change

Construction of Raised Intersection

Pike/Melrose/Minor

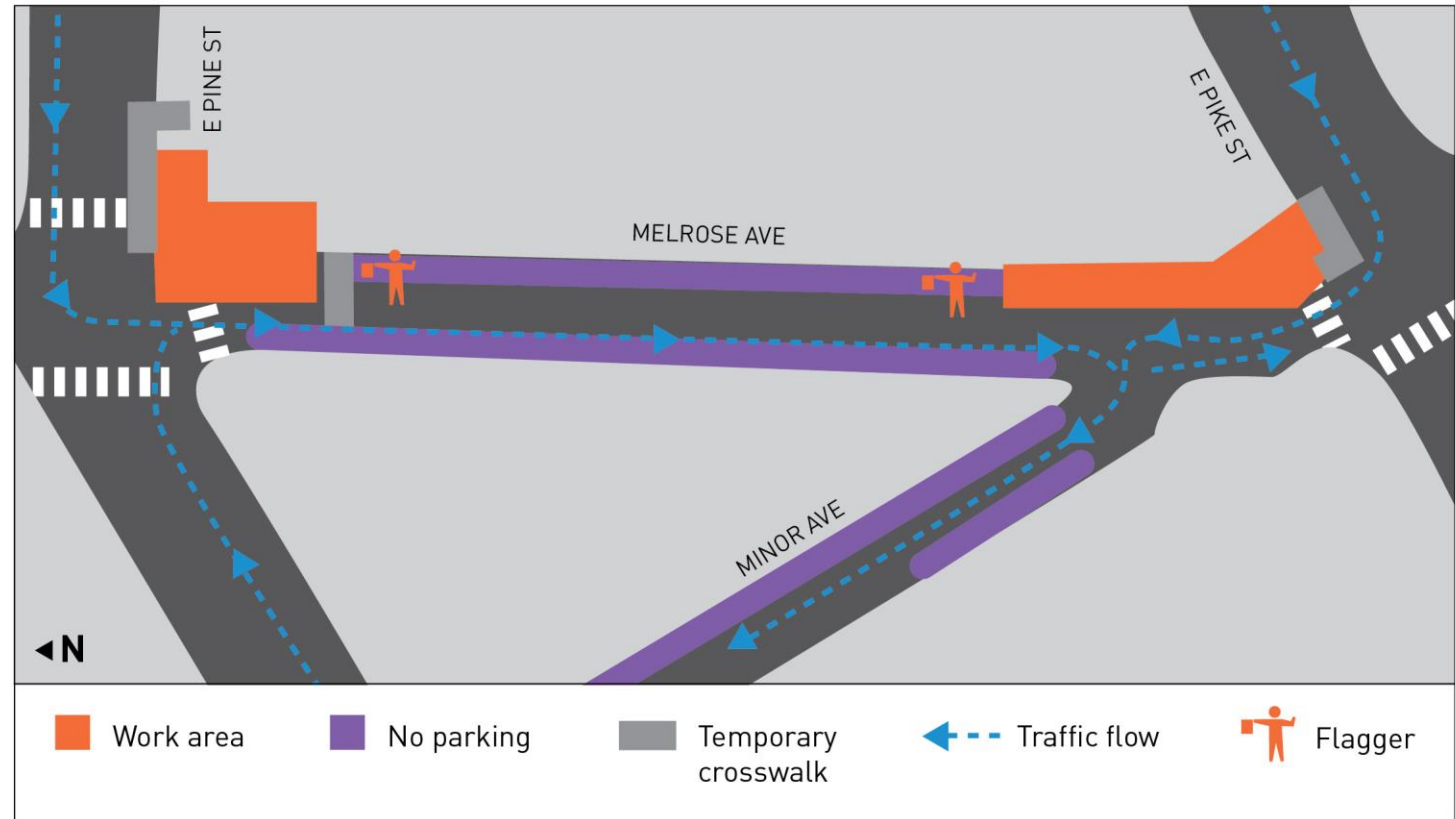
- 2 short term full closures of the intersection for pavement and concrete work
 - Closed Monday 7 AM - Thursday 7 AM
 - Includes nighttime work
- No through traffic on Melrose Ave or Minor Ave with parking restrictions
- Identifying an area on Pike or Pine for deliveries
- During non-full closures, at least one travel lane will be open
- Flaggers will be on-site to help with local access, deliveries, and pedestrian access



Preliminary construction plans – subject to change

Construction on the East Side of Melrose Ave Near Pike and Pine Streets

- Melrose Ave converted to one-way southbound
- Minor Ave converted to one-way northbound
- Parking restrictions on Melrose and Minor
- Flaggers will be on-site to help with local access, deliveries, and pedestrian access



Preliminary construction plans – subject to change

How We'll Keep You Informed

- Regular project email updates
- Construction coordination meetings with businesses
- Contact us:
 - Email: MelrosePromenade@seattle.gov
 - Phone: 206-529-4295
- Parking enforcement updates



Contacts and Resources

Project Team

Email | MelrosePromenade@seattle.gov

Call | 206.529.4295

Visit | www.seattle.gov/transportation/melrose

Office of Economic Development

Provides connections to a wide range of small business resources and a network of small business support organizations and lenders

- **Email** | OED@seattle.gov
- **Phone** | 206-684-8090
- **Web** | www.seattle.gov/office-of-economic-development

BACK POCKET SLIDES

Dogwood Cornus (Eddie's White Wonder)

