

# Seattle Transportation Levy Oversight Committee

July 2025



## Purpose of Today's Work:

- ✓ Hear lessons learned from past LOC members
- ✓ Learn more about what SDOT does, and how the Levy fits in
- ✓ Begin to learn about how a project comes to life

## Agenda

**5-5:20pm:** Welcome; Public Comment; Review of Last Meeting

**5:20-5:30pm:** New Member Introductions

**5:30-6:00pm:** Panel Discussion with Returning LOC Members

**6:00-6:15pm:** How SDOT is Organized & What We Do

**6:15-6:45pm:** Planning and Delivering Projects

**6:45pm-7:00pm:** Questions, Wrap Up and Look-Ahead to Next Meetings

# **Review of highlights from levy to-date, from last meeting**





# Administering the Transportation Levy



Views from our first neighborhood new sidewalks walk in Pinehurst on Jan. 25.

Hitting the ground running on January 1 with crew-delivered levy projects, new sidewalk walks, etc.\*

Recruiting for and establishing new **Levy Oversight Committee**

Developing plan for **Transportation Funding Task Force** & interviewing consultants

Working on **confirming life-of-levy targets** for programs without defined numerical deliverables in levy legislation\*

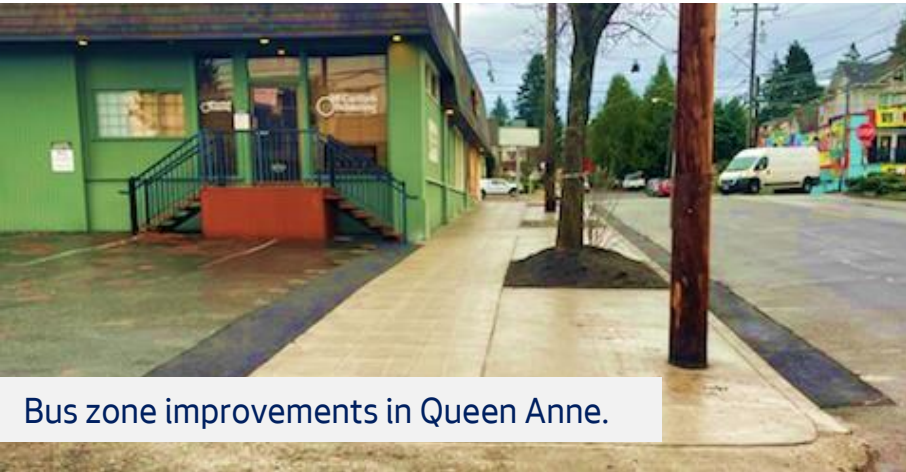
Responding to **new funding realities** & problem-solving within affected programs\*

Working with City Council to **lift proviso** on levy spending; delivered 2025 Workplan





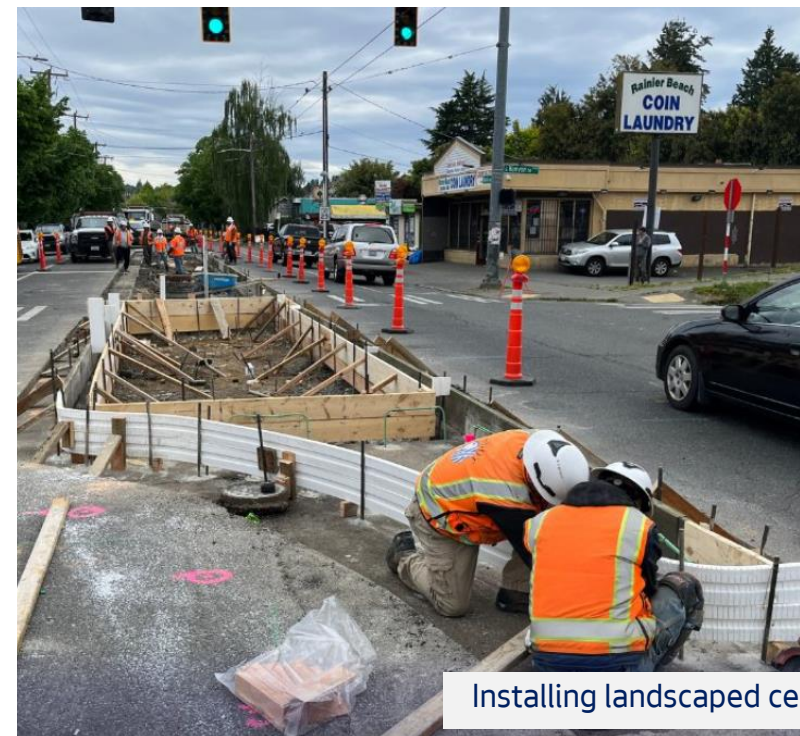
# Levy Highlights To-Date



Bus zone improvements in Queen Anne.



Bus zone improvements in Queen Anne.



Sidewalk repair on California Ave SW & SW Edmunds St

Installing landscaped center medians on Rainier Ave S.





# Questions from the last meeting?



# Reminder: Levy Oversight Committee Key Roles

*(per legislation)*

## ✓ Annually review Levy:

- Priorities
- Spending
- Financial plans

## ✓ Monitor Levy:

- Revenues
- Expenditures
- Program and project implementation

## ✓ Advise the City Council, the Mayor and SDOT on:

- Spending of Levy proceeds
- Performance of Levy programs

## ✓ May also:

- Audit Levy-funded programs
- Make recommendation to the Mayor and City Council regarding the advisability of proposing to Seattle voters a replacement levy after this one expires

# New Member Introductions

- Lucy Sloman, District 4 representative
- Wes Mills, Seattle Pedestrian Advisory Board representative

*Please share:*

- *Your name*
- *What motivates you to serve on the LOC*
- *Your favorite neighborhood in Seattle and why.*





# Hearing From Past LOC Members

*Thank you, Lisa and Geri!*

- Geri Poor, Freight Advisory Board Representative
- Lisa Bogardus, District 6 Representative
- What were some of the challenges and successes that you experienced in your time on the past LOC?
- What do you wish someone had told you when you started?
- Open floor for questions from LOC

# How SDOT is Organized & What We Do

# VISION

*Seattle is an equitable, vibrant, and diverse city where moving around is safe, fair, and sustainable. All people and businesses can access their daily needs and feel connected to their community.*



## GOALS



### Safety

Prioritize safety for travelers in Seattle, with no serious injury or fatal crashes



### Sustainability

Respond to climate change through innovation and a lens of climate justice



### Livability

Reimagine city streets as inviting places to linger and play



### Equity

Co-create with community and implement restorative practices to address transportation-related inequities



### Mobility & Economic Vitality

Provide reliable and affordable travel options that help people and goods get where they need to go



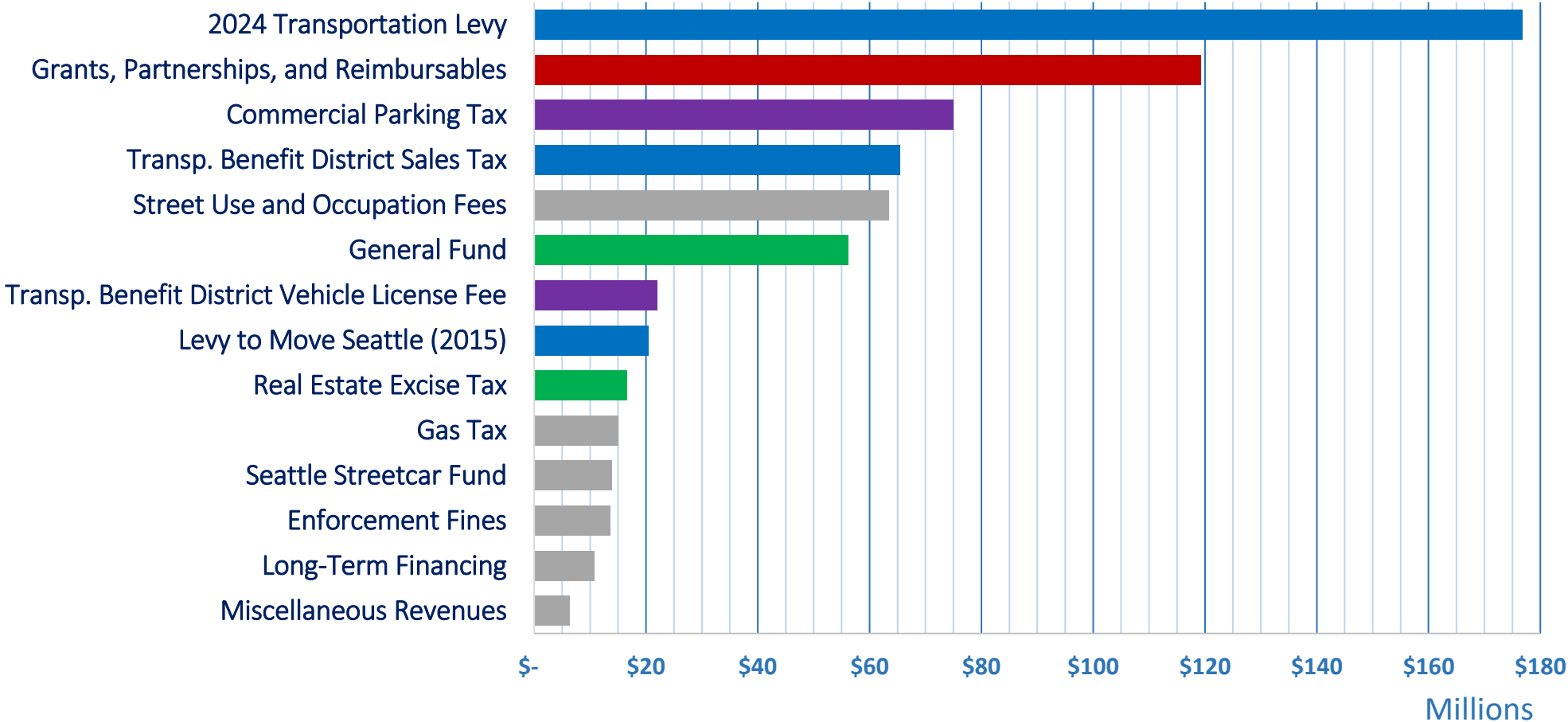
### Maintenance & Modernization

Improve city transportation infrastructure and ready it for the future



# Reminder: How SDOT is funded

## SDOT's 2025 Budget by Funding Source



**Key:**

- Voter-Passed Measures
- Council-Passed Sources
- Central City Resources
- Grants, Partnerships, and Reimbursables
- Other

The Levy is unique as a funding source due to its stability.

# More on Funding Sources

*What can they be used on?*

*How stable are they?*

Funding Source	How Restricted?	How Stable?
Transportation Levies	Strict	Stable
Grants, Loans, Partnership Funds	Strict	Variable
Transportation Benefit District - 0.15% Sales Tax	Strict	Variable
Bonds	Strict	Stable
Street Vacation	Strict	Variable
Reimbursable	Strict	Stable
Property Proceeds	Strict	Variable
Street Use & Occupation Fees	Moderate	Variable
Gas Tax	Moderate	Variable
Transportation Benefit District - VLF \$50	Moderate	Stable
REET	Moderate	Variable
School Safety Traffic & Ped Improvement	Moderate	Variable
Commercial Parking Tax	Flexible	Variable
General Fund	Flexible	Variable

**Strict:** Funding sources that either have underlying law that restricts how the money can be used or for which our reallocation is restricted in some way.

**Moderate:** Funding sources with limited ability to repurpose and have some restrictions.

**Flexible:** Funding sources with few restrictions. Spending must be reasonably justified and follow the typical limitations on using public money.

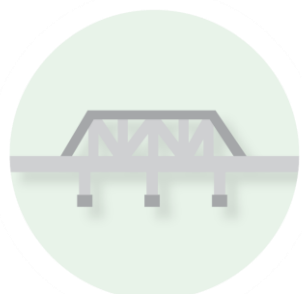
**Stable:** Funding is reliable for set time period; i.e. 8 year levy totaling \$1.55B.

**Variable:** Funding availability depends on factors beyond SDOT's control

# With this funding, SDOT builds, maintains, and operates Seattle's transportation system, which includes...



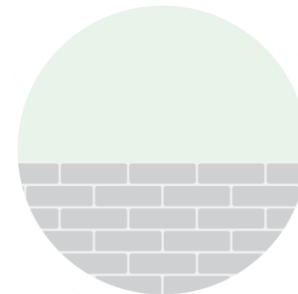
**3,900** lane miles  
of streets



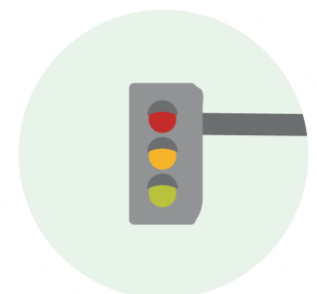
**124**  
bridges



**497**  
stairways



**600**  
retaining walls and sea walls



**1,100**  
traffic signals



**194,000+**  
signs



**2,300** miles  
of sidewalk and medians



**32,000+**  
curb ramps



**38,000**  
SDOT street trees  
(600,000 in City right-of-way)



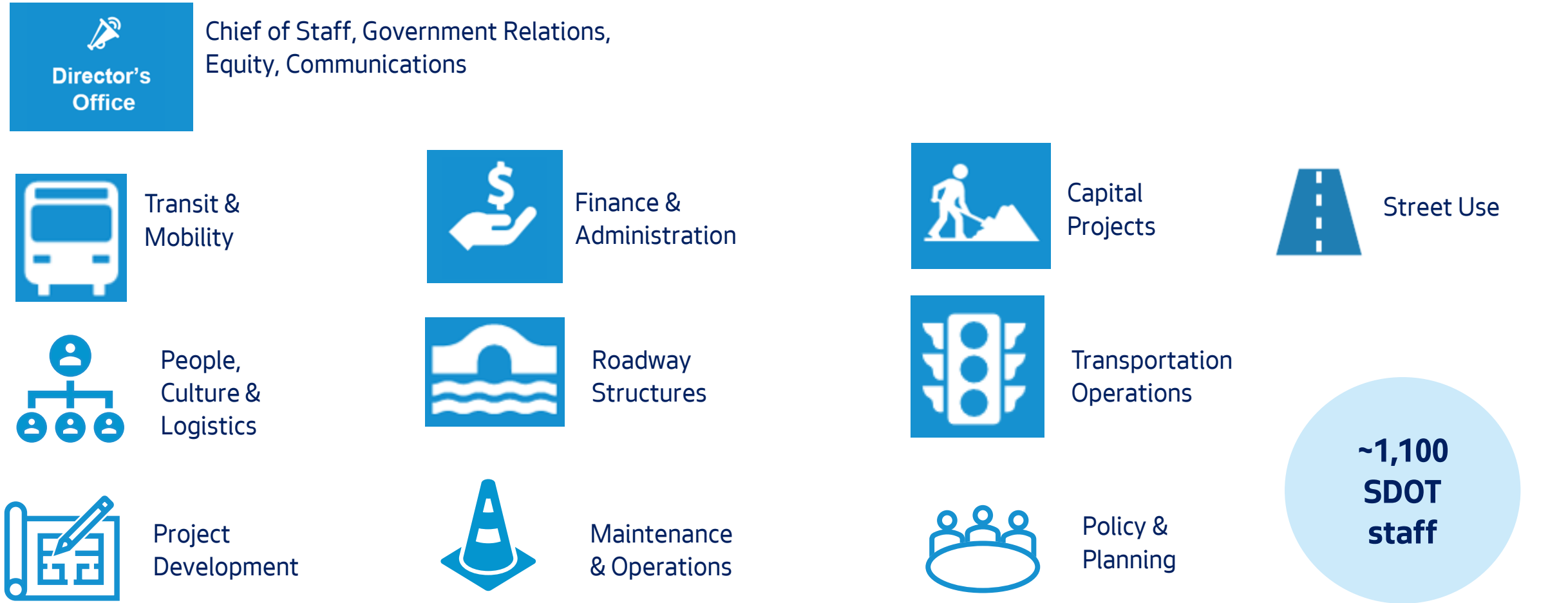
**7,000,000** square feet  
of landscaped areas



# Pause for questions



# How SDOT is Organized



# What We Do: Plan, Engage, & Coordinate

- Secure grant and partnership funding opportunities
- Provide communications and public outreach service/support across programs and projects
- Engage with other cities, Sound Transit, Metro, the Port, and WSDOT
- **Sound Transit 3:** West Seattle and Ballard Link Extensions are largest infrastructure projects in City history (\$12 billion); opportunity for transformation, and potential for impacts

## Mayor Harrell Signs Legislation to Streamline Sound Transit Permitting and Support Faster Expansion of Light Rail

by Callie Craighead on July 2, 2025





# What We Do: Maintain & Operate

- 24/7 Street Maintenance Operations
- Traffic Operations Center
- Weather response
- Pothole repair
- Sidewalk safety repair
- Trees and landscaping
- Traffic signals
- Bridges
- Areaways
- And more...





# What We Do: Mobility Solutions

- Transit service in Seattle\*
- Transit safety and access improvements\*
- Transportation access programs\*
- Responding to emerging mobility needs\*
- Bike, scooter and car share
- Emissions reduction
- Transportation electrification
- Curbspace management

**\*Funded by Voter-Approved Seattle Transit Measure**

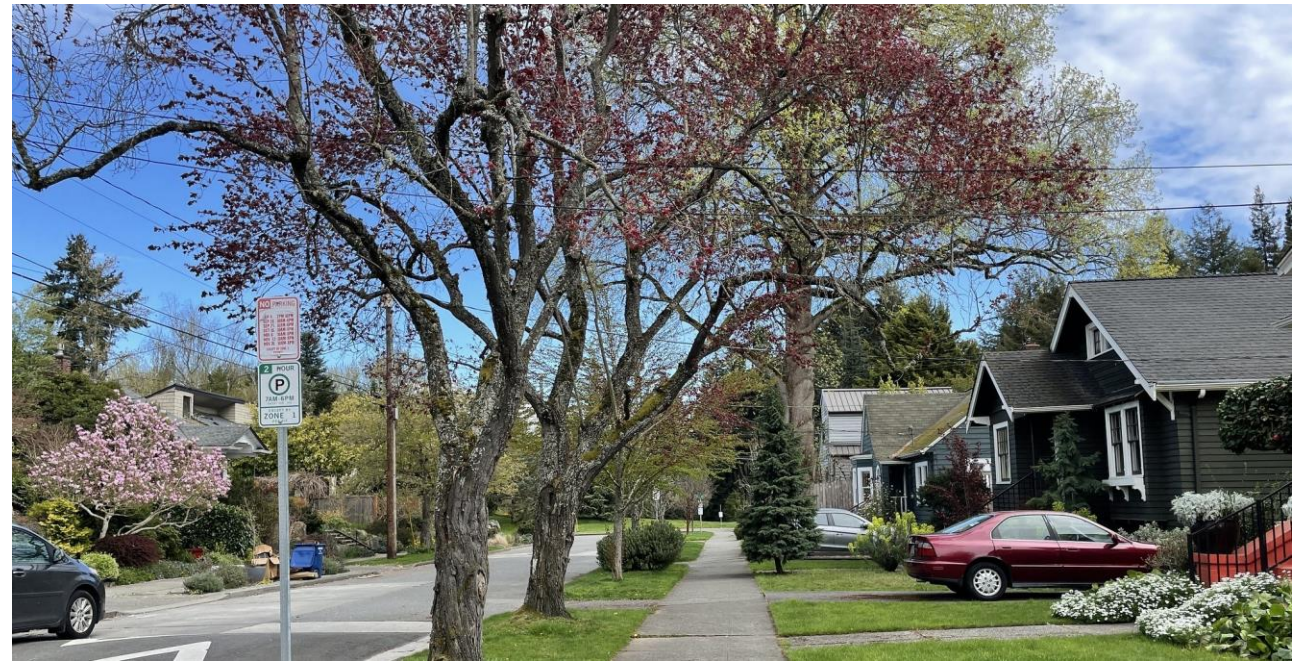
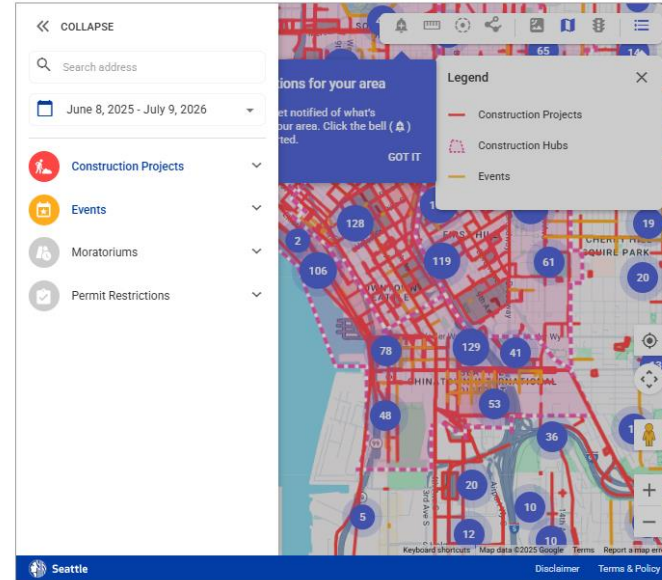




# What We Do: Steward the Right of Way

- Permitting
- Customer Service
- Construction inspections
- Public space management
- Reporting and mapping
- Construction coordination

View the SDOT Project and Construction Coordination Map





# What We Do: Build

## Capital projects (\$150,000 or more), such as:

- Building and retrofitting bridges
- Paving major streets
- Major transit and multimodal projects
- Neighborhood walking and biking projects

## Crew-built projects (under \$150,000), such as:

- Neighborhood safety work
- Walkways
- Minor repairs to streets and sidewalks
- Traffic signals



# Pause for questions



**What We Do: Build**

**How a Levy Project Comes to Life**

# How we identify projects

- Community requests
- Seattle Transportation Plan and other adopted plans
- Data showing an emerging need, such as traffic collision data
- Partner agency requests and opportunities



# Assessing if it's possible

- Funding availability and rough cost of project
- Project feasibility, including width of right of way, use of street, other utilities or conflicts
- Consideration of project standards, warrants, guidelines and best practices
  - Federally adopted Manual on Uniform Traffic Control Devices (MUTCD) warrants analysis
  - National Association of City Transportation Officials (NACTO) guidelines
  - Seattle Municipal Code
  - SDOT policies

# Prioritizing what we can do

- Use guidance informed by Seattle Transportation Plan, community input, and other factors like:
  - **Established program goals**
  - **Number of people who could benefit**
  - **Geographic distribution**
  - **Optimal investment timing**
  - **Equity**
  - **Opportunities to co-create with community**
  - **Leveraging opportunities from a grant or partner investment**
- Center Seattle's Racial and Social Equity Index and SDOT's Transportation Equity Framework
- We'll use this same guidance to continually identify additional Transportation Levy projects over the next 8 years

# Centering equity

## EQUITY



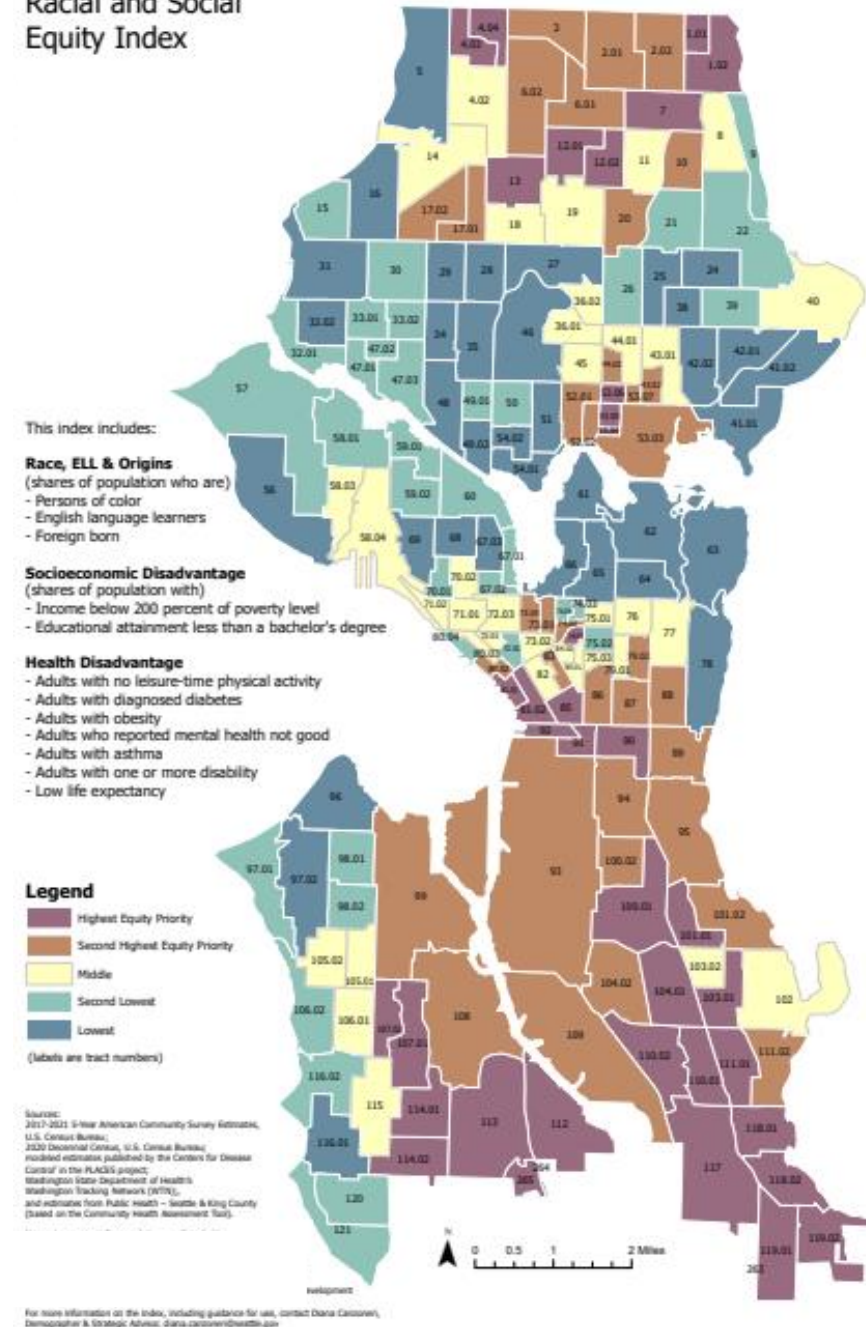
In support of Seattle Transportation Plan equity goal, the Levy aims to address *inequities in the transportation system by prioritizing investments for impacted communities.*

## The development and implementation of program work plans:

- Centers Transportation Equity Framework (TEF) Tactics
  - *You reviewed the basics of the TEF in your onboarding*
- Uses the City's Race and Social Equity (RSE) Index to assess and tailor transportation solutions that respond to specific local challenges

**You will learn more about our work to embed equity in the levy in a future meeting**

## Racial and Social Equity Index



# Pause for questions





# **What projects do we do each year?**

## ***The Annual Levy Delivery Plan***

# What is the Levy Annual Delivery Plan?



- ✓ Public document which you reviewed as part of your July onboarding
- ✓ Shows a list of work funded with Seattle Transportation Levy dollars that SDOT expects to progress in that year
- ✓ Includes the amount of funding appropriated to each program area in that year
- ✓ Informed by many factors

# Levy Delivery Plan

## Appendix A: Estimated 2025 Levy Investments

1: Vision Zero, School and Neighborhood Safety: Make targeted and community-requested improvements to streets, sidewalks, intersections, and crossings to reduce traffic collisions, severe injuries, and fatalities.		
Program	Cumulative Estimated Levy Investments	2025 Estimated Levy Investments
Vision Zero	<p><b>(1.1) Safety redesign projects</b> on up to 12 corridors on the High Injury Network</p> <p><b>(1.3) Leading pedestrian intervals</b> at 280 intersections</p> <p><b>(1.4) Traffic calming</b> on 50 corridors</p> <p>Anticipated initial Vision Zero projects on:</p> <ul style="list-style-type: none"> <li>• Aurora Ave N</li> <li>• N/NE 85th St</li> <li>• S Othello St</li> <li>• N 105th St/Holman Rd NW</li> <li>• Dexter Ave N</li> <li>• Lake City Way NE</li> <li>• 4<sup>th</sup> Ave S</li> <li>• MLK Jr Way S</li> <li>• Rainier Ave S</li> <li>• Lakeside Ave S at Lake Washington Blvd</li> <li>• N/NE 50th St</li> <li>• Other projects as identified in Vision Zero work plans</li> </ul>	<p><b>(1.1) VISION ZERO CORRIDOR PROJECTS ON HIGH INJURY NETWORKS</b></p> <p><b>Start Construction:</b></p> <ul style="list-style-type: none"> <li>• S Henderson St Safety Corridor</li> </ul> <p><b>Start Design:</b></p> <ul style="list-style-type: none"> <li>• Rainier Ave S Safety Corridor (North Segment)</li> <li>• Renton Ave S Safety Corridor</li> </ul> <p><b>Start Planning:</b></p> <ul style="list-style-type: none"> <li>• 12th Ave S Safety Corridor</li> <li>• S Jackson St Safety Corridor</li> <li>• S Othello St/S Myrtle St Safety Corridor</li> <li>• Spring St Safety Corridor</li> </ul> <p><b>(1.2) HIGH-COLLISION SAFETY PROJECTS</b></p> <p><b>Start Construction:</b></p> <ul style="list-style-type: none"> <li>• 1st Ave S and S Spokane St</li> <li>• 5th Ave and Marion St</li> <li>• 5th Ave and Pike St</li> <li>• E Marginal Way S and S Dawson St (Phase 1)</li> <li>• NE Northgate Way and 1st Ave NE</li> <li>• Broadway and E Pike St</li> <li>• Broadway and E Union St</li> <li>• Burke-Gilman Trail and 30th Ave NE</li> <li>• Eastlake Ave E and Fuhrman Ave E</li> <li>• Harvard Ave and E Pike St</li> </ul>

Program

Projects

# Reminder: Levy Programs vs. Projects - Examples



**Program:** Sidewalk Safety Repair

**Project example from past levy:**

A single repair to a sidewalk (E Thomas St)



**Program:** Safe Routes to School

**Project example from past levy:**

A new crosswalk near a school (Ballard)



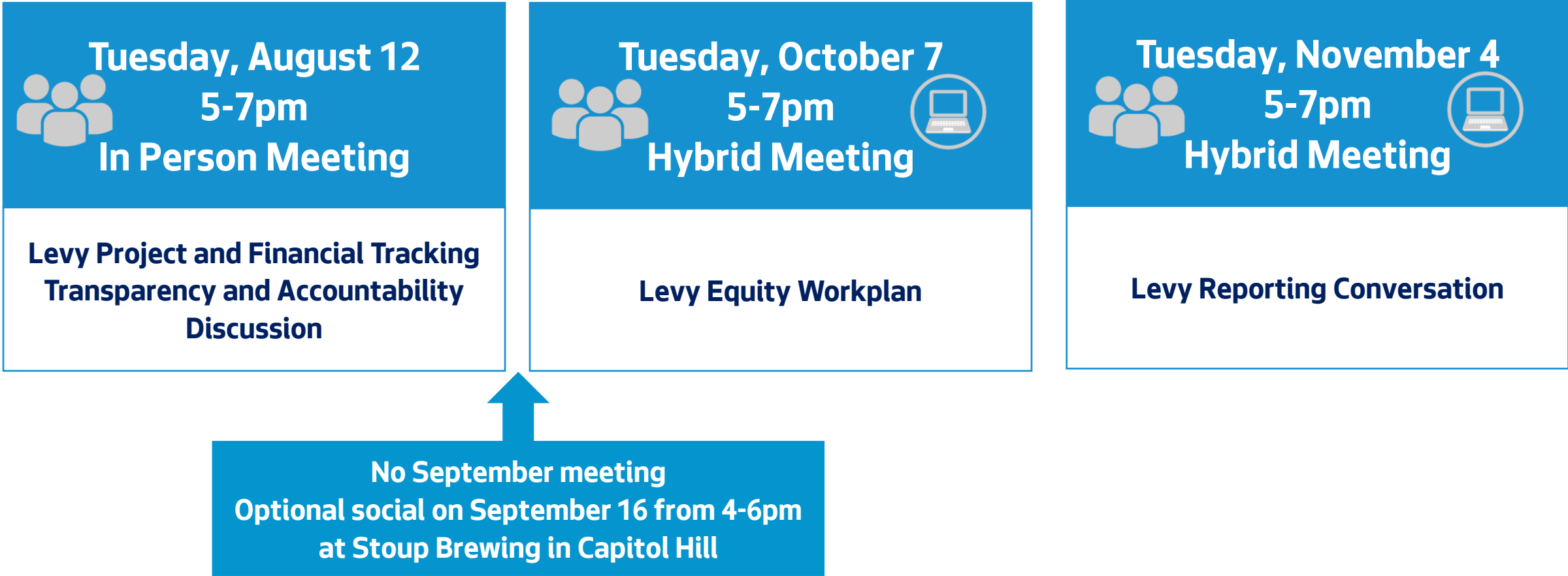
# Pause for questions



# Wrap Up and Next Steps

# What you can expect over the next few months

*(Individual meeting topics may change as needed)*



Weekly Onboarding Tasks & Reflections for 1 hour per week through August

**Thank you!**