

# 2024 Seattle Transportation Levy



City of Seattle

August 2024

If approved by Seattle voters, the 2024 Seattle Transportation Levy will generate \$1.55 billion over 8 years to fund transportation improvements in Seattle. This fact sheet describes areas of investment by program and highlights examples of what the Transportation Levy will fund.

- ✓ For the last 18 years, Seattle voters have supported transportation levies that help to fund the maintenance and improvement of our streets, sidewalks, bridges, and traffic signals.
- ✓ The current levy expires at the end of 2024 and provides about 30% of the Seattle Department of Transportation's (SDOT) budget for core services and new projects.
- ✓ The Transportation Levy would fund improvements like paving roads, repairing bridges, planting trees, building sidewalks and crosswalks, making connections to light rail stations and transit, and creating more walking, rolling, and biking routes to places where people live, work, and play.
- ✓ A Levy Oversight Committee of community members will oversee spending of Transportation Levy dollars to ensure accountability and transparency. SDOT will also publish annual workplans and progress reports to show the public how Transportation Levy dollars are spent.

## WHAT THE TRANSPORTATION LEVY WOULD COST

Levies are paid for by Seattle property owners. Under the expiring transportation levy, the owner of a median tax-assessed value home pays about \$23 per month. The estimated costs for the 2024 Transportation Levy are:



per month  
for a  
**\$1,000,000**  
home



per month  
for an  
**\$804,000**  
median-value  
home



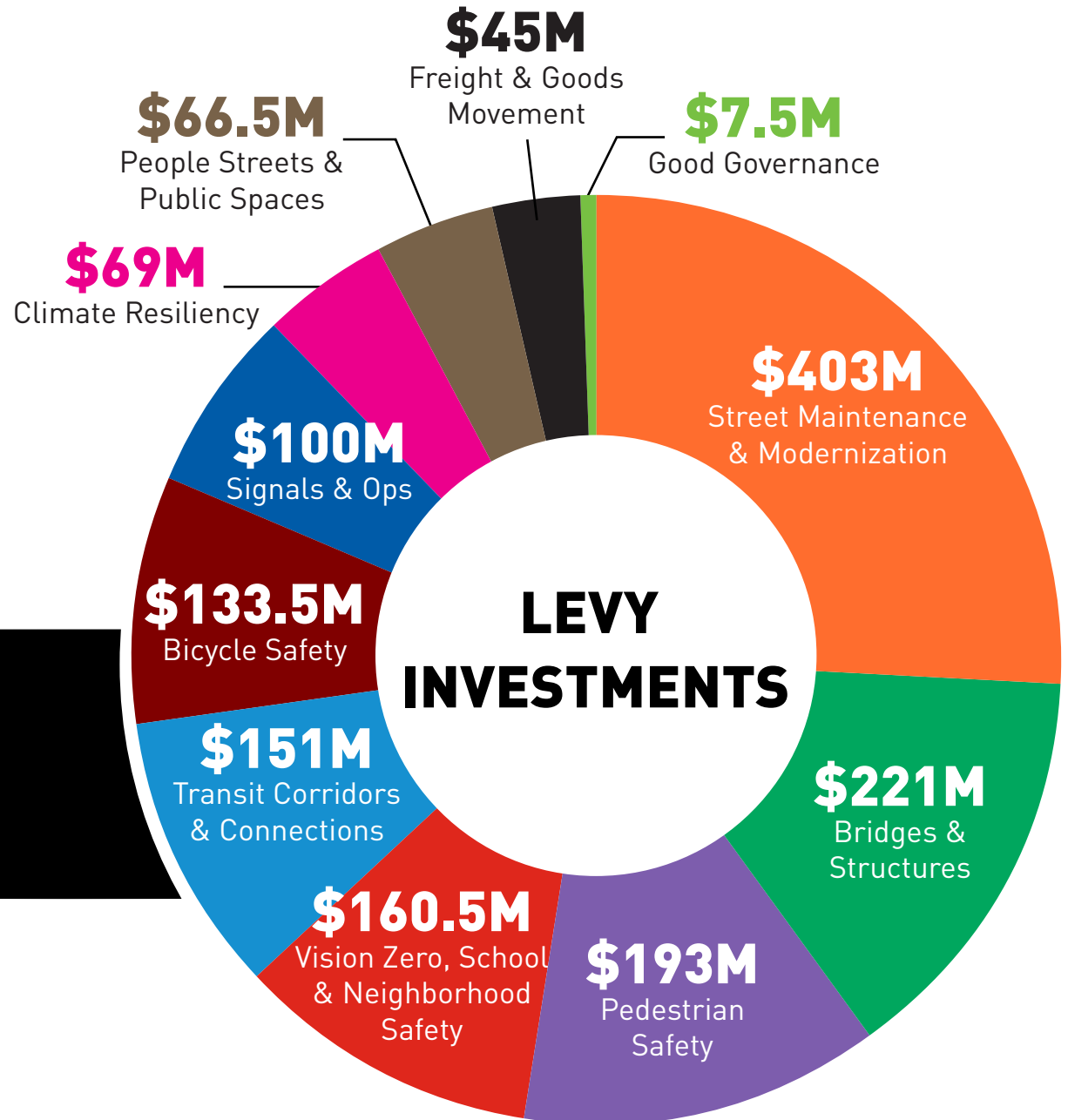
per month  
for a  
**\$500,000**  
home

# Plan for Transportation Levy Spending

The Transportation Levy is organized into 11 program areas, and each will deliver projects. Some of these projects have been determined already, and many will be identified in the future.

To select projects to be funded by the Transportation Levy, SDOT uses a variety of factors, including established City policies. SDOT aims to distribute levy investments equitably, informed by Seattle's Racial and Social Equity Index and Transportation Equity Framework.

**\$1.55 billion**  
over 8 years



# Transportation Levy Programs

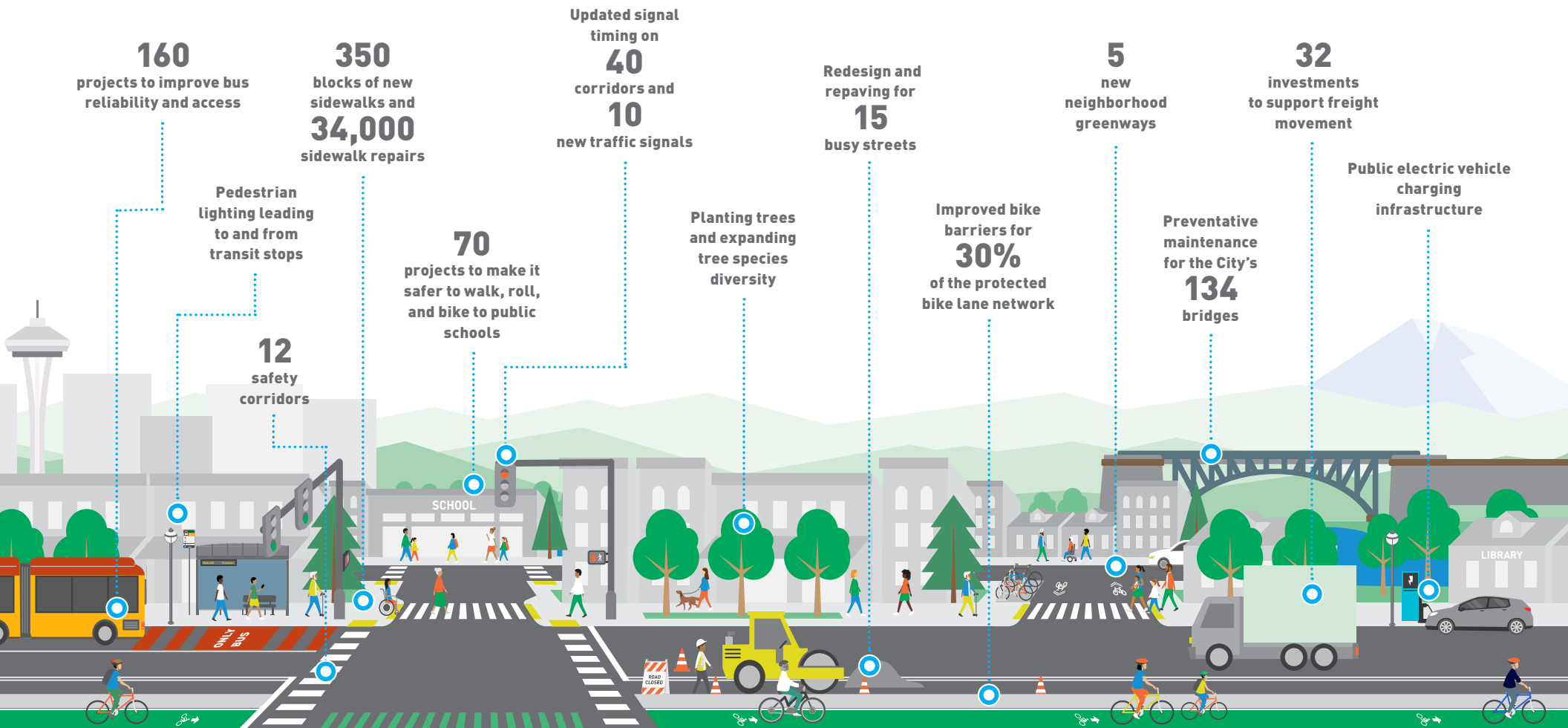
---

The Transportation Levy's 11 program areas include specific investments, as well as the flexibility to address future needs. SDOT will seek leveraging opportunities to maximize the projects that can be built as part of the Transportation Levy.

-  **Vision Zero, School & Neighborhood Safety (\$160.5M):** Make targeted and community-requested improvements to streets, sidewalks, intersections, and crossings to reduce traffic collisions, severe injuries, and fatalities.
-  **Street Maintenance & Modernization (\$403M):** Repave arterial streets that carry the most buses, trucks, and cars, and improve infrastructure for people walking, rolling, biking, and taking transit.
-  **Bridges & Structures (\$221M):** Keep bridges and structures in reliable working condition and prepare for future bridge projects.
-  **Transit Corridors & Connections (\$151M):** Connect people safely to transit hubs, including Link light rail stations and bus stops, and reduce delays on bus routes.
-  **Pedestrian Safety (\$193M):** Build and repair sidewalks, crossings, and curb ramps so people walking and rolling can safely get to where they need to go.
-  **Signals & Operations (\$100M):** Install, maintain, and upgrade existing traffic signals for safe, reliable movement; improve pedestrian and bike accessibility signals; and support traffic operations during large events, incidents, and for trips in and out of the port.
-  **Bicycle Safety (\$133.5M):** Expand Seattle's protected bike lane network; connect schools to bike lanes, paths, and neighborhood greenways; and maintain and upgrade existing bike lanes.
-  **People Streets & Public Spaces (\$66.5M):** Activate public spaces and improve lighting in partnership with business districts and community organizations so people can enjoy unique and vibrant neighborhoods and business districts.
-  **Climate & Resiliency (\$69M):** Address climate change directly, reducing air pollution and making sustainable transportation options more available.
-  **Freight & Goods Movement (\$45M):** Make freight improvements to support trucks delivering goods and providing services.
-  **Good Governance & Equitable Implementation Initiative (\$7.5M):** Maintain accountability and transparency for Seattle taxpayers and the public.

# Transportation Levy Project Examples

The Transportation Levy includes specific projects, both large and small, that SDOT will deliver across the city, as well as expanded funding for maintenance work. If approved by voters, here are some of the investments the Transportation Levy would fund.



To see a comprehensive list of planned projects and programs, view the Transportation Levy summary at the website below.

[www.seattle.gov/transportation/levy](http://www.seattle.gov/transportation/levy) • [MoveSeattle@seattle.gov](mailto:MoveSeattle@seattle.gov) • (206) 319-5893